

# SCIENCE

VOL. LXV JANUARY 14, 1927 No. 1672

## CONTENTS

<i>The American Association for the Advancement of Science:</i>	
<i>Diverse Doctrines of Evolution, their Relation to the Practice of Science and of Life:</i> PROFESSOR H. S. JENNINGS .....	19
<i>The Nation and Science:</i> THE HONORABLE HERBERT HOOVER .....	26
<i>Arnold Edward Ortmann:</i> DR. W. J. HOLLAND .....	29
<i>Scientific Events:</i>	
<i>The Pan-Pacific Science Congress; Program of the American Engineering Council; The American Museum of Natural History; Anti-evolution Legislation and the American Association of University Professors; Dinner in Honor of Sir J. J. Thomson</i> .....	30
<i>Scientific Notes and News</i> .....	32
<i>University and Educational Notes</i> .....	34
<i>Discussion:</i>	
<i>Early Days of Anti-vivisection:</i> DR. W. W. KEEN.	
<i>Helium in Deep Diving:</i> DR. ELIHU THOMSON.	
<i>About the Accusation of Plagiarism of the Late Director of the Pulkovo Observatory, Otto Struve:</i> A. A. IVANOFF. <i>The Dissolution of Insulin into Two New Active Substances:</i> DR. CASIMIR FUNK .....	35
<i>Quotations:</i>	
<i>"Narcosan" and Drug Addiction</i> .....	40
<i>Scientific Books:</i>	
<i>Freundlich on Colloid and Capillary Chemistry:</i> PROFESSOR HARRY N. HOLMES. <i>Zane Grey on Deep Sea Fishing in New Zealand:</i> DR. DAVID STARR JORDAN .....	40
<i>Scientific Apparatus and Laboratory Methods:</i>	
<i>"A F S," a New Resin of High Refractive Index for mounting Microscopic Objects:</i> G. DALLAS HANNA. <i>The Culture Medium for Drosophila:</i> TAKU KOMAI .....	41
<i>Special Articles:</i>	
<i>On the Origin of Sun-spot Vortices:</i> PROFESSOR FERNANDO SANFORD. <i>Bacterial Filters and Filterable Viruses:</i> DR. S. P. KRAMER .....	43
<i>Science News</i> .....	x

SCIENCE: A Weekly Journal devoted to the Advancement of Science, edited by J. McKeen Cattell and published every Friday by

THE SCIENCE PRESS

Lancaster, Pa. Garrison, N. Y.  
New York City: Grand Central Terminal.

Annual Subscription, \$6.00. Single Copies, 15 Cts.

SCIENCE is the official organ of the American Association for the Advancement of Science. Information regarding membership in the Association may be secured from the office of the permanent secretary, in the Smithsonian Institution Building, Washington, D. C.

Entered as second-class matter July 18, 1923, at the Post Office at Lancaster, Pa., under the Act of March 8, 1879.

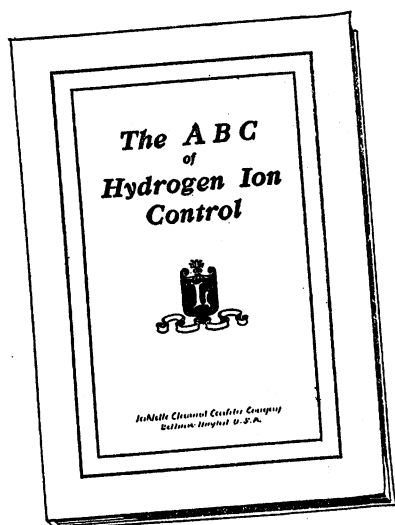
## DIVERSE DOCTRINES OF EVOLUTION, THEIR RELATION TO THE PRACTICE OF SCIENCE AND OF LIFE<sup>1</sup>

As a fresh unhackneyed subject for an after dinner address I propose to talk on evolution. Some doctrines of evolution are not so hackneyed as others. My own favorite doctrine has been only too much neglected. I now discover with pleased surprise that this very doctrine is coming into fashion. No longer can its exposition be described as a voice or two crying in the wilderness. Philosophical congresses discuss it, eminent zoologists discant upon it; still more significant, it has acquired a name that identifies it. Naturally, therefore, while it is in sight, I seize this opportunity to greet its emergence; to promote its publicity. Therefore, prepare for propaganda. See that your defense complexes are in working order. One needs nowadays to keep them ready for instant use; so you will not complain at my giving them a bit of drill.

The name that the doctrine has acquired is Emergent Evolution. This may be a poor name, but any name is better than being nameless; so one must be thankful. The different ways of conceiving the evolutionary process have diverse bearings upon one's attitude toward the world; upon the temperament and outlook of the student of science; upon the course that science takes. What I wish to do is, not to expound emergent evolution as a doctrine, but to inquire into its bearings on these matters, as compared with those of other ways of looking at evolution; to set forth my own notions of these bearings. You will see that to me this doctrine appears an edifying one. My thesis is that the conscious acceptance of the doctrine of emergent evolution and of its implications would greatly ameliorate biological science as practiced and as preached; would much moderate, mitigate and amend its influence on the human outlook and the practice of living. I speak therefore as a hopeful uplifter.

Evolution is often identified with perfect mechanism; or at least held to be consistent and coincident in its operation with mechanism. According to that doctrine in its perfection, the universe as a whole, or

<sup>1</sup> Address of the retiring chairman of the Zoological Section of the American Association for the Advancement of Science, December 28, 1926.



*Free on request*

A book of valuable and practical information on the application of Hydrogen Ion Control in science and industry.

**LaMotte Chemical Products Co.**  
418 Light St. Baltimore, Md., U. S. A.

Use  
the **Hoke**

## Micrometric Control

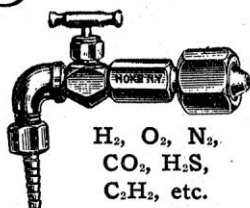
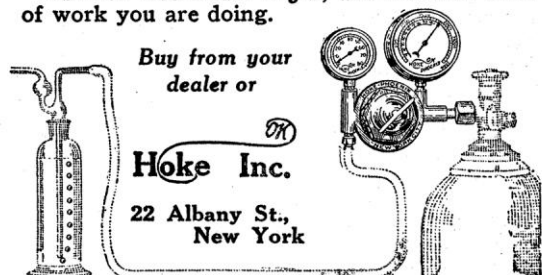
For regulating the flow of gases from tanks, when your work is not sufficiently exacting to demand a Hoke-Phoenix Regulator (reducing valve).

It is a carefully-made needle-valve, with connection for tank and tapered hose-end to fit hose.

No. 133. As illustrated. In ordering mention gas to be used .....\$5.00

No. 153. With yoke to fit dental oxygen tanks ..... 6.00

Ask for free folder 605-S, and mention kind of work you are doing.



H<sub>2</sub>, O<sub>2</sub>, N<sub>2</sub>,  
CO<sub>2</sub>, H<sub>2</sub>S,  
C<sub>2</sub>H<sub>2</sub>, etc.

## SIX VALUABLE LITTLE BOOKS ON SCIENCE

### RESEARCH NARRATIVES

Volume One \$ .50

Volume Two 1.00

Short tales, in simple terms, of research, discovery and invention. Fifty in each volume.

*From Engineering Foundation.*

### MAN AND HIS AFFAIRS

\$2.50

Human nature and its management as seen by a management engineer.

*By Walter N. Polakov.*

### RAINMAKING AND OTHER WEATHER VAGARIES

\$2.50

A scientific analysis of man's fruitless attempts to regulate rainfall.

*By W. J. Humphreys, U. S. Weather Bureau.*

### PROBLEMS OF HUMAN REPRODUCTION

\$2.50

A collection of scientifically established facts concerning the problems of human reproduction. Non-technical.

*By Paul Popenoe.*

### FUNDAMENTAL CONCEPTS OF PHYSICS

\$2.00

An admirable summary of the evolution of the leading physical theories of today.

*By Paul E. Heyl, Bureau of Standards.*

Send for the Booklet "Science as Good Reading"—It's Free

**THE WILLIAMS & WILKINS COMPANY**

*Publishers of Scientific Books and Periodicals*

BALTIMORE

U. S. A.



## School of Medicine

### NEW ADMISSION REQUIREMENTS

At least three years of approved college work including specified requirements in the sciences.

### DEGREE OF B.S. IN MEDICAL SCIENCE

This degree may be awarded at the end of the third or fourth year to students fulfilling certain conditions including the preparation of a thesis.

### DEGREE OF DOCTOR OF MEDICINE

Upon satisfactory completion of prescribed four-year course.

For catalogue and information, address  
**THE DEAN, Washington University**  
 School of Medicine, St. Louis,  
 Missouri

## Johns Hopkins University SCHOOL OF MEDICINE

The School of Medicine is an Integral Part of the University and is in the Closest Affiliation with the Johns Hopkins Hospital.

### ADMISSION

Candidates for admission must be graduates of approved colleges or scientific schools with at least two years' instruction (including laboratory work) in chemistry, and one year each in physics and biology, together with evidence of a reading knowledge of French and German.

Each class is limited to a maximum of 75 students, men and women being admitted on the same terms. Applications may be sent any time during the academic year but not later than June 15th.

If vacancies occur, students from other institutions desiring advanced standing may be admitted to the second or third year provided they fulfill our requirements and present exceptional qualifications.

### INSTRUCTION

The academic year begins the Tuesday nearest October 1, and closes the second Tuesday in June. The course of instruction occupies four years and especial emphasis is laid upon practical work in the laboratories, in the wards of the Hospital and in the dispensary.

### TUITION

The charge for tuition is \$400 per annum, payable in three installments. There are no extra fees except for certain expensive supplies, and laboratory breakage.

Inquiries should be addressed to the Executive Secretary of the School of Medicine, Johns Hopkins University, Washington and Monument Streets, Baltimore, Maryland.

## School of Medicine Western Reserve University

Cleveland, Ohio

### NEW LABORATORIES AND HOSPITALS

### RESTRICTED CLASSES

### THOROUGH INSTRUCTION

### LARGE CLINICAL FACILITIES

### HIGH STANDARD OF SCHOLARSHIP

Admission confined to students having academic degrees and to Seniors in Absentia.

*For information address:*

### THE REGISTRAR

2109 Adelbert Rd.

CLEVELAND

## School of Medicine and Dentistry THE UNIVERSITY OF ROCHESTER

Medical School, Strong Memorial Hospital and Out-Patient Department of the University of Rochester and the Municipal Hospital of the City of Rochester, all under one roof. Medical, Surgical, Obstetric, Pediatric, Contagious and Neurological patients admitted. Unusual opportunities for school and hospital cooperation in medical and dental teaching.

### Admission

Medical and dental candidates must have completed three years of college work with special requirements in chemistry, physics and biology. The first class will not exceed 40, men and women being admitted on equal terms. Instruction will begin September 22, 1927.

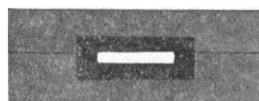
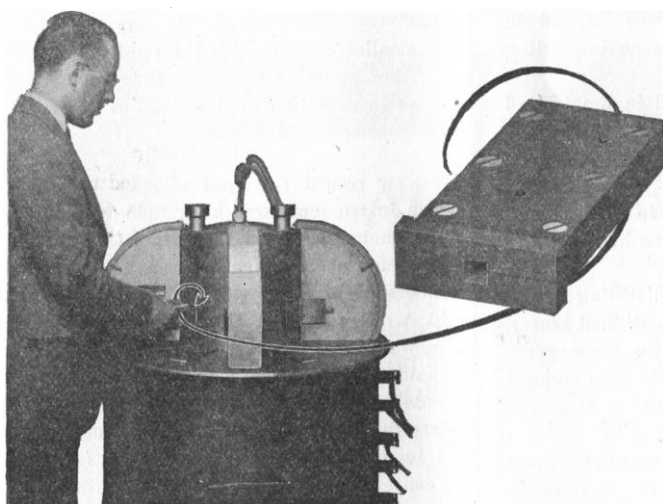
### Tuition

Charge for tuition will be \$300 per annum, payable in equal installments at the beginning of each semester.

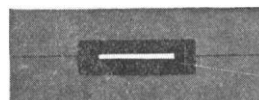
*For information address*

The Dean—School of Medicine and Dentistry, Crittenden Blvd., Rochester, N. Y.

# Interchangeable slit systems



*Used in obtaining diffraction patterns of powdered crystals mounted in capillary tube. Gives a beam identical with that given by the former type of slit system.*



*Used in obtaining diffraction patterns of thin sheets of a substance transparent to x-rays.*



*Used with a filter in determining preferred orientations of rolled metals, etc. Without a filter, is suitable for the Laue method.*

## ~ a new important feature of the G-E X-ray Diffraction Apparatus

These three types of slit systems can be used interchangeably in the improved G-E X-ray Diffraction Apparatus, which has been altered to provide for this feature.

In the above view of these slits, the white area represents the slit that defines the x-ray beam; the black area represents the larger, bell-shaped slit, the edges of which stop the stray rays that would fog the film.

The ability of this apparatus to take diffraction patterns of several types of specimens makes its use most advantageous in research and factory-control work.

Address the Special Products Section at Schenectady for complete information.



This apparatus provides the best methods for the accurate determination of most crystal structures, for supplementing ordinary metallographic methods, and in some cases for qualitative chemical analysis of solids.

# GENERAL ELECTRIC

GENERAL ELECTRIC COMPANY, SCHENECTADY, N. Y., SALES OFFICES IN PRINCIPAL CITIES

840-3