

SCIENCE

VOL. LXIII

MAY 28, 1926

No. 1639

WILLIAM BATESON

CONTENTS

<i>William Bateson: PROFESSOR T. H. MORGAN.....</i>	531
<i>The Relation of Mapping to Modern Civilization: DR. E. LESTER JONES.....</i>	535
<i>Scientific Events:</i>	
<i>Dutch Exploration in Central Borneo; The American Museum Expedition to Greenland; An International Organization for Standardization; Chemical Warfare Service Consultants.....</i>	538
<i>Scientific Notes and News.....</i>	540
<i>University and Educational Notes.....</i>	544
<i>Discussion and Correspondence:</i>	
<i>The Case of Astacus vs. Potamobius: DR. C. W. STILES and CLARA EDITH BAKER. The Decomposition of Certain Toxins by Known Organisms: DR. WRIGHT A. GARDNER. Cavallini's "Asexual Cycle in Arcella": DR. BRUCE D. REYNOLDS. The Tropical Research Station of the New York Zoological Society: JAY F. W. PEARSON.....</i>	544
<i>Scientific Books:</i>	
<i>Rowley's Taxidermy and Museum Exhibition: PROFESSOR J. GRINNELL.....</i>	546
<i>Special Articles:</i>	
<i>Are Dromatherium and Microconodon Mammals? PROFESSOR G. G. SIMPSON. Viability of Desiccated or Glycerinated Cells of a Chicken Sarcoma: WARO NAKAHARA. The Magnetic Properties of Atoms: JACOB KUNZ, JOHN B. TAYLOR and WORTH H. RODEBUSH</i>	548
<i>The American Association for the Advancement of Science: DR. BURTON E. LIVINGSTON.....</i>	551
<i>Science News</i>	x

SCIENCE: A Weekly Journal devoted to the Advancement of Science, edited by J. McKeen Cattell and published every Friday by

THE SCIENCE PRESS

Lancaster, Pa. Garrison, N. Y.
New York City: Grand Central Terminal.
Annual Subscription, \$6.00. Single Copies, 15 Cts.

SCIENCE is the official organ of the American Association for the Advancement of Science. Information regarding membership in the Association may be secured from the office of the permanent secretary, in the Smithsonian Institution Building, Washington, D. C.

Entered as second-class matter July 18, 1923, at the Post Office at Lancaster, Pa., under the Act of March 8, 1879.

WITH the recovery of Mendel's paper a new era in the study of heredity began. Bateson at once became a recognized leader in the new movement. His earlier work on variation had supplied him with a wealth of material that only waited the clue that Mendel's theory afforded, and his experimental work on discontinuous variations, that had already started before 1900, had prepared him for the acceptance and realization of the profound significance of the new theory.

The ardor with which Bateson undertook to apply, test and extend Mendel's discovery, the keenness that he brought to bear on the new work, and the complete frankness with which he discussed "unconformable cases" had a wide influence on the rapidly growing school of genetics.

He did not try to hide his contempt for second-rate work, and he was unsparing in the exposure of the pretensions of those who were satisfied with lower standards. This sometimes led to acrimonious rejoinders, but it put fear into the hearts of those who continued to use an outworn phraseology of variation and heredity that no longer had any real significance. He hit and he hit hard! If he disagreed he said so flatly, and could always give a cogent argument for his disagreement. His intellectual rectitude was beyond all praise and recognized by friend and foe alike. His courtesy and hospitality were unfailing, and he will be missed by a host of admirers, and regretted, I can not but think, by those of his opponents who found him a foeman worthy of their steel.

His own work extended the fundamental principles of genetics in many directions. The more difficult the problem the more it attracted him if it offered an opportunity for exact experimental investigation. The perseverance with which he followed every clue—"treasure your exceptions," he said—and the high standards of work that he insisted on for himself as well as for others made a deep impression on his colleagues. His death came suddenly in the midst of his labors, and students of genetics the world over have felt deeply the loss of a friend of outstanding intellect and commanding personality.

Bateson's first important contribution dealt with material collected in this country in 1883. He had seen an announcement in the Johns Hopkins University circular that *Balanoglossus* had been found at the Marine Station, then situated at Hampton, Virginia, and wrote to Brooks asking permission to

Marine Biological Laboratory Woods Hole, Mass.

INVESTIGATION

Entire Year

Facilities for research in Zoology, Embryology, Physiology, and Botany. Fifty-two private laboratories \$100 each and ninety-four private laboratories \$200 each for not over three months. Fifty-six tables are available for beginners in research who desire to work under the direction of members of the staff. The fee for such a table is \$50.00.

INSTRUCTION

June 29 to August
9, 1926

Courses of laboratory instruction with lectures are offered in Invertebrate Zoology, Protozoology, Embryology, Physiology and Morphology and Taxonomy of the algae. Each course requires the full time of the student. Fee, \$75.00.

BIOLOGICAL SUPPLIES

For the classroom, museum or collector.

First class preparations.

Send for new (1926) Catalogue No. 1, Zoological and Embryological material, Life Histories and Habitat Groups.

Catalogue No. 2, Botanical material.

Catalogue No. 3, Microscopic slides.

Address all correspondence regarding material and catalogues to:

Supply Department,

GEO. M. GRAY,

Curator, Woods Hole, Mass.

The annual announcement will be sent on application to The Director, Marine Biological Laboratory, Woods Hole, Mass.



Johns Hopkins University SCHOOL OF MEDICINE

The School of Medicine is an Integral Part of the University and is in the Closest Affiliation with the Johns Hopkins Hospital.

ADMISSION

Candidates for admission must be graduates of approved colleges or scientific schools with at least two years' instruction, including laboratory work, in chemistry, and one year each in physics and biology, together with evidence of a reading knowledge of French and German.

Each class is limited to a maximum of 75 students, men and women being admitted on the same terms. Applications may be sent any time during the academic year but not later than June 15th.

If vacancies occur, students from other institutions desiring advanced standing may be admitted to the second or third year provided they fulfill the requirements and present exceptional qualifications.

INSTRUCTION

The academic year begins the Tuesday nearest October 1, and closes the second Tuesday in June. The course of instruction occupies four years and especial emphasis is laid upon practical work in the laboratories, in the wards of the Hospital and in the dispensary.

TUITION

The charge for tuition is \$300 per annum, payable in three installments. There are no extra fees except for certain expensive supplies, and laboratory breakage.

The annual announcement and application blanks may be obtained by addressing the

Registrar of the School of Medicine, Johns Hopkins University, Washington and Monument Sts., Baltimore, Md.

Owing to an extensive building program about to be inaugurated at the Hospital and Medical School it has been deemed necessary to withdraw, for the next two years at least, post-graduate instruction during the year as well as the summer course formerly given during June and July.

MANUAL OF INJURIOUS INSECTS

By Glenn W. Herrick, Cornell University

"It is a most excellent work and Professor Herrick and the publishers are to be congratulated on its completion. It is clear and concise throughout, the author wastes no time in approaching his subject and no words in dealing with it. For a book of its size the amount of material is surprising and nothing of importance appears to have been omitted. Furthermore, for a textbook it is unusually up to date."—Professor Raymond C. Osburn, Ohio State University.

\$4.50

THE PHYSIOLOGY OF PLANTS

The Principles of Food Production

By George James Peirce, Stanford University

An analytical discussion of the most important factors in plant physiology, being those which are directly connected with the production of food. The behavior of plants—both vegetative and productive—is shown to represent the reaction of the living organisms, themselves made up of physical-chemical systems of diverse composition, to stable or transient influences, themselves the components of the vast complex of Nature.

\$3.00

THE PEDIGREE OF THE HUMAN RACE

By Harris H. Wilder, Smith College

"After carefully examining the book, it seems to me to be a volume superior in its scientific treatment of details, that show more clearly than any other treatise because of its comprehensive character, the relationship between the higher types of anthropoids and man as well as the relation between the different physical types of man."—Professor Daniel H. Kulp II, Columbia University.

\$3.25

HENRY HOLT AND COMPANY

One Park Avenue

New York

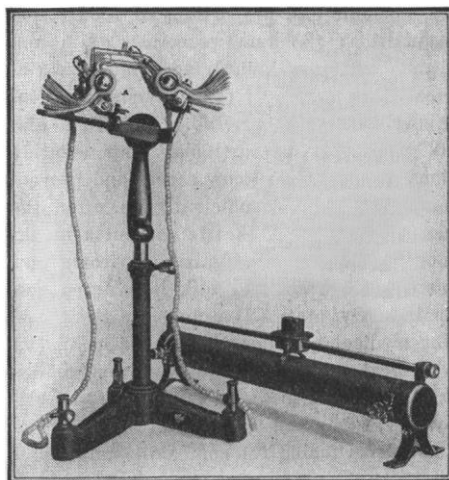
For Laboratory Research and Pioneering Chemists

Industrial progress can be measured by laboratory findings. Most important production processes are traceable to the pioneering genius of the laboratory worker. And it has often been through the employment of an obscure force that invaluable discoveries have been made.

Such a force is that of ultraviolet light, at present much discussed yet comparatively unemployed. Already some of its possibilities have been demonstrated, not alone by important scientific findings, but by their practical adaptation to regular commercial enterprise. With ultraviolet energy as an adjunct, the pioneering tendency has been rewarded by important biologic and chemical discoveries. Worthy of specific note are the results achieved in the field of metallurgy.

Important as these findings may be, the vast potentialities of ultraviolet energy are far more significant. The laboratory technician will find that, under its influence, organic compounds are especially reactive. Its acceleration of sunlight influence will also prove of interest.

It has been the privilege of the manufacturers of HANOVIA ultraviolet lamps to work very closely with physicists and chemists. For the past twenty years they have



Hanovia Quartz Mercury Arc Lamp, complete on stand with Sliding Contact Rheostat

constantly studied scientific requirements. A thorough appreciation of laboratory needs is evident in the HANOVIA Quartz Mercury Arc Lamp, for scientific purposes. This lamp, a potent source of ultraviolet light, is designed for constant and immediate laboratory use.

Laboratory Quartz Ware

With the employment of ultraviolet, the necessity for perfect quartz ware becomes immediate. Quartz ware of unique transparency and in shapes difficult to obtain elsewhere, is regularly carried in stock. Special order work is handled with noteworthy dispatch. Besides its use in connection with ultraviolet light, many laboratory workers have shown a decided preference for quartz over ordinary glass-ware on account of its extreme fusing point (1750° C.), its insolubility, its transparency and low coefficient of expansion (0° to 1000° C., .0000054).

HANOVIA CHEMICAL & MFG. CO.

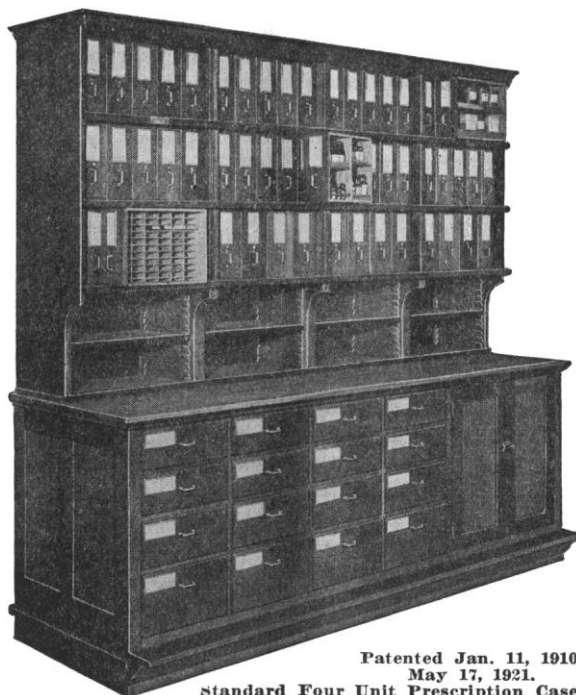
Chestnut St. & New Jersey R. R. Ave., Newark, N. J.

☐ Please send me your pamphlet describing the Quartz Mercury Arc Lamp.

☐ Please send me your pamphlet describing your Quartz Laboratory Ware.

SCHWARTZ AUXILIARY DESKS

FURNISH ABUNDANCE OF FILING SPACE FOR LABORATORY
SUPPLIES AND CONVENIENT WORK BENCHES WITH
CHEMICALS, REAGENTS, APPARATUS AND SAMPLES
RIGHT AT YOUR FINGER TIPS



Patented Jan. 11, 1910.
May 17, 1921.
Standard Four Unit Prescription Case.

Each and every item so indexed that they are instantly available when required, and are found in best of condition.

The Schwartz Sectional System has been adopted by leading universities, as well as various departments of the U. S. Government, including the Bureau of Standards and Bureau of Chemistry.

Write for Booklet "S," Showing Illustrations
of Standard Units with Net Prices

SCHWARTZ SECTIONAL SYSTEM
INDIANAPOLIS, INDIANA

NEW MICROSCOPE SLIDE CATALOG
Several hundred new preparations are described in
the new and enlarged 1926 edition of the Turtox
Microscope Slide Catalog
Write for your copy today



*The Sign of the Turtox Pledges Absolute
Satisfaction*

General Biological Supply House
761-S E. 69th Place Chicago, Illinois

MIRAKEL
VEST POCKET
BINOCULARS



WIDE FIELD

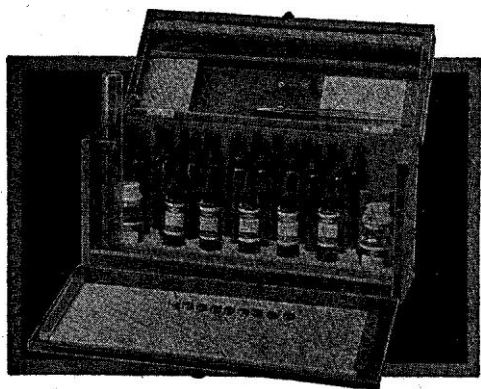
working distance $2\frac{1}{4}$ "—\$2.50 extra. Write for circular.
ANTHONY FIALA, 25 Warren St., New York

"A most surprising
glass; large field, sharp;
in many cases almost
equal to my large heavy
glasses."—J. M. Mur-
dock.

Fine for Geologist,
Scientist, Hunters, Ex-
plorers or for family
use. So light can be
carried in vest-pocket
easily. A genuine 5
power Jena
Prism, with case. \$25
Send for them.

20 Power Magnifier;
adjustable to Mirakel.

Hydrogen Ion Control



LaMotte Hydrogen Ion Testing Set
(Model 8B)

Only 1 drop of material needed for a test.
A single test made in a few seconds.
Results accurate to 0.1 pH.

New illustrated catalog sent free on request.

LaMotte Chemical Products Co.

McCormick Building Baltimore, Md., U. S. A.

PLANT PHYSIOLOGIST AND PATHOLOGIST

M.Sc., Ph.D., desires new position. Twelve years' teaching
in three Universities, recently head of department in small
college, numerous published researches, many references,
best health. Available June 15. Address, "P. J.," care of
Science, 3939 Grand Central Terminal, New York, N. Y.

GEOLOGIST, EXPERIENCED

Now in responsible position in medium sized department
wishes to improve position. Long experience as teacher,
graduate student, member survey. Wishes charge of me-
dium sized department or of physiography in large depart-
ment. Address "A. B. F.," care Science, 3939 Grand Cen-
tral Terminal, New York, N. Y.

BIOLOGICAL CHEMIST—Young man desires
position in Northeastern U. S. Experienced in nu-
trition research. Holds degree of B.S. in chemistry;
M.S. in biological chemistry. Minored in medical
sciences and trained in histological technique. Must
defer final degree. Address, "S. H.," care Science,
Grand Central Terminal, New York, N. Y.

POSITION as teacher in any of the following subjects in
high school or college: Physics, mathematics, electrical
engineering, constitutional law, economics, mechanical
drawing, elementary chemistry, and possibly others. At
present candidate for Ph.D. degree. Have worked at Bu-
reau of Standards several years. Address, "J. O.," care of
Science, 3939 Grand Central Terminal, New York, N. Y.

MATHEMATICS TUTOR WANTED with knowl-
edge of astrophysics. Graduate student preferred.
Must be willing and able to drive car. Delightful
summer situation in Catskills. \$100.00 a month and
living expenses. Address, "J. A. K.," Science, 3939
Grand Central Terminal, New York, N. Y.

SCIENTIFIC PERIODICALS

Chemical, Medical and allied subjects. Complete
files, volumes and copies, bought and sold. Kindly
send us a list of your wants and items of which you
may wish to dispose.

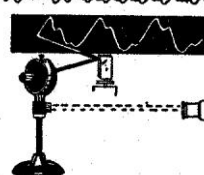
B. LOGIN & SON

29 East 21st Street

New York, N. Y.

PHONELESCOPE

TEACHES THROUGH THE
The Movies for all
SOUND
WAVE MOTION
ELECTRICITY
HERBERT GROVE DORSEY CINCINNATI
PHONE 4-1175



VACUUM PUMPS

28" vacuum guaranteed. $1\frac{1}{2}$
cu. ft. free air per minute.
Piston type for continuous
duty. Complete with motor
gauge, etc.

Write for circular.

ALSO ENGINEERING CO.
47 W. 63rd St., New York