

SCIENCE

VOL. LXIII FEBRUARY 12, 1926 No. 1624

CONTENTS

<i>The American Association for the Advancement of Science:</i>	
<i>The Scientific Method and Authority:</i> PROFESSOR EDWIN LINTON	171
<i>Platform of the Engineering Foundation:</i> ALFRED D. FLINN	178
<i>Thomas Allison Smith:</i> DR. WILLIAM C. LUSK.....	179
<i>Scientific Events:</i>	
<i>The International Congress of Plant Sciences; The Association of Asphalt Paving Technologists; The National Museum of Engineering and Industry; Lectures on Evolution at the California Institute of Technology</i>	180
<i>Scientific Notes and News</i>	182
<i>University and Educational Notes</i>	186
<i>Discussion and Correspondence:</i>	
<i>The Danger of Earthquakes in New England:</i> IRVING B. CROSBY. <i>A Plea for the Retention of the Term "Bios":</i> MARGARET B. MACDONALD. <i>A Few Suggestions Regarding Reprints:</i> PROFESSOR A. W. MEYER. <i>Scientific Research in the United States:</i> DR. J. McKEEN CATTELL	186
<i>Quotations:</i>	
<i>The Torch of Pure Science</i>	188
<i>Scientific Books:</i>	
<i>De Martonne's Traité de Géographie Physique:</i> DR. W. J. HUMPHREYS	189
<i>Special Articles:</i>	
<i>An Apparent Case of Monocentric Mitosis in Sciara:</i> DR. CHAS. W. METZ	190
<i>Societies and Academies:</i>	
<i>The American Physiological Society:</i> PROFESSOR WALTER J. MEEK. <i>The American Society for Pharmacology and Experimental Therapeutics:</i> PROFESSOR E. D. BROWN	191
<i>Science News</i>	x

SCIENCE: A Weekly Journal devoted to the Advancement of Science, edited by J. McKeen Cattell and published every Friday by

THE SCIENCE PRESS

Lancaster, Pa. Garrison, N. Y.
New York City: Grand Central Terminal.

Annual Subscription, \$6.00. Single Copies, 15 Cts.

SCIENCE is the official organ of the American Association for the Advancement of Science. Information regarding membership in the association may be secured from the office of the permanent secretary, in the Smithsonian Institution Building, Washington, D. C.

Entered as second-class matter July 18, 1925, at the Post Office at Lancaster, Pa., under the Act of March 3, 1879.

THE SCIENTIFIC METHOD AND AUTHORITY¹

But the mortellest enemy unto knowledge, and that which hath done the greatest execution unto truth, hath beene a peremptory adhesion unto *Authority*, and especially the establishing of our beliefs upon the dictates of Antiquities. For (as every capacity may observe) most men of Ages present, so superstitiously do look upon Ages past, that the *Authorities* of the one excel the reasons of the other.—*Sir Thomas Browne*.

One who is ignorant of the history of science is ignorant of the struggle by which mankind has passed from routine and caprice, from superstitious subjection to nature, from efforts to see it magically, to intellectual self-possession.—*John Dewey*.

Discussion stimulates while controversy depresses.

—*Dr. Florence Sabin*.

The Scientific method must ultimately spread out to every human affair.—*H. G. Wells*.

A religion of authority gives rise to a scholastic theology; by the same necessity the religion of the spirit seeks to find form and expression in a theology which is increasingly scientific.—*Auguste Sabatier*.

Prove all things; hold fast that which is good.

—*St. Paul*.

In every true searcher of nature there is a kind of religious reverence.—*Einstein*.

For who would keep an ancient form

Thro' which the spirit breathes no more?

—*Tennyson*.

THE struggle between that spirit in man which urges him to seek an explanation of things as they are and that spirit which prefers to rest upon the slumber-wooing bosom of tradition has been the theme of many learned treatises and of innumerable disputations.

To Dr. John W. Draper it seemed best described as a conflict between science and religion.

When Andrew D. White came to tell the story of the actions and reactions between the desire to know and the will to believe he gave to the world his admirable "History of the Warfare between Science and Theology."

¹ Address of the retiring vice-president of Section F—Zoology—American Association for the Advancement of Science—given at Kansas City, December 29, 1925.

Yale University

SCHOOL of MEDICINE

FOUNDED 1812

Affiliated with the New Haven
Hospital and New Haven
Dispensary

For Information, Address:
The Registrar, Yale University
School of Medicine, New Haven,
Conn.

Johns Hopkins University SCHOOL OF MEDICINE

The School of Medicine is an Integral Part of the University and is in the Closest Affiliation with the Johns Hopkins Hospital.

ADMISSION

Candidates for admission must be graduates of approved colleges or scientific schools with at least two years' instruction, including laboratory work, in chemistry, and one year each in physics and biology, together with evidence of a reading knowledge of French and German.

Each class is limited to a maximum of 75 students, men and women being admitted on the same terms. Applications may be sent any time during the academic year but not later than June 15th.

If vacancies occur, students from other institutions desiring advanced standing may be admitted to the second or third year provided they fulfill the requirements and present exceptional qualifications.

INSTRUCTION

The academic year begins the Tuesday nearest October 1, and closes the second Tuesday in June. The course of instruction occupies four years and especial emphasis is laid upon practical work in the laboratories, in the wards of the Hospital and in the dispensary.

TUITION

The charge for tuition is \$360 per annum, payable in three installments. There are no extra fees except for certain expensive supplies, and laboratory breakage.

The annual announcement and application blanks may be obtained by addressing the

Registrar of the School of Medicine, Johns Hopkins University, Washington and Monument Sts., Baltimore, Md.

Owing to an extensive building program about to be inaugurated at the Hospital and Medical School, it has been deemed necessary to withdraw, for the next two years at least, post-graduate instruction during the year as well as the summer course formerly given during June and July.

BOSTON UNIVERSITY SCHOOL OF MEDICINE

ORGANIZED IN 1873

ANNOUNCEMENT

may be obtained by application to

WESLEY T. Lee, M.D., Registrar

80 East Concord Street,

Boston,

Massachusetts

School of Medicine Western Reserve University

Cleveland, Ohio

NEW LABORATORIES AND HOSPITALS

RESTRICTED CLASSES

THOROUGH INSTRUCTION

LARGE CLINICAL FACILITIES

HIGH STANDARD OF SCHOLARSHIP

Admission confined to students having academic degrees and to Seniors in Absentia.

For information address:

THE REGISTRAR

2109-15 Adelbert Rd.

CLEVELAND

Marine Biological Laboratory

Woods Hole, Mass.

INVESTIGATION

Entire Year

Facilities for research in Zoology, Embryology, Physiology, and Botany. Fifty-two private laboratories \$100 each and ninety-four private laboratories \$200 each for not over three months. Fifty-six tables are available for beginners in research under the direction of members of the staff. The fee for such a table is \$50.00.

INSTRUCTION

June 29 to August

9, 1926

SUPPLY

DEPARTMENT

Open the Entire

Year



Courses of laboratory instruction with lectures are offered in Invertebrate Zoology, Protozoology, Embryology, Physiology and Morphology and Taxonomy of the Algae. Each course requires the full time of the student. Fee, \$75.00.

Animals and plants, preserved, living, and in embryonic stages. Preserved material of all types of animals and of Algae, Fungi, Liverworts and Mosses furnished for classwork, or for the museum. Living material furnished in season as ordered. Microscopic slides in Zoology, Botany, Histology, Bacteriology. Catalogues of Zoological and Botanical material and Microscopic Slides sent on application. New Zoology catalogue ready in February. For catalogues and all information regarding material, address:

GEO. M. GRAY,

Curator, Woods Hole, Mass.

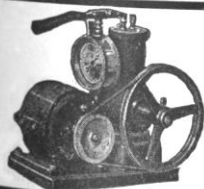
The annual announcement will be sent on application to The Director, Marine Biological Laboratory, Woods Hole, Mass.

1926-27 Biological Red Book
A new enlarged edition is now ready
Write for your copy today



The Sign of the Turtox Pledges Absolute Satisfaction

General Biological Supply House
761-3 E. 69th Place Chicago, Illinois



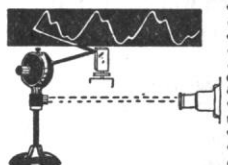
VACUUM PUMPS

28" vacuum guaranteed. 1½ cu. ft. free air per minute. Piston type for continuous duty. Complete with motor gauge, etc.

Write for circular.

ALSO ENGINEERING CO.
47 W. 63rd St., New York

PHONESCOPE
TEACHES THROUGH THE
The Movies for all
SOUND
WAVE MOTION
ELECTRICITY
HERBERT GROVE DORSEY GLOUCESTER MASSACHUSETTS



School of Medicine and Dentistry

THE UNIVERSITY OF ROCHESTER

Medical School, Strong Memorial Hospital and Out-Patient Department of the University of Rochester and the Municipal Hospital of the City of Rochester, all under one roof. Medical, Surgical, Obstetric, Pediatric, Contagious and Neurological patients admitted. Unusual opportunities for school and hospital cooperation in medical and dental teaching.

Admission

Medical and dental candidates must have completed three years of college work with special requirements in chemistry, physics and biology. The entering class will not exceed 40, men and women being admitted on equal terms. Instruction will begin September 23, 1926.

Tuition

Charge for tuition will be \$300 per annum, payable in equal installments at the beginning of each semester.

For information address

The Dean—School of Medicine and Dentistry, Elmwood Avenue, Rochester, N. Y.

COLLEGE OF MEDICINE OF

LONG ISLAND COLLEGE HOSPITAL

Founded 1858. Sixty-eighth annual session begins September 27, 1926.

Admission: Not less than two years of college work leading toward a baccalaureate degree, including specified courses.

Facilities: Well-equipped laboratories, with full-time teachers. Superior clinical advantages in The Long Island College Hospital and five other leading Hospitals in Brooklyn.

For particulars, address

THE DEAN OF THE MEDICAL SCHOOL
350 Henry Street Brooklyn, New York

GRAMERCY BLOWERS

Gramercy Reagent Bottles

Gramercy Stirrers

Write for additional data and prices

EIMER & AMEND

Est. 1851

Inc. 1897

Third Ave., 18th to 19th St. New York, N. Y.

UNDER THE EDITORSHIP OF J. McKEEN CATTELL

SCIENCE

A weekly journal, established in 1883, devoted to the advancement of the natural and exact sciences, the official organ of the American Association for the Advancement of Science, generally regarded as the professional journal of American men of science.

Annual Subscription \$6.00; single copies 15 cents.

THE SCIENTIFIC MONTHLY

An illustrated magazine, continuing the editorial policies of The Popular Science Monthly established in 1872, devoted to the diffusion of science, publishing articles by leading authorities in all departments of pure and applied science, including the applications of science to education and society.

Annual Subscription \$5.00; single copies 50 cents.

THE AMERICAN NATURALIST

A bi-monthly journal established in 1867, devoted to the biological sciences with special reference to the factors of organic evolution.

Annual Subscription \$5.00; single copies \$1.00.

SCHOOL AND SOCIETY

A weekly journal covering the field of education in relation to the problems of American democracy. Its objects are the advancement of education as a science and the adjustment of our lower and higher schools to the needs of modern life.

Annual Subscription \$5.00; single copies 15 cents.

AMERICAN MEN OF SCIENCE

A BIOGRAPHICAL DIRECTORY

The third edition of the Biographical Directory of AMERICAN MEN OF SCIENCE contains the records of more than 9,500 living men of science, as compared with about 4,000 in the first edition and about 5,500 in the second edition.

Price: Ten Dollars, net, postage paid.

THE SCIENCE PRESS

GRAND CENTRAL TERMINAL,

NEW YORK, N. Y.

SUBSCRIPTION ORDER

TO THE SCIENCE PRESS

GRAND CENTRAL TERMINAL, NEW YORK, N. Y.

Please find enclosed in payment of subscription to
..... for the year beginning

Name

Address

.....