

SCIENCE

Vol. LXI

JUNE 19, 1925

No. 1590

CONTENTS

<i>Ether-drift Experiments at Mount Wilson: PROFESSOR DAYTON C. MILLER</i>	617
<i>Risks incurred in the Introduction of Alien Game Birds: J. GRINNELL</i>	621
<i>Scientific Events:</i>	
<i>A National Park in the Belgian Congo; The Society for Cultural Relations with Foreign Countries of the Soviet Union; The Daniel Guggenheim School of Aeronautics; National Research Fellowships in the Biological Sciences</i>	623
<i>Scientific Notes and News</i>	626
<i>University and Educational Notes</i>	629
<i>Discussion and Correspondence:</i>	
<i>Bacterial Catalase: DR. JAMES WALTER MCLEOD. The Reform of the Calendar: DR. CHARLES CLAYTON WYLIE. The Jonas Viles, Jr., Memorial Scholarship: PROFESSOR W. C. CURTIS</i>	630
<i>Scientific Books:</i>	
<i>Sinclair Lewis's Arrowsmith: DR. THOMAS J. LEBLANC</i>	632
<i>Scientific Apparatus and Laboratory Methods:</i>	
<i>Heavy Mineral Oil as a Permanent Non-volatile Preservative for Valuable Biological Material: DR. JOSEPH C. CHAMBERLIN</i>	634
<i>Special Articles:</i>	
<i>Arc Spectrum Regularities for Ruthenium: DR. W. F. MEGGERS and DR. O. LAPORTE. Manganese as a Cure for a Chlorosis of Spinach: DR. FORMAN T. MCLEAN and DR. BASIL E. GILBERT</i>	635
<i>The American Chemical Society:</i>	
<i>Physical and Inorganic Chemistry: ARTHUR E. HILL</i>	637
<i>Science News</i>	x

SCIENCE: A Weekly Journal devoted to the Advancement of Science, edited by J. McKeen Cattell and published every Friday by

THE SCIENCE PRESS

Lancaster, Pa.

Garrison, N. Y.

New York City: Grand Central Terminal.

Annual Subscription, \$6.00. Single Copies, 15 Cts.

SCIENCE is the official organ of the American Association for the Advancement of Science. Information regarding membership in the association may be secured from the office of the permanent secretary, in the Smithsonian Institution Building, Washington, D. C.

Entered as second-class matter July 18, 1923, at the Post Office at Lancaster, Pa., under the Act of March 8, 1879.

ETHER-DRIFT EXPERIMENTS AT MOUNT WILSON¹

AFTER the wave theory of light was established, it became necessary to assume the existence of an all-pervading medium in which the waves could be developed and transmitted; this hypothetical medium was called the "ether." It was endowed with such properties as were necessary for the explanation of observed phenomena. Several physicists sought to prove the existence of the ether by direct experiment. The most fundamental of such proposals was that of Professor A. A. Michelson, made in 1881, based upon the idea that the ether as a whole is at rest and that light waves are propagated in the free ether in any direction and always with the same velocity with respect to the ether. It was also assumed that the earth in its orbital motion around the sun passes freely through this ether as though the latter were absolutely stationary in space. The experiment proposed to detect a relative motion between the earth and the ether, and it is this relative motion which is often referred to as "ether-drift." The experiment is based upon the argument that the *apparent* velocity of light would vary according to whether the observer is carried by the earth in the line in which the light is traveling, or at right angles to this line. The velocity of light is 300,000 kilometers per second, while the velocity of the earth in its orbit is 1/10,000th part of this, 30 kilometers per second. If the earth's orbital velocity were directly effective, the two apparent velocities should differ by 30 kilometers per second or by one part in 10,000. However, there is no known method of measuring the velocities under such simple conditions. All methods require the ray of light to travel to a distant station and back again to the starting point, and a positive effect of the earth's motion on the ray going outward would be neutralized by a negative effect on the returning ray. But for a moving observer, it was shown that the neutralization would not be quite complete; the apparent velocity of the ray going and coming in the line of the earth's motion would differ from the apparent velocity of the ray going and coming at right angles, in the ratio of the square of the velocity of the earth to the velocity of light, that is, by an amount equal to one part in (10,000)² or to one part in 100,000,000.

¹ Read before the National Academy of Sciences, Washington, April 28, 1925.

Marine Biological Laboratory Woods Hole, Mass.

INVESTIGATION

Entire Year

Facilities for research in Zoology, Embryology, Physiology, and Botany. Fifty-two private laboratories \$100 each and ninety-four private laboratories \$200 each for not over three months. Fifty-six tables are available for beginners in research who desire to work under the direction of members of the staff. The fee for such a table is \$50.00.

INSTRUCTION

June 30 to August
10, 1925

SUPPLY DEPARTMENT

Open the Entire
Year



Courses of laboratory instruction with lectures are offered in Invertebrate Zoology, Protozoology, Embryology, Physiology and Morphology and Taxonomy of the Algae. Each course requires the full time of the student. Fee, \$75.00.

Animals and plants, preserved, living, and in embryonic stages. Preserved material of all types of animals and of Algae, Fungi, Liverworts and Mosses furnished for classwork, or for the museum. Living material furnished in season as ordered. Microscopic slides in Zoology, Botany, Histology, Bacteriology. Catalogues of Zoological and Botanical material and Microscopic Slides sent on application. State which is desired. For catalogues and all information regarding material, address:

GEO. M. GRAY,

Curator, Woods Hole, Mass.

The annual announcement will be sent on application to The Director, Marine Biological Laboratory, Woods Hole, Mass.

Essays in Scientific Synthesis. By Eugenio Rignano. Translated by W. J. Greenstreet. Pages 254. Cloth, \$2.00.

"The author rightly holds that psychology cannot properly be understood without reference to physics and that sociology in turn depends upon psychology. . . . This volume is stimulating to thought in a wide variety of directions."—*New York Evening Post*.

Our Knowledge of the External World as a Field for Scientific Method in Philosophy. By the Hon. Bertrand Russell. New Edition. Pages x, 245. Cloth, \$2.00.

"In some respects the most important contribution that has been made to philosophy for a long time past. The whole book is of extreme interest, and it abounds in good sayings."—*The International Journal of Ethics*.

"This book, though intentionally somewhat popular in tone, contains some most important and interesting contributions to philosophy."—*Mind*.

The Contingency of the Laws of Nature. By Emile Boutroux of the French Academy. Translated by Fred Rothwell. With a Portrait of the Author. Pages x, 196. Cloth, \$1.50.

The two leading ideas of this work are, first, that philosophy should not confine itself to recombining eternally the concepts handed down by our forerunners, but rather should come into direct contact with the realities of nature and science; and, secondly, that philosophical systems, whether idealistic, materialistic, or dualistic, regard the laws of nature as necessary, and, consequently, that they are destructive of true life and freedom.

Send for complete catalogue of Books on Sciences, Philosophies and the History of Religion.

THE OPEN COURT PUBLISHING COMPANY

122 South Michigan Ave. Chicago, Illinois

ENTOMOLOGIST: Sc.D. Harvard. Five years Director Agricultural Research, Commercial Company; desires change. Eight years U. S. Dept. Agriculture; 8 years Head Dept. Zoology, Agricultural College and 9 years Entomologist State Experiment Station. Training Entomology and Genetics. Desires professorship in Zoology, College or University; teaching and research or Experiment Station position. Prefer Entomology or Genetics. Address: "E. G," care The Science Press, 3939 Grand Central Terminal Station, New York, N. Y.

ZOOLOGIST

M.S., with teaching experience, desires change of position. Address: "B. F.," care of Science, 3939 Grand Central Terminal, New York, N. Y.

STOP WATCHES



Ask for FREE pamphlet of the 16 different types of reliable "MEYLAN" stop watches.

Users of "MEYLAN" stop watches have a repair department always at their service in case of accident.

A. R. & J. E. MEYLAN
552 Seventh Ave.

New York, N. Y.

Fused Pure Silica
Vitreosil

Pyrometer Protection Tubes

Gas-tight; unbreakable with sudden temperature changes, unaffected by corrosion. Can be used continuously up to about 1000° C. and intermittently at much higher temperatures.

Transparent vitreosil tubes, while more expensive initially, give longer life under extremely severe conditions and will frequently be found more economical than cheaper materials in the long run.

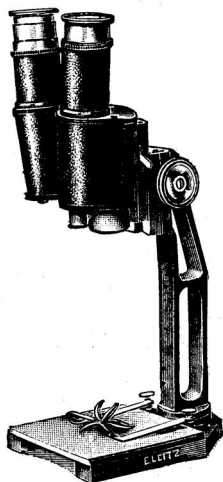
Vitreosil tubes are also useful accessories for radiation and optical pyrometer sets.

The Thermal Syndicate, Ltd.

62 Schenectady Avenue

Brooklyn, N. Y.

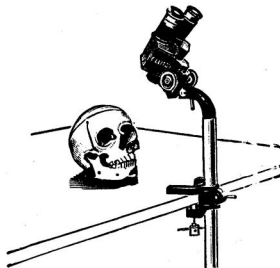




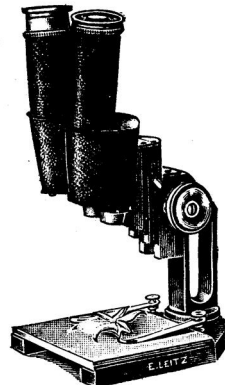
Model "BSM-B"



Model "BSM-D"



Model "BSM-F"



Model "BSM-C"

LEITZ

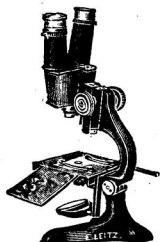
Binocular Stereo Microscopes

The Latest and Ideal Microscope for College Laboratories

Large Field

Stereoscopic Vision

Long Working Distance

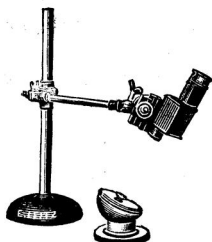


Model "BSM-M"

Impressed with the ever increasing importance of Binocular Vision applied to Microscopes, the Leitz Works have through constant contact with the Scientific Profession, been made to realize that through the development of microscopical instruments of comparatively low power, rendering stereoscopic images, possessing large working distance and large field of view, a long felt demand can be accommodated and furthermore the area of microscopical investigations be widened to an extent of which one had no conception.

With this in mind the Binocular Stereo Microscopes have been constructed and through the most favorable reception received, are destined to revolutionize Microscopy in College Laboratories.

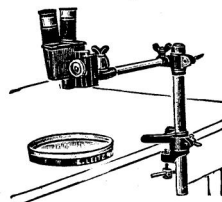
The Binocular Bodies—one for high, the other for low power—can be used interchangeably in connection with the various stands illustrated, and in offering such a variety of stands, any individual desire and need can be readily accommodated.



Model "BSM-I"



Model "BSM-E"



Model "BSM-H"



Model "BSM-L"

Write for Pamphlet No. (0) 1060.



60 EAST 10TH ST.
AGENTS:

Pacific Coast States: SPINDLER & SAUPPE, 86 Third St., San Francisco, Cal.

Canada: J. F. HARTZ CO., Ltd., Toronto, Canada.

Philippine Islands: BOTICA DE SANTA CRUZ, Manila, P. I.

Cuba: TEXIDOR CO., Ltd., Habana, Cuba.

The "Last Word" in Science Desks

From a letter from the head of the Science Department of a western college we take this paragraph relating to

Kewaunee Laboratory Furniture

"The furniture I believe is the last word in laboratory furnishings. It is substantial, serviceable, excellent in appearance and in every way highly satisfactory."

What more could one ask?

Because of our line of over five hundred standardized designs, it is seldom necessary to build special equipment, if you choose Kewaunee. You will find that we have already met nearly every possible laboratory need with a standard desk, table, bench or sink.

Write for a copy of the Kewaunee Book and ask for details of our Free Engineering Service. Address all inquiries to the factory at Kewaunee.

Kewaunee Mfg. Co.
LABORATORY FURNITURE EXPERTS

C. G. CAMPBELL, Treas. and Gen. Mgr.
115 Lincoln St. New York Office.
Kewaunee, Wis. 70 Fifth Avenue

Offices in Principal Cities

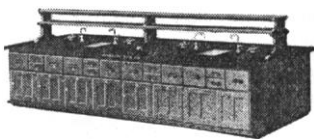


Physics
Laboratory Table
No. 700

Very popular with teachers. Very substantially built. Can be supplied, if desired, with lower cupboard and drawers.

Chemical **Desk No. 850**

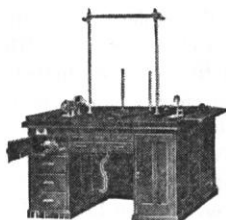
A good practical design at a moderate price that embodies all the essential features of the more elaborate desks.



Instructor's Desk

No. 1416

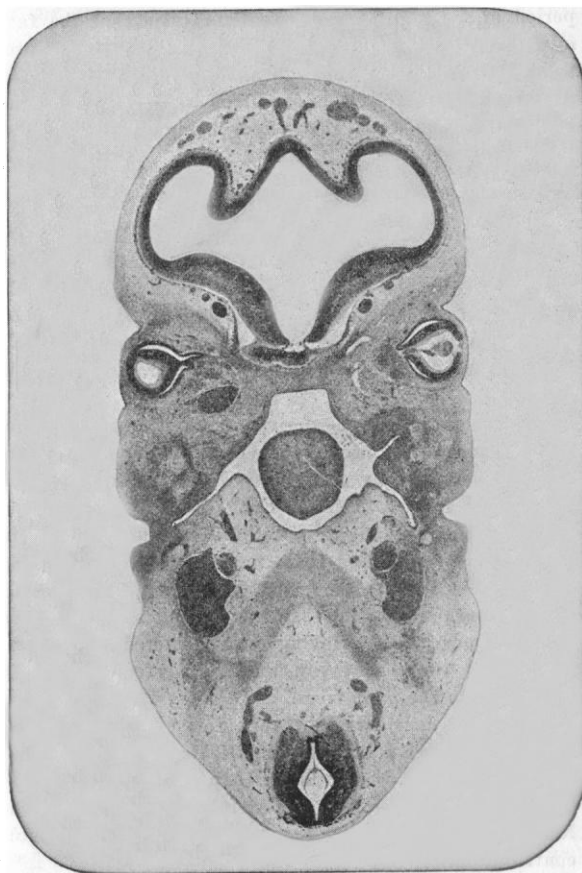
For Private Laboratory.



Produced in response to an insistent demand for an absolutely private work-table. Roll top cover completely encloses.

HUMAN EMBRYO PREPARATIONS

An illustrated leaflet describing these preparations will be sent to those requesting it.



T. s. thru head region x9

Slide preparations showing transverse sections from three body regions can be had at \$6.00 each. We are especially willing to ship on approval.

Western schools below the rank of college can secure these preparations, and many other of our products, thru any one of several Pacific coast general scientific supply houses.

Pacific Biological Laboratories

Pacific Grove

California