

SCIENCE

VOL. LVIII

DECEMBER 28, 1923

No. 1513

A RETROSPECT¹

CONTENTS

<i>The American Association for the Advancement of Science: A Retrospect:</i> PROFESSOR J. PLAYFAIR McMURRICH	521
<i>The Andes in Northern Peru:</i> PROFESSOR C. H. EIGENMANN	532
<i>Scientific Events:</i>	
<i>National Parks; National Research Fellowships in Physics, Chemistry and Mathematics; Dinner in honor of Dr. Bohr; The Engineers' Testimonial Dinner to Dean Cooley; The Medalists of the Royal Society</i>	532
<i>Scientific Notes and News</i>	535
<i>University and Educational Notes</i>	536
<i>Discussion and Correspondence:</i>	
<i>On the Model of the Helium Atom:</i> DR. RALPH DE LAER KRONIG. <i>Plant Lice and Light Exposure:</i> S. MARCOVITCH. <i>The Santa Barbara Skull:</i> E. H. SELLARDS	537
<i>Scientific Books:</i>	
<i>Birkhoff's Relativity and Modern Physics:</i> PROFESSOR L. P. EISENHART	539
<i>Special Articles:</i>	
<i>Some Effects of Insulin and Glucokin in on Maize Seedlings:</i> DR. M. M. ELLIS and W. H. EYSTER. <i>"Vitamin A" Deficiency in Poultry:</i> DR. J. R. BEACH	541
<i>Science News</i>	x

SCIENCE: A Weekly Journal devoted to the Advancement of Science, edited by J. McKeen Cattell and published every Friday by

THE SCIENCE PRESS

Lancaster, Pa.

Garrison, N. Y.

New York City: Grand Central Terminal.

Annual Subscription, \$6.00. Single Copies, 15 Cts.

SCIENCE is the official organ of the American Association for the Advancement of Science. Information regarding membership in the association may be secured from the office of the permanent secretary, in the Smithsonian Institution Building, Washington, D. C.

Entered as second-class matter July 18, 1923, at the Post Office at Lancaster, Pa., under the Act of March 3, 1879.

It is the custom of our association that the annual presidential address should be delivered, not by the actual president, who assumed the responsibilities and honors of his office at the close of the last meeting a year ago, but by his predecessor, who by courtesy is termed the "retiring president" although as a matter of fact he is not "retiring" but "retired." He has to the best of his ability sustained the responsibilities of the presidency and has been relieved of them, he has enjoyed the honor of the position and has retired beyond the range of the spot-light only to be dragged into it once more with even greater responsibilities than before. Professor Dana in his presidential address of nearly seventy years ago describes this situation more eloquently than I can. "In most offices," he said, "the duties terminate with the office, and the thing of the past, the ex-officer, is to the present an unknown quantity. But it is not so with your president. Science . . . sternly drags forward its reluctant presidents to their hardest trial when they have ceased to be, to a judgment after death severer than that of Rhadamanthus." And Professor Asa Gray nearly twenty years later naturally and happily employing a botanical metaphor, compared the president to a biennial plant: "He flourishes for the year in which he comes into existence and performs his appropriate functions as a presiding officer. When the second year comes round, he is expected to blossom out in an address and disappear."

This arrangement has its advantages in that it affords what should be ample time for the preparation of such an address as the occasion and the position demands; for a speaker from this rostrum is confronted with the responsibility of speaking as one having authority, as a representative of science and while he may not have the ability to duly mix "reason with pleasure and wisdom with wit," he may be expected to set forth with surety and clarity the faith that is in him as to the achievements and progress of science, or at least of that department of science which he cultivates. Few can see this responsibility approach with cool, calm composure and assurance and alas! the very fact that one has apparently ample time for the preparation of one's pronouncements

¹ Address of the president of the American Association for the Advancement of Science, Seventy-fifth Annual Meeting, Cincinnati, 1923.

Cornell University Medical College

First Avenue and Twenty-eighth St.
NEW YORK CITY



The first year of the course is also offered at Ithaca, N. Y., subsequent years at New York City only.

For information address
THE SECRETARY

BROOKLYN BOTANIC GARDEN MEMOIRS

Volume II, The Vegetation of Long Island, Part I, The Vegetation of Montauk: A Study of Grassland and Forest. By Norman Taylor.
Published June 11, 1923. 108 pages, 30 text figures.
Price \$1.00. Remittance should accompany orders.

AMERICAN JOURNAL OF BOTANY

Devoted to All Branches of Botanical Science
Established 1914. Monthly, except August and September. Official Publication of the Botanical Society of America.

Subscription, \$6 a year. Volumes 1-10 complete, \$72, post free. Single numbers, 75 cents, post free. Prices of odd volumes on request.

Foreign postage: To Canada, 20 cents; to other countries, 40 cents.

ECOLOGY

Devoted to All Forms of Life in Relation to Environment

Established 1920. Quarterly.
Official Publication of the Ecological Society of America. Subscription, \$4 a year. Back volumes I-IV, \$4.25 each, post free.

Single numbers, \$1.25 post free.
Foreign postage: To Canada, 10 cents; to other countries, 20 cents.

GENETICS

A Periodical Record of Investigation in Heredity and Variation

Established 1916. Bimonthly.
Subscription, \$6 a year. Single numbers, \$1.25 post free.

Foreign postage: To Canada, 25 cents; to other countries, 50 cents.

Orders should be placed direct with
The Secretary, Brooklyn Botanic Garden,
BROOKLYN, N. Y., U. S. A.

RUSH MEDICAL COLLEGE IN AFFILIATION WITH THE UNIVERSITY OF CHICAGO

Curriculum.—The fundamental branches (Anatomy, Physiology, Bacteriology, etc.) are taught in the Departments of Science at the Hull Biological and the Ricketts Laboratories, University of Chicago. The courses of the three clinical years are given in Rush Medical College and in the Presbyterian, the Cook County Hospital, the Home for Destitute Crippled Children, and other hospitals.

Requirements for Admission.—Three years of pre-medical college work.

Classes Limited.—The number of students admitted to each class is limited, selection of those to be admitted is made on the basis of merit in scholarship and other qualifications requisite for the study and practice of medicine.

Hospital Year.—The fifth year, consisting of service as an interne under supervision of the faculty in an approved hospital, or of advanced work in one of the departments is prerequisite for graduation.

Summer Quarter.—The college year is divided into four quarters, three of which constitute an annual session. The summer quarter in the climate of Chicago is advantageous for work. Students are admitted to begin the medical courses only in the Autumn and Spring quarters.

Elective System.—A considerable freedom of choice of courses and instructors is open to the student.

Graduate Courses.—Advanced and research courses are offered in all departments. Students by attending summer quarters and prolonging their residence at the University of Chicago in advanced work may secure the degree of A.M., S.M., or Ph.D. from the University.

Prize Scholarship.—Six prize scholarships—three in the first two years and three in the last two (clinical) years—are awarded to college graduates for theses embodying original research.

The Winter quarter commences January, 1924.

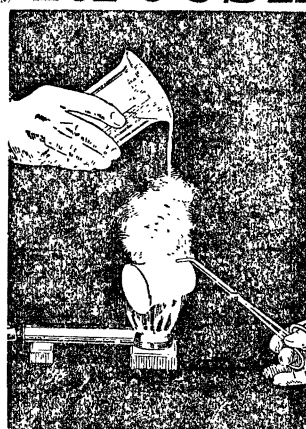
Tuition—\$80.00 per quarter, no laboratory fees.

Complete information may be secured by addressing:

THE MEDICAL DEAN

The University of Chicago Chicago, Illinois

Fused Pure Silica
Vitreosil



LABORATORY WARE and SCIENTIFIC APPARATUS

TRANSPARENT
NON-TRANSPARENT
COMPOSITE

CARRIED BY ALL DEALERS

The THERMAL SYNDICATE Ltd.

Borden Building 356 Madison Avenue
at 45th Street
New York, N.Y.



Perform acidemically and are sold with this guarantee.

A complete line of laboratory dyes.
Methylene Blue certified by Dr. Conn.
Wrights Stain of perfect performance.

Catalogue on request. Manufactured by

THE DYE STUFFS LABORATORY

1426 West 3rd Street

Cleveland, Ohio

FURFURAL AS A BIOLOGICAL REAGENT

FURFURAL is an excellent preservative for Biological Specimens.

FURFURAL can be more conveniently used as an injection fluid than the usual preparations.

FURFURAL has many other uses of importance to the Biologist. See "Furfural as a Biological Reagent", by Prof. C. E. Tharaldsen, *Science*, Vol. LVII, page 306, March 9, 1923.

A pamphlet on Furfural will be sent on request.

THE MINER LABORATORIES

9 SOUTH CLINTON ST.

CHICAGO

EXPERT MICROSCOPE REPAIRS

Have your Microscopes, Microtomes, Polariscope, etc., overhauled. Fully equipped and thoroughly experienced for all intricate work.

REICHERT'S AMERICAN OFFICE:

O. C. RUDOLPH

17 Madison Avenue

New York

Keep in Touch

with our latest research apparatus
by writing us to put you on our
mailing lists "Physical," "Chemical" and "Engineering."

ADAM HILGER Limited

75a CAMDEN ROAD

LONDON, N.W.1.

ENGLAND.

ELECTRICAL MEASURING INSTRUMENTS

FOR PHYSICISTS AND
PHYSICAL CHEMISTS

EQUIPMENTS SUITABLE FOR RESEARCH
AND INDUSTRIAL LABORATORIES

We Solicit Inquiries

LEEDS & NORTHRUP CO.

4901 STENTON AVENUE

PHILADELPHIA

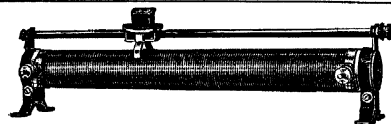
THE SCIENCE PRESS PRINTING COMPANY

PRINTERS OF
SCIENTIFIC AND EDUCATIONAL JOURNALS
MONOGRAPHS AND BOOKS

A. E. URBAN, *General Manager*

Correspondence Invited

LIME AND GREEN STREETS
LANCASTER, PENNSYLVANIA



By means of sliding-contacts the resistance value of

JAGABI RHEOSTATS

can be varied from zero to full rating in exceedingly small steps.

They are eminently suited for, and are largely used in Educational, Research and Industrial Laboratories.

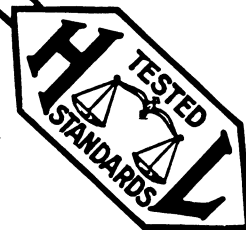
Write for Illustrated Bulletin S 980

JAMES G. BIDDLE, PHILADELPHIA
1211-13 ARCH STREET

THE PROTEIN CASEIN

of the

HIGHEST PURITY ATTAINED COMMERCIALY



High Nitrogen

Low Ash

Trace Calcium

CASEIN-HARRIS, free from Vitamines A & B, extensively purified by reprecipitation from a CLEAR, dilute soda solution, with acetic acid. Extracted with acetic acid, alcohol and ether. Vacuum dried, pulverized.

PHYSIOLOGICALLY STANDARDIZED BY THE WHITE RAT METHOD

Widely used by Universities, State Departments, Experiment Stations and Laboratories of the United States Government, as a highly nutritive protein, free from Vitamines A and B. Growth charts upon request.

AVERAGE ANALYSIS

Ask for full list of Essential food factors, Vitamine products, food mixes, wall chart, etc.

Moisture.....	10.73	Casein (N X 6.38)...	87.09
Ash59	Ether-soluble.....	.20
Calcium	trace	Nitrogen,	
Nitrogen.....	13.66	water, fat, ash-free.	15.44

(cf.—Osborne & Harris, Jr. Am. Chem. Soc., 25-IV. 346)

THE HARRIS LABORATORIES
TUCKAHOE, NEW YORK

FAULT MAP OF THE STATE OF CALIFORNIA

A map of the Earthquake Rifts of the State of California, scale 8 miles to 1 inch, with township subdivisions, relief shading, and submarine contours; size 6 by 7 feet, in four sheets. Prepared by the Seismological Society of America, under the direction of Bailey Willis and H. O. Wood, in cooperation with the Carnegie Institution of Washington, U. S. Geological Survey, U. S. Navy Department, U. S. Hydrographic Office, University of California, and Stanford University. 1922. Accompanied by a descriptive brochure. This map will be sent to all new members of the Seismological Society, who pay the dues for 1923, (\$3.00), before December 31, 1923, or is for sale, unmounted, for \$5.00. Write to Professor S. D. Townley, Secretary, Stanford University, California.

SEISMOLOGICAL
SOCIETY OF
AMERICA

