

# GUARANTY INVESTMENT COMPANY

CAPITAL \$250,000.

Hon. ALBERT H. HORTON (Chief Justice, Kansas Supreme Court), Topeka, Kan., Pres't.

## 7% Guaranteed Farm Mortgages 7%

The Company calls the special attention of Investors to the following points :

- I. All loans guaranteed and interest payable semi-annually at the Importers' & Traders' National Bank, New York.
- II. Unusual fulness of information, not only about the security itself, but about the general development of the section where the farm is located.
- III. An examination each year of the general business of the Company and the Mortgages themselves by a COMMITTEE OF INVESTORS sent for the purpose.
- IV. Many hundred Mortgages taken and NOT A SINGLE FORECLOSURE.
- V. Exhibitions in New York at frequent intervals, of Kansas and Nebraska Farm Products. The Exhibition at the American Institute in the fall of 1888, received the *HIGHEST AWARD* of superiority.
- VI. Monthly Bulletins giving full information about all Mortgages offered for sale.

*Address for Monthly Bulletin and Investors' Committee Report for 1888,*

HENRY A. RILEY, General Eastern Manager, 191 Broadway, N.Y.

## GEOLOGY AT A GLANCE.

### Ives Strata Map of part of the United States of America and Canada,

In which the Architecture of the Earth's Crust is Graphically Exhibited, Illustrating Fundamental Facts alike of

#### STRUCTURAL GEOLOGY AND PHYSICAL GEOGRAPHY.

The Strata Map is a device for the more efficient teaching of Physical Geography and Elementary Geology in Schools. It consists of a series of Ten Superimposed Maps, of DIFFERENT COLORS, representing the several geological formations of the district, enclosed in a glazed frame, the whole hinged to ad-

mit of examination in detail. By its means *superposition, denudation, and outcrop* of strata are graphically exhibited, with the phenomena of *escarpments, outliers, inliers, dip, strike, conformability, &c.*, and the Cards may be bent to show *synclinal or anticlinal* folds.

#### OPINIONS OF EMINENT GEOLOGISTS.

Yale University. Professor James D. Dana.  
"Well fitted for the use of instruction in the science."

Professor Addison E. Virrill.  
"It will be of very great advantage in the teaching of geology."

Harvard University. Professor N. S. Shaler.  
"An extremely useful adjunct to our means of illustration."

Johns Hopkins University. President D. C. Gilman.  
"Wherever American geology is taught your map should be a part of the apparatus."

Pennsylvania University. Professor Geo. A. Koenig.  
"The map will be of special use in schools, which can only devote a short time to the study of Geology."

Michigan University. Professor Alexander Winchell.  
"It seems to me that the device will commend the study of Geology to many persons who might otherwise regard the subject as difficult and uninviting. The work prepared by Mr. Ives ought to be used extensively in American schools."

Cornell University. Professor H. Shaler Williams.  
"A valuable aid to teachers of geology as a means of graphically representing the grand facts of stratigraphy in the Eastern United States."

Columbia College, New York. Professor J. S. Newberry.  
"A valuable aid in teaching geology, giving as it does to the student a clear idea of the superposition of the different geological systems at a glance."

Dartmouth College, Hanover, N. H. Professor C. H. Hitchcock.  
"Am satisfied that its use will greatly assist students to understand the geological structure of the country."

Academy of Natural Sciences of Philadelphia.

"The representation of Strata, as imposed one upon the other, by means of cardboard is certainly a good plan, for apart from rendering more intelligible the general expressions of the Map, it permits of ready alteration and the possibility of constantly bringing the map up to date, in other words to make it conform to more recent discoveries."

Boston Society of Natural History.

Professor Alpheus Hyatt.  
"Your map representing superposition and the various phenomena of geological science, so far as the distribution of rocks on this continent is concerned, has greatly interested me. I think that in the hands of a good teacher it would prove an efficient and useful adjunct in the teaching of geology."

American Museum of Natural History.

Professor R. P. Whitfield.  
"In the direction of a want long felt by Teachers of Geology and will undoubtedly be appreciated by them as well as by the student."

U. S. Geological Survey.

Major J. W. Powell, Director  
"After examination I am able to state that the work has been executed with care and fidelity, and I believe it will be a valuable aid to teachers."

New York State Survey.

Professor James Hall, State Geologist  
"I believe that maps constructed upon this method would be extremely useful in the hands of competent teachers."

Pennsylvania Survey.

Professor J. P. Lesley, State Geologist.  
"A piece of new and useful apparatus for teaching Geology, by representing to the eye of the student the areas of superimposed formations. I cordially recommend it to teachers and students."

New Jersey Survey.

Professor Geo. H. Cook, State Geologist.  
"It is very neatly done and must prove a great help to intelligent teaching and studying of Geological Science."

SIZE 30x24 INCHES. PRICE \$17.50.

PUBLISHED AT THE OFFICE OF "SCIENCE," 47 LAFAYETTE PLACE, NEW YORK, N. Y.



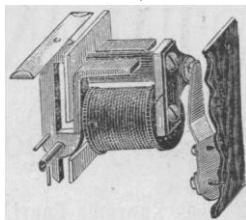
**Dry Goods Openings**

are now all the style. Small dealers make a great ado about the opening and display of each season's novelties. It belongs to the metropolis of the nation and to the great business houses on its broad streets to have a continuous series of openings the year round. Of the limited number of truly great dry goods establishments in New York, Messrs. James McCreery & Co., in the matter of original exhibits combining novelty, originality, and exclusive design, lead all the rest. This enterprising firm have a well earned reputation for integrity in their business dealings, remarkable quality in the goods offered for sale, and moderation in price. Their constantly recurring advertisements in this paper are truthfully written and their representations can be depended upon.

*Schools.*

CONNECTICUT, NEW HAVEN,  
**MRS. CADY'S SCHOOL FOR YOUNG LADIES.**  
Prepares for Smith and Wellesley, and admits to Vassar by Certificate. Circulars. Early application necessary.

NEW JERSEY, PLAINFIELD.  
**THE CHESTNUTS.**—Parents with daughters to educate, or orphan girls with companion, may find a comfortable home, with school instruction by applying to Miss E. E. Kenyon.



A  
★  
DROP  
IN THE  
PRICE  
★  
OF

**GRAVITY  
DROP  
ANNUNCIATORS.**

**DON'T FORGET THE  
DUST-PROOF BELLS.**

**HAZAZER & STANLEY,  
32 Frankfort Street, N. Y.**

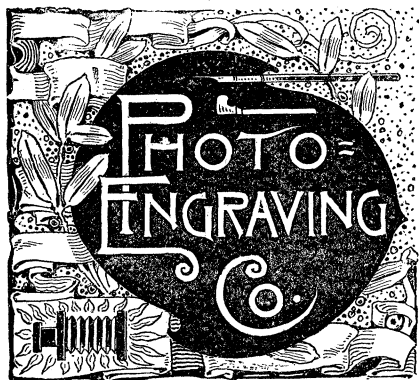
Any one who will have the following blank filled out by a responsible Newsdealer, and mailed to us, will be allowed a three months' subscription to *Science*.

**N. D. C. HODGES,  
47 LAFAYETTE PLACE, NEW YORK.**

1889.

To the ..... *News Company.*

*You may add to my regular order five copies of SCIENCE  
each week (returnable).*



BRANCH AT 728 CHESTNUT ST.  
PHILADELPHIA, PA.

JOHN HASTINGS = A=R=MART = JOS=TRIPP.  
Pres't. Gen-Manager. V-Pres't.

**ENGRAVING FOR  
ALL ILLUSTRATIVE  
AND ADVERTISING  
PURPOSES**

**67-71 PARK PLACE  
NEW YORK.**



**GOOD NEWS  
TO LADIES.**

Greatest inducements ever offered. Now's your time to get up orders for our celebrated **Teas and Coffees**, and secure a beautiful Gold Band or Moss Rose China Tea Set, Dinner Set, Gold Band Moss Rose Toilet Set, Watch, Brass Lamp, or Webster's Dictionary. For full particulars address **THE GREAT AMERICAN TEA CO.,** P. O. Box 328, 31 and 33 Vesey St., New York.

**16 PAGES. THREE 16 PAGES.**

Hundred Thousand new subscribers for *The Family Journal and Ladies' Companion* wanted. It is the most interesting and instructive paper ever issued. Subscribers will receive during the coming twelve

**MONTHS**

novels written by American Authors, complete in each three numbers. The story of popular works of fiction will be retold by a novel reader, the most interesting and unique feature ever introduced in any publication, giving the substance of popular and standard books by famous writers in a space easily read by the busiest people. We have engaged

**FOR**

this work a widely known and popular writer. Comments on Current Events, Fashions, New and Original Ideas and Designs for Ladies' Fancy Work and Household Decoration, Letters from Correspondents and their Answers. The colleges and seminaries of the United States will be treated one each month in an illustrated article, showing the particular advantage of each, cost of attendance, etc. Invaluable to parents having sons or daughters whom they desire should receive the advantages of a higher education than the ordinary school affords. Articles on Painting and Drawing, giving home instruction by a well-known artist. A trial subscription of this elegant paper will be sent to any address, three months for

**TEN CENTS.**

Liberal pay for literary work adapted to our columns, and for new and original drawings, designs and ideas on any subject which we can use.

Premium List the most complete in the world. We offer inducements to club raisers and agents approached by no other publishing house. The celebrated Gilbert Cut Waist Linings, which we send post paid to any one sending us two yearly subscribers at 50 cents each is alone worth 75 cents.

12 Sent to any address, post paid one year, 50 cents; six months, 25 cents, and a three months' trial subscription for only 10 cents.

**TRY IT! TRY IT! TRY IT!**

and you will become a permanent reader. Address:

**John L. Douglass, Publisher,  
322 Broadway, N. Y.**

**SPECIAL  
Importation Sale**

The following unusual value in short ends and Special purchases are worthy of your attention

\$50 Suits	AT \$35
\$45 Suits	
\$42 Suits	
\$40 Suits	
\$14 Trousers	AT \$7
\$12 Trousers	
\$10 Trousers	
\$9 Trousers	

People who appreciate FINE Clothing at unusual moneys worth will please notice the above.

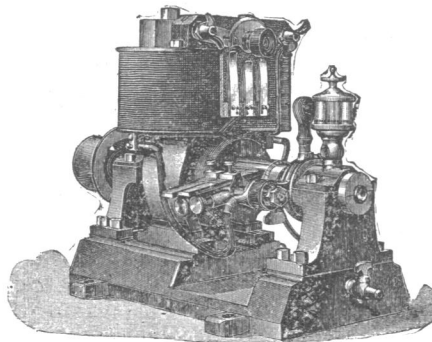
**E. O. THOMPSON,**  
*Fine Merchant Tailoring,*  
**245 BROADWAY.**

Extract of Letter from Merchant Tailor:

"I am informed that your knowledge of cutting is far ahead of all others—could kind words and a compensation induce you to teach me your system?"

# C. & C. ELECTRIC MOTOR COMPANY.

Electric Motors  
FOR  
Arc and Incandescent Circuits, Most Economical Motor on the Market.  
Regulation Perfect.  
Motors Designed for all Power Purposes.



OFFICE and MANUFACTORY:  
402 and 404 Greenwich Street, New York City.

New England Office, 19 Pearl St., Boston.

Philadelphia Office, 301 Arch St.

Western Office, 139-141 Adams Street Chicago.

Southern Office, 25 Carondelet Street, New Orleans.

## THE American Bell Telephone COMPANY. 95 MILK ST., BOSTON, MASS.

This Company owns the Letters Patent granted to Alexander Graham Bell, March 7th, 1876, No. 174,465, and January 30, 1877, No. 186,787.

The Transmission of Speech by all known forms of ELECTRIC SPEAKING TELEPHONES infringes the right secured to this Company by the above patents, and renders each individual user of telephones, not furnished by it or its licensees, responsible for such unlawful use, and all the consequences thereof and liable to suit therefor.

## ESTERBROOK'S STEEL PENS.

OF SUPERIOR AND STANDARD QUALITY.

Leading Nos.: 048, 14, 130, 135, 239, 333  
For Sale by all Stationers.

THE ESTERBROOK STEEL PEN CO.,

Works: Camden, N. J. 26 John St., New York.

*Old and Rare Books.*

A. S. CLARK, Bookseller,  
34 PARK ROW, NEW YORK CITY.

A Gleaner in the By-ways of Literature. Results of Gleaning found in Catalogues issued from time to time.

CATALOGUE NO. 27 NOW READY.

BACK NUMBERS and complete sets of leading Magazines. Rates low. AM. MAG. EXCHANGE, Schoharie, N.Y.

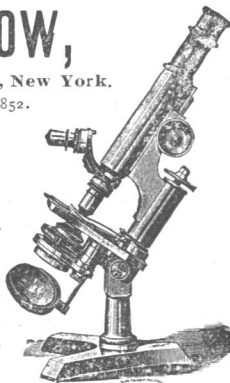
H. WILLIAMS,  
Dealer in Old Magazines, Reviews, &c. Scientific periodicals a specialty. 39 Macdougall St., N.Y.

### Scientific Apparatus.

J. GRUNOW,  
621 Sixth Avenue, New York.  
Established 1852.

MAKER OF

Microscope Stands, Oil Immersion Objectives and Abbe Condensers for Bacterial and Histological work, of Objectives, Camera Lucida and other accessory apparatus.



### IMPROVED OIL LIGHT MAGIC LANTERNS.

Also Lime and Electric Light Apparatus, and mechanical, plain, and fine colored views.

J. B. COLT & CO., Manufacturers,  
No. 16 BECKMAN STREET, NEW YORK.

MAGIC LANTERNS Stereopticons and the Best Views for Public, Church, Home, and Scientific Exhibitions. Best apparatus, new views. Largest stock. Reduced prices. 24 Years' Practical Experience. Illus. Catalogue Free.

GEO. H. PIERCE,  
136 S. Eleventh St., Philadelphia, Pa

### ELECTRICAL TESTING BUREAU,

Johns Hopkins University, Baltimore, Md.

Resistance Coils and Boxes Compared.  
Am meters and Volt meters calibrated.  
Condensers standardized.  
Primary and Secondary Batteries Tested.  
Efficiency of Dynamos and Motors Determined.  
Insulation of Cables and Wires Tested.  
Etc., Etc.  
Circulars describing Methods Used, Prices, Etc., sent on Application.  
Address as above.

MORRIS EARLE & CO.  
SUCCESSORS TO

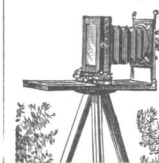
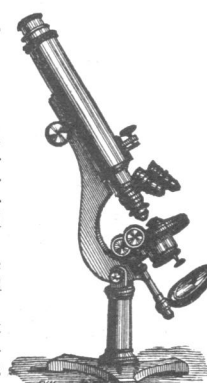
R. & J. BECK,

1016 Chestnut Street Phila

Microscopes and all Accessories and Apparatus. Photographic and Photo-Micrographic Apparatus and Outfits.

Spectacles, Eye Glasses, Opera and Marine Glasses, etc.

Illustrated Price List mailed free to any address. Mention SCIENCE in corresponding with us.



E. & H. T. ANTHONY & CO.  
591 Broadway, N.Y.

Manufacturers and Importers of PHOTOGRAPHIC INSTRUMENTS, Apparatus and Supplies of every description. Sole proprietors of the Patent Detective, Fairy, Novel, and Bicycle Cameras, and the Celebrated Stanley Dry Plates.

Amateur Outfits in great variety, from \$9.00 upward. Send for Catalogue or call and examine. More than 40 years established in this line of business.

### A BOOK FOR THE TIMES!

NEW EDITIONS!

Laidlaw's Constitution of the United States and the Declaration of Independence, in English, French, and German, with notes. Sold by all booksellers, or by the publishers, LAIDLAW BROS. AND CO., 137 W. 41st St., New York.

Second and Revised Edition, in cloth - - - - - 50c. postpaid.

Third Edition, in paper - - - - - 25c. postpaid.

## R. ELLIS & CO.

BUSINESS, HOTEL AND PATENT BROKERS,

AUCTIONEERS, ETC.

No. 176 BROADWAY,

Room 46.

New York.

CLIENTS Advised free of charge.

# The Mutual Life Insurance Company

OF NEW YORK.

RICHARD A. McCURDY, PRESIDENT.

**ASSETS - - - \$126,082,153 56**

The Largest and best Life Insurance Company in the World.

The New Business of the Mutual Life Insurance Company in 1888

Exceeded \$103,000,000.

Its Business shows the Greatest Comparative Gain made by any Company during the past year including

A gain in assets of .....	\$ 7,275,301 68
A gain in income of .....	3,096,010 06
A gain in new premiums of .....	2,333,406 00
A gain in surplus of .....	1,645,622 11
A gain in new business of .....	33,756,792 85
A gain of risks in force .....	54,496,251 85

## The Mutual Life Insurance Company

Has Paid to Policy-holders since Organization \$272,481,839 82.

## Arnold, Constable & Co. SPRING STYLES DRESS FABRICS.

Plain and Hair-Line Batiste Cloths,  
Printed Laines, Fancy Mohairs,  
Cheviots, Tweeds,  
for Steamer and Travelling Dress.  
Checked and Striped Suitings,  
Broche and Embroidered Robes,  
Cashmeres d'Ecosse, Henrietta Cloths,  
IN NEW COLORINGS.  
FOR STREET AND EVENING WEAR

Broadway & 19th st.  
New York.

## IMPROVING THE MEMORY PICK

and facilitating the acquirement of knowledge by lectures and correspondence. Classes forming. "MEMORY and its Doctors," from Simonides to "Loisette," mailed for 10 cents.  
DR. PICK, 24 Union Square, N. Y. City.

## FOOD ADULTERATION

And its Detection. With photomicrographic plates and a bibliographical appendix. By J. P. Battershall. 328 pages, 8vo, cloth. Price, \$3.50. Circulars and Catalogues on application. E. & F. N. SPON,  
12 Cortlandt St., New York.

### PATENTS.

During April and May my fees due only on allowance if desired. Write

WM. H. BABCOCK,  
513 Seventh St., Washington, D.C., P. O. Box 220.  
Formerly Examiner in Patent Office.  
THIRTEEN YEARS' PRACTICE.

## A SEASONABLE FABRIC.

This refers to a Wash Silk, one that can be washed without the least injury to the fabric, either in appearance or color.

The lack of just such a material has long been felt, and its introduction will undoubtedly be received with satisfaction.

Wash silks are light in texture, tasteful in design and coloring, and very durable, being thus eminently adapted for Spring and Summer Wear.

We are showing exclusive styles.

## JAMES MCCREERY & CO.

BROADWAY AND ELEVENTH STREET,  
NEW YORK.



## KIMBALL'S STRAIGHT CUT CIGARETTES.

Unsurpassed in quality.  
Used by people of refined taste.  
Highest award at Brussels, 1888.  
The finest smoking mixtures are of our manufacture.  
Fifteen First Prize Medals.  
WM. S. KIMBALL & CO.  
Rochester, N.Y.

ESTABLISHED 1859.

## H. A. DREW,

Commercial Printer,  
5 Clinton Place, near Broadway,  
New York.

Wedding Orders, Souvenirs, Invitations, Orders of Dance, etc., etc., done in the latest and most elaborate styles, at reasonable prices.

All Favors promptly attended to.

## THE CHEQUE BANK LIMITED.

ESTABLISHED IN LONDON, 1873.

CHIEF OFFICE, 4 Waterloo Place, Pall Mall, London.

### TRUSTEES:

The Right Honorable JOHN BRIGHT, M.P.  
The Right Honorable EARL BEAUCHAMP.  
Bankers: Bank of England.

The Capital of the Bank and its Guarantee Fund of 50% is invested in Government Securities.

The Bank does not discount Notes or Bills, nor speculate, but loans its Deposits against Government Securities, thus making the Cheque Bank Cheques EQUAL TO CASH—as Bank of England Notes are.

The Cheque Bank issues Cheques singly or in books from ONE POUND upwards, for the use of Travelers, and for others remitting money to Europe, available in every town in England, Scotland, Ireland, and Wales. In every town of Europe, and all other parts of the world.

Cheque Bank Cheques are accepted as Cash by all the British Government Offices.

VISITORS TO THE PARIS EXHIBITION this summer can get the Cheque Bank Cheques cashed at 50 Banking Houses in Paris.

Travelers and others holding Cheque Bank Cheques can have their mail matter addressed to them, care of the Cheque Bank, London, who will take charge of the same and forward to any address.

For Hand-Book containing List of upwards of 2000 of the principal Banking Houses throughout the World who Cash the Cheque Bank Cheques, and for all information, apply to the AGENCY,

### CHEQUE BANK, Limited,

UNITED BANK BUILDING,  
2 Wall St., New York.

E. J. Mathews & Co., Agents.

### REFERENCES BY PERMISSION:

JNO. W. MACKAY, Esq., President Commercial Cable Company, Mackay-Bennett Cables, New York.

F. O. FRENCH, Esq., President Manhattan Trust Co., New York, and others.

## KNABE

PIANOFORTES.

UNEQUALLED IN

Tone, Touch, Workmanship and Durability.

WILLIAM KNABE & CO.

NEW YORK: No. 112 Fifth Av., above 16th St.

BALTIMORE: Nos. 22 and 24 E. Baltimore St.

WASHINGTON: No. 817 Market Space, Penn. Av., near 9th St.

### WHY YOU SHOULD USE

## Scott's Emulsion

OF Cod Liver Oil WITH  
HYPOPHOSPHITES.

It is used and endorsed by Physicians because it is the best.

It is Palatable as Milk.

It is three times as efficacious as plain Cod Liver Oil.

It is far superior to all other so-called Emulsions.

It is a perfect Emulsion, does not separate or change.

It is wonderful as a flesh producer.

It is the best remedy for Consumption, Scrofula, Bronchitis, Wasting Diseases, Chronic Coughs and Colds.

Sold by all Druggists.

SCOTT & BOWNE, Chemists, N.Y.