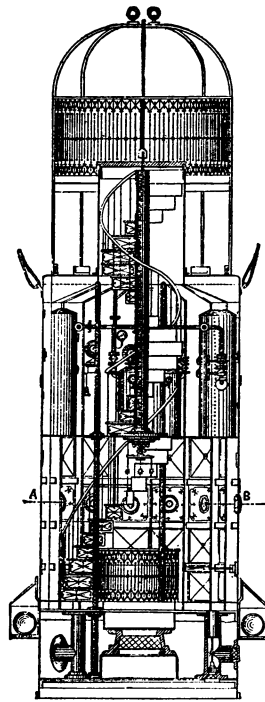
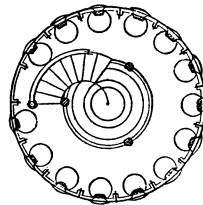


A PROPOSED DIVING-CHAMBER SUPPLIED WITH COMPRESSED AIR TO BE USED IN SUBMARINE EXPLORATIONS.—*La Nature*.



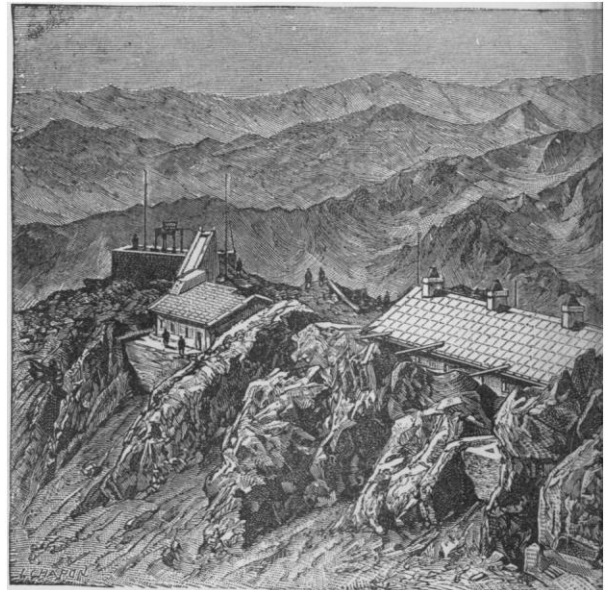
Section through A B.



A PIECE OF ANCIENT PERUVI  
*La Nature*.

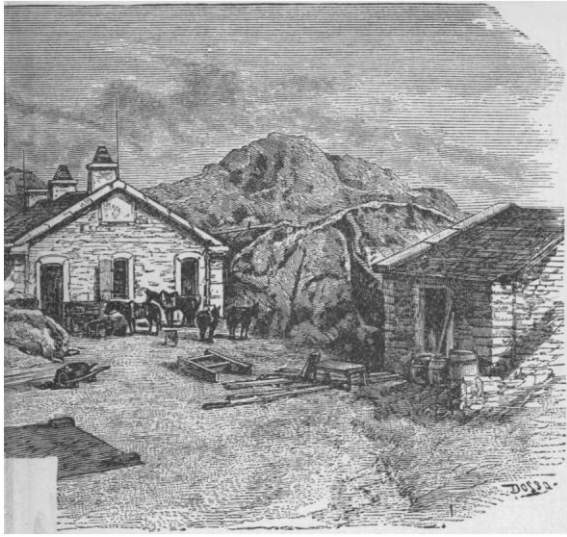


THE LEAF-BUTTERFLY. FLYING AND ALIGHTED.—*Science monthly*.



METEOROLOGICAL AND CHEMICAL LABORATORY ON PIC DU MIDI FOR  
ATMOSPHERIC PHENOMENA.—*Science et nature*.

SELECTED ILLUSTRATIONS FROM



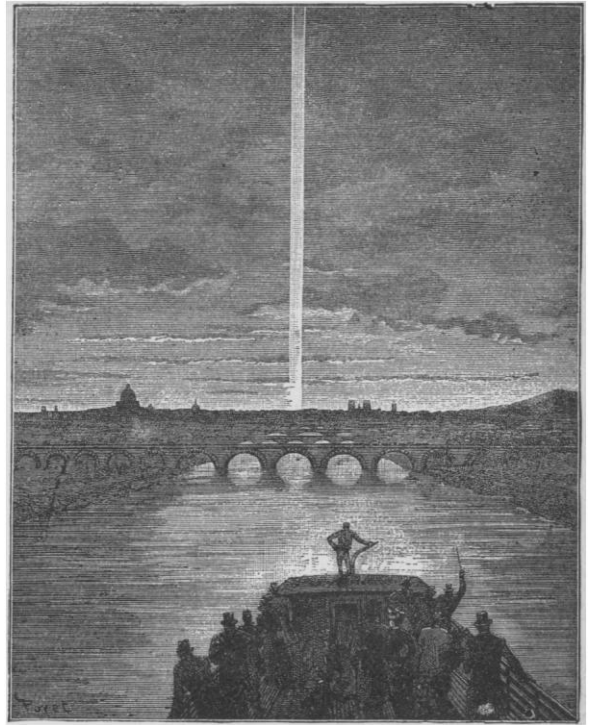
METEOROLOGICAL AND CHEMICAL LABORATORY ON PIC DU MIDI FOR THE STUDY OF ATMOSPHERIC PHENOMENA. THE SPECIAL LABORATORY OF MÜNTZ AND AUBIN FOR THE INVESTIGATION OF THE CHEMISTRY OF THE AIR. — *Science et nature*.



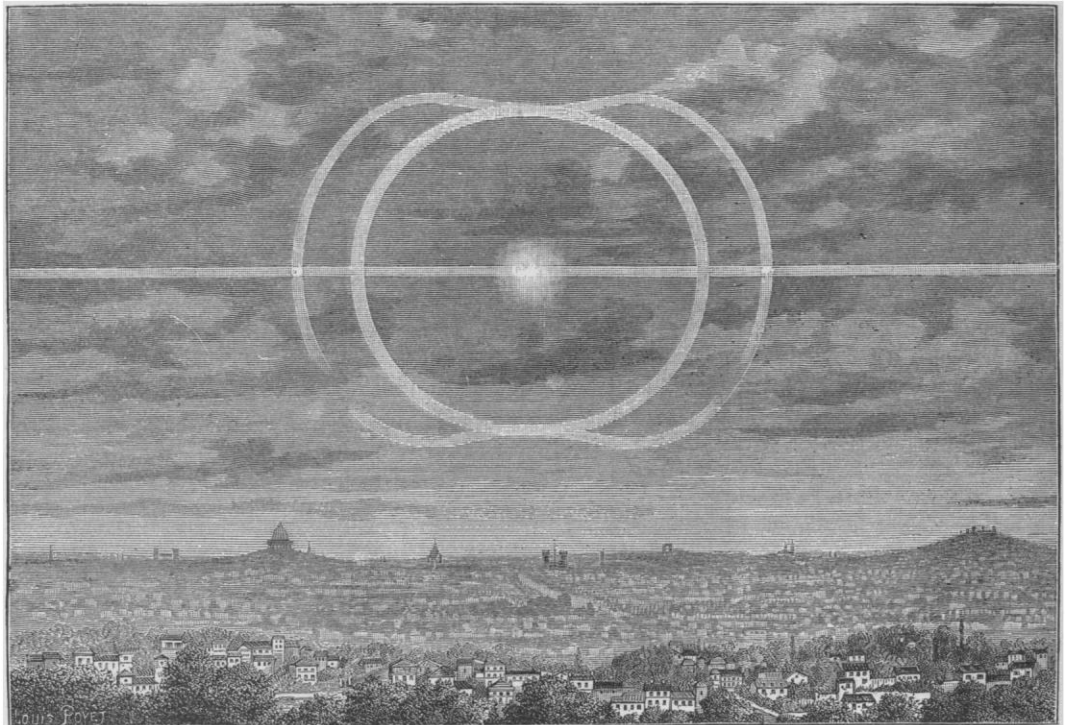
AN POTTERY. —



THE STUDY OF



VERTICAL RAY SEEN FROM PARIS. MARCH 20, JUST AFTER SUNSET. — *L'Illustration*.



HALO SEEN FROM THE OBSERVATORY OF THE PARC DE SAINT-MARC, MARCH 25, AT 11 A.M. — *L'Illustration*.