

The AB763 circuit can be any of these models

Deluxe Reverb  
Vibrolux Reverb  
Bandmaster Reverb  
Pro Reverb  
Super Reverb  
Vibroverb  
Twin Reverb  
Dual Showman Reverb

Click on the links below for build information

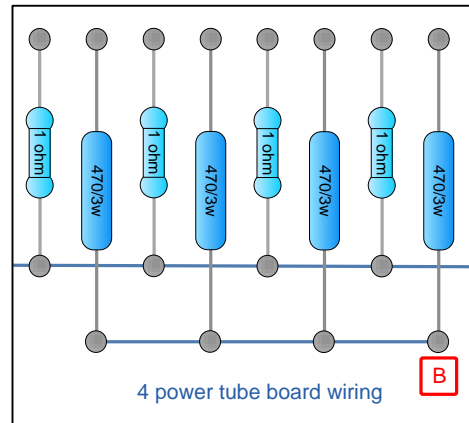
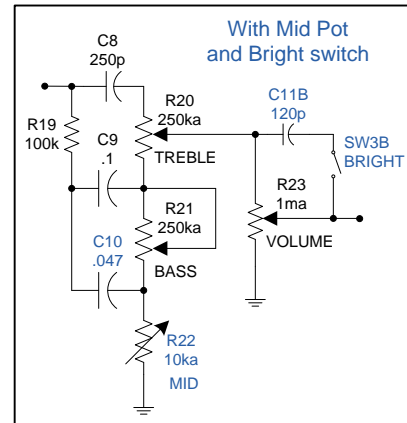
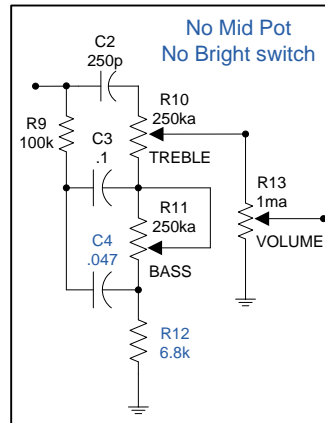
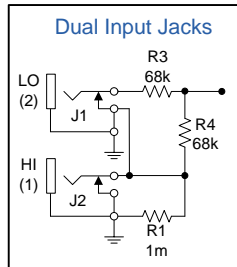
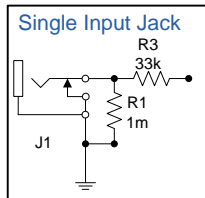
[Link - Common Hookup Info](#)

[Link - Hoffman AB763 circuit Info](#)

[Link - Hoffman Board Install Instructions](#)

[Link - Hoffman AB763 Bill of Materials - BOM](#)

Parts in Blue vary on different models,  
See the BOM for details on each model



The only difference on a 4 power tube board is that it has 4 x 470 ohm screen grid resistors and 4 x 1 ohm cathode bias resistors.

On 4 power tube models, the Plate wires from the Output Transformer are wired like this  
V7 and V8 pin 3's are jumpered together  
V9 and V10 pin 3's are jumpered together

The other pins are wired to the board parts just like they are shown in the 2 power tube wiring diagrams

AB763 short board notes:

The AB763 short board has these items removed from the main board.

Two 100 ohm artificial Center Tap resistors

The Bias supply

I sell a AB763 Bias board on the turret board page

That board has the bias and the 100 ohm resistors

The screen grid resistors

The one ohm cathode resistors

Mount these items on the power tube sockets

Point A does not have a lug on the board.

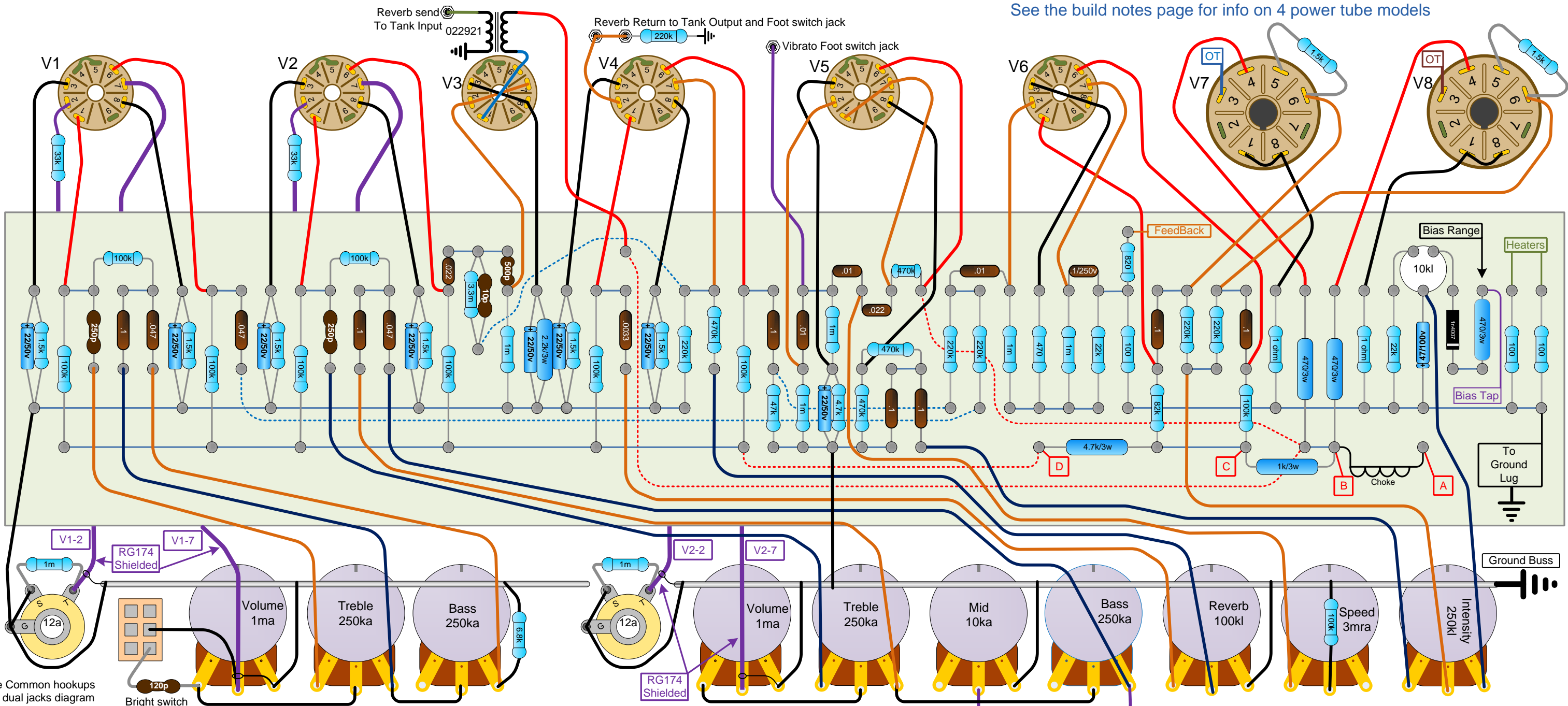
See the power supply page for point A

The intensity pot is not part of the bias board kit

The Intensity pot is part of the AB763 kits



See the [build notes page](#) for info on 4 power tube models

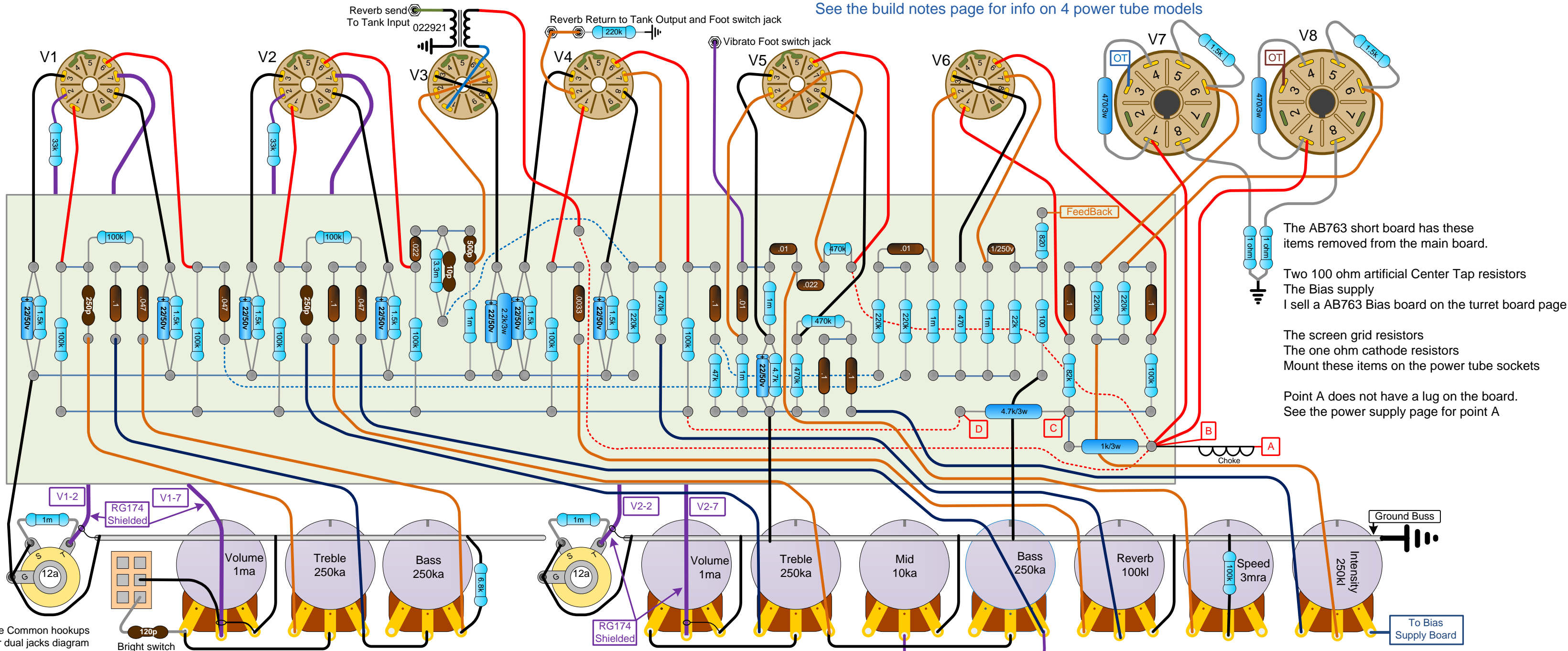


## Bright switch and Mid Pot layout

See Common hookups  
for dual jacks diagram

## Hoffman Amplifiers AB763 - 2 Channel

3.125" x 15.63"  
www.hoffmanamps.com



See Common hookups for dual jacks diagram

Bright switch

Bright switch and Mid Pot layout

See Common hookups for dual jacks diagram

Mid Pot

Hoffman Amplifiers AB763 - 2 Channel Short Board

## Clickable Links

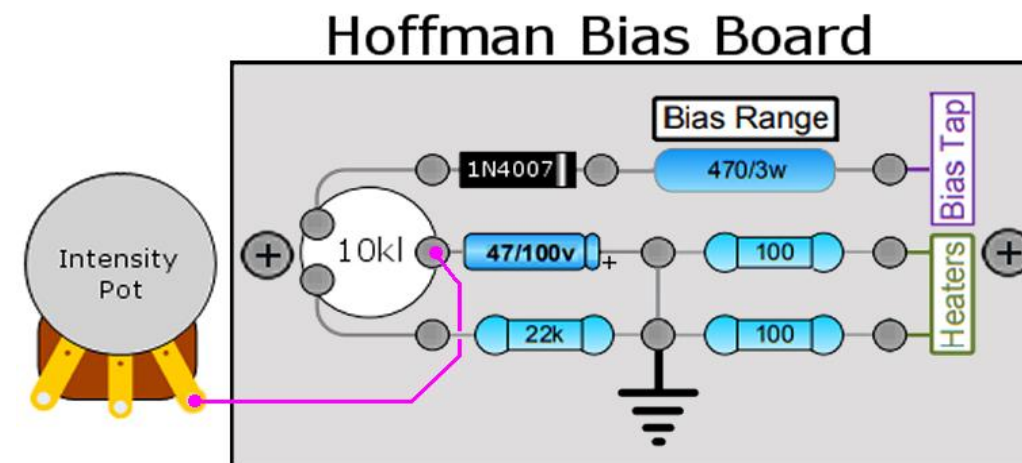
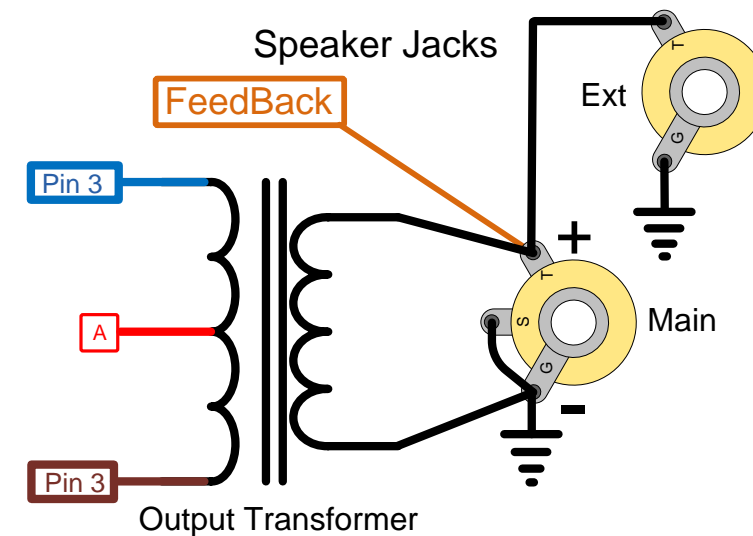
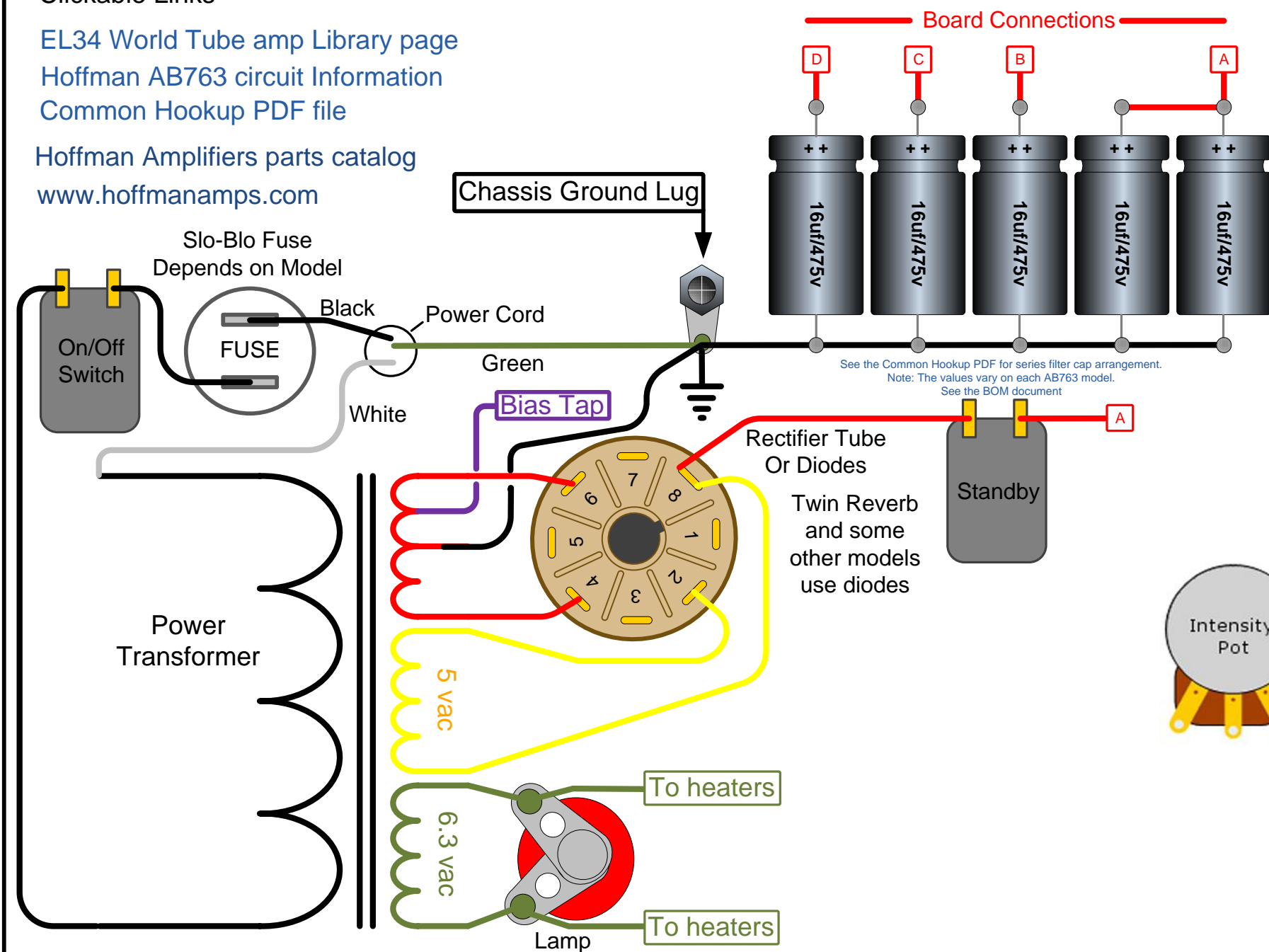
[EL34 World Tube amp Library page](#)

[Hoffman AB763 circuit Information](#)

[Common Hookup PDF file](#)

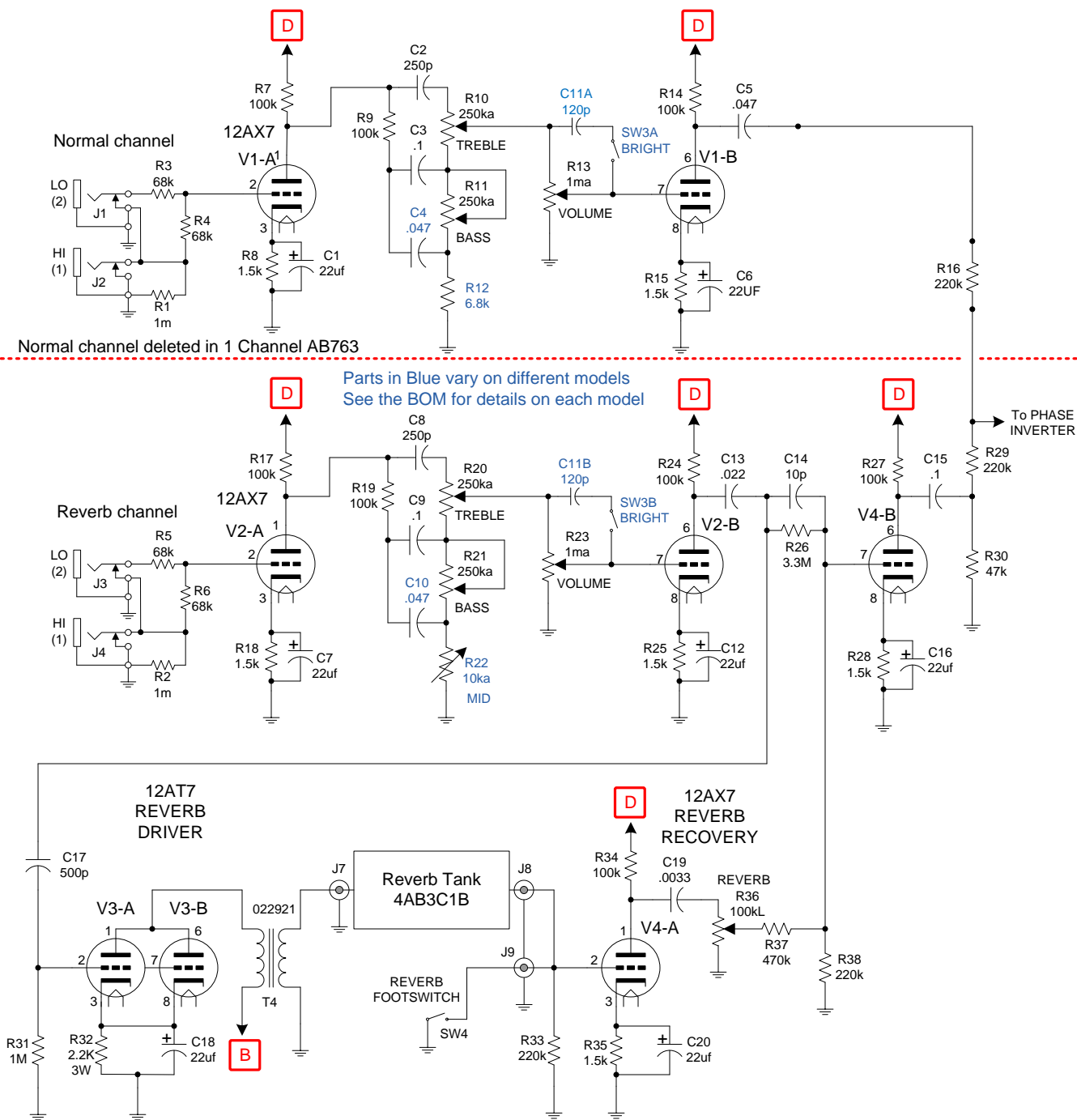
[Hoffman Amplifiers parts catalog](#)

[www.hoffmanamps.com](http://www.hoffmanamps.com)



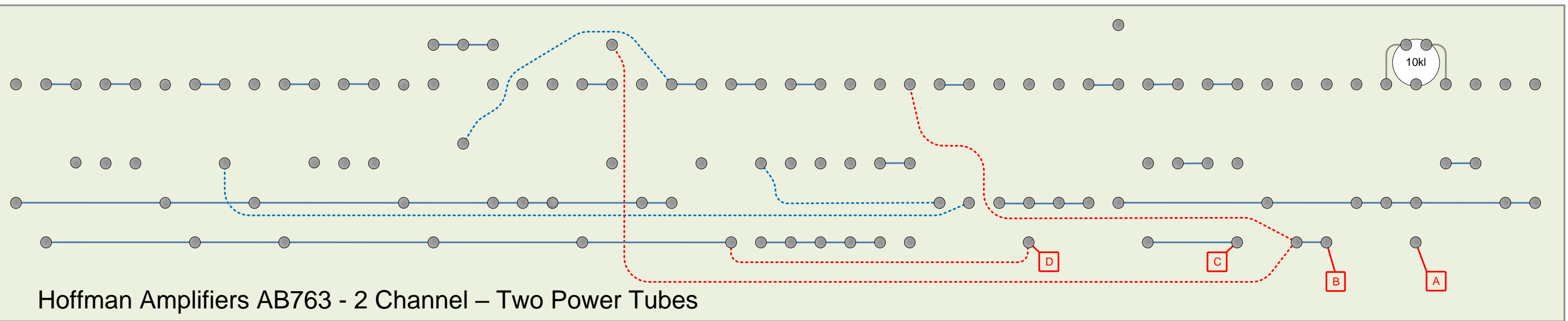
Use this bias board if you are using the AB763 Short Board  
The bias supply is included on the other AB763 boards

See the build notes page for info on 4 power tube models  
And info on the AB763 Short Board

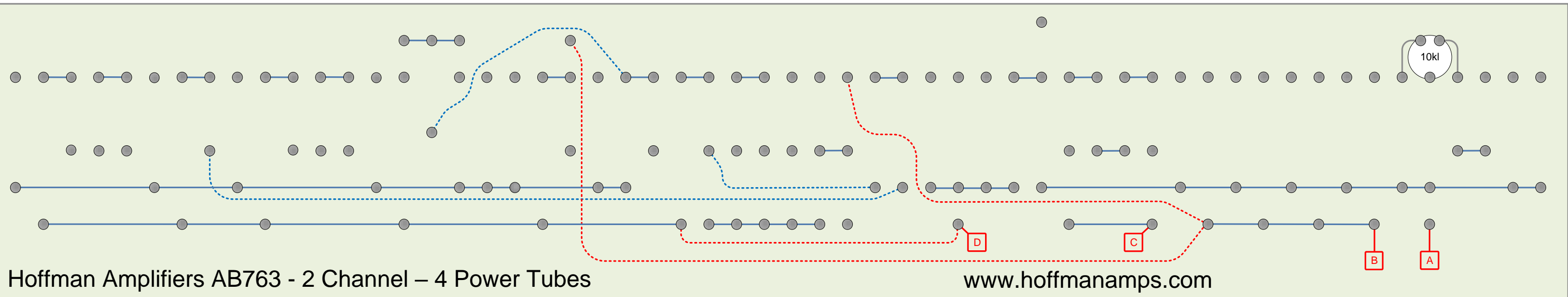




Hoffman Amplifiers AB763 - 2 Channel – Two Power Tubes

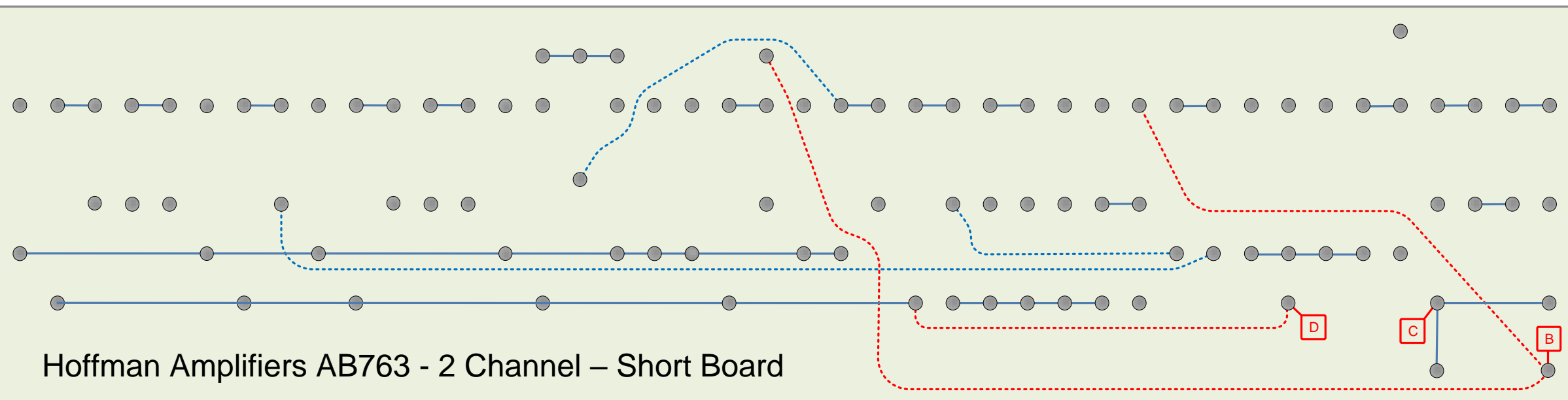


Hoffman Amplifiers AB763 - 2 Channel – 4 Power Tubes



[www.hoffmanamps.com](http://www.hoffmanamps.com)

Hoffman Amplifiers AB763 - 2 Channel – Short Board



The AB763 short board has these items removed

Two 100 ohm artificial Center Tap resistors  
The Bias supply  
I sell a AB763 Bias board on the turret board page

The screen grid resistors  
The one ohm cathode resistors  
Mount these items on the power tube sockets

See the build notes page for more info

**A** Point A does not have a lug on the board.  
See the power supply page for point A