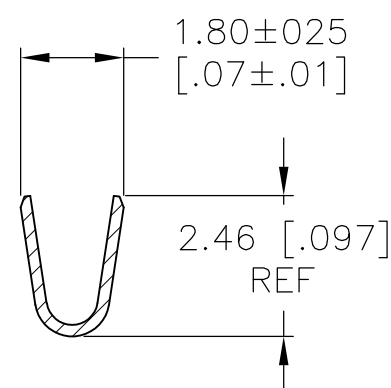
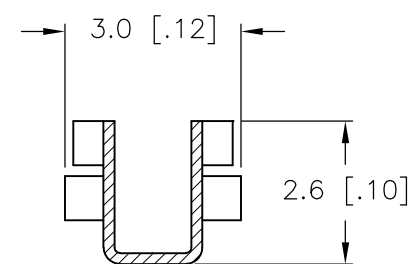


SECTION A-A






SECTION B-B



SECTION C-C

- 1 WIRE RANGE: 0.3–0.82mm² (22–18 AWG)
- 2 INSULATION RANGE: 1.50 – 3.10 DIA.
- 3 FINISH: 0.76μm MINIMUM GOLD IN LOCALIZED GOLD PLATE AREA OVER 1.27μm MINIMUM NICKEL.
- 4 FINISH: 2.54μm MINIMUM PRE–TIN IN LOCALIZED TIN PLATE AREA.
- 5 FINISH: 2.54μm MINIMUM PRE–TIN ALL OVER.

GOLD 	PHOS. BRZ.	794955-4
PRE-TIN 	PHOS. BRZ.	794955-3
GOLD 	BRASS	794955-2
PRE-TIN 	BRASS	794955-1
FINISH	MATERIAL	PART NO.

THIS DRAWING IS A CONTROLLED DOCUMENT.		DWN S. HAMM 07-SEP-2001	 TE Connectivity					
		CHK D. COLEY 07-SEP-2001						
DIMENSIONS: mm [INCHES]	TOLERANCES UNLESS OTHERWISE SPECIFIED:	APVD D. COLEY 07-SEP-2001	NAME					
		PRODUCT SPEC 108-2112	TERMINAL PIN VAL-U-LOK(TM)					
	0 PLC ± 1 PLC ± 0.25 [.010] 2 PLC ± 0.15 [.006] 3 PLC ± - 4 PLC ± ANGLES ± ±	APPLICATION SPEC 114-13172						SIZE
		WEIGHT	A2	00779	 -794955	—		
MATERIAL	FINISH	CUSTOMER DRAWING				SCALE 10:1	SHEET 1 of 1	REV H4

Mouser Electronics

Authorized Distributor

Click to View Pricing, Inventory, Delivery & Lifecycle Information:

[TE Connectivity:](#)

[794955-2](#)