



Xitanium Constant Current Xtreme

Xitanium 75W 0.53A AOCM 1-10V 230V-Y sXt

Xitanium Xtreme LED drivers provide constant current output, optimal for a single string of LEDs. With exceptional operating efficiency, our drivers significantly reduce energy costs. The Xitanium Xtreme portfolio offers both central and standalone dimming protocols further increasing the energy savings and CO2 reductions achieved with LED lighting. The fully programmable drivers deliver all dimming options and a range of currents in a single driver. System reliability is maximized with intelligent temperature monitoring of the LED light engine. The full portfolio offers maximum flexibility with customizable operating settings, delivering optimal performance tailored for each design.

Product data

• General Characteristics

Input Frequency	50/60 Hz
IP Classification	-
Lifetime 90% surv.@Tcaselife	80000 hr
Housing Color	Black

• Operating Characteristics

Ripple current	30 %
Efficiency Range	92 %
Output Power Range	75 W
Power Factor (100% load)	0.95 (min) -
Input Power max	82 W
Output Voltage Range	71-142 V
Output Current Range (mA)	100-530
Total Harmonic Distortion IEC	10 (max) %
Dimming range	100-10 %
Dimmable	Yes
Constant Lumen Output	-
Input Current max	36 (max) mA
Inrush Current Peak	70 (max) A
Output Current Tolerance	-5 (min), 5 (max) %
Inrush Current Width to 50%	120 us
Type of Dimming	1-10V
Input Voltage Range (AC)	230 V
Power Factor (dimmed 50%)	0.92 (min) -
Earth leakage current	0.7 (max) mA

Max drivers on MCB(16A type-B)	16 (max) x
Surge Protection (comm./diff.)	4/4 kV
LumiStep Dimming Time	-
LumiStep Time After Midpoint	-

• Wiring Characteristics

Connection on driver to L2	Wire
Input Wire Length	275.0 mm
Input Wire Diameter	0.82 mm2
Control Wire Diameter	0.82 mm2
Control Wire Length	270 mm
Output Wire Length	270 mm
Output Wire Diameter	0.82 mm2

• Temperature Characteristics

T-case Lifetime	70 C
T-case maximum	80 (max) C
T-ambient	-40 (min), 55 (max) C
Tc Thermal Cut off Driver	85 C
Tc Thermal Cut off Module	-

• Product Dimensions

Length A1	167.5 mm
Length A3	138.1 mm
Width B1	59.1 mm

PHILIPS

Xitanium Constant Current Xtreme

Height C1 37.7 mm
 Fixing Hole Diameter D1 4.5 mm
 Fixing Hole Distance Width B2 42.9 mm
 Fixing Hole Distance Length A2 151.6 mm

• Approval&Application Chars

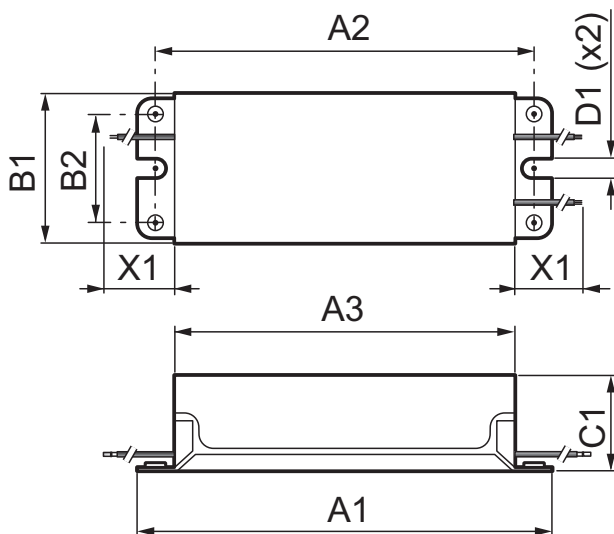
Isolation classification Class II
 ENEC certificate Yes
 CE marking Yes
 RoHS compliance Yes

• Product Data

Order code 929000712403

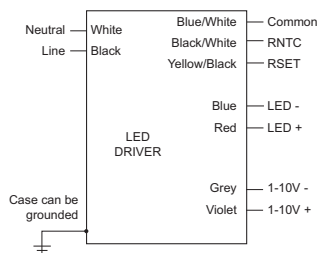
Full product code 929000712403
 Full product name Xitanium 75W 0.53A AOCCM 1-10V 230V-Y sXt
 Order product name Xitanium 75W 0.53A AOCCM 1-10V 230V-Y sXt
 Pieces per pack 1
 Packing configuration 12
 Packs per outerbox 12
 Bar code on pack - EAN1 8718291691532
 Bar code on outerbox - EAN3 8718291691532
 Logistic code(s) - 12NC 929000712403
 Net weight per piece 0.803 kg

Dimensional drawing



Xitanium 75W 0.53A AOCCM 1-10V 230V-Y sXt

Product	A1 (Norm)	A2 (Norm)	A3 (Norm)	B1 (Norm)	B2 (Norm)	C1 (Norm)	D1 (Norm)	X1 (Norm)
Xitanium 75W 0.53A AOCCM 1-10V 230V-Y sXt	167.5	151.6	138.1	59.1	42.9	37.7	4.5	-



Xitanium 75W 0.7A AOCCM 1-10V GL-Y sXt



© 2013 Koninklijke Philips N.V. (Royal Philips)
 All rights reserved.

Specifications are subject to change without notice. Trademarks are the property of Koninklijke Philips N.V. (Royal Philips) or their respective owners.

www.philips.com/lighting

2013, June 25
 data subject to change