



### ■ Features :

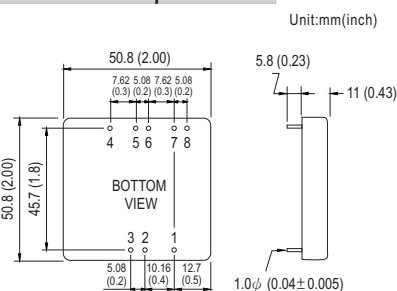
- 2"x2" compact size
- 2:1 wide input range
- High efficiency up to 93%
- 1500VDC I/O isolation
- Built-in remote ON / OFF control
- Built-in remote sense
- Trimming output  $\pm 10\%$
- Comply with CE / FCC without external components
- Protections: Short circuit / Overload / Input and output Over voltage
- Cooling by free air convection
- Six-sided shield metal case
- 100% burn-in test
- Low cost / High reliability
- Output 3.3V available
- 2 years warranty



### SPECIFICATION

ORDER NO.			SKA60A-05	SKA60B-05	SKA60C-05	SKA60A-12	SKA60B-12	SKA60C-12	SKA60A-15	SKA60B-15	SKA60C-15
OUTPUT	DC VOLTAGE		5V			12V			15V		
	CURRENT RANGE		1.2 ~ 12A			0.5 ~ 5A			0.4 ~ 4A		
	RATED POWER		60W								
	RIPPLE & NOISE (max.) <small>Note.2</small>		60mVp-p			80mVp-p			100mVp-p		
	LINE REGULATION <small>Note.3</small>		±0.5%								
	LOAD REGULATION <small>Note.4</small>		±0.5%								
	VOLTAGE ACCURACY		±2.0%								
	SWITCHING FREQUENCY		250KHz min.								
	EXTERNAL CAPACITANCE LOAD (max.)		1000uF			220uF			100uF		
EXTERNAL TRIM Adj. RANGE(Typ.)		±10%									
INPUT	VOLTAGE RANGE		A: 9 ~ 18VDC   B: 18 ~ 36VDC   C: 36 ~ 75VDC								
	EFFICIENCY (Typ.)		91%	90.5%	92%	92%	92.5%	92%	92%	93%	92.5%
	DC CURRENT	Full load	5505mA	2775mA	1370mA	5445mA	2715mA	1370mA	5400mA	2690mA	1370mA
		No load	185mA	120mA	60mA	160mA	120mA	60mA	160mA	120mA	85mA
	FILTER		Pi network								
	REMOTE CONTROL		Power ON : R.C ~ -Vin > 2.5VDC or open circuit ; Power OFF : R.C ~ -Vin < 0.5VDC or short								
PROTECTION <small>(Note. 5)</small>	PROTECTION		Fuse recommended								
	OVER CURRENT		110% ~ 160% rated output power Protection type : Hiccup mode, recovers automatically after fault condition is removed								
	SHORT CIRCUIT		All output equipped with short circuit Protection type : Hiccup mode, recovers automatically after fault condition is removed								
	OVER VOLTAGE	Input(Typ.)	A: >20 ~ 25VDC   B: >40 ~ 50VDC   C: >80 ~ 100VDC input voltage   Protection type : Shut down o/p voltage, recovers automatically after fault condition is removed								
		Output(Typ.)	5Vo : 7V ~ 8.95V ; 12Vo : 15V ~ 19.2V ; 15Vo : 18V ~ 23.3V   Protection type : Clamp by TVS diode								
ENVIRONMENT	WORKING TEMP.		-40 ~ +70℃ (Refer to "Derating Curve")								
	CASE TEMP.		+100℃ max.								
	WORKING HUMIDITY		20% ~ 90% RH non-condensing								
	STORAGE TEMP., HUMIDITY		-55 ~ +105℃, 10 ~ 95% RH								
	TEMP. COEFFICIENT		±0.03% / ℃ (0 ~ 50℃)								
	VIBRATION		10 ~ 500Hz, 2G 10min./1cycle, period for 60min. each along X, Y, Z axes								
SAFETY & EMC	SAFETY STANDARDS		EAC TP TC 004 approved								
	WITHSTAND VOLTAGE		I/P-O/P: 1.5KVDC								
	ISOLATION RESISTANCE		I/P-O/P: 100M Ohms / 500VDC / 25℃ / 70% RH								
	EMC EMISSION		Compliance to EN55032 Class A, FCC part 15 Class A without external components, EAC TP TC 020								
	EMC IMMUNITY		Compliance to EN61000-4-2,3,4,5,6,8, light industry level, criteria A, EAC TP TC 020								
OTHERS	DIMENSION		50.8*50.8*11.0 mm or 2**2**0.43" inch (L*W*H)								
	WEIGHT		67g								

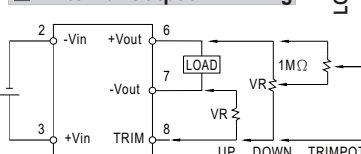
### ■ Mechanical Specification



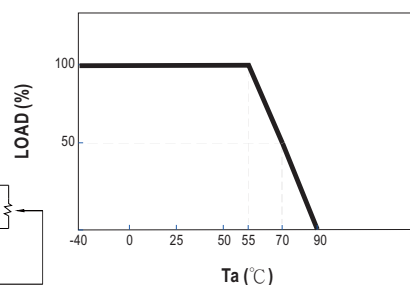
### ■ Pin Configuration

Pin No.	Output	Pin No.	Output
1	R.C	5	+R.S
2	-Vin	6	+Vout
3	+Vin	7	-Vout
4	-R.S	8	TRIM

### ■ External Output Trimming



### ■ Derating Curve



### NOTE

1. All parameters are specified at normal input, rated load, 25°C 70% RH ambient.
2. Ripple & noise are measured at 20MHz by using a 12" twisted pair terminated with a 0.1uF & 47uF capacitor.
3. Line regulation is measured from low line to high line at rated load.
4. Load regulation is measured from 10% to 100% rated load.
5. Please prevent the converter from operating in overload or short circuit condition for more than 30 seconds.

※ Product Liability Disclaimer : For detailed information, please refer to <https://www.meanwell.com/serviceDisclaimer.aspx>