

# **RS-485/ETHERNET CONVERTER PD8 TYPE**



## **USER'S MANUAL**



# **RS-485/ETHERNET CONVERTER PD8 TYPE**

---

## **USER'S MANUAL**

### **CONTENTS**

<b>1. APPLICATION .....</b>	<b>5</b>
<b>2. PD8 CONVERTER SET .....</b>	<b>5</b>
<b>3. INSTALLATION AND BASIC SAFETY REQUIREMENTS .....</b>	<b>8</b>
3.1. Converter installation .....	10
3.2. PD8 electrical connections .....	10
3.3. Connection way with devices .....	12
3.4. Requirements for lead-out connections .....	13
3.5. Transmission parameters of the serial interface .....	14
3.6. Configuration of PD8 network settings .....	14
3.6.1. Installation of the « PD8Config.exe » software .....	15
3.6.2. Description of the configuration software .....	15
3.7. Capabilities to configure PD8 .....	17
3.7.1. Installation of the PD8 configuration applet service component on a PC computer .....	18
3.7.2. Notes concernig the configuration applet in the user's browser .....	18
3.7.3. Change of authorisation data .....	19
<b>4. OPERATION MODE WITH REALPORT SERVICE .....</b>	<b>8</b>
4.1. Information about RealPort service controller files .....	13
4.2. Example of controller installation in Windows XP .....	13
4.3. Configuration of RealPort controller in Windows XP .....	13
4.4. Example of LUMEL HEAT and LUMEL ENERGY configuration to co-operate with PD8 .....	13

<b>5. SERIAL BRIDGE MODE WITH UDP PROTOCOL .....</b>	<b>25</b>
5.1. Settlement of serial link transmission buffering .....	13
5.2. Operation configuration of the serviced client .....	13
5.3. Setting of the serial transmission server .....	13
5.4. Managing of the service server .....	13
<b>6. TECHNICAL DATA .....</b>	<b>27</b>
<b>7. ORDERING CODES .....</b>	<b>27</b>
<b>8. MAINTENANCE AND WARRANTY .....</b>	<b>28</b>

## 1. APPLICATION

The PD8 converter allows to transmit data to the master devices through the computer network of Ethernet type, to devices equipped with the RS-485 interface. The converter is available in two versions concerning its operation manner: Real-Port network service and serial bridge with UDP protocol.

In the version nr 1, the PC computer with the Ethernet network card is the connected master device. In the version nr 2, the converter co-operates with the device with the master function and the RS-485 serial interface. The version nr 1 of the PD8 converter requires the installation of a programmed controller of the virtual serial port on the PC computer with the Windows system.

This controller ensures to present-days master systems, e.g. LUMEL-HEAT and LUMEL-ENERGY systems, the possibility to transmit data between devices with RS-485 interface, through the Ethernet network, thanks the use of converters of PD8 type (Fig. 1). The converter used in this manner enables to co-operate only with one master computer in the giving moment.

In case of using PD8 for servicing MODBUS and LUMBUS industrial protocols - its correct co-operation with master systems on a PC depends on their built-in mechanisms to control break-time intervals between received transmission characters. When using PD8 in the version nr 2, one can develop the RS-485 bus with successive segments by means of additional PD8 converters and the local Ethernet network.

The suitable configuration, at least of one pair of converters, allows to obtain their operation in the serial bridge mode (Fig. 3.). The configuration of their operation is also possible in the mode „one-to-several“ ( in the shape of a set including maximally 65 converters - Fig. 4.)

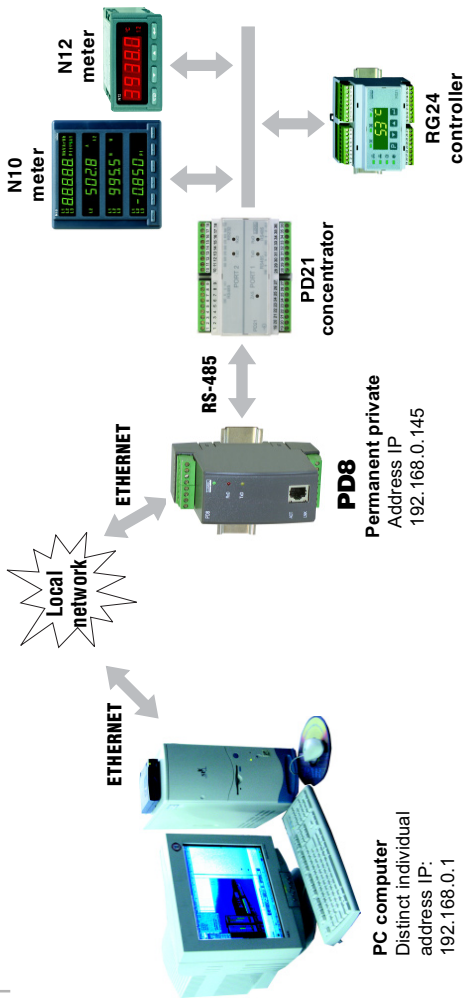
The version nr 2 operates in the local Ethernet network servicing the UDP datagram protocol.

## 2. PD8 CONVERTER SET

The converter set is composed of:

- |                         |      |
|-------------------------|------|
| - PD8 converter         | 1 pc |
| - PD8 user's manual     | 1 pc |
| - warranty card         | 1 pc |
| - mini CD with software | 1 pc |

***When unpacking the converter, please check the delivery completeness and whether the type and version code on the data plate correspond to the order.***



*Fig. 1. Exemplary application of the PD8 converter (version Nr1) in a local computer network.*

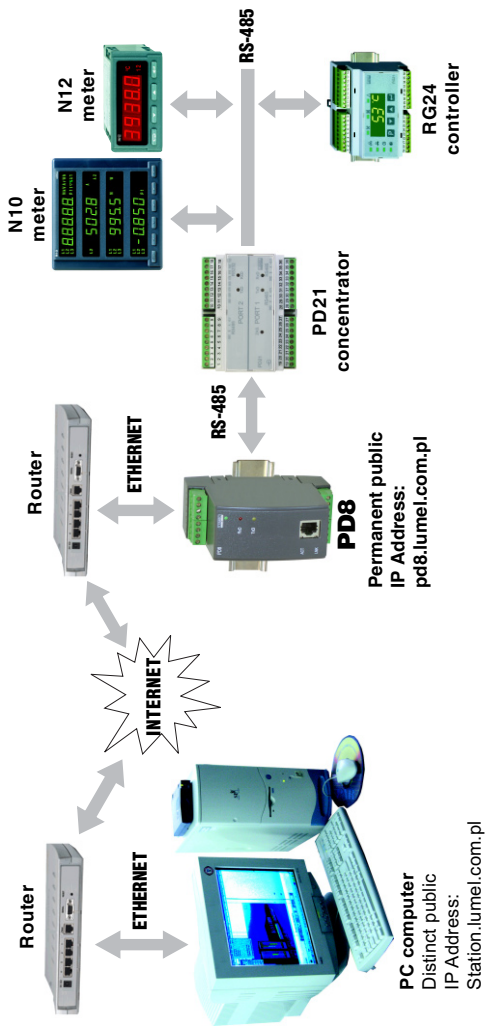


Fig. 2. Exemplary application of the PD8 converter (version nr 1) in an wide area computer network.

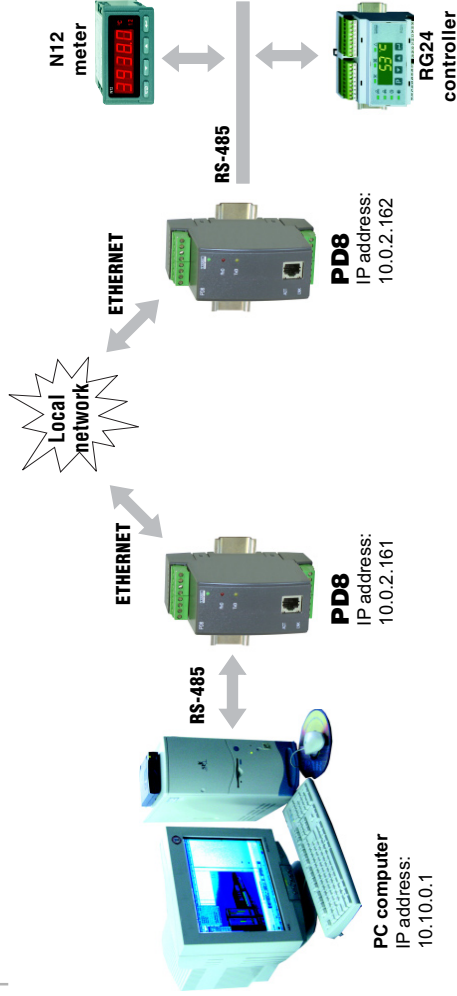


Fig. 3. Exemplary application of the PD8 converter (version nr 2) in the serial bridge mode.



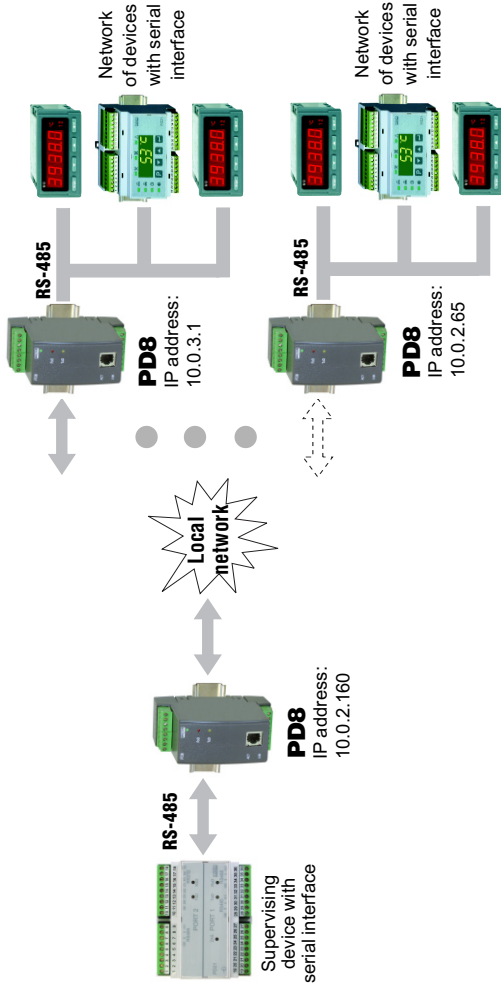


Fig. 4. Exemplary application of the PD8 converter (version nr 2) in the „one-to-several,, mode.

### 3. INSTALLATION AND BASIC SAFETY REQUIREMENTS

Symbols located in this service manual mean:

#### **WARNING!**



Warning of potential, hazardous situations. Especially important. One must acquaint with this before connecting the converter. The non-observance of notices marked by these symbols can occasion severe injuries of the personnel and the damage of the instrument.

#### **CAUTION!**



Designates a general useful note. If you observe it, handling of the converter is made easier. One must take note of this, when the instrument is working inconsistently to the expectations.

#### **Possible consequences if disregarded !**

In the security scope the converter meets the requirements of the EEC Low-Voltage Directive (EN 61010 -1 issued by CENELEC).

#### **Remarks concerning the operator safety:**

##### **1. General**

- The PD8 converter is destined to be mounted on a panel.
- Non-authorized removal of the required housing, inappropriate use, incorrect installation or operation creates the risk of injury to personnel or damage to equipment. For more detailed information please study the User's Manual.
- All operations concerning transport, installation, and commissioning as well as maintenance must be carried out by qualified, skilled personnel and national regulations for the prevention of accidents must be observed.
- According to this basic safety information, qualified, skilled personnel are persons who are familiar with the installation, assembly, commissioning, and operation of the product and who have qualifications necessary for their occupation.

##### **2. Transport, storage**

- Please observe the notes on transport, storage and appropriate handling.
- Observe the climatic conditions given in Technical Data.

##### **3. Installation**

- The meter must be installed according to the regulation and instructions given in this User's Manual.
- Ensure proper handling and avoid mechanical stress.

- Do not bend any components and do not change any insulation distances.
- Do not touch any electronic components and contacts.
- Instruments may contain electrostatically sensitive components, which can easily be damaged by inappropriate handling.
- Do not damage or destroy any electrical components since this might endanger your health!

#### **4. Electrical connection**

- Before switching the instrument on, one must check the correctness of connection to the network.
- In case of the protection terminal connection with a separate lead one must remember to connect it before the connection of the instrument to the mains.
- When working on live instruments, the applicable national regulations for the prevention of accidents must be observed.
- The electrical installation must be carried out according to the appropriate regulations (cable cross-sections, fuses, PE connection). Additional information can be obtained from the user's guide.
- The documentation contains information about installation in compliance with EMC (shielding, grounding, filters and cables). These notes must be observed for all CE-marked products.
- The manufacturer of the measuring system or installed devices is responsible for the compliance with the required limit values demanded by the EMC legislation.

#### **5. Operation**

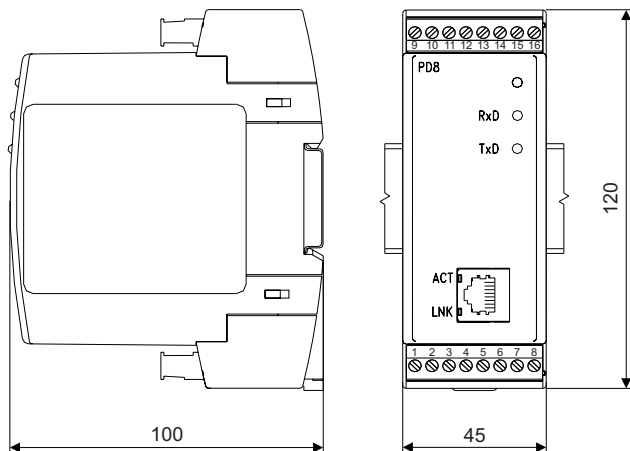
- Measuring systems including PD8 converters, must be equipped with protection devices according to the corresponding standard and regulations for prevention of accidents.
- After the converter has been disconnected from the supply voltage, live components and power connections must not be touched immediately because capacitors can be charged.
- The housing must be closed during operation.

#### **6. Maintenance and servicing**

- Please observe the manufacturer's documentation.
- Read all product-specific safety and application notes in this User's Manual.
- Before taking the converter housing out, one must turn the supply off.
- The removal of the converter housing during the guarantee contract period may cause its cancellation.

### 3.1 Converter installation

The PD8 converter is foreseen to be installed on a 35 mm DIN rail in accordance with the fig. 3.



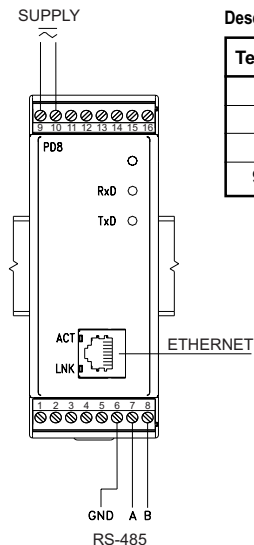
**Fig. 3. Overall and assembly dimensions**

### 3.2. PD8 electrical connections

The supply and external signals must be connected acc. to fig. 4 and 5 and tables 1 and 2, in which the assignment of particular PD8 converter lead-outs have been described.

There are three diodes on the converter frontal plate:

- **Green** - signalling the supply switching on
- **Red (RxD)** - signalling the data reception through RS-485
- **Yellow (TxD)** - signalling the data broadcasting through RS-485



**Description of PD8 converter leads-out**

**Table 1**

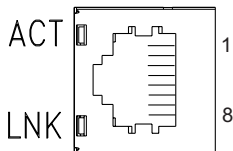
Terminal	Terminal description
6	Mass of RS-485 interface with optoisolation
7	Line A of RS-485 interface with optoisolation
8	Line B of RS-485 interface with optoisolation
9, 10	Lines to supply the converter

In the RJ-45 socket of the Ethernet interface 2 diodes are located:

- green (ACT) - signalling the network activity of the device (transmission or reception)
- orange (LNK) - signalling the active network connection

**Fig.4**

**External connections of the PD8 converter**



**Fig. 5**

**Frontal view of the RJ-45 Ethernet interface socket**

**Description of RJ-45 socket signals**

**Table 2**

No	Signal	Description
1	TX+	Transmission +
2	TX-	Transmission -
3	RX+	Reception +
4	EPWR+	(no used)
5	EPWR+	(no used)
6	RX-	Reception -
7	EPWR-	(no used)
8	EPWR-	(no used)

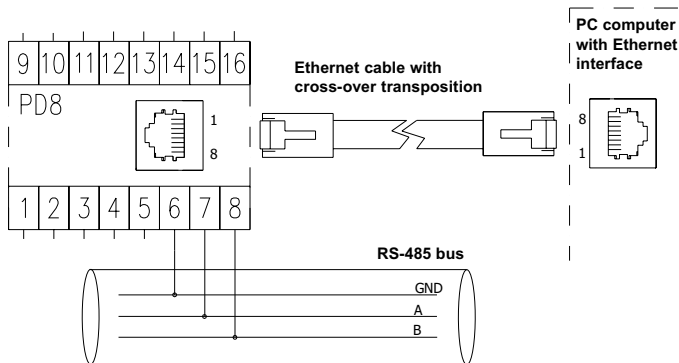
### 3.3 Connection way with devices



The fig. 6 presents the manner of PD8 converter connection with devices from the object side with RS-485 interface and the computer equipped with Ethernet interface. From the RS-485 interface side, the converter can be directly connected to the RS-485 bus.

For the Ethernet interface, the twist of STP type (screened) of category 5, should be set with RJ-45 plugs and the wire colouring (in accordance with the table 3) in the following standard:

- EIA/TIA 568A for both plugs, in so-called direct connection of PD8 to the network concentrator (hub), or network switch (switch).
- EIA/TIA 568A for the first plug or EIA/TIA 568B for the second plug in so-called connection with a cross-over transposition, applied among other things in the direct PD8 connection to the computer.



**Fig. 6 Example of PD8 converter direct connection with the PC computer**

Wire No	Signal	Wire colour in accordance with standard	
		EIA/TIA 568A	EIA/TIA 568B
1	TX+	White-green	White-orange
2	TX-	Green	orange
3	RX+	White-orange	White-green
4	EPWR+	Blue	Blue
5	EPWR+	White-blue	White-blue
6	RX-	orange	Green
7	EPWR-	White-brown	White-brown
8	EPWR-	brown	brown

**NOTE:**

Because of electromagnetic interference, one must use screened wires to connect RS-485 interface signals. The screen must be connected to the protective terminal in one point.

The supply must be connected with a two-wire cable with an appropriate wire diameter, ensuring its protection by means of a fusible cut-out.

The remove of the converter housing during the guarantee period will cause its invalidation.

**3.4. Requirements for lead connections**

Occurring in practice, different interference sources influence the converter in a permanent or pulse way from the supply network side because of other devices' action. The level of this interference should be reduced to a value smaller than the resistance threshold, first of all, through the appropriate installation of the converter in the object.

**In order to obtain a full immunity of the converter against electromagnetic Interference in an environment with unknown interference level, it is recommended to observe following principles:**



- There should be a switch or a circuit breaker in the building installation. This element should be situated near the device, easy accessible for the operator. It should be marked as the instrument switching the device off.
- Do not supply the converter from the network near devices generating high pulsing interference.

- Apply network filters for groups of modules servicing the same object.
- Apply the general principle that the wires (group of wires) leading different signals should be led in the possible farthest distance between them (not less than 50 cm) and the crossing of such group of wires should be made at right angle.
- Taking into consideration electromagnetic interference, one must use shielded wires to connect RS-485 interface signals. The shield must be connected to the protective terminal in a single point. The supply must be connected by two-wire cable with a suitable cross-section ensuring its protection by means of a cut-out.

### 3.5. Transmission parameters of the serial interface

The PD8 converter co-operates from the RS-485 side with industrial devices at following baud rates: 300, 600, 1200, 2400, 4800, 9600, 19200, 38400, 56000 bit/s. Maximal serial baud rates depend on the length of transmission lines and are presented on the table 4.

At a length over 800 m. One must apply a terminator ( a 120 Ohm resistance) which connects terminals „A” and „B” of the PD8 converter.

Dependence of maximal baud rate from the line length

Table 4

Length of the transmission line	Maximal baud rate	Notes
200 m	56000 bit/s	Without a terminator
800 m	38400 bit/s	With a terminator for baud rate > 9600 bit/s
1200 m	9600 bit/s	With a terminator

### 3.6. Configuration of PD8 network settings

Similarly to other network devices, the PD8 converter requires at its first start a suitable configuration of settings for needs of the IP network protocol.

These settings include: IP address of the PD8 converter, subnet mask, address of the default gateway. These data must be obtained from the administrator of the computer network, to which the PD8 converter is connected. In case of the converter connection to the local computer network, in which the DHCP service is accessible, the PD8



converter will be configured automatically owing to it.

To obtain information about the IP address assigned to the converter, one must start the „PD8Conf.exe” on the PC computer connected to the same computer network as the PD8.

### **3.6.1. Installation of the „PD8Config.exe” software**

The installation consists on the copying of the „PD8Conf.exe” software file from the mini CD into the computer catalog indicated by the user. The software can be also directly activated from the mini CD diskette.

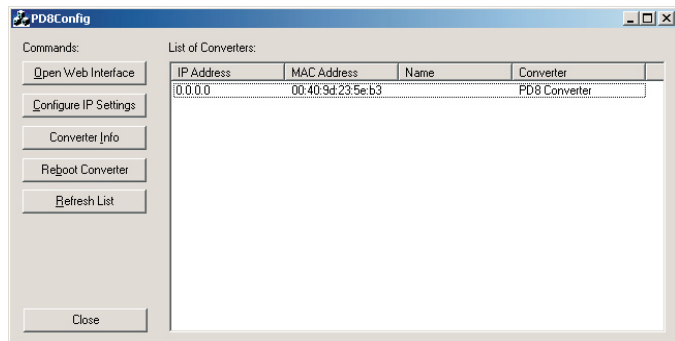
### **3.6.2. Description of the configuration software**

The „PD8Config.exe” software added to the set serves to configure network settings of the PD8 converter.

The software after starting, searches the local computer network and creates the list of accessible converters of PD8 series.

The list is displayed in the field „ List of Converters” (fig. 7)

The current IP address of the only one converter in the hereby example is visible in the „IP Address” field. If one can see, that the converter has an unsuitable IP address of 0.0.0.0. type, that means, that in the given computer network, the DHCP service does not occur. In such a case, one must configure manually the PD8 converter with the unsuitable address, in the following way:



**Fig. 7 List of accessible PD8 converters**

- After marking the given converter, click the „Configure IP settings” key,
- In the revealed „Set up the IP address” window, one must fulfil the fields with data obtained from the network manager (fig. 8). Leave empty, the field with the password.
- After pushing the „Apply” key in, one must wait some time till the „Operation carried out successfully” message appears. After confirming the message, one must click from the main window the „Refresh list” command. After a while, the list of accessible converters will be actualised and appears in accordance with the fig.9.

**Set IP Address** [X]

Assign an IP Address, subnet mask and gateway to your PD8 converter. Contact your network administrator if you do not know this information.

Converter: PD8 Converter

MAC Address: 00:40:9d:23:5e:b3

☐ Automatically obtain network settings via DHCP

☒ **Manually configure network settings**

IP Address: 10 . 0 . 2 . 182

Subnet Mask: 255 . 0 . 0 . 0

Default Gateway: 0 . 0 . 0 . 0

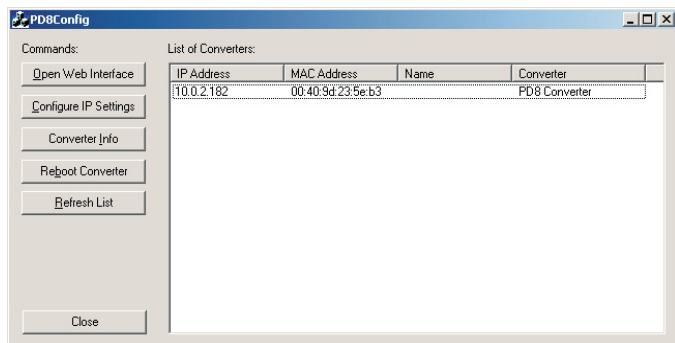
Password: [ ]

[ Apply ] [ Cancel ]

**Fig. 8 Configuration of exemplary PD8 network parameters**

The „Reboot converter” command is useful after the succeeding manual network configuration, carried out by remote control through the computer network. Then, new network settings in PD8 are activated only after the reboot start of the converter.

The unconditional restart of PD8 can be also performed by pressing the accessible push-button through the hole in the converter housing, after removing the lower terminal 5-8 of the RS-485 terminal.



**Fig. 9 Correctly configured PD8 converter**

Using the „PD8Config.exe” software, one can easily display the Web page served by the indexed PD8. For this purpose, after the converter indication from the list, one must click the „open Web Interface push-button”, what occasions the start of the default internet browser being in the standard accessory of any contemporary user's computer.

**The PD8 converter Web page contains the application which requires the presence of an appropriate service software in the computer. Information concerning the installation of this service are included in the section 3.7.5 of this user's manual.**



### **3.7. Capabilities to configure PD8**

The PD8 converter with factory settings is protected by the user's name and its password against non-authorised changes in the network configuration and commands to restart the converter again. The default user is „root, which has the „dbps” password.

These data can be modified thanks to the configuring applet on the Web page of the given PD8 which is called by the user by means of the internet browser installed on its PC computer.

### ***3.7.1. Installation of the PD8 configuration applet service component in PC***

The embedded applet (application of the Java language) in the user's computer. This service is being accessible after installing the Java JRE service package in the windows system. The package adds the starting plug (plug-in) to the internet browser by means of which, the user opens the Web page with the applet. The PD8 converter applet requires the JRE package in 1.4.0 versions or higher. For this reason, before the first opening of the PD8 page in the user's browser, one must start the installer of JRE package which exists in the „Java JRE” catalogue on the PD8 CD disk.

To install the applet service package into the user's PC, one must carry out following operations:

1. Start the file with extension of the (.exe in the „Java JRE” catalogue of the CD disk.
2. Select the „I accept the terms in the license agreement” in the shown installer window and click „Next”.
3. Select the „typical” option and click „Next”.
4. (Optional Installer step). Mark accessible browsers in the computer and click „Next”.
5. After finishing the installation, click „finish” in the installer window.
6. Call the PD8 Web page in the browser in order to check the JRE installation correctness.
7. Press the „always” push-button in the new window with the „Warning - security” title, the appearance of which means the query about acceptance of the digital signature of the being started applet by the user.
8. Close the browser.

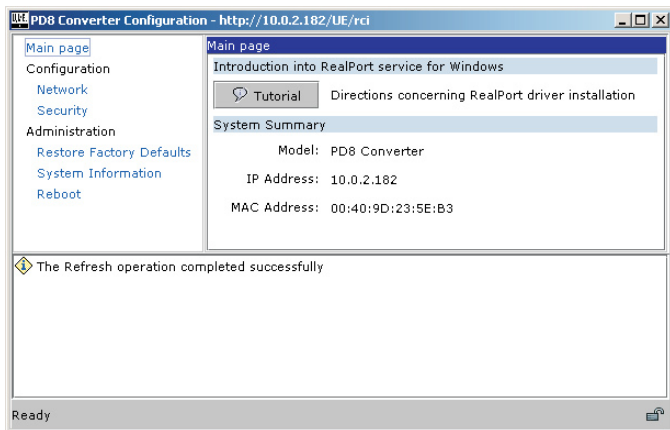
### ***3.7.2. Remarks about the configuration applet in the user's browser***

After writing the PD8 converter Web address in the browser address bar, the user's configuration applet appears in a separate window (fig. 10).

The left side of the application window includes the menu of accessible commands. The right window panel shows data associated with the command passed by the

user in the left panel. Information concerning current operations and errors are given in the lower panel.

From the beginning to the end of its action, the applet maintain the TCP/IP communication with the PD8 converter.

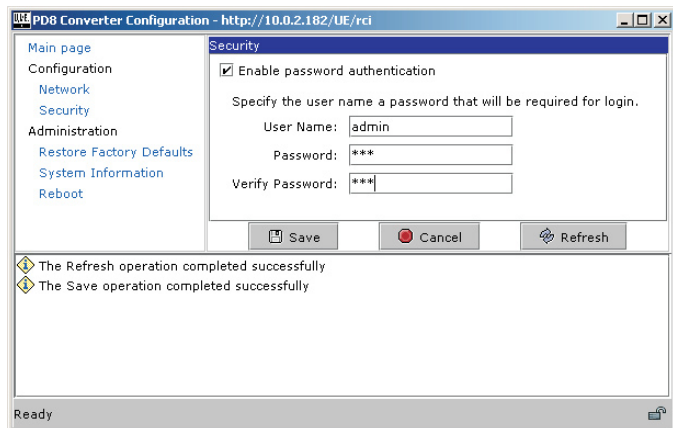


**Fig. 10 Welcome page of user's application**

### **3.7.3. Modification of authentication data**

The selection of the „Security” command application from the left panel enables the managing of the PD8 user's authentication (Fig. 11). By means of the „Enable password authentication” option in the right window panel, we can decide about the authentication switching on and off at restart trials and configuration modifications of PD8.

In case of the option switching on, one must introduce the required user's name and write the password twice. Data will be written into the converter memory after pressing the „Save” key.



**Fig. 11 Procedure of switching the authentication on by the password**

In case of the own password forgetting, one can set its default value by restoring factory settings in PD8.

For this aim the RESET push-button accessible after removing the lower terminal 5-8 of the RS-485 converter interface is used.

To restore factory converter settings one must:

1. switch the converter supply off,
2. push the RESET push-button and holding it down, switch the converter supply on,
3. release the RESET push-button after obtaining the converter operation readiness (16 seconds).

#### **4. OPERATION MODE WITH THE REALPORT SERVICE**

The PD8 converter includes the licensed by DiGi inc. company the RealPort network service enabling the communication by means of the Ethernet link with PC computers, operating under the supervision of Windows operation system. The

installation of the RealPort service in the Windows system causes the addition of the next, so called COM virtual serial port to the list of accessible ports in the given computer.

This port does not have a physical hardware form but a virtual one - thanks to the programmed work emulation of a typical serial link.

The application of additional virtual COM ports allows to replace the serial communication by the Ethernet communication.

**The PD8 converter design allows to obtain in the given time, only one network connection of the RealPort service. That means that only one PC computer of any IP address can communicate with the given computer through the virtual serial port. For other computer, this service is inaccessible in the given moment and for this reason a suitable message about the error appears on their screens.**



#### 4.1. Information about RealPort service driver files

Files of the RealPort service driver are accessible on enclosed mini CD. Versions for two different Windows systems are in two catalogues:

- version for MS Windows 98 and MS Windows Me,
- version for MS Windows 2000, MS Windows XP.

Depending on the system version, one must install the suitable version of the RealPort driver in the operator computer.

Details of the service driver installation for Windows systems are accessible on the Web page of each PD8 converter.

#### 4.2. Example of the driver installation in XP Windows

In order to install the RealPort service driver in the popular operating system presented by Microsoft Windows XP, one must carry out following operations (the installation in other Windows versions differs insignificantly).

##### **Follows these steps to install RealPort on Microsoft Windows XP**

1. Click „Start“, click „Settings“, and then click „Control Panel“.
2. Double-click „Add/Remove Hardware“ to start the Add Hardware Wizard. Click „Next“.

**NOTE:** The Add/Remove Hardware Wizard is searching for new devices.

3. Click „Yes, I have already connected the hardware“ and click „Next“.
4. Scroll down to the bottom of the Installed Hardware list, select „Add a new hardware device“, and then click „Next“.

5. Click „install the Hardware that I manually select from the list (Advanced” and click „Next”.
6. In the „Common hardware types” list, select”Multi-port serial adapters” and click „Next”.
7. Click „Have disk...”.
8. Type the path to the RealPort files and click „OK”, or click”Browse” and locate the files.
9. Select „digirp.inf”, click „Open”, and then click”OK”.
10. Mark the installed device „ Standard RealPort device” in the „Model” list (or click „Digi Connect ME” in the case of Windows 98/ME), click „Next” and click „Next” again.
11. Introduce the IP address of the PD8 converter in the dialog window „Add Digi Hardware Wizard” and remain the port number unchanged, as (771). Click „Next”.
12. In the case of Windows 98/ME, introduce the proper name (e.g. Test) for the PD8 converter in order to the easy identification during the operation. Leave the number of PD8 converter serial ports unchanged as (1).
13. Click „Next” and then „Finish”.
14. confirm successive messages.

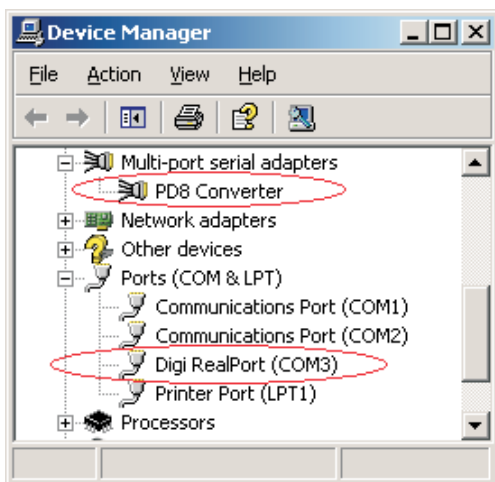
### 4.3. Configuration of the RealPort driver in Windows XP

After carrying out the successful installation in accordance with the previous item, one must additionally configure the RealPort driver by means of the Manager of windows system devices. For this purpose, one must perform following steps:

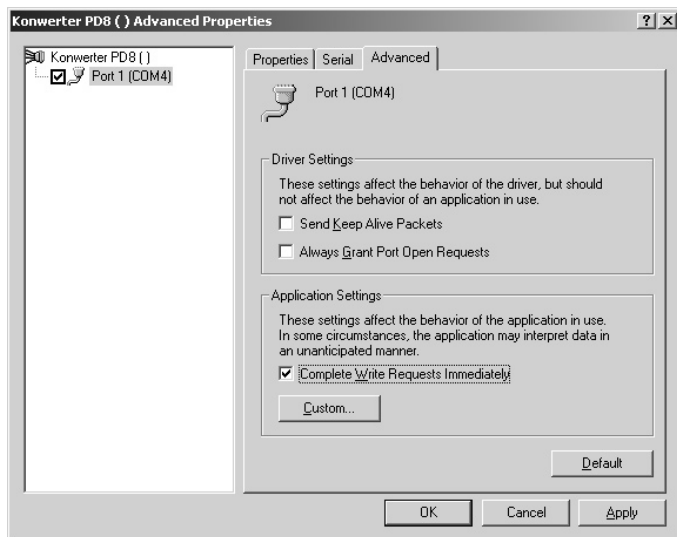
1. click the „Start” push-button, point the „settings” command and click the „Control Panel” command.
2. Click twice the „System” icon to open the System properties” window. Choose the „System” tab and click the „Device manager” push-button.
3. After the „Device administrator” window appearance (fig. 12), unroll the „Ports (COM and LPT)” branch in the tree of accessible devices. One can see that in the exemplary Windows system, three serial ports are accessible: COM1, COM2. As the result of the RealPort controller installation in the system, a successive port is accessible - virtual - COM3, denoted as Digi RealPort (fig.12).
4. Unroll the „Multiport serial adapters” branch which shows the installed PD (visible as” Digi Connect ME” in the Windows 98 system..



5. Click twice on the converter name to obtain the „Test properties” window: (fig. 13).
6. Select the „Advanced” tab and click on the „Properties...” push-button.
7. In the appeared „...Advanced properties” window click the „Port 1 COMx” branch and next choose the „Advanced” tab, and mark the option „Complete Write Requests Immediately...”, in accordance with the example on the fig. 13.
8. Confirm modifications by the „OK.” push-buttons in windows.



**Fig. 12 Exemplary list of devices in the Windows system.**



**Fig. 13. Advanced Driver settings.**

#### **4.4. Example of Lumel Heat and Lumel Energy configuration to co-operate with PD8 converters**

Lumel Heat and Lumel Energy systems communicate with industrial devices by means of COM serial ports. After installing additional virtual COM serial ports, one can refer to them in systems of Lumel series. Then, one must introduce or modify supervising appeals to added virtual ports in new or existing applications. Lumel Energy softwares in versions older than 2.5, service maximally 4 serial ports, and in such systems, virtual serial ports must be installed as COM1...4.

One must correct the parameter of the maximal response time for the slave devices (timeout) accessible in master devices to the correct value for PD8.

The delay value can be maximally 1000 ms and depends on:

- maximal response time of slave devices with MODBUS protocol and RS-485 interface,
- flow capacity of the Ethernet network, which the PD8 converter is connect to.

## **5. SERIAL BRIDGE MODE WITH UDP PROTOCOL**

The converter operation in the serial bridge mode enables the expansion of the RS-485 bus by successive segments by means of additional PD8 converters and the Ethernet network. The bridge configuration in the local area allows to create maximally 65 accessible points between the RS-485 and Ethernet network, using 65 PD8 converters.

The service configuration of the serial bridge for the given converter can be divided on 4 stages:

- determination of serial link transmission parameters,
- switching the service client on, definition of addresses and IP ports for other converters which have to retransmit serial data frames,
- definition of the operation way for the mechanism buffering frames of the serial transmission protocol,
- switching the service server on the given IP port of the configured converter.

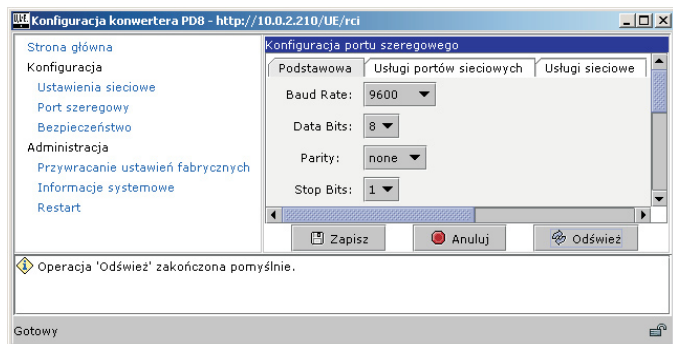
The setting of the serial bridge operation way is carried out by using the configuration application on the Web page of the given PD8, which is called by the user by means of the internet browser installed in his PC computer.

### **5.1. Settlement of serial link transmission parameters**

The selection of the „Serial Port“ command application from the left panel, causes the display of the current setting list on the right panel, concerning the converter operation.

In the first „Basic“ tap, the user has the possibility to change parameters of the converter RS-485 port (Fig. 14).

When setting transmission parameters, one must remember to set the identical type of transmission word for each connected converter. The baud rate can be different between segments but consistent with settings of connected devices to the given RS-485 segment.



**Fig. 14. Setting of converter serial port parameters**

## 5.2. Configuration of service client operation

The configuration of the bridge client is carried out after choosing by the user, the second tab „Network services” in the right panel „Serial port configuration (fig 15). To begin the configuration process, one must previously switch the „Enable UDP client” on.

Fields of addresses and converter IP ports, which have to retransmit frames of serial data, are fulfilled acc. to following principles:

- In case of connection in the relation 1 to 1, define in each converter the address and IP port of the remaining converter being in relation.
- In case of connection in the relation 1 to several, set in each slave converter the address and IP port of the master converter. However, in the only master converter set all (maximally) 64 addresses and ports slave converters remaining in relation.

The default number of the IP port for the serial bridge service is 2000. In case of a local conflict occurrence with another network service in the given network, which uses the same port - there is the possibility to change its number - both for the bridge service server and for the client.

**Konfiguracja portu szeregowego**

Podstawowa    Usługi portów sieciowych    Usługi sieciowe

Poniższa usługa monitoruje dane na porcie szeregowym i przysyła je do serwerów lub

**Klient UDP**

Automatyczne wysyłanie danych szeregowych do jednego lub więcej konwerterów w si

☒ Włącz klienta UDP

Wyślij dane pod następującym warunkiem:

☒ Po upływie następującej liczby milisekund ciszy

10 ms (1-65535)

Po zgromadzeniu następującej liczby bajtów

260 bajtów (4-4096)

Wyślij dane pod następujące lokalizacje:

Cel nr	Adres IP	Port UDP	Opis	Aktywny
1	192.168.0.200	2101	Centrala	<input checked="" type="checkbox"/>
2	0.0.0.0	0		<input type="checkbox"/>

Zapisz    Anuluj    Odśwież

**Fig. 15. Setting of the UDP client for the serial bridge.**

### 5.3. Setting of the serial transmission buffering

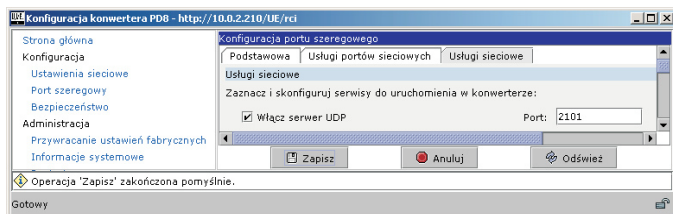
In the „Network port services” tab, there is also the possibility to change the way of serial transmission buffering (Fig. 17)

The use of the buffering mechanism is indispensable in the case of frame retransmission of the MODBUS or LUMBUS industrial protocol. The definition of the number of milliseconds of silence allows to detect the end of the MODBUS RTU frames, after which, their retransmission should follow through the Ethernet network.

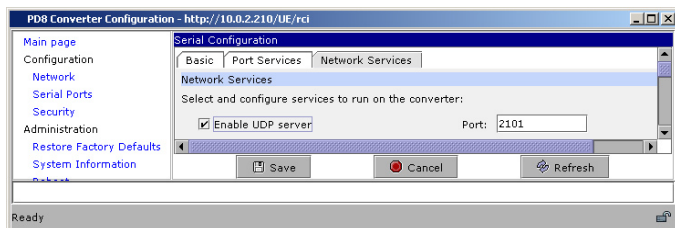
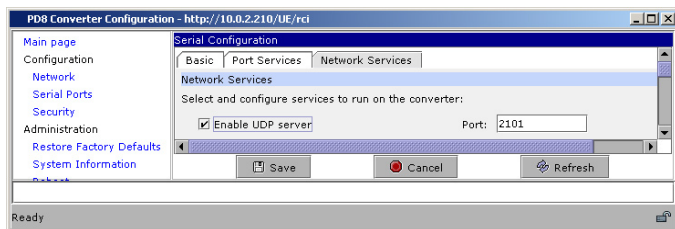
The additional parameter defining the buffer dimension enable to protect against its overflow or the transmission deadlock.

## 5.4. Management of the service server

The configuration of the bridge server is carried out after choosing by the user the third „Network services” tab being in the right „Serial port configuration” application (Fig. 16). The start of the bridge service sever in the given converter is carried out after giving the number of the IP port and pointing the „Enable UDP server” option. After introducing all changes in the „Serial port configuration” panel, one must write the converter memory, pressing the „Save” pushbutton.



**Fig 16. Switching the UDP server on the given port.**



## 6. TECHNICAL DATA

### Transmission data:

- RS-485 interface:
  - data format 9, 10, 11, 12 [bit]
  - baud rate of RS-485 port 300, 600, 1200, 2400, 4800, 9600, 19200, 38400, 56000 bit/s
  - maximal response time to the query frame 1000 ms
  - transmission range up to 1200 m at 9600 bit/s
- ETHERNET interface:
  - interface type 10/100Base-T
  - transmission protocol Digi RealPort®, TCP/IP, HTTP, ICMP, DHCP, ARP
  - baud rate 10, 100 Mbit/s
  - transmission range up to 100 m
- Status and data flow indicators 5 diodes (supply, RxD, TxD, ACT, LNK)
- Time to obtain the readiness from the moment of switching on  $\geq 16$  s

**Converter power consumption**  $\leq 5$  VA

### Rated operation conditions:

- supply voltage 85...230...253 V  
or 20...24...50 V a.c./d.c.
- supply voltage frequency 40...50...440 Hz
- ambient temperature -20...23...45°C
- relative humidity  $< 85\%$
- external magnetic field  $< 400$  A/m
- work position any
- admissible sinusoidal vibrations:
  - frequency 10...150 Hz
  - displacement amplitude  $\leq 0.15$  mm

**Storage and transport conditions:**

- ambient temperature -20... 70°C
- relative humidity < 85%
- admissible sinusoidal vibrations:
  - frequency 10... 150 Hz
  - displacement amplitude ≤ 0.35 mm

**Protection level ensured by:**

- housing IP 30
- terminals IP 20

**Dimensions**

45 × 100 × 120 mm

**Weight**

0.2 kg

**Housing**

adapted to be mounted  
on a 35 mm rail  
acc. to EN 60715:2002.

**Electromagnetic compatibility:**

- immunity against interference acc. to EN 61000-6-2
- immunity against decays acc. to EN 61000-6-2
- emission of radio noise acc. to EN 61000-6-4

**Safety requirements:****acc. to EN 61010-1:**

- installation category II
- pollution level 2
- maximal phase-to-earth  
working voltage:
  - for the supply circuit 300 V
  - for other circuits 50 V



## 5. EXECUTION AND ORDERING CODES

Ordering codes of the PD8 converter

PD8 Converter	X	X	X
<b>Supply voltage:</b>			
85... 253 V a.c./d.c. ....	1		
20... 50 V a.c./d.c. ....	2		
<b>Operation mode:</b>			
RealPort network service .....	1		
serial bridge with UDP protocol .....	2		
on order* .....	X		
<b>Acceptance tests:</b>			
without a quality inspection certificate .....	0		
with an extra quality inspection certificate .....	1		
according user's agreements* .....	X		

\* The execution code will be assigned by the producer number.

### EXAMPLE OF ORDER

Code: **PD8 1 2 1** means :

a **PD8** RS-485/ETHERNET converter

**1** - supply voltage = 85... 253 V a.c./ d.c

**2** - serial bridge with UDP protocol

**1** - delivered with an extra quality inspection certificate.

## 6. MAINTENANCE AND GUARANTEE

The PD8 converter does not require any periodical maintenance.

In case of some incorrect operations:

### **1. After the dispatch date and within the period stated in the guarantee card**

One should return the converter to the manufacturer's Quality Inspection Dept.

If the converter has been used in compliance with the instructions, the manufacturer guarantees to repair it free of charge. The disassembling of the housing causes the cancellation of the granted guarantee.

### **2. After the guarantee period:**

One should send the instrument to repair it in an authorized service workshop.

Spare parts are available for the period of five years from the date of purchase.

**Our policy is one of continuous improvement and we reserve the right to make changes in design and specifications of any products as engineering advances or necessity requires and revise the above specifications without notice.**



## **SALES PROGRAMME**

- DIGITAL and BARGRAPH PANEL METERS
- MEASURING TRANSDUCERS
- ANALOG PANEL METERS (DIN INSTRUMENTS)
- ANALOG and DIGITAL CLAMP-ON METERS
- INDUSTRIAL and HOUSEHOLD CONTROLLERS
- CHART AND PAPERLESS RECORDERS
- POWER CONTROL UNITS and INVERTERS
- AUTOMOTIVE DASHBOARD INDICATORS
- ACCESSORIES FOR MEASURING INSTRUMENTS
- MEASURING SYSTEMS (ENERGY, HEAT, CONTROL)
- CUSTOM-MADE PRODUCTS

## ***MEASUREMENT CONTROL RECORDING***

### **WE ALSO OFFER OUR SERVICES IN THE PRODUCTION OF:**

- ALUMINIUM ALLOY PRESSURE CASTINGS
- PRECISION ENGINEERING AND THERMOPLASTICS PARTS

### **QUALITY PROCEDURES:**

According to ISO 9001 and ISO 14001 international requirements.

All our instruments have CE mark.

For more information, please write to or phone our Export Department.



**Lubuskie Zakłady Aparatów Elektrycznych LUMEL S.A.**

ul. Sulechowska 1, 65-022 Zielona Góra, Poland

Tel.: (48-68) 3295 100 (exchange)

Fax: (48-68) 3295 101

e-mail: [lumel@lumel.com.pl](mailto:lumel@lumel.com.pl)

<http://www.lumel.com.pl>

### **Export Department:**

Tel.: (48-68) 3295 302 or 304

Fax: (48-68) 3254 091

e-mail: [export@lumel.com.pl](mailto:export@lumel.com.pl)