

Description

BP5132H is a high current precision Linear LED Driver, It can be used in TRIAC dimmable LED driver, integrated with High Voltage regulation switchers and JFET supply, specially designed for AC line LED strings forwarded with high voltage and low current.

In application, it supports a quite small BOM benefit from no ECAP and no Magnetics, compile with EMI and safety standard.

BP5132H can drive precision constant current by option of an external resistor, and set up the LED strings in group linear compile with THD performance. Typical 40mA LED current is optimized for 220V line voltage.

Features

- ◆ High integration, all SMTs in small size.
- ◆ No ECAPs and magnetics
- ◆ Integrated with 500V HV MOS, saved on safety components.
- ◆ Fast startup
- ◆ LED current set by external resistors with $\pm 5\%$ accuracy.
- ◆ On chip thermal regulation.
- ◆ Compensation for line regulation
- ◆ In ESOP8 package.

Application

- ◆ GU10/E27 LED retrofit lamps
- ◆ LED candle
- ◆ Other LED lighting

Typical Application

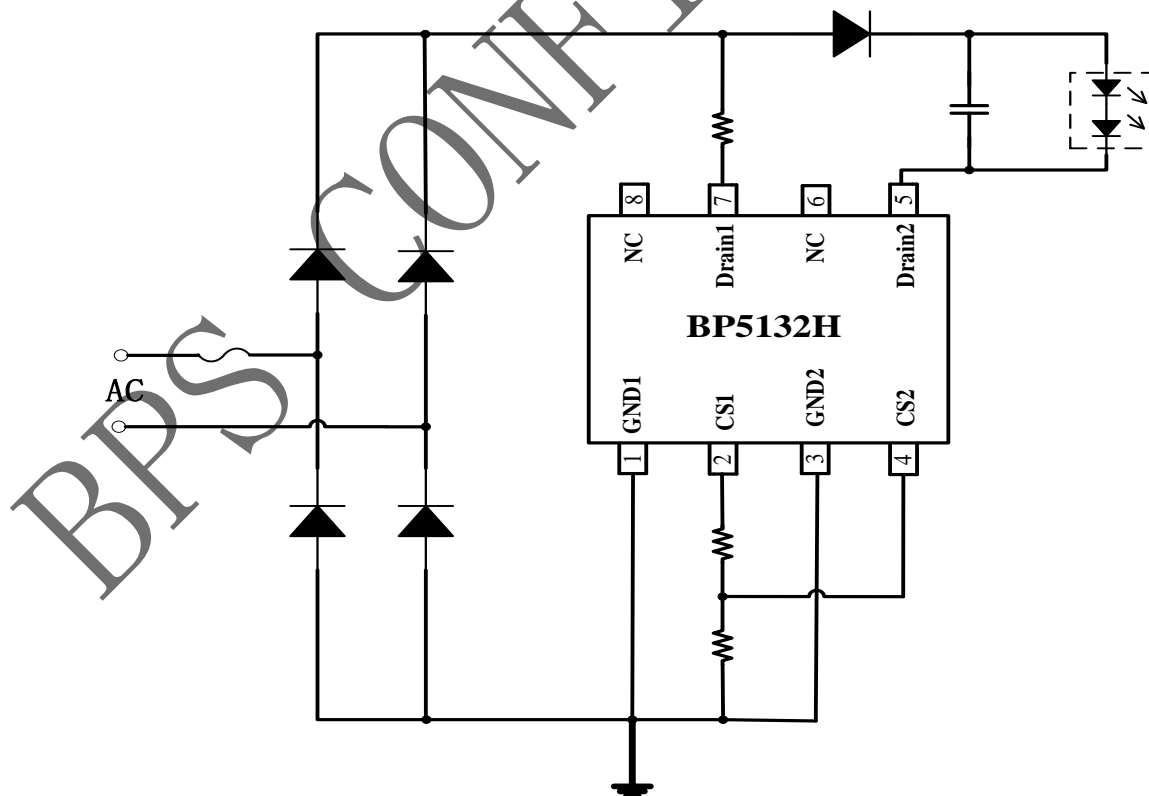


Fig.1 BP5132H Typical Application



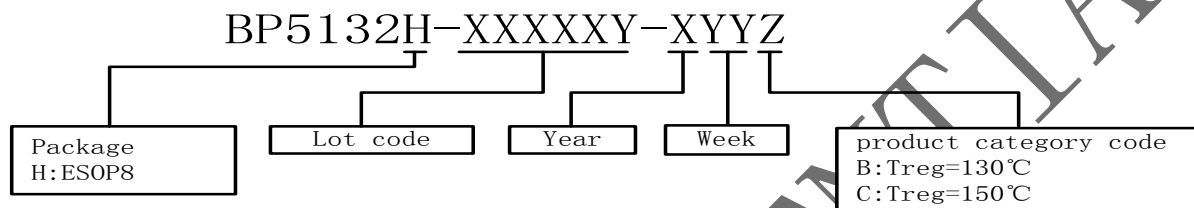
晶丰明源半导体

BP5132H

Mains Dimmable Liner LED Driver

Order Information

Part Number	Package	Temperature	Thermal Regulation	Packing Method	Mark
BP5132HB	ESOP8	-40 °C to 105 °C	T _{REG} : 130 °C	Tape: 4000 pcs/reel 2 reels/box	BP5132H XXXXXY XXYYB
BP5132HC	ESOP8	-40 °C to 105 °C	T _{REG} : 150 °C	Tape: 4000 pcs/reel 2 reels/box	BP5132H XXXXXY XXYYC



Pin mapping

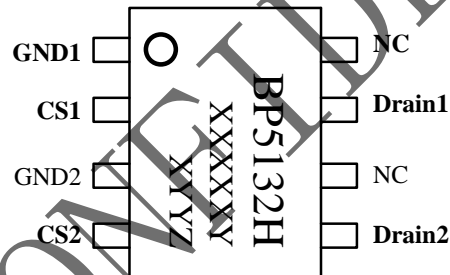


Fig 2 BP5132H Pin Mapping

Pin Descriptions

Pin No.	Pin Name	Descriptions
1	GND1	IC ground 1
2	CS1	Current sense 1, connect the current sense resistor to GND1
3	GND2	IC ground 2
4	CS2	Current sense 2, connect the current sense resistor to GND2
5	Drain2	Drain2 for LED string
6,8	NC	Not connect
7	Drain1	Drain1 for LED string