

AN2125FHS

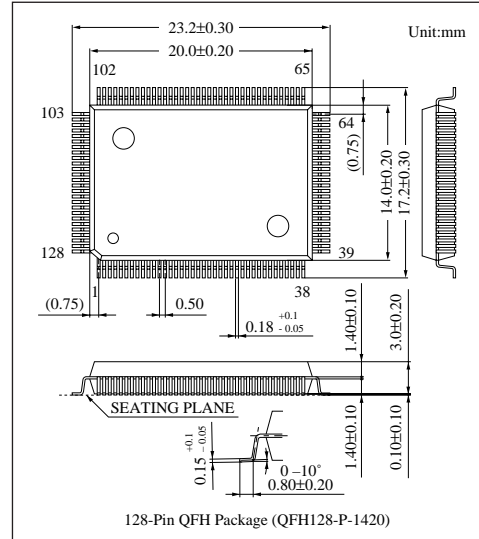
NTSC/PAL signal processor IC for 510H color CCD camera

■ Overview

The AN2125FHS is a CCD camera video signal processor IC featuring luminance and color-difference signals processing, and encoding, Y/C mixing, 75-Ω driver output, and subcarrier generation. It also includes an automatic white balance control circuit, an operational amplifier for AGC, a DAC for adjustment, and a circuit that automatically reads the EEPROM at the instance of power-on. Together with only an external EEPROM, you can make all signal processing system without a microprocessor.

■ Features

- Supports 510H CCDs (250,000 pixels)
- Compatible with both NTSC and PAL
- Built-in FH lock system for subcarrier generation
- Built-in automatic EEPROM read-in circuit at power-on instance.
- Built-in adjustment DAC (8 bits, 32 channels)
- Built-in external synchronization circuit
- Built-in comparator to provide for an electronic iris



■ Absolute Maximum Ratings

Parameter	Symbol	Rating	Unit
Supply voltage	V_{CC}	$V_{CC1}=5.5$	V
Supply current	I_{CC}	$I_{CC1(156)}=170$	mA
Power dissipation ^{Note 2)}	P_D	876	mW
Operating ambient temperature ^{Note 1)}	T_{opr}	-20 to +70	°C
Storage temperature ^{Note 1)}	T_{stg}	-55 to +150	°C

Note 1) $T_a=25^{\circ}\text{C}$ for other than operating ambient and storage temperatures.

Note 2) Allowable power dissipation of the package at $T_a=70^{\circ}\text{C}$.

■ Recommended Operating Range ($T_a=25^{\circ}\text{C}$)

Parameter	Symbol	Range
Operating supply voltage range	V_{CC}	4.5 to 5.1V