

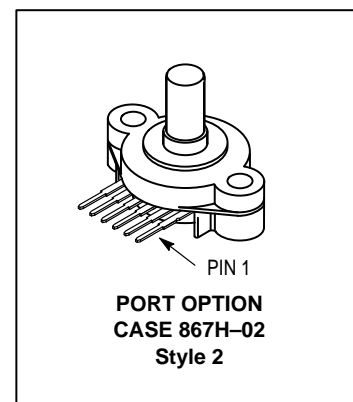
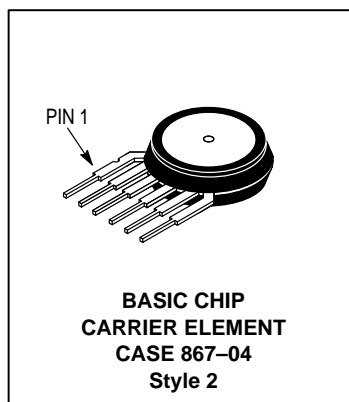
0 to 6 kPa Uncompensated, Silicon Pressure Sensors

The MPX906D series device is a silicon piezoresistive pressure sensor providing a very accurate and linear voltage output — directly proportional to the applied pressure. This standard, low cost, uncompensated pressure sensor permits manufacturers to design and add their own external temperature compensating and signal conditioning networks. Compensation techniques are simplified because of the predictability of Motorola's single element strain gauge design.

It is designed for applications exposing the pressure (P2) side of the device to water, water vapor and soapy water vapor.

Features

- Low Cost
- Patented Silicon Shear Stress Strain Gauge Design
- 2% (Max) Linearity
- Ratiometric to Supply Voltage
- Durable Epoxy Unibody Element
- Water Vapor Compatible — 0 to 600 mmH2O



Pin Number					
1	2	3	4	5	6
N/C	Ground	-V _{out}	V _S	+V _{out}	N/C

MAXIMUM RATINGS (T_C = 25°C unless otherwise noted)

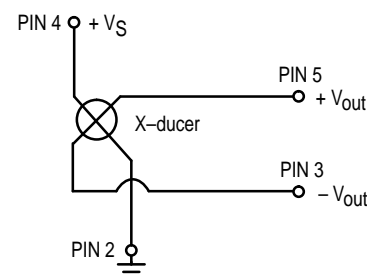
Rating	Symbol	Value	Unit
Overpressure ⁽⁸⁾ (P1 > P2)	P _{max1}	100	kPa
Overpressure ⁽⁸⁾ (P2 > P1)	P _{max2}	10	kPa
Storage Temperature	T _{stg}	-40 to +125	°C
Operating Temperature	T _A	-40 to +125	°C

VOLTAGE OUTPUT versus APPLIED DIFFERENTIAL PRESSURE

The differential voltage output of the X-ducer is directly proportional to the differential pressure applied.

The output voltage of the sensor increases with increasing pressure applied to the (P2) side relative to the ambient side (P1).

Figure 1 shows a schematic of the internal circuitry on the stand-alone pressure sensor chip.



**Figure 1. MPX906 Pressure
Sensor Schematic**

X-ducer is a trademark of Motorola, Inc.

MPX906 SERIES

OPERATING CHARACTERISTICS ($V_S = 3.0$ Vdc, $T_A = 25^\circ\text{C}$ unless otherwise noted)

Characteristic	Symbol	Min	Typ	Max	Unit
Pressure Range ⁽¹⁾	P _{OP}	0	—	6.0	kPa
Supply Voltage ⁽²⁾	V _S	—	3.0	6.0	Vdc
Supply Current	I _O	—	6.0	—	mAdc
Full Scale Span ⁽³⁾	V _{FSS}	9.0	20	32	mV
Offset ⁽⁴⁾	V _{off}	−40	−20	0	mV
Sensitivity	V/P	—	3.3	—	mV/kPa
Linearity ⁽⁵⁾	—	−0.5	—	2.0	%V _{FSS}
Pressure Hysteresis (0 to 6 kPa) ⁽⁵⁾	—	—	0.1	—	%V _{FSS}
Temperature Hysteresis (0°C to +85°C) ⁽⁵⁾	—	—	± 0.5	—	%V _{FSS}
Temperature Coefficient of Full Scale Span ⁽⁵⁾	TCV _{FSS}	−0.22	—	−0.16	%V _{FSS} /°C
Temperature Coefficient of Offset ⁽⁵⁾	TCV _{off}	—	−18	—	μV/°C
Temperature Coefficient of Resistance ⁽⁵⁾	TCR	0.25	0.30	0.35	%Z _{in} /°C
Input Impedance	Z _{in}	400	—	550	Ω
Output Impedance	Z _{out}	750	—	1875	Ω
Response Time (10% to 90%) ⁽⁶⁾	t _R	—	1.0	—	ms
Offset Stability ⁽⁵⁾	—	—	±0.5	—	%V _{FSS}

MECHANICAL CHARACTERISTICS

Characteristic	Symbol	Min	Typ	Max	Unit
Weight (Basic Element, Case 867)	—	—	4.0	—	Grams
Warm-Up	—	—	15	—	Sec
Cavity Volume	—	—	—	0.01	IN ³
Volumetric Displacement	—	—	—	0.001	IN ³

NOTES:

- 1.0 kPa (kiloPascal) equals 0.145 psi.
- Device is ratiometric within this specified excitation range. Operating the device above the specified excitation range may induce additional error due to device self-heating.
- Full Scale Span (V_{FSS}) is defined as the algebraic difference between the output voltage at full rated pressure and the output voltage at the minimum rated pressure.
- Offset (V_{off}) is defined as the output voltage at the minimum rated pressure.
- Accuracy (error budget) consists of the following:
 - Linearity: Output deviation from a straight line relationship with pressure, using end point method, over the specified pressure range.
 - Temperature Hysteresis: Output deviation at any temperature within the operating temperature range, after the temperature is cycled to and from the minimum or maximum operating temperature points, with zero differential pressure applied.
 - Pressure Hysteresis: Output deviation at any pressure within the specified range, when this pressure is cycled to and from the minimum or maximum rated pressure, at 25°C.
 - Offset Stability: Output deviation, after 1000 temperature cycles, −40 to 125°C, and 1.5 million pressure cycles, with zero differential pressure applied.
 - TcSpan: Output deviation at full rated pressure over the temperature range of 0 to 85°C, relative to 25°C.
 - TcOffset: Output deviation with minimum rated pressure applied, over the temperature range of 0 to 85°C, relative to 25°C.
 - TCR: Z_{in} deviation with minimum rated pressure applied, over the temperature range of −40°C to +125°C, relative to 25°C.
- Response Time is defined as the time for the incremental change in the output to go from 10% to 90% of its final value when subjected to a specified step change in pressure.
- Common mode pressures beyond specified may result in leakage at the case-to-lead interface.
- Exposure beyond these limits may cause permanent damage or degradation to the device.

TEMPERATURE COMPENSATION

Figure 2 shows the output characteristics of the MPX906D series at 25°C.

The X-ducer piezoresistive pressure sensor element is a semiconductor device which gives an electrical output signal proportional to the pressure applied to the device. This device uses a unique transverse voltage diffused semiconductor strain gauge which is sensitive to stresses produced in a thin silicon diaphragm by the applied pressure.

Because this strain gauge is an integral part of the silicon diaphragm, there are no temperature effects due to differences in the thermal expansion of the strain gauge and the diaphragm, as are often encountered in bonded strain gauge pressure sensors. However, the properties of the strain gauge itself are temperature dependent, requiring that the device be temperature compensated if it is to be used over an extensive temperature range.

Temperature compensation and offset calibration can be achieved rather simply with additional resistive components.

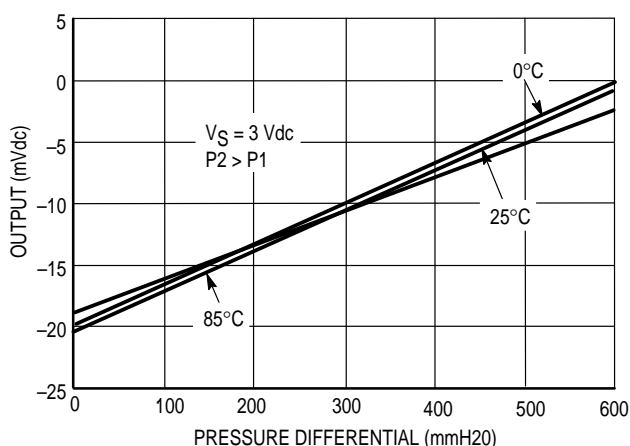


Figure 2. Output versus Pressure Differential

Several approaches to external temperature compensation over both -40 to +125°C and 0 to +80°C ranges are presented in Motorola Applications Note AN840.

LINEARITY

Linearity refers to how well a transducer's output follows the equation: $V_{out} = V_{off} + \text{sensitivity} \times P$ over the operating pressure range (Figure 3). There are two basic methods for calculating nonlinearity: (1) end point straight line fit or (2) a least squares best line fit. While a least squares fit gives the "best case" linearity error (lower numerical value), the calculations required are burdensome.

Conversely, an end point fit will give the "worst case" error (often more desirable in error budget calculations) and the calculations are more straightforward for the user. Motorola's specified pressure sensor linearities are based on the end point straight line method measured at the midrange pressure.

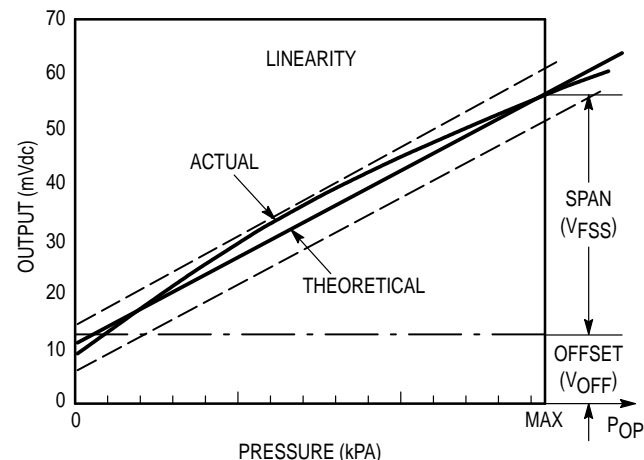


Figure 3. Linearity Specification Comparison

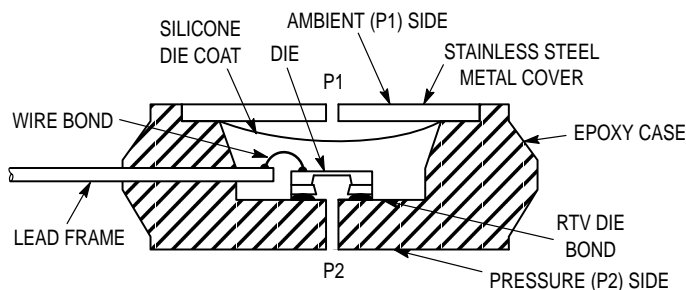


Figure 4. Cross-Sectional Diagram (not to scale)

MPX906 SERIES

SOAPY WATER VAPOR COMPATIBILITY

The compatibility of this product to Soapy Water Vapor has been verified by the reliability sample test method shown in Figure 5. Samples were tested with bias for 504 hours and

evaluated to specification after completion of this vapor exposure. Contact factory for details on liquid exposure compatibility testing.

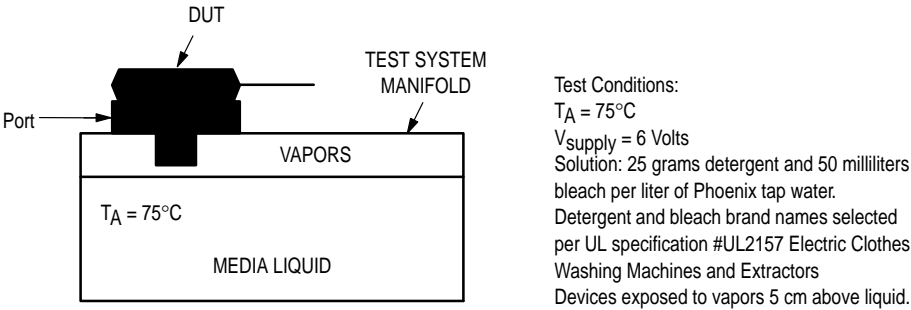


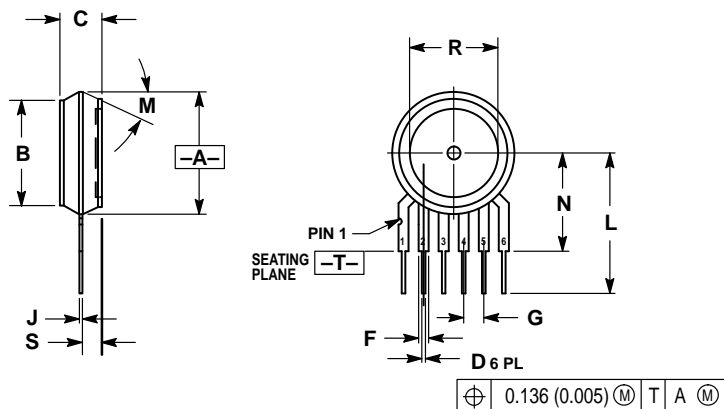
Figure 5. Vapor Test Method

ORDERING INFORMATION

MPX906D series pressure sensors are available in basic element or ported configurations, which provide printed circuit board mounting ease and barbed hose pressure connections.

Device Type	Options	Case Type	MPX Series	
			Order Number	Device Marking
Basic Element	Differential	Case 867-04	MPX906D	MPX906D
Ported Element	Gauge Axial	Case 867H-02	MPX906GVW	MPX906D

PACKAGE DIMENSIONS



NOTES:

9. DIMENSIONING AND TOLERANCING PER ANSI Y14.5M, 1982.
10. CONTROLLING DIMENSION: INCH.
11. DIMENSION -A- DOES NOT INCLUDE MOLDED FLASH RING. MOLDED FLASH RING NOT TO EXCEED 16.00 (0.630).

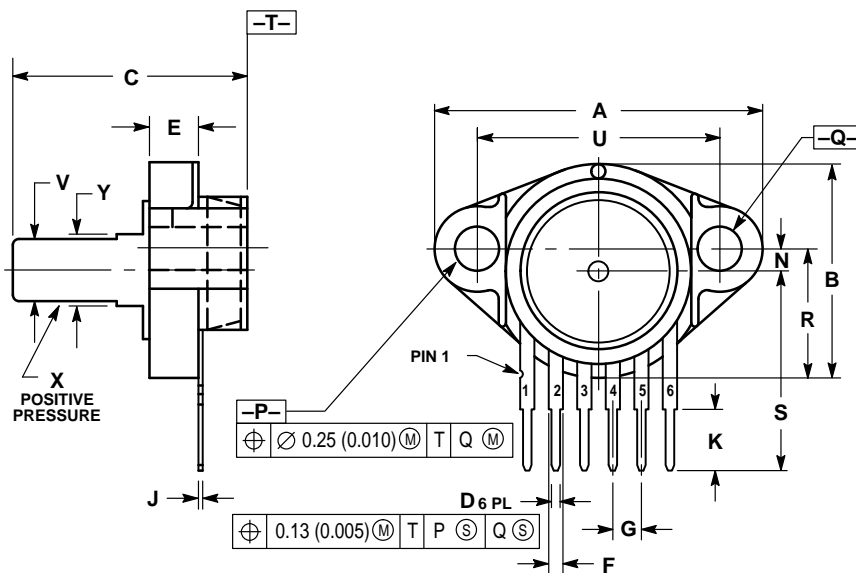
DIM	INCHES		MILLIMETERS	
	MIN	MAX	MIN	MAX
A	0.590	0.615	14.99	15.62
B	0.505	0.525	12.83	13.34
C	0.195	0.225	4.95	5.72
D	0.027	0.033	0.68	0.84
F	0.048	0.052	1.22	1.32
G	0.100 BSC		2.54 BSC	
J	0.014	0.016	0.36	0.40
L	0.685	0.715	17.40	18.16
M	30° NOM		30° NOM	
N	0.490	0.510	12.45	12.95
R	0.420	0.450	10.67	11.43
S	0.090	0.105	2.29	2.66

STYLE 2:

- PIN 1. OPEN
2. GROUND
3. -V_{OUT}
4. V_{SUPPLY}
5. +V_{OUT}
6. OPEN

CASE 867-04
ISSUE H

BASIC ELEMENT



NOTES:

1. DIMENSIONING AND TOLERANCING PER ANSI Y14.5M, 1982.
2. CONTROLLING DIMENSION: INCH

DIM	INCHES		MILLIMETERS	
	MIN	MAX	MIN	MAX
A	1.075	1.130	27.30	28.70
B	0.740	0.760	18.80	19.30
C	0.800	0.830	20.32	21.08
D	0.027	0.033	0.68	0.84
E	0.160	0.180	4.06	4.57
F	0.048	0.052	1.22	1.32
G	0.100 BSC		2.54 BSC	
J	0.014	0.016	0.36	0.40
K	0.220	0.240	5.59	6.10
N	0.065	0.085	1.65	2.16
P	0.150	0.160	3.81	4.06
Q	0.150	0.160	3.81	4.06
R	0.440	0.460	11.18	11.68
S	0.685	0.715	17.40	18.16
U	0.840	0.860	21.33	21.84
V	0.206	0.226	5.23	5.74
X	0.370	0.390	9.40	9.91
Y	0.240	0.260	6.10	6.60
Z	0.106	0.126	2.69	3.20

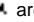
STYLE 2:

- PIN 1. NO CONNECT
2. GROUND
3. MINUS V OUT
4. V_{SUPPLY}
5. PLUS V OUT
6. NO CONNECT

CASE 867H-02
ISSUE O

PRESSURE SIDE PORTED (GVW)

MPX906 SERIES

Motorola reserves the right to make changes without further notice to any products herein. Motorola makes no warranty, representation or guarantee regarding the suitability of its products for any particular purpose, nor does Motorola assume any liability arising out of the application or use of any product or circuit, and specifically disclaims any and all liability, including without limitation consequential or incidental damages. "Typical" parameters can and do vary in different applications. All operating parameters, including "Typicals" must be validated for each customer application by customer's technical experts. Motorola does not convey any license under its patent rights nor the rights of others. Motorola products are not designed, intended, or authorized for use as components in systems intended for surgical implant into the body, or other applications intended to support or sustain life, or for any other application in which the failure of the Motorola product could create a situation where personal injury or death may occur. Should Buyer purchase or use Motorola products for any such unintended or unauthorized application, Buyer shall indemnify and hold Motorola and its officers, employees, subsidiaries, affiliates, and distributors harmless against all claims, costs, damages, and expenses, and reasonable attorney fees arising out of, directly or indirectly, any claim of personal injury or death associated with such unintended or unauthorized use, even if such claim alleges that Motorola was negligent regarding the design or manufacture of the part. Motorola and  are registered trademarks of Motorola, Inc. Motorola, Inc. is an Equal Opportunity/Affirmative Action Employer.

To order literature by mail:

USA/EUROPE: Motorola Literature Distribution; P.O. Box 20912; Phoenix, Arizona 85036.

JAPAN: Nippon Motorola Ltd.; 4-32-1, Nishi-Gotanda, Shinagawa-ku, Tokyo 141, Japan.

ASIA PACIFIC: Motorola Semiconductors H.K. Ltd.; Silicon Harbour Center, No. 2 Dai King Street, Tai Po Industrial Estate, Tai Po, N.T., Hong Kong.

To order literature electronically:

MFAX: RMFAX0@email.sps.mot.com-TOUCHTONE (602) 244-6609

INTERNET: <http://Design-NET.com>



MOTOROLA



MPX906/D

