

FEATURES

- 12-Bit ADC with $DNL = \pm 1$ LSB, $INL = \pm 2$ LSB
- $SNR > 60$ dB
- Sampling Frequency ≤ 2 MHz
- Internal Track and Hold: Input -3 dB Frequency = 10 MHz
- Single 5 V Supply
- Rail-to-Rail Input Range
- V_{REF} Range: 1.5 V to V_{DD}
- CMOS Low Power: 175 mW (typ)
- 1/4, 1/2 and 3/4 Scale Reference Resistor Taps
- Three-State Outputs
- Binary and Two's Complement Digital Output Mode
- Latch-Up Proof
- Serial Version: MP87092
- 3 V Version: MP87L91

APPLICATIONS

- Instrumentation
- DAS
- Radar
- Medical Imaging
- Ultrasound
- Broadcast and Studio Video
- Magnetic Resonance Signal Acquisition
- Digital Oscilloscopes
- Spectrum Analysis

GENERAL DESCRIPTION

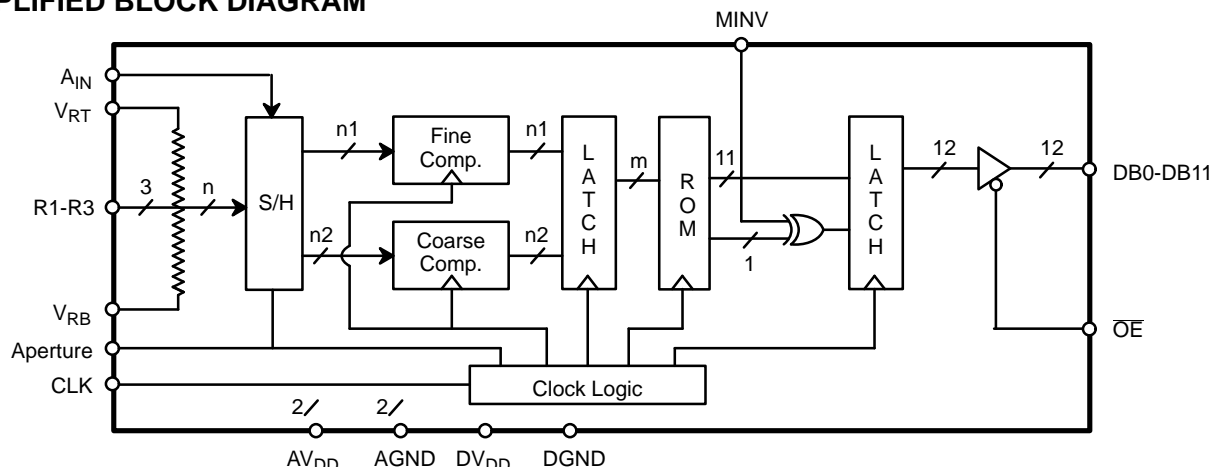
The MP8791 is a 2 MSPS 12-bit subranging Analog-to-Digital Converter with $DNL = \pm 1$ LSB and $INL = \pm 2$ LSB. The MP8791 contains an internal track and hold and an analog input bandwidth of 10 MHz.

The MP8791 operates with a single 5 V supply while consuming less than 200 mW of power (typical). Separate pins for reference ladder terminals and power supplies allow

flexibility for various A_{IN} , ΔV_{REF} , and power supply ranges.

Data is presented at the parallel output port every clock cycle after a 2.5 cycle pipeline delay from sample edge. The digital output port is also equipped with a 3-state function. MINV enables binary and 2's complement data formatting. Through pins R1-R3, transfer function adjustment, linearity, and speed enhancement can be accommodated.

SIMPLIFIED BLOCK DIAGRAM

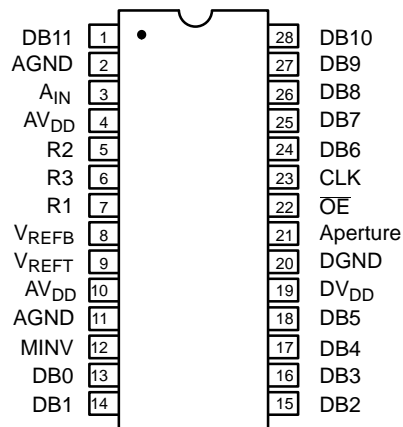


ORDERING INFORMATION

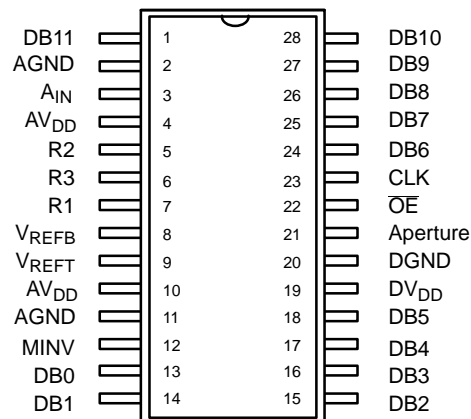
Package Type	Temperature Range	Part No.	DNL (LSB)	INL (LSB)
PDIP	-40 to +85°C	MP8791AN	±1	2 1/2
SOIC	-40 to +85°C	MP8791AS	±1	2 1/2

PIN CONFIGURATIONS

See Packaging Section for Package Dimensions



28 Pin PDIP (0.600")
N28



28 Pin SOIC (EIAJ, 0.335")
R28

Contact Factory for Availability of Smaller
PDIP Packages

PIN OUT DEFINITIONS

PIN NO.	NAME	DESCRIPTION
1	DB11	Data Output Bit 11 (MSB)
2	AGND	Analog Ground
3	A _{IN}	Analog Input
4	AV _{DD}	Analog Positive Supply
5	R2	Ref. Resistor Ladder Tap (1/2 V _{REF})
6	R3	Ref. Resistor Ladder Tap (3/4 V _{REF})
7	R1	Ref. Resistor Ladder Tap (1/4 V _{REF})
8	V _{REFB}	Negative Reference
9	V _{REFT}	Positive Reference
10	AV _{DD}	Analog Positive Supply
11	AGND	Analog Ground
12	MINV	Invert MSB (Active High)
13	DB0	Data Output Bit 0 (LSB)
14	DB1	Data Output Bit 1

PIN NO.	NAME	DESCRIPTION
15	DB2	Data Output Bit 2
16	DB3	Data Output Bit 3
17	DB4	Data Output Bit 4
18	DB5	Data Output Bit 5
19	DV _{DD}	Digital Positive Supply
20	DGND	Digital Negative Supply
21	Aperture	Delayed Clock, indicates sample point
22	OE	Output Enable (Active Low)
23	CLK	Clock
24	DB6	Data Output Bit 6
25	DB7	Data Output Bit 7
26	DB8	Data Output Bit 8
27	DB9	Data Output Bit 9
28	DB10	Data Output Bit 10

ELECTRICAL CHARACTERISTICS TABLE

Unless Otherwise Specified: $V_{DD} = DV_{DD} = 5\text{ V}$, $FS = 2\text{ MHz}$ (50% Duty Cycle),

$V_{REF(+)} = 5.0\text{ V}$, $V_{REF(-)} = AGND$, $TA = 25^{\circ}\text{C}$

Parameter	Symbol	Min	25°C Typ	Max	Units	Test Conditions/Comments
KEY FEATURES						
Resolution			12		Bits	
Sampling Rate	FS			2	MHz	
ACCURACY¹						
Differential Non-Linearity	DNL			±1	LSB	Best Fit Line (Max INL – Min INL)/2
Integral Non-Linearity	INL			±3	LSB	
Zero Scale Error	EZS		+20		LSB	
Full Scale Error	EFS		–20		LSB	
REFERENCE VOLTAGES						
Positive Ref. Voltage	V _{REF(+)}	1.5		AV _{DD}	V	
Negative Ref. Voltage	V _{REF(–)}	AGND			V	
Differential Ref. Voltage ³	V _{REF}	1.5		AV _{DD}	V	
Ladder Resistance	R _L		550		Ω	
ANALOG INPUT						
Input Bandwidth (–3 dB) ⁴	BW		10		MHz	Aperture pin load 5 pF. Measured at 50% point.
Input Voltage Range	V _{IN}	V _{REF(–)}		V _{REF(+)}	V p-p	
Input Capacitance Sample ⁵	C _{IN}		50		pF	
Input Capacitance Convert ⁵			8		pF	
Aperture Delay from Clock	t _{AP}		35	40	ns	
Aperture Delay from Aperture Signal	t _{AP}		0		ns	
DIGITAL INPUTS						
Logical “1” Voltage	V _{IH}		2.4		V	V _{IN} =DGND to DV _{DD}
Logical “0” Voltage	V _{IL}		0.8		V	
Leakage Currents ⁶ CLK, \overline{OE} , MINV	I _{IN}		10		μA	
Input Capacitance			5		pF	
Clock Timing						
Clock Period	t _S	200	500		ns	Functional
Rise & Fall Time ⁷	t _R , t _F		15		ns	Functional
“High” Time	t _{PWH}	100	220		ns	Functional
“Low” Time	t _{PWL}	100	220		ns	Functional
Duty Cycle			50		%	
DIGITAL OUTPUTS						
Logical “1” Voltage	V _{OH}	V _{DD} -0.5			V	C _{OUT} =15 pF I _{LOAD} = 4 mA I _{LOAD} = 4 mA V _{OUT} =DGND to DV _{DD}
Logical “0” Voltage	V _{OL}			0.5	V	
3-state Leakage	I _{OZ}		1		μA	
Data Valid Delay	t _{DL}	28	30	35	ns	
Data Enable Delay	t _{DEN}		25	30	ns	
Data 3-state Delay	t _{DHZ}		25	30	ns	

ELECTRICAL CHARACTERISTICS TABLE (CONT'D)

Parameter	Symbol	Min	25°C Typ	Max	Units	Test Conditions/Comments
POWER SUPPLIES⁸ (T _{min} to T _{max})						
Operating Voltage (AV _{DD} , DV _{DD})	V _{DD}		5		V	
Current (AV _{DD} + DV _{DD})	I _{DD}			45	mA	
AC PARAMETERS						
Signal Noise Ratio (N+D)	SNR		66		dB	

NOTES

- ¹ Tester measures code transitions by dithering the voltage of the analog input (V_{IN}). The difference between the measured and the ideal code width (V_{REF}/4096) is the DNL error. The INL error is the maximum distance (in LSBs) from the best fit line to any transition voltage. Accuracy is a function of the sampling rate (FS).
- ² Guaranteed. Not tested.
- ³ Specified values guarantee functionality. Refer to other parameters for accuracy.
- ⁴ -3 dB bandwidth is a measure of performance of the A/D input stage (S/H + amplifier). Refer to other parameters for accuracy within the specified bandwidth.
- ⁵ Switched capacitor analog input requires driver with low output resistance.
- ⁶ All inputs have diodes to DV_{DD} and DGND. Input(s) \overline{OE} and MINV have internal pull down(s). Input DC currents will not exceed specified limits for any input voltage between DGND and DV_{DD}.
- ⁷ Condition to meet aperture delay specifications (t_{AP}, t_{AJ}). Actual rise/fall time can be less stringent with no loss of accuracy.
- ⁸ AGND & DGND pins are connected through the silicon substrate.

Specifications are subject to change without notice

ABSOLUTE MAXIMUM RATINGS (T_A = +25°C unless otherwise noted)^{1, 2, 3}

V _{DD} to GND	7 V	Storage Temperature	-65 to +150°C
V _{REF} (+) & V _{REF} (-)	V _{DD} +0.5 to GND -0.5 V	Lead Temperature (Soldering 10 seconds)	+300°C
V _{IN}	V _{DD} +0.5 to GND -0.5 V	Package Power Dissipation Rating @ 75°C	
All Inputs	V _{DD} +0.5 to GND -0.5 V	PQFP	450mW
All Outputs	V _{DD} +0.5 to GND -0.5 V	Derates above 75°C	6mW/°C

NOTES:

- ¹ Stresses above those listed under "Absolute Maximum Ratings" may cause permanent damage to the device. This is a stress rating only and functional operation at or above this specification is not implied. Exposure to maximum rating conditions for extended periods may affect device reliability.
- ² Any input pin which can see a value outside the absolute maximum ratings should be protected by Schottky diode clamps (HP5082-2835) from input pin to the supplies. *All inputs have protection diodes* which will protect the device from short transients outside the supplies of less than 100mA for less than 100μs.
- ³ V_{DD} refers to AV_{DD} and DV_{DD}. GND refers to AGND and DGND.

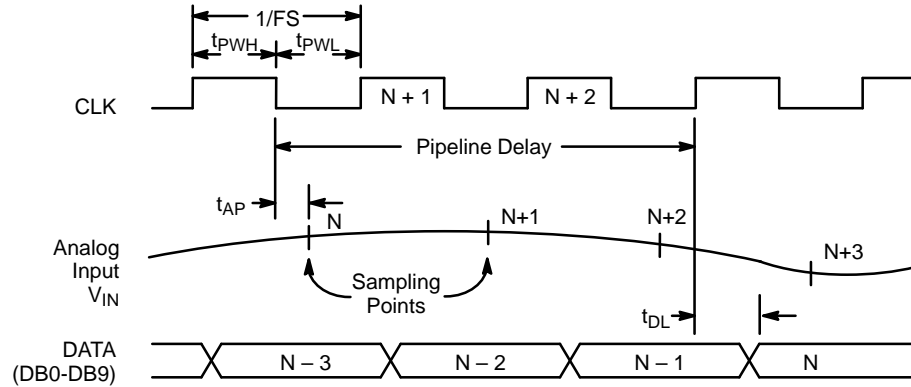


Figure 1. Timing Diagram

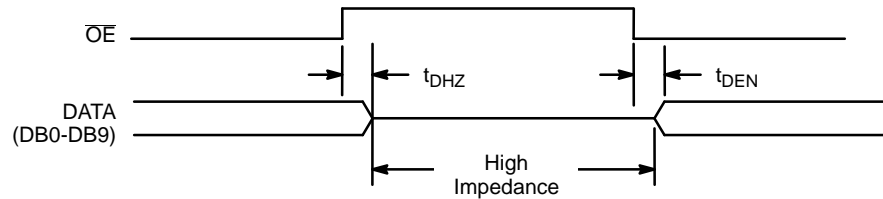


Figure 2. 3-State Timing Diagram

OVERVIEW OF THE MP8791 PINS & OPERATION NOTES :

\overline{OE} : Output Enable (Input)

This signal controls the 3-state drivers on the digital outputs DB0 - DB11. During normal operation, \overline{OE} should be held low so that all outputs are enabled (NOTE: an internal resistor will pull \overline{OE} to this level if it is not connected). When \overline{OE} is driven high, DB0 - DB11 goes into high impedance mode. This control operates asynchronously to the clock and only controls the output drivers. The internal output register will get updated if the clock is running while the outputs are in 3-state mode. If possible, \overline{OE} should be in 3-state during Clock = 1 to reduce digital noise coupling into A_{IN} during the sample time. Aperture provides a convenient control for this purpose since it guarantees that the A_{IN} sample period is complete when the outputs are enabled.

APERTURE: Aperture Delay Sync (Output)

This signal is high when the internal sample/hold function is sampling V_{IN} , and goes low when it is in the hold mode (when the ADC is comparing the stored input value to the reference ladder). The value of V_{IN} at the high to low transition of APERTURE

is the value that will be digitized. A system can monitor this signal and adjust the CLK to accurately synchronize the sampling point to an external event. The Aperture pin may also be used to control the \overline{OE} (outputs between 3-state and active mode). This will reduce the errors introduced by digital output coupling during the A_{IN} sample time.

MINV: Digital Output Format (Input)

This signal controls the format of the digital output data bits DB0 - DB11. Normally it is held low so the data is in straight binary format (all 0's when $V_{IN} = V_{RB}$; all 1's when $V_{IN} = V_{RT}$). If MINV is pulled high then the MSB (DB11) will be inverted.

MINV is meant to be a static digital signal. If it is to change during operation, it should only change when the CLK is low. Changing MINV on the wrong phase of the CLK will not hurt anything, but the effects on the digital outputs will not be seen until the output latch of the output register is enabled. MINV has an internal pull down device. This function is not available in the engineering sidebrazes samples. For these samples, this pin must be tied to GND.



This part has a switched capacitor type input circuit. This means that the input impedance changes with the phase of the input clock. V_{IN} is sampled at the high to low clock transition. The diagram *Figure 4*, shows an equivalent input circuit.



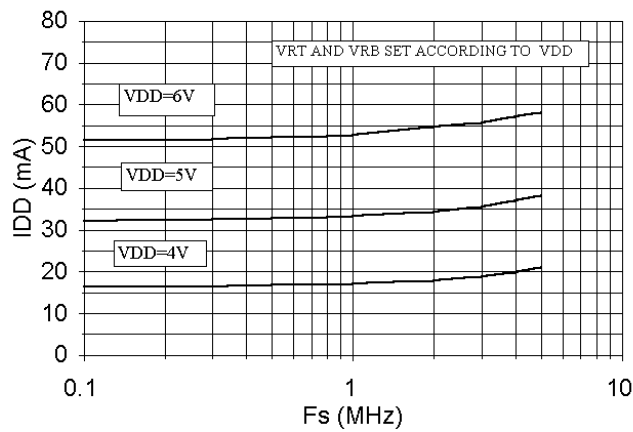
Sometimes this is referred to as probability density function shaping, or histogram shaping.

Figure 5. A Piecewise Linear Transfer Function

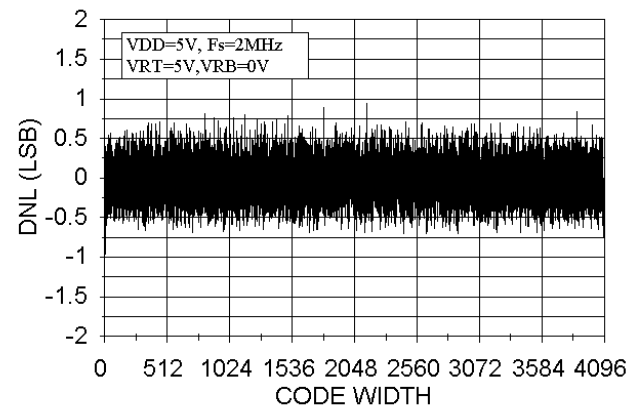


Figure 6. A/D with Programmed Ladder Control for Creating a Piecewise Linear Transfer Function

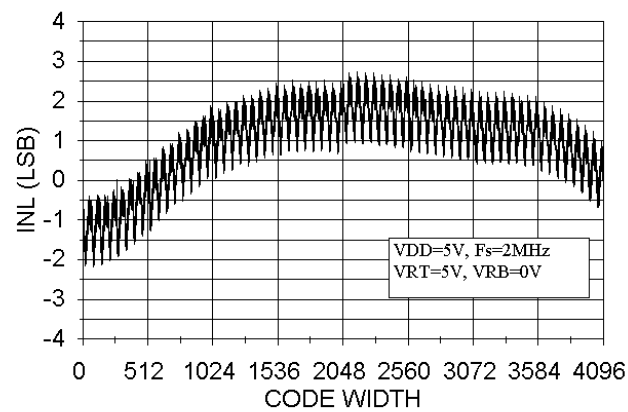
PERFORMANCE CHARACTERISTICS



Graph 1. I_{DD} vs. F_s

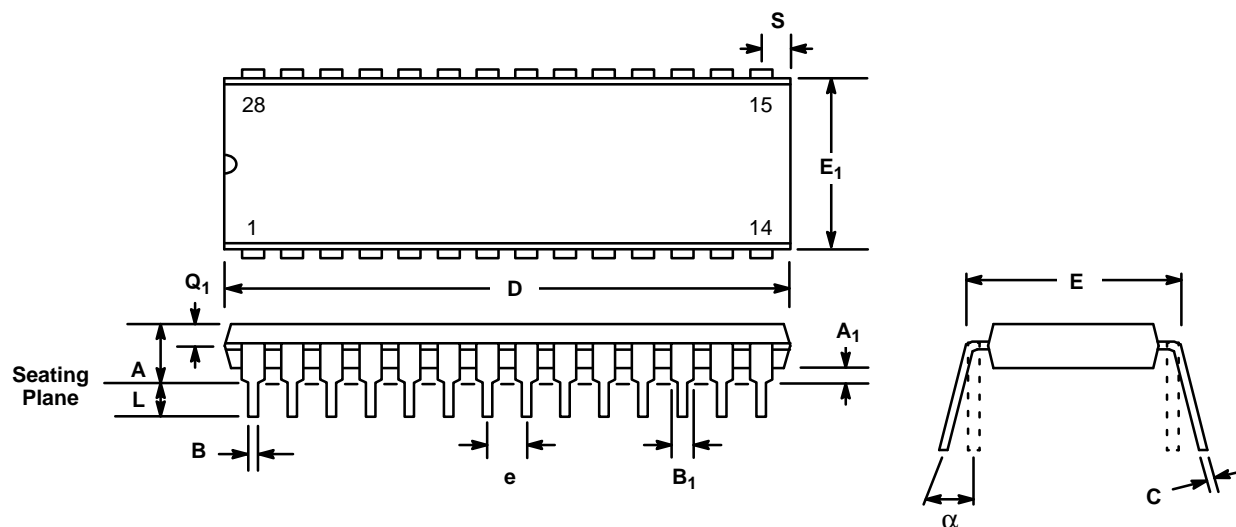


Graph 2. DNL Error Plot



Graph 3. INL Error Plot

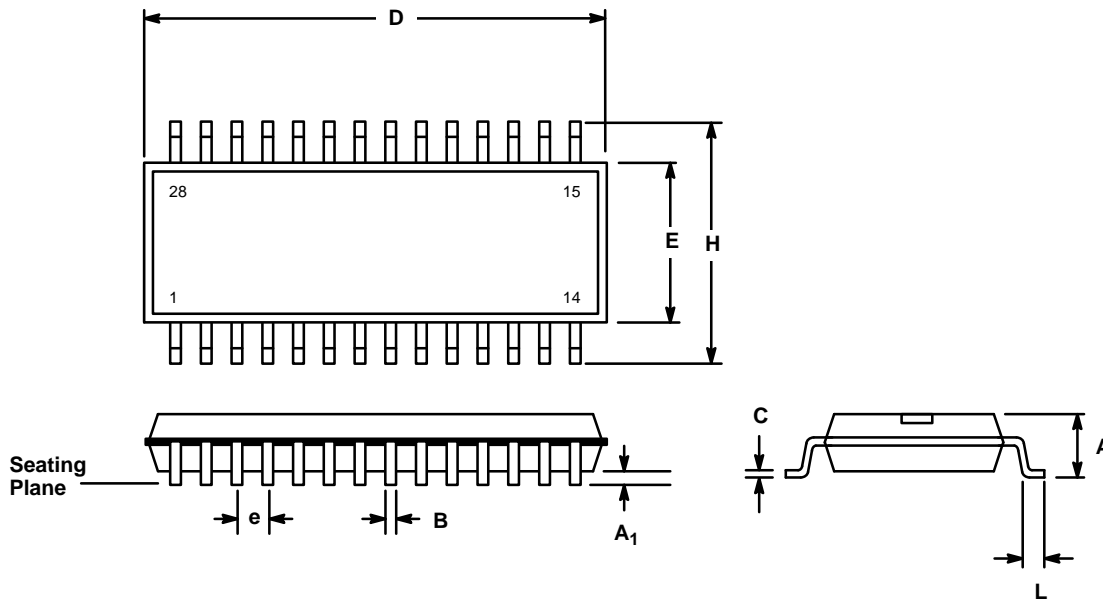
28 LEAD PLASTIC DUAL-IN-LINE
(600 MIL PDIP)
N28



SYMBOL	INCHES		MILLIMETERS	
	MIN	MAX	MIN	MAX
A	—	0.232	—	5.893
A ₁	0.015	—	0.381	—
B	0.014	0.023	0.356	0.584
B ₁ (1)	0.038	0.065	0.965	1.65
C	0.008	0.015	0.203	0.381
D	1.380	1.490	35.05	37.85
E	0.585	0.625	14.86	15.88
E ₁	0.500	0.610	12.70	15.49
e	0.100 BSC		2.54 BSC	
L	0.115	0.150	2.92	3.81
α	0°	15°	0°	15°
Q ₁	0.055	0.070	1.40	1.78
S	0.020	0.100	1.508	2.54

Note: (1) The minimum limit for dimensions B₁ may be 0.023" (0.58 mm) for all four corner leads only.

**28 LEAD SMALL OUTLINE
(335 MIL EIAJ SOIC)
R28**



SYMBOL	MILLIMETERS		INCHES	
	MIN	MAX	MIN	MAX
A	2.60	2.80	0.102	0.110
A ₁	0.2 (typ.)		0.008 (typ.)	
B	0.3	0.5	0.012	0.020
C	0.10	0.20	0.004	0.008
D	17.6	18.0	0.693	0.709
E	8.3	8.5	0.327	0.335
e	1.27 (typ.)		0.050 (typ.)	
H	11.5	12.1	0.453	0.477
L	0.8	1.2	0.031	0.047

Notes

Notes

NOTICE

EXAR Corporation reserves the right to make changes to the products contained in this publication in order to improve design, performance or reliability. EXAR Corporation assumes no responsibility for the use of any circuits described herein, conveys no license under any patent or other right, and makes no representation that the circuits are free of patent infringement. Charts and schedules contains here in are only for illustration purposes and may vary depending upon a user's specific application. While the information in this publication has been carefully checked; no responsibility, however, is assumed for inaccuracies.

EXAR Corporation does not recommend the use of any of its products in life support applications where the failure or malfunction of the product can reasonably be expected to cause failure of the life support system or to significantly affect its safety or effectiveness. Products are not authorized for use in such applications unless EXAR Corporation receives, in writing, assurances to its satisfaction that: (a) the risk of injury or damage has been minimized; (b) the user assumes all such risks; (c) potential liability of EXAR Corporation is adequately protected under the circumstances.

Copyright 1993 EXAR Corporation

Datasheet April 1995

Reproduction, in part or whole, without the prior written consent of EXAR Corporation is prohibited.