

MAXIM

Power-Supply Monitor with Reset

MAX700/701/702

General Description

The MAX700/701/702 are supervisory circuits used to monitor the power supplies in μ P and digital systems. The RESET/RESET outputs of the MAX700/701/702 are guaranteed to be in the correct state for VCC voltages down to +1V (Figure 4). They provide excellent circuit reliability and low cost by eliminating external components and adjustments when used with +5V powered circuits.

The MAX702 is the simplest part in the family. When VCC falls to 4.65V, RESET goes low. The MAX702 also provides a debounced manual reset input. The MAX701 performs the same functions but has both RESET and RESET outputs. Their primary function is to provide a system reset. Accordingly, an active reset signal is supplied for low supply voltages and for at least 200ms after the supply voltage reaches its operating value.

In addition to the features of the MAX701 and MAX702, the MAX700 provides preset or adjustable voltage detection so thresholds other than 4.65V can be selected, and adjustable hysteresis. All parts are supplied in 8-pin Plastic DIP and Narrow SO packages in commercial and extended temperature ranges.

Applications

Computers
Controllers
Intelligent Instruments
Automotive Systems
Critical μ P Power Monitoring

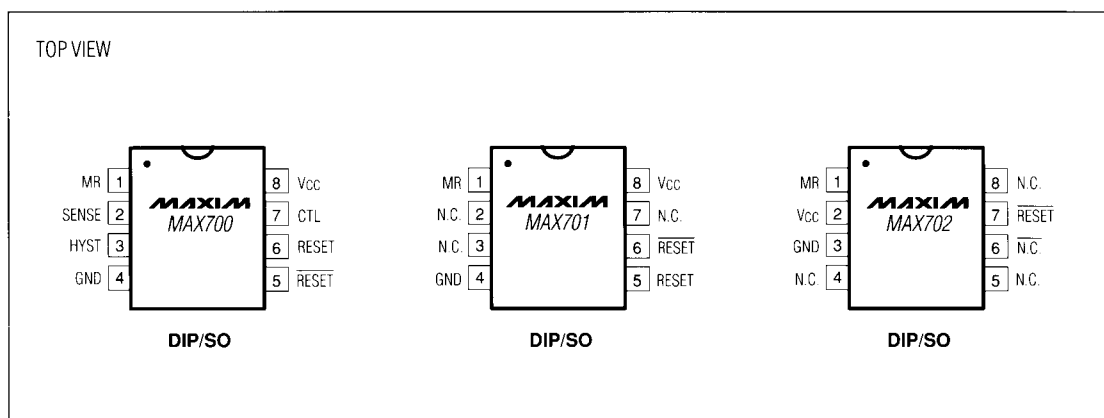
Features

- ◆ Min 200ms RESET Pulse on Power-Up, Power-Down, and During Low-Voltage Conditions
- ◆ Reset Threshold Factory Trimmed for +5V Systems
- ◆ No External Components or Adjustments With +5V Powered Circuits
- ◆ Debounced Manual Reset Input
- ◆ Preset or Adjustable Voltage Detection (MAX700)
- ◆ Adjustable Hysteresis (MAX700)
- ◆ 8-Pin Plastic DIP and Narrow SO Packages

Ordering Information

PART	TEMP. RANGE	PIN-PACKAGE
MAX700CPA	0°C to +70°C	8 Plastic DIP
MAX700CSA	0°C to +70°C	8 Narrow SO
MAX700C/D	0°C to +70°C	Dice
MAX700EPA	-40°C to +85°C	8 Plastic DIP
MAX700ESA	-40°C to +85°C	8 Narrow SO
MAX701CPA	0°C to +70°C	8 Plastic DIP
MAX701CSA	0°C to +70°C	8 Narrow SO
MAX701C/D	0°C to +70°C	Dice
MAX701EPA	-40°C to +85°C	8 Plastic DIP
MAX701ESA	-40°C to +85°C	8 Narrow SO
MAX702CPA	0°C to +70°C	8 Plastic DIP
MAX702CSA	0°C to +70°C	8 Narrow SO
MAX702C/D	0°C to +70°C	Dice
MAX702EPA	-40°C to +85°C	8 Plastic DIP
MAX702ESA	-40°C to +85°C	8 Narrow SO

Pin Configurations



MAXIM

Maxim Integrated Products 1

Call toll free 1-800-998-8800 for free samples or literature.

Power-Supply Monitor with Reset

ABSOLUTE MAXIMUM RATINGS

V _{CC}	-0.3V to +15.5V	Rate of Rise, V _{CC}	100V/μs
Voltage (with respect to GND) at RESET, RESET, HYST, CTL, SENSE	-0.3V to V _{CC}	Power Dissipation, any package	380mW
Operating Temperature Range	0°C to +70°C	Storage Temperature Range	-65°C to +150°C
MAX70_C	0°C to +70°C	Lead Temperature (Soldering, 10 sec.)	300°C
MAX70_E	-40°C to +85°C		

Stresses beyond those listed under "Absolute Maximum Ratings" may cause permanent damage to the device. These are stress ratings only, and functional operation of the device at these or any other conditions beyond those indicated in the operational sections of the specifications is not implied. Exposure to absolute maximum rating conditions for extended periods may affect the device reliability.

ELECTRICAL CHARACTERISTICS

(T_A = 25°C, V_{CC} = +5V, CTL = GND on MAX700, unless otherwise noted.)

PARAMETER	CONDITIONS	MIN	TYP	MAX	UNITS
V _{CC} Monitor Voltage Range MAX700 Only	T _A = T _{MIN} to T _{MAX} CTL = V _{CC}	3		15	V
Min V _{CC} For Valid Reset Output, Declining Supply	T _A = T _{MIN} to T _{MAX} RESET ≤ 0.4V when sinking 1mA	1.5	1		V
Supply Current			100	200	μA
Reset Threshold Power-up Power-down	T _A = T _{MIN} to T _{MAX}	4.5 4.5	4.65 4.62	4.75 4.75	V
Internal Hysteresis	HYST not connected		30		mV
Reset Output Pulse Width		200	350	500	ms
RESET Fall Time	MAX700/701 Only, C _{LOAD} = 100pF		200		ns
V _{CC} Pulse Duration Guaranteeing No Reset Reset	5V to 4V V _{CC} Pulse	100	10 10	1	μs
MR Input Threshold			0.7		V
MR Pullup Current			-5	-30	μA
MAX700					
RESET Output Low	I _{SINK} = 3.2mA, V _{CC} = 5V			0.4	V
RESET Output High	I _{SINK} = 1.6mA, V _{CC} = 3V			0.4	
	I _{SOURCE} = 3.2mA, V _{CC} = 4.25V	V _{CC} -0.4			
	I _{SOURCE} = 1.6mA, V _{CC} = 3V	V _{CC} -0.4			
	I _{SOURCE} = 0.5mA, V _{CC} = 1.5V	V _{CC} -0.4			
RESET Output Low	I _{SINK} = 16mA, V _{CC} = 4.25V			0.4	V
RESET Output High	I _{SINK} = 1.6mA, V _{CC} = 3V			0.4	
	I _{SINK} = 0.4mA, V _{CC} = 1.5V			0.4	
	I _{SOURCE} = 3.2mA, V _{CC} = 5V	V _{CC} -0.4			
	I _{SOURCE} = 1.6mA, V _{CC} = 3V	V _{CC} -0.4			
MAX701					
RESET Output Low RESET Output High	I _{SINK} = 16mA, V _{CC} = 5V I _{SOURCE} = 3.2mA, V _{CC} = 4.25V I _{SOURCE} = 1.6mA, V _{CC} = 3V I _{SOURCE} = 0.5mA, V _{CC} = 1.5V	V _{CC} -0.4 V _{CC} -0.4 V _{CC} -0.4		0.4	V
RESET Output Low	I _{SINK} = 3.2mA, V _{CC} = 4.25V			0.4	V
RESET Output High	I _{SINK} = 1.6mA, V _{CC} = 3V			0.4	
	I _{SINK} = 0.4mA, V _{CC} = 1.5V			0.4	
	I _{SOURCE} = 3.2mA, V _{CC} = 5V	V _{CC} -0.4			

Power-Supply Monitor with Reset

MAX700/701/702

ELECTRICAL CHARACTERISTICS (continued)

(T_A = 25°C, V_{CC} = +5V, CTL = GND on MAX700, unless otherwise noted.)

PARAMETER	CONDITIONS	MIN	TYP	MAX	UNITS
MAX702					
RESET Output Low	ISINK = 3.2mA, V _{CC} = 4.25V ISINK = 1.6mA, V _{CC} = 3V ISINK = 0.4mA, V _{CC} = 1.5V			0.4 0.4 0.4	V
RESET Output High	ISOURCE = 3.2mA, V _{CC} = 5V	V _{CC} -0.4			
MAX700 ONLY (CTL = V_{CC}, unless otherwise noted.)					
SENSE Input Threshold	T _A = T _{MIN} to T _{MAX}	1.25	1.29	1.35	V
SENSE Input Current			0.1		nA
HYST Input On Resistance			0.5		kΩ
CTL Input Threshold			2		V
CTL Pulldown Current			30	100	μA

Pin Description

NAME	FUNCTION
V _{CC}	Chip power and +5V sensing input (when CTL = GND on MAX700).
GND	Ground
RESET	Goes low when V _{CC} falls below 4.65V, or when CTL = V _{CC} on the MAX700 goes low when SENSE falls below 1.9V.
RESET	MAX700, 701 only – Inverted Version of RESET.
MR	Input for manual push button reset. Has internal 5μA pull up. Low input activates the RESET/RESET outputs.
CTL	MAX700 only – When CTL = GND, V _{CC} is monitored by the reset circuit. When CTL = V _{CC} , V _{CC} is ignored and SENSE is monitored, allowing the threshold to be set with external resistors.
HYST	MAX700 only – Normally NOT used when voltage is monitored through V _{CC} (CTL = GND). When monitoring through SENSE (CTL = V _{CC}), HYST allows hysteresis to be added, reducing noise and spurious reset activity (Figure 3). HYST turns on 5μs before the RESET/RESET outputs are activated, and its on resistance to GND is typically 1kΩ.
SENSE	MAX700 only – The voltage sense input when CTL = V _{CC} . Its threshold is 1.29V. Sense always remains connected to the internal comparator. So, when V _{CC} is being monitored internally (CTL = GND), SENSE should be left open circuit.

Power-Supply Monitor with Reset

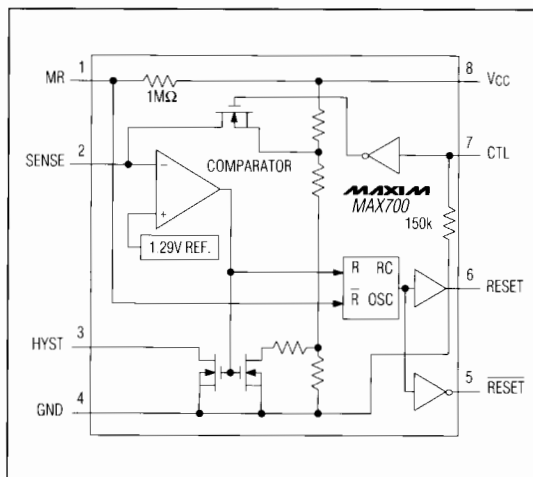


Figure 1. MAX700 Block Diagram

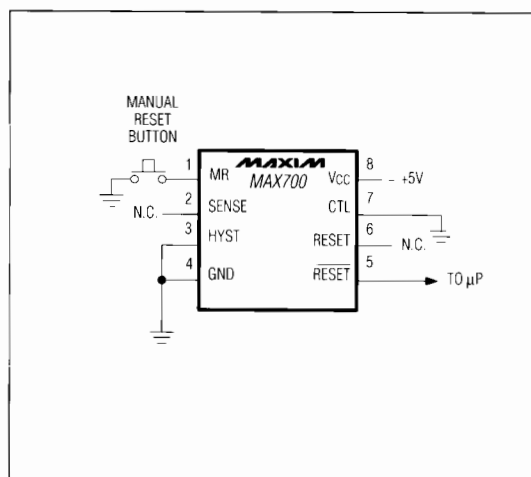


Figure 2. MAX700 Typical Connection Diagram

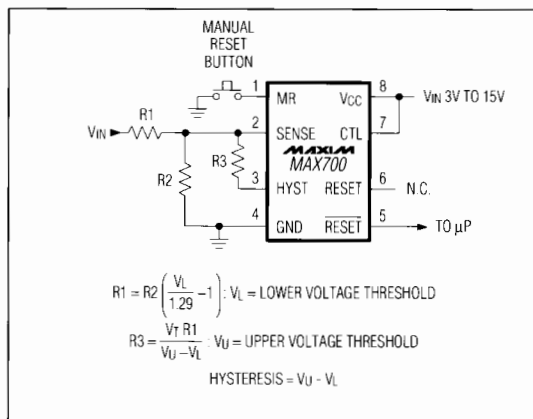


Figure 3. MAX700 Connected for External Sense and Hysteresis

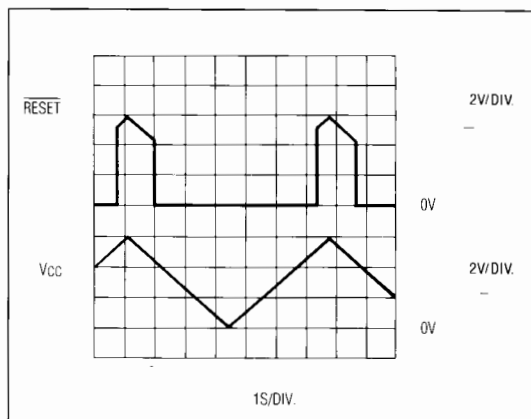


Figure 4. Typical MAX700/701/702 RESET Output vs. VCC

Figure 4 shows the RESET output of the MAX700/701/702 in the correct state for VCC voltages down to 0V. Note the effect of the built-in hysteresis on the trigger level of RESET.

Maxim cannot assume responsibility for use of any circuitry other than circuitry entirely embodied in a Maxim product. No circuit patent licenses are implied. Maxim reserves the right to change the circuitry and specifications without notice at any time.

Maxim Integrated Products, 120 San Gabriel Drive, Sunnyvale, CA 94086 (408) 737-7600

4

©1990 Maxim Integrated Products

Printed USA

MAXIM is a registered trademark of Maxim Integrated Products.