

Dual recording/playback preamplifier for radio cassette recorders

BA3420AL

The BA3420AL is dual recording / playback preamplifier for radio cassette players. It has an internal switch for switching between playback head, mic, and radio input modes, and also includes a bias oscillator and regulated voltage source for radio use.

All control is possible with one external switch, allowing designers to reduce the number of external components and the size of their set designs.

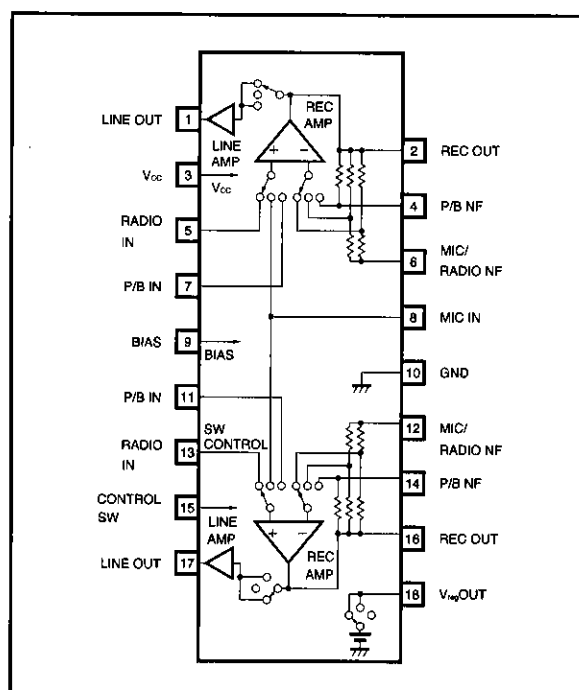
●Applications

Radio cassette players

●Features

- 1) Internal three-mode input / output switch for playback head, mic and radio modes.
- 2) Built-in bias oscillator and regulated voltage source for radio use.
- 3) Control of the internal switch and regulated voltage source is possible with one external switch.
- 4) Low distortion.
- 5) Low noise.

●Block diagram



●Absolute maximum ratings (Ta = 25°C)

Parameter	Symbol	Limits	Unit
Supply voltage	V _{CC}	18	V
Power dissipation	P _d	400*	mW
Operating temperature	T _{opr}	−25~75	°C
Storage temperature	T _{stg}	−55~125	°C

* Reduced by 4.0mW for each increase in Ta of 1°C over 25°C.

●Recommended operating conditions (Ta = 25°C)

Parameter	Symbol	Min.	Typ.	Max.	Unit
Supply voltage range	V _{CC}	5	—	16	V

Preamplifiers

Low-frequency amplifiers

●Electrical characteristics (unless otherwise specified Ta = 25°C, Vcc = 8.0V, f = 1kHz and test circuit : Fig. 1)

Parameter		Symbol	Min.	Typ.	Max.	Unit	Conditions
Quiescent current		I _Q	—	5.1	9.0	mA	V _{IN} =0V _{rms} P/B Mode
Voltage gain	P/B Line Amp	G _{vcPL}	43.0	45.0	47.0	dB	R _L =10kΩ, V _O =0dBm
	Mic Rec Amp	G _{vcMR}	49.5	51.5	53.5	dB	R _L =2kΩ, V _O =0dBm
	Radio Rec Amp	G _{vcRR}	32.0	34.0	36.0	dB	R _L =2kΩ, V _O =0dBm
	Radio Line Amp	G _{vcRL}	17.5	19.5	21.5	dB	R _L =10kΩ, V _O =-15dBm
Maximum output voltage	P/B Line Amp	V _{OMPL}	1.2	1.5	—	V _{rms}	THD=1%, R _L =10kΩ
	Mic Rec Amp	V _{OMMR}	1.1	1.4	—	V _{rms}	THD=1%, R _L =2kΩ
	Radio Rec Amp	V _{OMRR}	1.4	1.7	—	V _{rms}	THD=1%, R _L =2kΩ
	Radio Line Amp	V _{OMRL}	0.25	0.3	—	V _{rms}	THD=1%, R _L =10kΩ
Input noise-conversion voltage	P/B Amp	V _{NINP}	—	1.0	2.0	μV _{rms}	R _g =2.2kΩ, V _{IN} =0V _{rms} , BPF20~20kHz
	Mic Amp	V _{NINM}	—	1.2	2.2	μV _{rms}	R _g =2.2kΩ, V _{IN} =0V _{rms} , BPF20~20kHz
	Radio Amp	V _{NINR}	—	1.5	3.0	μV _{rms}	R _g =2.2kΩ, V _{IN} =0V _{rms} , BPF20~20kHz
Total harmonic distortion	P/B Line Amp	THD PL	—	0.05	0.45	%	V _O =0dBm, R _L =10kΩ
	Mic Rec Amp	THD MR	—	0.25	1.00	%	V _O =0dBm, R _L =2kΩ
	Radio Rec Amp	THD RR	—	0.25	1.00	%	V _O =0dBm, R _L =2kΩ
	Radio Line Amp	THD RL	—	0.04	0.45	%	V _O =-15dBm, R _L =10kΩ
Interchannel crosstalk level	P/B Line Amp	CT PL	—	—	-50	dBm	P/B _{IN} =-45dBm, R _L =10kΩ
	Radio Rec Amp	CT RR	—	—	-50	dBm	Radio _{IN} =-34dBm, R _L =2kΩ
	Radio Line Amp	CT RL	—	—	-50	dBm	Radio _{IN} =-34dBm, R _L =10kΩ
Inter-mode crosstalk	1	CT 1	—	-62	-49	dBm	P/B _{IN} =-45dBm, Mic Mode RecOut
	2	CT 2	—	-110	-80	dBm	P/B _{IN} =-45dBm, Mic Mode LineOut
	3	CT 3	—	-72	-59	dBm	P/B _{IN} =-45dBm, Radio Mode RecOut
	4	CT 4	—	-92	-79	dBm	P/B _{IN} =-45dBm, Radio Mode LineOut
	5	CT 5	—	-72	-59	dBm	Mic _{IN} =-51.5dBm, P/B Mode LineOut
	6	CT 6	—	-76	-63	dBm	Mic _{IN} =-51.5dBm, Radio Mode RecOut
	7	CT 7	—	-92	-79	dBm	Mic _{IN} =-51.5dBm, Radio Mode LineOut
	8	CT 8	—	-72	-59	dBm	Radio _{IN} =-34dBm, P/B Mode LineOut
	9	CT 9	—	-62	-48	dBm	Radio _{IN} =-34dBm, Mic Mode RecOut
	10	CT 10	—	-107	-80	dBm	Radio _{IN} =-34dBm, Mic Mode LineOut
Mic amplifier mute level		Mute	—	—	-80	dBm	Mic _{IN} =-51.5dBm, Mic Mode LineOut
Input resistance	P/B Amp	R _{IN P}	27	35	43	kΩ	V _{IN} =5mV _{rms}
	Mic Amp	R _{IN M}	14	18	22	kΩ	V _{IN} =1.7mV _{rms}
	Radio Amp	R _{IN R}	27	35	43	kΩ	V _{IN} =17mV _{rms}
Regulated voltage source output voltage		V _{regout}	4.3	4.75	5.2	V	R _L =50kΩ, Mic Mode
Regulated voltage source output current		I _{out}	115	180	—	μA	R _L =25kΩ, Mic Mode
Regulated voltage source temperature characteristic		ΔV _{reg} /ΔT	—	-5.4	—	mV/°C	R _L =50kΩ, Mic Mode

● Measurement circuit

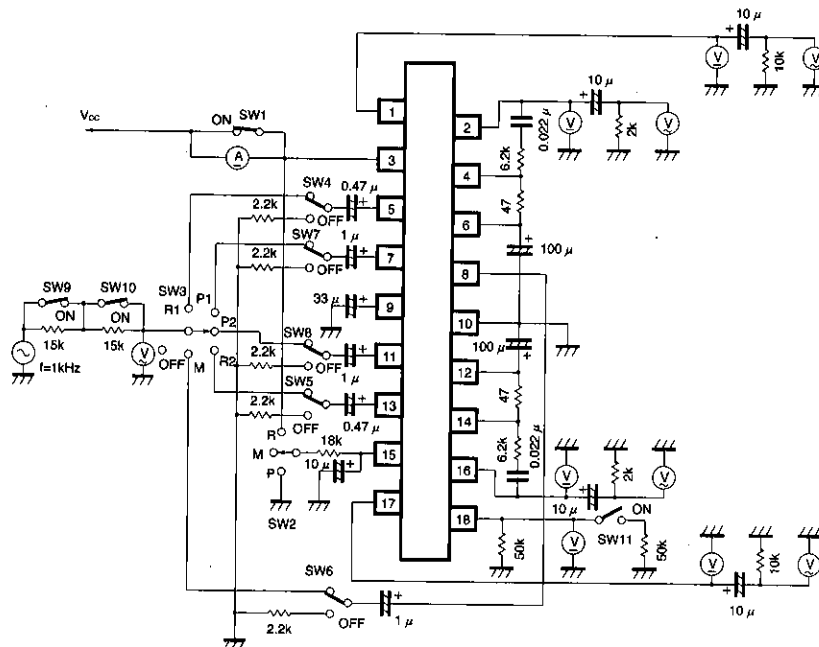


Fig. 1

●Measurement circuit switch control table

Item	Symbol	Condition	SW 1	SW 2	SW 3	SW 4	SW 5	SW 6	SW 7	SW 8	SW 9	SW 10	SW 11
Quiescent current	I _Q	P/B Mode	OFF	P	OFF	OFF	OFF	OFF	OFF	OFF	ON	ON	OFF
Voltage gain	G _{vc} PL	P/B Line Amp	ON	P	P1/P2	OFF	OFF	OFF	ON/OFF	OFF/ON	ON	ON	OFF
	G _{vc} MR	Mic Rec Amp	ON	M	M	OFF	OFF	ON	OFF	OFF	ON	ON	OFF
	G _{vc} RR	Radio Rec Amp	ON	R	R1/R2	ON/OFF	OFF/ON	OFF	OFF	OFF	ON	ON	OFF
	G _{vc} RL	Radio Line Amp	ON	R	R1/R2	ON/OFF	OFF/ON	OFF	OFF	OFF	ON	ON	OFF
Maximum output voltage	V _{om} PL	P/B Line Amp	ON	P	P1/P2	OFF	OFF	OFF	ON/OFF	OFF/ON	ON	ON	OFF
	V _{om} MR	Mic Rec Amp	ON	M	M	OFF	OFF	ON	OFF	OFF	ON	ON	OFF
	V _{om} RR	Radio Rec Amp	ON	R	R1/R2	ON/OFF	OFF/ON	OFF	OFF	OFF	ON	ON	OFF
	V _{om} RL	Radio Line Amp	ON	R	R1/R2	ON/OFF	OFF/ON	OFF	OFF	OFF	ON	ON	OFF
Input noise-conversion voltage	V _{NIN} P	P/B Amp	ON	P	OFF	OFF	OFF	OFF	OFF	OFF	ON	ON	OFF
	V _{NIN} M	Mic Amp	ON	M	OFF	OFF	OFF	OFF	OFF	OFF	ON	ON	OFF
	V _{NIN} R	Radio Amp	ON	R	OFF	OFF	OFF	OFF	OFF	OFF	ON	ON	OFF
Total harmonic distortion	THD PL	P/B Line Amp	ON	P	P1/P2	OFF	OFF	OFF	ON/OFF	OFF/ON	ON	ON	OFF
	THD MR	Mic Rec Amp	ON	M	M	OFF	OFF	ON	OFF	OFF	ON	ON	OFF
	THD RR	Radio Rec Amp	ON	R	R1/R2	ON/OFF	OFF/ON	OFF	OFF	OFF	ON	ON	OFF
	THD RL	Radio Line Amp	ON	R	R1/R2	ON/OFF	OFF/ON	OFF	OFF	OFF	ON	ON	OFF

Preamplifiers

Low-frequency amplifiers

Item	Symbol	Condition		SW 1	SW 2	SW 3	SW 4	SW 5	SW 6	SW 7	SW 8	SW 9	SW 10	SW 11
Interchannel crosstalk level	CT PL	P/B	1ch→2ch	ON	P	P1	OFF	OFF	OFF	ON	OFF	ON	ON	OFF
		LineAmp	2ch→1ch	ON	P	P2	OFF	OFF	OFF	OFF	ON	ON	ON	OFF
	CT RR	Radio	1ch→2ch	ON	R	R1	ON	OFF	OFF	OFF	OFF	ON	ON	OFF
		RecAmp	2ch→1ch	ON	R	R2	OFF	ON	OFF	OFF	OFF	ON	ON	OFF
	CT RL	Radio	1ch→2ch	ON	R	R1	ON	OFF	OFF	OFF	OFF	ON	ON	OFF
		LineAmp	2ch→1ch	ON	R	R2	OFF	ON	OFF	OFF	OFF	ON	ON	OFF
Inter-mode crosstalk level	CT 1	P/B→Mic RecOut		ON	M	P1/P2	OFF	OFF	OFF	ON/OFF	OFF/ON	ON	ON	OFF
	CT 2	P/B→Mic LineOut		ON	M	P1/P2	OFF	OFF	OFF	ON/OFF	OFF/ON	ON	ON	OFF
	CT 3	P/B→Radio RecOut		ON	R	P1/P2	OFF	OFF	OFF	ON/OFF	OFF/ON	ON	ON	OFF
	CT 4	P/B→Radio LineOut		ON	R	P1/P2	OFF	OFF	OFF	ON/OFF	OFF/ON	ON	ON	OFF
	CT 5	Mic→P/B LineOut		ON	P	M	OFF	OFF	ON	OFF	OFF	ON	ON	OFF
	CT 6	Mic→Radio RecOut		ON	R	M	OFF	OFF	ON	OFF	OFF	ON	ON	OFF
	CT 7	Mic→Radio LineOut		ON	R	M	OFF	OFF	ON	OFF	OFF	ON	ON	OFF
	CT 8	Radio→P/B LineOut		ON	P	R1/R2	ON/OFF	OFF/ON	OFF	OFF	OFF	ON	ON	OFF
	CT 9	Radio→Mic RecOut		ON	M	R1/R2	ON/OFF	OFF/ON	OFF	OFF	OFF	ON	ON	OFF
	CT10	Radio→Mic LineOut		ON	M	R1/R2	ON/OFF	OFF/ON	OFF	OFF	OFF	ON	ON	OFF
Mic Amplifier mute level	Mute	Mic LineAmp		ON	M	M	OFF	OFF	ON	OFF	OFF	ON	ON	OFF
Input resistance	R _{IN} P	P/B Amp		ON	P	P1/P2	OFF	OFF	OFF	ON/OFF	OFF/ON	OFF	OFF	OFF
	R _{IN} M	Mic Amp		ON	M	M	OFF	OFF	ON	OFF	OFF	OFF	ON	OFF
	R _{IN} R	Radio Amp		ON	R	R1/R2	ON/OFF	OFF/ON	OFF	OFF	OFF	OFF	OFF	OFF
Regulated voltage source output voltage	V _{reg} Out	Mic Mode		ON	M	OFF	OFF	OFF	OFF	OFF	OFF	ON	ON	OFF
Regulated voltage source output current	I _{out}	Mic Mode		ON	M	OFF	OFF	OFF	OFF	OFF	OFF	ON	ON	ON

● Application example 1

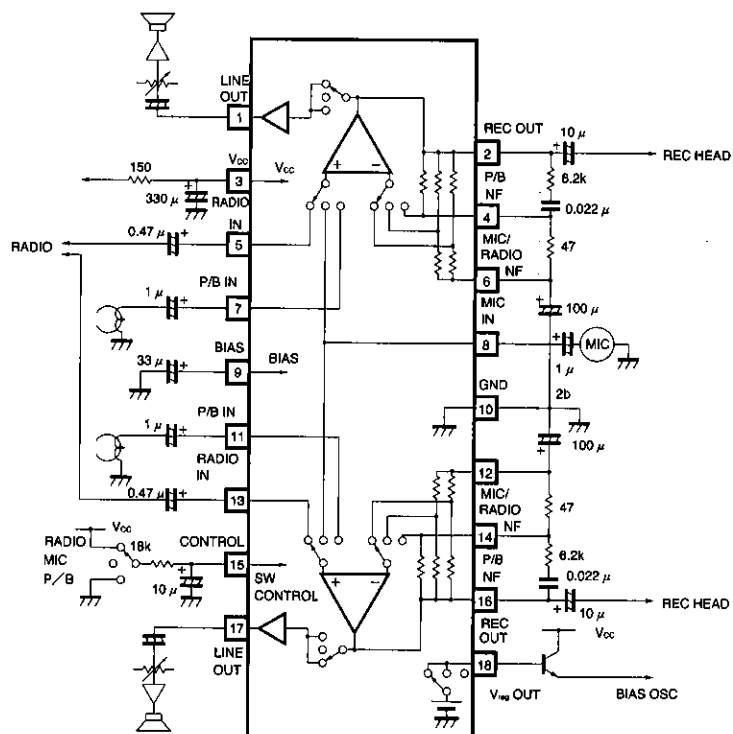


Fig. 2

● Application example block diagram

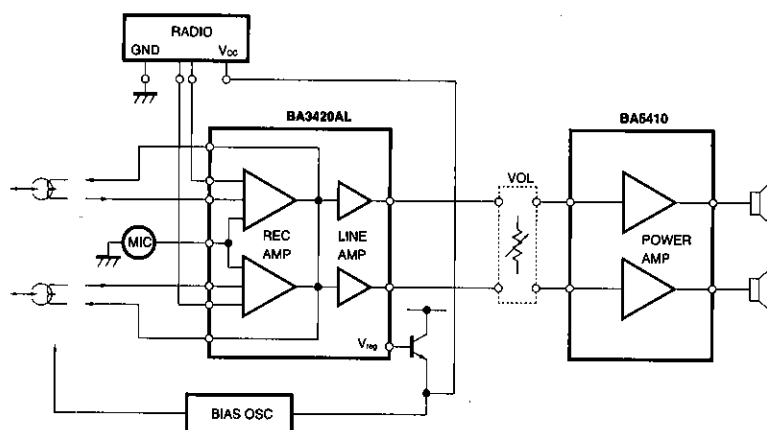


Fig. 3

● Application example 2

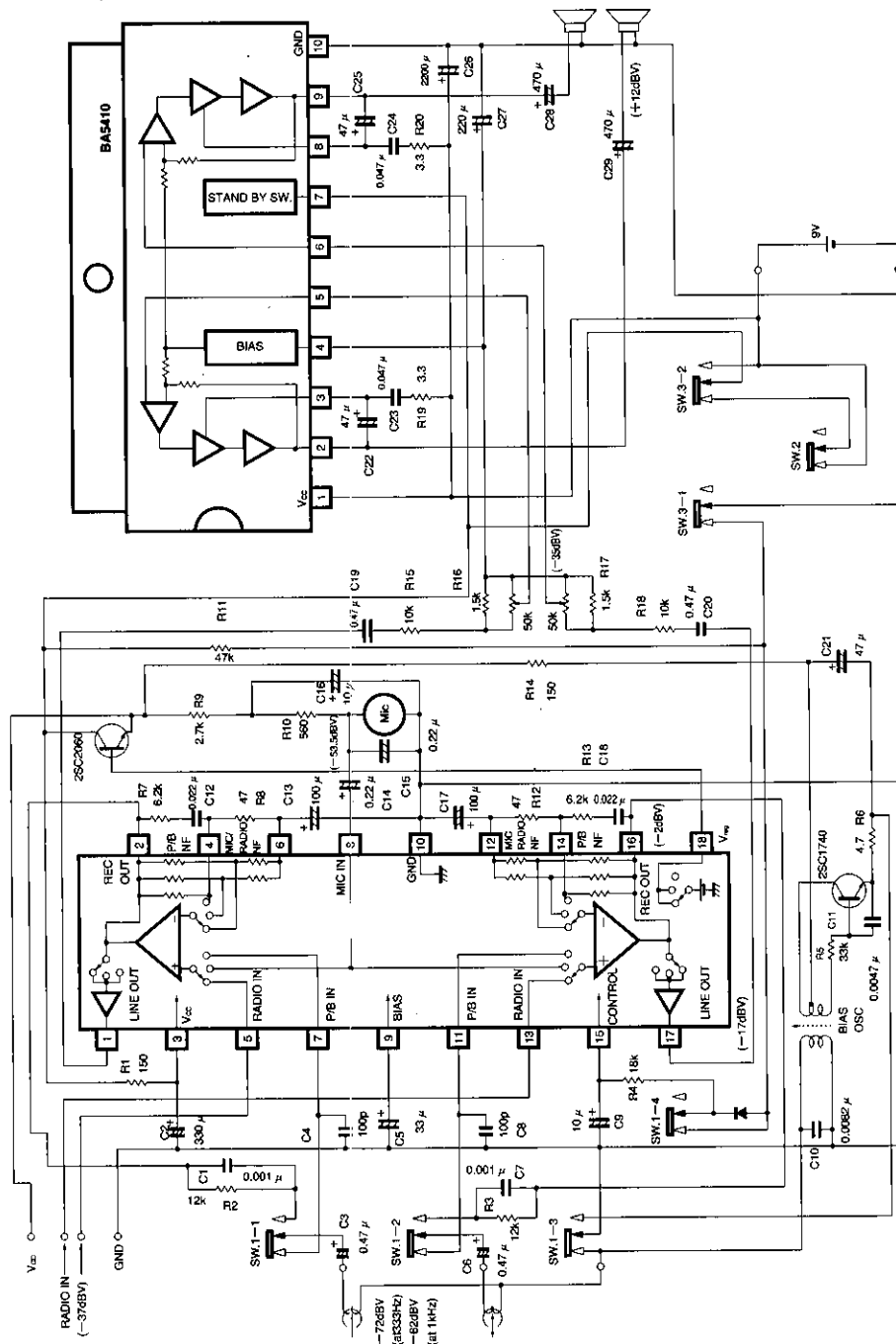


Fig. 4

Note: The power amplifier used in this circuit example is the BA5410.
This component is no longer sold. Use this circuit diagram for reference only.

●Electrical characteristics curves

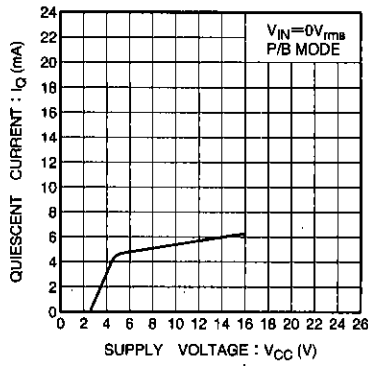


Fig. 5 Quiescent current vs. supply voltage

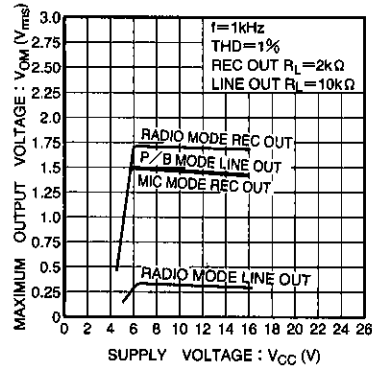


Fig. 6 Maximum output voltage vs. supply voltage

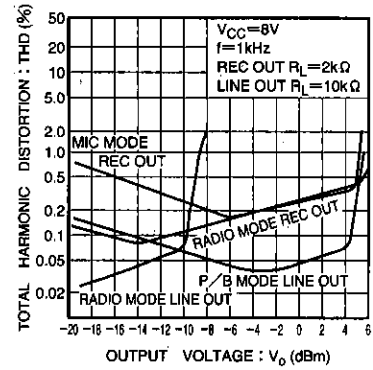


Fig. 7 Total harmonic distortion vs. output voltage

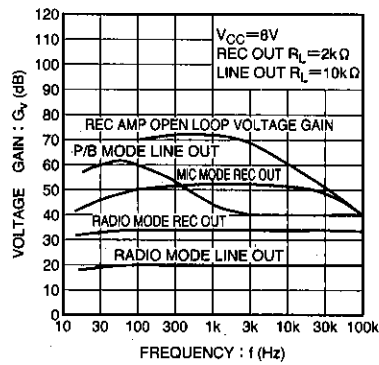
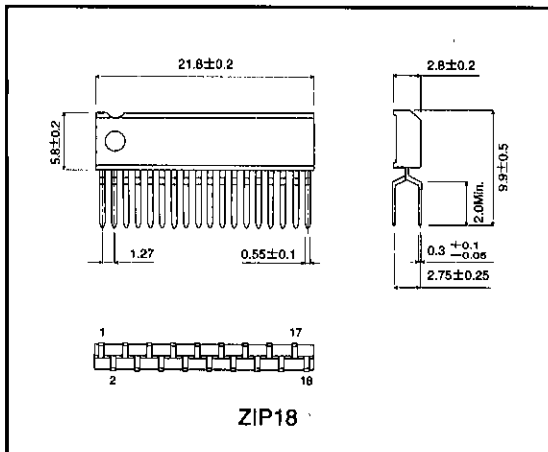


Fig. 8 Voltage gain vs. ambient temperature

●External dimensions (Unit: mm)



Notes

- The contents described in this catalogue are correct as of March 1997.
- No unauthorized transmission or reproduction of this book, either in whole or in part, is permitted.
- The contents of this book are subject to change without notice. Always verify before use that the contents are the latest specifications. If, by any chance, a defect should arise in the equipment as a result of use without verification of the specifications, ROHM CO., LTD., can bear no responsibility whatsoever.
- Application circuit diagrams and circuit constants contained in this data book are shown as examples of standard use and operation. When designing for mass production, please pay careful attention to peripheral conditions.
- Any and all data, including, but not limited to application circuit diagrams, information, and various data, described in this catalogue are intended only as illustrations of such devices and not as the specifications for such devices. ROHM CO., LTD., disclaims any warranty that any use of such device shall be free from infringement of any third party's intellectual property rights or other proprietary rights, and further, assumes absolutely no liability in the event of any such infringement, or arising from or connected with or related to the use of such devices.
- Upon the sale of any such devices; other than for the buyer's right to use such devices itself, resell or otherwise dispose of the same; no express or implied right or license to practice or commercially exploit any intellectual property rights or other proprietary rights owned or controlled by ROHM CO., LTD., is granted to any such buyer.
- The products in this manual are manufactured with silicon as the main material.
- The products in this manual are not of radiation resistant design.

The products listed in this catalogue are designed to be used with ordinary electronic equipment or devices (such as audio-visual equipment, office-automation equipment, communications devices, electrical appliances, and electronic toys). Should you intend to use these products with equipment or devices which require an extremely high level of reliability and the malfunction of which would directly endanger human life (such as medical instruments, transportation equipment, aerospace machinery, nuclear-reactor controllers, fuel controllers, or other safety devices) please be sure to consult with our sales representatives in advance.

- Notes when exporting

- It is essential to obtain export permission when exporting any of the above products when it falls under the category of strategic material (or labor) as determined by foreign exchange or foreign trade control laws.
- Please be sure to consult with our sales representatives to ascertain whether any product is classified as a strategic material.