

LP3941A

Cellular Phone Power Management Unit

General Description

LP3941A is a complete power management IC designed for a cellular phone. It contains 11 low noise low dropout regulators, a linear charger for Li-Ion battery, a backup battery charger, real time clock supply regulator, three open drain drivers, two comparators and high speed I²C compatible serial interface to program individual regulator output voltages as well as on/off control.

LP3941 is available in a LLP48 package.

Features

- 11 low dropout, low noise LDOs.
- Dedicated low current LDO for real time clock supply.
- Back-up battery charger
- A constant current / constant voltage battery charger controller with charge status indication via I²C compatible interface.

- Three open drain drivers to control a RGB LED
- I²C compatible serial interface for maximum flexibility

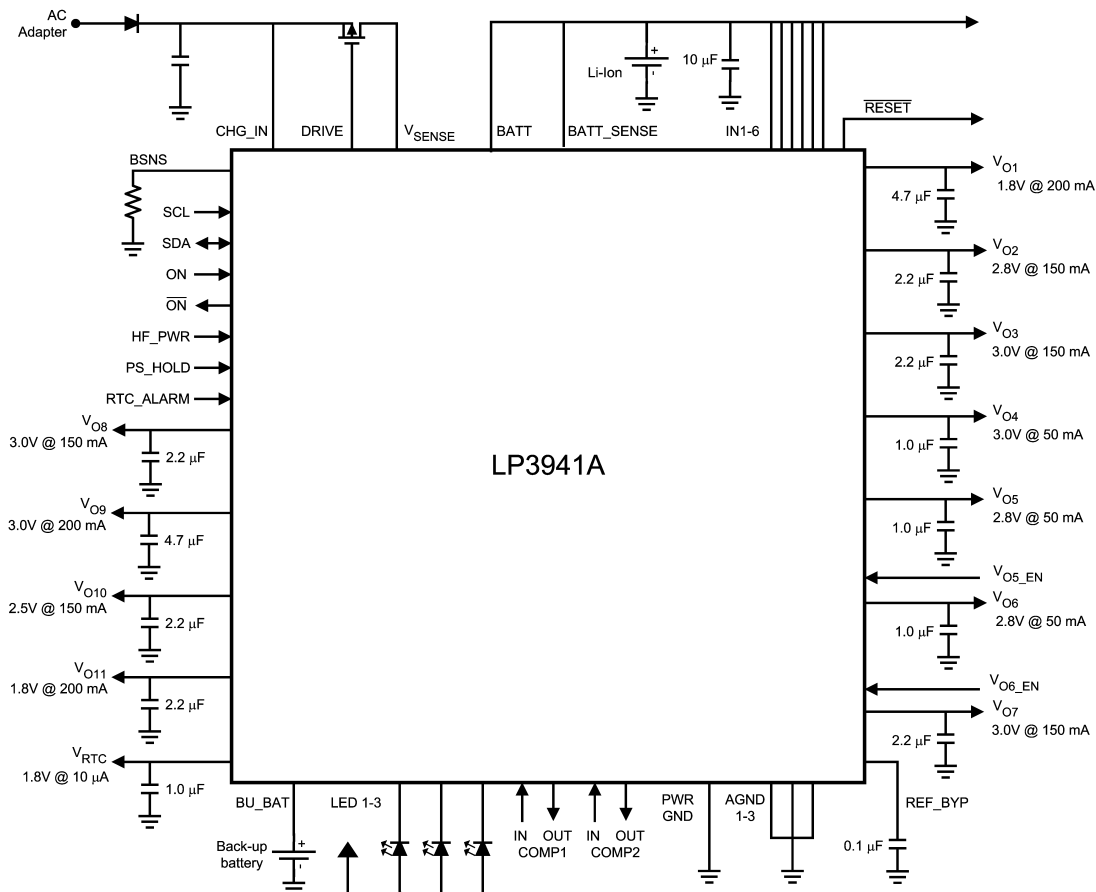
Applications

- GSM/EDGE cellular handsets
- Wideband CDMA cellular handsets

Key Specifications

- 3.0V to 5.5V Input Voltage Range
- 27 μV_{RMS} Output noise
- 2% (typical) Output Voltage Accuracy
- 1% Charger Voltage Accuracy

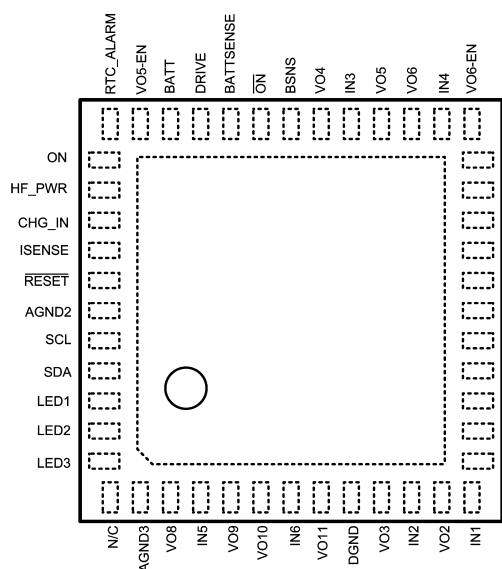
Typical Application



20094501

Connection Diagrams and Package Mark Information

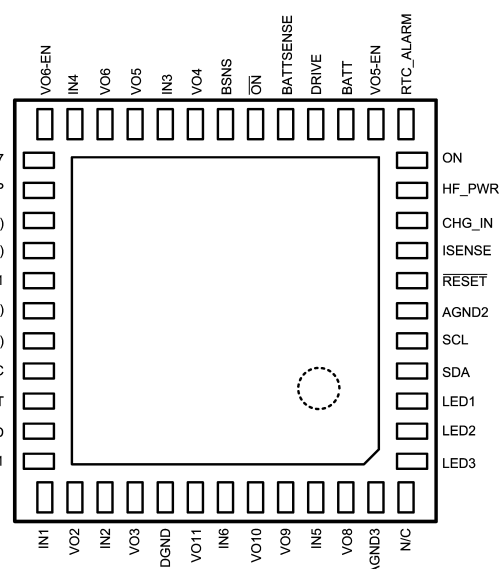
48-Pin Leadless Leadframe Package
See NS Package Number LQA48B



Note: Circle marks pin 1 position. Pin 1 name is N/C.

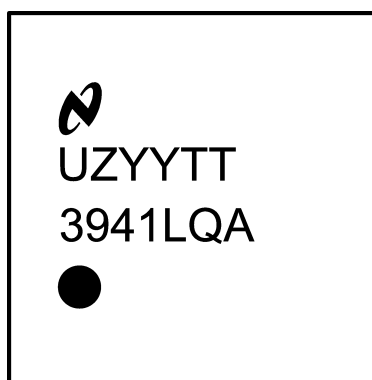
Top View

20094503



Bottom View

20094502



20094517

Note: The actual physical placement of the package marking will vary from part to part. The package markings "UZYTT" designate assembly and manufacturing information. "TT" is a NSC internal code for die traceability. Both will vary considerably. "3941LQA" identifies the device.

Package Mark — Top View

Ordering Information

Order Number	Package Marking	Supplied As
LP3941LQ-A	LP3941LQA	250 units, Tape-and-Reel
LP3941LQX-A	LP3941LQA	2500 units, Tape-and-Reel

Note: *See LP3941A register table and LDO programming table for information on the default voltages for LP3941A.

Pin Description

Pin #	Name	I/O	Type	Description
1	N/C	-	-	Not used. Connect to ground.
2	AGND3	G	G	Analog ground pin.
3	V _{O8}	O	A	LDO 8 Output
4	IN5	I	P	Input power terminal to LDO's. Must be connected to IN1–4 and IN6.
5	V _{O9}	O	A	LDO 9 output.
6	V _{O10}	O	A	LDO 10 output.
7	IN6	I	P	Input power terminal to LDO's. Must be connected to IN1–5.
8	V _{O11}	O	A	LDO 11 output.
9	DGND	G	G	Ground pin.
10	V _{O3}	O	A	LDO 3 output.
11	IN2	I	P	Input power terminal to LDO's. Must be connected to IN1 and IN3–6.
12	V _{O2}	O	A	LDO 2 output.
13	IN1	I	P	Input power terminal to LDO's. Must be connected to IN2–6.
14	V _{O1}	O	A	LDO 1 output.
15	PS-HOLD	I	D	Active low off key initiated by the micro controller.
16	BU_BAT	I	A	Back-up battery connection.
17	VRTC	O	A	RTC_LDO output.
18	IN (COMP1)	I	A	Non-inverting inout of the comparator 1.
19	OUT (COMP1)	O	A	Output of the comparator 1.
20	AGND1	G	G	Analog ground pin.
21	IN (COMP2)	I	A	Non-inverting input of the comparator 2.
22	OUT (COMP2)	O	A	Output of the comparator 2.
23	REF-BYP	I	A	Reference bypass capacitor.
24	V _{O7}	O	A	LDO 7 output.
25	V _{O6} -EN	I	D	LDO 6 on/off pin. Internal pull-down resistor of 1 MΩ.
26	IN4	I	P	Input power terminal to LDO's. Must be connected to IN1–3 and IN5–6.
27	V _{O6}	O	A	LDO 6 output.
28	V _{O5}	O	A	LDO 5 output.
29	IN3	I	P	Input power terminal to LDO's. Must be connected to IN1–2 and IN4–6.
30	V _{O4}	O	A	LDO 4 output.
31	BSNS	I	A	Main battery ID resistor connection.
32	ON	O	OD	Inverted open drain output signal of the ON input. Pulled low when ON is pulled high and open drain when ON is pulled low. There is no significant delay between the ON signal going high and ON pin going low. The delay between ON signal going low and ON pin is determined by the pull up current and capacitance connected to this pin.
33	BATT _{SENSE}	I	A	Battery voltage sense pin. Should be connected as close to the battery's + terminal as possible.
34	Drive	O	A	Gate drive to the external MOSFET.
35	BATT	O	A	Battery supply input terminal. Must have 10 μF ceramic capacitor to GND.
36	V _{O5} -EN	I	D	LDO 5 on/off pin. Internal pull down resistor of 1 MΩ.
37	RTC_ALARM	I	D	RTC_ALARM input.
38	ON	I	D	Active high power On/Off key. This pin is pulled to GND by an internal 200 kΩ resistor.
39	HF_PWR	I	D	Active high Hands Free connection signal. This pin has an internal 200 kΩ pull down resistor.
40	CHG_IN	I	P	Charger input from a current limited power source. Must have a 1 μF ceramic capacitor to GND.
41	I _{SENSE}	O	A	Charge current sense resistor.
42	RESET	O	OD	Reset output. Active low. (See Power Up Timing Diagram.)

Pin Description (Continued)

Pin #	Name	I/O	Type	Description
43	AGND2	G	G	Analog ground pin.
44	SCL	I	D	Serial interface clock input.
45	SDA	I/O	D	Serial interface data input/output.
46	LED1	O	OD	LED driver output pin.
47	LED2	O	OD	LED driver output pin.
48	LED3	O	OD	LED driver output pin.

A: Analog Pin D: Digital Pin G: Ground Pin P: Power Pin I: Input Pin I/O: Input/Output Pin O: Output Pin OD: Open Drain Pin

Absolute Maximum Ratings (Notes 1,

2)

If Military/Aerospace specified devices are required, please contact the National Semiconductor Sales Office/Distributors for availability and specifications.

CHG-IN	-0.3V to +12V
IN1-6, BATT, SDA, SCL, ON, HF-PWR, PS-HOLD, SYS, COMP1_IN, COMP2_IN, CHG_IN, BSNS, V _{O5} -EN, V _{O6} -EN, LED1-3, RTC_ALARM, BU_BAT, V _{RTC} , RESET, BATT _{SENSE}	-0.3V to +6V
REFBYP, $\overline{\text{ON}}$, PS-HOLD, COMP1_OUT, COMP2_OUT to GND	-0.3V to +V _{BAT} + 0.3V
V _{O1} to GND	-0.3V to +V _{IN1} + 0.3V
V _{O2} , V _{O3} to GND	-0.3V to +V _{IN2} + 0.3V
V _{O4} , V _{O5} to GND	-0.3V to +V _{IN3} + 0.3V
V _{O6} , V _{O7} to GND	-0.3V to +V _{IN4} + 0.3V
V _{O8} , V _{O9} to GND	-0.3V to +V _{IN5} + 0.3V
V _{O10} , V _{O11} to GND	-0.3V to +V _{IN6} + 0.3V
GND to GND SLUG	±0.3V

Maximum Continuous Power Dissipation

(P_{D_MAX}) (Note 3) 3.07WJunction Temperature (T_{J-MAX}) 150°C

Storage Temperature Range -65°C to +150°C

Maximum Lead Temperature
(Soldering) (Note 4)

ESD Ratings (Note 5)

All Pins 2 kV HBM
200V MM

Operating Ratings (Notes 1, 2)

V_{IN} 3.0V to 6.0VV_{EN} 0V to (V_{IN} + 0.3V)Junction Temperature (T_J) Range -40°C to +125°CAmbient Temperature (T_A) Range
(Note 6) -40°C to +85°C

Thermal Properties (Note 7)

Junction-to-Ambient Thermal

Resistance (θ_{JA}) 26°C/W

Electrical Characteristics

Unless otherwise noted, V_{IN} = 2.5V to 5.5V, C_{IN} (IN1-6) = 4.7 μF, C_{OUT} (V_{O1} and V_{O9}) = 4.7 μF, C_{OUT} (V_{O2}, V_{O3}, V_{O7}, V_{O8}, V_{O10} and V_{O11}) = 2.2 μF, C_{OUT} (V_{O4} to V_{O6}) = 1 μF, C_{OUT} (V_{RTC}) = 1 μF ceramic, C_{BYP} = 0.1 μF. Typical values and limits appearing in normal type apply for T_J = 25°C. Limits appearing in **boldface** type apply over the entire junction temperature range for operation, -40 to +125°C. (Notes 2, 8, 9, 10)

Symbol	Parameter	Condition	Min	Typ	Max	Units
I _Q	Shutdown Supply Current	V _{BATT} = 2.1V, UVLO on, internal logic generator on, V _{RTC} off, all other circuits off.		14		μA
	No Load Supply Current, LDO 1 & 3 & 5 on	V _{BATT} = 3.6V, LDOs V _{O1} , V _{O3} and V _{O5} on, back-up battery charger and V _{RTC} on, charger disconnected, comparator 1 & 2 on.		310		μA
	No Load Supply Current	V _{BATT} = 3.6V, All LDOs on, charger disconnected.		500		μA
BATTERY UNDER VOLTAGE LOCKOUT						
V _{UVLO-R}	Under Voltage Lock-Out	V _{BATT} Rising	2.91	3.1	3.32	V
V _{UVLO-F}	Under Voltage Lock-Out	V _{BATT} Falling	2.15	2.49	2.85	V
V _{TH-POR}	Power-On Reset Threshold	V _{BATT} Falling Edge	1	1.7	2.3	V
THERMAL SHUTDOWN						
	Threshold			160		°C
	Hysteresis			10		
OUTPUT CAPACITORS						
C _{OUT}	Capacitance		1		20	μF
	ESR		5		500	mΩ
LOGIC AND CONTROL INPUTS						
V _{IL}	Input Low Level	PS-HOLD, ON, BSNS, HF-PWR, RTC_ALARM, SDA, SCL, V _{O5} -EN, V _{O6} -EN. 2.5V ≤ V _{BATT} ≤ 5.5V			0.4	V

Electrical Characteristics (Continued)

Unless otherwise noted, $V_{IN} = 2.5V$ to $5.5V$, C_{IN} (IN1–6) = $4.7 \mu F$, C_{OUT} (V_{O1} and V_{O9}) = $4.7 \mu F$, C_{OUT} (V_{O2} , V_{O3} , V_{O7} , V_{O8} , V_{O10} and V_{O11}) = $2.2 \mu F$, C_{OUT} (V_{O4} to V_{O6}) = $1 \mu F$, C_{OUT} (V_{RTC}) = $1 \mu F$ ceramic, $C_{BYP} = 0.1 \mu F$. Typical values and limits appearing in normal type apply for $T_J = 25^\circ C$. Limits appearing in **boldface** type apply over the entire junction temperature range for operation, -40 to $+125^\circ C$. (Notes 2, 8, 9, 10)

Symbol	Parameter	Condition	Min	Typ	Max	Units
LOGIC AND CONTROL INPUTS						
V_{IH}	Input High Level	PS-HOLD, ON, BSNS, HF-PWR, RTC_ALARM, SDA, SCL, V_{O5} -EN, V_{O6} -EN. $2.5V \leq V_{BATT} \leq 5.5V$	2.0			V
I_{IL}	Logic Input Current	SDA, SCL $0V \leq V_{IN} \leq 5.5V$	-5		+5	μA
	PS-HOLD Input Current	$0V \leq V_{IN} \leq V_{BATT}$	-5		+5	μA
R_{IN}	ON, HF_PWR Pull-Down Resistance to GND			200		$k\Omega$
	V_{O5} -EN, V_{O6} -EN, RTC_ALARM Pull Down Resistance to GND			1700		$k\Omega$
LOGIC AND CONTROL OUTPUTS						
V_{OL}	\overline{ON} Output Low Level	$I_{SINK} = 1 mA$			0.4	V
$I_{LEAKAGE}$	\overline{ON} Open Drain Leakage	$\overline{V}_{ON} = 4.2V$			5	μA
I_{O-MAX}	\overline{ON} , RESET, OUT (COMP1), OUT (COMP2) Output Maximum Sink/Source Current				5	mA

V_{O1} LDO Electrical Characteristics

Unless otherwise noted, $V_{IN} = V_{BATT} = 3.6V$. Typical values and limits appearing in normal type apply for $T_J = 25^\circ C$. Limits appearing in **boldface** type apply over the entire junction temperature range for operation, -40 to $+85^\circ C$. (Notes 2, 8, 9)

Symbol	Parameter	Condition	Min	Typ	Max	Units
V_{OUT} Accuracy	Output Voltage	$1 mA \leq I_{OUT} \leq 200 mA$, $V_{OUT} = 2.2V$ $3.0V \leq V_{BATT} = V_{IN} \leq 5.5V$	-3	± 1.0	+3	%
V_{OUT} Range	Programmable Output Voltage Range	$0 \mu A \leq I_{OUT} \leq 200 mA$ Programming Resolution = 100 mV	1.5	1.8	3.0	V
I_{OUT}	Output Current	$(V_{OUT} + 0.25V, 3.0V)_{MAX} \leq V_{BATT}$ $V_{BATT} = V_{IN} \leq 5.5V$			200	mA
	Output Current Limit	$V_{OUT} = 0V$		780		
$V_{IN}-V_{OUT}$	Dropout Voltage	$I_{OUT} = 100 mA$		70	254	mV
ΔV_{OUT}	Line Regulation	$(V_{OUT} + 0.25V, 3.0V)_{MAX} \leq V_{BATT}$ $V_{BATT} = V_{IN} \leq 5.5V$, $I_{OUT} = 100 mA$		3		mV
	Load Regulation	$V_{IN} = 3.6V$, $1 mA \leq I_{OUT} \leq 200 mA$		10		
e_N	Output Noise Voltage	$10 Hz \leq f \leq 100 kHz$, $C_{OUT} = 4.7 \mu F$		27		μV_{RMS}
PSRR	Power Supply Ripple Rejection Ratio	$f = 217 Hz$, $C_{OUT} = 4.7 \mu F$		60		dB
C_{OUT}	Output Capacitance	$1 mA \leq I_{OUT} \leq 200 mA$	2		20	μF
	Output Capacitor ESR		5		500	m Ω
$t_{START-UP}$	Start-Up Time from Shutdown ON-signal	$C_{OUT} = 4.7 \mu F$, $I_{OUT} = 200 mA$ (Note 10)	80	120	180	μs

Note: This LDO will be ON after start up by default.

Note: $(V_{OUT} + 0.25V, 3.0V)_{MAX}$ means greater of the two. That is 3.0V if $V_{OUT} < 2.75V$.

Note: The PMU can switch off if battery voltage is below 3.0V due to under voltage lockout designed to protect the battery from excessive discharge at low voltages.

Note: The start-up time ($t_{START-UP}$) is defined as the time between the rising edge of ON-, HF_PWR-, RTC_ALARM- or CHG_IN- pins going high and activating the power-up sequence of the LP3941A.

V_{O2} LDO Electrical Characteristics

Unless otherwise noted, $V_{IN} = V_{BATT} = 3.6V$. Typical values and limits appearing in normal type apply for $T_J = 25^\circ C$. Limits appearing in **boldface** type apply over the entire junction temperature range for operation, -40 to $+125^\circ C$. (Notes 2, 8, 9)

Symbol	Parameter	Condition	Min	Typ	Max	Units
V _{OUT} Accuracy	Output Voltage	$1\text{ mA} \leq I_{OUT} \leq 200\text{ mA}$, $V_{OUT} = 2.2V$ $3.0V \leq V_{BATT} = V_{IN} \leq 5.5V$	-3	± 1.0	+3	%
V _{OUT} Range	Programmable Output Voltage Range	$0\text{ }\mu A \leq I_{OUT} \leq 200\text{ mA}$ Programming Resolution = 100 mV	1.5	2.8	3.0	V
I _{OUT}	Output Current	$(V_{OUT} + 0.25V, 3.0V)_{MAX} \leq V_{BATT}$ $V_{BATT} = V_{IN} \leq 5.5V$			150	mA
	Output Current Limit	$V_{OUT} = 0V$		540		
V _{IN} -V _{OUT}	Dropout Voltage	$I_{OUT} = 75\text{ mA}$		30	174	mV
ΔV_{OUT}	Line Regulation	$(V_{OUT} + 0.25V, 3.0V)_{MAX} \leq V_{BATT}$ $V_{BATT} = V_{IN} \leq 5.5V$, $I_{OUT} = 75\text{ mA}$		3		mV
	Load Regulation	$V_{IN} = 3.6V$, $1\text{ mA} \leq I_{OUT} \leq 150\text{ mA}$		12	41	
e _N	Output Noise Voltage	$10\text{ Hz} \leq f \leq 100\text{ kHz}$, $C_{OUT} = 2.2\text{ }\mu F$		27		μV_{RMS}
PSRR	Power Supply Ripple Rejection Ratio	$f = 217\text{ Hz}$, $C_{OUT} = 2.2\text{ }\mu F$		57		dB
I _{GND}	Ground Current	$I_{OUT} = 100\text{ }\mu A$		30		μA
C _{OUT}	Output Capacitance Output Capacitor ESR	$0\text{ mA} \leq I_{OUT} \leq 150\text{ mA}$	2		20	μF
			5		500	m Ω
t _{START-UP}	Start-Up Time from Shutdown	$C_{OUT} = 2.2\text{ }\mu F$, $I_{OUT} = 150\text{ mA}$ (Note 10)		60		μs

V_{O3} LDO Electrical Characteristics

Unless otherwise noted, $V_{IN} = V_{BATT} = 3.6V$. Typical values and limits appearing in normal type apply for $T_J = 25^\circ C$. Limits appearing in **boldface** type apply over the entire junction temperature range for operation, -40 to $+125^\circ C$. (Notes 2, 8, 9)

Symbol	Parameter	Condition	Min	Typ	Max	Units
V _{OUT} Accuracy	Output Voltage	$1\text{ mA} \leq I_{OUT} \leq 150\text{ mA}$, $V_{OUT} = 2.7V$ $3.0V \leq V_{BATT} = V_{IN} \leq 5.5V$	-3	± 1.0	+3	%
V _{OUT} Range	Programmable Output Voltage Range	$0\text{ }\mu A \leq I_{OUT} \leq 150\text{ mA}$ Programming Resolution = 100 mV	2.5	3.0	3.2	V
I _{OUT}	Output Current	$(V_{OUT} + 0.25V, 3.0V)_{MAX} \leq V_{BATT}$ $V_{BATT} = V_{IN} \leq 5.5V$			150	mA
	Output Current Limit	$V_{OUT} = 0V$		520		
V _{IN} -V _{OUT}	Dropout Voltage	$I_{OUT} = 75\text{ mA}$		30	156	mV
ΔV_{OUT}	Line Regulation	$(V_{OUT} + 0.25V, 3.0V)_{MAX} \leq V_{BATT}$ $V_{BATT} = V_{IN} \leq 5.5V$, $I_{OUT} = 75\text{ mA}$		3		mV
	Load Regulation	$V_{IN} = 3.6V$, $1\text{ mA} \leq I_{OUT} \leq 150\text{ mA}$		12	41	
e _N	Output Noise Voltage	$10\text{ Hz} \leq f \leq 100\text{ kHz}$, $C_{OUT} = 2.2\text{ }\mu F$		27		μV_{RMS}
PSRR	Power Supply Ripple Rejection Ratio	$f = 217\text{ Hz}$, $C_{OUT} = 2.2\text{ }\mu F$		56		dB
I _{GND}	Ground Current	$I_{OUT} = 500\text{ }\mu A$		30		μA
C _{OUT}	Output Capacitance Output Capacitor ESR	$0\text{ mA} \leq I_{OUT} \leq 150\text{ mA}$	2		20	μF
			5		500	m Ω
t _{START-UP}	Start-Up Time from Shutdown	$C_{OUT} = 2.2\text{ }\mu F$, $I_{OUT} = 150\text{ mA}$ (Note 10)		60		μs

Note: This LDO will be ON after start-up by default. It can be disabled via the register file.

V_{O4} LDO Electrical Characteristics

Unless otherwise noted, $V_{IN} = V_{BATT} = 3.6V$. Typical values and limits appearing in normal type apply for $T_J = 25^\circ C$. Limits appearing in **boldface** type apply over the entire junction temperature range for operation, -40 to $+125^\circ C$. (Notes 2, 8, 9)

Symbol	Parameter	Condition	Min	Typ	Max	Units
V _{OUT} Accuracy	Output Voltage	$1\text{ mA} \leq I_{OUT} \leq 50\text{ mA}$, $V_{OUT} = 2.2V$ $3.0V \leq V_{BATT} = V_{IN} \leq 5.5V$	-3	± 1.0	+3	%
V _{OUT} Range	Programmable Output Voltage Range	$0\text{ }\mu A \leq I_{OUT} \leq 50\text{ mA}$ Programming Resolution = 100 mV	1.5	3.0	3.0	V
I _{OUT}	Output Current	$(V_{OUT} + 0.25V, 3.0V)_{MAX} \leq V_{BATT}$ $V_{BATT} = V_{IN} \leq 5.5V$			50	mA
	Output Current Limit	$V_{OUT} = 0V$		140		
V _{IN} -V _{OUT}	Dropout Voltage	$I_{OUT} = 25\text{ mA}$		7	90	mV
ΔV_{OUT}	Line Regulation	$(V_{OUT} + 0.25V, 3.0V)_{MAX} \leq V_{BATT}$ $V_{BATT} = V_{IN} \leq 5.5V$, $I_{OUT} = 25\text{ mA}$		3		mV
	Load Regulation	$V_{IN} = 3.6V$, $1\text{ mA} \leq I_{OUT} \leq 50\text{ mA}$		4	31	
e _N	Output Noise Voltage	$10\text{ Hz} \leq f \leq 100\text{ kHz}$, $C_{OUT} = 1.0\text{ }\mu F$		27		μV_{RMS}
PSRR	Power Supply Ripple Rejection Ratio	$f = 217\text{ Hz}$, $C_{OUT} = 1.0\text{ }\mu F$		56		dB
I _{GND}	Ground Current	$I_{OUT} = 100\text{ }\mu A$		30		μA
C _{OUT}	Output Capacitance Output Capacitor ESR	$0\text{ }\mu A \leq I_{OUT} \leq 50\text{ mA}$	1		20	μF
			5		500	m Ω
t _{START-UP}	Start-Up Time from Shutdown	$C_{OUT} = 1.0\text{ }\mu F$, $I_{OUT} = 50\text{ mA}$ (Note 10)		60		μs

V_{O5} LDO Electrical Characteristics

Unless otherwise noted, $V_{IN} = V_{BATT} = 3.6V$. Typical values and limits appearing in normal type apply for $T_J = 25^\circ C$. Limits appearing in **boldface** type apply over the entire junction temperature range for operation, -40 to $+125^\circ C$. (Notes 2, 8, 9)

Symbol	Parameter	Condition	Min	Typ	Max	Units
V _{OUT} Accuracy	Output Voltage	$1\text{ mA} \leq I_{OUT} \leq 50\text{ mA}$, $V_{OUT} = 2.2V$ $3.0V \leq V_{BATT} = V_{IN} \leq 5.5V$	-3	± 1.0	+3	%
V _{OUT} Range	Programmable Output Voltage Range	$0\text{ }\mu A \leq I_{OUT} \leq 50\text{ mA}$ Programming Resolution = 100 mV	2.5	2.8	3.2	V
I _{OUT}	Output Current	$(V_{OUT} + 0.25V, 3.0V)_{MAX} \leq V_{BATT}$ $V_{BATT} = V_{IN} \leq 5.5V$			50	mA
	Output Current Limit	$V_{OUT} = 0V$		160		
V _{IN} -V _{OUT}	Dropout Voltage	$I_{OUT} = 25\text{ mA}$		7	90	mV
ΔV_{OUT}	Line Regulation	$(V_{OUT} + 0.25V, 3.0V)_{MAX} \leq V_{BATT}$ $V_{BATT} = V_{IN} \leq 5.5V$, $I_{OUT} = 25\text{ mA}$		3		mV
	Load Regulation	$V_{IN} = 3.6V$, $1\text{ mA} \leq I_{OUT} \leq 50\text{ mA}$		4	31	
e _N	Output Noise Voltage	$10\text{ Hz} \leq f \leq 100\text{ kHz}$, $C_{OUT} = 1.0\text{ }\mu F$		27		μV_{RMS}
PSRR	Power Supply Ripple Rejection Ratio	$f = 217\text{ Hz}$, $C_{OUT} = 1.0\text{ }\mu F$		56		dB
I _{GND}	Ground Current	$I_{OUT} = 100\text{ }\mu A$		30		μA
C _{OUT}	Output Capacitance Output Capacitor ESR	$0\text{ }\mu A \leq I_{OUT} \leq 50\text{ mA}$	1		20	μF
			5		500	m Ω
t _{START-UP}	Start-Up Time from Shutdown	$C_{OUT} = 1.0\text{ }\mu F$, $I_{OUT} = 50\text{ mA}$ (Note 10)		60		μs

Note: This LDO will be ON after start-up by default.

Note: This LDO has an external active high enable pin, V_{O5}-EN as well as the internal register enable bit. The LDO is on if either of these is "1" (OR-function). The enable bit is "1" by default and can be disabled via the register file.

V_{O6} LDO Electrical Characteristics

Unless otherwise noted, $V_{IN} = V_{BATT} = 3.6V$. Typical values and limits appearing in normal type apply for $T_J = 25^\circ C$. Limits appearing in **boldface** type apply over the entire junction temperature range for operation, -40 to $+125^\circ C$. (Notes 2, 8, 9)

Symbol	Parameter	Condition	Min	Typ	Max	Units
V _{OUT} Accuracy	Output Voltage	$1\text{ mA} \leq I_{OUT} \leq 50\text{ mA}$, $V_{OUT} = 2.7V$ $3.0V \leq V_{BATT} = V_{IN} \leq 5.5V$	-3	± 1.0	+3	%
V _{OUT} Range	Programmable Output Voltage Range	$0\text{ }\mu A \leq I_{OUT} \leq 50\text{ mA}$ Programming Resolution = 100 mV	2.5	2.8	3.2	V
I _{OUT}	Output Current	$(V_{OUT} + 0.25V, 3.0V)_{MAX} \leq V_{BATT}$ $V_{BATT} = V_{IN} \leq 5.5V$			50	mA
	Output Current Limit	$V_{OUT} = 0V$		170		
V _{IN} -V _{OUT}	Dropout Voltage	$I_{OUT} = 25\text{ mA}$		7	90	mV
ΔV_{OUT}	Line Regulation	$(V_{OUT} + 0.25V, 3.0V)_{MAX} \leq V_{BATT}$ $V_{BATT} = V_{IN} \leq 5.5V$, $I_{OUT} = 25\text{ mA}$		3		mV
	Load Regulation	$V_{IN} = 3.6V$, $1\text{ mA} \leq I_{OUT} \leq 50\text{ mA}$		4	31	
e _N	Output Noise Voltage	$10\text{ Hz} \leq f \leq 100\text{ kHz}$, $C_{OUT} = 1.0\text{ }\mu F$		27		μV_{RMS}
PSRR	Power Supply Ripple Rejection Ratio	$f = 217\text{ Hz}$, $C_{OUT} = 1.0\text{ }\mu F$		56		dB
I _{GND}	Ground Current	$I_{OUT} = 100\text{ }\mu A$		30		μA
C _{OUT}	Output Capacitance Output Capacitor ESR	$0\text{ }\mu A \leq I_{OUT} \leq 50\text{ mA}$	1		20	μF
			5		500	m Ω
t _{START-UP}	Start-Up Time from Shutdown	$C_{OUT} = 1.0\text{ }\mu F$, $I_{OUT} = 50\text{ mA}$ (Note 10)		60		μs

Note: This LDO has an external active high enable pin, V_{O6}-EN as well as an internal register enable bit. The LDO is on if either of these is "1" (OR-function). The enable bit is "0" by default and can be enabled via the register file.

V_{O7} LDO Electrical Characteristics

Unless otherwise noted, $V_{IN} = V_{BATT} = 3.6V$. Typical values and limits appearing in normal type apply for $T_J = 25^\circ C$. Limits appearing in **boldface** type apply over the entire junction temperature range for operation, -40 to $+125^\circ C$. (Notes 2, 8, 9)

Symbol	Parameter	Condition	Min	Typ	Max	Units
V _{OUT} Accuracy	Output Voltage	$1\text{ mA} \leq I_{OUT} \leq 150\text{ mA}$, $V_{OUT} = 2.7V$ $3.0V \leq V_{BATT} = V_{IN} \leq 5.5V$	-3	± 1.0	+3	%
V _{OUT} Range	Programmable Output Voltage Range	$0\text{ }\mu A \leq I_{OUT} \leq 150\text{ mA}$ Programming Resolution = 100 mV	2.5	3.0	3.2	V
I _{OUT}	Output Current	$(V_{OUT} + 0.25V, 3.0V)_{MAX} \leq V_{BATT}$ $V_{BATT} = V_{IN} \leq 5.5V$			150	mA
	Output Current Limit	$V_{OUT} = 0V$		500		
V _{IN} -V _{OUT}	Dropout Voltage	$I_{OUT} = 75\text{ mA}$		30	173	mV
ΔV_{OUT}	Line Regulation	$(V_{OUT} + 0.25V, 3.0V)_{MAX} \leq V_{BATT}$ $V_{BATT} = V_{IN} \leq 5.5V$, $I_{OUT} = 75\text{ mA}$		3		mV
	Load Regulation	$V_{IN} = 3.6V$, $1\text{ mA} \leq I_{OUT} \leq 150\text{ mA}$		10	41	
e _N	Output Noise Voltage	$10\text{ Hz} \leq f \leq 100\text{ kHz}$, $C_{OUT} = 2.2\text{ }\mu F$		27		μV_{RMS}
PSRR	Power Supply Ripple Rejection Ratio	$f = 217\text{ Hz}$, $C_{OUT} = 2.2\text{ }\mu F$		57		dB
I _{GND}	Ground Current	$I_{OUT} = 100\text{ }\mu A$		30		μA
C _{OUT}	Output Capacitance Output Capacitor ESR	$0\text{ }\mu A \leq I_{OUT} \leq 150\text{ mA}$	2		20	μF
			5		500	m Ω
t _{START-UP}	Start-Up Time from Shutdown	$C_{OUT} = 2.2\text{ }\mu F$, $I_{OUT} = 150\text{ mA}$ Note 10		60		μs

V_{O8} LDO Electrical Characteristics

Unless otherwise noted, $V_{IN} = V_{BATT} = 3.6V$. Typical values and limits appearing in normal type apply for $T_J = 25^\circ C$. Limits appearing in **boldface** type apply over the entire junction temperature range for operation, -40 to $+125^\circ C$. (Notes 2, 8, 9)

Symbol	Parameter	Condition	Min	Typ	Max	Units
V _{OUT} Accuracy	Output Voltage	$1\text{ mA} \leq I_{OUT} \leq 150\text{ mA}$, $V_{OUT} = 2.7V$ $3.0V \leq V_{BATT} = V_{IN} \leq 5.5V$	-3	± 1.0	+3	%
V _{OUT} Range	Programmable Output Voltage Range	$0\text{ }\mu A \leq I_{OUT} \leq 150\text{ mA}$ Programming Resolution = 100 mV	2.5	3.0	3.2	V
I _{OUT}	Output Current	$(V_{OUT} + 0.25V, 3.0V)_{MAX} \leq V_{BATT}$ $V_{BATT} = V_{IN} \leq 5.5V$			150	mA
	Output Current Limit	$V_{OUT} = 0V$		510		
V _{IN} -V _{OUT}	Dropout Voltage	$I_{OUT} = 75\text{ mA}$		30	173	mV
ΔV_{OUT}	Line Regulation	$(V_{OUT} + 0.25V, 3.0V)_{MAX} \leq V_{BATT}$ $V_{BATT} = V_{IN} \leq 5.5V$, $I_{OUT} = 75\text{ mA}$		3		mV
	Load Regulation	$V_{IN} = 3.6V$, $1\text{ mA} \leq I_{OUT} \leq 150\text{ mA}$		12	41	
e _N	Output Noise Voltage	$10\text{ Hz} \leq f \leq 100\text{ kHz}$, $C_{OUT} = 2.2\text{ }\mu F$		27		μV_{RMS}
PSRR	Power Supply Ripple Rejection Ratio	$f = 217\text{ Hz}$, $C_{OUT} = 2.2\text{ }\mu F$		57		dB
I _{GND}	Ground Current	$I_{OUT} = 100\text{ }\mu A$		30		μA
C _{OUT}	Output Capacitance Output Capacitor ESR	$0\text{ }\mu A \leq I_{OUT} \leq 150\text{ mA}$	2		20	μF
			5		500	m Ω
t _{START-UP}	Start-Up Time from Shutdown	$C_{OUT} = 2.2\text{ }\mu F$, $I_{OUT} = 150\text{ mA}$ (Note 10)		60		μs

V_{O9} LDO Electrical Characteristics

Unless otherwise noted, $V_{IN} = V_{BATT} = 3.6V$. Typical values and limits appearing in normal type apply for $T_J = 25^\circ C$. Limits appearing in **boldface** type apply over the entire junction temperature range for operation, -40 to $+125^\circ C$. (Notes 2, 8, 9)

Symbol	Parameter	Condition	Min	Typ	Max	Units
V _{OUT} Accuracy	Output Voltage	$1\text{ mA} \leq I_{OUT} \leq 200\text{ mA}$, $V_{OUT} = 2.2V$ $3.0V \leq V_{BATT} = V_{IN} \leq 5.5V$	-3	± 1.0	+3	%
V _{OUT} Range	Programmable Output Voltage Range	$0\text{ }\mu A \leq I_{OUT} \leq 200\text{ mA}$ Programming Resolution = 100 mV	1.5	3.0	3.0	V
I _{OUT}	Output Current	$(V_{OUT} + 0.25V, 3.0V)_{MAX} \leq V_{BATT}$ $V_{BATT} = V_{IN} \leq 5.5V$			200	mA
	Output Current Limit	$V_{OUT} = 0V$		770		
V _{IN} -V _{OUT}	Dropout Voltage	$I_{OUT} = 100\text{ mA}$		50	288	mV
ΔV_{OUT}	Line Regulation	$(V_{OUT} + 0.25V, 3.0V)_{MAX} \leq V_{BATT}$ $V_{BATT} = V_{IN} \leq 5.5V$, $I_{OUT} = 100\text{ mA}$		3		mV
	Load Regulation	$V_{IN} = 3.6V$, $1\text{ mA} \leq I_{OUT} \leq 200\text{ mA}$		15	44	
e _N	Output Noise Voltage	$10\text{ Hz} \leq f \leq 100\text{ kHz}$, $C_{OUT} = 4.7\text{ }\mu F$		27		μV_{RMS}
PSRR	Power Supply Ripple Rejection Ratio	$f = 217\text{ Hz}$, $C_{OUT} = 4.7\text{ }\mu F$		60		dB
I _{GND}	Ground Current	$I_{OUT} = 100\text{ }\mu A$		30		μA
C _{OUT}	Output Capacitance Output Capacitor ESR	$1\text{ }\mu A \leq I_{OUT} \leq 200\text{ mA}$	2		20	μF
			5		500	m Ω
t _{START-UP}	Start-Up Time from Shutdown	$C_{OUT} = 4.7\text{ }\mu F$, $I_{OUT} = 200\text{ mA}$ (Note 10)		60		μs

V_{O10} LDO Electrical Characteristics

Unless otherwise noted, $V_{IN} = V_{BATT} = 3.6V$. Typical values and limits appearing in normal type apply for $T_J = 25^\circ C$. Limits appearing in **boldface** type apply over the entire junction temperature range for operation, -40 to $+125^\circ C$. (Notes 2, 8, 9)

Symbol	Parameter	Condition	Min	Typ	Max	Units
V_{OUT} Accuracy	Output Voltage	$1\text{ mA} \leq I_{OUT} \leq 150\text{ mA}$, $V_{OUT} = 2.2V$ $3.0V \leq V_{BATT} = V_{IN} \leq 5.5V$	-3	± 1.0	+3	%
V_{OUT} Range	Programmable Output Voltage Range	$0\text{ }\mu A \leq I_{OUT} \leq 150\text{ mA}$ Programming Resolution = 100 mV	1.5	2.5	3.0	V
I_{OUT}	Output Current	$(V_{OUT} + 0.25V, 3.0V)_{MAX} \leq V_{BATT}$ $V_{BATT} = V_{IN} \leq 5.5V$			150	mA
	Output Current Limit	$V_{OUT} = 0V$		610		
$V_{IN}-V_{OUT}$	Dropout Voltage	$I_{OUT} = 75\text{ mA}$		30	204	mV
ΔV_{OUT}	Line Regulation	$(V_{OUT} + 0.25V, 3.0V)_{MAX} \leq V_{BATT}$ $V_{BATT} = V_{IN} \leq 5.5V$, $I_{OUT} = 75\text{ mA}$		3		mV
	Load Regulation	$V_{IN} = 3.6V$, $1\text{ mA} \leq I_{OUT} \leq 150\text{ mA}$		12	41	
e_N	Output Noise Voltage	$10\text{ Hz} \leq f \leq 100\text{ kHz}$, $C_{OUT} = 2.2\text{ }\mu F$		27		μV_{RMS}
PSRR	Power Supply Ripple Rejection Ratio	$f = 217\text{ Hz}$, $C_{OUT} = 2.2\text{ }\mu F$		57		dB
I_{GND}	Ground Current	$I_{OUT} = 100\text{ }\mu A$		30		μA
C_{OUT}	Output Capacitance Output Capacitor ESR	$0\text{ }\mu A \leq I_{OUT} \leq 150\text{ mA}$	2		20	μF
			5		500	m Ω
$t_{START-UP}$	Start-Up Time from Shutdown	$C_{OUT} = 2.2\text{ }\mu F$, $I_{OUT} = 150\text{ mA}$ (Note 10)		60		μs

V_{O11} LDO Electrical Characteristics

Unless otherwise noted, $V_{IN} = V_{BATT} = 3.6V$. Typical values and limits appearing in normal type apply for $T_J = 25^\circ C$. Limits appearing in **boldface** type apply over the entire junction temperature range for operation, -40 to $+125^\circ C$. (Notes 2, 8, 10)

Symbol	Parameter	Condition	Min	Typ	Max	Units
V_{OUT} Accuracy	Output Voltage	$1\text{ mA} \leq I_{OUT} \leq 200\text{ mA}$, $V_{OUT} = 2.7V$ $3.0V \leq V_{BATT} = V_{IN} \leq 5.5V$	-2	± 2.0	+5	%
V_{OUT} Range	Programmable Output Voltage Range	$0\text{ }\mu A \leq I_{OUT} \leq 200\text{ mA}$ Programming Resolution = 100 mV	1.8	1.8	3.3	V
I_{OUT}	Output Current	$(V_{OUT} + 0.25V, 3.0V)_{MAX} \leq V_{BATT}$ $V_{BATT} = V_{IN} \leq 5.5V$			200	mA
	Output Current Limit	$V_{OUT} = 0V$		900		
$V_{IN}-V_{OUT}$	Dropout Voltage	$I_{OUT} = 100\text{ mA}$		50	302	mV
ΔV_{OUT}	Line Regulation	$(V_{OUT} + 0.25V, 3.0V)_{MAX} \leq V_{BATT}$ $V_{BATT} = V_{IN} \leq 5.5V$, $I_{OUT} = 100\text{ mA}$		3		mV
	Load Regulation	$V_{IN} = 3.6V$, $1\text{ mA} \leq I_{OUT} \leq 200\text{ mA}$		15	44	
e_N	Output Noise Voltage	$10\text{ Hz} \leq f \leq 100\text{ kHz}$, $C_{OUT} = 4.7\text{ }\mu F$		27		μV_{RMS}
PSRR	Power Supply Ripple Rejection Ratio	$f = 217\text{ Hz}$, $C_{OUT} = 4.7\text{ }\mu F$		60		dB
I_{GND}	Ground Current	$I_{OUT} = 100\text{ }\mu A$		30		μA
C_{OUT}	Output Capacitance Output Capacitor ESR	$1\text{ mA} \leq I_{OUT} \leq 200\text{ mA}$	2		20	μF
			5		500	m Ω
$t_{START-UP}$	Start-Up Time from Shutdown	$C_{OUT} = 4.7\text{ }\mu F$, $I_{OUT} = 200\text{ mA}$ (Note 10)		60		μs

V_{RTC} LDO Electrical Characteristics

Unless otherwise noted, $2.5V < V_{BU_BAT} < 3.3V$. Typical values and limits appearing in normal type apply for $T_J = 25^\circ C$. Limits appearing in **boldface** type apply over the entire junction temperature range for operation, -40 to $+125^\circ C$. (Notes 2, 8, 9)

Symbol	Parameter	Condition	Min	Typ	Max	Units
V _{OUT} Accuracy	Output Voltage	$I_{OUT} \leq 50 \mu A$, $V_{OUT} = 1.8V$ $2.15V \leq V_{BU_BAT} \leq 3.3V$	1.6	1.8	2.0	V
I _Q	Quiescent Current	$I_{OUT} = 6 \mu A$		2.6	6	μA
I _{OUT}	Output Current	$2.15V \leq V_{BU_BAT} \leq 3.3V$		10	50	μA
	Output Current Limit	$V_{OUT} = 0V$	1000	2000	10000	
V _{IN} -V _{RTC}	Dropout Voltage	$I_{OUT} = 50 mA$		150	190	mV
PSRR	Power Supply Ripple Rejection Ratio	$f = 100 Hz$, $C_{OUT} = 1.0 \mu F$		20		dB
C _{OUT}	Output Capacitance	$1 mA \leq I_{OUT} \leq 200 mA$	0.75	1.0	2.2	μF
	Output Capacitor ESR		5		500	m Ω

Note: The RTC_LDO can be disabled via the I²C compatible interface by setting the corresponding disable bit. See Table 1 for further details.

Back-Up Charger Electrical Characteristics

Unless otherwise noted, $V_{IN} = V_{BATT} = 3.6V$. Typical values and limits appearing in normal type apply for $T_J = 25^\circ C$. Limits appearing in **boldface** type apply over the entire junction temperature range for operation, -40 to $+125^\circ C$. (Notes 2, 8, 9)

Symbol	Parameter	Condition	Min	Typ	Max	Units
V _{IN}	Operational Voltage Range			V _{OUT} + 0.4	5.5	V
V _{OUT} Accuracy	Output Voltage	$I_{OUT} \leq 50 \mu A$, $V_{OUT} = 3.15V$ $V_{OUT} + 0.4 \leq V_{BATT} \leq 5.5V$	3.0	3.15	3.3	V
I _Q	Quiescent Current	$I_{OUT} < 50 \mu A$		25		μA
I _{OUT}	Output Current	$V_{OUT} + 0.4 \leq V_{BATT} = V_{IN} \leq 5.5V$, $V_{OUT} = 3.0V$		70	150	μA
	Output Current Limit	$3.2V \leq V_{BATT} = V_{IN} \leq 5.5V$ $V_{OUT} = 0V$	0.7	1.5	2	mA
PSRR	Power Supply Ripple Rejection Ratio	$I_{OUT} \leq 50 \mu A$, $V_{OUT} = 3.15V$ $V_{OUT} + 0.4 \leq V_{BATT} = V_{IN} \leq 5.5V$ $f < 10 kHz$		15		dB
C _{OUT}	Output Capacitance	$0 \mu A \leq I_{OUT} \leq 100 \mu A$		0.1		μF
	Output Capacitor ESR		5		500	m Ω

Note: The back-up battery charger can be disabled by setting the corresponding enable bit '0' via the I²C interface. See Table 1 for further details.

Comparators' Electrical Characteristics

Unless otherwise noted, $V_{BATT} = +2.5V$ to $5.5V$, $V_{O3} = 3.0V$, $V_{CM} = 0.27V$. Typical values and limits appearing in normal type apply for $T_J = 25^\circ C$. Limits appearing in **boldface** type apply over the entire junction temperature range for operation, -40 to $+125^\circ C$. (Notes 2, 8, 9)

Symbol	Parameter	Condition	Min	Typ	Max	Units
V _T	Comparator Trip Voltage		230	270	300	mV
I _B	Input Bias Current	$V_{INV} = 1.3V$		0.01	0.15	μA
I _{OS}	Input Offset Current			1		nA
PSRR	Power Supply Rejection Ratio	$2.7V \leq V_{BATT} \leq 5.5V$		50		dB
V _{OL}	Output Voltage Low	$I_{SINK} = 1 mA$		0.24	0.37	V
V _{OH}	Output Voltage High	$I_{SOURCE} = 1 mA$	2.57	V _{O3} -0.25	3	V
t _{PLH}	Propagation Delay Low to High	Overdrive = 100 mV (Note 10)		5		μs
t _{PHL}	Propagation Delay High to Low	Overdrive = 100 mV (Note 10)		5		μs
t _{LH}	Rise Time Low to High	Overdrive = 100 mV $C_{OUT} = 10 pF$ (Note 10)		5		ns
t _{HL}	Fall Time High to Low	Overdrive = 100 mV $C_{OUT} = 10 pF$ (Note 10)		5		ns

Comparators' Electrical Characteristics (Continued)

Unless otherwise noted, $V_{BATT} = +2.5V$ to $5.5V$, $V_{O3} = 3.0V$, $V_{CM} = 0.27V$. Typical values and limits appearing in normal type apply for $T_J = 25^\circ C$. Limits appearing in **boldface** type apply over the entire junction temperature range for operation, -40 to $+125^\circ C$. (Notes 2, 8, 9)

Symbol	Parameter	Condition	Min	Typ	Max	Units
I_Q	Quiescent Current per Comparator			5		μA

Note: Comparator output buffers are powered by LDO3 output voltage.

RESET Electrical Characteristics

Unless otherwise noted, $V_{BATT} = +2.5V$ to $5.5V$. Typical values and limits appearing in normal type apply for $T_J = 25^\circ C$. Limits appearing in **boldface** type apply over the entire junction temperature range for operation, -40 to $+125^\circ C$. (Notes 2, 8, 9)

Symbol	Parameter	Condition	Min	Typ	Max	Units
V_{OH}	Output Voltage High	Internal Logic Supply $I_{SOURCE} = 0 \mu A$	$V_{O3} - 0.2$			V
V_{OL}	Output Voltage Low	Internal Logic Supply $I_{SINK} = 500 \mu A$			0.4	V
V_{TSHLD}	V_{O1} Threshold	V_{O1} Rising	90	93	96	%
		V_{O1} Falling	82	85	88	%
t_{DELAY}	RESET Active Time-Out Period	From $V_{O1} \geq 93\%$ until $\overline{RESET} = \text{High}$	34	40	47	ms
$t_{PS-HOLD}$	PS-HOLD Timer	From $\overline{RESET} = \text{Hi}$ to $\overline{PS-HOLD} = \text{Hi}$ From $\overline{PS-HOLD} = \text{Low}$ to $\overline{RESET} = \text{Low}$	29	35	41	ms
t_{RESET}	Shut-Down Timer	From $\overline{RESET} = \text{Low}$ until LDOs turned off (no output regulation)	51	60	70	ms
R_{PU}	Pull-up Resistance to V_{O1}			14		k Ω
I_{S-MAX}	Maximum Sink Current				5	mA

LED Driver Electrical Characteristics

Unless otherwise noted, $V_{BATT} = +2.5V$ to $5.5V$. Typical values and limits appearing in normal type apply for $T_J = 25^\circ C$. Limits appearing in **boldface** type apply over the entire junction temperature range for operation, -40 to $+125^\circ C$. (Notes 2, 8, 9)

Symbol	Parameter	Condition	Min	Typ	Max	Units
V_{OL}	LED1–3 Output Low Level	$I_{SINK} = 40 \text{ mA}$		0.17	0.55	V
$I_{LEAKAGE}$	LED1–3 Off Leakage Current	$V_{DR} = 5.5V$		4		μA

Main Battery Charger Electrical Characteristics

Unless otherwise noted, $V_{CHG-IN} = 5V$, $V_{BATT} = 4V$. Typical values and limits appearing in normal type apply for $T_J = 25^\circ C$. Limits appearing in **boldface** type apply over the entire junction temperature range for operation, -40 to $+125^\circ C$. (Notes 2, 9, 8, 12)

Symbol	Parameter	Condition	Min	Typ	Max	Units
V_{CHG-IN}	Input Voltage Range		4.5		12	V
	Operating Range	Battery Connected	4.5		6	
$V_{OK-TSHD}$	Adapter OK Trip Point (CHG-IN)	$V_{CHG-IN} - V_{BATT}$ Rising		80		mV
		$V_{CHG-IN} - V_{BATT}$ Falling		30		mV
$V_{UVLO-TSHD}$	Under Voltage Lock-Out Trip Point	V_{CHG-IN} Rising	3.85	4.25	4.65	V
		V_{CHG-IN} Falling		3.90		V
$V_{OVLO-TSHD}$	Over Voltage Lock-Out Trip Point	V_{CHG-IN} Rising	5.46	6.00	6.54	V
		V_{CHG-IN} Falling		5.80		V
$I_{BATTSense}$	Leakage Current	$V_{BATT} = 4.2V$		8		μA
I_{BATT}	Battery Input Current	$V_{CHG-IN} \leq 4V$		2		μA
		Charging Complete, charger connected, $V_{BATT} = 4.1V$			150	μA

Main Battery Charger Electrical Characteristics (Continued)

Unless otherwise noted, $V_{CHG-IN} = 5V$, $V_{BATT} = 4V$. Typical values and limits appearing in normal type apply for $T_J = 25^\circ C$. Limits appearing in **boldface** type apply over the entire junction temperature range for operation, -40 to $+125^\circ C$. (Notes 2, 9, 8, 12)

Symbol	Parameter	Condition	Min	Typ	Max	Units
I_{CHG}	Fast Charge Current Accuracy	$I_{CHG} = 700\text{ mA}$	-10	± 5	+10	%
	Fast Charge Current Range		478		937	mA
	Programmable Charging Current Step			43		mA
$I_{PRE-CHG}$	Pre-Charge Current	$V_{BATT} = 2V$	28	42	59	mA
R_{SENSE}	Internal Current Sense Resistance			120		m Ω
	Internal Current Sense Resistor Load Current				1.2	A

CHARGING PERFORMANCE

V_{BATT}	Battery Regulation Voltage (CV Mode, for 4.1V Cell)	$T_A -40^\circ C$ to $+85^\circ C$	4.015	4.1	4.19	
	Battery Regulation Voltage CV mode, for 4.2V Cell)	$T_A -40^\circ C$ to $+85^\circ C$	4.115	4.2	4.289	
V_{CHG-Q}	Full Charge Qualification Threshold	V_{BATT} Rising, Transition from Pre-Charge to Full Current	2.8	3.0	3.2	V
$V_{BAT-RST}$	Restart Threshold Voltage (For 4.1V Cell)	V_{BATT} Falling, Transition from EOC, to Pre-Qual State		3.9		V
	Restart Threshold Voltage (For 4.2 Cell)	V_{BATT} Falling, Transition from EOC, to Pre-Qual State		4.0		
t_{EOC}	Time to EOC State	$-40^\circ C$ to $+85^\circ C$ (Note 10)	4.80	5.625	6.55	Hrs

A/D CONVERTER PERFORMANCE

	Resolution			8		Bits
INL	Relative Accuracy		-1		+1	LSB
DNL	Differential Nonlinearity	No Missing Code	-1		+1	LSB

Note: While charging a Li-Ion battery with this charger is possible in cold temperatures (generally below $-5^\circ C$ – $0^\circ C$) is possible with the LP3941A, charging a battery outside its manufacturer recommended temperature limits is strongly discouraged.

I²C Compatible Interface Electrical Characteristics

Unless otherwise noted, $V_{BATT} = +2.5V$ to $5.5V$. Typical values and limits appearing in normal type apply for $T_J = 25^\circ C$. Limits appearing in **boldface** type apply over the entire junction temperature range for operation, -40 to $+125^\circ C$. (Notes 2, 8, 9)

Symbol	Parameter	Condition	Min	Typ	Max	Units
F_{CLK}	Clock Frequency				400	kHz
t_{BF}	Bus-Free Time between START and STOP	(Note 10)	1.3			μs
t_{HOLD}	Hold Time Repeated START Condition	(Note 10)	0.6			μs
t_{CLK-LP}	CLK Low Period	(Note 10)	1.3			μs
t_{CLK-HP}	CLK High Period	(Note 10)	0.6			μs
t_{SU}	Set-Up Time Repeated START Condition	(Note 10)	0.6			μs
$t_{DATA-HOLD}$	Data Hold Time	(Note 10)	0			μs
$t_{DATA-SU}$	Data Set-Up Time	(Note 10)	100			ns
t_{SU}	Set-Up Time for STOP Condition	(Note 10)	0.6			μs
t_{TRANS}	Maximum Pulse Width of Spikes that must be suppressed by the input filter of both DATA & CLK signals.	(Note 10)		50		ns

Note 1: Absolute Maximum Ratings are limits beyond which damage to the device may occur. Operating Ratings are conditions under which operation of the device is guaranteed. Operating Ratings do not imply guaranteed performance limits. For guaranteed performance limits and associated test conditions, see the Electrical Characteristics tables.

Note 2: All voltages are with respect to the potential at the GND pin.

Note 3: The amount of Absolute Maximum power dissipation allowed for the device depends on the ambient temperature and can be calculated using the formula

I²C Compatible Interface Electrical Characteristics (Continued)

$$P = (T_J - T_A) / \theta_{JA}, \quad (1)$$

where T_J is the junction temperature, T_A is the ambient temperature, and θ_{JA} is the junction-to-ambient thermal resistance.

Junction-to-ambient thermal resistance is highly application and board-layout dependent. In applications where high maximum power dissipation exists, special care must be paid to thermal dissipation issues in board design.

Internal thermal shutdown circuitry protects the device from permanent damage. Thermal shutdown engages at $T_J = 150^\circ\text{C}$ (typ.) and disengages at $T_J = 140^\circ\text{C}$ (typ.).

Note 4: For detailed soldering specifications and information, please refer to National Semiconductor Application Note 1187: Leadless Leadframe Package (LLP) (AN-1187).

Note 5: The Human body model is a 100 pF capacitor discharged through a 1.5 k Ω resistor into each pin. (MIL-STD-883 3015.7) The machine model is a 200 pF capacitor discharged directly into each pin. (EAIJ)

Note 6: In applications where high power dissipation and/or poor package thermal resistance is present, the maximum ambient temperature may have to be derated. Maximum ambient temperature (T_{A-MAX}) is dependent on the maximum operating junction temperature ($T_{J-MAX-OP} = 125^\circ\text{C}$), the maximum power dissipation of the device in the application (P_{D-MAX}), and the junction-to ambient thermal resistance of the part/package in the application (θ_{JA}), as given by the following equation: $T_{A-MAX} = T_{J-MAX-OP} - (\theta_{JA} \times P_{D-MAX})$.

Note 7: Junction-to-ambient thermal resistance (θ_{JA}) is taken from a thermal modeling result, performed under the conditions and guidelines set forth in the JEDEC standard JESD51-7. The test board is a 4-layer FR-4 board measuring 102 mm x 76 mm x 1.6 mm with a 2x1 array of thermal vias. The ground plane on the board is 50 mm x 50 mm. Thickness of copper layers are 36 μm /1.8 μm /18 μm /36 μm (1.5 oz/1 oz/1 oz/1.5 oz). Ambient temperature in simulation is 22°C , still air. Power dissipation is 1W.

Junction-to-ambient thermal resistance is highly application and board-layout dependent. In applications where high maximum power dissipation exists, special care must be paid to thermal dissipation issues in board design.

The value of θ_{JA} of this product can vary significantly, depending on PCB material, layout, and environmental conditions. In applications where high maximum power dissipation exists (high V_{IN} , high I_{OUT}), special care must be paid to thermal dissipation issues. For more information on these topics, please refer to *Application Note 1187: Leadless Leadframe Package (LLP) and the Power Efficiency and Power Dissipation* section of this datasheet.

Note 8: All limits are guaranteed by design, test and/or statistical analysis. All electrical characteristics having room-temperature limits are tested during production with $T_J = 25^\circ\text{C}$. All hot and cold limits are guaranteed by correlating the electrical characteristics to process and temperature variations and applying statistical process control.

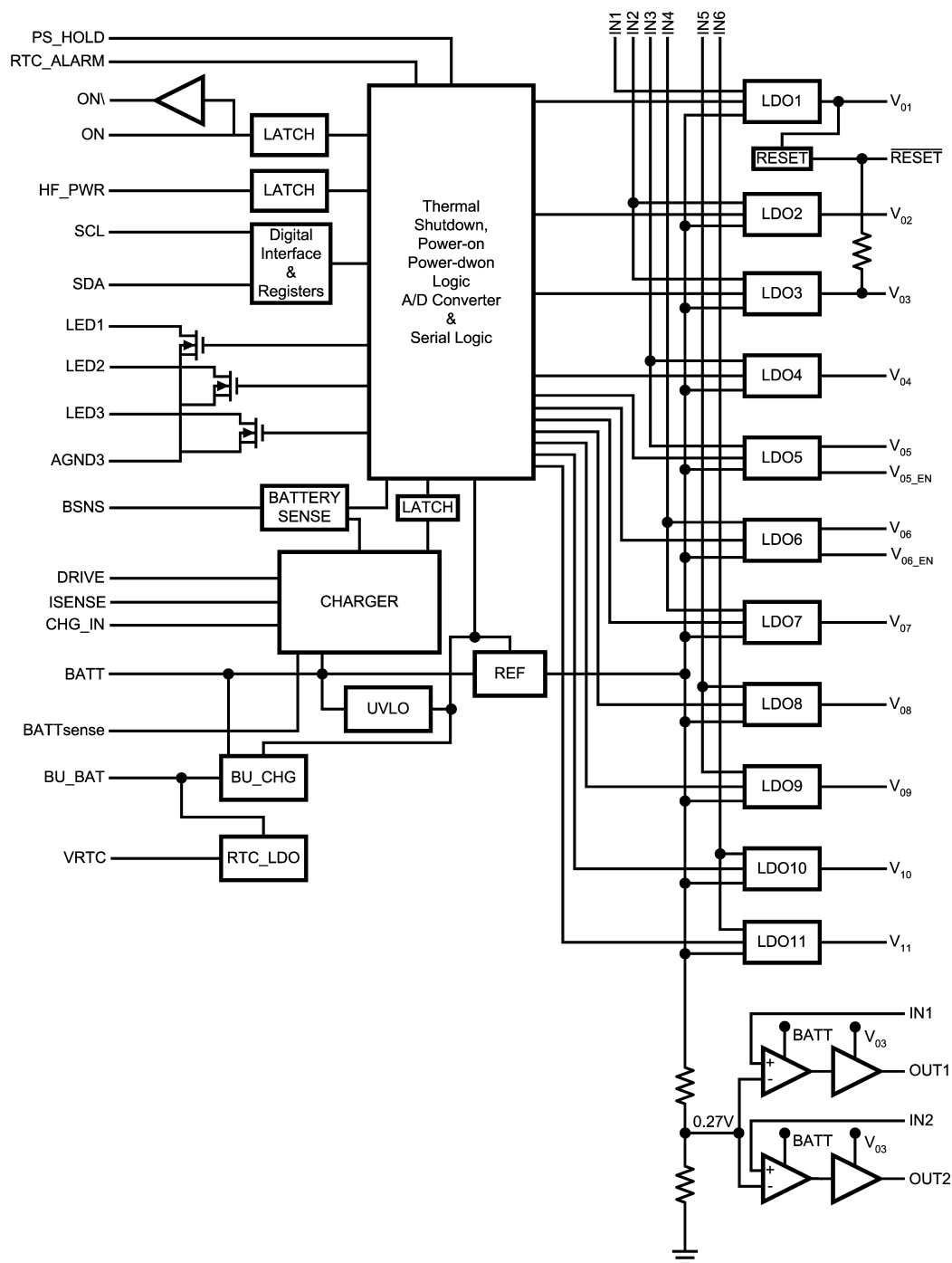
Note 9: Capacitors: Low-ESR Surface-Mount Ceramic Capacitors are (MLCCs) used in setting electrical characteristics.

Note 10: Guaranteed by design.

Note 11: Dropout voltage is the input-to-output voltage difference at which the output voltage is 100 mV below its nominal value. This specification does not apply in cases it implies operation with an input voltage below the 3.0V minimum appearing under Operating Ratings. For example, this specification does not apply for devices having 1.5V outputs because the specification would imply operation with an input voltage at or about 1.5V.

Note 12: LP3941A is not intended as a Li-Ion battery protection device. Battery used in this application should have an adequate internal protection.

LP3941A Simplified Block Diagram

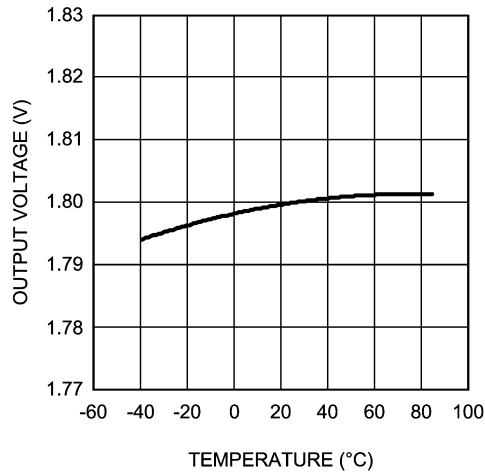


20094504

Typical Performance Characteristics

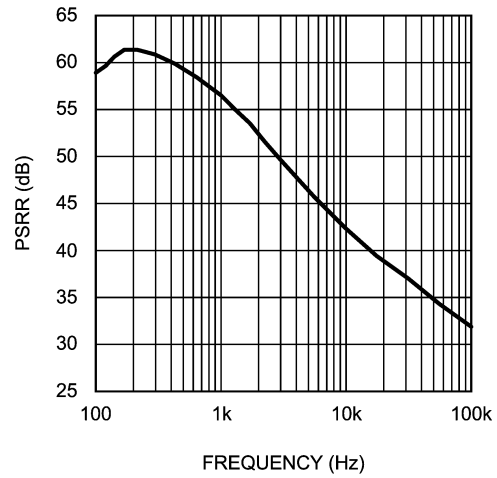
Under nominal conditions. This means, unless otherwise noted, $T_A = 25^\circ\text{C}$, $V_{\text{BATT}} = 3.6\text{V}$, $V_{\text{BU_BATT}} = 3.15\text{V}$.

200 mA LDO Output Voltage



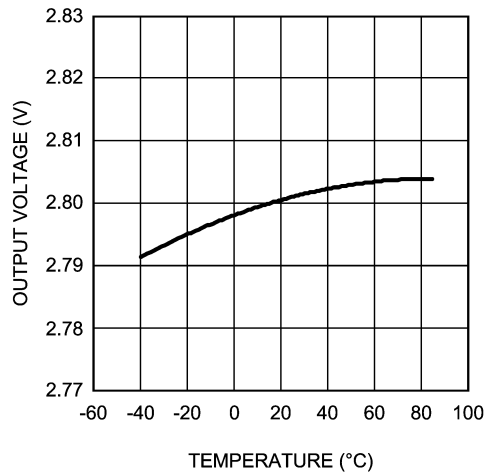
20094506

200 mA LDO PSRR



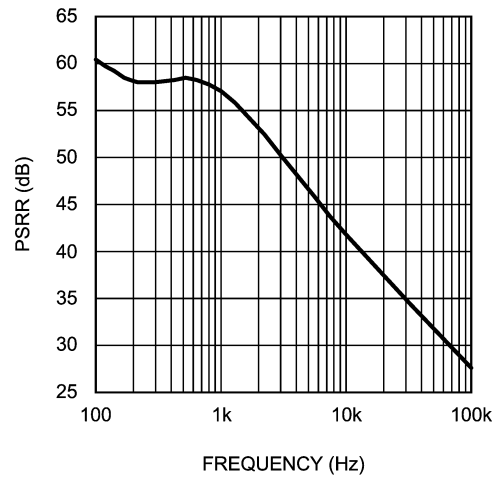
20094509

150 mA LDO Output Voltage



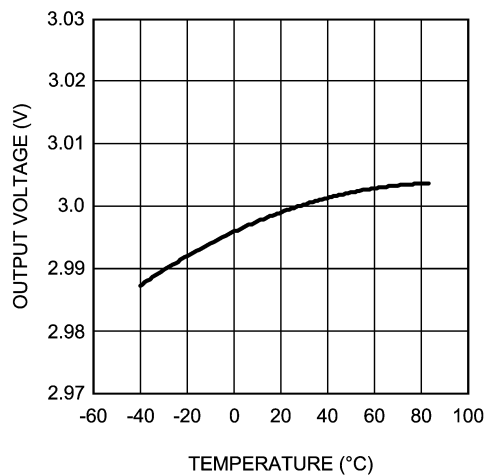
20094505

150 mA LDO PSRR



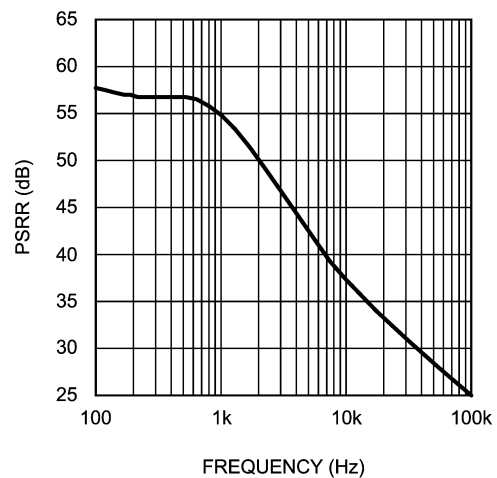
20094508

50 mA LDO Output Voltage



20094507

50 mA LDO PSRR

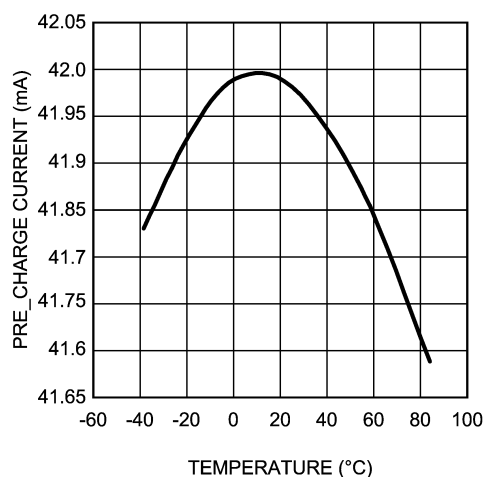


20094510

Typical Performance Characteristics

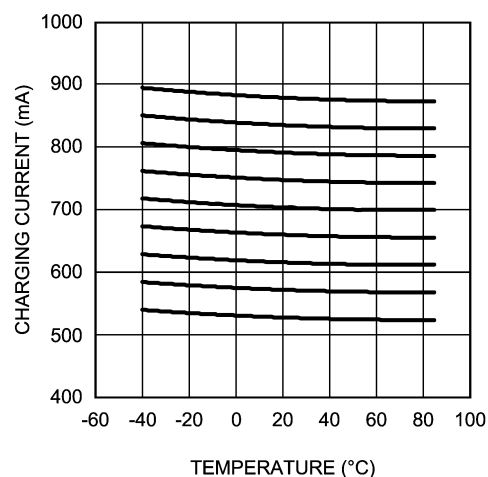
Under nominal conditions. This means, unless otherwise noted, $T_A = 25^\circ\text{C}$, $V_{\text{BATT}} = 3.6\text{V}$, $V_{\text{BU_BATT}} = 3.15\text{V}$. (Continued)

Pre-Charge Current



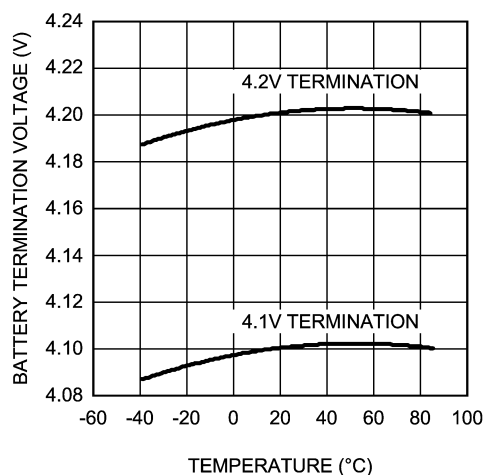
20094516

Fast Charging Current



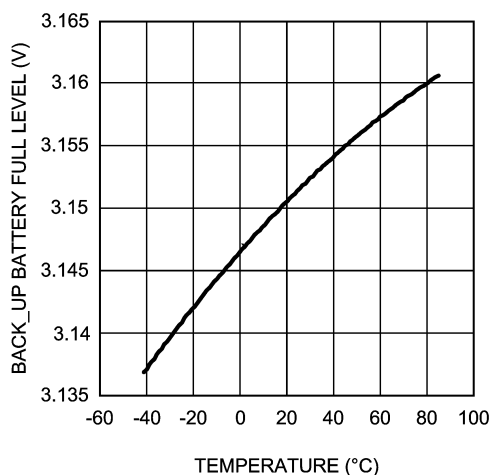
20094515

Charging Termination Voltage



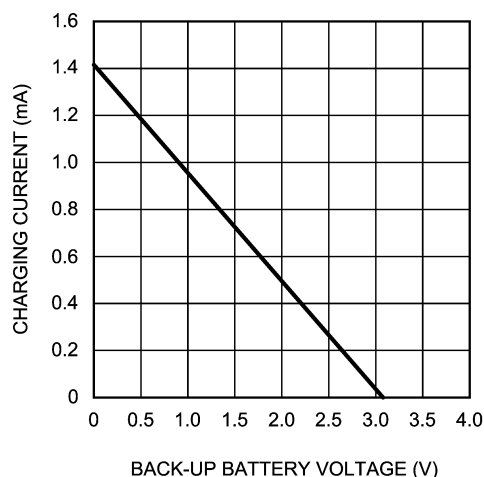
20094514

Back-Up Battery Full Voltage



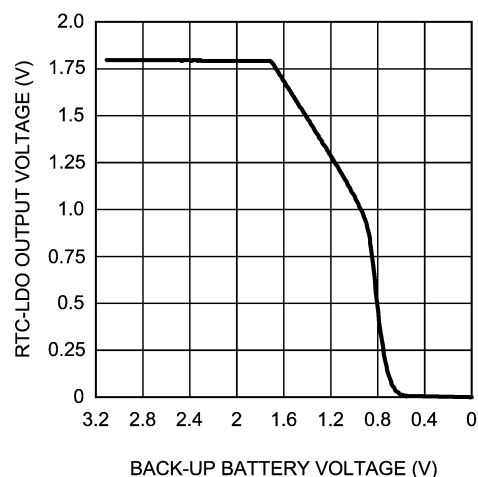
20094513

Back-Up Battery Charging Current



20094512

RTC-LDO Output Voltage



20094511

LP3941A Serial Port Communication Address Code 7h'7E

Numbers in parentheses indicate default setting: (0) bit is set to low state, and (1) bit is set to high state. R/O –Read Only, All other bits are Read and Write.

TABLE 1. LP3941 Control and Data Codes

Addr	Register	7	6	5	4	3	2	1	0
8h'00	Enable	LDO7–EN (0)	LDO6–EN (0)	LDO5–EN (1)	LDO4–EN (0)	LDO3–EN (1)	LDO2–EN (0)	LDO1–EN (1)	LDO8–EN (0)
8h'01	LDO9/ LDO1 Data Code	LDO9 Code 3 (1)	LDO9 Code 2 (1)	LDO9 Code 1 (1)	LDO9 Code 0 (1)	LDO1 Code 3 (0)	LDO1 Code 2 (0)	LDO1 Code 1 (1)	LDO1 Code 0 (1)
8h'02	LDO10/ LDO2 Data Code	LDO10 Code 3 (1)	LDO10 Code 2 (0)	LDO10 Code 1 (1)	LDO10 Code 0 (0)	LDO2 Code 3 (1)	LDO2 Code 2 (1)	LDO2 Code 1 (0)	LDO2 Code 0 (1)
8h'03	LDO8/ LDO3 Data Code	Not Used (0)	LDO8 Code 2 (1)	LDO8 Code 1 (0)	LDO8 Code 0 (1)	Not Used (0)	LDO3 Code 2 (1)	LDO3 Code 1 (0)	LDO3 Code 0 (1)
8h'04	LDO11/ LDO4 Data Code	LDO11 Code 3 (0)	LDO11 Code 2 (0)	LDO11 Code 1 (0)	LDO11 Code 0 (0)	LDO4 Code 3 (1)	LDO4 Code 2 (1)	LDO4 Code 1 (1)	LDO4 Code 0 (1)
8h'05	LDO5 Data Code	Not Used (0)	Not Used (0)	Not Used (0)	Not Used (0)	Not Used (0)	LDO5 Code 2 (0)	LDO5 Code 1 (1)	LDO5 Code 0 (1)
8h'06	LDO6 Data Code	Not Used (0)	Not Used (0)	Not Used (0)	Not Used (0)	Not Used (0)	LDO6 Code 2 (0)	LDO6 Code 1 (1)	LDO6 Code 0 (1)
8h'07	LDO7 Data Code	Not Used (0)	Not Used (0)	Not Used (0)	Not Used (0)	Not Used (0)	LDO7 Code 2 (1)	LDO7 Code 1 (0)	LDO7 Code 0 (1)
8h'08	Charger Register –1	Not Used (0)	Not Used (0)	Not Used (0)	4.1V/4.2V (1)	Charger Current Code 3 (0)	Charger Current Code 2 (0)	Charger Current Code 1 (0)	Charger Current Code 0 (1)
8h'09	Charger Register –2	Not Used (0)	Not Used (0)	Not Used (0)	EOC R/O	Charging R/O	EOC Sel-1 (0)	EOC Sel-0 (1)	Charger- DIS Off/On (0)
8h'0a	Control/ Enable	LDO9-EN (0)	LDO10-EN (0)	LDO11-EN (0)	Back-Up Battery Charger Enable (1)	RTC_LDO Disable (0)	LED1 Enable (0)	LED2 Enable (0)	LED3 Enable (0)
8h'0b	ADC Control Register	Not Used (0)	Not Used (0)	Not Used (0)	Not Used (0)	ADC Start (0)	ADC EN (0)	ADC Mux-1 (1)	ADC Mux-0 (1)
8h'0c	ADC Output Register	ADC7 R/O	ADC6 R/O	ADC5 R/O	ADC4 R/O	ADC3 R/O	ADC2 R/O	ADC1 R/O	ADC0 R/O
8h'0d	Power-On- Reason Register	R/O (0)	R/O (0)	R/O (0)	R/O (0)	ON R/O	RTC ALARM R/O	CHG_IN R/O	HF_PWR R/O
8h'2e	ADC/ Status Register	COMP2 OUT R/O	COMP1 OUT R/O	ON R/O	RTC Alarm R/O	Charger Present R/O	HF_PWR R/O	ADC Overflow R/O	ADC Data Ready R/O

Note 13: Registers h'0c, h'0d, h'2e and h'09 bits 3 and 4 are read only (R/O).

LP3941A Serial Port Communication Address Code 7h'7E (Continued)

TABLE 1. LP3941 Control and Data Codes (Continued)

Note 14: Register h'0d stores the status of ON, RTC_ALARM, CHG_IN and HF_PWR inputs at the time of PMIC power on event. The bits indicate why the device turned on, and are static after the power on incident.

ON = 1 means the ON-input was logic high at the moment of power-up-sequence start.

RTC_ALARM = 1 indicates that RTC_ALARM-input was logic high when the power-up-sequence started.

CHG_IN = 1 indicates that external battery charger initiated the power-up-sequence. This also implies that the battery is connected (BSNS = 0V) and that battery voltage is over 3.0V, because otherwise the circuit will not power up.

HF_POWER = 1 indicates HF_PWR was logic high when the power-up-sequence started.

0 in any register bit position means that the corresponding signal did not initiate the power-up sequence.

Multiple bits can be '1' at the same time if they simultaneously initiated the power-up-sequence.

Note 15: Register h'2e shows the current status of comparator outputs, ADC block, ON-, RTC_ALARM and HF_PWR-inputs. Bit 3 of the register indicates if a valid external battery charger is connected to the LP3941 at the moment. Register h'2e is dynamic and shows the current status of these variables at all times.

COMP1/2 OUT = 1 means the corresponding comparator input is > threshold (see comparator specification).

ON, RTC_ALARM, HF_PWR = 1 indicates corresponding input pins are logic high.

CHARGER_PRESENT means CHG_IN pin has valid voltage for charging. (See charger specification.)

Note 16: For description on the operation of ADC Overflow and ADC Data Ready bits please see ADC specifications.

Regulator Output Voltage Programming

The following table summarizes the supported output voltages for LP3941A. Default voltages after start-up sequence have been highlighted in **bold**.

Data Code	V _{O1} (V)	V _{O2} (V)	V _{O3} (V)	V _{O4} (V)	V _{O5} (V)	V _{O6} (V)	V _{O7} (V)	V _{O8} (V)	V _{O9} (V)	V _{O10} (V)	V _{O11} (V)
4h'00	1.5	1.5	2.5	1.5	2.5	2.5	2.5	2.5	1.5	1.5	1.8
4h'01	1.6	1.6	2.6	1.6	2.6	2.6	2.6	2.6	1.6	1.6	1.9
4h'02	1.7	1.7	2.7	1.7	2.7	2.7	2.7	2.7	1.7	1.7	2.0
4h'03	1.8	1.8	2.8	1.8	2.8	2.8	2.8	2.8	1.8	1.8	2.1
4h'04	1.9	1.9	2.9	1.9	2.9	2.9	2.9	2.9	1.9	1.9	2.2
4h'05	2.0	2.0	3.0	2.0	3.0	3.0	3.0	3.0	2.0	2.0	2.3
4h'06	2.1	2.1	3.1	2.1	3.1	3.1	3.1	3.1	2.1	2.1	2.4
4h'07	2.2	2.2	3.2	2.2	3.2	3.2	3.2	3.2	2.2	2.2	2.5
4h'08	2.3	2.3		2.3					2.3	2.3	2.6
4h'09	2.4	2.4		2.4					2.4	2.4	2.7
4h'0a	2.5	2.5		2.5					2.5	2.5	2.8
4h'0b	2.6	2.6		2.6					2.6	2.6	2.9
4h'0c	2.7	2.7		2.7					2.7	2.7	3.0
4h'0d	2.8	2.8		2.8					2.8	2.8	3.1
4h'0e	2.9	2.9		2.9					2.9	2.9	3.2
4h'0f	3.0	3.0		3.0					3.0	3.0	3.3

Register Programming Examples

Example 1. Setting register h'00 value to 8h'ff' will enable LDOs 1–8.

Example 2. Setting register h'01 to 8h'8c' will set LDO9 output to 2.3V and LDO1 output to 2.7V. These voltages will appear at the LDO outputs if the corresponding LDOs have been enabled. Programming a voltage value to a LDO, which is off, will affect the LDO output voltage after the LDO is enabled. Enabling and programming the output voltage are separate operations.

Example 3. Setting register h'09 bit '0' to '1' will disable the main battery charger. Note that all register bits have to be programmed together. It is not possible to program individual bits alone. Writing into read only or unused bit positions does not affect those bits nor does it cause errors. Therefore to disable the main charger and to retain other bits in their default values one would write 8h'03'

ADC and Charger Programming

The following tables show how to select the main battery charger End-Of-Charge current limit, how to set the charger current limit and select a particular input for ADC measurement. Default values have been highlighted in **bold**.

EOC Current Selection Code		
SEL-1	SEL-0	I _{SET} (mA)
0	1	0.1C
1	0	0.15C
1	1	0.2C

A/D Input Selection Code		
MUX-1	MUX-0	Input
0	0	V _{BATT}
0	1	I _{CHG}
1	0	BATT-ID (20 µA Scale)

ADC and Charger Programming

(Continued)

A/D Input Selection Code		
MUX-1	MUX-0	Input
1	1	BATT-ID (200 μ A Scale)

Charger Current Selection Code	
Data Code	I _{SET} (mA)
4h'01	530
4h'02	574
4h'03	617
4h'04	660
4h'05	703
4h'06	746
4h'07	789
4h'08	832
4h'09	874

The following table is the conversion table for main battery charger current measurement using the on-chip ADC. Temperature dependency is due to the temperature coefficient of the aluminum sense resistor. The ADC itself is temperature compensated as is the charging current in the main battery charger.

A/D Converter's Charge Current Output Code ADC Control Register Code 2h'0X					
Device Temperature -40°C					
I _{CHARGE} (mA)	0	4.97	...	1262	1267
Output Code	h'00	h'01		h'fe	h'ff
Device Temperature $+25^{\circ}\text{C}$					
I _{CHARGE} (mA)	0	3.95	...	1003	1007
Output Code	h'00	h'01		h'fe	h'ff

ADC Block Functional Diagram

The ADC block provides four different functions on the LP3941A:

- Main battery voltage measurement
- Main battery charger charging current measurement
- Battery ID resistor resistance measurement with 200 μ A sense current
- Battery ID resistor resistance measurement with 20 μ A sense current

The following picture shows the implementation of these measurements with the ADC.

A/D Converter's Charge Current Output Code ADC Control Register Code 2h'0X					
Device Temperature $+85^{\circ}\text{C}$					
I _{CHARGE} (mA)	0	3.27	...	831	834
Output Code	h'00	h'01		h'fe	h'ff

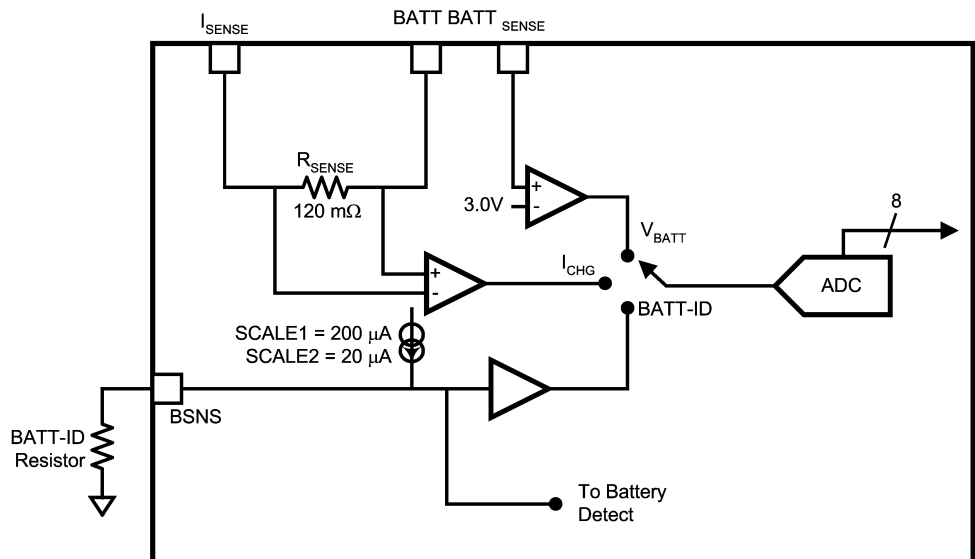
The next table shows the relationship between ADC output code and main battery voltage in ADC Battery Voltage Measurement Mode.

A/D Converter's Battery Voltage Output Code ADC Control Register Code 2h'0X					
Battery Voltage (V)	3.000	3.006	...	4.494	4.500
Output Code	h'00	h'01		h'fe	h'ff

The battery ID resistor value can be determined using the following table in the two ADC Battery ID Modes.

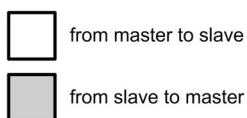
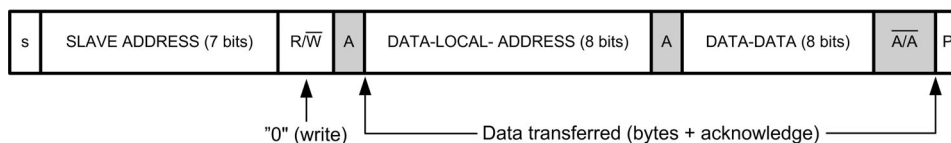
Battery ID Detection Code ADC Control Register Code 2h'0X		
ID Resistor (k Ω)	Scale 1 (200 μ A) Data Code Range	Scale 1 (20 μ A) Data Code Range
0.22	h'00–h'12	
0.75	h'13–h'32	
1.8	h'33–h'65	
3.3	h'66–h'a7	
5.1	h'a8–h'ff	
10		h'1e–h'31
15		h'32–h'49
22		h'4a–h'6d
33		h'6e–h'b0
55		h'b1–h'ff

ADC Block Functional Diagram (Continued)



20094518

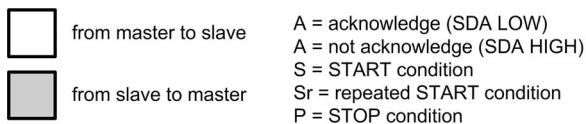
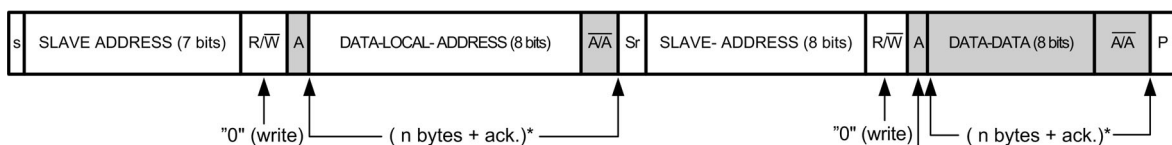
I²C Read and Write Sequences



A = acknowledge (SDA LOW)
A = not acknowledge (SDA HIGH)
S = START condition
P = STOP condition

20094528

Format to address LP3941A registers

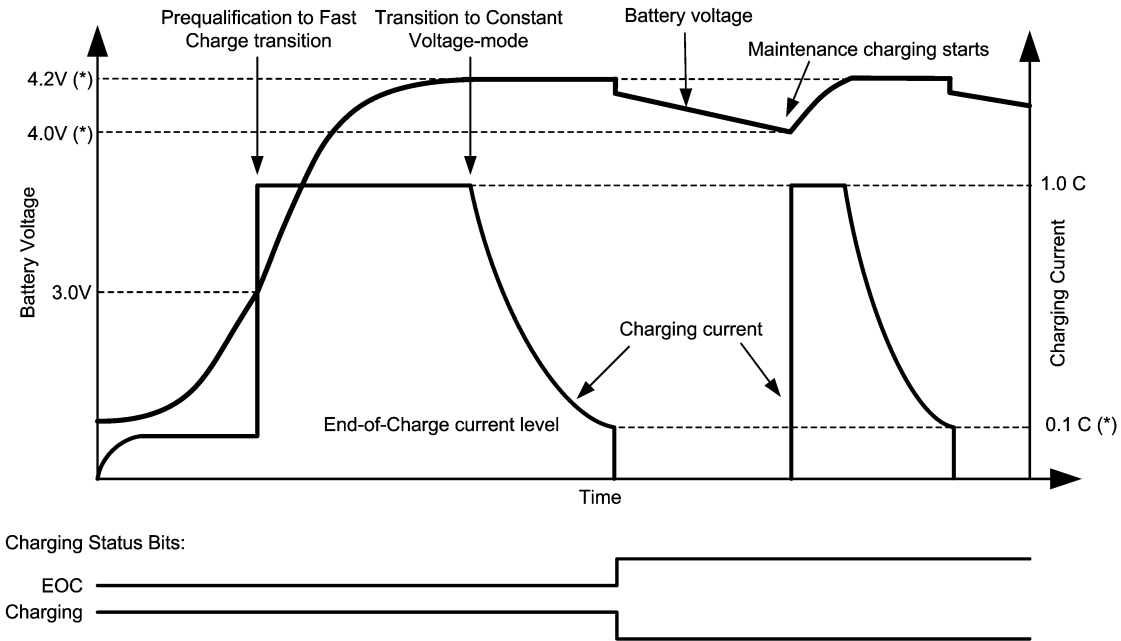


* transfer direction of the data and acknowledge bits depends on R/W bits

Combined read and write format.

20094519

Li-Ion Battery Charger Operation

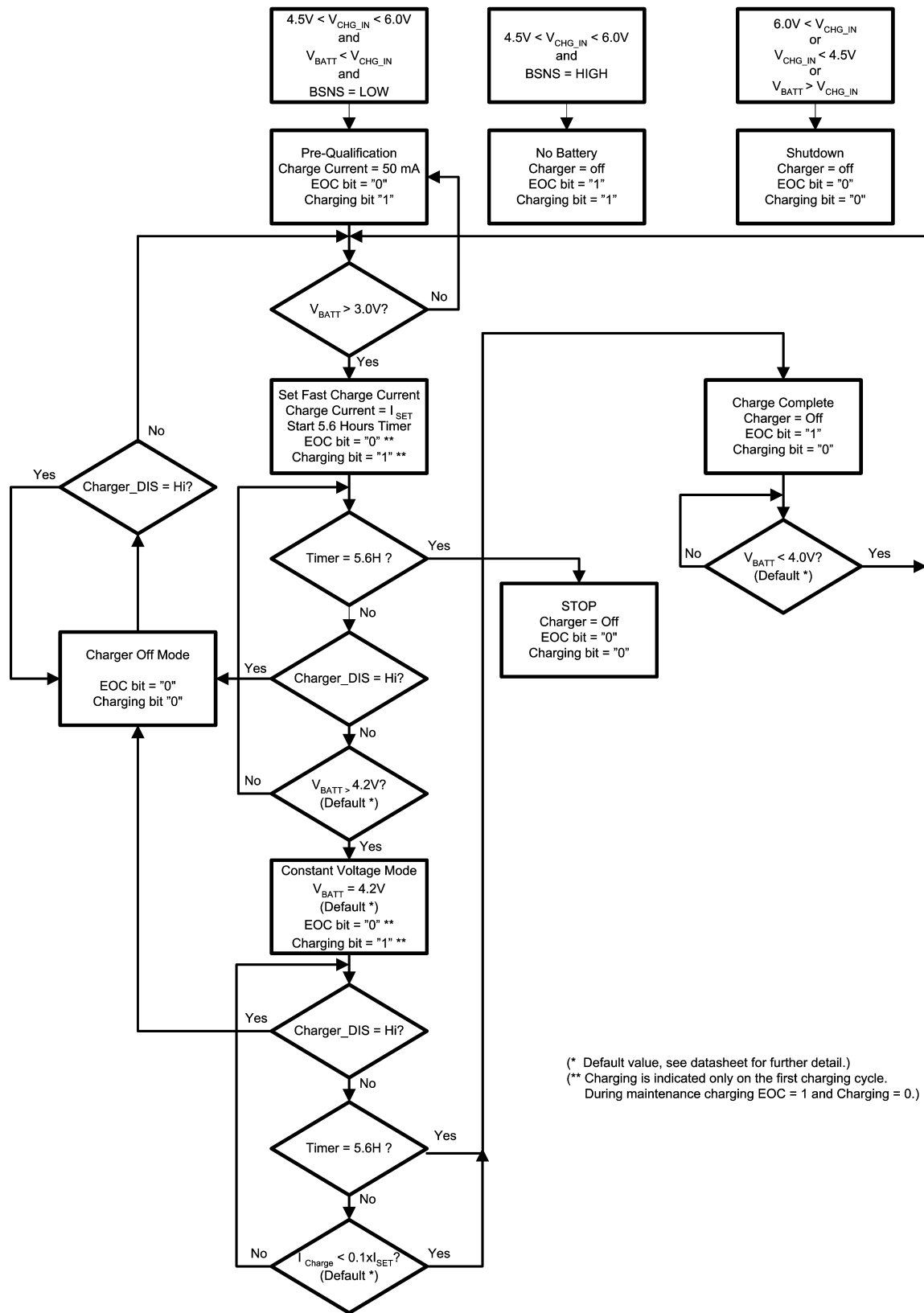


20094520

Charging Profile

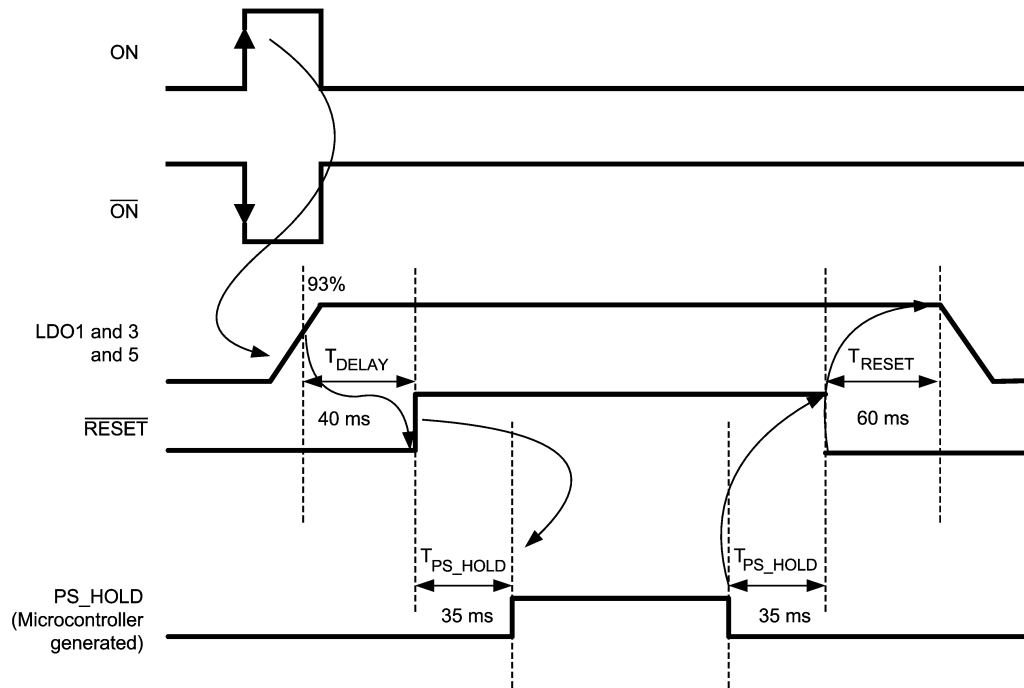
Note 17: (*) Battery charging termination voltage level, charging current and End-of-Charging current level are programmable. Battery charging termination voltage can be 4.1V or 4.2V (default). Maintenance charging start limit is 200 mV below the termination voltage level. End-of-Charging current level can be 20%, 15% or 10% (default) of maximum charging current. Picture shows typical situation with default programming. See LP3941A register map for programming details.

Li-Ion Battery Charger State Diagram



20094521

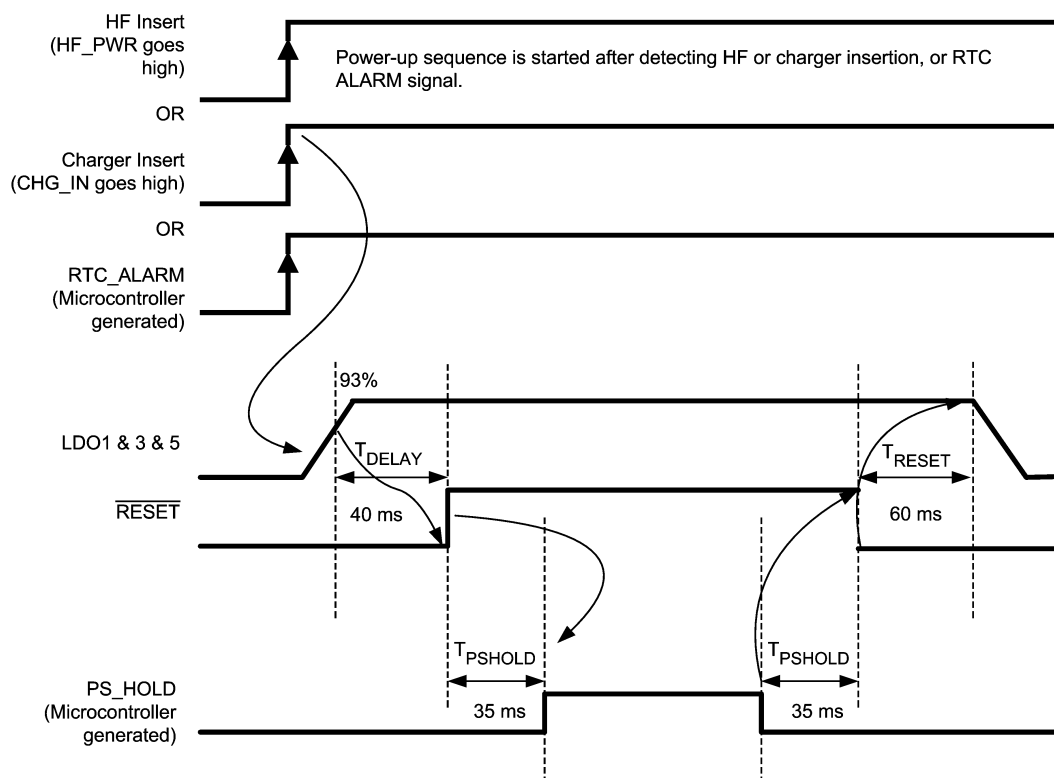
LP3941A Power-Up/Down Sequences



Power-up initiated by the ON-signal.

20094523

LP3941A Power-Up/Down Sequences (Continued)



20094522

Power-up initiated by hands free signal, RTC Alarm or charger insertion.

Note 18: If LDO1 does not reach 93% of nominal output level in 60 ms, LP3941A powers down.

Note 19: If PS_HOLD does not go high in 35 ms from RESET high, LP3941A powers down.

Note 20: If UVLO occurs before the rising edge of the PS_HOLD, LP3941A powers down.

Note 21: If LDO1 output drops below 85% of nominal output level, LP3941A waits for 90 ms for it to recover to 93% (with RESET = '0') before powering down. If LDO1 output reaches 93%, power-up sequence resumes with 40 ms RESET delay.

Note 22: LP3941A powers down after PS_HOLD has been low for >35 ms continuously. ON-signal, HF_PWR, CHG_IN or RTC ALARM have no control over shutdown operation, but it has to be initiated using PS_HOLD.

Power-Up/Down Reason and Status Register Operation

Register h'0d stores the reason (the activating signal) for powering up the PMU. The possible inputs that can activate the LP3941 are the ON, HF_PWR, RTC ALARM and CHG_IN signals. The signal that activated the LP3941A will have its corresponding bit set to '1'. If multiple signals activate the PMU simultaneously then they are all marked with '1' in register h'0d.

Register h'2e maintains the current status of ON, HF_PWR and RTC_ALARM signals and indicates the presence of an external charger connected to the PMU. This register shows the current status of the inputs whereas h'0d indicates the reason for power-up and remains thereafter static until another power-up sequence occurs.

Register h'2e also indicates the status of the two comparator outputs and the status of the ADC as well.

Note that the bit indicating the presence of an external charger voltage in register h'2e differs provides different information than that in register h'0d. Register h'0d CHG_IN-bit is '1' if CHG_IN-pin was logic high at start-up. Register h'2e Charger Present-bit indicates whether the CHG_IN pin

voltage is within acceptable limits ($4.5V \leq V_{CHG_IN} \leq 6.0V$) for charging. If the V_{CHG_IN} is valid for charging then this bit in register h'2e is set to '1'.

Flowchart Operation

The power-up/power-down state machine is reset when VBATT pin is less than 2.1V. The state machine is reset into the POWEROFF state. In this state the UVLO is enabled. All other functions except the RTC_LDO are off.

If an external charger or hands free power is connected, the state machine advances to the EXTERNAL STANDBY state and waits for the battery voltage to reach 3.0V. When the battery voltage reaches 3.0V the state machine advances to the TURNON LDOs state. In the EXTERNAL STANDBY state UVLO is enabled.

If the battery voltage reaches 3.0V before hands free power or a charger is connected the state machine advances to the STANDBY state. The back-up battery charger is enabled. If the ON-key is pressed, a charger is inserted, hands free power is connected or the RTC_ALARM goes high the state machine advances to the TURNON LDOs state.

Once in the TURNON LDOs state LDOs 1, 3 and 5 are enabled. The state machine remains in this state until LDO1 output reaches 93% of its nominal value or 60 ms have

Flowchart Operation (Continued)

passed. If LDO1 reaches 93%, the state machine advances to the RESET OFF DELAY state. If 60 ms have passed before the 93% level is achieved, the state machine returns to the STANDBY state and waits for another wakeup source.

The RESET OFF DELAY state counts off 40 ms. If the battery voltage drops below the UVLO threshold of 2.5V, the state machine goes to the ENABLE RESET state and power down sequence. If LDO1 output drops below 85% of the nominal voltage the state machine returns to the TURNON LDOs state in an attempt to restart the LDO. If neither of these conditions occurs the state machine advances to the PS_HOLD DETECT state.

In the PS_HOLD DETECT, $\overline{\text{RESET}}$ is deasserted and the state machine waits 35 ms for the PS_HOLD signal to go high. If PS_HOLD goes high within 35 ms of $\overline{\text{RESET}}$ going low the state machine advances to the IDLE state. If PS_HOLD is still low after 35 ms the state machine goes to ENABLE RESET state and the power down sequence. If battery voltage pins drops below the UVLO threshold, the

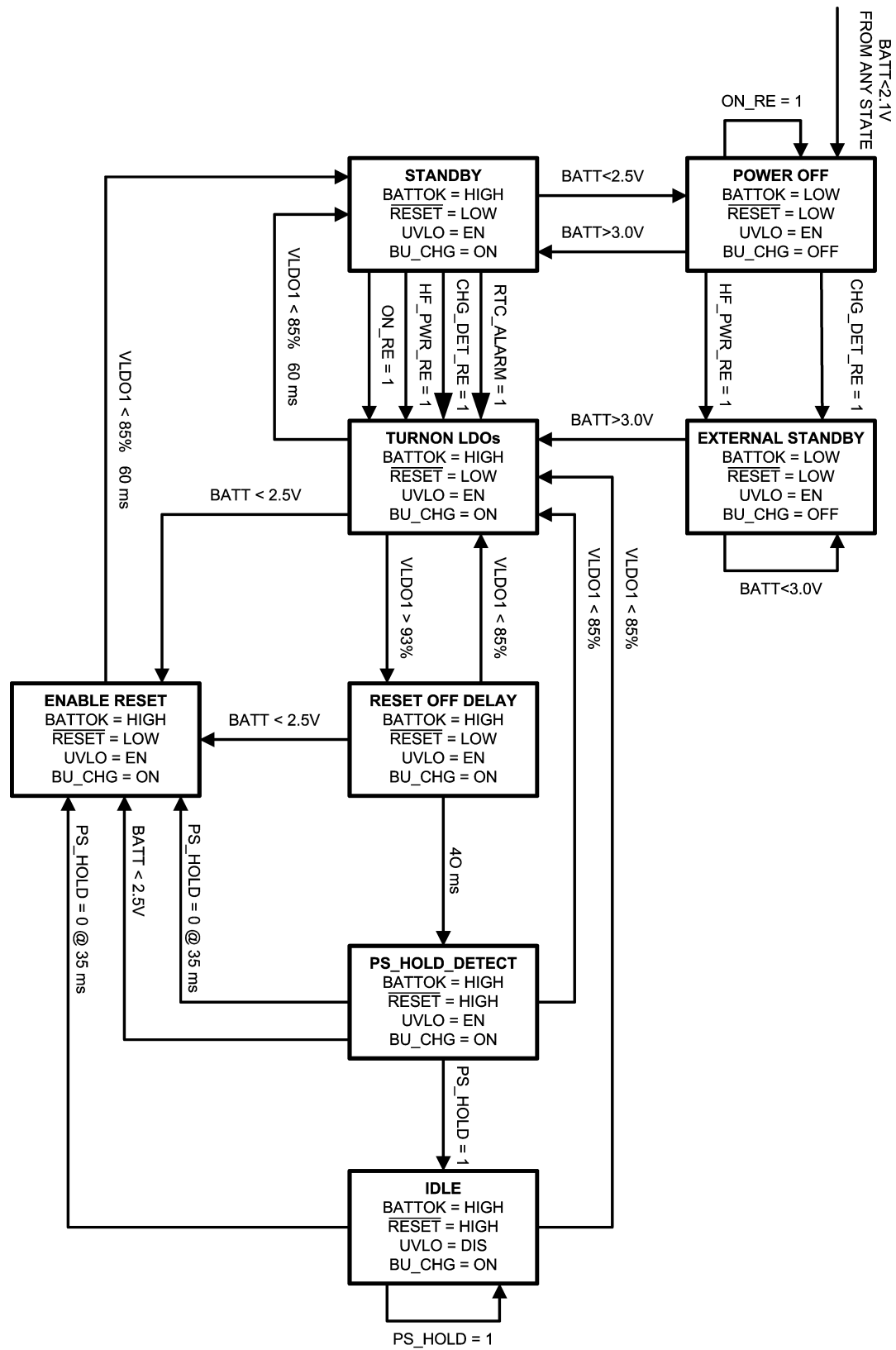
state machine advances to the ENABLE RESET state and the power down sequence. If LDO1 output drops below its 85% point the state machine returns to the TURNON LDOs state in an attempt to try restart the LDOs.

The state machine remains in the IDLE state until PS_HOLD goes low for 35 ms. If PS_HOLD is low for less than 35 ms the state machine remains in the IDLE state. If PS_HOLD stays low for more than 35 ms, the state machine advances to the ENABLE RESET state and the power down sequence. If LDO1 output falls below its 85% point the state machine returns to the TURNON LDOs state in an attempt to restart the LDOs. The UVLO is disabled in the IDLE state. The back-up battery charger is on.

In the ENABLE RESET state $\overline{\text{RESET}}$ is asserted. After 60 ms all LDOs are turned off. UVLO as well as the back-up battery charger are on. Once LDO1 falls to its 85% point the state machine returns to the STANDBY state.

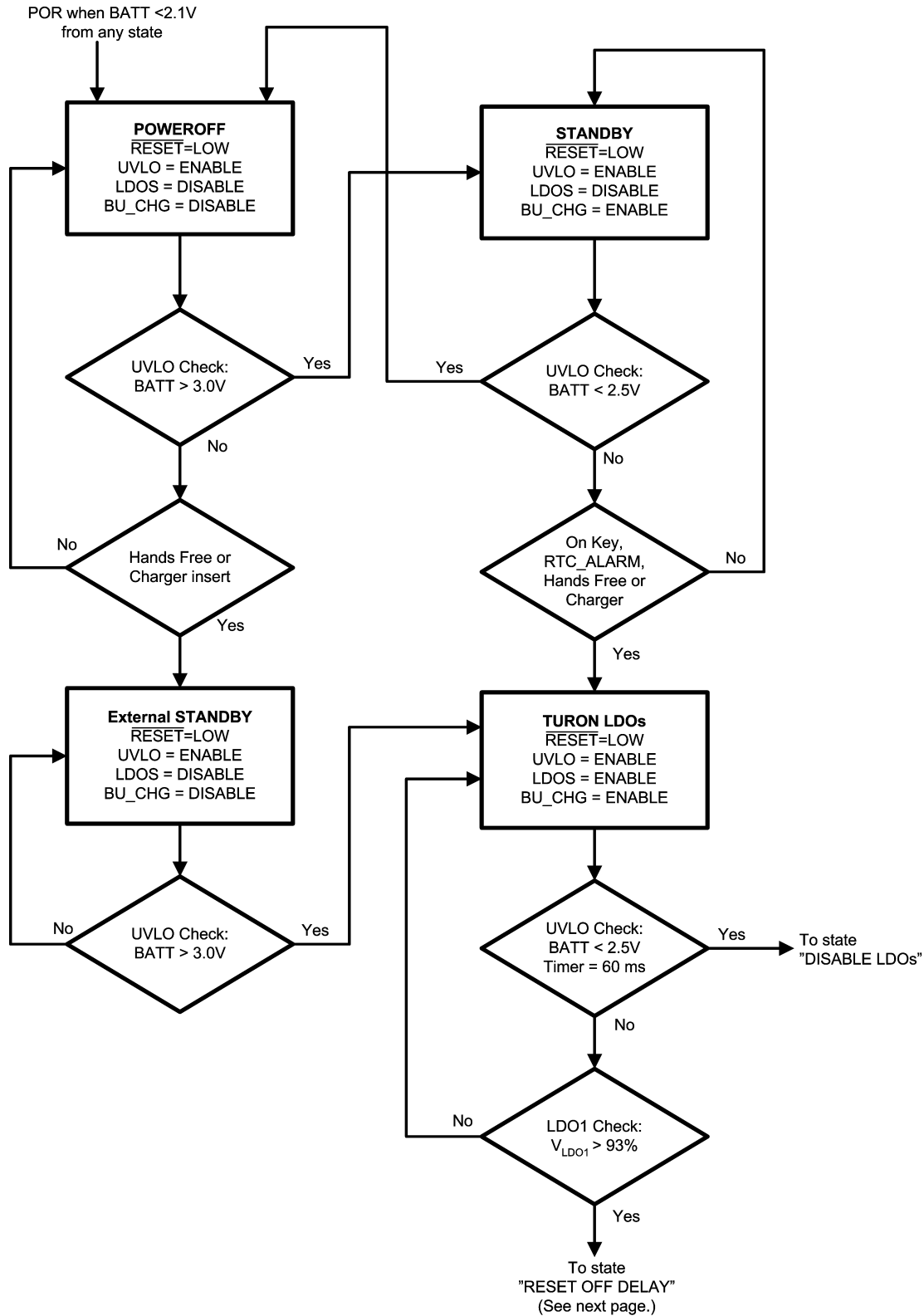
The RTC_LDO is powered by the back-up battery and is always on (unless specifically disabled via the I²C interface).

LP3941A Power-Up/Power-Down Flowchart



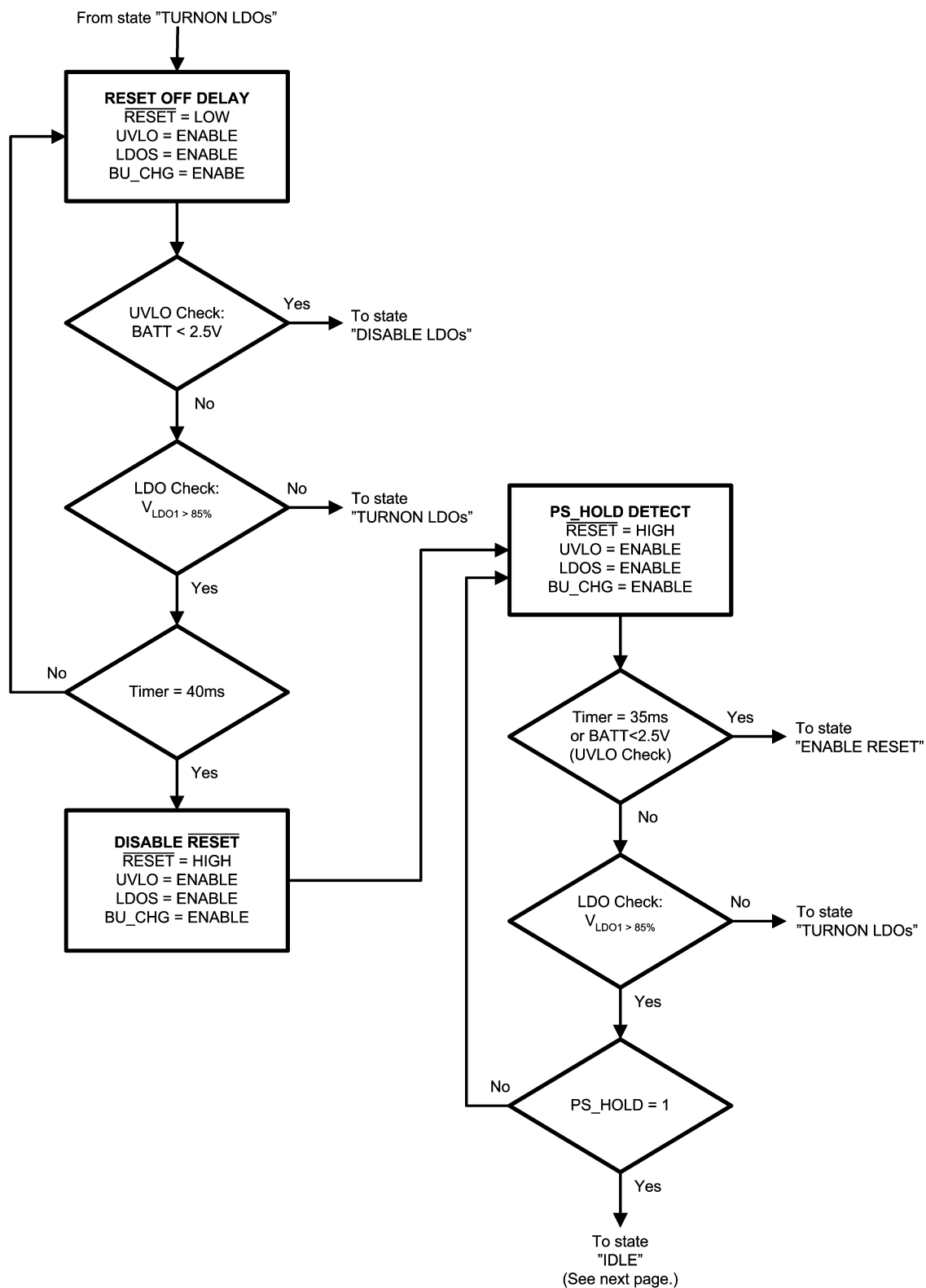
20094524

Detailed PU/PD Flowchart



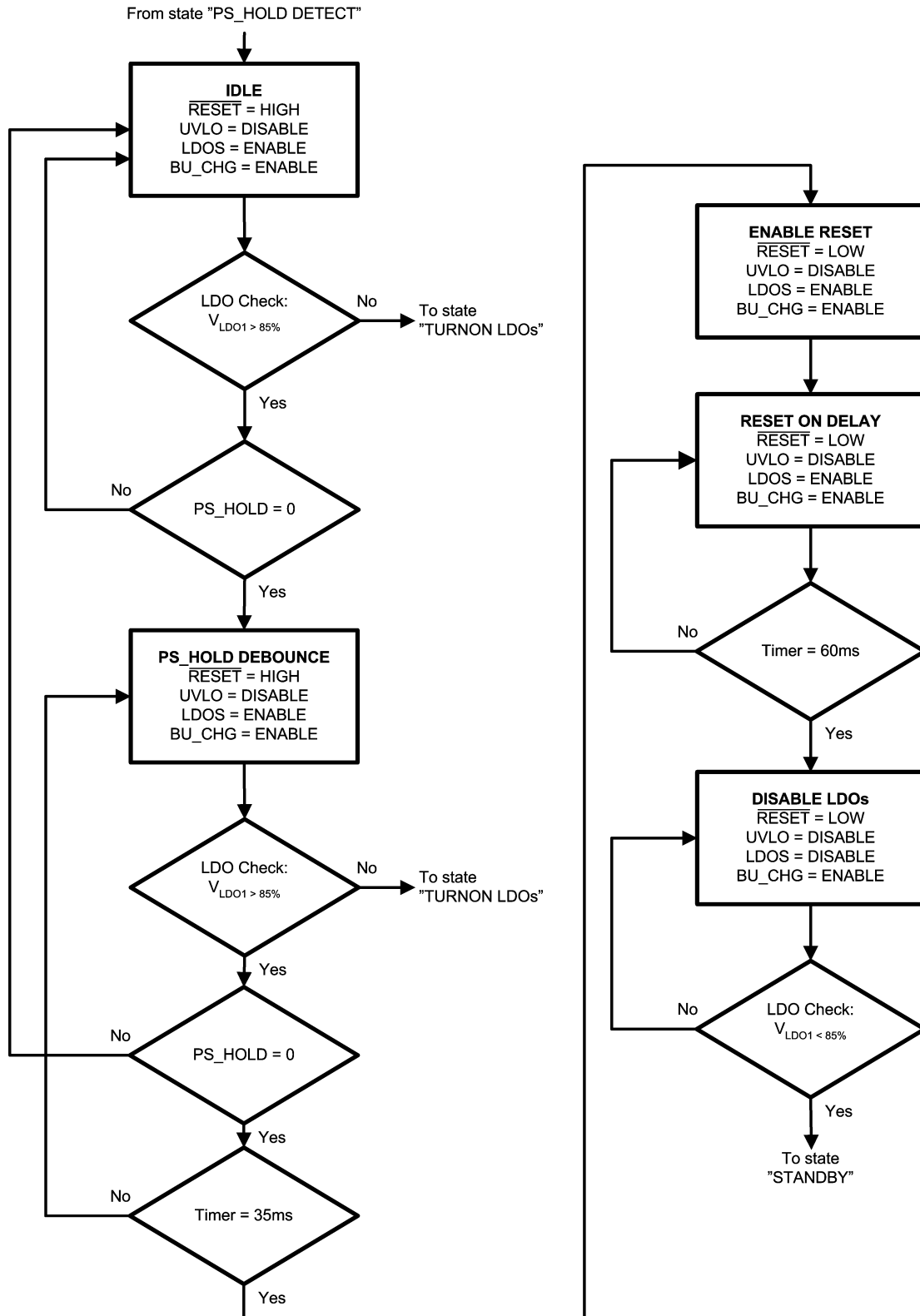
20094525

Detailed PU/PD Flowchart (Continued)

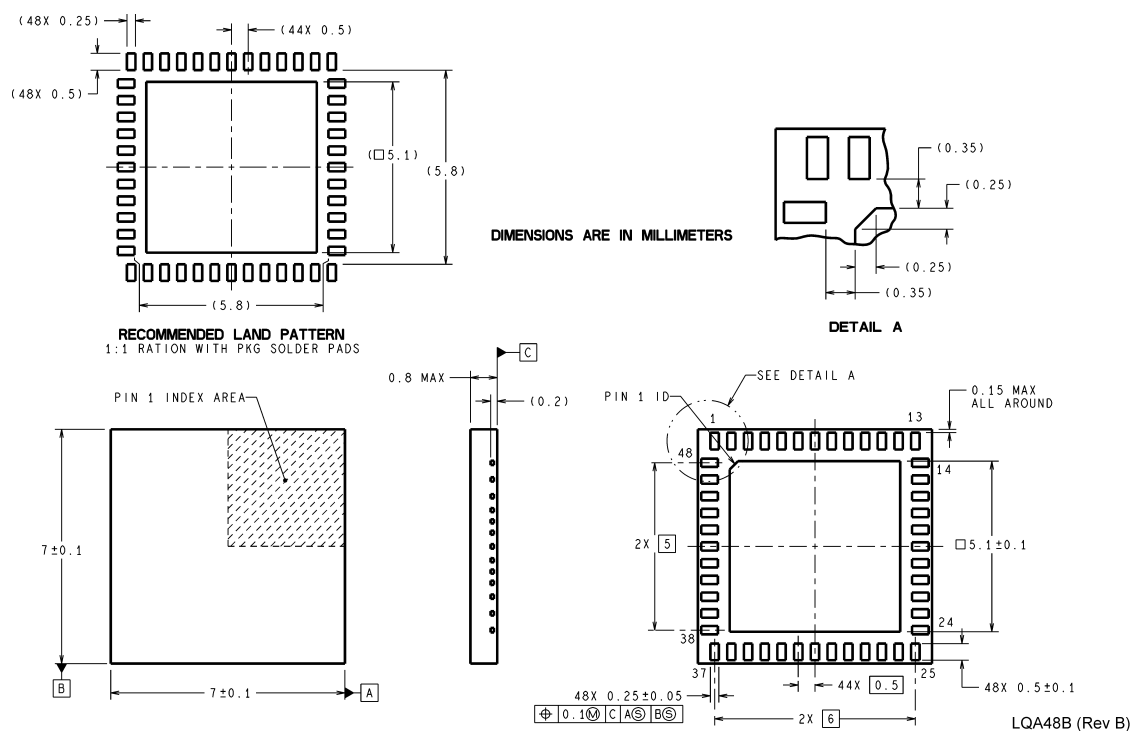


20094526

Detailed PU/PD Flowchart (Continued)



20094527

Physical Dimensions inches (millimeters) unless otherwise noted

48-Pin Leadless Leadframe Package
NS Package Number LQA48B

LIFE SUPPORT POLICY

NATIONAL'S PRODUCTS ARE NOT AUTHORIZED FOR USE AS CRITICAL COMPONENTS IN LIFE SUPPORT DEVICES OR SYSTEMS WITHOUT THE EXPRESS WRITTEN APPROVAL OF THE PRESIDENT AND GENERAL COUNSEL OF NATIONAL SEMICONDUCTOR CORPORATION. As used herein:

1. Life support devices or systems are devices or systems which, (a) are intended for surgical implant into the body, or (b) support or sustain life, and whose failure to perform when properly used in accordance with instructions for use provided in the labeling, can be reasonably expected to result in a significant injury to the user.
2. A critical component is any component of a life support device or system whose failure to perform can be reasonably expected to cause the failure of the life support device or system, or to affect its safety or effectiveness.

BANNED SUBSTANCE COMPLIANCE

National Semiconductor certifies that the products and packing materials meet the provisions of the Customer Products Stewardship Specification (CSP-9-111C2) and the Banned Substances and Materials of Interest Specification (CSP-9-111S2) and contain no "Banned Substances" as defined in CSP-9-111S2.



**National Semiconductor
Americas Customer
Support Center**
Email: new.feedback@nsc.com
Tel: 1-800-272-9959

www.national.com

National Semiconductor
Europe Customer Support Center
 Fax: +49 (0) 180-530 85 86
 Email: europe.support@nsc.com
 Deutsch Tel: +49 (0) 69 9508 6208
 English Tel: +44 (0) 870 24 0 2171
 Français Tel: +33 (0) 1 41 91 8790

National Semiconductor
Asia Pacific Customer
Support Center
Email: ap.support@nsc.com

National Semiconductor
Japan Customer Support Center
 Fax: 81-3-5639-7507
 Email: jpn.feedback@nsc.com
 Tel: 81-3-5639-7560