

## DS1628/DS3628 Octal TRI-STATE® MOS Drivers

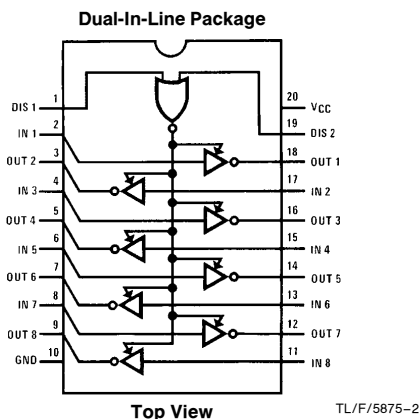
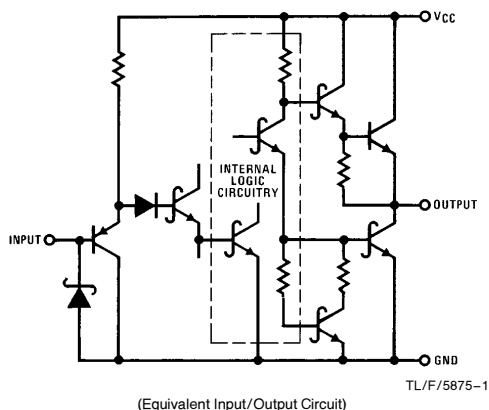
### General Description

The DS1628/DS3628 are octal Schottky memory drivers with TRI-STATE outputs designed to drive high capacitive loads associated with MOS memory systems. The drivers' output ( $V_{OH}$ ) is specified at 3.4V to provide additional noise immunity required by MOS inputs. A PNP input structure is employed to minimize input currents. The circuit employs Schottky-clamped transistors for high speed. A NOR gate of two inputs, DIS1 and DIS2, controls the TRI-STATE mode.

### Features

- High speed capabilities
  - Typical 5 ns driving 50 pF & 8 ns driving 500 pF
- TRI-STATE outputs
- High  $V_{OH}$  (3.4V min)
- High density
  - Eight drivers and two disable controls for TRI-STATE in a 20-pin package
- PNP inputs reduce DC loading on bus lines
- Glitch-free power up/down

### Schematic and Connection Diagrams



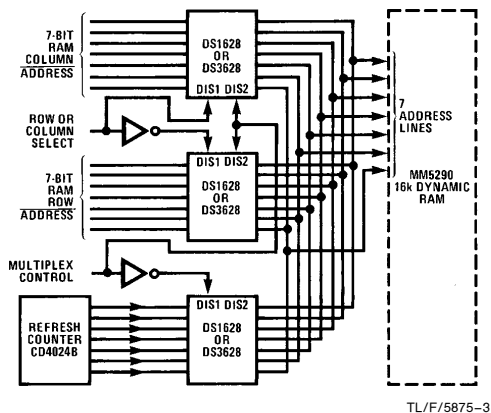
Order Number  
DS1628J, DS3628J, DS3628N  
See NS Package Number J20A or N20A

### Truth Table

Disable Input		Input	Output
DIS 1	DIS 2		
H	H	X	Z
H	X	X	Z
X	H	X	Z
L	L	H	L
L	L	L	H

H = high level  
L = low level  
X = don't care  
Z = high impedance (off)

### Typical Application



TRI-STATE® is a registered trademark of National Semiconductor Corp.

**Absolute Maximum Ratings** (Note 1)

If Military/Aerospace specified devices are required, please contact the National Semiconductor Sales Office/Distributors for availability and specifications.

Supply Voltage	7.0V
Logical "1" Input Voltage	7.0V
Logical "0" Input Voltage	−1.5V
Storage Temperature Range	−65°C to +150°C
Maximum Power Dissipation* at 25°C	
Cavity Package	1667 mW
Molded Package	1832 mW
Lead Temperature (Soldering, 10 seconds)	300°C

\*Derate cavity package 11.1 mW/°C above 25°C; derate molded package 14.7 mW/°C above 25°C.

**Operating Conditions**

	Min	Max	Units
Supply voltage ( $V_{CC}$ )	4.5	5.5	V
Temperature ( $T_A$ )			
DS1628	−55	+125	°C
DS3628	0	+70	°C

**Electrical Characteristics** (Notes 2, 3)

Symbol	Parameter	Conditions	Min	Typ	Max	Units
$V_{IN(1)}$	Logical "1" Input Voltage		2.0			V
$V_{IN(0)}$	Logical "0" Input Voltage				0.8	V
$I_{IN(1)}$	Logical "1" Input Current	$V_{CC} = 5.5V$ $V_{IN} = 5.5V$		0.1	40	$\mu A$
$I_{IN(0)}$	Logical "0" Input Current	$V_{CC} = 5.5V$ $V_{IN} = 5.5V$		−180	−400	$\mu A$
$V_{CLAMP}$	Input Clamp Voltage	$V_{CC} = 4.5V$ $I_{IN} = -18 mA$		−0.7	−1.2	V
$V_{OH}$	Logical "1" Output Voltage (No Load)	$V_{CC} = 4.5V$ , $I_{OH} = -10 \mu A$	DS1628	3.4	4.3	V
			DS3628	3.5	4.3	V
$V_{OL}$	Logical "0" Output Voltage (No Load)	$V_{CC} = 4.5V$ , $I_{OL} = 10 \mu A$	DS1628	0.25	0.4	V
			DS3628	0.25	0.35	V
$V_{OH}$	Logical "1" Output Voltage (With Load)	$V_{CC} = 4.5V$ , $I_{OH} = -1.0 mA$	DS1628	2.5	3.9	V
			DS3628	2.7	3.9	V
$V_{OL}$	Logical "0" Output Voltage (With Load)	$V_{CC} = 4.5V$ , $I_{OL} = 20 mA$	DS1628/DS3628	0.35	0.5	V
$I_{ID}$	Logical "1" Drive Current	$V_{CC} = 4.5V$ , $V_{OUT} = 0V$ , (Note 6)		−150		mA
$I_{OD}$	Logical "0" Drive Current	$V_{CC} = 4.5V$ , $V_{OUT} = 4.5V$ , (Note 6)		150		mA
Hi-Z	TRI-STATE Output Current	$V_{OUT} = 0.4V$ to 2.4V, DIS1 or DIS2 = 2.0V	−40	0.1	40	$\mu A$
$I_{CC}$	Power Supply Current	$V_{CC} = 5.5V$ One DIS Input = 3.0V All Other Inputs = X, Outputs at Hi-Z		90	120	mA
		DIS1, DIS2 = 0V, Others = 3V Outputs on		70	100	mA
		All Inputs = 0V, Outputs Off		25	50	mA

**Switching Characteristics** ( $V_{CC} = 5V$ ,  $T_A = 25^\circ C$ ) (Note 6)

Symbol	Parameter	Conditions	Min	Typ	Max	Units
$t_{S+}$	Storage Delay Negative Edge	(Figure 1) $C_L = 50 pF$		4.0	5.0	ns
		$C_L = 500 pF$		6.5	8.0	
$t_{S-}$	Storage Delay Positive Edge	(Figure 1) $C_L = 50 pF$		4.2	5.0	ns
		$C_L = 500 pF$		6.5	8.0	
$t_F$	Fall Time	(Figure 1) $C_L = 50 pF$		4.2	6.0	ns
		$C_L = 500 pF$		19	22	
$t_R$	Rise Time	(Figure 1) $C_L = 50 pF$		5.2	7.0	ns
		$C_L = 500 pF$		20	24	
$t_{ZL}$	Delay from Disable Input to Logical "0" Level (from High Impedance State)	$C_L = 50 pF$ to GND $R_L = 2 k\Omega$ to $V_{CC}$ (Figure 2)		19	25	ns
$t_{ZH}$	Delay from Disable Input to Logical "1" Level (from High Impedance State)	$C_L = 50 pF$ to GND $R_L = 2 k\Omega$ to GND (Figure 2)		13	20	ns

## Switching Characteristics (Continued) ( $V_{CC} = 5V$ , $T_A = 25^\circ C$ ) (Note 6)

Symbol	Parameter	Conditions	Min	Typ	Max	Units
$t_{LZ}$	Delay from Disable Input to High Impedance State (from Logical "0" Level)	$C_L = 50 \text{ pF}$ $R_L = 400\Omega$ to $V_{CC}$ to GND (Figure 3)		18	25	ns
$t_{HZ}$	Delay from Disable Input to High Impedance State (from Logical "1" Level)	$C_L = 50 \text{ pF}$ $R_L = 400\Omega$ to GND (Figure 3)		8.5	15	ns

## AC Test Circuits and Switching Time Waveforms

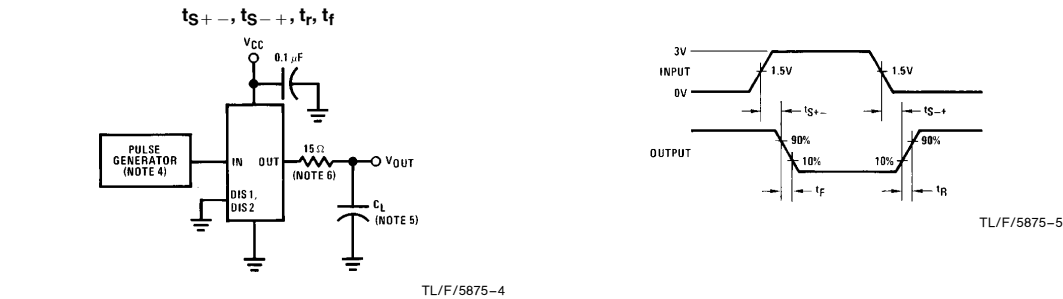


FIGURE 1

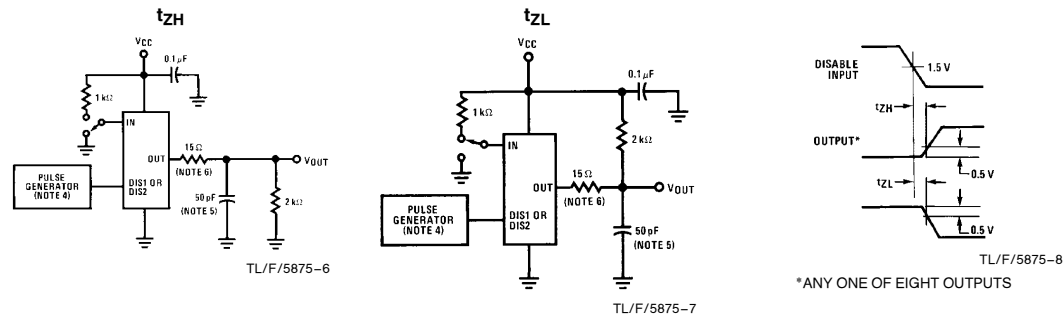


FIGURE 2

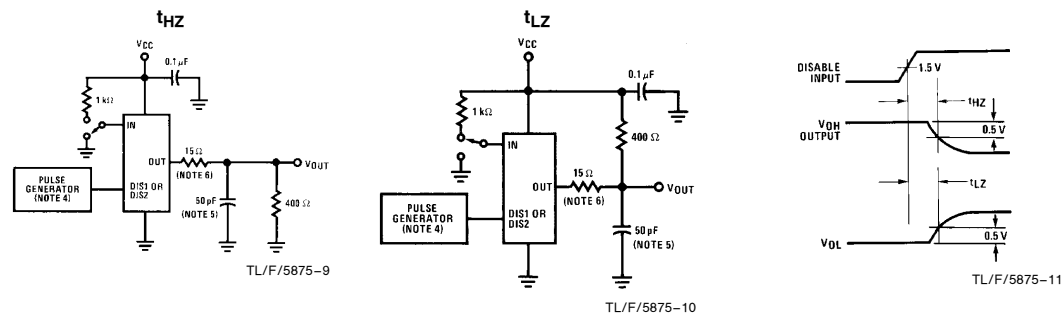


FIGURE 3

**Note 1:** "Absolute Maximum Ratings" are those values beyond which the safety of the device cannot be guaranteed. Except for "Operating Temperature Range" they are not meant to imply that the devices should be operated at these limits. The table of "Electrical Characteristics" provides conditions for actual device operation.

**Note 2:** Unless otherwise specified, min/max limits apply across the  $-55^\circ C$  to  $+125^\circ C$  temperature range for the DS1628 and across the  $0^\circ C$  to  $+70^\circ C$  range for the DS3628. All typical values are for  $T_A = 25^\circ C$  and  $V_{CC} = 5V$ .

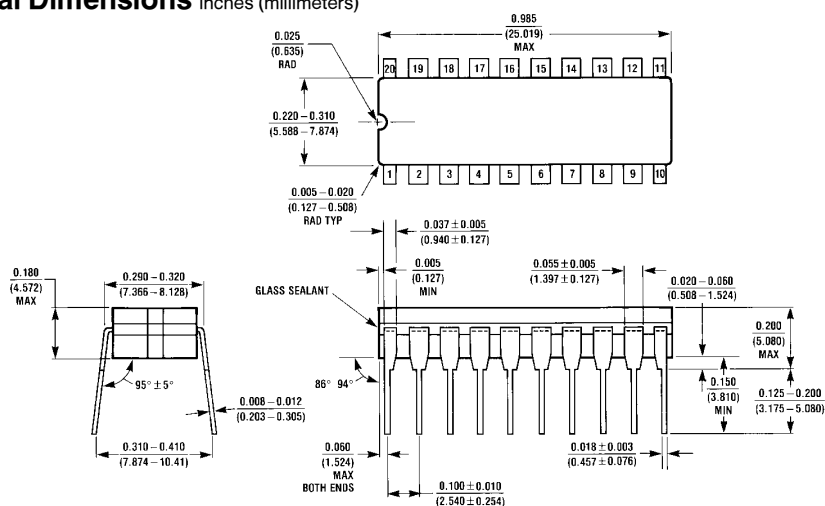
**Note 3:** All currents into device pins shown as positive; all currents out of device pins shown as negative; all voltages references to ground unless otherwise noted. All values shown as max or min on absolute value basis.

**Note 4:** The pulse generator has the following characteristics:  $Z_{OUT} = 50\Omega$  and  $PRR \leq 1 \text{ MHz}$ . Rise and fall times between 10% and 90% points  $\leq 5 \text{ ns}$ .

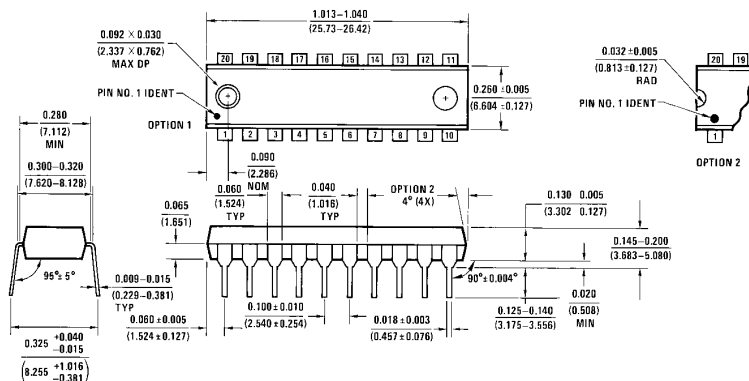
**Note 5:**  $C_L$  includes probe and jig capacitance.

**Note 6:** When measuring output drive current and switching response for the DS1628 and DS3628 a  $15\Omega$  resistor should be placed in series with each output.

### Physical Dimensions inches (millimeters)



**Ceramic Dual-In-Line Package (J)**  
**Order Number DS1628J or DS3628J**  
**NS Package Number J20A**



**Molded Dual-In-Line Package (N)**  
**Order Number DS3628N**  
**NS Package Number N20A**

## LIFE SUPPORT POLICY

NATIONAL'S PRODUCTS ARE NOT AUTHORIZED FOR USE AS CRITICAL COMPONENTS IN LIFE SUPPORT DEVICES OR SYSTEMS WITHOUT THE EXPRESS WRITTEN APPROVAL OF THE PRESIDENT OF NATIONAL SEMICONDUCTOR CORPORATION. As used herein:

1. Life support devices or systems are devices or systems which, (a) are intended for surgical implant into the body, or (b) support or sustain life, and whose failure to perform, when properly used in accordance with instructions for use provided in the labeling, can be reasonably expected to result in a significant injury to the user.
2. A critical component is any component of a life support device or system whose failure to perform can be reasonably expected to cause the failure of the life support device or system, or to affect its safety or effectiveness.



**National Semiconductor Corporation**  
1111 West Bardin Road  
Arlington, TX 76017  
Tel: 1(800) 272-9959  
Fax: 1(800) 737-7018

**National Semiconductor  
Europe**

Europe Fax: (+49) 0-180-530 85 86  
Email: cnjwge@tevm2.nsc.com  
Deutsch Tel: (+49) 0-180-530 85 85  
English Tel: (+49) 0-180-532 78 32  
Français Tel: (+49) 0-180-532 93 58  
Italiano Tel: (+49) 0-180-534 16 80

**National Semiconductor  
Hong Kong Ltd.**

13th Floor, Straight Block,  
Ocean Centre, 5 Canton Rd.  
Tsimshatsui, Kowloon  
Hong Kong  
Tel: (852) 2737-1600  
Fax: (852) 2736-9960

**National Semiconductor  
Japan Ltd.**

Tel: 81-043-299-2309  
Fax: 81-043-299-2408