

ST7MDT1-EMU2B

HDS2 Series Emulator

USER MANUAL

Release 2.1

June 2000



Ref: DOC-ST7MDT1-EMU2B

USE IN LIFE SUPPORT DEVICES OR SYSTEMS MUST BE EXPRESSLY AUTHORIZED.

STMicroelectronics PRODUCTS ARE NOT AUTHORIZED FOR USE AS CRITICAL COMPONENTS IN LIFE SUPPORT DEVICES OR SYSTEMS WITHOUT THE EXPRESS WRITTEN APPROVAL OF STMicroelectronics. As used herein:

1. Life support devices or systems are those which (a) are intended for surgical implant into the body, or (b) support or sustain life, and whose failure to perform, when properly used in accordance with instructions for use provided with the product, can be reasonably expected to result in significant injury to the user.
2. A critical component is any component of a life support device or system whose failure to perform can reasonably be expected to cause the failure of the life support device or system, or to affect its safety or effectiveness.

Table of Contents

Chapter 1:	Introduction	5
1.1	Emulator Configuration	6
1.2	Emulator Operation	7
1.3	Software and Documentation for the Emulator Kit	8
1.4	About this manual....	8
1.5	Related Documentation	8
1.6	Getting Assistance	9
Chapter 2:	Getting Started	11
2.1	Your System Requirements	11
2.2	Delivery Checklist	11
2.3	Installing the Hardware	12
2.4	Debuggers supporting the ST7HDS2 emulator	18
Chapter 3:	STVD7	21
3.1	Installing STVD7	21
3.2	Launching STVD7	22
3.3	About STVD7 debugging features	23
3.4	Workspaces	24
3.5	Toolchains and application files	25
3.6	Creating a workspace	28
3.7	Opening an existing workspace	30
3.8	Opening binary files	32
3.9	Changing your project settings	33
3.10	Saving workspaces	35
3.11	Debug context and Build context	37
3.12	Configuring the MCU	38
3.13	Start debugging!	43
Chapter 4:	Emulator Features	45
4.1	Main Features of the ST7 HDS2 Emulator series	45
4.2	Specific Features	45
4.3	Emulator Architecture	45
4.4	Output Triggers	49
4.5	Analyser Probe Input Signals	51
4.6	Front Panel LEDs	52
4.7	On-Chip Peripherals	52

Table of Contents

4.8	Emulation Functional Limitations and Discrepancies	53
Appendix A: Troubleshooting		55
A.1	Identifying the Problem	55
A.2	Changing the Parallel Port Setup on Your PC	55
A.3	Running the Hardware Test	56
Appendix B: Glossary		59
Product Support		61
	Getting prepared before you call.....	61
	Contact List	61
	Software updates	62
	Hardware spare parts	62
Index		65

1 INTRODUCTION

Thanks for choosing ST7! This manual will help you get started with the ST7MDT1-EMU2B emulator kit.

The ST7MDT1-EMU2B package is a development tool designed for emulation of the following microcontrollers of the MDT1 family:

Supported Devices
ST 72254 G1 ST 72254 G2
ST 72216 G1
ST 72215 G2
ST 72104 G1 ST 72104 G2

The ST7MDT1-EMU2B package will assist you in debugging your application hardware as well as your software. The ST7MDT1-EMU2B kit comes with a new debugger software package—ST7 Visual Debug—which contains all of the necessary resources to help you design, develop and debug ST7 application software running in a real environment.

**Tip:**

If you come across any terms or abbreviations you do not understand, you can check their meaning in the Glossary on page 59.

First off, check that the ST7 MCU that you have picked for your application is in the list of devices (see table above) supported by this version of the ST7MDT1-EMU2B emulator

The Emulator Package is made up of two main parts:

- The Hardware Development System (**ST7-HDS2**), which is the common mainframe to all ST7 emulators.
- The **ST7MDT1-Active Probe**, dedicated to the family, which constitutes the physical link between the emulator and your application.

Note: *When receiving the ST7MDT1-EMU2B development tool, please refer to the Delivery Checklist on page 11 to confirm that all of the contents of the package are present.*

The emulator performs two main functions:

- It replaces the microcontroller in the application, by means of an emulation probe that is plugged into the application in place of the emulated MCU.
- It controls the internal data bus of the emulated microcontroller, providing arbitration and tracing capabilities on all accesses to either of the following resources:
 - ST7-HDS2 resource,
 - ST7MDT1-Active Probe resources,
 - Application resources.

Therefore, you can have the emulator running your software in the application as the emulated microcontroller unit (MCU) would do, associated with extensive tracing capabilities (keeping a trace of what the MCU did) and control capabilities (ability to react specifically upon defined conditions).

In this way, it is possible to obtain a full emulation of the microcontroller resources.

1.1 Emulator Configuration

Figure 1 shows a general configuration for the ST7MDT1-EMU2B emulator kit. The main ST7-HDS2 box is connected to your PC via the parallel port. Two flat cables connect the ST7-HDS2 box to the ST7MDT1-Active Probe, to which a device adapter can be fixed so that you can connect the emulator to your application board.

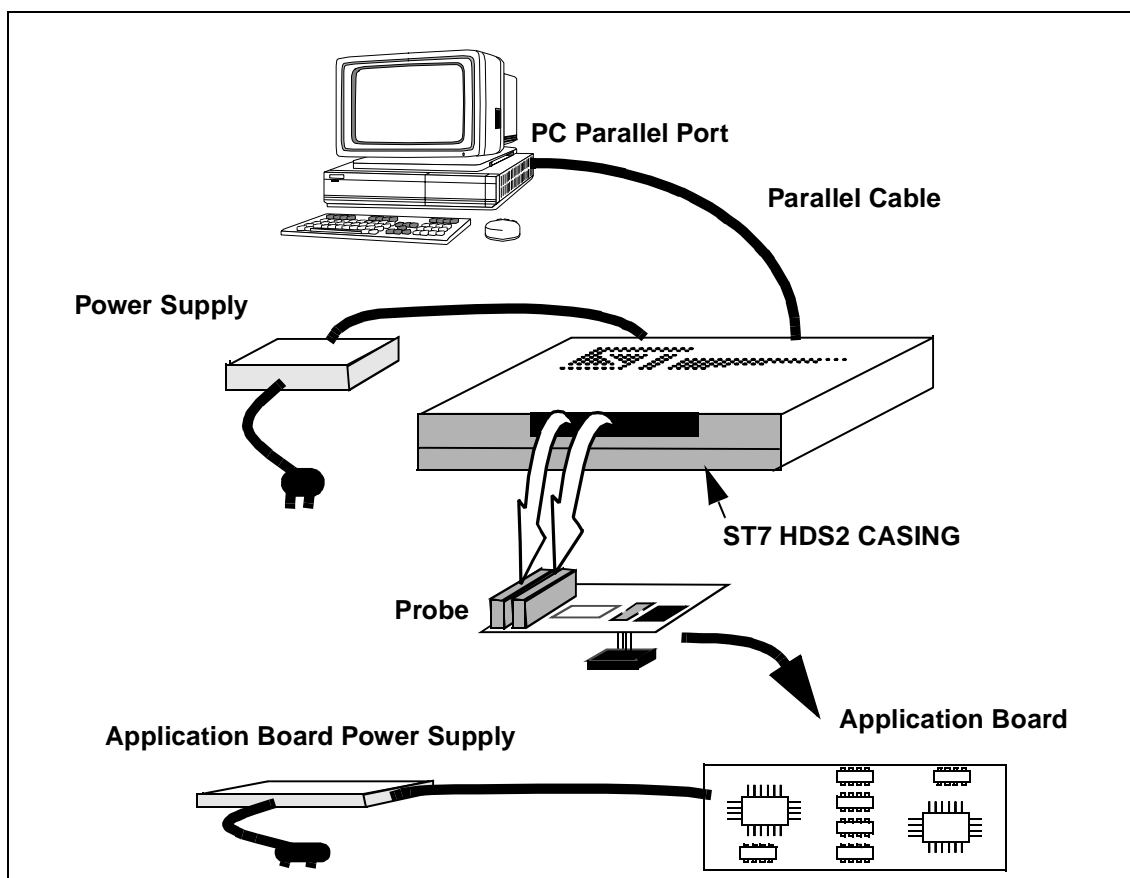


Figure 1: ST7MDT1-EMU2B General Configuration

1.2 Emulator Operation

A symbolic debugger, **ST7 Visual Debug**, (also referred to as **STVD7**), is provided to control the emulator.

ST7 Visual Debug can be run on a PC under the Windows environment, and is common to all ST7 devices. ST7 Visual Debug uses a window menu-driven interface, and enables you to configure the emulator.

Chapter 3: STVD7 on page 21 explains how to install ST7 Visual Debug on your PC, and set up the emulator configuration so that you can begin your debugging session.

Once assembled and linked, the application software is ready to be downloaded into the ST7 emulator. The development station performs a real-time emulation of the target device, thus allowing high performance testing and debugging of both application hardware and software.

When the program is fully debugged, the ST7 EPROM programming board (ref.: ST7MDT1-EPB2—not provided with this emulator kit) can be used to

program the emulation device with the Motorola S Record format file produced by the OBSEND formatter.

1.3 Software and Documentation for the Emulator Kit

The "MCU on CD" CD-ROM contains:

- ST7 Tools, comprising the following software:
 - The source-level graphic debugger, ST7 Visual Debug, that operates with ST7-HDS2 Emulators and ST7 Development Kits or as a standalone ST7 simulator.
 - The ST7 Assembly chain, composed of an assembler, linker, librarian and formatter.
 - The ST7 Windows Epromer to program your MCU target devices.
- Third-party C compiler and toolchain demos (Hiware and Cosmic).
- ST7 application notes (with sources), training slides and exercises, this manual (in PDF version), and other useful reference materials.
- Datasheets for the ST7 MCU family.

1.4 About this manual....

Detailed instructions on how to install your emulator configuration is described in *Chapter 2: Getting Started* on page 11.

How to start debugging your application using your emulator and ST7 Visual Debug is described in *Chapter 3: STVD7* on page 21.

The emulator kit's hardware features are described in *Chapter 4: Emulator Features* on page 45.

1.5 Related Documentation

To get all the essential information about your ST7 MCU and the software that comes on the CD-ROM with the emulator kit, you will need to refer to these documents (also contained on the CD-ROM):

- ST7-Family Data Sheets
- **ST7-Family 8-bit MCUs Product Overview** (Ref. BKST7/2)
- **Software Tools for the ST7 Family** (Ref. Doc-ST7ASMLK-SW)
- ST7-Family Programming Manual

1.6 Getting Assistance

For more information, application notes, FAQs and software updates on all the ST microcontroller families, check out the CD-ROM or our website:

<http://mcu.st.com>

For assistance on all ST microcontroller subjects, or if you need help with using your emulator, use the contact list provided in *Contact List* on page 61. We'll be glad to help you!

2 GETTING STARTED

2.1 Your System Requirements

The ST7MDT1-EMU2B HDS2 Emulator (both hardware and software components) has been designed to work with PCs meeting the following requirements:

- One of the following operating systems: Microsoft® Windows® 95, 98 or NT®.
- Intel® Pentium (or compatible) processor with minimum speed of 100 MHz.
- Minimum RAM of 32 MB.
- 21 MB of free hard disk space to install all of the ST7 tools.

2.2 Delivery Checklist

The emulator unit (ref.: ST7MDT1-EMU2B) is delivered with the following (refer to *Figure 2*):

- 1 One emulator box containing the ST7-HDS2 main board (ref.: MB176).
- 2 One parallel cable.
- 3 Two 50-wire flat cables to connect the ST7-HDS2 main board to the emulation probe.
- 4 One emulation probe—the ST7MDT1-Active Probe (ref.: DB374) with an SDIP32 pin socket for the SDIP32 microcontroller package.
- 5 An SO28 device adapter (ref.: DB359).
- 6 One User Manual for the ST7 Family Software Development Tools (assembler, linker, and formatter). (Not shown.)
- 7 This manual. (Not shown.)

- 8 A CD-ROM which contains ST7 information and software, including ST7 Visual Debug and a Windows® Epromer. (Not shown.)

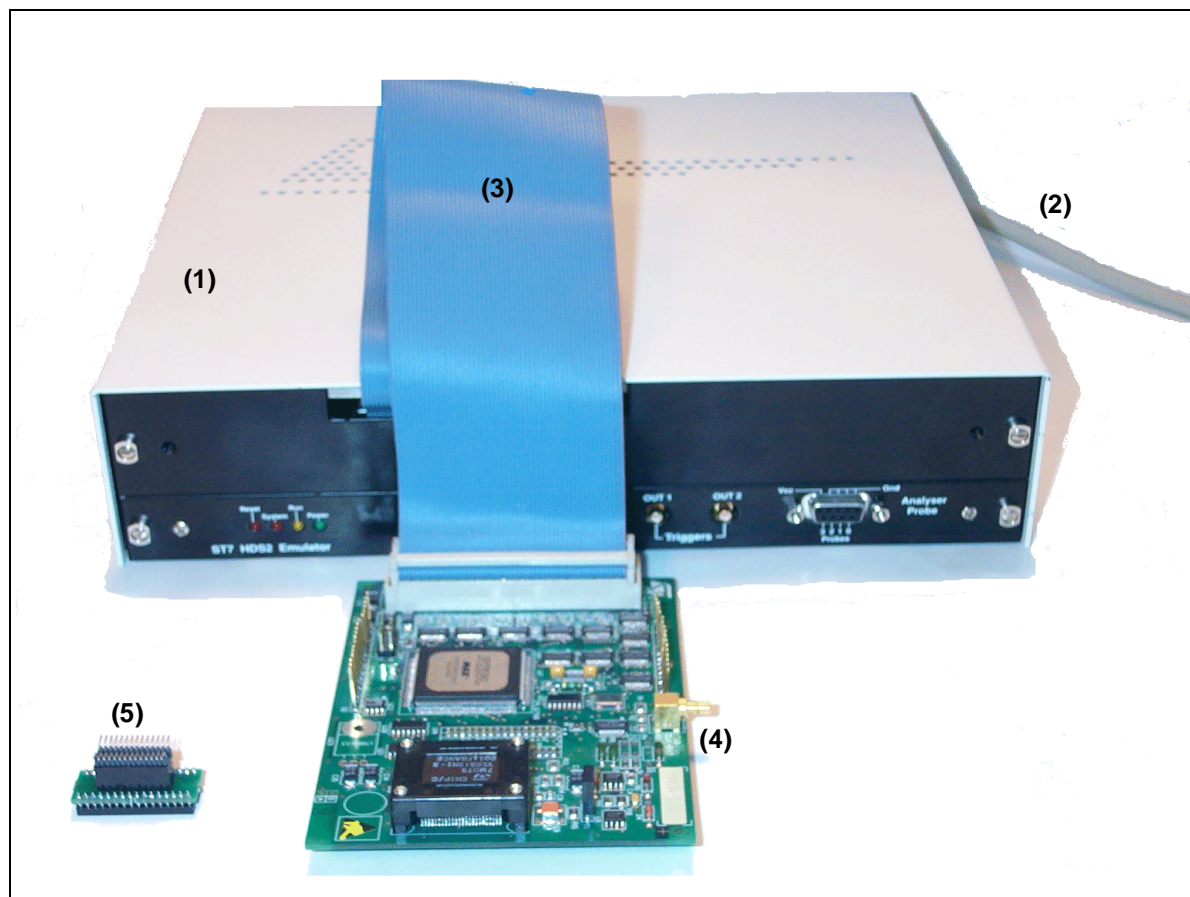


Figure 2: Main Components of ST7MDT1-EMU2B Emulator Kit

2.3 Installing the Hardware

The ST7-HDS2 emulator is connected through the parallel port to a PC computer which runs the control software (ST7 Visual Debug) as explained later. To connect your ST7 HDS2 emulator, you will have to follow these general steps:

- 1 Connect the ST7-HDS2 to your PC using the parallel cable provided.
- 2 Connect the two flat cables of your ST7-HDS2 emulator to the emulation probe connectors.
- 3 Connect the emulation probe to your application using the appropriate device adapters.
- 4 Connect the power supply cable between the power supply block and the power connector located on the rear panel of your ST7-HDS2 emulator.

5 Power up the emulator and then connect your application power supply.

A connection flow diagram is shown hereafter. Each installation step is described in detail in the following sections.

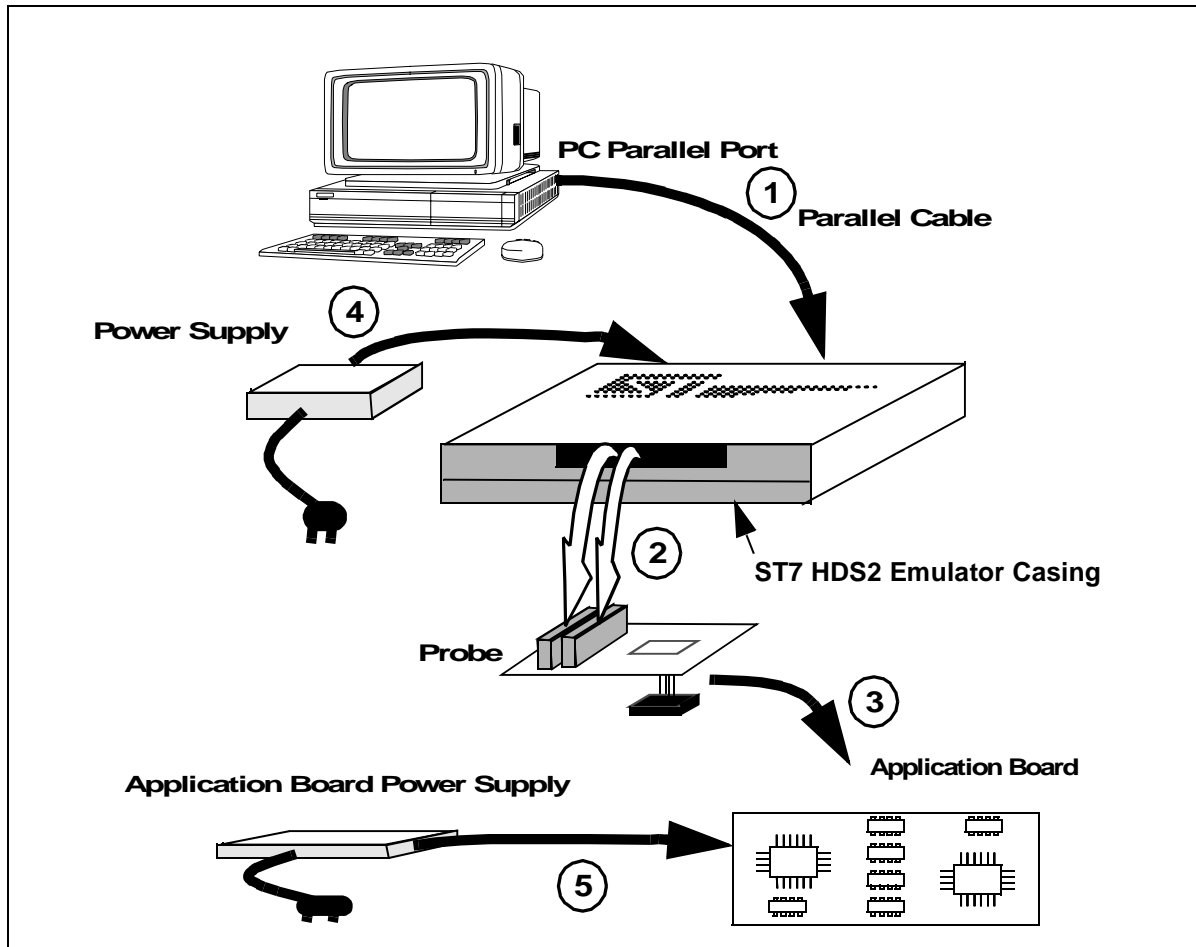


Figure 3: STMDT1-EMU2B Connection Flow

Step 1: Connecting the Emulator to your PC

- 1 Shutdown and power-off the PC that is to be connected to the emulator.
- 2 Connect one end of the parallel cable to the emulator's rear panel 25-pin SUB-D connector and the other end to one of the PC's parallel ports (LPT1 to LPT2)—refer to Figure 4.

Note: Centronics (or PC-AT or SPP), ECP and EPP parallel port configurations are supported by the emulator.

Be sure to use the parallel cable provided with the emulator—using a longer parallel cables may cause emulator malfunctions.

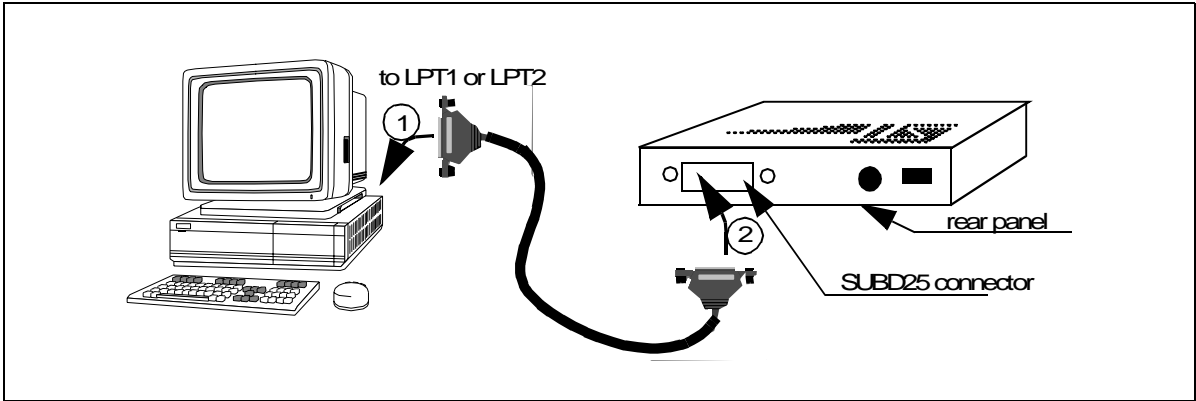


Figure 4: Connecting the Emulator to the PC

Step 2: Connecting the HDS2 and the Probe

- 1 Ensure that the application and the emulator are **powered-off**.
- 2 Plug the two 50-wire flat cables into J1 and J2 as described below:

ST7-HDS2 main board (MB176)	ST7MDT1 Active Probe (DB374)
Upper cable	J2
Lower cable	J1

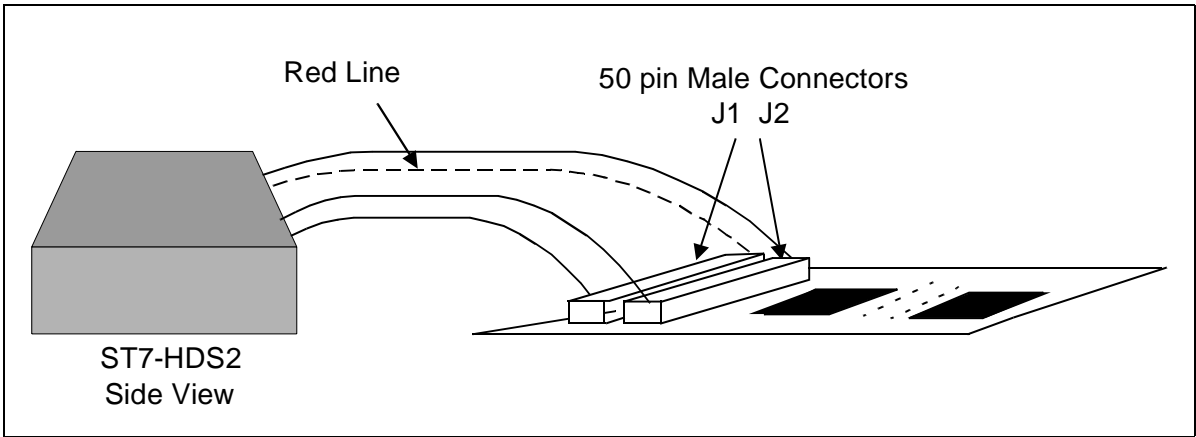


Figure 5: Connecting the Emulator to the Probe

EMC-Compliant Probes: In order to work under an EMC-compliant environment, you will have to clip one or two EMC-ferrite on each 50-wire flat cable linking the

probe to the emulator box. Place these ferrites as close to the emulator window as possible. Three ferrites are provided in the package. See *Figure 6* for an illustration of where to attach the ferrites.

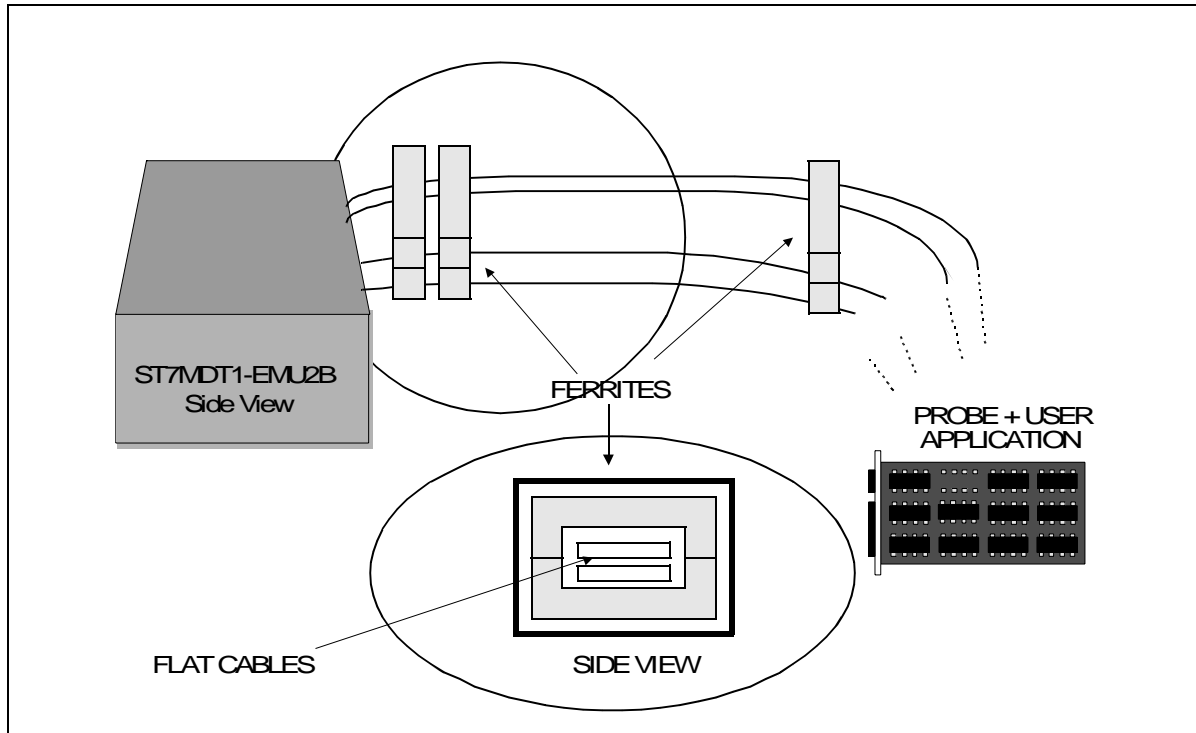


Figure 6: Making your Probes EMC-Compliant

Step 3A: Connecting the SO28 Probes to Your Application

To connect the ST7MDT1-Active Probe to its SO28 device adapter (ref.: DB359) and then to your application board, follow these steps (see *Figure 7*):

- 1 Solder the SO28 device adapter on your application board.
- 2 Now connect the ST7MDT1-PROBE onto the SO28 device adapter by inserting the probe's female connector into the male pins on the SO28 device adapter. The number 1 pins of these two boards must also correspond.

Note: Having done this, you are ready start using your STVD7 debugger with your emulator without the application board.

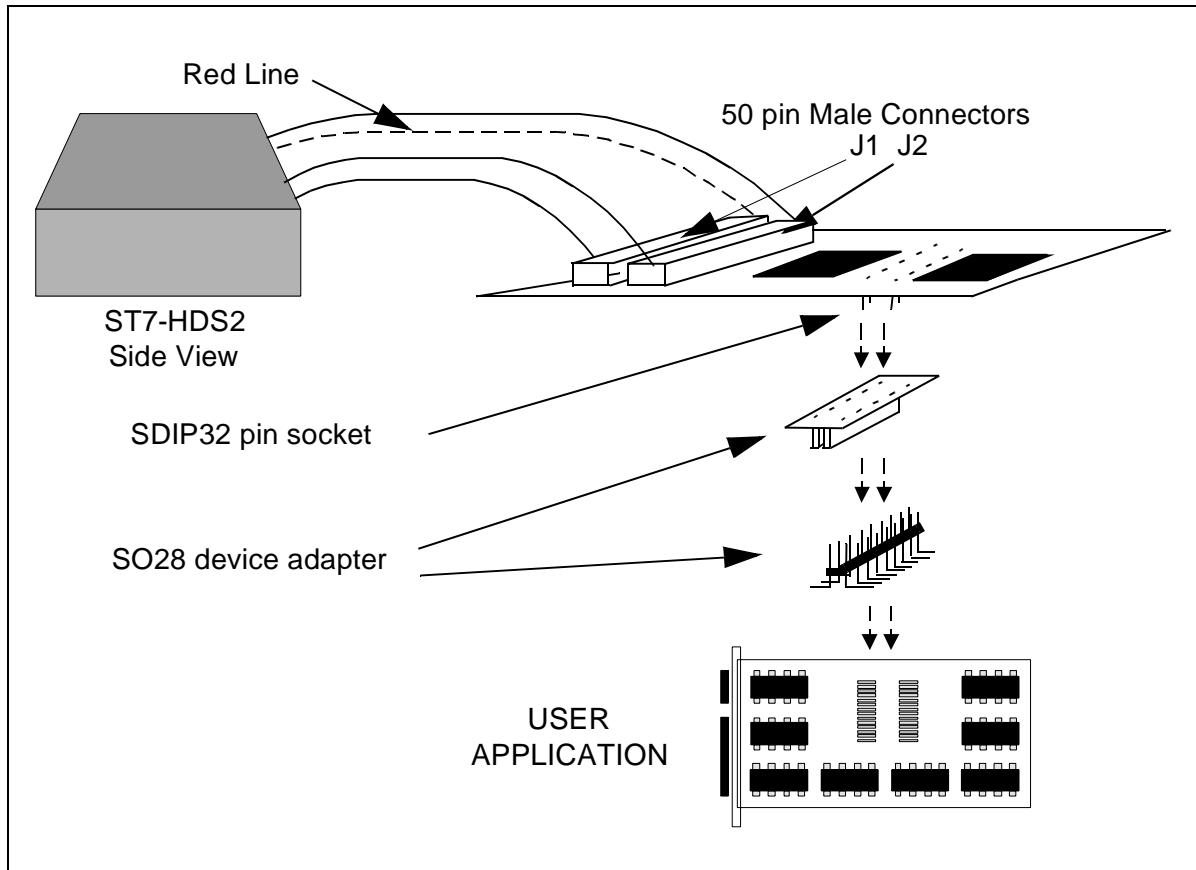


Figure 7: Connecting the SO28 probe to your application

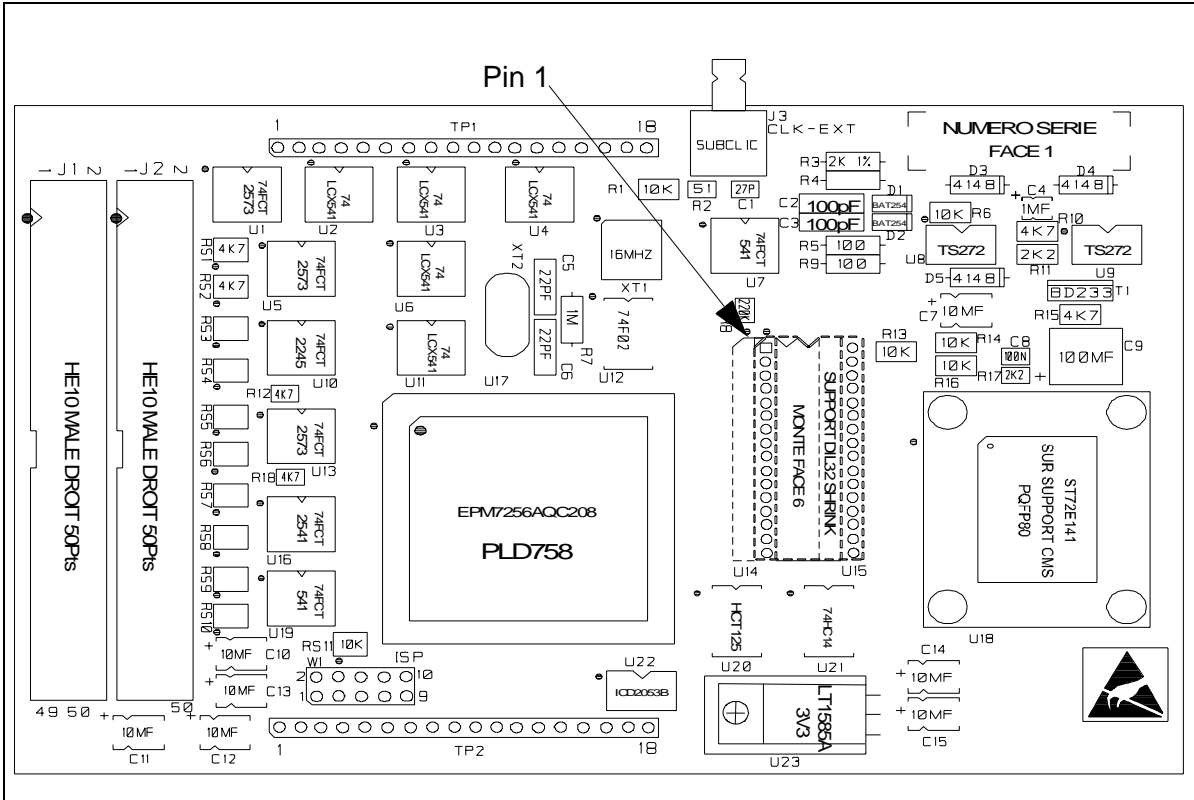


Figure 8: SDIP32/SO28 Pin 1 Location

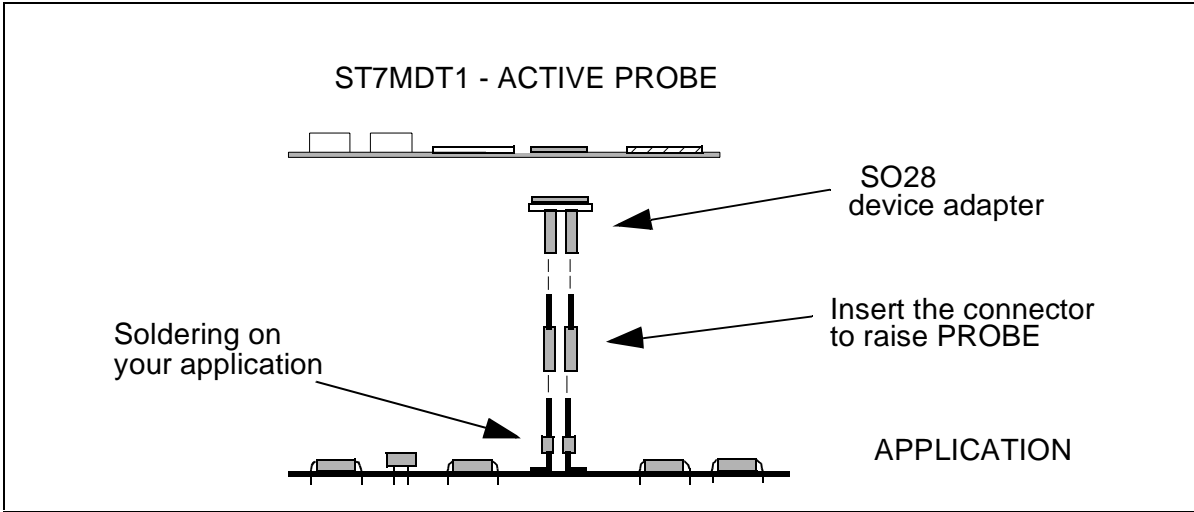


Figure 9: Connecting the SO28 connector to your application

Step 3B: Connecting the SDIP32 Probes to Your Application

Connect the ST7MDT1-Active Probe onto your application board by inserting the probe's male connector into the female pin socket on the application. The number 1 pins of these two boards must correspond.

Step 4: Connecting the emulator power supply

Warning: Make sure that both the ST7MDT1-EMU2B and the application are OFF before making any connections.

- 1 Connect the external power supply provided with the emulator to the rear panel of the mainframe using a 5-pin DIN connector.
- 2 Plug the power supply into the mains using the supply cable provided.
Mains voltage specifications

AC voltage:	100 V to 240 V
Frequency:	50 to 60 Hz

Step 5: Powering up

- 1 Check the ST7-HDS2 operating voltage (110 V/220 V) indicated on the label on the power supply. Contact your dealer if this voltage does not correspond to your mains' power supply.
- 2 Power up ST7-HDS2 from the ON/OFF switch located on the rear panel. The LED labelled **Power** on the front panel should then light up.
- 3 Power up your application.

Note: Remember that while your application V_{DD} supply must be in the 3 V to 5.5 V range to comply with the actual target MCU, the emulator only supports V_{DD} voltage range of 3 V to 5.5 V.

2.4 Debuggers supporting the ST7HDS2 emulator

The debuggers currently supporting the ST7 HDS2 emulator are:

- ST7 Visual Debug named STVD7 (STMicroelectronics)
- Hilight for ST7 (HIWARE)
- HI_WAVE for ST7 (HIWARE)
- Zap for ST7 (COSMIC)

ST7 Visual Debug is free software. It is available on the STMicroelectronics website. See *Product Support* on page 61 for more information.

The next chapter tells you how to configure your emulator and start debugging with ST7 Visual Debug.

3 STVD7

STVD7 is an integrated development environment that allows you to edit, debug and rebuild your application all from within STVD7.

The following sections tell you:

- *Section 3.1*—how to install the STVD7 software,
- *Section 3.2*—how to launch STVD7,
- *Section 3.3*—a little about STVD7's debugging features,
- *Section 3.4*—what a workspace is,
- *Section 3.5*—what toolchains and application files are supported by STVD7,
- *Section 3.6*—how to create a STVD7 workspace,
- *Section 3.7*—how to open existing workspaces,
- *Section 3.8*—how to open binary files,
- *Section 3.9*—how to change your project settings,
- *Section 3.10*—how to save workspaces,
- *Section 3.11*—how to switch from the build context to the debug context,
- *Section 3.12*—how to configure the target MCU in order to debug more accurately and efficiently.

3.1 Installing STVD7

Your emulator comes with the *MCU on CD* CD-ROM which contains a number of ST7 software tools. These tools run under the Windows[®] 95, 98 and Windows NT[®] operating systems.

To install and setup the ST7 software tools, follow these steps:

- 1 Close all other open applications on your Windows desktop.
- 2 Insert the *MCU on CD* into your CD-ROM drive. The CD-ROM's autorun feature will open up a welcome screen on your PC. If the autorun feature does not work, use Windows[®] Explorer to browse to the CD-ROM's root folder, and double-click on `Welcome.exe`.
- 3 Select ***Install Your Development Tools*** from the list of options. A new screen will appear listing the different families of STMicroelectronics MCUs.
- 4 Use your mouse to place the cursor over the ***ST7 Tools*** option. Choose ***ST Tools***, then ***ST7 Toolchain*** from the lists that appear.
- 5 The install wizard will be launched. Follow the instructions that appear on the screen.

You can choose to install the complete toolchain (i.e. the appropriate version of STVD7, the Windows Epromer and the Assembler-Linker) for each type of development tool (Development Kit, HDS2 or EMU3 emulators or simulator), or perform a customized installation.

If you choose a customized installation, you can choose to install any or all of the STVD7 versions, and/or the Windows Epromer and/or the Assembler-Linker.

Note: As a minimum, in order to use your emulator, you must install STVD7 for HDS2.

If you also install the ST7 Assembly Toolchain, you will be able to use the ST7 Assembly Toolchain as part of STVD7's integrated development environment.

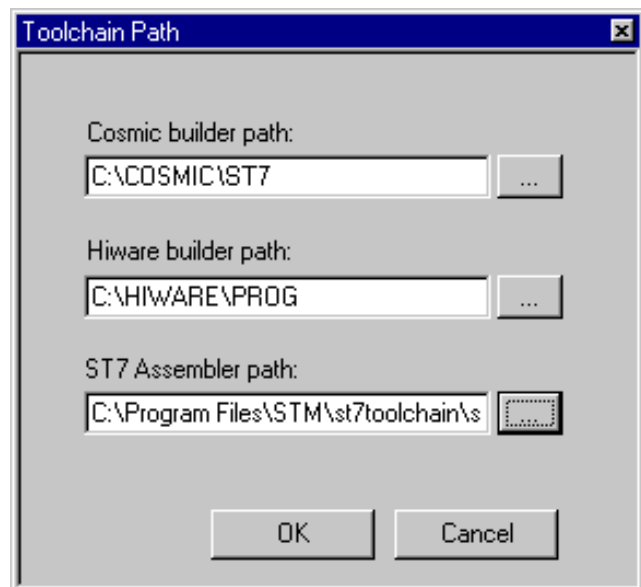
The installation is now complete. You will be prompted to reboot your computer. You should do so before launching STVD7.

3.2 Launching STVD7

- 1 From your Windows desktop, select **Start>Programs>ST7 Tool Chain>Development Tools>STVD7 HDS2 emulator**.

- 2 The first time you open a version of STVD7 you will be prompted to enter the toolchain paths to be used by STVD7's integrated development environment.

Enter the paths for the toolchains that you use (i.e. any or all of the Hiware, Cosmic or ST7 ASM toolchains) and click **OK**. (The default paths for each toolchain are shown below.)



- 3 If you choose **Cancel**, you will be prompted again to enter the toolchain paths the next time you launch STVD7.

Note: You may modify the toolchain path at any time from within STVD7—simply select **Project>Toolchain Paths** from the main menu to access the dialog box above.

3.3 About STVD7 debugging features

A number of advanced features are included in the STVD7 software:

- **Data Breakpoints** on the occurrence of a memory access via a read operation or a write operation, or both.
- **Instruction Breakpoints** on the occurrence of an opcode fetch.
- A **Logical Analyser** that allows you to control either the recording of the trace buffer, or a break in the execution of the application using a series of specific conditions (events).
- A **Trace window** to view the contents of the **trace buffer**, which permanently records in real time on 32-bits:
 - Address and data bus information.
 - Flag status and 4 external signal values.

You can record up to 1024 executed cycles. Using trace filtering, you can filter out only those cycles you wish to record in the trace buffer. You can equally control which of the recorded cycles are displayed in the Trace window using line filtering. Addresses, data, control/status bits and 4 user signals are displayed using mnemonic and user symbols.

- Internal synchronization signals can be output to either of two **Trigger Outlets** on the front panel of the emulator (OUT1 or OUT2). This feature enables you to count events using an external equipment, when optimizing software for example, or to synchronize an oscilloscope when debugging hardware.
- **Hardware Events** can be used to control the sending of signals to the trigger outputs.
- You can choose the output that you wish the signal to be sent to (i.e. either OUT1 or OUT2).
- A **Hardware Test** function that allows you to perform a number of hardware tests on the Development Board, at your choosing. Refer to *Running the Hardware Test* for more information.
- A powerful **online help** facility can be invoked at any time to give additional information about the commands, the processor or the emulator kit.

3.4 Workspaces

STVD7 organizes project development and debugging into workspaces. Workspaces allow you to store application and project settings and save them as a *.wsp file, so that each time you wish to work on the project, you will find all of the settings exactly as you left them.

Creating a workspace is the first thing that you need to do when using STVD7 for the first time or when starting any new project. You must have an open workspace to work with STVD7. How to create a new workspace is described in detail in *Section 3.6* on page 28. Sample workspaces for each supported toolchain are provided so that you can familiarize yourself with STVD7 (for a listing of sample workspaces, see *Table 1* on page 26).

Each workspace is comprised of three information sets: the project settings, the visual environment and the debugging context.

- The **project settings** consists of the information necessary for a successful build of an application (commands to run, makefile file etc....). Your workspace's project settings include the definition of your application toolchain (see *Section 3.5* on page 25).
- The **visual environment** consists of the open windows elements along with their current layout, bookmarks and other features. The visual environment is composed of two environments, one in the **Build context** and one in the **Debug context** (see *Section 3.11* on page 37).
- The **debugging information** includes information on breakpoints, memory mapping, advanced breakpoints programs, trace etc...

3.5 Toolchains and application files

A quick summary of development toolchains and application file types supported by STVD7 will help you in setting up your workspace.

Three different development toolchains are currently supported by the STVD7. Each type of toolchain has its own application file types, project environment and building tools (i.e. linkers and convertors):

- The **ST7 macroassembler toolchain** from STMicroelectronics, which generates either `.s19` or `.hex` application files with various intermediate files, such as `.map` or `.lst` files.
- The **Hiware C or Assembler toolchain**, which generates `.abs` application files with various intermediate files, such as `.o` or `.dbg` files.
- The **Cosmic C or Assembler toolchain** which generates `.elf` application files with various intermediate files, such as `.o` or `.st7` files.

When you set up a workspace, you will need to define the following project settings:

- **The toolchain to be used**—Hiware, Cosmic or ST7 macroassembler.
- **The executable application file** (`*.abs`, `*.elf`, `*.s19` or `*.hex` depending on toolchain—refer to *Table 2* on page 27).
- **The maker program** for the toolchain. The maker program can be a part of the toolchain software (such as Hiware's `maker.exe`) or you can choose to use a generic maker such as `Nmake.exe` or `Gmake.exe` (which is provided with the STVD7).
- **The maker batch file** (`*.mak` or `*.bat`). This is a file which you create for each application which spawns the compilation and/or link step each time you wish to build or rebuild. In it, you define the conditions for recompiling, re-linking or both.

Default `*.mak` or `*.bat` files are often included with the toolchains—for example, `maker.mak` is included with the Hiware toolchain and simply recompiles your application if it detects that the file has been saved since the start of your debugging session. The STVD7 software includes sample `*.mak` and/or `*.bat` files for each toolchain—these are listed in *Table 1*.

Table 1: Sample files included with STVD7

Toolchain	Sample Workspace (with default path)	Sample Make and/or Batch files (with default path ¹)	Description of Make/Batch File
ST Macro assembler	.../realtime/realtime.wsp	.../realtime/tim_rtc.bat	Batch file that forces a recompile of application file.
	.../spim11/spim11.wsp	.../spim11/spim11.bat	Batch file that forces a recompile of application file.
Cosmic	.../c/cosmic/sample.wsp	.../c/cosmic/sample.mak	Recompiles only if the application file has been resaved.
		.../c/cosmic/sample.bat	Forces a recompile of application file.
Hiware	.../c/hiware/sample.wsp	.../c/hiware/build.mak	Recompiles only if the application file has been resaved.
		.../c/hiware/rebuild.mak	Forces a recompile of application file.

1) The full default path is: C:/Program Files/Stm/st7toolchain/stvd7/hds/sample/...

3.5.1 About application files

The user should verify that the options to include debug information were active during creation of the project files. *Table 2* on page 27 summarizes the way each toolchain functions and lists the different file types (source files, intermediate files and application files) used and produced by the toolchain. The **application file types** and **intermediate file types** necessary to exploit fully the STVD7 capabilities are listed.

Table 2: Toolchain steps and their output files

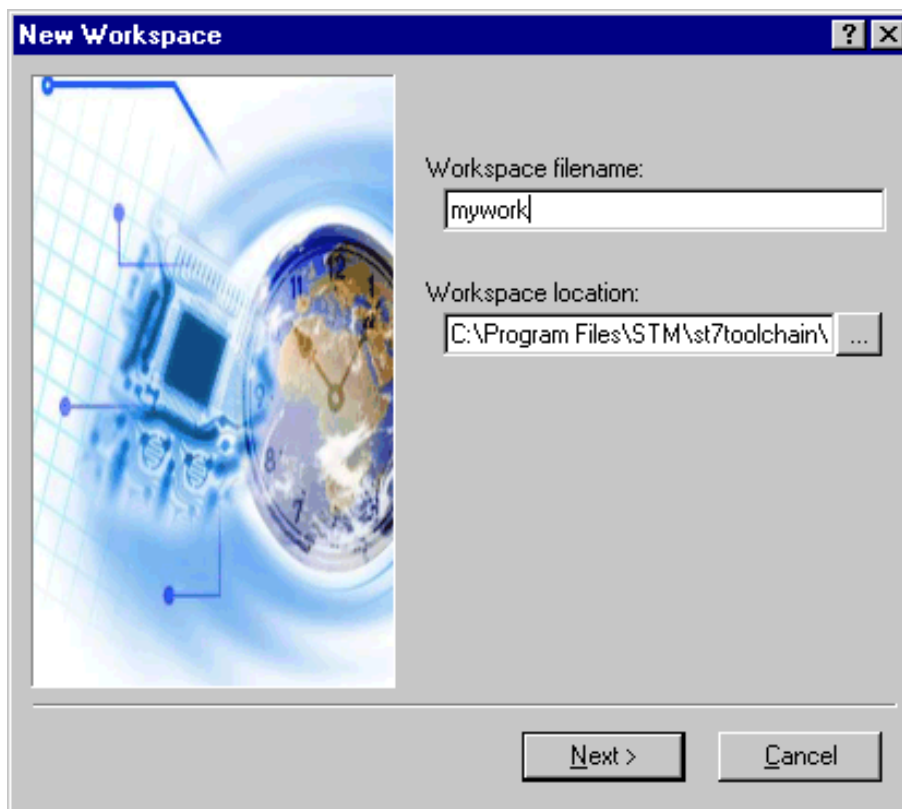
Toolchain:	ST Macroassembler	Hiware	Cosmic
Compile or Assemble Step:			
Source File Types	.asm	.c, .asm	.c, .s
Required Options	asm -li macrost7.asm	<NONE>	+debug
Resulting File Types	.obj, .lst	.o, .dbg	.o
Linker Step:			
Required Options	lyn macrost7.obj, macrost7 asm macrost7.asm -sym -fi=macrost7.map	<NONE>	<NONE>
Resulting File Types	.map, .lst	.abs	.st7
Converter Step:	obsend macrost7, f, macrost7.s19, srec or obsend macrost7, f, macrost7.hex, intel	not applicable	cvdwarf
Resulting Application File:	.s19 or .hex	.abs	.elf
Necessary Intermediate Files:	.map, .lst	.o, .dbg	<NONE>

The **application file(s)**, **source files** and any necessary **intermediate files** (these are listed above and contain debug information necessary to the STVD) should be located in the same project directory. You do this when you define your workspace.

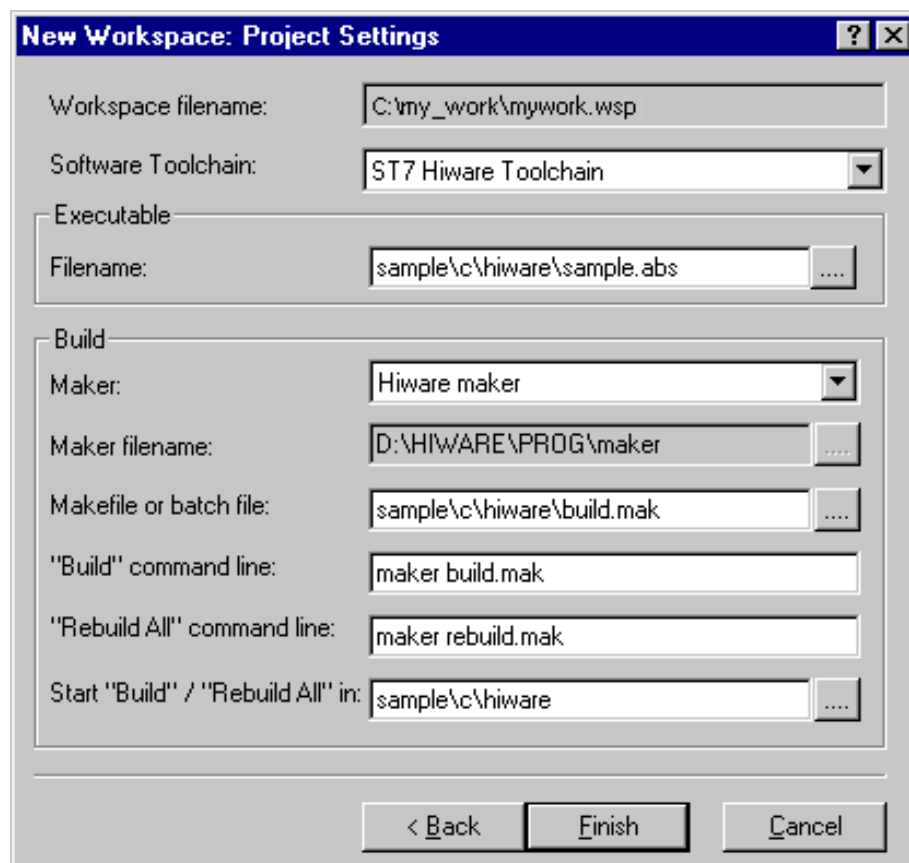
*Note: It is always preferable to have access to all of the files generated by the development toolchain. However, you can load *.s19 or *.hex binary files directly and have limited debugging capabilities (refer to Section 3.8 on page 32).*

3.6 Creating a workspace


- 1 Select **File>New Workspace**. This command opens a new window where you define the name of your workspace and the directory in which you want to work.



- 2 Then, click **Next>**. The **New Workspace: Project Settings** dialog box appears:



Here you enter your software toolchain, your executable filename and your build parameters either by typing or using the drop boxes.

- 3 Select the toolchain and enter the name of your application's executable file. For example, if you wish to use the Hiware toolchain for ST7, your executable file will be of type *.abs (refer to *Table 2* on page 27)—click on the browse button  to browse to the folder where your executable file is saved and select it.
- 4 Next, choose the type of maker your application uses from the drop down list. In the example above, we have chosen the default Hiware maker, maker.exe. STVD7 will automatically look for this maker file in the folder you defined as the Hiware toolchain path.
- 5 Finally, you must define a make file or a batch file. There are several sample files provided with STVD7 (see *Table 1* on page 26). Here we have chosen

`build.mak` as the default make file, used when the **Build** command is issued, and `rebuild.mak` as the make file to use when the **Rebuild** command is issued.

- 6 After you have finished defining your project settings, click **Finish**.

Once the workspace is opened, the Workspace window displays its contents.

When you create a new workspace, the first time you switch to Debug context (see [Section 3.11](#) for an explanation of STVD7 contexts), the MCU Configuration window will automatically open to prompt you to choose your target MCU and confirm or modify its option and memory configuration (see [Section 3.12](#) on page 38).

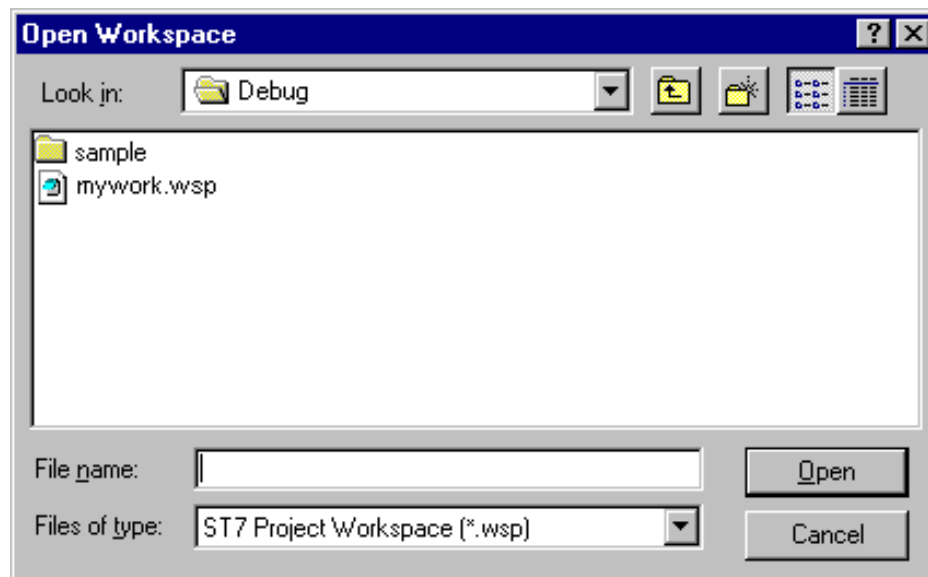
3.7 Opening an existing workspace

If you have already created a workspace, you simply need to open it in order to load all of your project settings into the STVD7.

Note: There are a number of sample workspaces provided with STVD7 that you can open to get familiar with STVD7. These samples are listed in [Table 1](#) on page 26.

- 1 From the main menu, select **File>Open Workspace**.

This command opens a window where you can browse to any folder you wish, and select an existing workspace.

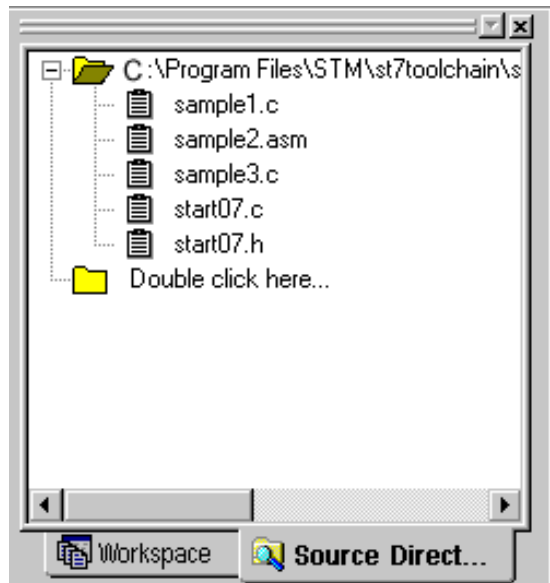
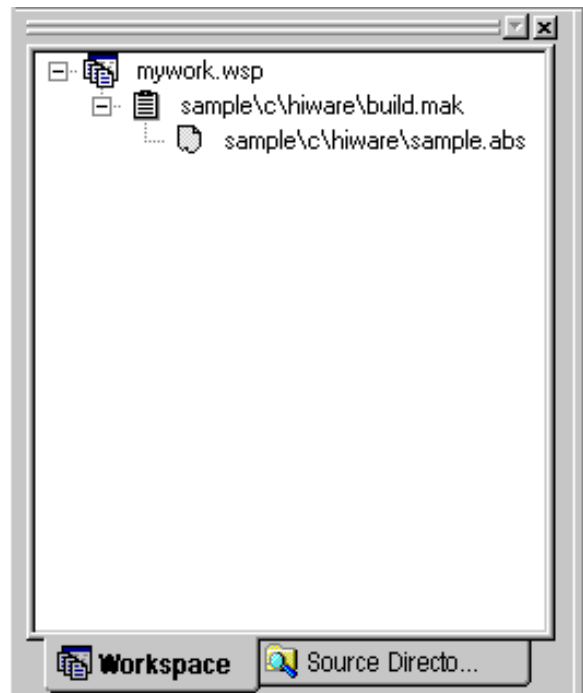


2 The Workspace window opens.

When a workspace is opened, all of the predefined project settings are loaded into the STVD7. The **Workspace** window will show a structured representation of the project. For example, `mywork.wsp` shows that it uses `build.mak` as the make file and `sample.abs` as the application file.

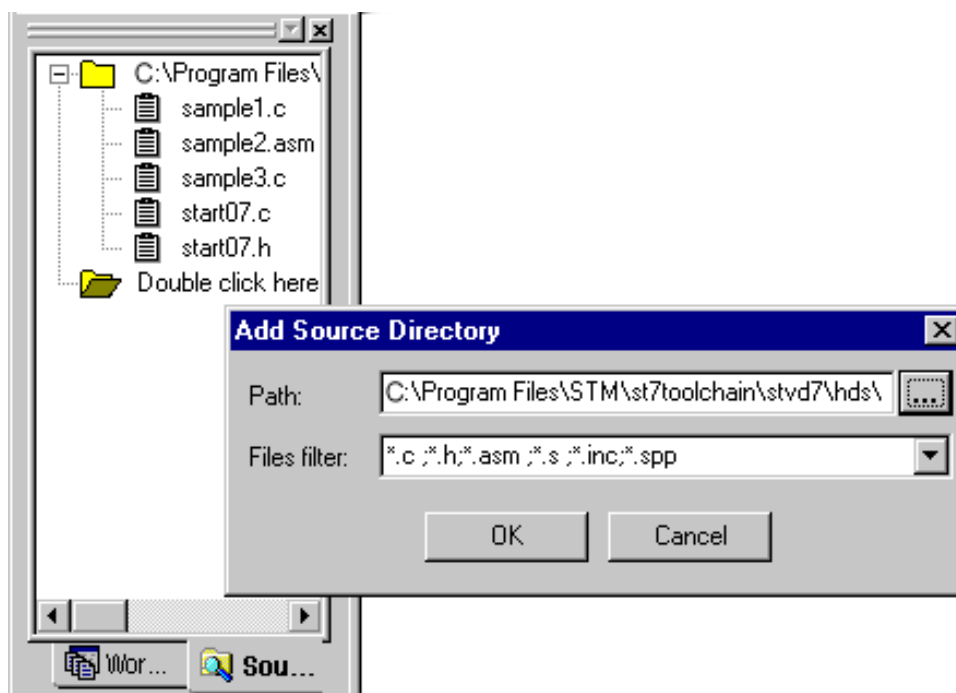
Note: Although the name of the application file is shown in the Workspace window, it has not yet been loaded into the emulation memory—see page 32.

If you click on the **Source Directory** tab, the window will show every source and intermediate file type (*.c, *.s, *.asm, *.h or *.o) in the selected directory.



3 If there are no source files shown in the Source Directory tab of the Workspace window, or you wish to list additional files stored in another folder, you may browse to them by clicking the **Double Click here...** folder. The **Add Source**

Directory window pops up allowing you to enter or browse for a new directory, and filter out the file types of interest.



- 4 To load the application file, as well as any intermediate files, click the Debug icon or the Reset Chip icon. The application and symbols will be loaded. Before you can start debugging, you must set the target hardware device by configuring the MCU.

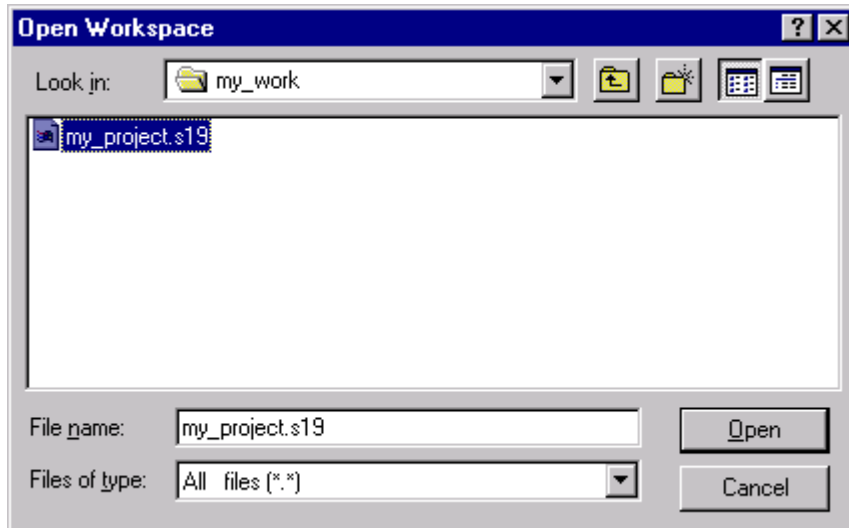
3.8 Opening binary files

If you do not have access to the source or intermediate files generated by a toolchain, you may also load **.s19** and **.hex** files on their own using the **Open Workspace** command.

Note: The range of debugging features available when you open a binary file only will be very restricted. You will only have access to the Disassembly Window.

- 1 Launch STVD7 and select **File>Open Workspace** from the main menu.

- 2 Browse to the folder where your binary file is stored, and select **All files (*.*)** in the *Files of type* field.

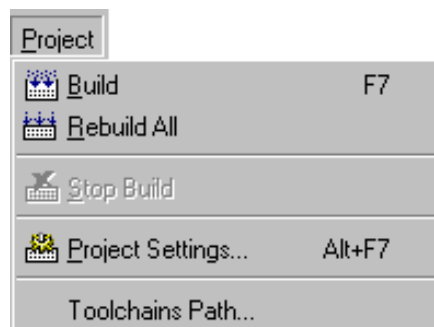


- 3 Select your binary file (*.hex or *.s19) and click **Open**.

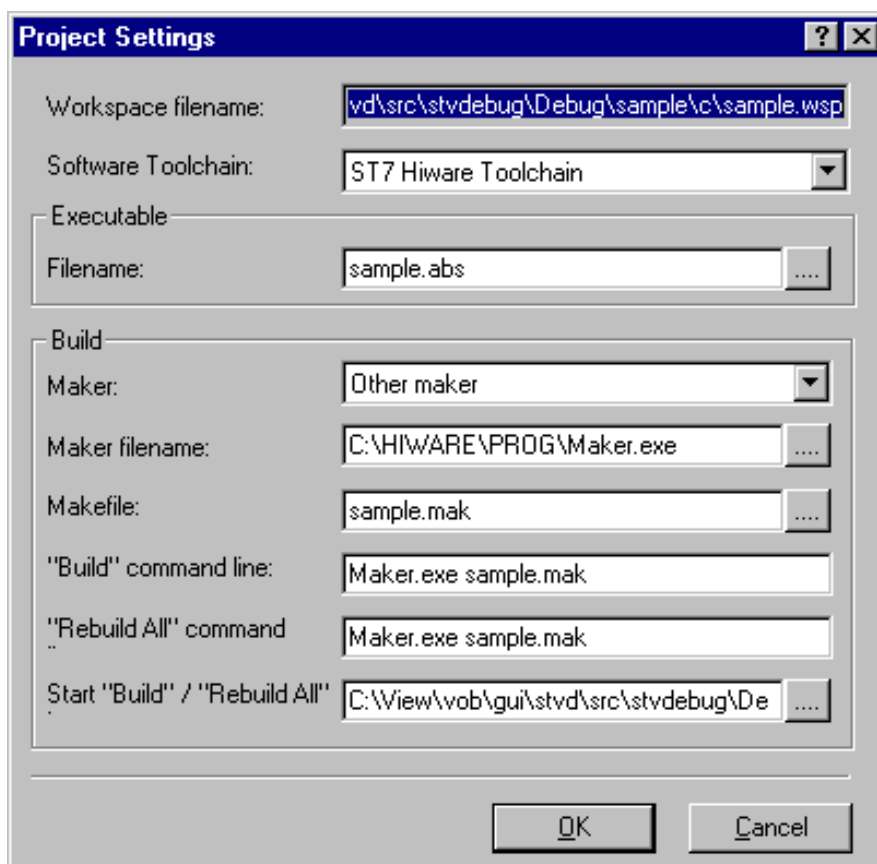
The binary code in the .s19 or .hex file will be loaded into STVD7 and you will be able to access the Disassembly Window. A workspace file (of the same name as the binary file, but with an extension .wsp) will be created automatically.

3.9 Changing your project settings

The Project menu contains the **Build** and **Rebuild All** commands you need to recompile your application after having made changes to it in the course of debugging. You may also access your project or toolchain settings in the event you wish to change them.

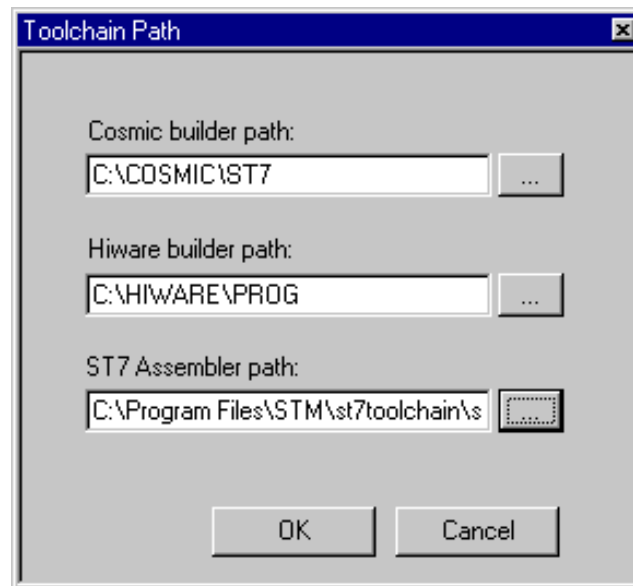



From the main menu, select **Project>Project Settings**.



You can change your settings here and continue running your application. When you exit STVD7, the system will ask you if you want to save these settings in the workspace you have been working in. If you choose **yes**, these will become your new workspace settings; if you choose **no**, these settings will be lost.

The **Toolchain Path...** item invokes the following window:



In this window, you can define your builder and/or Assembler paths. Clicking  opens a browser window.

3.10 Saving workspaces

Whenever the current workspace is closed, it is automatically saved. This can happen either when exiting STVD or opening or creating a new workspace.

In addition to this, a workspace can be explicitly saved with the **File>Save Workspace...** or **File>Save Workspace as...** commands.

The user is given the choice of which of the workspace elements to include in the saved file. Either the **visual environment** or the **debugging information** may be saved alone, or both may be saved together. This is configured as follows:

- 1 From the main menu, select **Tools>Options**.
- 2 In the Options window that opens (see *Figure 10 on page 36*), select the **Workspace** tab.
- 3 Choose whether you wish your saved workspace to include either the visual environment or the debugging information or both.

- 4 Select which windows will appear docked when a project is opened by checking the appropriate check boxes in the *Floating windows in the main frame* area. Only windows currently docked in the main window can be included.

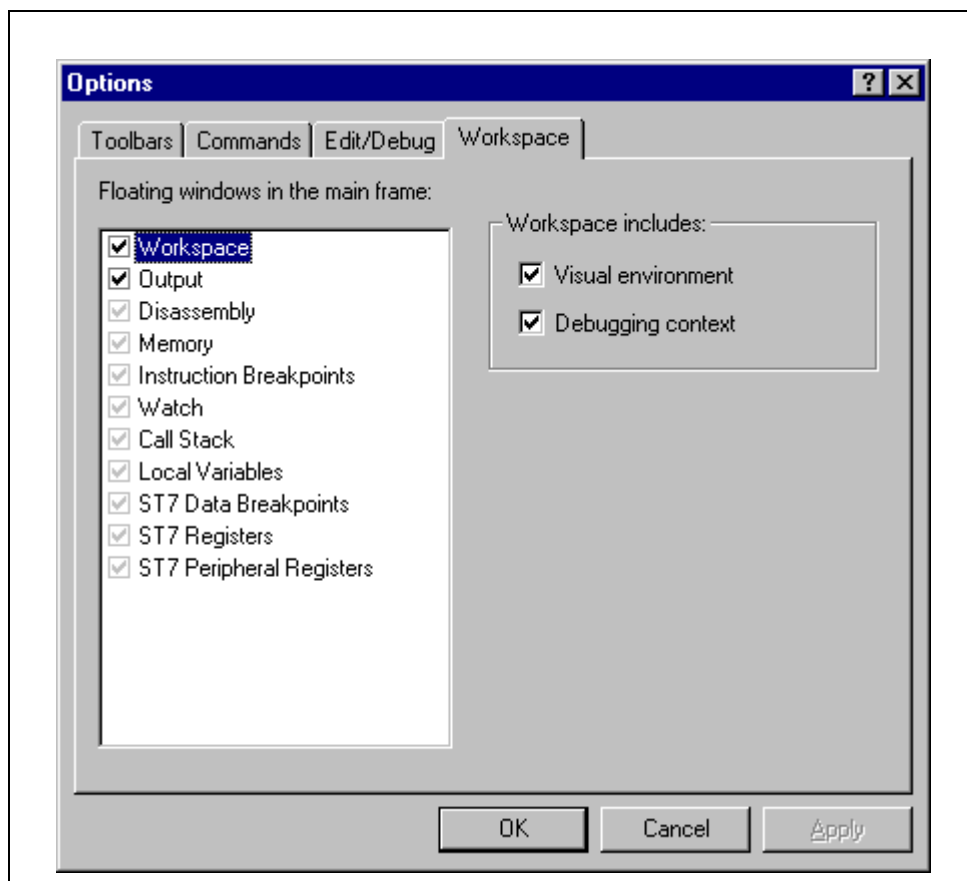


Figure 10: Options window

- 1 Click **Apply** to confirm your settings.
- 2 Click **OK** close the dialog box.

In addition, open file contexts and current window positions are saved when the workspace is closed. This feature restores the workspace window, window layout and file views to that which was current when STVD7 was closed. The toolbar layout, plus customized toolbar content is also saved and restored with the workspace (options set via the tabs entitled **Toolbars** and **Commands**).

By default (i.e. when saved automatically) the workspace is saved as file `<application>.wsp`. The name of the file corresponds to the name used for the executable file (for example, `<application>.abs` for a Hiware application file).

Note: Using the **Configuration Setup** dialog box (available from the MCU Configuration dialog box), you can also control what type of MCU configuration information is restored from a workspace file (*.wsp).

3.11 Debug context and Build context

There are two STVD7 contexts, the **build context** and the **debug context**. Until now, in creating a workspace, and defining your project settings, you have been in the build context. To proceed step—configuring your MCU—you need to change to the debug context.

Briefly, the two contexts are different in that:

- In the build context, you can open and close workspaces and build or re-build the application executable file.
- In the debug context you set the emulated MCU configuration (this step is described in *Section 3.12* on page 38) and debug the executable file created while in the build context.

3.11.1 Build Context

The build context is the context set when starting STVD7. In this context, it is not necessary to be connected to an emulator and the debug commands are not available. You can also edit the source files of an application and perform the use the **Build** command to perform compile and link actions in an interactive and iterative way to re-build the application executable file.

3.11.2 Debug Context

In this context, the following debug actions can be carried out:

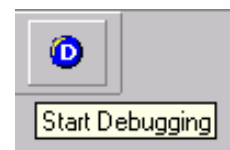
- Loading, running and stopping the application.
- Defining the MCU configuration (MCU options and memory mapping).
- Viewing source and disassembled code.
- Setting instruction breakpoints with a counter and/or condition.
- Setting data breakpoints.
- Viewing local variables, memory and ST7 registers.
- Viewing history of execution from the trace buffer or with the Call Stack feature analyzing the performance of a piece of code.

3.11.3 Switching between contexts

The switch between contexts usually occurs when the **Start Debugging** and **Stop Debugging** commands are used:

From the main menu, choose **Debug>Start Debugging** or **Stop Debugging** or click on the **Start Debugging** or **Stop Debugging** icons shown at right.


While debugging, the editor allows source files to be modified. To switch to the Build context perform either a **Build** or **Rebuild** action or use the **Stop Debugging** command.



3.12 Configuring the MCU

After you create or open a workspace, the next step you must perform before starting your STVD7 debugging session is to define and configure the target device (MCU) that you wish to emulate.

The target device is defined and configured from the MCU Configuration window.

- 1 First, ensure that you are in **Debug context** by clicking on . (STVD7 has two contexts: Debug context and Build context—these are described in *Section 3.11.*)

Note: The first time you enter into the Debug context after having created a new workspace, the MCU Configuration window will be opened automatically.

- 2 Select **Tools>MCU Configuration** from the main menu. The MCU Configuration window will open.

An example of a typical MCU Configuration window is shown in *Figure 11*.

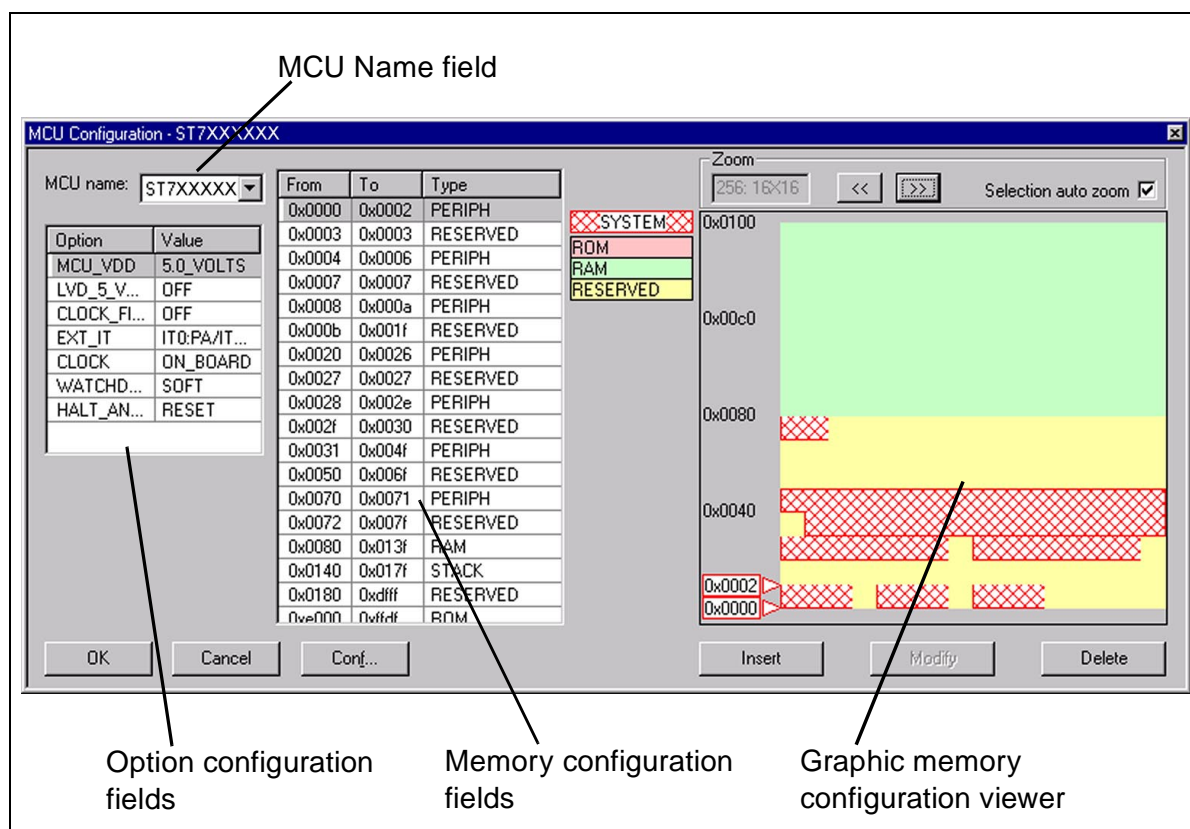


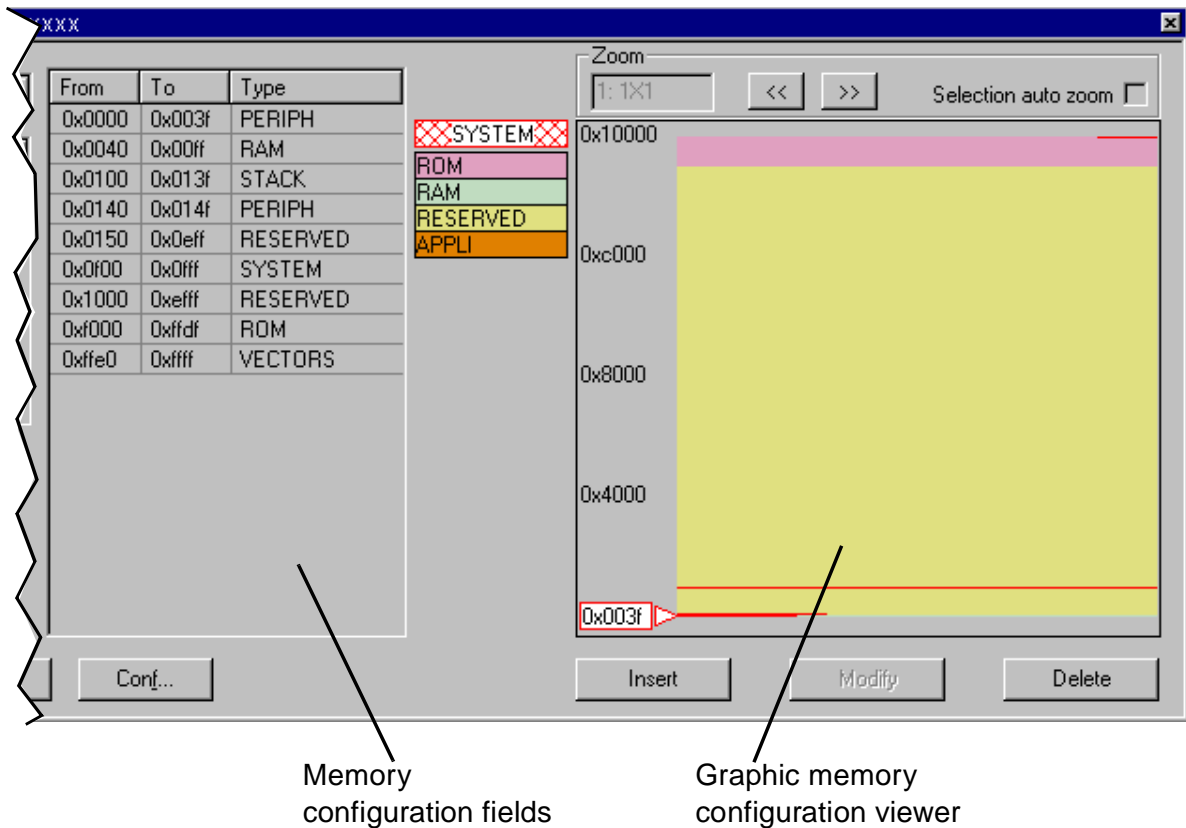
Figure 11: MCU Configuration window

Note: The options shown in the above example may not be available for your particular target MCU.

- 3 Set the Target MCU.** In the MCU name field, select the target device for which the application is intended from the dropdown box. Once a target MCU has been chosen, the *Option configuration* and the *Memory configuration* fields will show the default values for this device.
- 4 Configure the MCU Options and On-Chip Peripherals.** All of the configurable options on your target hardware device are listed in the *Option configuration* fields. Beside each *option*, a default *value* is given. You may change this value by clicking on it and choosing a new value from the drop down list. This allows you to configure your target device's options and on-chip peripherals. Depending on the MCU selected, the default settings in the *Option configuration* fields will change. It is up to you to configure those options that will impact your application so that the emulator accurately emulates your target device.

Note: For more information about the configurable options available on your target hardware device, please consult your target MCU's datasheet.

5 Configuring the MCU Memory. The default memory settings depend on the MCU selected. However, you can configure the memory settings as you wish if your application requires non-default settings. This feature would enable you, for instance, to temporarily increase the ROM size during the development phase of your application.



There are two methods for configuring the memory settings on the MCU: by typing in the start and stop addresses of each memory zone into the **memory configuration window**, and by graphically moving the memory zone boundaries in the **graphic memory configuration viewer** (see page 42 for more instruction).

Memory zone types

The left column of the **memory configuration window** indicates the address range of each memory zone. The right column indicates the memory type of each zone. Depending on your target MCU, the available memory types may be: Peripherals, RAM, ROM, Stack, System, EEPROM, Reserved, Vectors,

Application. Some of these zones can have their type and size modified, others cannot be modified. Their definitions and properties are explained as follows:

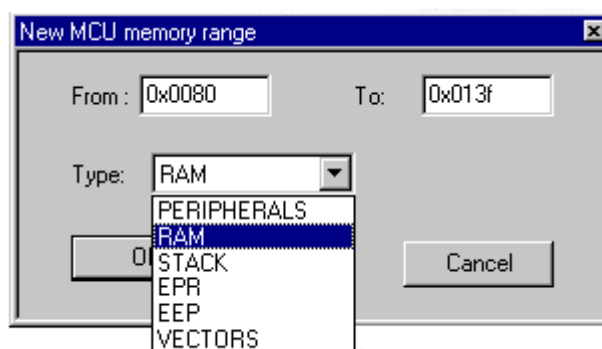
- **Peripherals:** Microcontroller internal or rebuilt peripherals registers. Their properties are defined as in the microcontroller user manual. This memory cannot be modified.
- **RAM:** Random-Access-Memory of the microcontroller. This memory type can be modified.
- **ROM:** Read-Only Memory of the microcontroller. Write protected. This memory type can be modified.
- **Stack:** Stack of the microcontroller. This memory type cannot be modified.
- **System:** The emulator uses this space for emulation management. This memory type cannot be modified.
- **EEPROM:** This memory is internal to the microcontroller and is located inside the emulation device. The programming of this zone is done according to an automaton found in the user manual. This memory type cannot be modified.
- **Reserved:** This memory zone is reserved as on the microcontroller. It is not allocated to any use and is write protected. This memory type cannot be modified.
- **Vectors:** This memory zone contains the user interrupt vectors zone. It is write protected. This memory type can be modified.
- **Application:** This memory type is microcontroller-specific. The user can add memory or peripheral resources on its hardware. It is not available on every emulator. Properties are linked to the user hardware. This memory type can be modified.

For most target MCUs, you may modify the following types of memory zone: **RAM**, **ROM**, **Reserved** and **Application**. This feature would enable you, for instance, to temporarily decrease the RAM zone, increase the size of the ROM (to exceed what is available on the real microcontroller) during the first stages of development. Once your program is functional, you can start to optimize its size by reducing your code and returning these zones to their original size. There are two different actions you may perform on the memory configuration:

- change the type of an entire existing zone.
- define a new zone of any type wherever possible.

To change an existing memory zone:

- 1 Select the memory zone to be modified.
- 2 Click on the **Modify** button at the bottom of the window. A **New MCU Memory Range** dialog box will open, allowing you to change either the address range and/or the memory type of the memory zone.

**To create a new zone of any type:**

- 1 Click on the **Insert** button. The **New MCU Memory Range** dialog box will appear.
- 2 Enter the address range of the new memory zone in the *From* and *To* fields.
- 3 Select the type of the new memory zone in the *Type* field.
- 4 Click **OK** to validate your choice.

The new memory zone will then appear in the **MCU Configuration** window **unless** you tried to create a new zone in a non-modifiable memory space (such as Stack or EEPROM).

To use the Graphic Memory Configuration viewer:

- 1 In the memory configuration window, click on the zone whose boundaries you wish to move.
- 2 Check the **Selection auto zoom** box in the upper right-hand corner. The graphical view of the memory configuration will be scaled so that the zone you have selected is easily visible.
- 3 At the upper and lower boundary of the zone, at the left-hand side of the graphical viewer, you will see a small triangle and rectangular box giving the boundary addresses of the memory zone. You can change a boundary address by dragging and dropping the triangle with the mouse to its new location. The triangle can be moved either up or down, left or right in the graphical viewer.

The MCU configuration that you specify will, by default, be saved in a workspace file (*.wsp) for the project. The next time the application is opened, the STVD will automatically set the MCU configuration (as well as the layout of opened windows and other debug information) to the same conditions you had when you left the last debugging session.

If you do not wish your MCU configuration information to be saved in the workspace file, you must alter the default Configuration Setup options by clicking on the **Conf...** button.

3.13 Start debugging!

Once in **debug context**, you are now ready to start debugging your application using the emulator. Full documentation on how to:

- control your STVD7 work environment
- use its integrated editor
- use the many debugging windows and features

is available from the online help and the online STVD7 user manual, located under **Help** in the main menu.

4 EMULATOR FEATURES

4.1 Main Features of the ST7 HDS2 Emulator series

The features described below are common to all ST7 HDS2 emulators:

- Real-time emulation capability (internal frequency from internal 0.5 MHz up to 8 MHz).
- Full memory emulation (up to 64 KB).
- Real-time trace with 3 event conditions allowing selective recording.
- Hardware breakpoint capability on instruction Fetch.
- Hardware breakpoint capability on address.
- Breakpoint capability on invalid address access.
- Breakpoint capability if trace is full.
- 1K x 32-bit real-time trace (address, data, ctrl).
- 6 different modes to configure trace access by combining 3 event conditions.
- Selective trace recording capability.
- 2-Trigger output capability.
- Can use as an external clock source either the on-probe oscillator, or an external source via the front panel input.
- 4 probe inputs to display application signals in the trace.

4.2 Specific Features

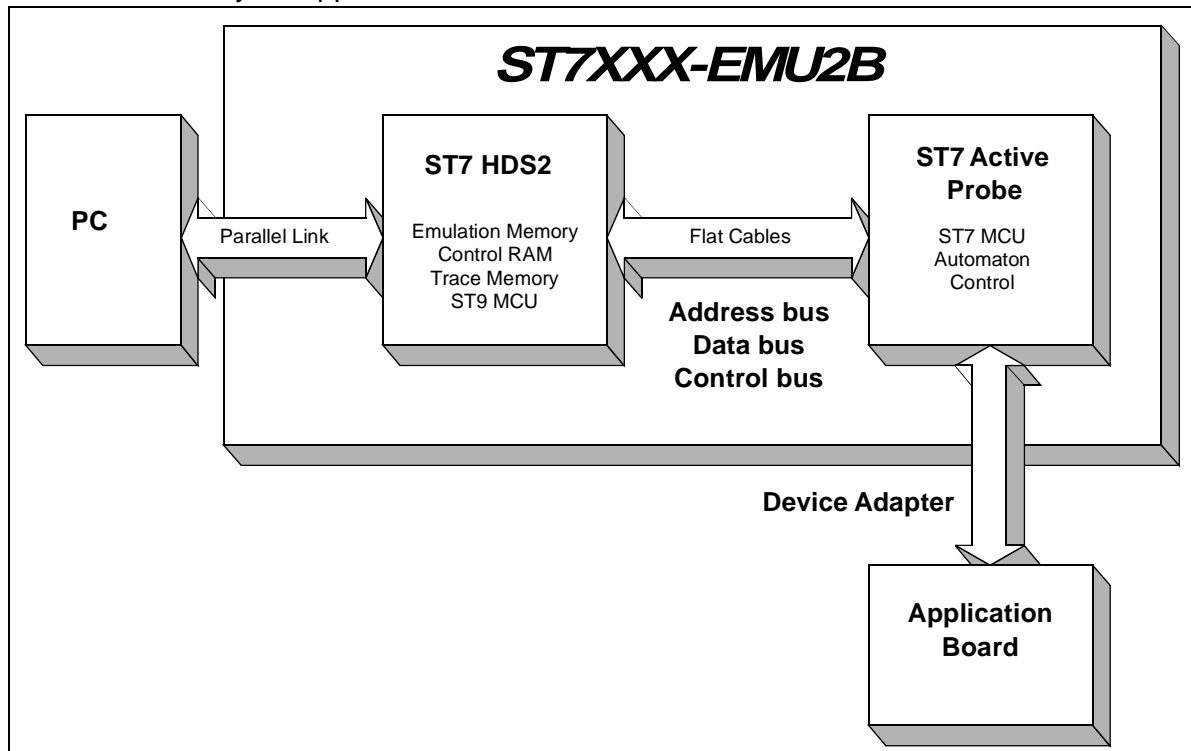
The features described below are specific to the ST7MDT1-Active Probe:

- Clock source selection.
- The application power supply follower allows this emulator to run with application V_{CC} from 3 V to 5.5 V. When the probe is not connected to an application board or if the application board is not powered (application $V_{CC} < 3$ V), the V_{CC} default value is 3 V.
- All I/O pins of the ST72254 and its sub-family are directly interconnected to the user application board. No buffers or protective devices are inserted on the probe.

4.3 Emulator Architecture

The ST7MDT1-EMU2B emulator is composed of 2 parts:

- The **ST7 HDS2** (Hardware Development System) contains all of the common resources necessary to emulate any ST7 device (such as memory and the link interfaces with the PC). This board is connected to the PC via a parallel link and to the second part by two 50-pin connectors.
- The **ST7MDT1-Active Probe** contains the specific resources necessary to emulate the ST7MDT1 devices, and is used as a link between the ST7 HDS2 and your application.



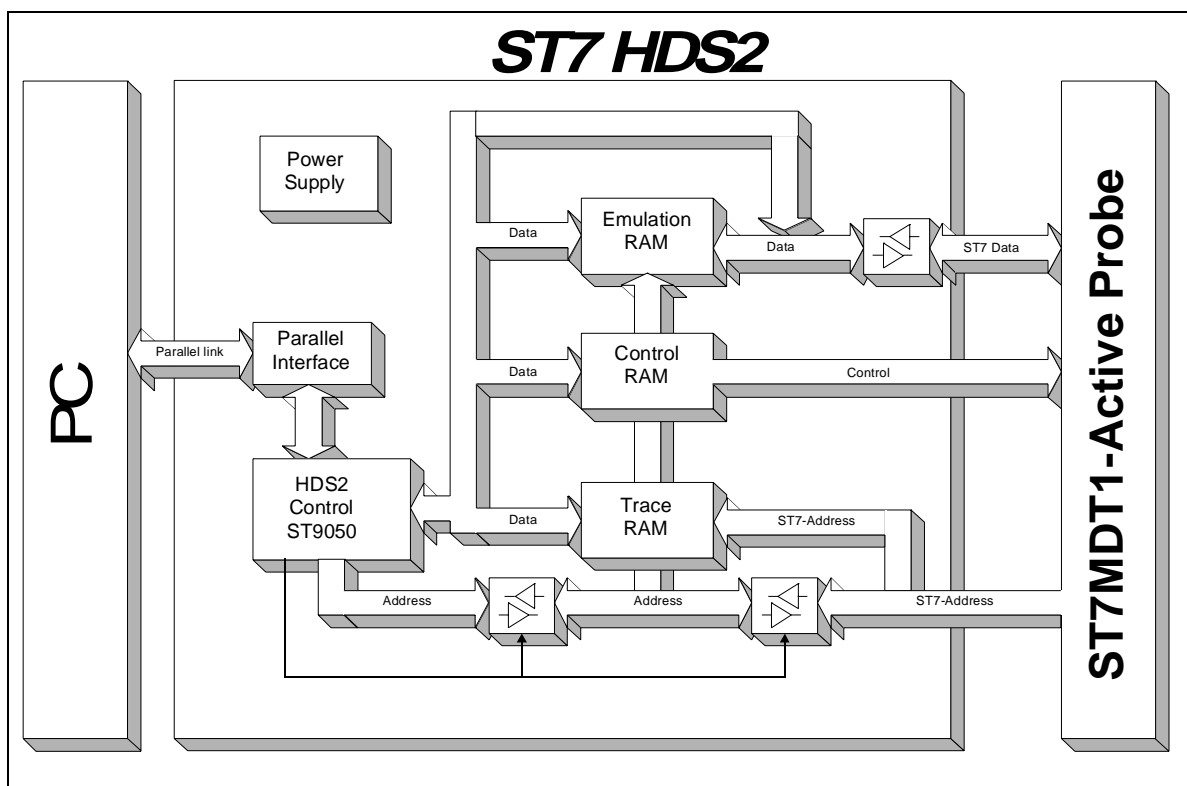
4.3.1 ST7 HDS2 Hardware

The hardware functions provided by this component are listed below:

- **HDS2 CPU:** Used to control the ST7XXX-HDS board and to manage common HDS2 features such as the parallel link with the PC.
- **RAM memory:**
 - 64K bytes for ROM and RAM emulation.
 - 64K bytes as break points control and Mapping.
 - 1K x 32-bit as trace memory.
- **Hardware breakpoint control logic** to manage breakpoints from the 16-bit address bus.
- **Logical analyser control logic** to manage sophisticated recording and break

events in the trace.

- **PC link:** parallel interface for communication with PC.
- **ST7MDT1-Active Probe interface**—3 buses connect the ST7 HDS2 to the **ST7MDT1-Active Probe**:
 - Address bus (16-bit) of the ST7 emulation chip used for RAM addressing and trace.
 - DATA bus (8-bit) of the ST7 emulation chip.
 - Control bus to manage ST7MDT1-Active Probe hardware-like breakpoint features.



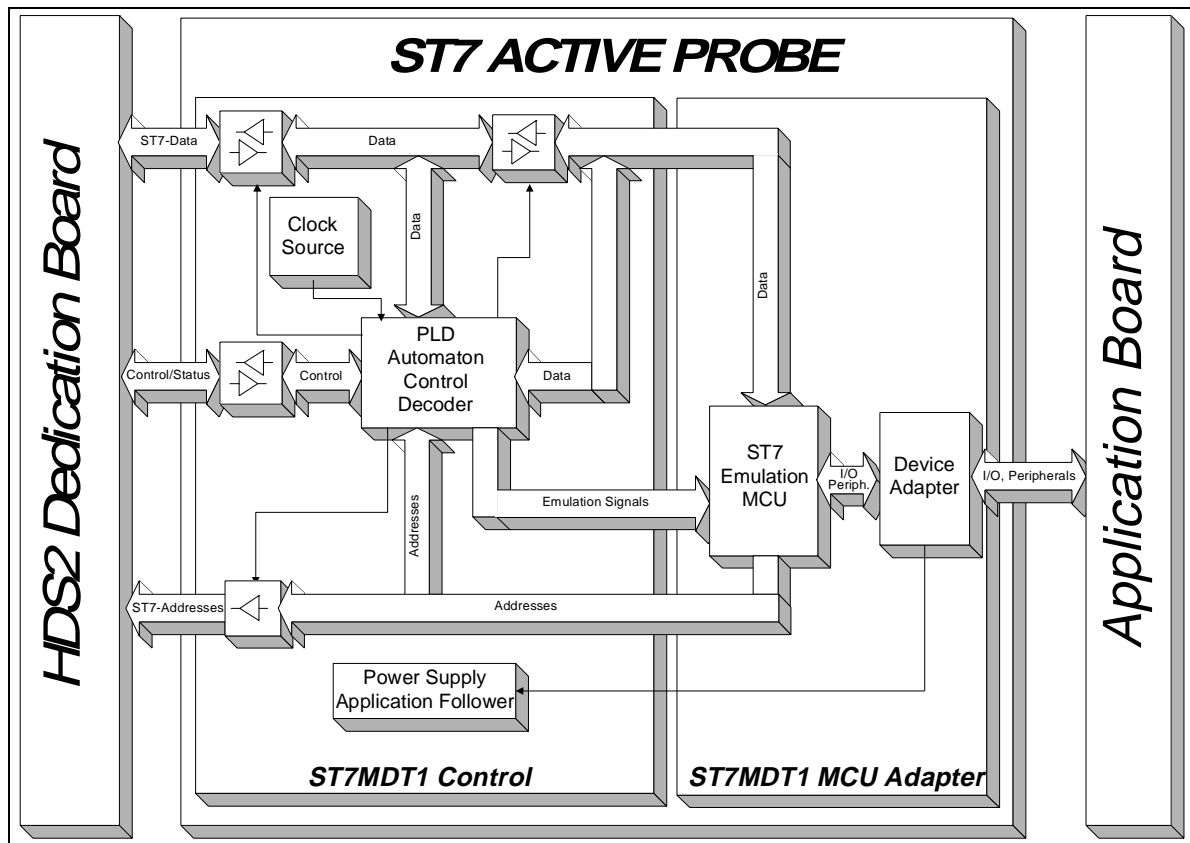
ST7MDT1-Active Probe Hardware

The hardware functions provided by the ST7MDT1-Active Probe are:

- **Probe Emulation MCU:** This is an ST7 microcontroller similar to those of the emulated target device(s), which runs in emulation mode. It acts as the ST7 core and gives access to all on-chip peripherals.
- **Control logic:** Control logic is provided to manage the software execution by the user (i.e. program running and halting).
- **Application V_{CC} follower:** The probe emulation MCU is supplied with the

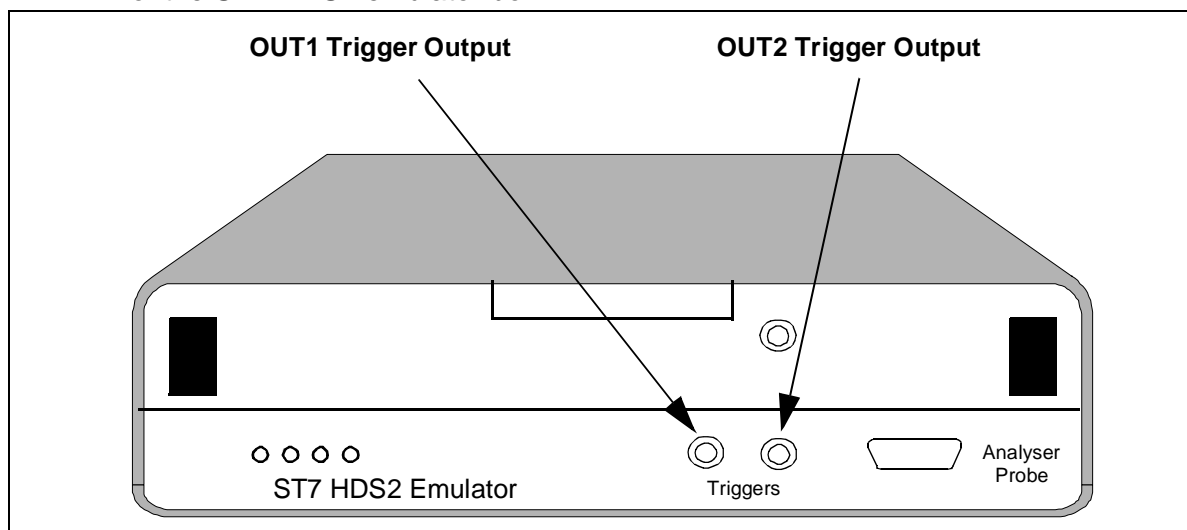
same voltage as the application (i.e. must be in the range 3.5 V to 5.5 V).

- **ST7 HDS2 interface:** All of the communication buses connecting the active probe to the ST7 HDS2 board are buffered:
 - ST7 Address bus (16-bit) of the ST72254 in emulation mode.
 - Data bus (8-bit) of the ST72254 in emulation mode.
 - ST7 emulation chip control bus for trace recording, breakpoints and memory mapping.



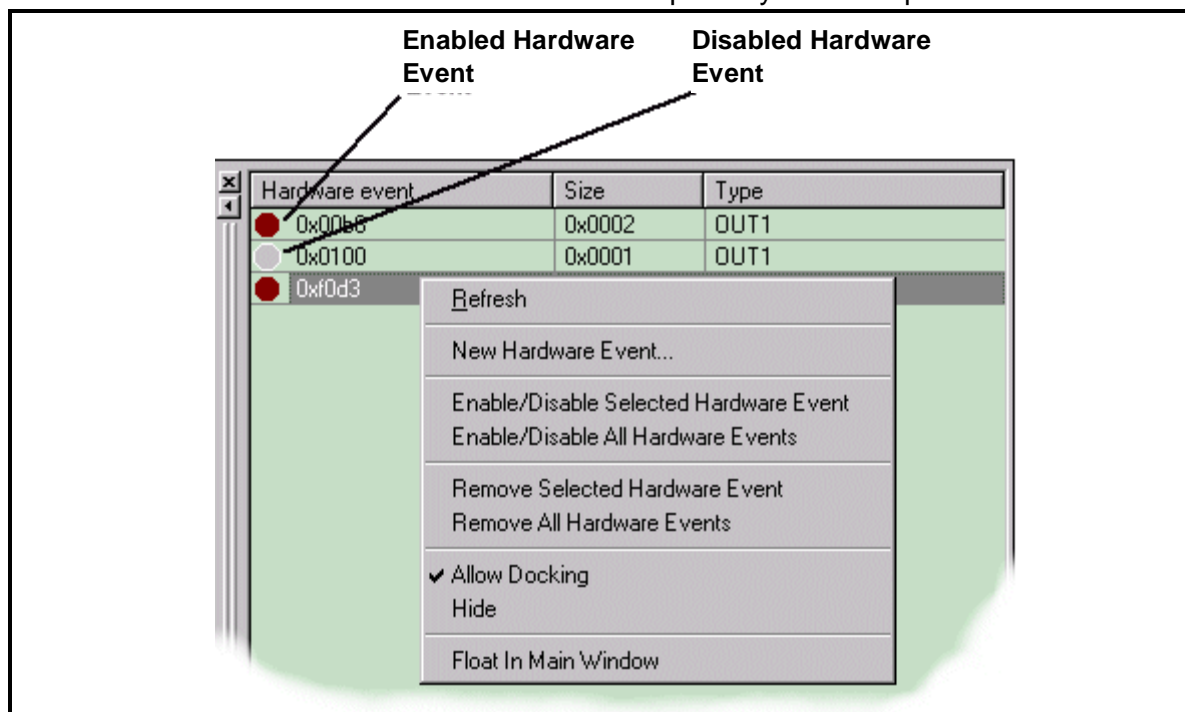
4.4 Output Triggers

Your ST7 HDS2 emulator has two output triggers, OUT1 and OUT2. The OUT1 and OUT2 outlets are available via SUB-click connectors located on the front panel of the ST7 HDS2 emulator box.

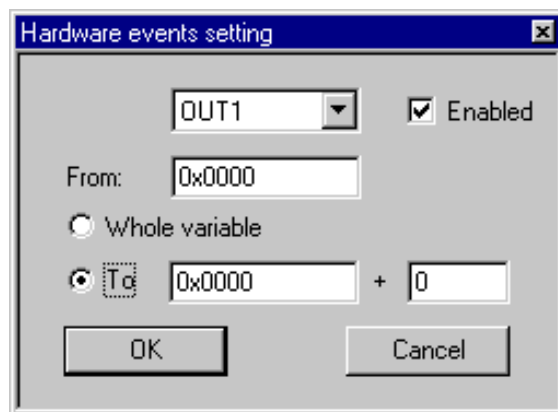


You can program the output signals to these triggers using ST7 Visual Debug:

- 1 From the main menu in ST7 Visual Debug, select **View>Hardware Events**. The Hardware Events window will open in your workspace.



- 2 Right-click the mouse while the mouse pointer is anywhere in the **Hardware Events** window.
- 3 Choose **New Hardware Event** from the contextual menu. The **Hardware event settings** dialog box will open as below.

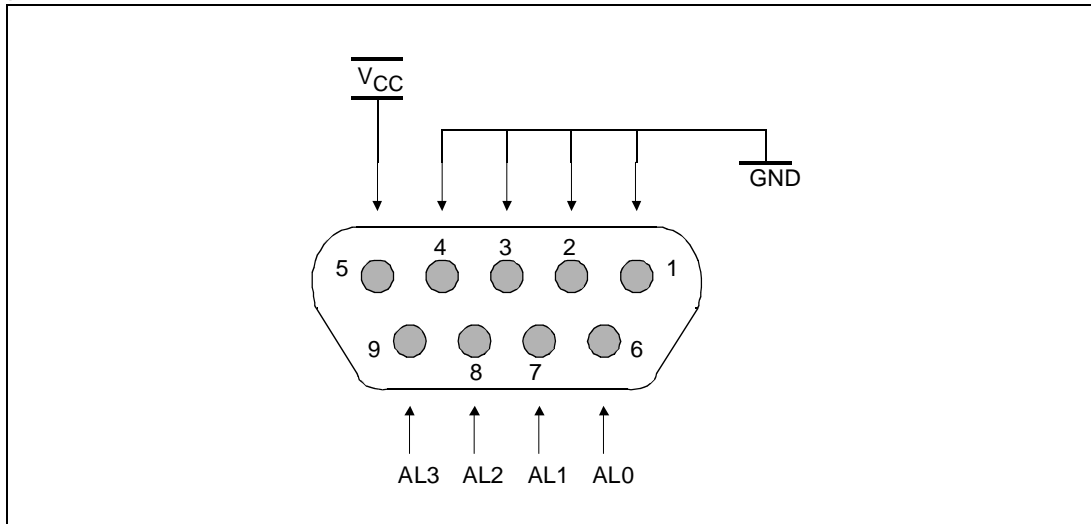


- 4 Choose the trigger output that you wish the signal to be sent to (i.e. OUT1 or OUT2) and check the **Enabled** box.
- 5 You may trigger output signals by setting an event on any of the following:
 - **a whole variable**—creating an *event for synchronization*, which enables you to preset the pulse synchronization for external equipment connected to the output trigger.
 - **a single address**—also creates an *event for synchronization* (see above).
 - **a range of addresses**—creating an *event to measure time*, which enables you to measure the time elapsed during a subroutine execution.

A positive impulse is emitted on OUT1 and OUT2 when a specific condition is met. This impulse lasts for one Clock cycle.

4.5 Analyser Probe Input Signals

The ST7 HDS2 allows you to use 4 external input signals (TTL level). These signals are on pins 6,7,8,9 of the Analyser Probe connector located on the front panel of the emulator as shown below.



You can view these probe inputs using ST7 Visual Debug. From the main menu, select **View>Trace**. The input signal values are listed under the Sig column (AL3..0).

ST7 Visual Debug's **Logical Analyser** allows you to use these input signals to define trace filtering or output trigger events. From the main menu, select **Tools>Logical Analyser** to open the dialog box. A full description of how to use this facility to control trace recording or trigger output signals is given in the ST7 Visual Debug online help.

A rainbow-colored cable will also be delivered to connect your application to these inlets. Each red connector is to be connected to your signal. Each black connector is to be connected to the reference ground for the signal.

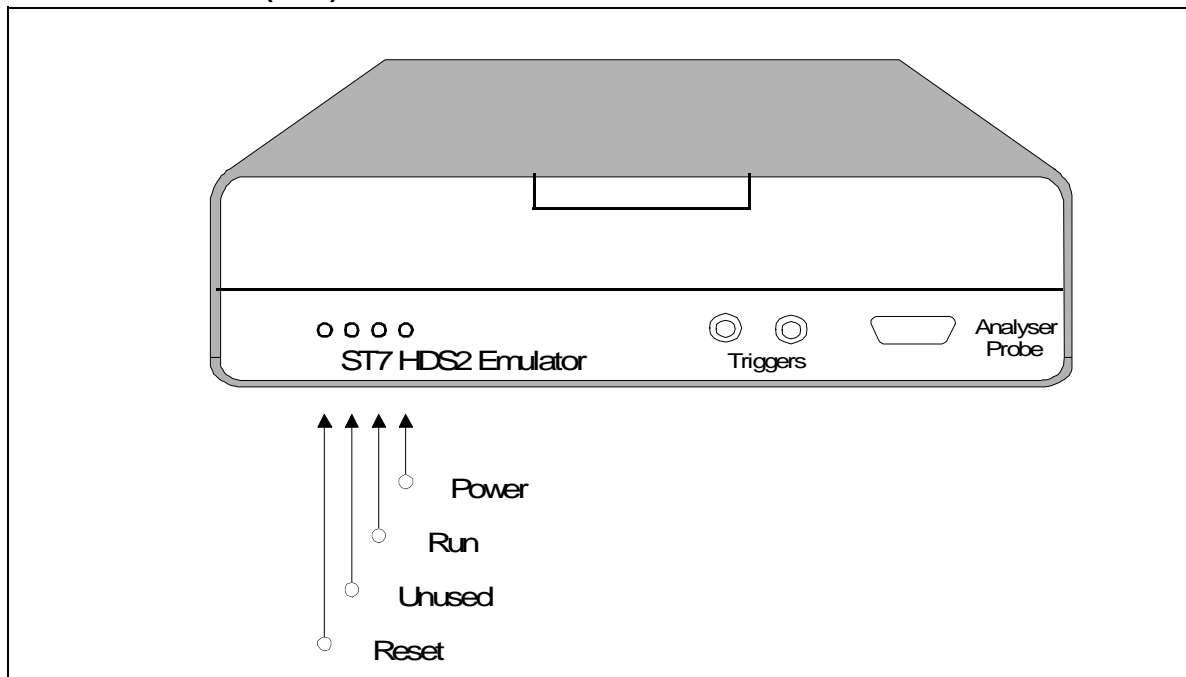
Colors are attributed as follows:

- AL0 is to be taken between the RED (signal) and BROWN (ground) wires.
- AL1 is to be taken between the YELLOW (signal) and ORANGE (ground) wires.
- AL2 is to be taken between the BLUE (signal) and GREEN (ground) wires.
- AL3 is to be taken between the GREY (signal) and PURPLE (ground) wires.

4.6 Front Panel LEDs

Four LEDs on the front panel of the HDS2 box indicate the state of the development tool during emulation:

- **Power (Green)**—indicates that the 5 V power supply is ON.
- **Run (Yellow)**—indicates that the ST7 is running (not in RESET, WFI and HALT mode).
- **System (Red)**—not used with this emulator.
- **Reset (Red)**—not used with this emulator.



4.7 On-Chip Peripherals

You can configure certain on-chip peripherals in ST7 Visual Debug's **MCU Configuration** dialog box (refer to *Section 3.12: Configuring the MCU* on page 38) so that the emulator accurately emulates your target device.

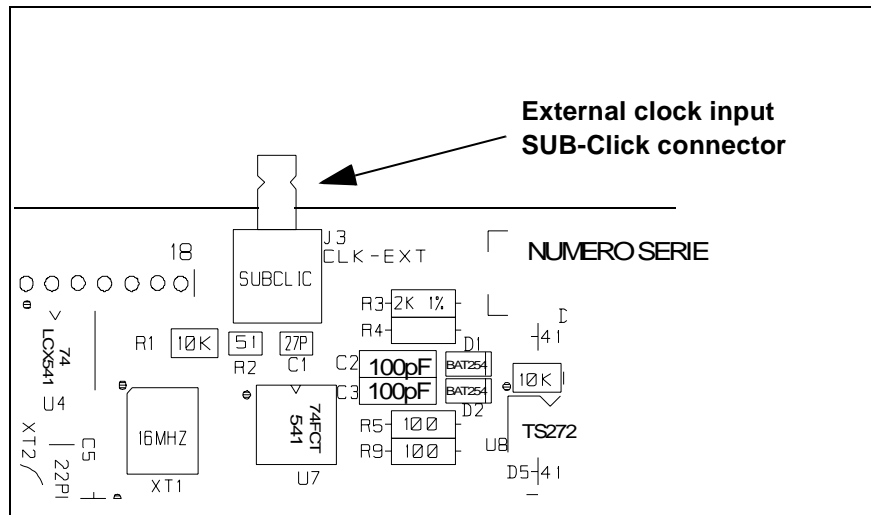
The on-chip peripheral options supported by the emulator are:

4.7.1 CLOCK

The emulator can work with five clock sources (Max. Frequency = 16 Mhz, Min. Frequency = 1 Mhz):

- **16 MHz** internal oscillator.
- **8 MHz** internal oscillator.

- A user-provided **External Clock** input SUB-Click located on the probe as shown below:



However, if additional connectors are needed, you can purchase them at the dealers or manufacturers listed in the section entitled *Hardware spare parts* on page 62. (This list is not exhaustive.)

The following is a list of functional limitations and discrepancies between certain features of the ST7MDT1-EMU2B emulator and its actual target devices:

The application supply follower allows this emulator to run with application V_{DD} from **3 V** to **5.5 V**. If application isn't powered or $V_{DD} < 3$ V, supply is maintained to 3V. If your application is powered by a voltage superior to 5.5 V, the emulator will limit this value internally to 5.5 V.

4.8.2 Low Voltage Detector Management

The typical value of the LVD Hysteresis on the target device is 250 mV while it is around 50 mV on this emulator.

4.8.3 Clock Probe

This clock source is not available on the ST7MDT1-EMU2B emulator.

APPENDIX A: TROUBLESHOOTING

A.1 Identifying the Problem

IF YOU RECEIVE THE FOLLOWING:	THEN...
Error Message (when starting the STVD7 for HDS Emulator): "No message received from emulator."	<p>Ensure that:</p> <ul style="list-style-type: none"> • The parallel cable is connected between the emulator and one of the PC's parallel ports (LPT1 or LPT2). Note that the use of switch boxes between the parallel port connector of your PC and the emulator are not recommended. • The emulator is powered on. • The parallel cable used is the one supplied with the kit by STMicroelectronics. <p>If none of the above items has been overlooked, this may mean that your parallel port connection needs to be reconfigured.</p> <p>Please refer to <i>Section A.2: Changing the Parallel Port Setup on Your PC</i> on page 55.</p>
Error Messages (when starting the STVD7 for HDS Emulator): "Communication error with EMULATOR board." or "SYSTEM ERROR DETECTED by EMULATOR BOARD: RESET CPU."	<p>Ensure that:</p> <ul style="list-style-type: none"> • The flat cables linking the ST7MDT1-Active Probe and the emulator box are properly connected. • The selected configuration file matches the connected ST7MDT1-Active Probe configuration. <p>If it doesn't, from within ST7 Visual Debug, open the MCU Configuration dialog box by selecting Tools>MCU Configuration from the main menu. Choose the correct MCU target device in the dropdown list, then click OK to save your changes to the *.wsp file for your debugging session. Exit STVD7 and power off the emulator. Power on the emulator and restart STVD7 to ensure correct installation.</p>

A.2 Changing the Parallel Port Setup on Your PC

Under certain circumstances, you may receive the following error message:

"Connection Error (LPT1/LPT2): Interconnection failure. Verify your input/output cable."

This may mean that the setup of the LPT1 or LPT2 port on your PC is not compatible with the ST7MDT1-EMU2B emulator.

To set up the port correctly:

- 1 Shut down and restart your PC in order to enter the BIOS setup.
- 2 Follow the messages displayed on the screen and when prompted, press the key required to enter the BIOS setup (usually a function key or the ESC key).
- 3 Select the parallel ports menu. (This may be listed under I/O ports.)
- 4 Change the Mode of the LPT port that you have connected the development board to (i.e. either LPT1 or LPT2) to one of the following compatible modes, according to the following table:

Operating System	Compatible Parallel Port Modes
Windows 95	ECP, EPP, Bidirectional or Centronics
Windows 98	EPP, Bidirectional or Centronics
Windows NT4	ECP, EPP, Bidirectional or Centronics


- 5 Save your changes and exit the BIOS setup.

A.3 Running the Hardware Test

The **Hardware Test** in the STVD7 for HDS2 lets you check that your emulator is correctly connected, configured and working. You can test components of the development board individually, or all at the same time.

If problems occur during debugging (such as bad debugger responses and unexpected behavior), you should check for hardware problems using the Hardware Test function, and if any are detected, contact your STMicroelectronics sales representative (see *Product Support* on page 61).

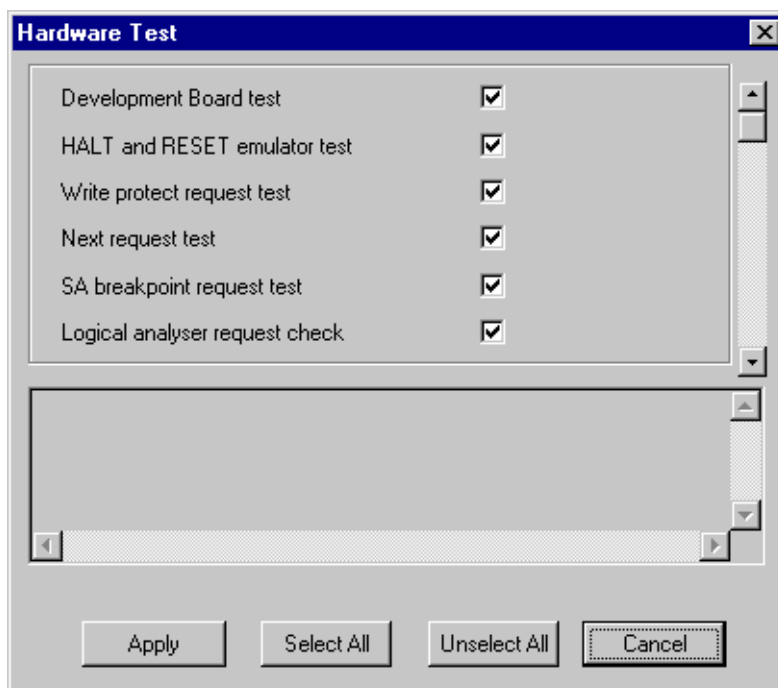
You may open the **Hardware Test** dialog box by:

- selecting, from the Main Menu, **Emulator>Hardware Test**
- clicking on the Hardware Test icon  in the **Emulator** toolbar.

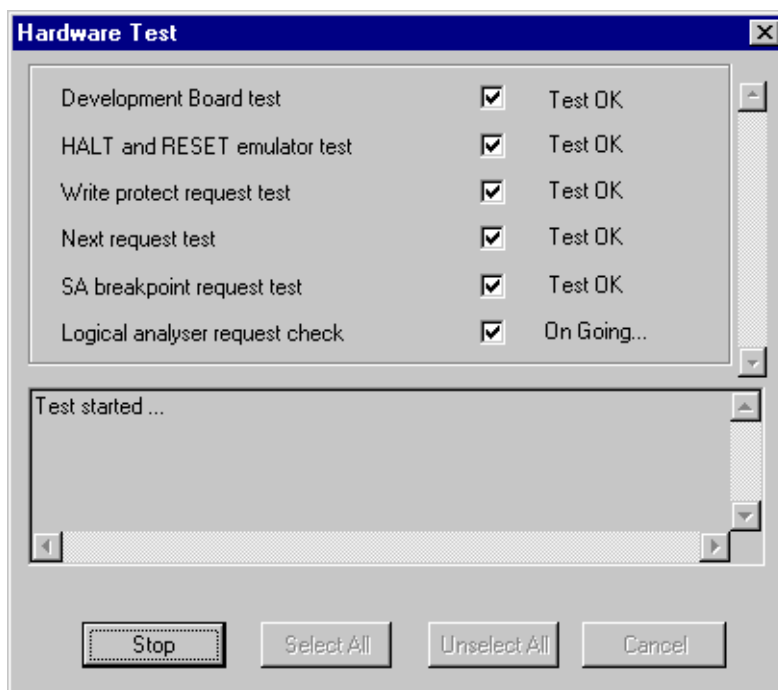
Warning: Be cautious in performing a Hardware Test on the emulator while an application is open. The opened application **WILL BE** corrupted by the hardware testing process. If you find that your application has been corrupted, simply close the application, and reopen it.

The Hardware Test dialog box shows a list of different tests that can be performed on the emulator.

Check the box of each test that you wish to perform (they are all checked by default) and click **Apply** to start the hardware test.



The Hardware tests will be performed one by one, and the results summarized in the dialog box as shown on the right:



APPENDIX B: GLOSSARY

Application Board

This is the printed circuit board onto which you wish to connect the target ST7 MCU. It should include a socket or footprint so that you can connect the application board to your emulator or development kit using the probe and the appropriate device adapter. This allows you to emulate the behavior of the ST7 MCU in a real application in order to debug your application program.

Device Adapter

Device adapters are included in your emulator kit to allow you to connect the emulator to your application board. The type of device adapter depends on the target device's packaging. Many MCUs come in more than one different package, and you should therefore use the device adapter that corresponds to the type of package you have chosen for your application.

DIL

Dual In Line. Designates a type of device package with two rows of pins for thru-hole mounting. Sometimes also called DIP (Dual In-line Package).

ECP

Extended capabilities port communication standard.

EPP

Enhanced parallel port communication standard.

Footprint

Designates the dimensions of the location of a component on a printed circuit board or in a socket. It depends on the number of pins, their size, type and positioning. The footprint of each ST7 device is specified in the datasheet in the section titled *Package Mechanical Data*.

MCU

Microcontroller Unit. Otherwise referred to as the “target device” throughout this manual. This is the core product (or family of products) for which the Development Kit is designed to act as an emulator and programming tool. In general terms, an MCU is a complete computer system, including a CPU, memory, a clock oscillator and I/O on a single integrated circuit.

ST7MDT1-Active Probe

A printed card having connector pins that allow you to connect the Emulator to the MCU socket of the user application board. Using the active probe allows the HDS2 emulator to function as if it were the target device embedded in your application. The probe is connected to the emulator by two flat cables.

PC (Program Counter)

The program counter is the CPU register that holds the address of the next instruction or operand that the CPU will use.

RC network

Resistor-capacitor network.

SDIP

Serial Dual In-line Package.

SO

Small outline. Designates a type of device package with two rows of pins for SMD or socket mounting.

ST7 Visual Debug (STVD7)

A graphic debugger software package that allows you to debug applications destined for the ST7 family of MCUs, either using a built-in simulator function, a Development Kit or an HDS2 Emulator.

Target Device

This is the ST7 device that you wish to use in your application, and which the development kit will emulate for you.

User Application Board

Designates your application board.

PRODUCT SUPPORT

If you experience any problems with this product or if you need spare parts or repair, contact the distributor or ST sales office where you purchased the product:

Getting prepared before you call

Collect the following information about the product before contacting ST or your distributor:

- 1 Name of the company where you purchased the emulator kit.
- 2 Date of purchase.
- 3 Order Code: Refer to the side of your emulator kit box. The order code will depend on the region for which it was ordered (i.e. the UK, Continental Europe or the USA).
- 4 Serial Number: The serial number is located on the rear panel of the emulator box.
- 5 Target Device: The sales type of the ST7 microcontroller you are using in your development.

Contact List

*Note: For **American and Canadian customers** seeking technical support the US/Canada is split in 3 territories. According to your area, contact the following sales office and ask to be transferred to an 8-bit microcontroller Field Applications Engineer (FAE).*

Canada and East Coast

STMicroelectronics
Lexington Corporate Center
10 Maguire Road, Building 1, 3rd floor
Lexington, MA 02421
Phone: 781-402-2650

Mid West

STMicroelectronics
1300 East Woodfield Road, Suite 410
Schaumburg, IL 60173
Phone: 847-517-1890

West coast

STMicroelectronics, Inc.
30101 Agoura Court
Suite 118
Agoura Hills, CA 91301
Phone: 818-865-6850

Europe

France (33-1) 47407575
Germany (49-89) 460060
U.K. (44-1628) 890800

Asia/Pacific Region

Japan (81-3) 3280-4120
Hong-Kong (852) 2861 5700
Sydney (61-2) 9580 3811
Taipei (886-2) 2378-8088

Software updates

You can get software updates from the ST Internet web site <http://mcu.st.com>. For information on firmware and hardware revisions, call your distributor or ST using the contact list given above.

Hardware spare parts

Most of the hardware you will require is included in the emulator kit. However, some special applications may require additional parts, such as connecting an external clock.

Below is a list of manufacturers and dealers of SMB and BNC connectors that can be used with our product.

European manufacturers:

Manufacturer: Radiall
Dealer: Radialex
Phone: (+33) - 4 - 72 - 35 - 31 - 72.

The EXTERNAL clock male connector on the emulation probe has the following commercial reference:

- In SMB range: Number 114665.

Adaptable Female connectors to this connector are:

- SMB upright range
Number114005 for cable 2,6.
Number114003 for cable 4,2.
Number114009 for cable 3,8.
- SMB kneed range
Number114165 for cable 2,6.
Number114163 for cable 4,2.
- SMB to BNC range
Number191214. Adapter SMB female / BNC male.
Number191215. Adapter SMB female/ BNC female.

USA manufacturers:

Manufacturer: R-Tek
411 Quentin Road
Palatine, IL 60067
Phone: (847) 934-7900
Fax: (847) 934-7946

Adaptable female connectors parts numbers:

- CCAX00168-2: cable length 2 ft, with SMB plug to BNC plug.
- CCAX00168-3: cable length 3 ft, with SMB plug to BNC plug.

Index

A

Active Probe	
architecture	47
hardware	47
analyser probe signals	51

C

clock	
selecting frequency	52
selecting source	52
Clock Probe	54
configuration	
analyser probe input signals	51
output triggers	49
connections	
emulator power supply	18
emulator to PC	13
SDIP32 probes	18

D

documentation	8
---------------------	---

E

ECP	
definition of	59
EMC compliance	14
emulator kit	
configuration of	6
delivery checklist	11
functional limitations/discrepancies	53
installing software for	21
main functions of	5
operation of	7
software and documentation for	8

F

ferrites	
attaching to cables	14

H

hardware	
----------	--

installation	12
hardware test	56
HDS2 emulators	
main features	45

I

input signals	51
installation	
hardware	12
STVD7	21

L

LEDs	52
load	
binary files	32
low voltage detection	
emulation of	54

M

MB176	11
MCU	
emulated	5
on-chip peripherals	52
MCU configuration	38
MCU memory	
configuring	40
types	40

O

on-chip peripherals	52
output triggers	49

P

parallel port	
troubleshooting connection problems	55
passive probe	
definition of	60
PC	
system requirements	11
peripherals	
configuring target	39
power supply limitations	53
project settings	

Index

modifying..... 33

R

RAM

 minimum 11

ROM size 40

S

software

 updates 62

ST7MDT1 EMU2B

 architecture 45

 specific features of 45

ST7MDT1-Active Probe

 main features 45

STVD7

 about 23

 build context..... 37

 contexts..... 37

 creating a workspace 28

 debug mode 37

 installing 21

 main features 23

 MCU configuration 38

 opening binary files 32

 opening workspaces 30

 supported application files 25

supported toolchains25

switching between contexts.....38

toolchain paths22

workspaces.....24

support

 contact numbers for61

 for development kit61

 information required.....61

 web support.....9

T

target device

 definition of60

 supported.....5

troubleshooting55

 connection error.....55

U

user application board

 definition of60

W

workspaces

 creating new28

 saving35

Information furnished is believed to be accurate and reliable. However, STMicroelectronics assumes no responsibility for the consequences of use of such information nor for any infringement of patents or other rights of third parties which may result from its use. No license is granted by implication or otherwise under any patent or patent rights of STMicroelectronics. Specifications mentioned in this publication are subject to change without notice. This publication supersedes and replaces all information previously supplied. STMicroelectronics products are not authorized for use as critical components in life support devices or systems without the express written approval of STMicroelectronics.

The ST logo is a registered trademark of STMicroelectronics.

Intel® is a U.S. registered trademark of Intel Corporation.

Microsoft®, Windows® and Windows NT® are U.S. registered trademarks of Microsoft Corporation.

©2000 STMicroelectronics - All Rights Reserved.

Purchase of I²C Components by STMicroelectronics conveys a license under the Philips I²C Patent. Rights to use these components in an I²C system is granted provided that the system conforms to the I²C Standard Specification as defined by Philips.

STMicroelectronics Group of Companies

Australia - Brazil - China - Finland - France - Germany - Hong Kong - India - Italy - Japan - Malaysia - Malta - Morocco - Singapore - Spain
Sweden - Switzerland - United Kingdom - U.S.A.