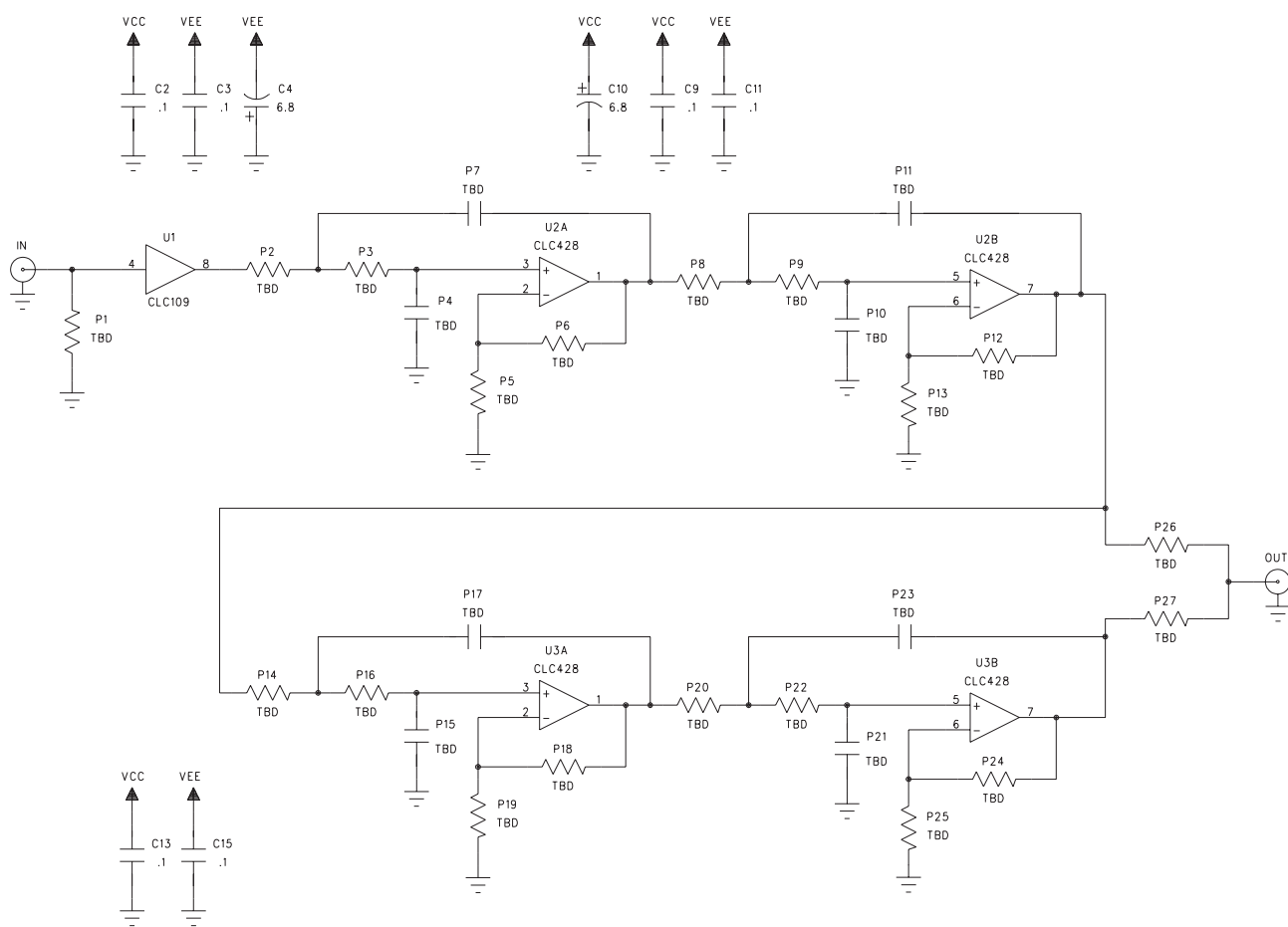
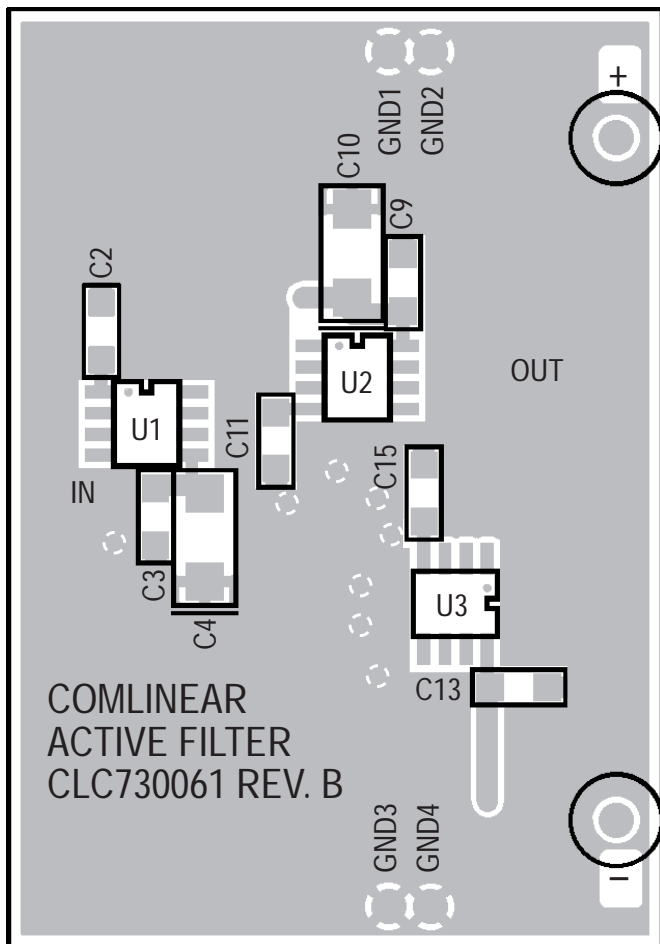


## Evaluation Board

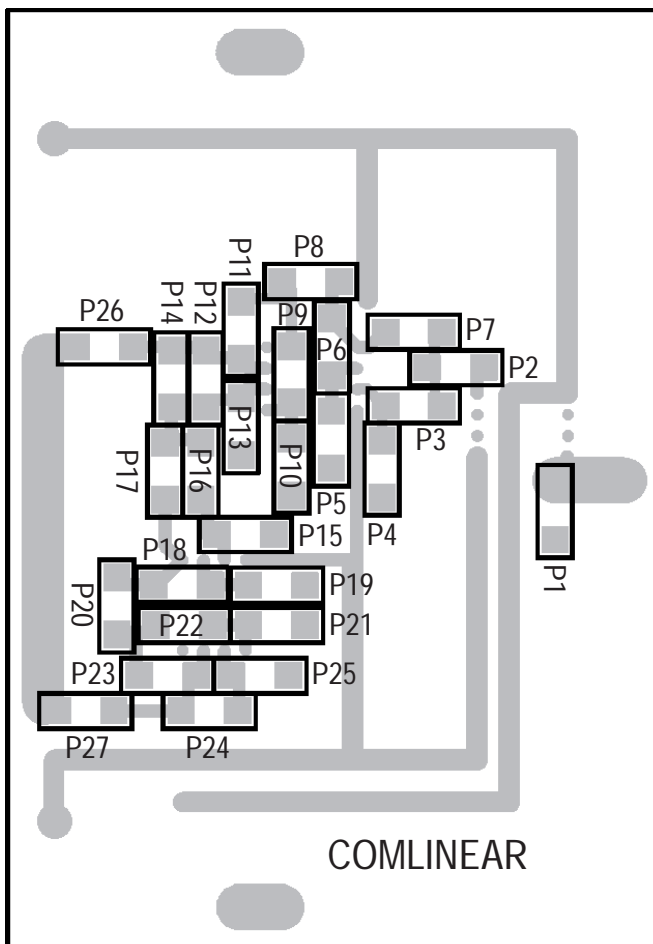
To make prototyping active filters easier, Comlinear has designed two different active filter evaluation boards. A schematic of the first board is shown below. It consists of a CLC109 input buffer, followed by four cascaded Sallen Key filter sections, realized with two dual Op-amps. The board was designed using surface mount components, so the resistors and capacitors are interchangeable. This board is available in a sample kit from National Semiconductor as Lit #665504-001. The other board also allows for up to four cascaded biquad sections but restricts the user to designs using  $K = 1$  since rather than Op-amps, this board uses a quad, unity gain buffer. The board can be ordered as part number CLC730023 and is fully documented in the CLC114 evaluation board datasheet, available as National Semiconductor Lit #150114-003 or in the 1997 Comlinear Databook.



730061 Active Filter Evaluation Board Schematic



730061 Layer1 Silk



730061 Layer2 Silk

## Customer Design Applications Support

National Semiconductor is committed to design excellence. For sales, literature and technical support, call the National Semiconductor Customer Response Group at **1-800-272-9959** or fax **1-800-737-7018**.

## Life Support Policy

National's products are not authorized for use as critical components in life support devices or systems without the express written approval of the president of National Semiconductor Corporation. As used herein:

1. Life support devices or systems are devices or systems which, a) are intended for surgical implant into the body, or b) support or sustain life, and whose failure to perform, when properly used in accordance with instructions for use provided in the labeling, can be reasonably expected to result in a significant injury to the user.
2. A critical component is any component of a life support device or system whose failure to perform can be reasonably expected to cause the failure of the life support device or system, or to affect its safety or effectiveness.



**National Semiconductor Corporation**  
1111 West Bardin Road  
Arlington, TX 76017  
Tel: 1(800) 272-9959  
Fax: 1(800) 737-7018

**National Semiconductor Europe**  
Fax: (+49) 0-180-530 85 86  
E-mail: europe.support.nsc.com  
Deutsch Tel: (+49) 0-180-530 85 85  
English Tel: (+49) 0-180-532 78 32  
Francais Tel: (+49) 0-180-532 93 58  
Italiano Tel: (+49) 0-180-534 16 80

**National Semiconductor Hong Kong Ltd.**  
13th Floor, Straight Block  
Ocean Centre, 5 Canton Road  
Tsimshatsui, Kowloon  
Hong Kong  
Tel: (852) 2737-1600  
Fax: (852) 2736-9960

**National Semiconductor Japan Ltd.**  
Tel: 81-043-299-2309  
Fax: 81-043-299-2408

National does not assume any responsibility for use of any circuitry described, no circuit patent licenses are implied and National reserves the right at any time without notice to change said circuitry and specifications.