

DS9622 Dual Line Receiver

General Description

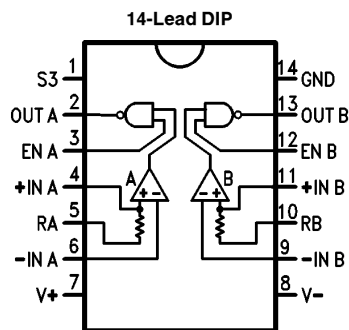
The DS9622 is a dual line receiver designed to discriminate a worst case logic swing of 2V from a $\pm 10V$ common mode noise signal or ground shift. A 1.5V threshold is built into the differential amplifier to offer a TTL compatible threshold voltage and maximum noise immunity. The offset is obtained by use of current sources and matched resistors.

The DS9622 allows the choice of output states with the input open, without affecting circuit performance by use of S3. A 130 Ω terminating resistor is provided at the input of each line receiver. An enable is also provided for each line receiver. The output is TTL compatible. The output high level can be increased to 12V by tying it to a positive supply through a resistor. The output circuits allow wired-OR operation.

Features

- TTL compatible threshold voltage
- Input terminating resistors
- Choice of output state with inputs open
- TTL compatible output
- High common mode
- Wired-OR capability
- Enable inputs
- Logic compatible supply voltages

Connection Diagram



TL/F/9760-2

Top View

For Complete Military 883 Specifications, see RETS Datasheet.
Order Number DS9622ME/883,
DS9622MJ/883 or DS9622MW/883
See NS Package Number E20A, J14A or W14B

Absolute Maximum Ratings (Note 1)

If Military/Aerospace specified devices are required, please contact the National Semiconductor Sales Office/Distributors for availability and specifications.

Storage Temperature Range	−65°C to +175°C
Operating Temperature Range	−55°C to +125°C
Lead Temperature (Soldering, 60 sec.)	300°C
Internal Power Dissipation (Note 5)	400 mW
V ⁺ to GND	−0.5V to +7.0V
Input Voltage	±15V

Voltage Applied to Outputs
for Output High State

−0.5V to +13.2V

V[−] to GND

−0.5V to −12V

Enable to GND

−0.5V to +15V

Operating Conditions

	Min	Max	Units
Supply Voltage, V _{CC}	4.5	5.5	V
Temperature, T _A	−55	+125	°C

Electrical Characteristics (Notes 2, 3)

Symbol	Parameter	Conditions	Min	Max	Units
V _{OL}	Output Voltage LOW	V ⁺ = S3 = 4.5V, V [−] = −11V, V _{DIFF} = 2.0V, I _{OL} = 12.4 mA, EN = Open		0.4	V
V _{OH}	Output Voltage HIGH	V ⁺ = 4.5V, V [−] = −9.0V, S3 = 0V, V _{DIFF} = 1.0V, I _{OH} = −0.2 mA, EN = Open	2.8		V
I _{CEX}	Output Leakage Current	V ⁺ = 4.5V, V [−] = −11V, S3 = 0V, V _{DIFF} = 1.0V, V _O = 12V, EN = Open		200	μA
I _{OS}	Output Short Circuit Current (Note 4)	V ⁺ = 5.0V, V [−] = −10V, V _{DIFF} = 1.0V, V _O = S3 = 0V, EN = Open	−3.1	−1.4	mA
I _{R(EN)}	Enable Input Leakage Current	V ⁺ = S3 = 4.5V, V [−] = −11V, I _N = Open, EN = 4.0V		5.0	μA
I _{F(EN)}	Enable Input Forward Current	V ⁺ = 5.5V, V [−] = −9.0V V _I = Open, EN = S3 = 0V	−1.5		mA
I _{F(+IN)}	+ Input Forward Current	V ⁺ = 5.0V, V [−] = −10V, V _{I+} = 0V, V _{I−} = GND, EN = S3 = Open	−2.3		mA
I _{F(−IN)}	− Input Forward Current	V ⁺ = S3 = 5.0V, V [−] = −10V, V _{I+} = GND, V _{I−} = 0V, EN = Open	−2.6		mA
V _{IL(EN)}	Input Voltage LOW	4.5V ≤ V ⁺ ≤ 5.5V, −11V ≤ V [−] ≤ −9.0V, EN = Open	+25°C	1.0	V
			+125°C	0.7	V
			−55°C	1.3	V
V _{TH}	Differential Input Threshold Voltage	4.5V ≤ V ⁺ ≤ 5.5V, −11V ≤ V [−] ≤ −9.0V, EN = Open	1.0	2.0	V
V _{CM}	Common Mode Voltage	V ⁺ = 5.0V, V [−] = −10V, 1.0V ≤ V _{DIFF} ≤ 2.0V	−10	+10	V
R _T	Terminating Resistance	25°C	91	215	Ω
I ⁺	Positive Supply Current	V ⁺ = S3 = V _{I+} = 5.5V, V [−] = 11V, V _{I−} = 0V	25°C	22.9	mA
I [−]	Negative Supply Current		−11.1		mA

SWITCHING CHARACTERISTICS T_A = 25°C

t _{PLH}	Propagation Delay to High Level	V ⁺ = 5.0V, V [−] = −10V, 0V ≤ V _I ≤ 3.0V, C _L = 30 pF (See Figure 1)	R _L = 3.9 kΩ		50	ns
t _{PHL}	Propagation Delay to Low Level		R _L = 390Ω		50	ns

Note 1: "Absolute Maximum Ratings" are those values beyond which the safety of the device cannot be guaranteed. They are not meant to imply that the devices should be operated at these limits. The tables of "Electrical Characteristics" provide conditions for actual device operation.

Note 2: Unless otherwise specified Min/Max limits apply across the −55°C to +125°C temperature range. All typicals are given for V_{CC} = 5V and T_A = 25°C.

Note 3: All currents into device pins are positive; all currents out of device pins are negative. All voltages are referenced to ground unless otherwise specified.

Note 4: Only one output at a time should be shorted.

Note 5: Rating applies to ambient temperatures up to +125°C. Above 125°C ambient, derate linearly at 120°C/W.

Switching Time Test Circuit and Waveforms

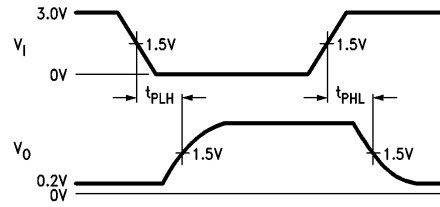
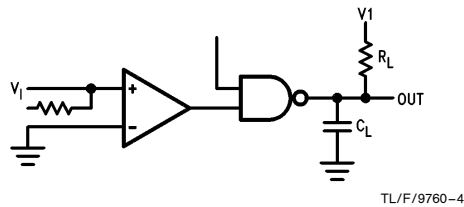
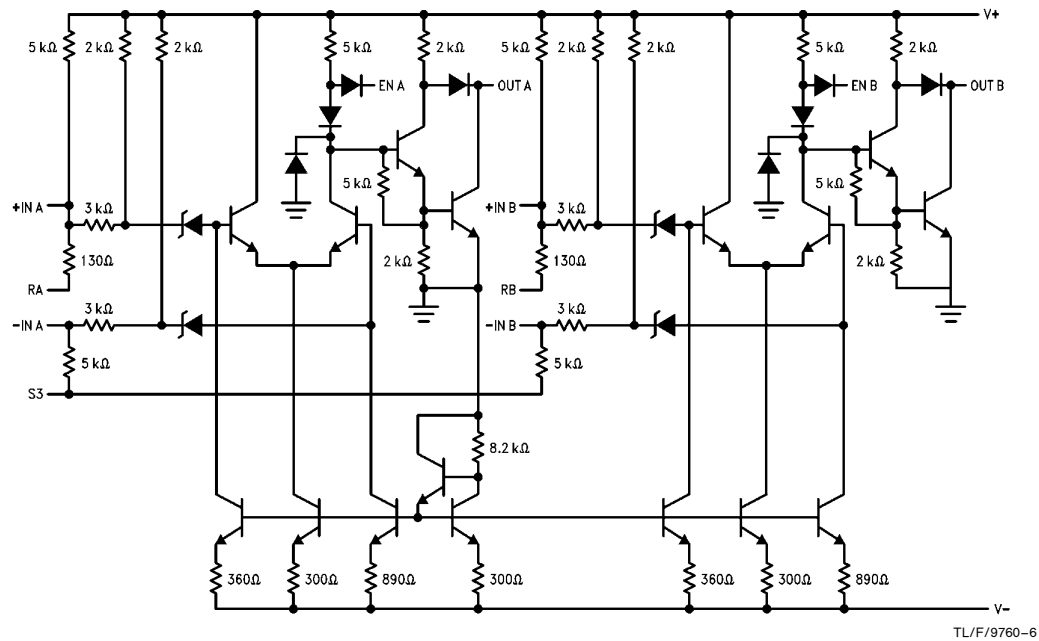


FIGURE 1

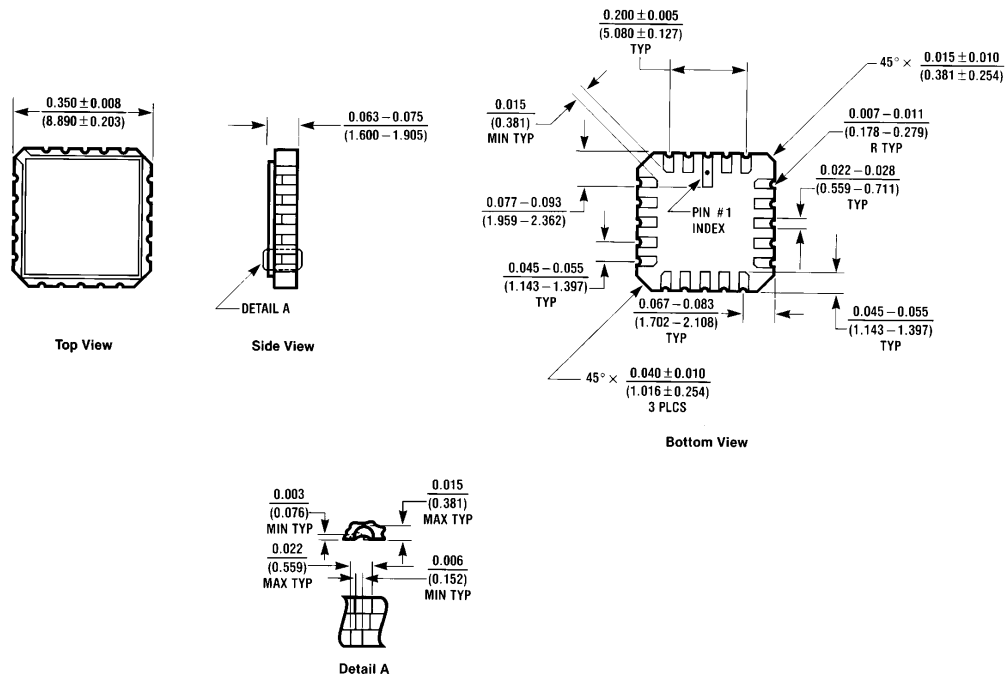
Equivalent Circuit



Typical Applications

When S3 is connected to V_- , open inputs cause output to be high. When $V_+ = 5V$, $V_- = -10V$ and S3 is connected to ground, open inputs cause output to be low.

Physical Dimensions inches (millimeters)



Ceramic Leadless Chip Carrier (LCC)
Order Number DS9622ME/883
NS Package Number E20A

E20A (REV D)

Physical Dimensions inches (millimeters) (Continued)

The diagram illustrates the physical dimensions of the J14A Ceramic Dual-In-Line Package (J) in inches and millimeters. The package is shown from three perspectives: top, side, and end view.

Top View Dimensions:

- Overall width: 0.785 (19.939) MAX
- Pin pitch (between pins 1 and 2): 0.025 (0.635) RAD
- Pin 1 location: 0.220-0.310 (5.588-7.874)
- Pin 14 location: 0.220-0.310 (5.588-7.874)

Side View Dimensions:

- Overall height: 0.180 (4.572) MAX
- Lead angle: 95° ± 5°
- Lead thickness: 0.010-0.012 (0.203-0.305)
- Lead width: 0.008-0.012 (0.203-0.305)
- Lead length: 0.098 (2.489) MAX BOTH ENDS

End View Dimensions:

- Overall length: 0.290-0.320 (7.366-8.128)
- Pin pitch (between pins 1 and 2): 0.060 ± 0.005 (1.524 ± 0.127)
- Pin 1 location: 0.060 ± 0.005 (1.524 ± 0.127)
- Pin 14 location: 0.060 ± 0.005 (1.524 ± 0.127)
- Pin 1 width: 0.018 ± 0.003 (0.457 ± 0.076)
- Pin 14 width: 0.018 ± 0.003 (0.457 ± 0.076)
- Pin 1 length: 0.100 ± 0.010 (2.540 ± 0.254)
- Pin 14 length: 0.100 ± 0.010 (2.540 ± 0.254)
- Pin 1 height: 0.125-0.200 (3.175-5.080)
- Pin 14 height: 0.125-0.200 (3.175-5.080)
- Pin 1 thickness: 0.020-0.060 (0.508-1.524)
- Pin 14 thickness: 0.020-0.060 (0.508-1.524)
- Pin 1 width: 0.018 ± 0.003 (0.457 ± 0.076)
- Pin 14 width: 0.018 ± 0.003 (0.457 ± 0.076)
- Pin 1 length: 0.100 ± 0.010 (2.540 ± 0.254)
- Pin 14 length: 0.100 ± 0.010 (2.540 ± 0.254)
- Pin 1 height: 0.125-0.200 (3.175-5.080)
- Pin 14 height: 0.125-0.200 (3.175-5.080)
- Pin 1 thickness: 0.020-0.060 (0.508-1.524)
- Pin 14 thickness: 0.020-0.060 (0.508-1.524)

Other Dimensions:

- Pin 1 width: 0.005 (0.127) MIN
- Pin 14 width: 0.005 (0.127) MIN
- Pin 1 length: 0.005 (0.127) MIN
- Pin 14 length: 0.005 (0.127) MIN
- Pin 1 height: 0.005 (0.127) MIN
- Pin 14 height: 0.005 (0.127) MIN
- Pin 1 thickness: 0.005 (0.127) MIN
- Pin 14 thickness: 0.005 (0.127) MIN

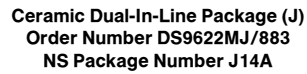
Material and Finish:

- GLASS SEALANT
- 86°-94° TYP

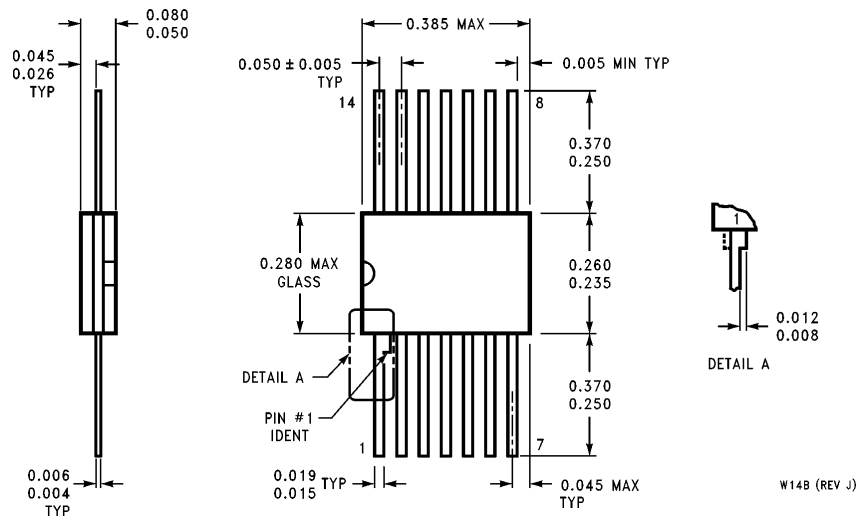
Package Identification:

- Ceramic Dual-In-Line Package (J)
- Order Number DS9622MJ/883
- NS Package Number J14A

Revision: J14A (REV G)



Physical Dimensions inches (millimeters) (Continued)



Lead Cerpack (W)
Order Number DS9622MW/883
NS Package Number W14B

LIFE SUPPORT POLICY

NATIONAL'S PRODUCTS ARE NOT AUTHORIZED FOR USE AS CRITICAL COMPONENTS IN LIFE SUPPORT DEVICES OR SYSTEMS WITHOUT THE EXPRESS WRITTEN APPROVAL OF THE PRESIDENT OF NATIONAL SEMICONDUCTOR CORPORATION. As used herein:

1. Life support devices or systems are devices or systems which, (a) are intended for surgical implant into the body, or (b) support or sustain life, and whose failure to perform, when properly used in accordance with instructions for use provided in the labeling, can be reasonably expected to result in a significant injury to the user.
2. A critical component is any component of a life support device or system whose failure to perform can be reasonably expected to cause the failure of the life support device or system, or to affect its safety or effectiveness.



National Semiconductor Corporation
 1111 West Bardin Road
 Arlington, TX 76017
 Tel: 1(800) 272-9959
 Fax: 1(800) 737-7018

<http://www.national.com>

National Semiconductor Europe

Fax: +49 (0) 180-530 85 86
 Email: europe.support@nsc.com
 Deutsch Tel: +49 (0) 180-530 85 85
 English Tel: +49 (0) 180-532 78 32
 Français Tel: +49 (0) 180-532 93 58
 Italiano Tel: +49 (0) 180-534 16 80

National Semiconductor Hong Kong Ltd.

19th Floor, Straight Block,
 Ocean Centre, 5 Canton Rd.
 Tsimshatsui, Kowloon
 Hong Kong
 Tel: (852) 2737-1600
 Fax: (852) 2736-9960

National Semiconductor Japan Ltd.

Tel: 81-043-299-2308
 Fax: 81-043-299-2408