

## DS7830/DS8830 Dual Differential Line Driver

### General Description

The DS7830/DS8830 is a dual differential line driver that also performs the dual four-input NAND or dual four-input AND function.

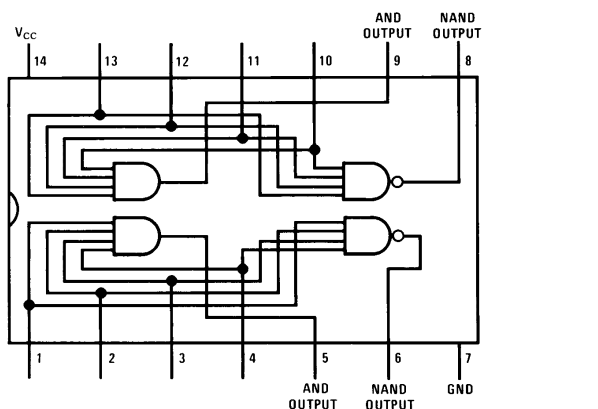
TTL (Transistor-Transistor-Logic) multiple emitter inputs allow this line driver to interface with standard TTL systems. The differential outputs are balanced and are designed to drive long lengths of coaxial cable, strip line, or twisted pair transmission lines with characteristic impedances of  $50\Omega$  to  $500\Omega$ . The differential feature of the output eliminates troublesome ground-loop errors normally associated with single-wire transmissions.

### Features

- Single 5V power supply
- Diode protected outputs for termination of positive and negative voltage transients
- Diode protected inputs to prevent line ringing
- High speed
- Short circuit protection

### Connection Diagram

Dual-In-Line and Flat Package



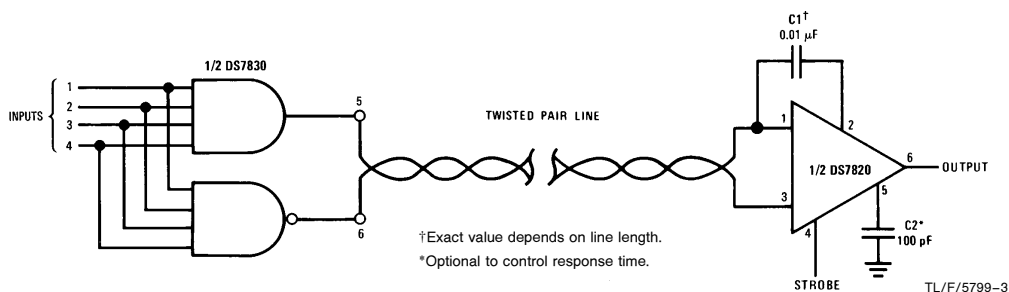
Top View

Order Number DS8830N  
See NS Package Number N14A

For Complete Military 883 Specifications, See RETS Data Sheet.  
Order Number DS7830J/883 or DS7830W/883  
See NS Package Number J14A

### Typical Application

Digital Data Transmission



**Absolute Maximum Ratings** (Note 1)

If Military/Aerospace specified devices are required, please contact the National Semiconductor Sales Office/Distributors for availability and specifications.

$V_{CC}$	7.0V
Input Voltage	5.5V
Storage Temperature	−65°C to +150°C
Lead Temperature (Soldering, 4 sec.)	260°C
Output Short Circuit Duration (125°C)	1 second
Maximum Power Dissipation* at 25°C	
Cavity Package	1308 mW
Molded Package	1207 mW

\*Derate cavity package 8.7 mW/°C above 25°C; derate molded package 9.7 mW/°C above 25°C.

**Operating Conditions**

	Min	Max	Units
Supply Voltage ( $V_{CC}$ )			
DS8730	4.5	5.5	V
DS8830	4.75	5.25	V
Temperature ( $T_A$ )			
DS7830	−55	+125	°C
DS8830	0	+70	°C

**Electrical Characteristics** (Notes 2 and 3)

Symbol	Parameter	Conditions	Min	Typ	Max	Units
$V_{IH}$	Logical "1" Input Voltage		2.0			V
$V_{IL}$	Logical "0" Input Voltage				0.8	V
$V_{OH}$	Logical "1" Output Voltage	$V_{IN} = 0.8V$	$I_{OUT} = -0.8\text{ mA}$	2.4		V
			$I_{OUT} = 40\text{ mA}$	1.8	3.3	V
$V_{OL}$	Logical "0" Output Voltage	$V_{IN} = 2.0V$	$I_{OUT} = 32\text{ mA}$		0.2	V
			$I_{OUT} = 40\text{ mA}$		0.22	V
$I_{IH}$	Logical "1" Input Current	$V_{IN} = 2.4V$			120	$\mu\text{A}$
		$V_{IN} = 5.5V$			2	mA
$I_{IL}$	Logical "0" Input Current	$V_{IN} = 0.4V$			−4.8	mA
$I_{SC}$	Output Short Circuit Current	$V_{CC} = 5.0V$ , $T_A = 125^\circ\text{C}$ , (Note 4)	−40	−100	−120	mA
$I_{CC}$	Supply Current	$V_{IN} = 5.0V$ , (Each Driver)		11	18	mA
$V_I$	Input Clamp	$V_{CC} = \text{Min}$ , $I_{IN} = -12\text{ mA}$		−1.0	−1.5	V

**Switching Characteristics**  $T_A = 25^\circ\text{C}$ ,  $V_{CC} = 5V$ , unless otherwise noted

Symbol	Parameter	Conditions	Min	Typ	Max	Units
$t_{pd1}$	Propagation Delay AND Gate	$R_L = 400\Omega$ , $C_L = 15\text{ pF}$ (Figure 1)		8	12	ns
$t_{pd0}$				11	18	ns
$t_{pd1}$	Propagation Delay NAND Gate	$R_L = 400\Omega$ , $C_L = 15\text{ pF}$ (Figure 1)		8	12	ns
$t_{pd0}$				5	8	ns
$t_1$	Differential Delay	Load, 100 $\Omega$ and 5000 pF, (Figure 2)		12	16	ns
$t_2$	Differential Delay	Load, 100 $\Omega$ and 5000 pF, (Figure 2)		12	16	ns

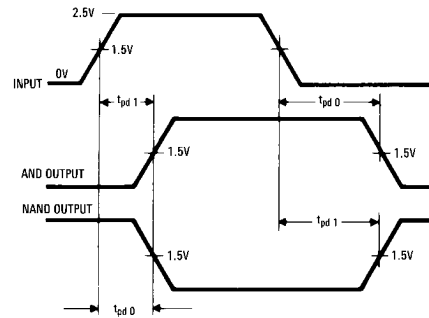
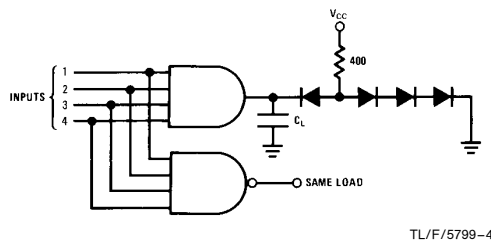
**Note 1:** "Absolute Maximum Ratings" are those values beyond which the safety of the device cannot be guaranteed. Except for "Operating Temperature Range" they are not meant to imply that the devices should be operated at these limits. The table of "Electrical Characteristics" provides conditions for actual device operation.

**Note 2:** Unless otherwise specified min/max limits apply across the −55°C to +125°C temperature range for the DS7830 and across the 0°C to +70°C range for the DS8830. Typical values for  $T_A = 25^\circ\text{C}$  and  $V_{CC} = 5.0V$ .

**Note 3:** All currents into device pins shown as positive, out of device pins as negative, all voltages referenced to ground unless otherwise noted. All values shown as max or min on absolute value basis.

**Note 4:** Only one output at a time should be shorted.

## AC Test Circuit and Switching Time Waveforms



$f = 1 \text{ MHz}$   
 $t_r = t_f \leq 10 \text{ ns}$  (10% to 90%)  
 Duty cycle = 50%

FIGURE 1

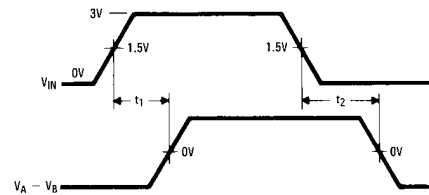
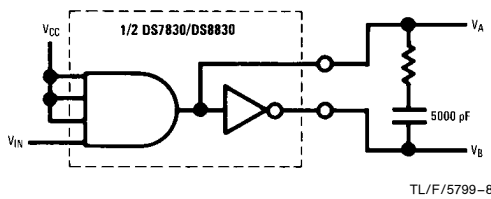
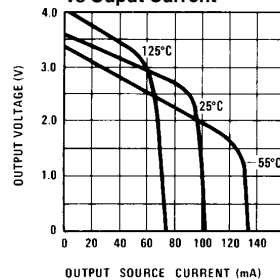


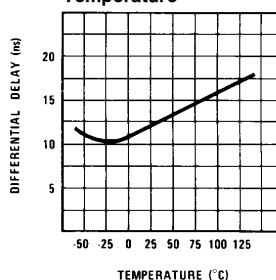
FIGURE 2

## Typical Performance Characteristics

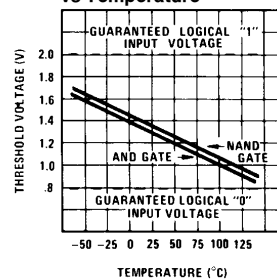
Output High Voltage  
(Logical "1")  
vs Output Current



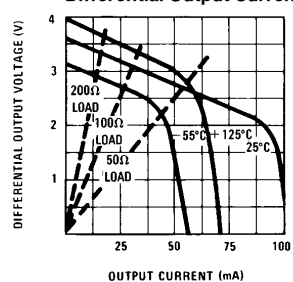
Differential Delay vs  
Temperature



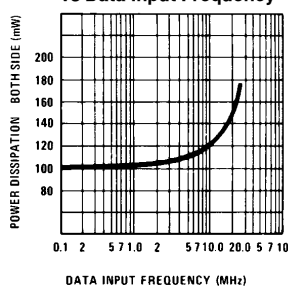
Threshold Voltage  
vs Temperature



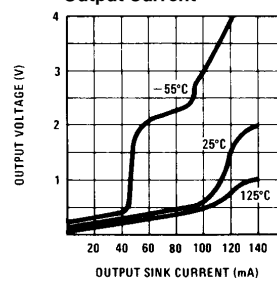
Differential Output Voltage  
( $V_{AND} - V_{NAND}$ ) vs  
Differential Output Current



Power Dissipation (No Load)  
vs Data Input Frequency

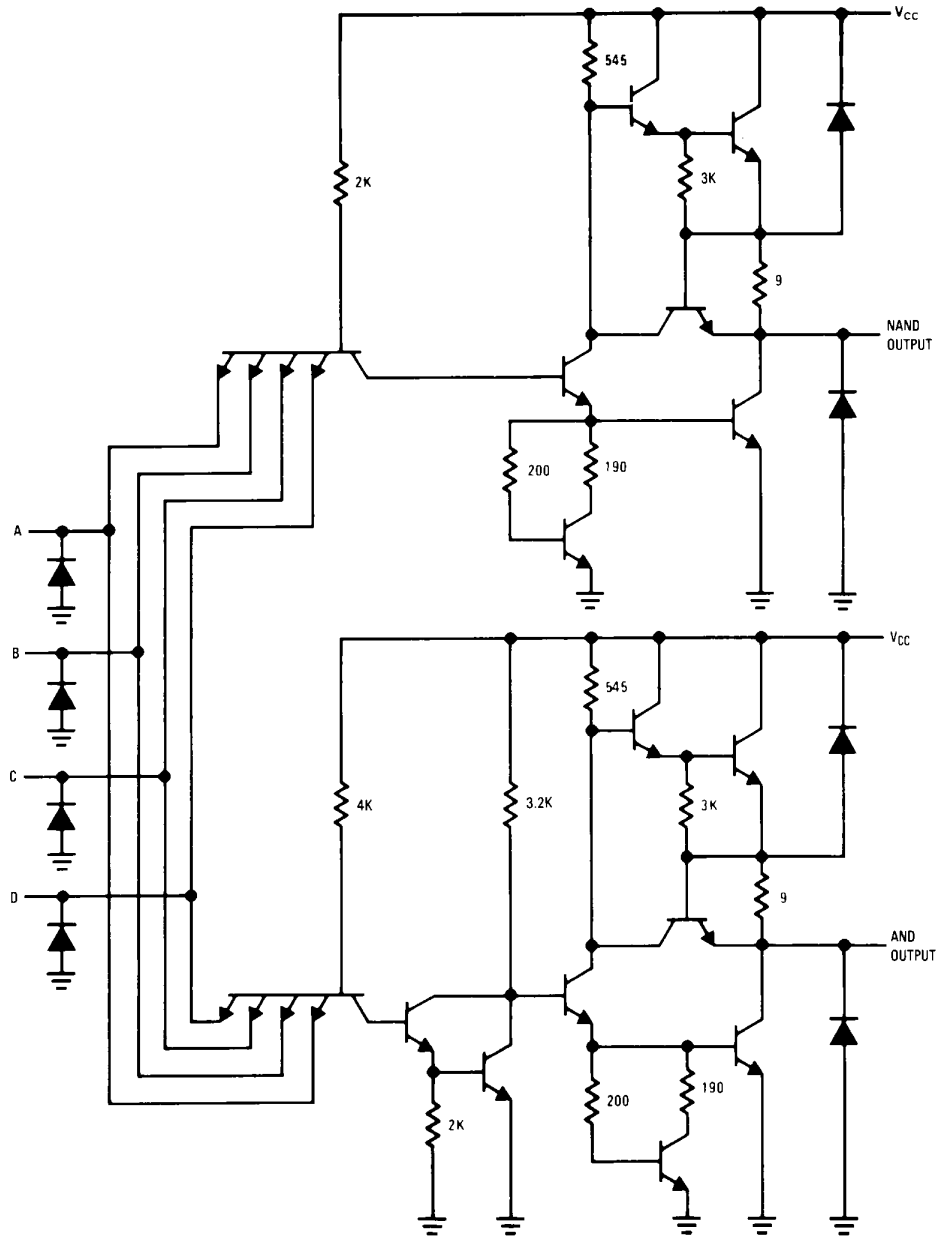


Output Low Voltage  
(Logical "0") vs  
Output Current



TL/F/5799-7

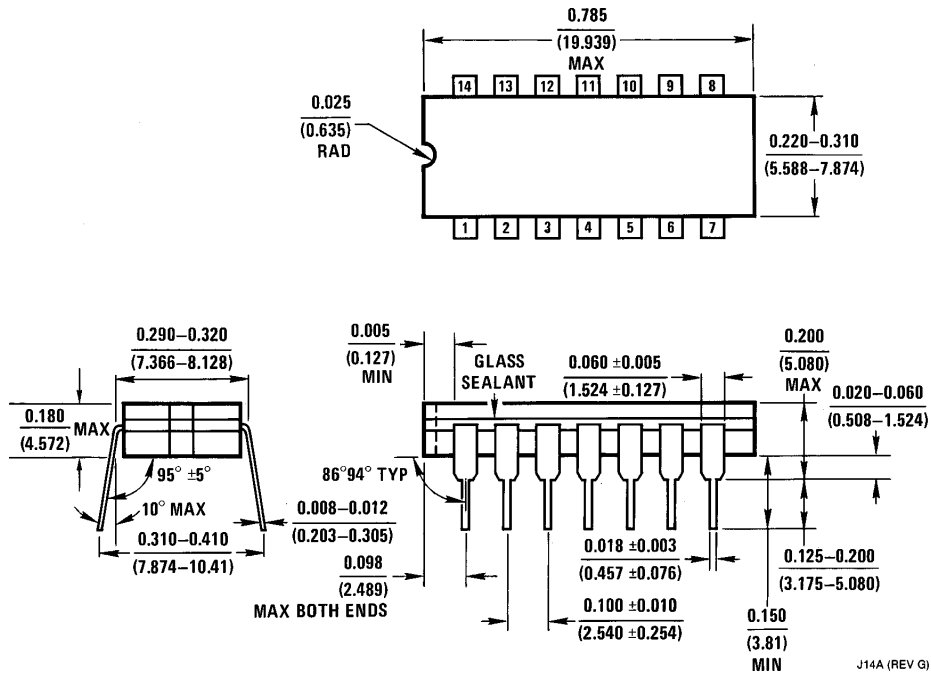
## Schematic Diagram



\*2 Per Package

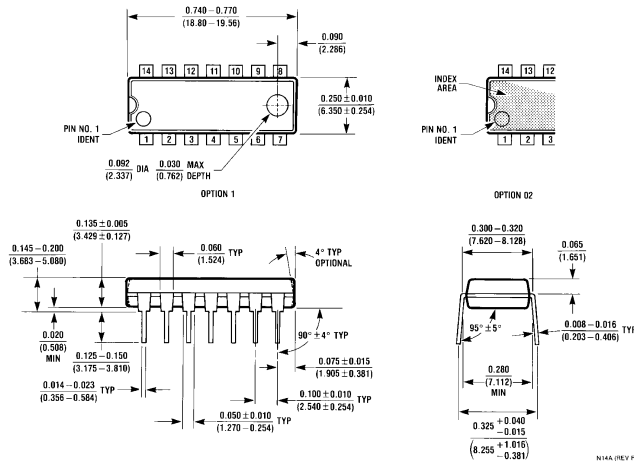
TL/F/5799-1

# Physical Dimensions inches (millimeters)



Ceramic Dual-In-Line Package (J)  
Order Number DS7830J or DS8830J  
NS Package Number J14A

J14A (REV G)

**Physical Dimensions** inches (millimeters) (Continued)

**Molded Dual-In-Line Package (N)**  
**Order Number DS8830N**  
**NS Package Number N14A**

**LIFE SUPPORT POLICY**

NATIONAL'S PRODUCTS ARE NOT AUTHORIZED FOR USE AS CRITICAL COMPONENTS IN LIFE SUPPORT DEVICES OR SYSTEMS WITHOUT THE EXPRESS WRITTEN APPROVAL OF THE PRESIDENT OF NATIONAL SEMICONDUCTOR CORPORATION. As used herein:

1. Life support devices or systems are devices or systems which, (a) are intended for surgical implant into the body, or (b) support or sustain life, and whose failure to perform, when properly used in accordance with instructions for use provided in the labeling, can be reasonably expected to result in a significant injury to the user.
2. A critical component is any component of a life support device or system whose failure to perform can be reasonably expected to cause the failure of the life support device or system, or to affect its safety or effectiveness.



**National Semiconductor Corporation**  
 1111 West Bardin Road  
 Arlington, TX 76017  
 Tel: 1(800) 272-9959  
 Fax: 1(800) 737-7018

<http://www.national.com>

**National Semiconductor Europe**

Fax: +49 (0) 180-530 85 86  
 Email: [europe.support@nsc.com](mailto:europe.support@nsc.com)  
 Deutsch Tel: +49 (0) 180-530 85 85  
 English Tel: +49 (0) 180-532 78 32  
 Français Tel: +49 (0) 180-532 93 58  
 Italiano Tel: +49 (0) 180-534 16 80

**National Semiconductor Hong Kong Ltd.**

19th Floor, Straight Block,  
 Ocean Centre, 5 Canton Rd.  
 Tsimshatsui, Kowloon  
 Hong Kong  
 Tel: (852) 2737-1600  
 Fax: (852) 2736-9960

**National Semiconductor Japan Ltd.**

Tel: 81-043-299-2308  
 Fax: 81-043-299-2408

National does not assume any responsibility for use of any circuitry described, no circuit patent licenses are implied and National reserves the right at any time without notice to change said circuitry and specifications.