

## DS75365 Quad TTL-to-MOS Driver

### General Description

The DS75365 is a quad monolithic integrated TTL-to-MOS driver and interface circuit that accepts standard TTL input signals and provides high-current and high-voltage output levels suitable for driving MOS circuits. It is used to drive address, control, and timing inputs for several types of MOS RAMs including the 1103.

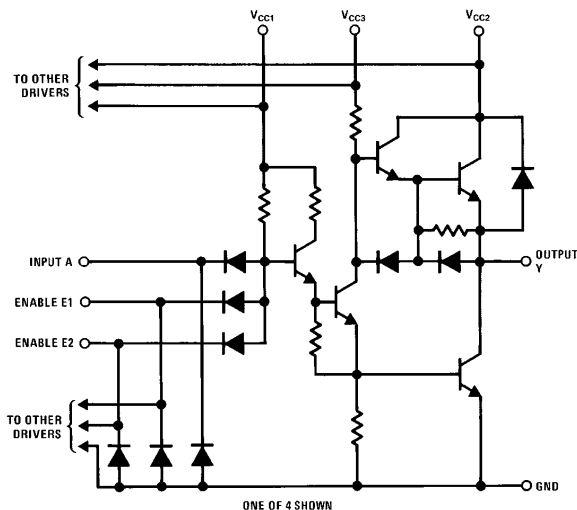
The DS75365 operates from the TTL 5V supply and the MOS  $V_{SS}$  and  $V_{BB}$  supplies in many applications. This device has been optimized for operation with  $V_{CC2}$  supply voltage from 16V to 20V, and with nominal  $V_{CC3}$  supply voltage from 3V to 4V higher than  $V_{CC2}$ . However, it is designed so as to be usable over a much wider range of  $V_{CC2}$  and  $V_{CC3}$ . In some applications the  $V_{CC3}$  power supply can be eliminated by connecting the  $V_{CC3}$  to the  $V_{CC2}$  pin.

- Capable of driving high-capacitance loads
- Compatible with many popular MOS RAMs
- Interchangeable with Intel 3207
- $V_{CC2}$  supply voltage variable over wide range to 24V maximum
- $V_{CC3}$  supply voltage pin available
- $V_{CC3}$  pin can be connected to  $V_{CC2}$  pin in some applications
- TTL compatible diode-clamped inputs
- Operates from standard bipolar and MOS supply voltages
- Two common enable inputs per gate-pair
- High-speed switching
- Transient overdrive minimizes power dissipation
- Low standby power dissipation

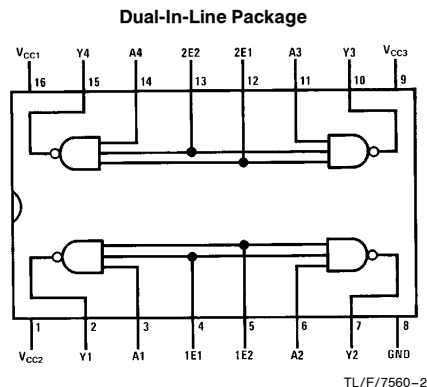
### Features

- Quad positive-logic NAND TTL-to-MOS driver
- Versatile interface circuit for use between TTL and high-current, high-voltage systems

### Schematic and Connection Diagrams



TL/F/7560-1



**Top View**  
Positive Logic:  $Y = \overline{A \cdot E1 \cdot E2}$

Order Number DS75365N or DS75365WM  
See NS Package Number M16B or N16A

**Absolute Maximum Ratings** (Note 1)

If Military/Aerospace specified devices are required, please contact the National Semiconductor Sales Office/Distributors for availability and specifications.

Supply Voltage Range of $V_{CC1}$	– 0.5V to 7V
Supply Voltage Range of $V_{CC2}$	– 0.5V to 25V
Supply Voltage Range of $V_{CC3}$	– 0.5V to 30V
Input Voltage	5.5V
Inter-Input Voltage (Note 4)	5.5V
Storage Temperature Range	– 65°C to + 150°C
Maximum Power Dissipation* at 25°C	
Cavity Package	1509 mW
Molded Package	1476 mW
SO Package	1488 mW
Lead Temperature (Soldering, 10 sec)	300°C

\* Derate cavity package 10.1 mW/°C above 25°C; derate molded package 11.8 mW/°C above 25°C; derate SO package 11.9 mW/°C above 25°C.

**Operating Conditions**

	Min	Max	Units
Supply Voltage ( $V_{CC1}$ )	4.75	5.25	V
Supply Voltage ( $V_{CC2}$ )	4.75	24	V
Supply Voltage ( $V_{CC3}$ )	$V_{CC2}$	28	V
Voltage Difference Between	0	10	V
Supply Voltages: $V_{CC3} - V_{CC2}$			
Operating Ambient Temperature Range ( $T_A$ )	0	70	°C

**Electrical Characteristics** (Notes 2 and 3)

Symbol	Parameter	Conditions	Min	Typ	Max	Units
$V_{IH}$	High-Level Input Voltage		2			V
$V_{IL}$	Low-Level Input Voltage				0.8	V
$V_I$	Input Clamp Voltage	$I_I = -12$ mA			– 1.5	V
$V_{OH}$	High-Level Output Voltage	$V_{CC3} = V_{CC2} + 3V$ , $V_{IL} = 0.8V$ , $I_{OH} = -100$ $\mu$ A	$V_{CC2} - 0.3$	$V_{CC2} - 0.1$		V
		$V_{CC3} = V_{CC2} + 3V$ , $V_{IL} = 0.8V$ , $I_{OH} = -10$ mA	$V_{CC2} - 1.2$	$V_{CC2} - 0.9$		V
		$V_{CC3} = V_{CC2}$ , $V_{IL} = 0.8V$ , $I_{OH} = -50$ $\mu$ A	$V_{CC2} - 1$	$V_{CC2} - 0.7$		V
		$V_{CC3} = V_{CC2}$ , $V_{IL} = 0.8V$ , $I_{OH} = -10$ mA	$V_{CC2} - 2.3$	$V_{CC2} - 1.8$		V
$V_{OL}$	Low-Level Output Voltage	$V_{IH} = 2V$ , $I_{OL} = 10$ mA		0.15	0.3	V
		$V_{CC3} = 15V$ to 28V, $V_{IH} = 2V$ , $I_{OL} = 40$ mA		0.25	0.5	V
$V_O$	Output Clamp Voltage	$V_I = 0V$ , $I_{OH} = 20$ mA			$V_{CC2} + 1.5$	V
$I_I$	Input Current at Maximum Input Voltage	$V_I = 5.5V$			1	mA
$I_{IH}$	High-Level Input Current	$V_I = 2.4V$	A Inputs		40	$\mu$ A
			E1 and E2 Inputs		80	$\mu$ A
$I_{IL}$	Low-Level Input Current	$V_I = 0.4V$	A Inputs		– 1	mA
			E1 and E2 Inputs		– 2	mA
$I_{CC1(H)}$	Supply Current from $V_{CC1}$ , All Outputs High	$V_{CC1} = 5.25V$ , $V_{CC2} = 24V$ $V_{CC3} = 28V$ , All Inputs at 0V, No Load		4	8	mA
$I_{CC2(H)}$	Supply Current from $V_{CC2}$ , All Outputs High			– 2.2	+ 0.25	mA
				– 2.2	– 3.2	mA
$I_{CC3(H)}$	Supply Current from $V_{CC3}$ , All Outputs High			2.2	3.5	mA
$I_{CC1(L)}$	Supply Current from $V_{CC1}$ , All Outputs Low	$V_{CC1} = 5.25V$ , $V_{CC2} = 24V$ $V_{CC3} = 28V$ , All Inputs at 5V, No Load		31	47	mA
$I_{CC2(L)}$	Supply Current from $V_{CC2}$ , All Outputs Low				3	mA
$I_{CC3(L)}$	Supply Current from $V_{CC3}$ , All Outputs Low			16	25	mA
$I_{CC2(H)}$	Supply Current from $V_{CC2}$ , All Outputs High	$V_{CC1} = 5.25V$ , $V_{CC2} = 24V$ $V_{CC3} = 24V$ , All Inputs at 0V, No Load			0.25	mA
$I_{CC3(H)}$	Supply Current from $V_{CC3}$ , All Outputs High				0.5	mA

### Electrical Characteristics (Notes 2, 3) (Continued)

Symbol	Parameter	Conditions	Min	Typ	Max	Units
I <sub>CC2(S)</sub>	Supply Current from V <sub>CC2</sub> , Stand-By Condition	V <sub>CC1</sub> = 0V, V <sub>CC2</sub> = 24V V <sub>CC3</sub> = 24V, All Inputs at 5V, No Load			0.25	mA
I <sub>CC3(S)</sub>	Supply Current from V <sub>CC3</sub> , Stand-By Condition				0.5	mA

**Note 1:** “Absolute Maximum Ratings” are those values beyond which the safety of the device cannot be guaranteed. Except for “Operating Temperature Range” they are not meant to imply that the devices should be operated at these limits. The table of “Electrical Characteristics” provides conditions for actual device operation.

**Note 2:** Unless otherwise specified, min/max limits apply across the 0°C to +70°C range for the DS75365. All typical values are for  $T_A = 25^\circ\text{C}$  and  $V_{CC1} = 5\text{V}$  and  $V_{CC2} = 20\text{V}$  and  $V_{CC3} = 24\text{V}$ .

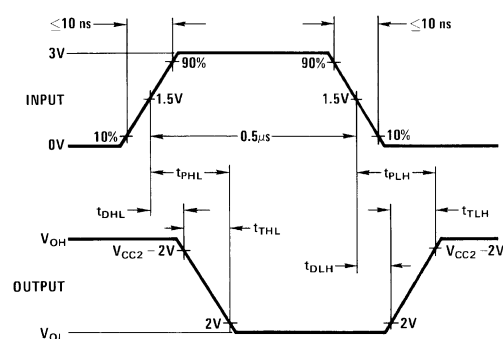
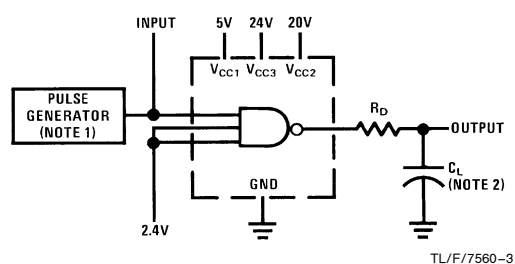
**Note 3:** All currents into device pins shown as positive, out of device pins as negative, all voltages referenced to ground unless otherwise noted. All values shown as max or min on absolute value basis.

**Note 4:** This rating applies between any two inputs of any one of the gates.

### Switching Characteristics $V_{CC1} = 5V, V_{CC2} = 20V, V_{CC3} = 24V, T_A = 25^{\circ}C$

Symbol	Parameter	Conditions	Min	Typ	Max	Units
t <sub>DLH</sub>	Delay Time, Low-to-High Level Output	C <sub>L</sub> = 200 pF R <sub>D</sub> = 24Ω (Figure 1)		11	20	ns
t <sub>DHL</sub>	Delay Time, High-to-Low Level Output			10	18	ns
t <sub>TLH</sub>	Transition Time, Low-to-High Level Output			20	33	ns
t <sub>THL</sub>	Transition Time, High-to-Low Level Output			20	33	ns
t <sub>PLH</sub>	Propagation Delay Time, Low-to-High Level Output		10	31	48	ns
t <sub>PHL</sub>	Propagation Delay Time, High-to-Low Level Output		10	30	46	ns

## AC Test Circuit and Switching Time Waveforms

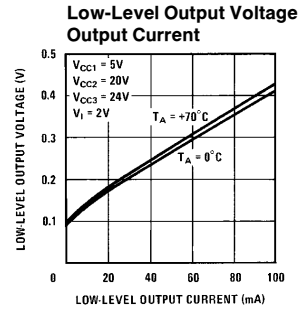
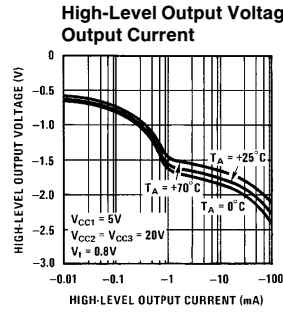
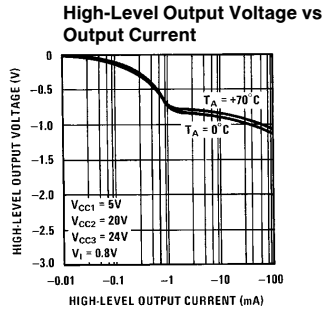


**Note 1:** The pulse generator has the following characteristics: PRR = 1 MHz,  $Z_{OUT} = 58\Omega$ .

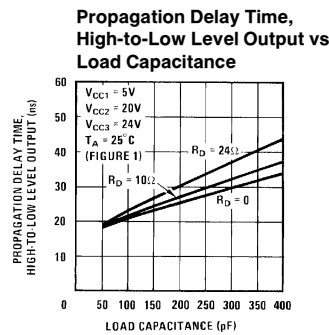
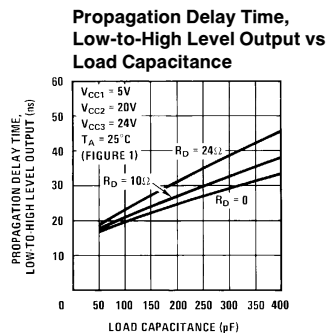
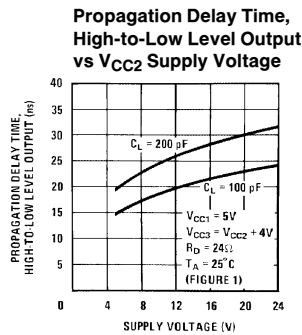
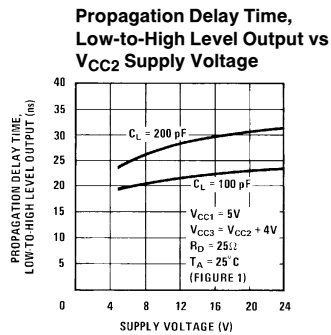
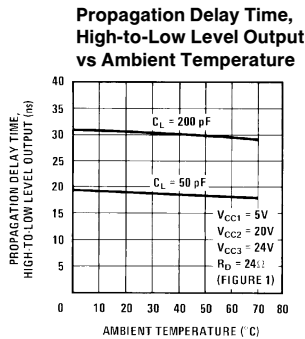
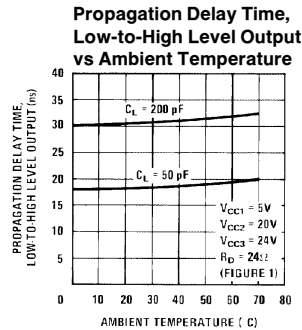
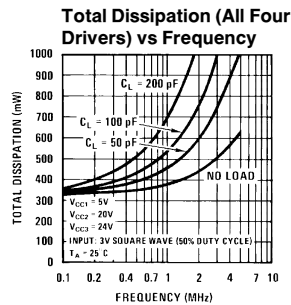
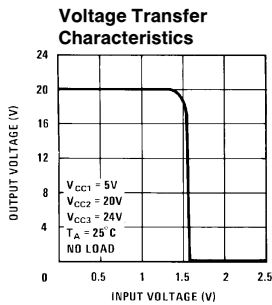
**Note 2:**  $C_L$  includes probe and jig capacitance.

**FIGURE 1. Switching Times, Each Driver**

## Typical Performance Characteristics



TL/F/7560-5



TL/F/7560-6





# Physical Dimensions inches (millimeter)

