

## DS14C335 +3.3V Supply TIA/EIA-232 3 x 5 Driver/Receiver

### General Description

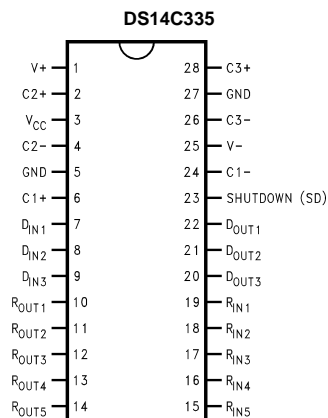
The DS14C335 is three driver, five receiver device which conforms to TIA/EIA-232-E and CCITT V.28 standard specifications. This device employs an internal DC-DC converter to generate the necessary output levels from a +3.3V power supply. A SHUTDOWN (SD) mode reduces the supply current to 10  $\mu$ A maximum. In the SD mode, one receiver is active, allowing ring indicator (RI) to be monitored. PC Board space consumption is minimized by the availability of Shrink Small Outline Packaging (SSOP).

This device's low power requirement and small footprint makes it an ideal choice for Laptop and Notebook applications.

### Features

- Conforms to TIA/EIA-232-E and CCITT V.28 specifications
- Operates with single +3.3V power supply
- Low power requirement— $I_{CC}$  20 mA maximum
- SHUTDOWN mode— $I_{CX}$  10  $\mu$ A maximum
- One Receiver (R5) active during SHUTDOWN
- Operates up to 128 kbps—Lap-Link® Compatible
- Flow through pinout
- 4V/ $\mu$ s minimum Slew Rate guaranteed
- Inter-operates with +5V UARTs
- Available in 28-lead SSOP EIAJ Type II package

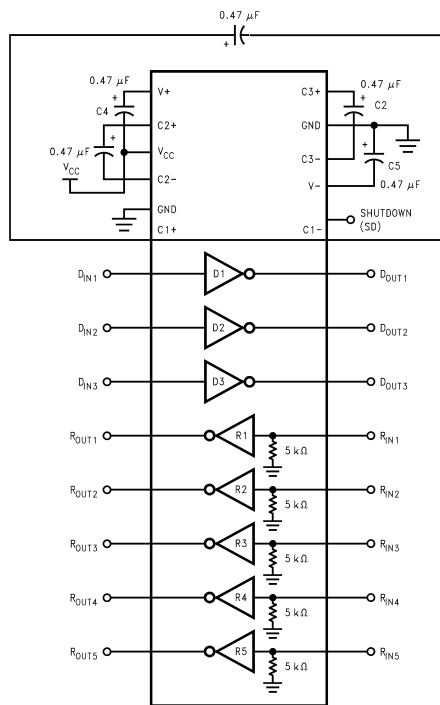
### Connection Diagram



DS011734-1

Order Number DS14C335MSA  
See NS Package Number MSA28

### Functional Diagram



DS011734-2

## Absolute Maximum Ratings (Note 1)

If Military/Aerospace specified devices are required, please contact the National Semiconductor Sales Office/Distributors for availability and specifications.

Supply Voltage ( $V_{CC}$ )	–0.3V to +6V
$V^+$ Pin	( $V_{CC}$ –0.3V) to +14V
$V^-$ Pin	+0.3V to –14V
Input Voltage (DIN, SD)	–0.3V to +5.5V
Driver Output Voltage	( $V^+ + 0.3V$ ) to ( $V^- - 0.3V$ )
Receiver Input Voltage	$\pm 25V$
Receiver Output Voltage	–0.3V to ( $V_{CC} + 0.3V$ )
Junction Temperature	+150°C
Storage Temperature Range	–65°C to +150°C
Lead Temperature (Soldering 4 sec.)	+260°C
Short Circuit Duration ( $D_{OUT}$ )	continuous

Maximum Package Power Dissipation @ +25°C

SSOP MSA Package 1286 mW

Derate MSA Package 10.3 mW/°C above +25°C

ESD Rating

(HBM, 1.5 k $\Omega$ , 100 pF)  $\geq 2.0$  kV

## Recommended Operating Conditions

	Min	Max	Units
Supply Voltage ( $V_{CC}$ )	3.0	3.6	V
DC-DC Converter Capacitors (C1–C5)	0.47		$\mu F$
Operating Free Air Temperature ( $T_A$ )			
DS14C335	0	+70	°C

## Electrical Characteristics (Notes 2, 3)

Over recommended operating conditions, SD = 0.8V, unless otherwise specified.

Symbol	Parameter	Conditions		Min	Typ	Max	Units
DEVICE CHARACTERISTICS							
V+	Positive Power Supply	No Load	D <sub>IN</sub> = 0.8V		+9.3		V
V–	Negative Power Supply	C1–C5 = 0.47 μF	D <sub>IN</sub> = 2.0V		–9.0		V
I <sub>CC</sub>	Supply Current	No Load			11.5	20	mA
I <sub>CX</sub>	SHUTDOWN Supply Current	R <sub>L</sub> = 3 kΩ, SD = V <sub>CC</sub> , 5.5V			1.0	10	μA
V <sub>IH</sub>	High Level Enable Voltage		SD	2.0			V
V <sub>IL</sub>	Low Level Enable Voltage			GND		0.8	V
I <sub>IH</sub>	High Level Enable Current					+2.0	μA
I <sub>IL</sub>	Low Level Enable Current				–2.0		μA
DRIVER CHARACTERISTICS							
V <sub>IH</sub>	High Level Input Voltage		D <sub>IN</sub>	2.0			V
V <sub>IL</sub>	Low Level Input Voltage			GND		0.8	V
I <sub>IH</sub>	High Level Input Current					+1.0	μA
I <sub>IL</sub>	Low Level Input Current				–1.0		μA
V <sub>OH</sub>	High Level Output Voltage	R <sub>L</sub> = 3 kΩ		+5.0	+7.1		V
V <sub>OL</sub>	Low Level Output Voltage				–6.3	–5.0	V
I <sub>OS+</sub>	Output High Short Circuit Current	V <sub>O</sub> = 0V, V <sub>IN</sub> = 0.8V (Note 7)		–40	–16.5	–8	mA
I <sub>OS–</sub>	Output Low Short Circuit Current	V <sub>O</sub> = 0V, V <sub>IN</sub> = 2.0V (Note 7)		6	12.3	40	mA
R <sub>O</sub>	Output Resistance	–2V ≤ V <sub>O</sub> ≤ +2V, V <sub>CC</sub> = GND = 0V		300			Ω
RECEIVER CHARACTERISTICS (Note 4)							
V <sub>TH</sub>	Input High Threshold Voltage	R1–R5, SD = 0.8V			1.4	2.4	V

## Electrical Characteristics (Notes 2, 3) (Continued)

Over recommended operating conditions, SD = 0.8V, unless otherwise specified.

Symbol	Parameter	Conditions	Min	Typ	Max	Units
<b>RECEIVER CHARACTERISTICS</b> (Note 4)						
V <sub>TL</sub>	Input Low Threshold Voltage	R5, 2.0V ≤ SD ≤ 5.5V		2.0	2.8	V
		R1–R5, SD = 0.8V	0.4	1.1		V
		R5, 2.0V ≤ SD ≤ 5.5V	0.1	0.5		V
V <sub>HY</sub>	Hysteresis		50	300		mV
R <sub>IN</sub>	Input Resistance	V <sub>IN</sub> = ±3V to ±15V	3.0	3.8	7.0	kΩ
I <sub>IN</sub>	Input Current	V <sub>IN</sub> = +15V	2.14		5.0	mA
		V <sub>IN</sub> = +3V	0.43		1.0	mA
		V <sub>IN</sub> = –3V	–1.0		–0.43	mA
		V <sub>IN</sub> = –15V	–5.0		–2.14	mA
V <sub>OH</sub>	High Level Output Voltage	V <sub>IN</sub> = –3V, I <sub>OH</sub> = –1 mA	2.4	3.1		V
		V <sub>IN</sub> = –3V, I <sub>OH</sub> = –100 μA	2.8	3.28		V
V <sub>OL</sub>	Low Level Output Voltage	V <sub>IN</sub> = +3V, I <sub>OL</sub> = +2 mA		0.23	0.4	V

## Switching Characteristics (Note 2)

Over recommended operating conditions, SD = 0.8V, unless otherwise specified.

Symbol	Parameter	Conditions	Min	Typ	Max	Units
DRIVER CHARACTERISTICS						
t <sub>PLH</sub>	Propagation Delay LOW to HIGH	R <sub>L</sub> = 3 kΩ C <sub>L</sub> = 50 pF (Figures 1, 2)	0.1	0.6	1.0	μs
t <sub>PHL</sub>	Propagation Delay HIGH to LOW		0.1	0.6	1.0	μs
t <sub>SK</sub>	Skew  t <sub>PLH</sub> –t <sub>PHL</sub>			0	0.2	μs
SR1	Output Slew Rate	R <sub>L</sub> = 3 kΩ to 7 kΩ, C <sub>L</sub> = 50 pF (Figure 2)	4	13	30	V/μs
SR2	Output Slew Rate	R <sub>L</sub> = 3 kΩ, C <sub>L</sub> = 2500 pF (Figure 2)	4	10	30	V/μs
t <sub>PLS</sub>	Propagation Delay LOW to SD	R <sub>L</sub> = 3 kΩ C <sub>L</sub> = 50 pF (Figures 5, 6)		0.48		ms
t <sub>PSL</sub>	Propagation Delay SD to LOW			1.88		ms
t <sub>PHS</sub>	Propagation Delay HIGH to SD			0.62		ms
t <sub>PSH</sub>	Propagation Delay SD to HIGH			1.03		ms
RECEIVER CHARACTERISTICS						
t <sub>PLH</sub>	Propagation Delay LOW to HIGH	C <sub>L</sub> = 50 pF (Figures 3, 3)	0.1	0.4	1.0	μs
t <sub>PHL</sub>	Propagation Delay HIGH to LOW		0.1	0.6	1.0	μs
t <sub>SK</sub>	Skew  t <sub>PLH</sub> –t <sub>PHL</sub>			0.2	0.8	μs
t <sub>PLS</sub>	Propagation Delay LOW to SD	R <sub>L</sub> = 1 kΩ C <sub>L</sub> = 50 pF R1–R4 Only (Figures 7, 8)		0.13		μs
t <sub>PSL</sub>	Propagation Delay SD to LOW			1.0		μs
t <sub>PHS</sub>	Propagation Delay HIGH to SD			0.19		μs
t <sub>PSH</sub>	Propagation Delay SD to HIGH			0.58		μs

**Note 1:** “Absolute Maximum Ratings” are those values beyond which the safety of the device cannot be guaranteed. They are not meant to imply that the devices should be operated at these limits. The tables of “Electrical Characteristics” specify conditions for device operation.

**Note 2:** Typical values are given for V<sub>CC</sub> = 3.3V and T<sub>A</sub> = +25°C.

**Note 3:** Current into device pins is defined as positive. Current out of device pins is defined as negative. All voltages are referenced to ground unless otherwise specified.

**Note 4:** Receiver characteristics are guaranteed for SD = 0.8V. When SD = 2.0V, receiver five (R5) is active and meets receiver parameters in SHUTDOWN (SD) mode, unless otherwise specified.

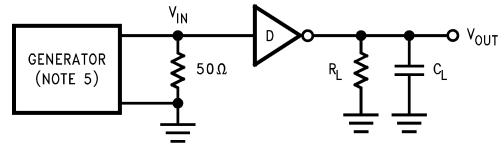
**Note 5:** Generator characteristics for driver input: f = 64 kHz (128 kbits/sec), t<sub>r</sub> = t<sub>f</sub> < 10 ns, V<sub>IH</sub> = 3V, V<sub>IL</sub> = 0V, duty cycle = 50%.

**Note 6:** Generator characteristics for receiver input: f = 64 kHz (128 kbits/sec), t<sub>r</sub> = t<sub>f</sub> = 200 ns, V<sub>IH</sub> = 3V, V<sub>IL</sub> = –3V, duty cycle = 50%.

## Switching Characteristics (Note 2) (Continued)

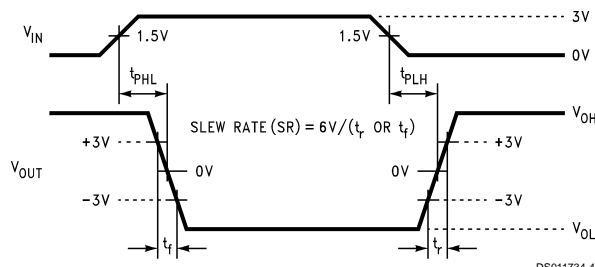
**Note 7:** Only one driver output shorted at a time.

### Parameter Measurement Information



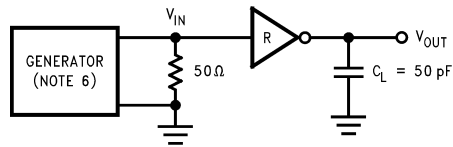
DS011734-3

**FIGURE 1. Driver Propagation Delay and Slew Rate Test Circuit**



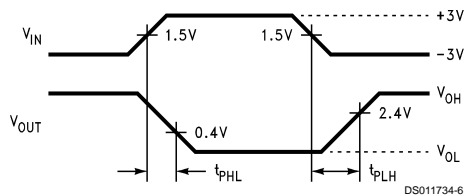
DS011734-4

**FIGURE 2. Driver Propagation Delay and Slew Rate Timing**



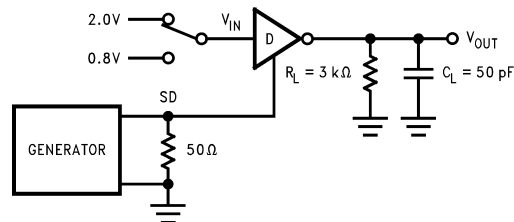
DS011734-5

**FIGURE 3. Receiver Propagation Delay Test Circuit**



DS011734-6

**FIGURE 4. Receiver Propagation Delay Timing**



DS011734-7

**FIGURE 5. Driver SHUTDOWN (SD) Delay Test Circuit**

## Parameter Measurement Information (Continued)

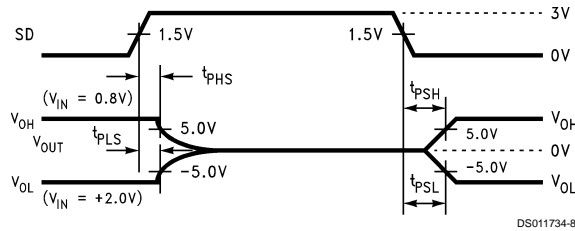


FIGURE 6. Driver SHUTDOWN (SD) Delay Timing

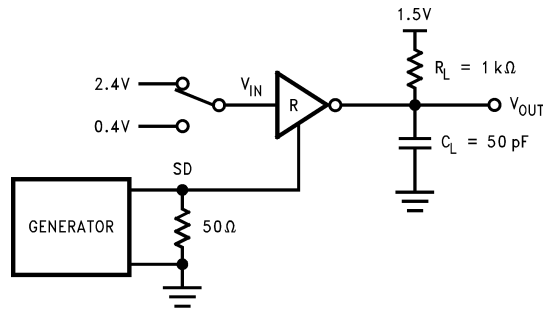


FIGURE 7. Receiver SHUTDOWN (SD) Delay Test Circuit

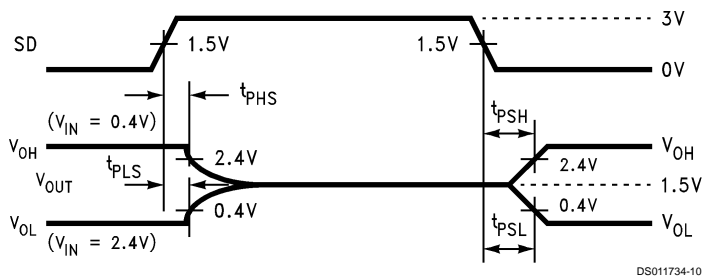


FIGURE 8. Receiver SHUTDOWN (SD) Delay Timing

## Pin Descriptions

**V<sub>CC</sub> (Pin 3).** Power supply pin for the device, +3.3V (±0.3V).

**V<sub>+</sub> (Pin 1).** Positive supply for TIA/EIA-232-E drivers. Recommended external capacitor—0.47 μF (16V). This supply is not intended to be loaded externally.

**V<sub>-</sub> (Pin 25).** Negative supply for TIA/EIA-232-E drivers. Recommended external capacitor—0.47 μF (16V). This supply is not intended to be loaded externally.

**C1+, C1- (Pins 6, 24).** External capacitor connection pins. Recommended capacitor—0.47 μF (6.3V).

**C2+, C2- (Pins 2, 4).** External capacitor connection pins. Recommended capacitor—0.47 μF (16V).

**C3+, C3- (Pins 28, 26).** External capacitor connection pins. Recommended capacitor—0.47 μF (6.3V).

**SHUTDOWN (SD) (Pin 23).** A High on the SHUTDOWN pin will lower the total I<sub>CC</sub> current to less than 10 μA, providing a

low power state. In this mode receiver R5 remains active. The SD pin should be driven or tied low (GND) to disable the shutdown mode.

**D<sub>IN</sub> 1–3 (Pins 7, 8, 9).** Driver input pins are JEDEC 3.3V standard compatible.

**D<sub>OUT</sub> 1–3 (Pins 22, 21, 20).** Driver output pins conform to TIA/EIA-232 -E levels.

**R<sub>IN</sub> 1–5 (Pins 19, 18, 17, 16, 15).** Receiver input pins accept TIA/EIA-232-E input voltages (±25V). Receivers guarantees hysteresis of TBD mV. Unused receiver input pins may be left open. Internal input resistor (5 kΩ) pulls input LOW, providing a failsafe HIGH output.

**R<sub>OUT</sub> 1–5 (Pins 10, 11, 12, 13, 14).** Receiver output pins are JEDEC 3.3V standard compatible.

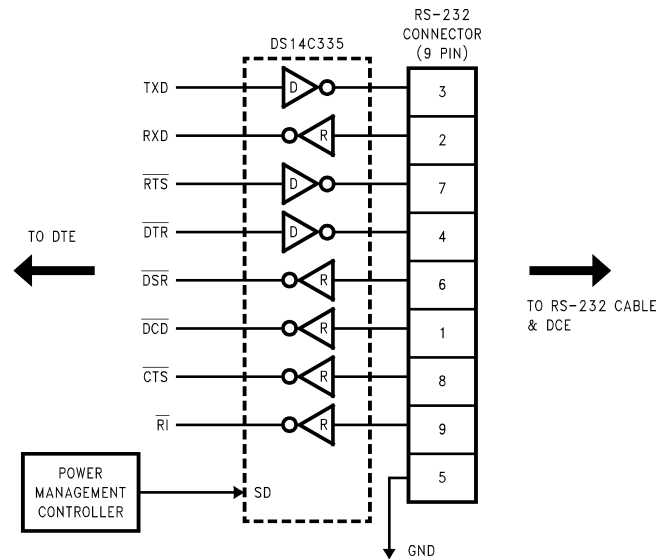
**GND (Pin 27).** Ground Pin.

## Application Information

### 9-Pin SERIAL PORT APPLICATION

In a typical Data Terminal Equipment (DTE) to Data Circuit-Terminating Equipment (DCE) 9-pin de-facto interface implementation, 2 data lines and 6 control lines are required. The data lines are TXD and RXD and the control lines are RTS, DTR, DSR, DCD, CTS and RI. The DS14C335 is a 3 x 5 Driver/Receiver and offers a single chip solution for the DTE interface as shown in *Figure 9*.

Ring Indicator (RI) is used to inform the DTE that an incoming call is coming from a remote DCE. When the DS14C335 is in SHUTDOWN (SD) mode, receiver five (R5) remains active and monitors RI circuit. This active receiver (R5) alerts the DTE to switch the DS14C335 from SHUTDOWN to active mode.



DS011734-11

FIGURE 9. Typical DTE Application

### MOUSE DRIVING

The DS14C335 was tested for drive current under the following mouse driving conditions:

- Two driver outputs set at  $V_{OH}$  and their outputs were tied together (paralleled), sourcing current to supply the V+ terminal of the mouse electronics
- One driver output set at  $V_{OL}$  to sink the current from the V- terminal of the mouse electronics
- One receiver was used to accept data from the mouse
- Power Supply Voltage ( $V_{CC}$ ): 3.0V to 3.6V

Completion of the testing (performed by National's Data Transmission Applications Group and a major PC manufacturer) concluded that the DS14C335 and its DC-DC Converter supplied adequate drive capability to power a typical PC mouse. The mouse tested was specified with the following conditions:

- 10 mA at +6V
- 5.0 mA at -6V

Since driver current is limited, it is recommended that newer lower power mice be specified for battery powered applications. Using older high power mice is wasteful of precious battery charge.

### EXTERNAL DC-DC CONVERTOR COMPONENTS

The DS14C335 with its unique DC-DC Converter triples the power supply voltage (3.0V) to +9.3V and then inverts it to a -9V potential. This unique converter **ONLY** requires 5 external surface mount 0.47  $\mu$ F capacitors. The five identical components were chosen to simplify PCB layout and the procurement of components. The DS14C335's DC-DC Converter also provides a larger signal swing (higher at RS-232 standard data rates) which translates to more noise margin for the rejection of ground potential differences, induced noise, and crosstalk compared to other DC-DC converter schemes which only provide limited signal swing and limited noise margin.

### DC-DC CONVERTOR CAPACITORS

The use of polarized capacitors is not required. However, if they are used, the polarity indicated in the DS14C335 Functional Diagram must be honored for proper operation. Surface mount capacitors or ceramic capacitors may be used, however, for optimal efficiency, capacitors with a low effective series resistance (ESR) should be used. Values in the low Ohms( $\Omega$ ) is normally acceptable.

### INTEROPERATION WITH +5V UARTs

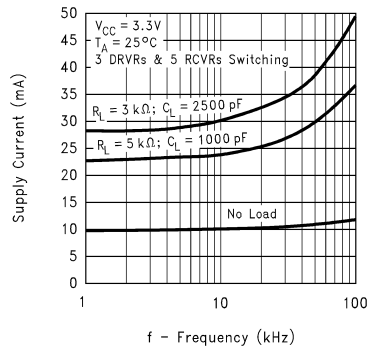
The DS14C335 provides full RS-232 driver output levels and a single chip solution for the popular 9-pin defacto serial port. This device may be used in either pure +3V applications or

## Application Information (Continued)

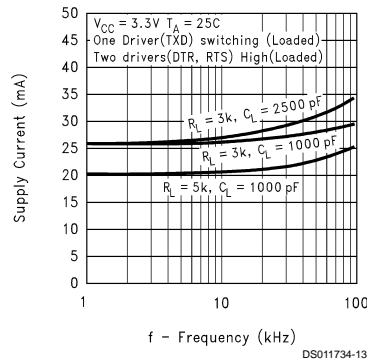
mixed power supplied +3V/+5V applications. The Driver Input (DIN) and ShutDown (SD) input pins can directly accept full +5V levels without the need for any external components. The Receiver Output (ROUT) is specified at 2.4V minimum while sourcing 1 mA. This level is compatible with standard TTL thresholds. For a complete discussion on "Interoperation of the DS14C335 with +5V UARTs" please see National Application Note AN-876.

## Typical Performance Characteristics

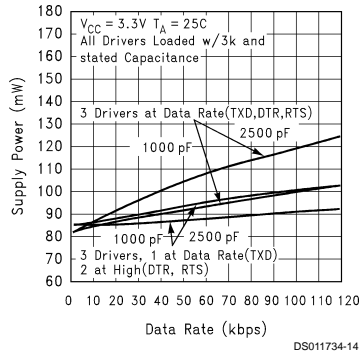
**Supply Current vs Frequency vs Driver Loads**



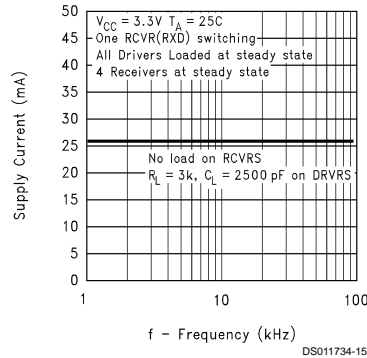
**Supply Current vs Frequency vs Driver Loads**



**Supply Power vs Data Rate**

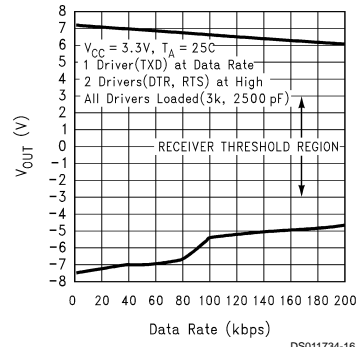


**Supply Current vs Frequency (Receiver)**

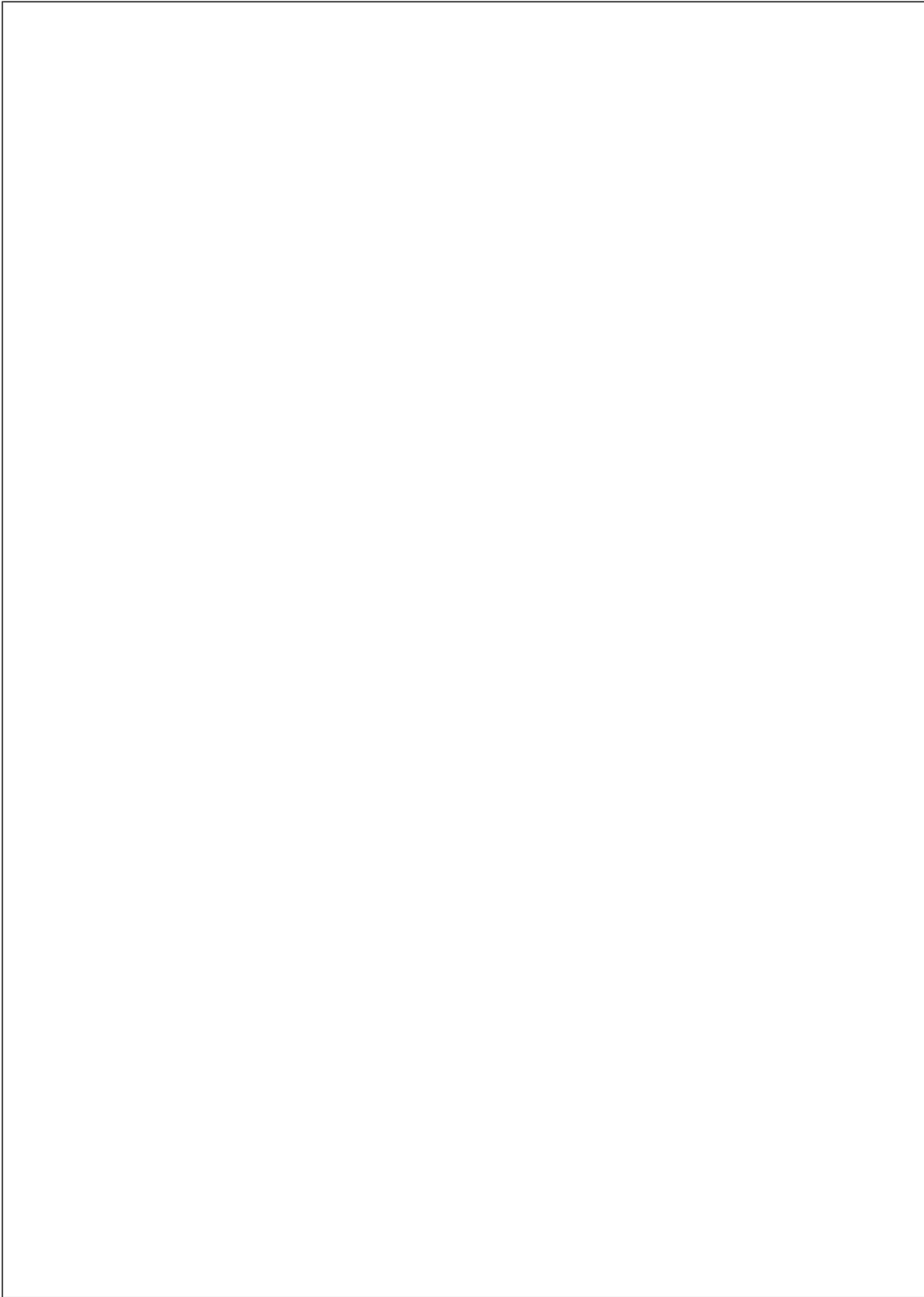


## Typical Performance Characteristics (Continued)

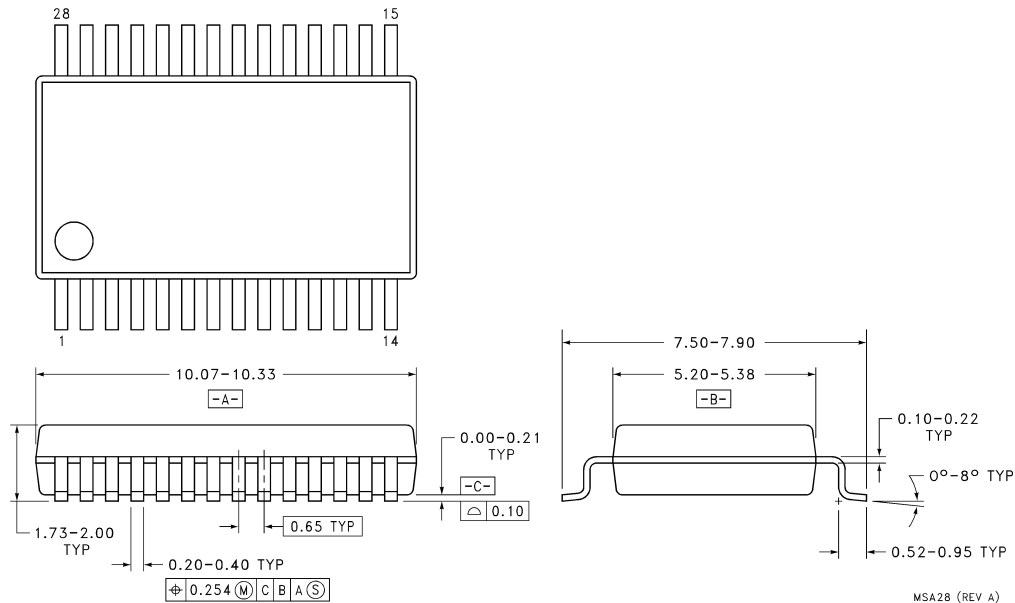
Driver Output vs Data Rate







## Physical Dimensions inches (millimeters) unless otherwise noted



## LIFE SUPPORT POLICY

NATIONAL'S PRODUCTS ARE NOT AUTHORIZED FOR USE AS CRITICAL COMPONENTS IN LIFE SUPPORT DEVICES OR SYSTEMS WITHOUT THE EXPRESS WRITTEN APPROVAL OF THE PRESIDENT OF NATIONAL SEMICONDUCTOR CORPORATION. As used herein:

1. Life support devices or systems are devices or systems which, (a) are intended for surgical implant into the body, or (b) support or sustain life, and whose failure to perform when properly used in accordance with instructions for use provided in the labeling, can be reasonably expected to result in a significant injury to the user.
2. A critical component in any component of a life support device or system whose failure to perform can be reasonably expected to cause the failure of the life support device or system, or to affect its safety or effectiveness.



**National Semiconductor Corporation**  
Americas  
Tel: 1-800-272-9959  
Fax: 1-800-737-7018  
Email: support@nsc.com

www.national.com

**National Semiconductor Europe**

Fax: +49 (0) 1 80-530 85 86  
Email: europe.support@nsc.com  
Deutsch Tel: +49 (0) 1 80-530 85 85  
English Tel: +49 (0) 1 80-532 78 32  
Français Tel: +49 (0) 1 80-532 93 58  
Italiano Tel: +49 (0) 1 80-534 16 80

**National Semiconductor Asia Pacific Customer Response Group**

Tel: 65-2544466  
Fax: 65-2504466  
Email: sea.support@nsc.com

**National Semiconductor Japan Ltd.**

Tel: 81-3-5620-6175  
Fax: 81-3-5620-6179