

LM385 Feedback Provides Regulator Isolation

National Semiconductor
Application Note 715
Robert Pease
Fran Hoffart
November 1990



You can use a conventional 4N27 optocoupler in a feedback arrangement (*Figure 1*) to design a switching regulator with a floating output. The LM3524 switch-mode-regulator IC is configured as a simple flyback power supply with transformer-isolated output. The LM385 acts as a reference and comparison amplifier that satisfies the 4N27's current demands for balancing the dc feedback to pin 2 of the LM3524, thereby closing the loop. The LM385 automatically compensates for any LED degradation or optical-coupling loss.

The 4N27 specs a 0.1 dc to 1.6 dc gain range; the ac gain varies from 0.05 to 1.0. Fortunately, the "Miller" damper

from pins 5 to 6 nullifies the effect of the wide gain variance. Moreover, the damper provides excellent loop stability for a wide range of 4N27 optocouplers from several manufacturers. In the example shown, the LM385 provides 0.5 mA to 5 mA to the optocoupler.

If the 5V output available from this circuit does not meet your needs, choose $R_2 = R_1 (V_{OUT} - 1.25) / 1.25$. If V_{OUT} is greater than 6V, insert a zener diode between points X and Y, with $V_Z = V_{OUT} - 5V$; this addition prevents the voltage across the LM385 from exceeding its 5.3V max limit. The circuit is suitable for regulated output voltages from 3.2V to 25V.

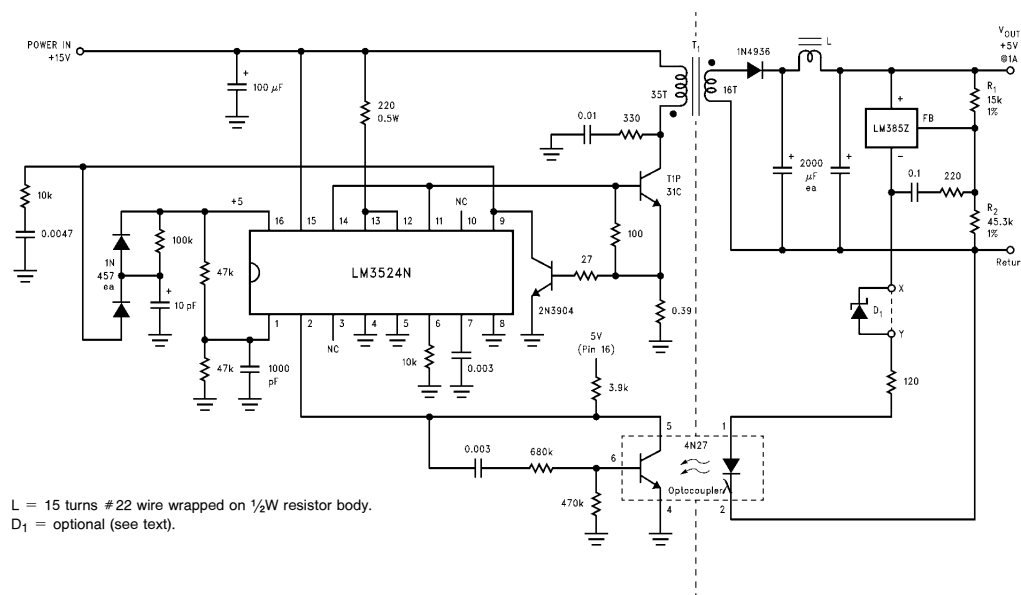


FIGURE 1. Optocoupler-based feedback circuit produces galvanically-isolated, regulated voltages. The heavy negative feedback compensates for wide variations in optocoupler gains. The values portrayed in this schematic yield 5V output; by varying R_2 , you can obtain voltages from 3.2V to 25V.

LM385 Feedback Provides Regulator Isolation

AN-715

LIFE SUPPORT POLICY

NATIONAL'S PRODUCTS ARE NOT AUTHORIZED FOR USE AS CRITICAL COMPONENTS IN LIFE SUPPORT DEVICES OR SYSTEMS WITHOUT THE EXPRESS WRITTEN APPROVAL OF THE PRESIDENT OF NATIONAL SEMICONDUCTOR CORPORATION. As used herein:

1. Life support devices or systems are devices or systems which, (a) are intended for surgical implant into the body, or (b) support or sustain life, and whose failure to perform, when properly used in accordance with instructions for use provided in the labeling, can be reasonably expected to result in a significant injury to the user.
2. A critical component is any component of a life support device or system whose failure to perform can be reasonably expected to cause the failure of the life support device or system, or to affect its safety or effectiveness.



National Semiconductor Corporation 2900 Semiconductor Drive P.O. Box 58090 Santa Clara, CA 95052-8090 Tel: 1(800) 272-9959 TWX: (910) 339-9240	National Semiconductor GmbH Livny-Gargan-Str. 10 D-82256 Fürstenfeldbruck Germany Tel: (81-41) 35-0 Telex: 527849 Fax: (81-41) 35-1	National Semiconductor Japan Ltd. Sumitomo Chemical Engineering Center Bldg. 7F 1-7-1, Nakase, Mihama-Ku Chiba-City, Ciba Prefecture 261 Tel: (043) 299-2300 Fax: (043) 299-2500	National Semiconductor Hong Kong Ltd. 13th Floor, Straight Block, Ocean Centre, 5 Canton Rd. Tsimshatsui, Kowloon Hong Kong Tel: (852) 2737-1600 Fax: (852) 2736-9960	National Semicondutores Do Brazil Ltda. Rue Deputado Lacorda Franco 120-3A Sao Paulo-SP Brazil 05418-000 Tel: (55-11) 212-5066 Telex: 391-1131931 NSBR BR Fax: (55-11) 212-1181	National Semiconductor (Australia) Pty, Ltd. Building 16 Business Park Drive Monash Business Park Nottingham, Melbourne Victoria 3168 Australia Tel: (3) 558-9999 Fax: (3) 558-9998
--	--	---	--	---	---

National does not assume any responsibility for use of any circuitry described, no circuit patent licenses are implied and National reserves the right at any time without notice to change said circuitry and specifications.