

Circuit Applications of Multiplying CMOS D to A Converters

National Semiconductor
Application Note 269
September 1981

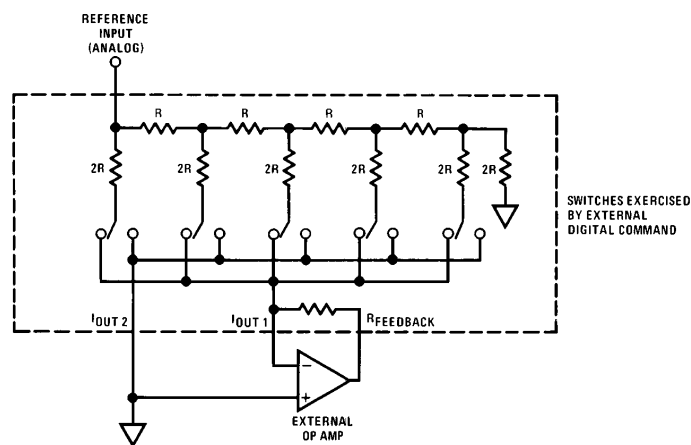


Circuit Applications of Multiplying CMOS D to A Converters

The 4-quadrant multiplying CMOS D to A converter (DAC) is among the most useful components available to the circuit designer. Because CMOS DACs allow a digital word to operate on an analog input, or vice versa, the output can represent a sophisticated function. Unlike most DAC units, CMOS types permit true bipolar analog signals to be applied to the reference input of the DAC (see shaded area for CMOS DAC details).

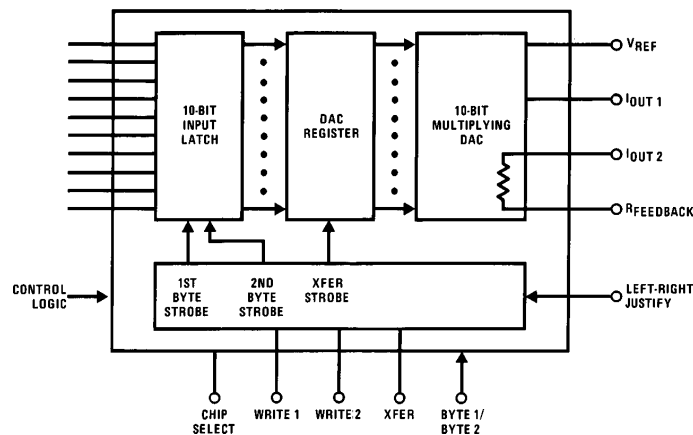
This feature is one of the keys to the CMOS DAC's versatility. Although D to A converters are usually thought of as system data converters, they can also be used as circuit elements to achieve complex functions. Some CMOS

DACs contain internal logic which makes interface with microprocessors and digital systems easy. In circuit oriented applications, however, the "bare bones" DACs will usually suffice. As an example, *Figure 1* shows a 0 kHz–30 kHz variable frequency sine wave generator which has essentially instantaneous response to digital commands to change frequency. This capability is valuable in automatic test equipment and instrumentation applications and is not readily achievable with normal sine wave generation techniques. The linearity of output frequency to digital code input is within 0.1% for each of the 1024 discrete output frequencies the 10-bit DAC can generate.



Details (Simplified) of CMOS DAC1020—Last 5 Bits Shown

Other CMOS DACs are similar in the nature of operation but also include internal logic for ease of interface to microprocessor based systems. Typical is the DAC1000 shown below.



TL/H/5628-1

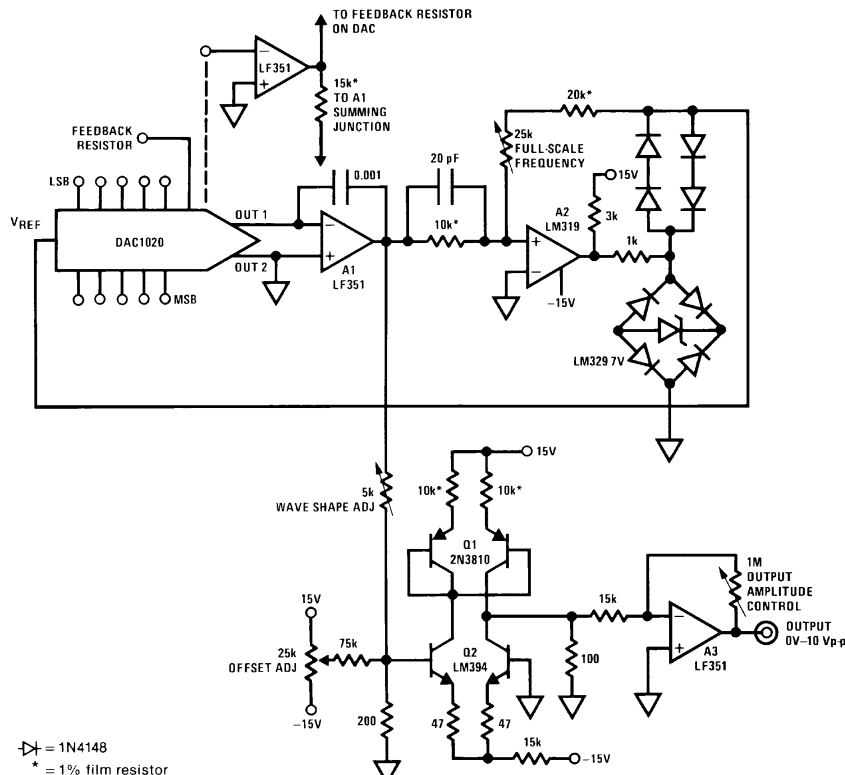


FIGURE 1

TL/H/5628-2

To understand this circuit, assume A2's output is negative. This means that its zener bounded output applies $-7V$ to the DAC's reference input. Under these conditions, the DAC pulls a current from A1's summing junction which is directly proportional to the digital code applied to the DAC. A1, an integrator, responds by ramping in the positive direction. When A1 ramps far enough so that the potential at A2's "+" input just goes positive, A2's output changes state and the potential at the DAC's reference input becomes $+7V$. The DAC output current reverses and the A1 integrator is forced to move in the negative direction. When the negative-going output of A1 becomes large enough to pull A2's "+" input slightly, negative A2's output changes state and the process repeats. The resultant amplitude stabilized triangle wave at A1's output will have a frequency which is dependent on the digital word at the DAC. The 20 pF capacitor provides a slight leading response at high operating frequencies to offset the 80 ns response time of A2, aiding overall circuit linearity. The triangle wave is applied to the Q1-Q2 shaper network, which furnishes a sine wave output. The shaper works by utilizing the well known logarithmic relationship between V_{BE} and collector current in a transistor to smooth the triangle wave.

To adjust this circuit, set all DAC digital inputs high and trim the $25k$ pot for 30 kHz output. Next, connect a distortion analyzer to the circuit output and adjust the $5k$ and $75k$ potentiometers associated with the shaper network for minimum distortion. The output amplifier may be adjusted with its potentiometer to provide the desired output amplitude.

This circuit permits rapid switching of output frequency which is not possible with other methods. Figure 2 shows the clean, almost instantaneous response when the digital word is changed. Note that the output frequency shifts immediately by more than an order of magnitude with no untoward dynamics or delays. If operation over temperature is required, the absolute change in resistance in the DAC's internal ladder network may cause unacceptable errors. This can be corrected by reversing A2's inputs and inserting an amplifier (dashed lines in schematic) between the DAC and A1. Because this amplifier uses the DAC's internal feedback resistor, the temperature error in the ladder is cancelled and more stable operation results.

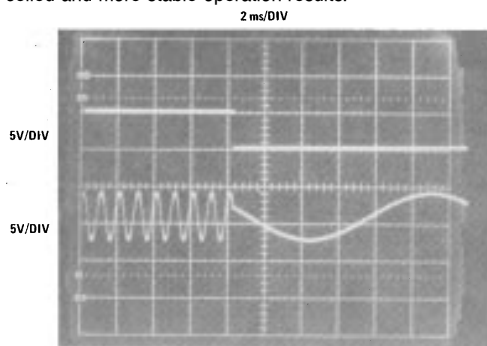
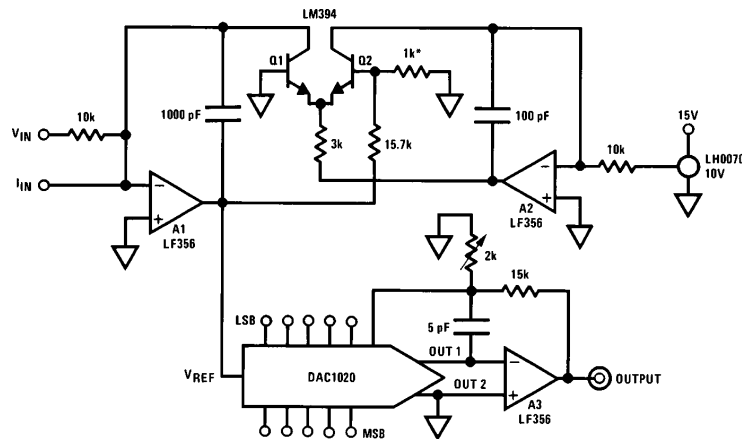


FIGURE 2

TL/H/5628-3



TL/H/5628-5



*Tel-Labs Q-81

FIGURE 5

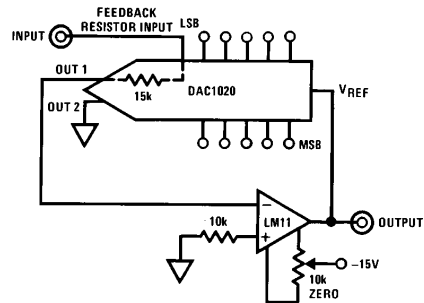


FIGURE 6

TL/H/5628-7

Digitally Controlled Filter

In Figure 7 the DAC is used to control the cutoff frequency of a filter. The equation given in the figure governs the cutoff frequency of the circuit. In this circuit, the DAC allows high resolution digital control of frequency response by effectively varying the time constant of the A3 integrator. Figure 8 dramatically demonstrates this. Here, the circuit is driven from the test circuit shown in Figure 7.

As each input square wave is presented to the filter the one-of-ten decoder sequentially shifts a "one" to the next DAC digital input line. Trace A is the input waveform, while Trace B is the waveform at A1's output (the reference input of the DAC). The circuit output at A3 appears as Trace C. It is clearly evident that as the decoder shifts the "one" towards the lower order DAC inputs the circuit's cutoff frequency decays rapidly.

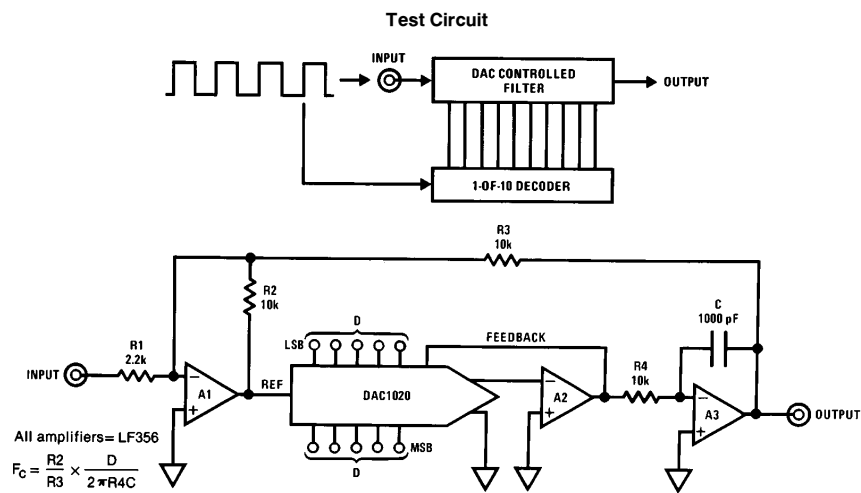


FIGURE 7

TL/H/5628-8

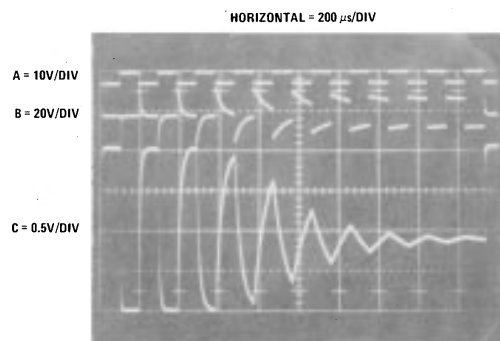


FIGURE 8

TL/H/5628-9

LIFE SUPPORT POLICY

NATIONAL'S PRODUCTS ARE NOT AUTHORIZED FOR USE AS CRITICAL COMPONENTS IN LIFE SUPPORT DEVICES OR SYSTEMS WITHOUT THE EXPRESS WRITTEN APPROVAL OF THE PRESIDENT OF NATIONAL SEMICONDUCTOR CORPORATION. As used herein:

1. Life support devices or systems are devices or systems which, (a) are intended for surgical implant into the body, or (b) support or sustain life, and whose failure to perform, when properly used in accordance with instructions for use provided in the labeling, can be reasonably expected to result in a significant injury to the user.
2. A critical component is any component of a life support device or system whose failure to perform can be reasonably expected to cause the failure of the life support device or system, or to affect its safety or effectiveness.

 National Semiconductor Corporation 1111 West Bardin Road Arlington, TX 76017 Tel: 1(800) 272-9959 Fax: 1(800) 737-7018	National Semiconductor Europe Fax: (+49) 0-180-530 85 86 Email: cnjwge@tevm2.nsc.com Deutsch Tel: (+49) 0-180-530 85 85 English Tel: (+49) 0-180-532 78 32 Français Tel: (+49) 0-180-532 93 58 Italiano Tel: (+49) 0-180-534 16 80	National Semiconductor Hong Kong Ltd. 19th Floor, Straight Block, Ocean Centre, 5 Canton Rd. Tsimshatsui, Kowloon Hong Kong Tel: (852) 2737-1600 Fax: (852) 2736-9960	National Semiconductor Japan Ltd. Tel: 81-043-299-2309 Fax: 81-043-299-2408
---	---	--	--

National does not assume any responsibility for use of any circuitry described, no circuit patent licenses are implied and National reserves the right at any time without notice to change said circuitry and specifications.