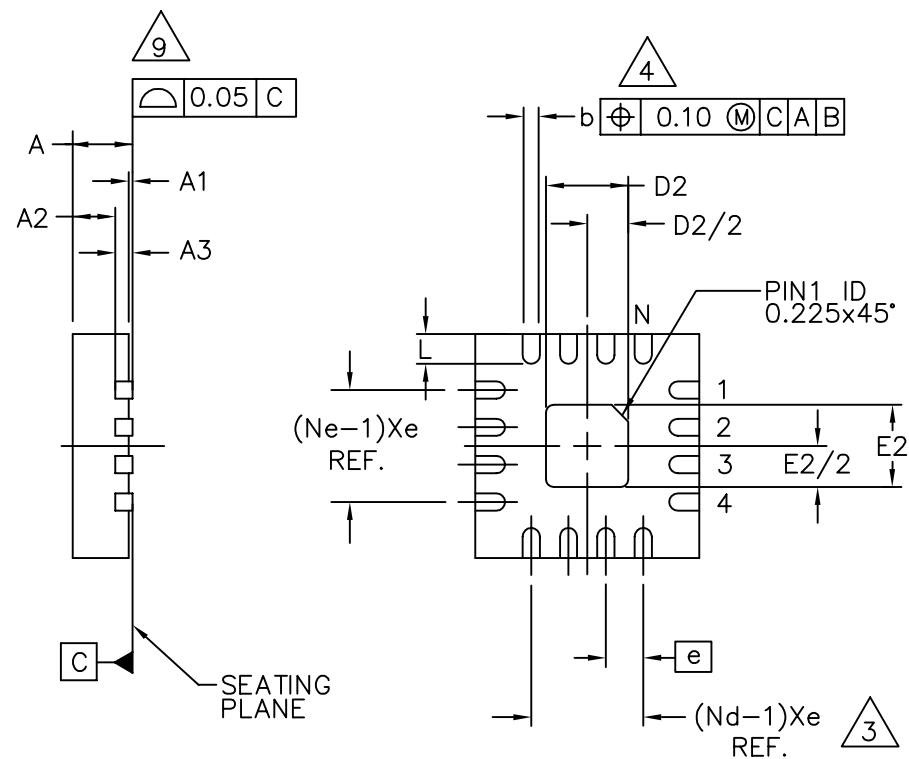
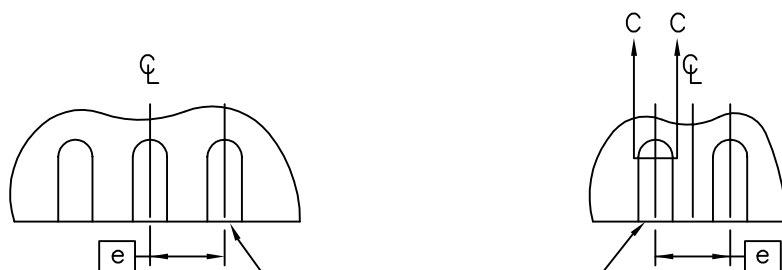


TOP VIEW

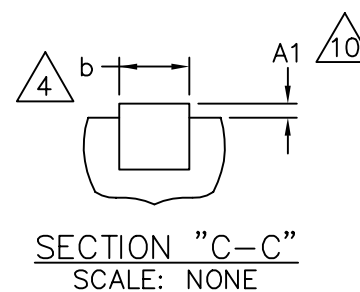


BOTTOM VIEW




FOR ODD TERMINAL/SIDE

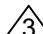
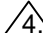
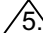

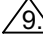
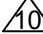
FOR EVEN TERMINAL/SIDE



PROPRIETARY INFORMATION			
TITLE:			
PACKAGE OUTLINE, 16L QFN, 3x3x0.80 MM			
APPROVAL	DOCUMENT CONTROL NO.	REV.	1/2
	21-0136	A	

SYMBOL	COMMON DIMENSIONS			NOTE
	MIN.	NOM.	MAX.	
A	—	0.75	0.80	
A1	0.00	0.02	0.05	
A2	—	0.50	0.55	
A3	0.20 REF.			
D	3.00 BSC			
E	3.00 BSC			
	0.50 BSC			
L	0.30	0.40	0.50	
b	0.18	0.23	0.30	4

# NOTES:

- DIE THICKNESS ALLOWABLE IS 0.203mm MAXIMUM (.008 INCHES MAXIMUM).
- DIMENSIONING & TOLERANCES CONFORM TO ASME Y14.5M. - 1994.
-  N IS THE NUMBER OF TERMINALS.  
Nd IS THE NUMBER OF TERMINALS IN X-DIRECTION.  
Ne IS THE NUMBER OF TERMINALS IN Y-DIRECTION.
-  DIMENSION b APPLIES TO PLATED TERMINAL AND IS MEASURED BETWEEN 0.20 AND 0.25mm FROM TERMINAL TIP.
-  THE PIN #1 IDENTIFIER MUST BE EXISTED ON THE TOP SURFACE OF THE PACKAGE BY USING INDENTATION MARK OR OTHER FEATURE OF PACKAGE BODY.
-  EXACT SHAPE AND SIZE OF THIS FEATURE IS OPTIONAL.
- ALL DIMENSIONS ARE IN MILLIMETERS.
- PACKAGE WARPAGE MAX 0.05mm.
-  APPLIED FOR EXPOSED PAD AND TERMINALS. EXCLUDE EMBEDDING PART OF EXPOSED PAD FROM MEASURING.
-  APPLIED ONLY FOR TERMINALS.
- MEETS JEDEC MO220.

## PACKAGE VARIATIONS

PKG. CODE	SYMBOLS								
	N	Nd	Ne	D2			E2		
				MIN.	NOM.	MAX.	MIN.	NOM.	MAX.
G1633F-4	16	4	4	0.65	0.80	0.95	0.65	0.80	0.95
NOTE	3	3	3						

			
<small>PROPRIETARY INFORMATION</small>			
<small>TITLE:</small> <b>PACKAGE OUTLINE, 16L QFN, 3x3x0.80 MM</b>			
<small>APPROVAL</small> 	<small>DOCUMENT CONTROL NO.</small> <b>21-0136</b>	<small>REV.</small> <b>A</b>	<b>2/2</b>