



QUICKSWITCH® PRODUCTS HIGH-SPEED CMOS SYNCHRO- SWITCH™ QUAD 2:1 MUX/DEMUX WITH ACTIVE TERMINATORS

IDTQS3ST257

FEATURES:

- Enhanced N channel FET with no inherent diode to Vcc
- Bidirectional signal flow
- Flow-through pinout
- Zero propagation delay, zero ground bounce
- 4 banks of 2:1 Mux/Demux
- Port select synchronous to the clock
- Clock enable and Asynchronous switch enable
- "Bus-hold" terminators on the Demux side
- Undershoot clamp diodes on all switch and control pins
- Asynchronous SEL option
- Break-before-make feature
- Available in QSOP Package
- Bus-hold eliminates floating bus lines and reduces static power consumption

APPLICATIONS:

- Video, audio, graphics switching, muxing
- Bus funneling
- Voltage translation

DESCRIPTION:

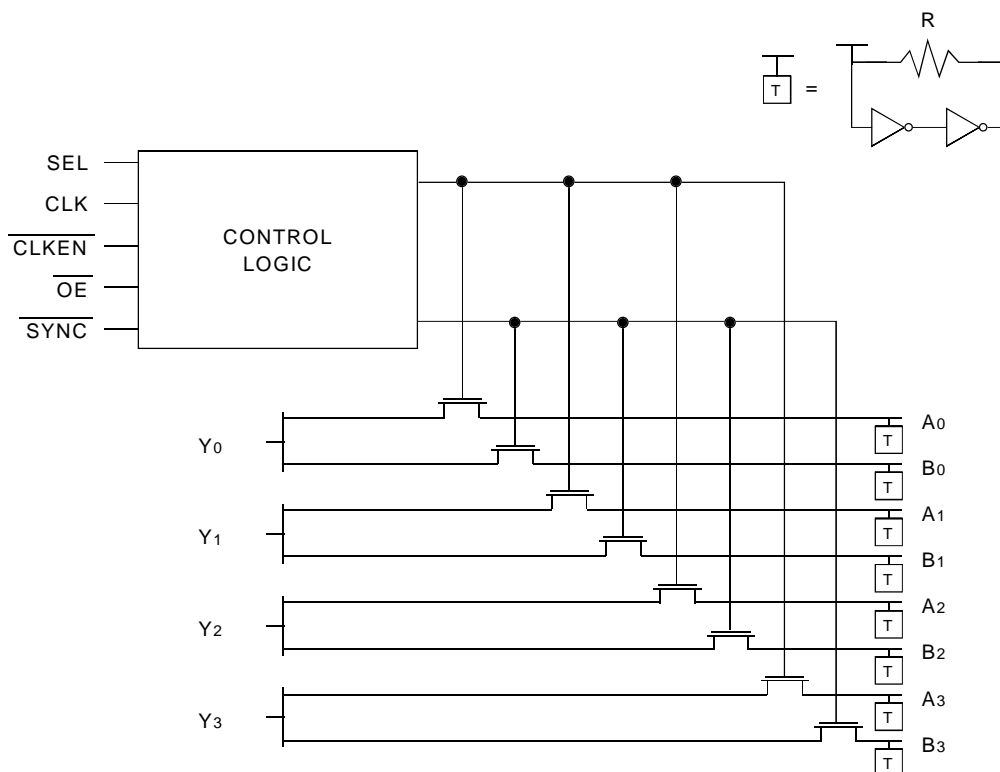
The QS3ST257 is a high-speed CMOS Quad 2:1 multiplexer/demultiplexer with active terminators (bus-hold circuits) on the demux side. Port selection and connection, controlled by SEL signals, can be either asynchronous or synchronous. In the synchronous mode, the A or B port to Y port connection is updated on the rising edge of the input clock CLK. Once the port-to-port connection is made, data flow can be bi-directional with a typical 250ps propagation delay through the switch. Clock Enable, overriding Asynchronous Enable, and Asynchronous Select controls provide additional design flexibility.

The bus-hold circuits latch the last data driven on the demux side, providing infinite hold time and glitch-free signal transitions. Synchronous controls and bus-hold ease timing constraints in many high speed data mux/demux applications, such as bank interleaving.

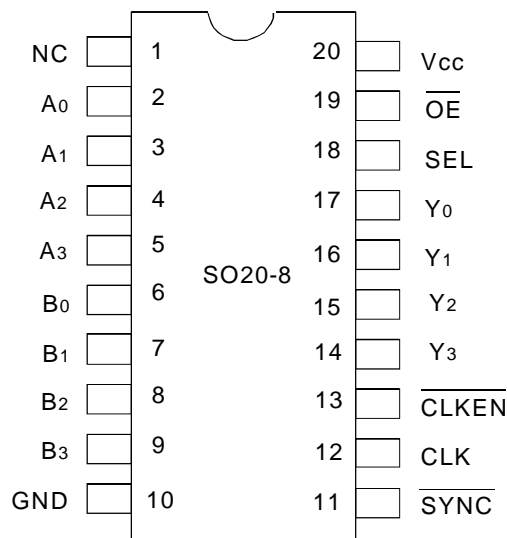
QuickSwitch Mux/Demux devices provide an order of magnitude faster speed than equivalent logic devices.

The QS3ST257 is characterized for operation at -40°C to +85°C.

FUNCTIONAL BLOCK DIAGRAM



PIN CONFIGURATION



QSOP
TOP VIEW

ABSOLUTE MAXIMUM RATINGS ⁽¹⁾

Symbol	Description	Max.	Unit
V _{TERM} ⁽²⁾	Supply Voltage to Ground	- 0.5 to +7	V
V _{TERM} ⁽³⁾	DC Switch Voltage V _s	- 0.5 to +7	V
V _{TERM} ⁽³⁾	DC Input Voltage V _{IN}	- 0.5 to +7	V
V _{AC}	AC Input Voltage (pulse width ≤20ns)	-3	V
I _{OUT}	DC Output Current	120	mA
P _{MAX}	Maximum Power Dissipation (T _A = 85°C)	.82	W
T _{STG}	Storage Temperature	- 65 to +150	°C

NOTES:

- Stresses greater than those listed under ABSOLUTE MAXIMUM RATINGS may cause permanent damage to the device. This is a stress rating only and functional operation of the device at these or any other conditions above those indicated in the operational sections of this specification is not implied. Exposure to absolute maximum rating conditions for extended periods may affect reliability.
- V_{cc} Terminals.
- All terminals except V_{cc}.

CAPACITANCE

(T_A = +25°C, f = 1.0MHz, V_{IN} = 0V, V_{OUT} = 0V)

Pins		Typ.	Max. ⁽¹⁾	Unit
Control Inputs		4	5	pF
Quickswitch Channels (Switch OFF)	Demux	5	7	pF
	Mux	7	9	pF

NOTE:

- This parameter is guaranteed but not production tested.

PIN DESCRIPTION

Pin Names	I/O	Description
A ₀ - A ₃	I/O	Demux Port A
B ₀ - B ₃	I/O	Demux Port B
Y ₀ - Y ₃	I/O	Mux Port Y
SEL	I	Select Input
CLK	I	Clock
CLKEN	I	Clock Enable
OE	I	Output Enable
SYNC	I	Synchronous Enable

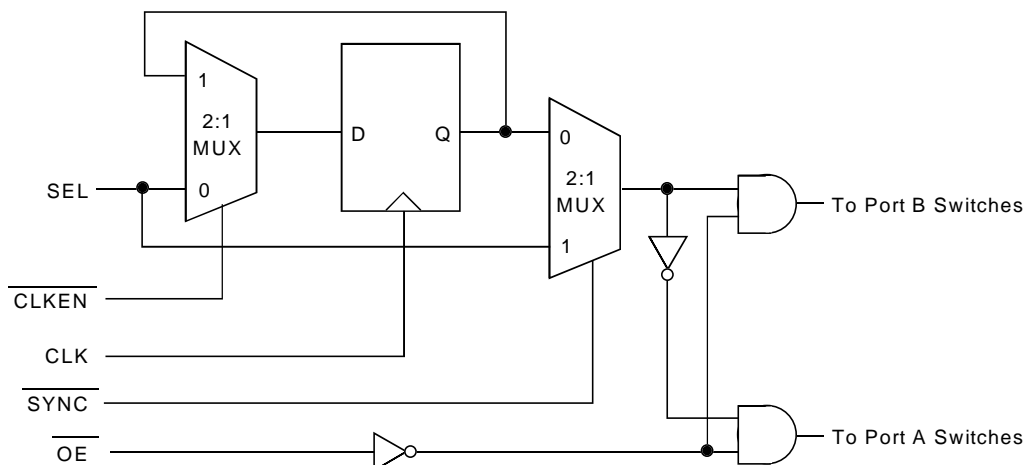
FUNCTION TABLE⁽¹⁾

Control Inputs					Port Status				Function
$\overline{\text{SYNC}}$	$\overline{\text{OE}}$	CLKn	$\overline{\text{CLKEN}}$	SEL	Y ₀	Y ₁	Y ₂	Y ₃	
L	L	↑	L	L	A ₀	A ₁	A ₂	A ₃	Select Port A
L	L	↑	L	H	B ₀	B ₁	B ₂	B ₃	Select Port B
L	H	↑	L	X	No change in Mux connection				Hold Previous Data ⁽²⁾ (Switch OFF)
L	L	↑	H	X	No change in Mux connection				Hold Previous Mux connection ⁽³⁾ (Switch ON)
L	H	↑	H	X	No change in Mux connection				Hold Previous Data ⁽⁴⁾ (Switch OFF)
H	L	X	X	L	A ₀	A ₁	A ₂	A ₃	Select Port A
H	L	X	X	H	B ₀	B ₁	B ₂	B ₃	Select Port B
H	H	X	X	X	No change in Mux connection				Hold Previous Data ⁽²⁾ (Switch OFF)

NOTES:

1. H = HIGH Voltage Level
L = LOW Voltage Level
X = Don't Care
↑ = Low-to-High Transition
2. Mux switches are turned off and the terminators (last value latches) hold the previous data state. The port connection can be changed by the SEL input.
3. The contents of the "Mux select register" are unchanged and the previous Mux connection is unchanged. The output (Mux port) data state will depend on the present data state of the input (Demux port).
4. The contents of the "Mux select register" are unchanged and the last value latches hold the previous data state.

CONTROL LOGIC



DC ELECTRICAL CHARACTERISTICS OVER OPERATING RANGE

Following Conditions Apply Unless Otherwise Specified:

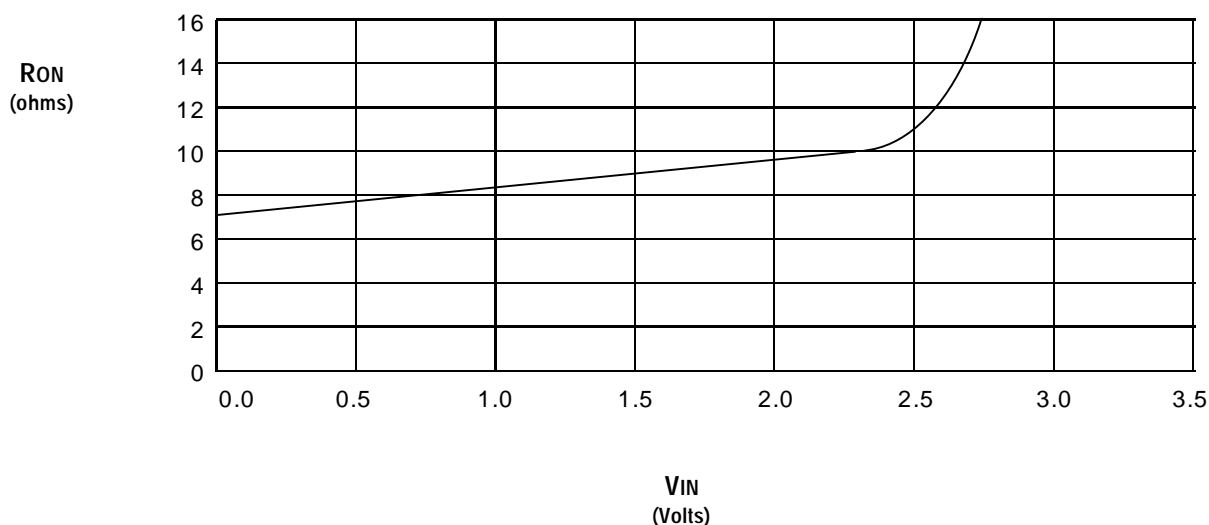
Industrial: $T_A = -40^{\circ}\text{C}$ to $+85^{\circ}\text{C}$, $V_{CC} = 5.0\text{V} \pm 10\%$

Symbol	Parameter	Test Conditions	Min.	Typ. ⁽¹⁾	Max.	Unit
V_{IH}	Input HIGH Voltage	Guaranteed Logic HIGH for Control Pins	2	—	—	V
V_{IL}	Input LOW Voltage	Guaranteed Logic LOW for Control Pins	—	—	0.8	V
I_{IN}	Input Leakage Current (Control Inputs)	$0\text{V} \leq V_{IN} \leq V_{CC}$	—	0.01	± 1	μA
R_{ON}	Switch On Resistance	$V_{CC} = \text{Min.}, V_{IN} = 0\text{V}, I_{ON} = 30\text{mA}$	—	7	9	Ω
		$V_{CC} = \text{Min.}, V_{IN} = 2.4\text{V}, I_{ON} = 15\text{mA}$	—	10	13	
I_{BHL}	Input Hold Current ^(2,3) (A or B port)	$V_{CC} = \text{Min.}$	$V_{IN} = 0.8\text{V}$	60	—	μA
I_{BHH}		Switch OFF	$V_{IN} = 2\text{V}$	— 60	—	
I_{BH}	Input Current ⁽⁴⁾ A and B port	$V_{CC} = \text{Max.}$	$V_{IN} = 0\text{V}$ or V_{CC}	—	—	μA
			$0.8 < V_{IN} < 2\text{V}$	—	—	

NOTES:

- Typical values are at $V_{CC} = 5.0\text{V}$, $T_A = 25^{\circ}\text{C}$.
- I_{BHL} is the minimum sustaining “sink” current at the input for $V_{IN} = 0.8\text{V}$. This parameter signifies the latching capability of the bus-hold circuit in logic LOW state.
- I_{BHH} is the minimum sustaining “source” current at the input for $V_{IN} = 2\text{V}$. This parameter signifies the latching capability of the bus-hold circuit in logic HIGH state.
- I_{BH} is the magnitude of the input current specified under two conditions:
 - Input voltage at GND or V_{CC} . This indicates the input current under steady-state condition.
 - Input voltage between 0.8V and 2V (TTL input threshold range). This indicates the maximum input current during transient condition. The driver connected to the input must overcome this current requirement in order to switch the logic state of the bus-hold circuit.

TYPICAL ON RESISTANCE vs V_{IN} AT $V_{CC} = 5\text{V}$



POWER SUPPLY CHARACTERISTICS

Symbol	Parameter	Test Conditions ⁽¹⁾	Max.	Unit
I _{CCQ}	Quiescent Power Supply Current	V _{CC} = Max., V _{IN} = GND or V _{CC} , f = 0	3	μA
ΔI _{CC}	Power Supply Current per Control Input HIGH ⁽²⁾	V _{CC} = Max., V _{IN} = 3.4V, f = 0	1.5	mA
I _{CCD}	Dynamic Power Supply Current per MHz ⁽³⁾	V _{CC} = Max., A/B and Y pins open Control Input Toggling at 50% Duty Cycle	0.25	mA/MHz

NOTES:

- For conditions shown as Min. or Max., use the appropriate values specified under DC Electrical Characteristics.
- Per TLL driven input (V_{IN} = 3.4V, control inputs only). A/B and Y pins do not contribute to ΔI_{CC}.
- This current applies to the control inputs only and represents the current required to switch internal capacitance at the specified frequency. The A/B and Y inputs generate no significant AC or DC currents as they transition. This parameter is guaranteed but not production tested.

SWITCHING CHARACTERISTICS OVER OPERATING RANGE

T_A = -40°C to +85°C, V_{CC} = 5.0V ± 10%

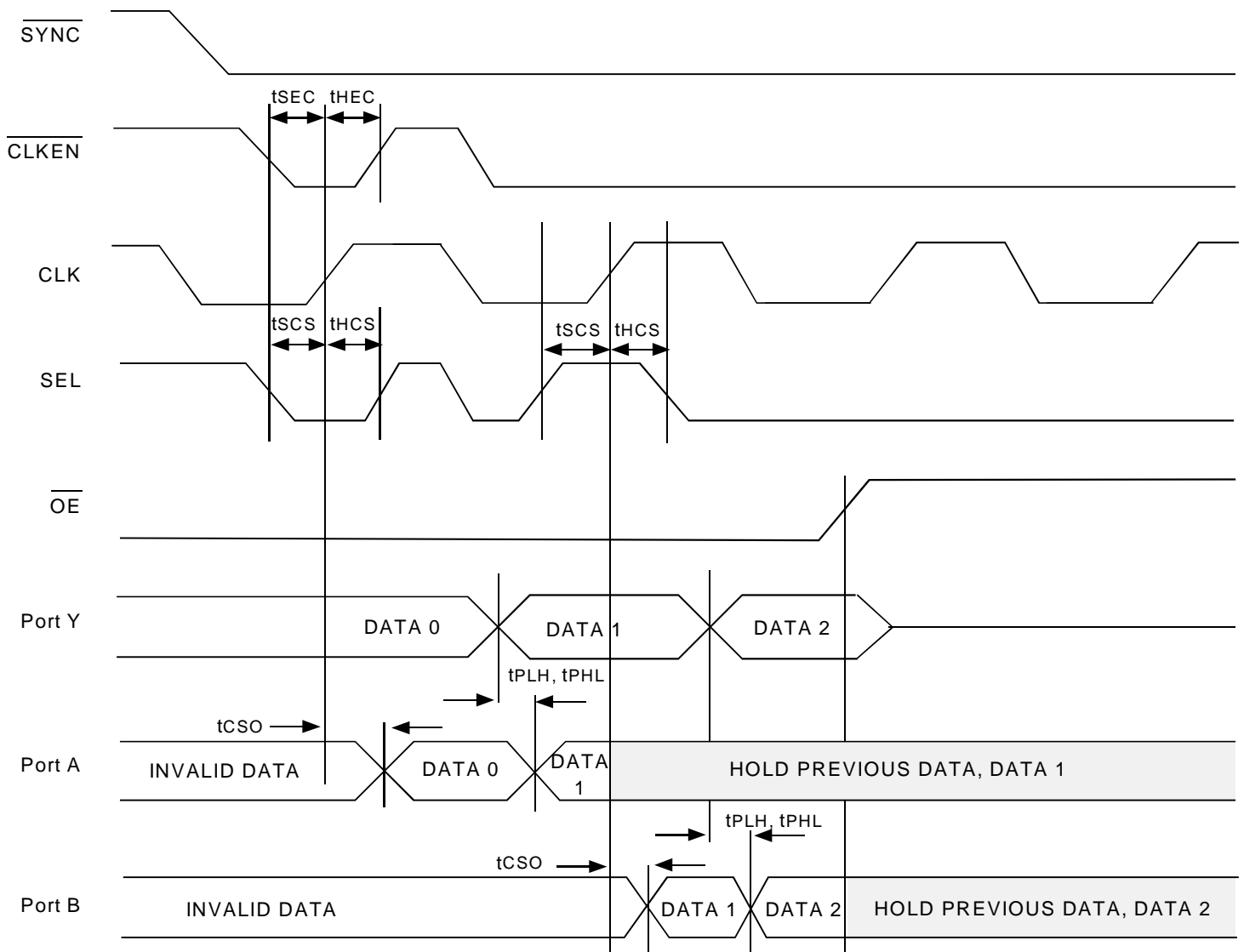
C_{LOAD} = 50pF, R_{LOAD} = 500Ω unless otherwise noted.

Symbol	Parameter	Min.	Typ.	Max.	Unit
t _{PLH} t _{PHL}	Data Propagation Delays ^(1,2) A/B to Y, Y to A/B	—	0.25	—	ns
t _{SEC}	Clock Enable to Clock Setup Time	3	—	—	ns
t _{HEC}	Clock Enable to Clock Hold Time	0	—	—	ns
t _{CSO}	Clock to A,B Switch Turn-On Delay ⁽³⁾	0.5	—	7	ns
t _{ASO}	Asynchronous Select to A,B Switch Turn-On Delay ⁽³⁾	0.5	—	7	ns
t _w	Clock Pulse Width (High)	3	—	—	ns
t _{SCS}	SEL to Clock Setup Time	3	—	—	ns
t _{HCS}	SEL to Clock Hold Time	0	—	—	ns
t _{PZL} t _{PZH}	Asynchronous Enable to Switch Turn-On Delay ⁽³⁾	1.5	—	5.2	ns
t _{PLZ} t _{PHZ}	Asynchronous Enable to Switch Turn-Off Delay ^(1,3)	1.5	—	4.8	ns

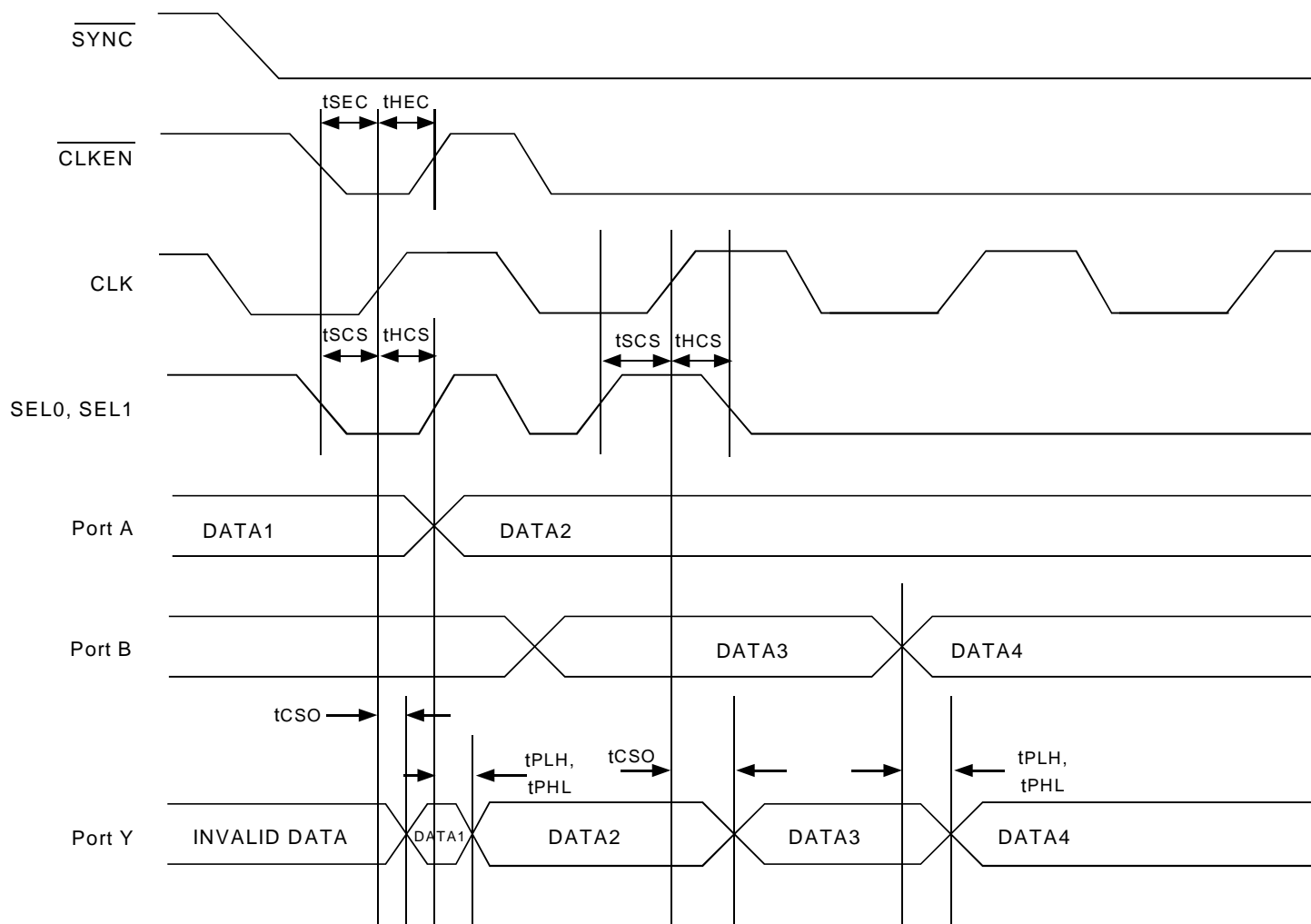
NOTES:

- This parameter is guaranteed but not production tested.
- The bus switch contributes no propagation delay other than the RC delay of the ON resistance of the switch and the load capacitance. The time constant for the switch alone is of the order of 0.25ns for C_L = 50pF. Since this time constant is much smaller than the rise and fall times of typical driving signals, it adds very little propagation delay to the system. Propagation delay of the bus switch, when used in a system, is determined by the driving circuit on the driving side of the switch and its interaction with the load on the driven side.
- Minimums guaranteed but not production tested.

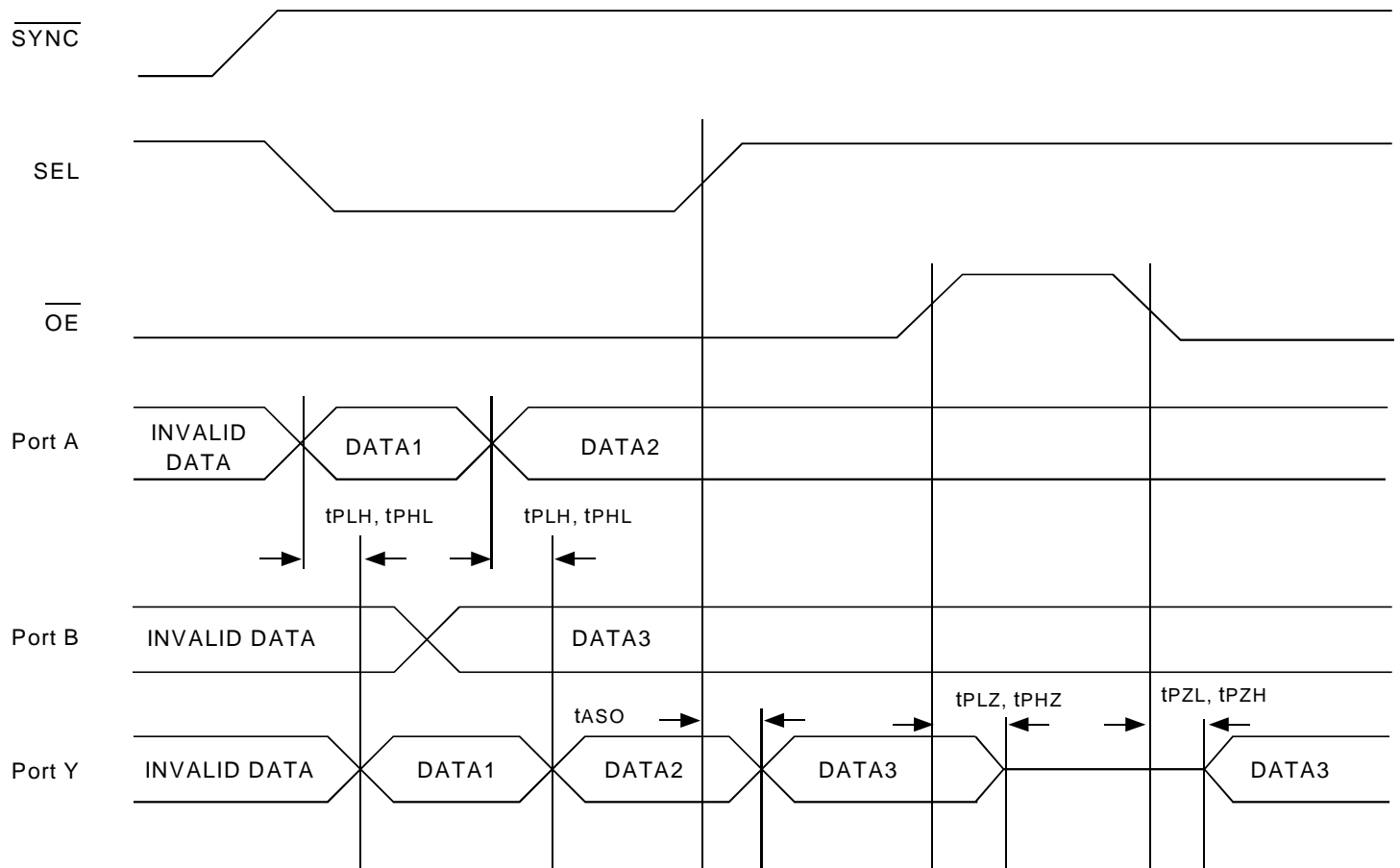
TIMING WAVEFORMS - SYNCHRONOUS MODE, DEMUX FUNCTION



TIMING WAVEFORMS - SYNCHRONOUS MODE, MUX FUNCTION



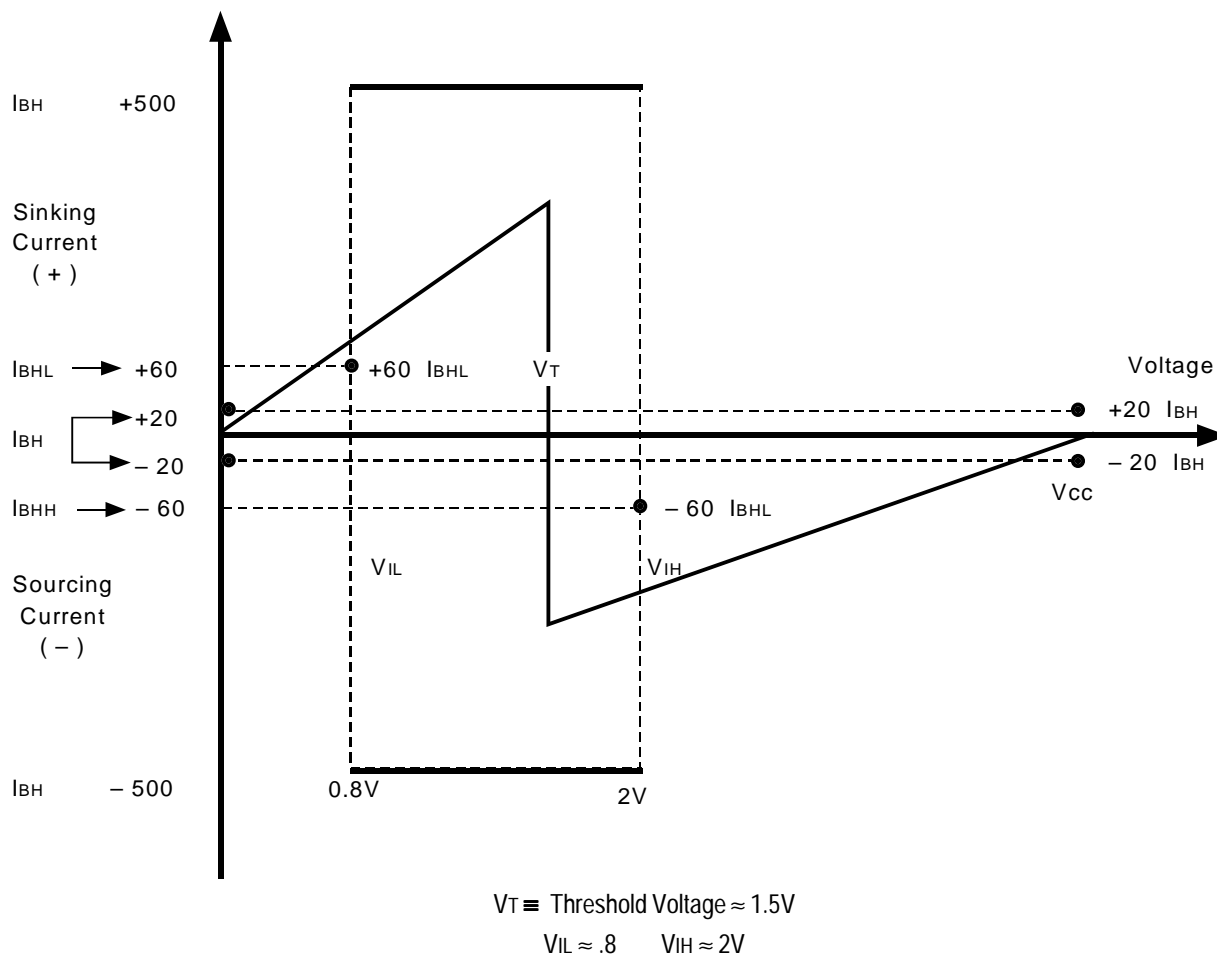
TIMING WAVEFORMS - ASYNCHRONOUS MODE, MUX FUNCTION



ACTIVE TERMINATOR OR “BUS-HOLD” CIRCUIT

The Active Terminator circuit, also known as the bus-hold circuit, is configured as a “weak latch” with positive feedback. When connected to a TTL or CMOS input port, the bus-hold circuit holds the last logic state at the input when the input is “disconnected” from the driver. When the output of a device connected to such an input attempts a logic level transition, it will overdrive the bus-hold circuit. The primary benefit of a bus-hold circuit is that it prevents CMOS inputs from floating, a situation which should be avoided to prevent spurious switching of inputs and unnecessary power dissipation. Bus-hold is a better solution than the traditional approach of using resistive termination to V_{CC} or GND to prevent bus floating, because the bus-hold circuit does not consume any static power.

V-I CHARACTERISTICS OF BUS-HOLD CIRCUIT



This figure shows the input V-I characteristics of a typical bus-hold implementation. The input characteristics resemble a resistor. As the input voltage is increased from 0 volts, the input “sink” current increases linearly. When the TTL threshold of the circuit is reached (typically 1.5 volts), the latch changes the logic state due to positive feedback and the direction of the current is reversed. As the input voltage is further increased towards V_{CC} , the input “source” current begins to decrease, reaching the lowest level at $V_{IN} = V_{CC}$.

ORDERING INFORMATION

IDTQS	XXXXX	XX	X		
Device Type	Package	Process			
			Blank	Industrial (-40°C to +85°C)	
			Q	Quarter Size Small Outline Package (SO20-8)	
			3ST257	High Speed CMOS SynchroSwitch Quad 2:1 Mux/Demux with Active Terminators	



CORPORATE HEADQUARTERS
 2975 Stender Way
 Santa Clara, CA 95054

for SALES:
 800-345-7015 or 408-727-6116
 fax: 408-492-8674
www.idt.com*

*To search for sales office near you, please click the sales button found on our home page or dial the 800# above and press 2.
 The IDT logo, QuickSwitch, and SynchroSwitch are registered trademarks of Integrated Device Technology, Inc.