

REPETITIVE AVALANCHE AND dv/dt RATED HEXFET® TRANSISTOR

IRHM7250SE

N-CHANNEL SINGLE EVENT EFFECT (SEE) RAD HARD

200Volt, 0.10w, (SEE) RAD HARD HEXFET

International Rectifier's (SEE) RAD HARD technology HEXFETs demonstrate immunity to SEE failure. Additionally, under **identical** pre- and post-irradiation test conditions, International Rectifier's RAD HARD HEXFETs retain **identical** electrical specifications up to 1×10^5 Rads (Si) total dose. No compensation in gate drive circuitry is required. These devices are also capable of surviving transient ionization pulses as high as 1×10^{12} Rads (Si)/Sec, and return to normal operation within a few microseconds. Since the SEE process utilizes International Rectifier's patented HEXFET technology, the user can expect the highest quality and reliability in the industry.

RAD HARD HEXFET transistors also feature all of the well-established advantages of MOSFETs, such as voltage control, very fast switching, ease of paralleling and temperature stability of the electrical parameters. They are well-suited for applications such as switching power supplies, motor controls, inverters, choppers, audio amplifiers and high-energy pulse circuits in space and weapons environments.

Product Summary

| Part Number | BV _{DSS} | R _{DS(on)} | I _D |
|-------------|-------------------|---------------------|----------------|
| IRHM7250SE | 200V | 0.10w | 26A |

Features:

- Radiation Hardened up to 1×10^5 Rads (Si)
- Single Event Burnout (SEB) Hardened
- Single Event Gate Rupture (SEGR) Hardened
- Gamma Dot (Flash X-Ray) Hardened
- Neutron Tolerant
- Identical Pre- and Post-Electrical Test Conditions
- Repetitive Avalanche Rating
- Dynamic dv/dt Rating
- Simple Drive Requirements
- Ease of Paralleling
- Hermetically Sealed
- Electrically Isolated
- Ceramic Eyelets

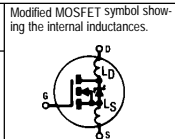
Absolute Maximum Ratings

Pre-Irradiation

| | Parameter | IRHM7250SE | Units |
|--|---------------------------------|---|-------|
| I _D @ V _{GS} = 12V, T _C = 25°C | Continuous Drain Current | 26 | A |
| I _D @ V _{GS} = 12V, T _C = 100°C | Continuous Drain Current | 16 | |
| I _{DM} | Pulsed Drain Current ① | 104 | |
| P _D @ T _C = 25°C | Max. Power Dissipation | 150 | W |
| | Linear Derating Factor | 1.2 | W/°C |
| V _{GS} | Gate-to-Source Voltage | ±20 | V |
| EAS | Single Pulse Avalanche Energy ② | 500 | mJ |
| I _{AR} | Avalanche Current ① | 26 | A |
| EAR | Repetitive Avalanche Energy ① | 15 | mJ |
| dv/dt | Peak Diode Recovery dv/dt ③ | 5.9 | V/ns |
| T _J | Operating Junction | -55 to 150 | °C |
| T _{STG} | Storage Temperature Range | | |
| | Lead Temperature | 300 (0.063 in. (1.6mm) from case for 10 sec.) | |
| | Weight | 9.3 (typical) | |

Electrical Characteristics @ T_j = 25°C (Unless Otherwise Specified)

| | Parameter | Min | Typ | Max | Units | Test Conditions |
|-------------------------------------|--|-----|------|-------|-------|--|
| BV _{DSS} | Drain-to-Source Breakdown Voltage | 200 | — | — | V | V _{GS} = 0V, I _D = 1.0mA |
| dBV _{DSS} /dT _J | Temperature Coefficient of Breakdown Voltage | — | 0.26 | — | V/°C | Reference to 25°C, I _D = 1.0mA |
| R _{DS(on)} | Static Drain-to-Source On-State Resistance | — | — | 0.10 | W | V _{GS} = 12V, I _D = 16A ④ |
| | | — | — | 0.105 | | V _{GS} = 12V, I _D = 26A |
| V _{GS(th)} | Gate Threshold Voltage | 2.5 | — | 4.5 | V | V _{DS} = V _{GS} , I _D = 1.0mA |
| g _{fs} | Forward Transconductance | 7.5 | — | — | S (M) | V _{DS} > 15V, I _{DS} = 16A ④ |
| I _{DSS} | Zero Gate Voltage Drain Current | — | — | 25 | mA | V _{DS} = 0.8 x Max Rating, V _{GS} = 0V |
| | | — | — | 250 | | V _{DS} = 0.8 x Max Rating V _{GS} = 0V, T _J = 125°C |
| I _{GSS} | Gate-to-Source Leakage Forward | — | — | 100 | nA | V _{GS} = 20V |
| I _{GSS} | Gate-to-Source Leakage Reverse | — | — | -100 | | V _{GS} = -20V |
| Q _g | Total Gate Charge | — | — | 180 | nC | V _{GS} = 12V, I _D = 26A |
| Q _{gs} | Gate-to-Source Charge | — | — | 35 | | V _{DS} = Max Rating x 0.5 |
| Q _{gd} | Gate-to-Drain ('Miller') Charge | — | — | 83 | | |
| t _{d(on)} | Turn-On Delay Time | — | — | 33 | ns | V _{DD} = 100V, I _D = 26A, R _G = 2.35W |
| t _r | Rise Time | — | — | 140 | | |
| t _{d(off)} | Turn-Off Delay Time | — | — | 140 | | |
| t _f | Fall Time | — | — | 140 | | |
| L _D | Internal Drain Inductance | — | 8.7 | — | nH | Measured from drain lead, 6mm (0.25 in) from package to center of die. |
| L _S | Internal Source Inductance | — | 8.7 | — | | Measured from source lead, 6mm (0.25 in) from package to source bonding pad. |
| C _{iss} | Input Capacitance | — | 3100 | — | pF | V _{GS} = 0V, V _{DS} = 25V f = 1.0MHz |
| C _{oss} | Output Capacitance | — | 990 | — | | |
| C _{rss} | Reverse Transfer Capacitance | — | 380 | — | | |



Source-Drain Diode Ratings and Characteristics

| | Parameter | Min | Typ | Max | Units | Test Conditions |
|-----------------|--|--|-----|-----|-------|---|
| I _S | Continuous Source Current (Body Diode) | — | — | 26 | A | Modified MOSFET symbol showing the integral reverse p-n junction rectifier. |
| I _{SM} | Pulse Source Current (Body Diode) ① | — | — | 104 | | |
| V _{SD} | Diode Forward Voltage | — | — | 1.9 | V | T _j = 25°C, I _S = 26A, V _{GS} = 0V ④ |
| t _{rr} | Reverse Recovery Time | — | — | 550 | ns | T _j = 25°C, I _F = 26A, di/dt ≤ 100A/ms |
| Q _{RR} | Reverse Recovery Charge | — | — | 8.8 | mC | V _{DD} ≤ 50V ④ |
| t _{on} | Forward Turn-On Time | Intrinsic turn-on time is negligible. Turn-on speed is substantially controlled by L _S + L _D . | | | | |

Thermal Resistance

| | Parameter | Min | Typ | Max | Units | Test Conditions |
|-------------------|---------------------|-----|------|------|-------|----------------------|
| R _{thJC} | Junction-to-Case | — | — | 0.83 | °C/W | Typical socket mount |
| R _{thCS} | Case-to-Sink | — | 0.21 | — | | |
| R _{thJA} | Junction-to-Ambient | — | — | 48 | | |

Radiation Performance of Rad Hard HEXFETs

International Rectifier Radiation Hardened HEXFETs are tested to verify their hardness capability. The hardness assurance program at International Rectifier comprises 3 radiation environments.

Every manufacturing lot is tested in a low dose rate (total dose) environment per MIL-STD-750, test method 1019 condition A. International Rectifier has imposed a standard gate condition of 12 volts per note 5 and a V_{DS} bias condition equal to 80% of the device rated voltage per note 6. Post-irradiation limits of the devices irradiated to 1×10^5 Rads (Si) are presented in Table 1, column 1, IRHM7250SE. The values in Table 1 will be met for either of the two low

dose rate test circuits that are used. Both pre- and post-irradiation performance are tested and specified using the same drive circuitry and test conditions in order to provide a direct comparison. It should be noted that at a radiation level of 1×10^5 Rads (Si) the only parameter limit change is $V_{GS_{Th}}$ minimum.

High dose rate testing may be done on a special request basis using a dose rate up to 1×10^{12} Rads (Si)/Sec (See Table 2).

International Rectifier radiation hardened HEXFETs have been characterized in heavy ion Single Event Effects (SEE) environments. Single Event Effects characterization is shown in Table 3.

Table 1. Low Dose Rate ⑤ ⑥

| | | IRHM7250SE | | Units | Test Conditions ⑧ |
|---------------|---|----------------|------|----------|--|
| | | 100K Rads (Si) | | | |
| Parameter | | Min | Max | | |
| BV_{DSS} | Drain-to-Source Breakdown Voltage | 200 | — | V | $V_{GS} = 0V, I_D = 1.0mA$ |
| $V_{GS(th)}$ | Gate Threshold Voltage ④ | 2.0 | 4.5 | | $V_{GS} = V_{DS}, I_D = 1.0mA$ |
| I_{GSS} | Gate-to-Source Leakage Forward | — | 100 | nA | $V_{GS} = 20V$ |
| I_{GSS} | Gate-to-Source Leakage Reverse | — | -100 | | $V_{GS} = -20V$ |
| I_{DSS} | Zero Gate Voltage Drain Current | — | 50 | μA | $V_{DS}=0.8 \times \text{Max Rating}, V_{GS}=0V$ |
| $R_{DS(on)1}$ | Static Drain-to-Source ④ On-State Resistance One | — | 0.10 | ω | $V_{GS} = 12V, I_D = 16A$ |
| V_{SD} | Diode Forward Voltage ④ | — | 1.9 | V | $T_C = 25^\circ C, I_S = 26A, V_{GS} = 0V$ |

Table 2. High Dose Rate ⑦

| | Parameter | 10 ¹¹ Rads (Si)/sec | | | 10 ¹² Rads (Si)/sec | | | Units | Test Conditions |
|-----------|-------------------------|--------------------------------|-----|-----|--------------------------------|-----|-----|--------------|--|
| | | Min | Typ | Max | Min | Typ | Max | | |
| V_{DSS} | Drain-to-Source Voltage | — | — | 160 | — | — | 160 | V | Applied drain-to-source voltage during gamma-dot |
| I_{PP} | | — | 15 | — | — | 15 | — | A | Peak radiation induced photo-current |
| di/dt | | — | — | 160 | — | — | 8.0 | A/ μ sec | Rate of rise of photo-current |
| L_1 | | 1.0 | — | — | 20 | — | — | μH | Circuit inductance required to limit di/dt |

Table 3. Single Event Effects

| Ion | LET (Si) (MeV/mg/cm ²) | Fluence (ions/cm ²) | Range (μm) | V_{DS} Bias (V) | V_{GS} Bias (V) |
|-----|---------------------------------------|------------------------------------|----------------------|----------------------|----------------------|
| Cu | 28 | 3×10^5 | ~43 | -200 | -5 |

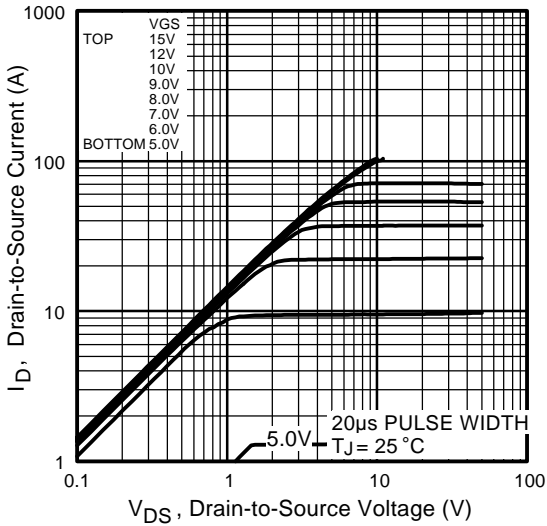


Fig 1. Typical Output Characteristics

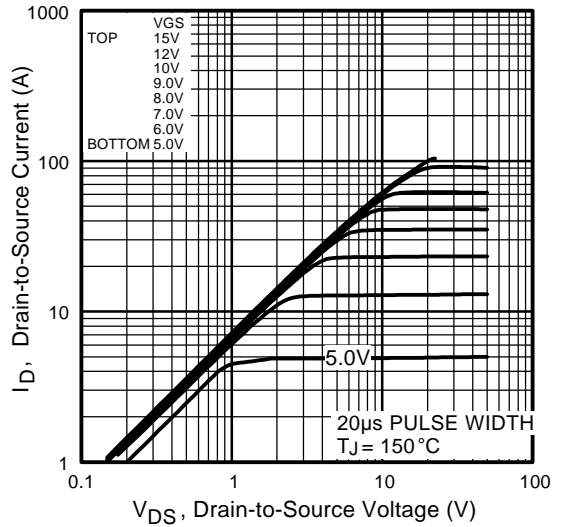


Fig 2. Typical Output Characteristics

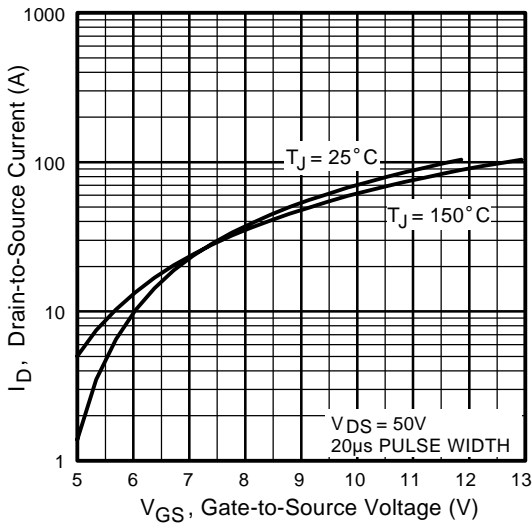


Fig 3. Typical Transfer Characteristics

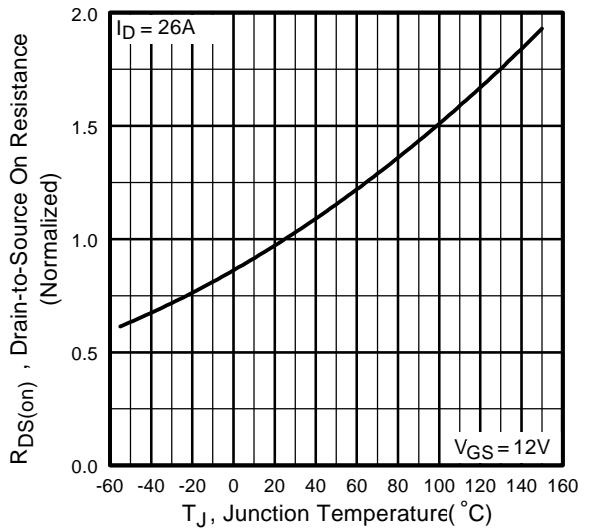


Fig 4. Normalized On-Resistance Vs. Temperature

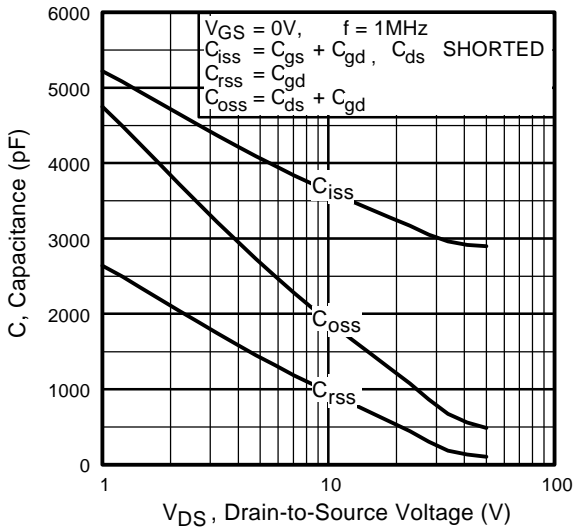


Fig 5. Typical Capacitance Vs. Drain-to-Source Voltage

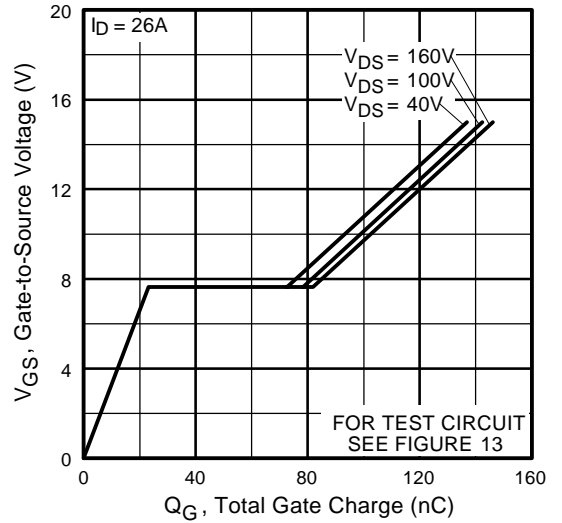


Fig 6. Typical Gate Charge Vs. Gate-to-Source Voltage

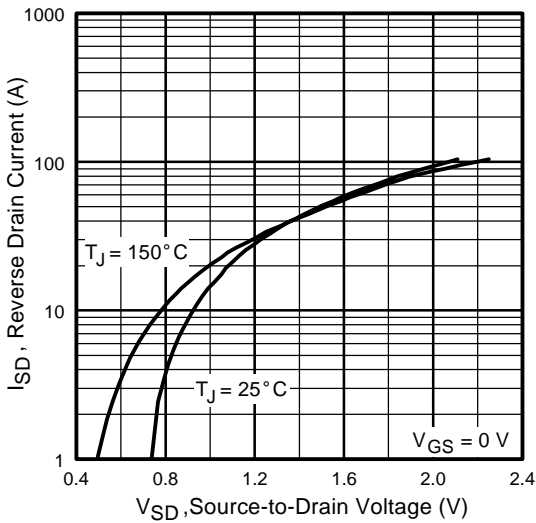


Fig 7. Typical Source-Drain Diode Forward Voltage

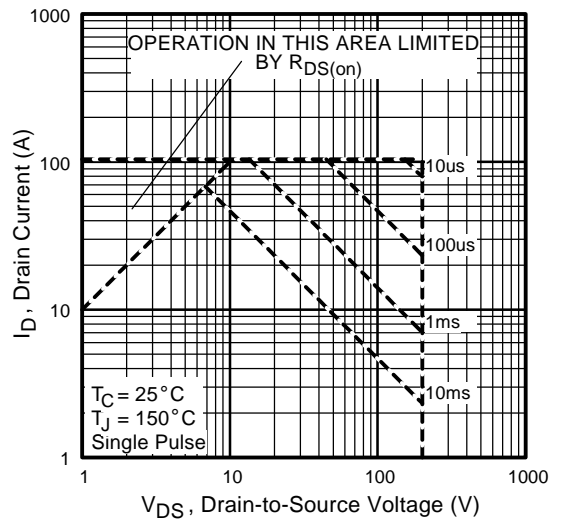


Fig 8. Maximum Safe Operating Area

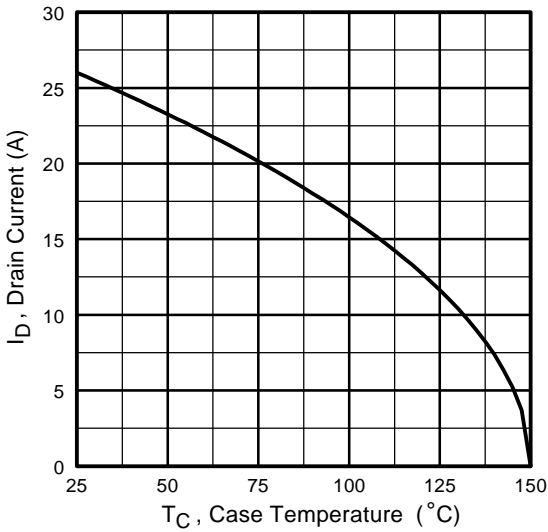


Fig 9. Maximum Drain Current Vs. Case Temperature

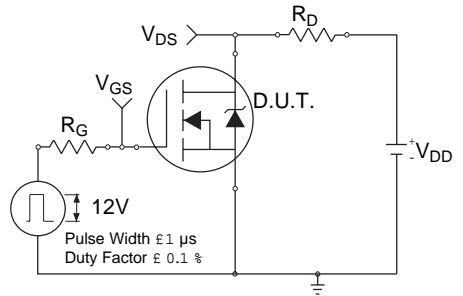


Fig 10a. Switching Time Test Circuit

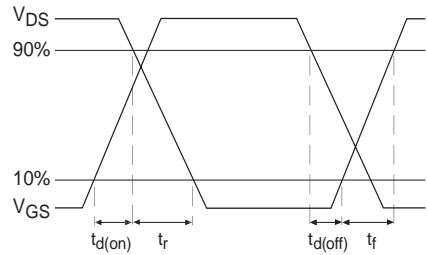


Fig 10b. Switching Time Waveforms

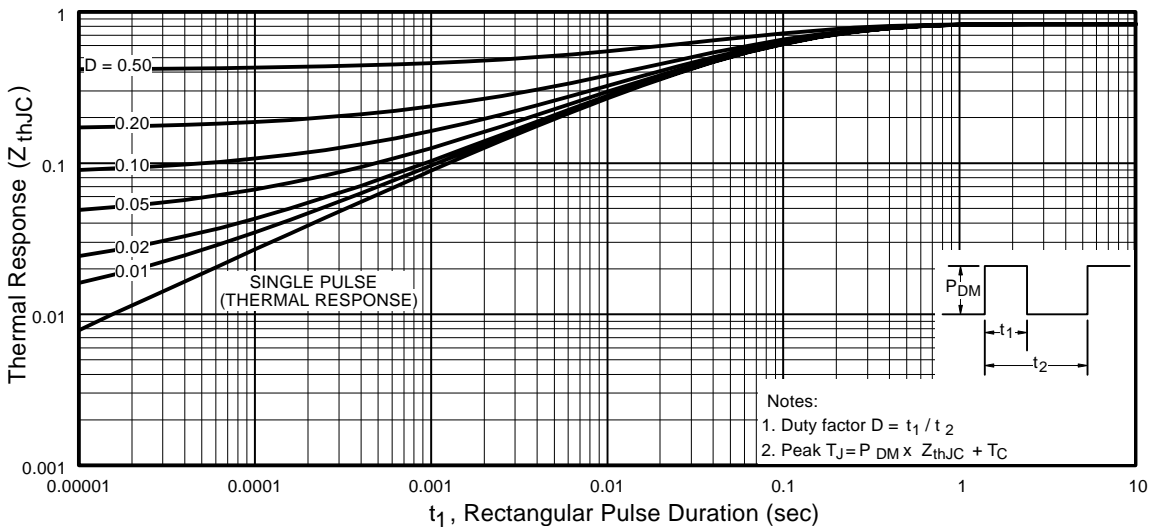


Fig 11. Maximum Effective Transient Thermal Impedance, Junction-to-Case

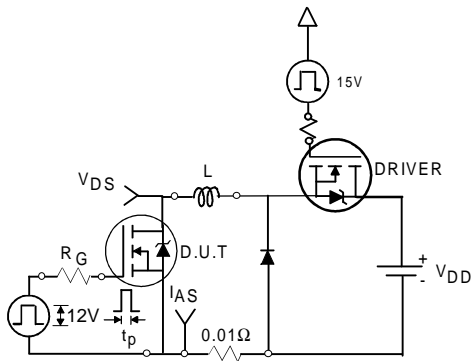


Fig 12a. Unclamped Inductive Test Circuit

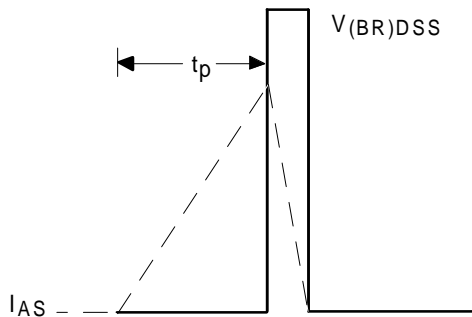


Fig 12b. Unclamped Inductive Waveforms

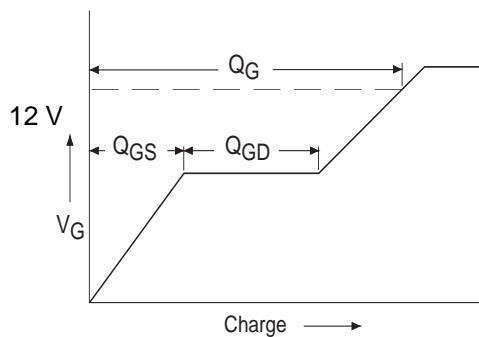


Fig 13a. Basic Gate Charge Waveform

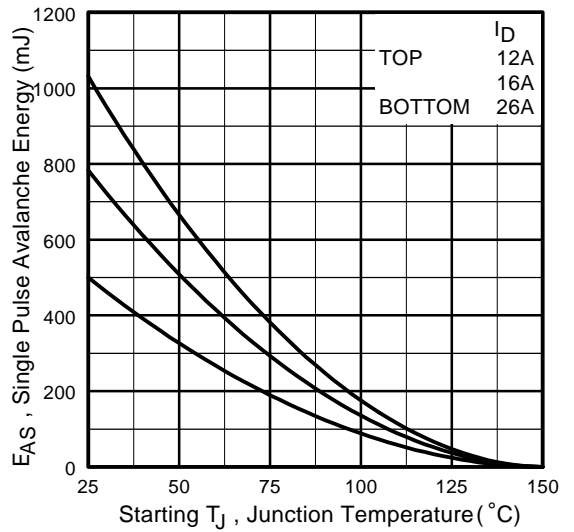


Fig 12c. Maximum Avalanche Energy Vs. Drain Current

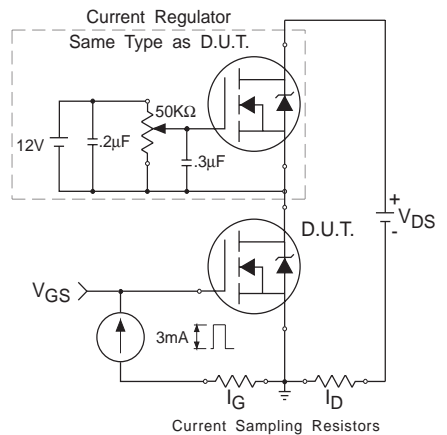
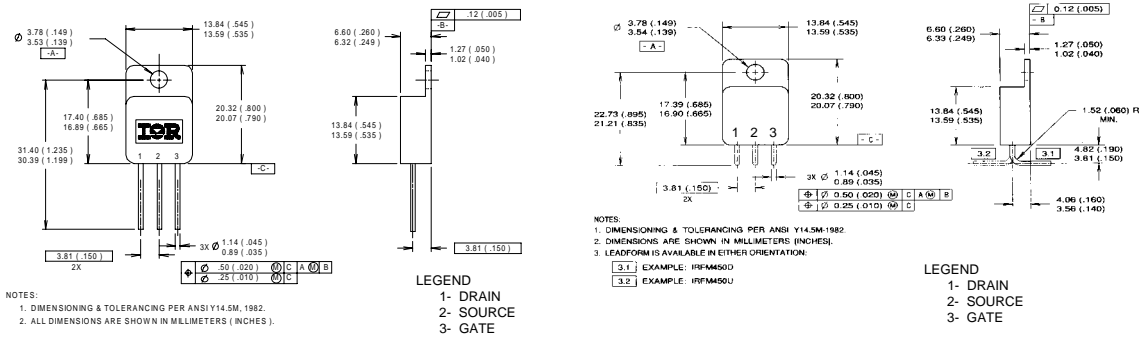


Fig 13b. Gate Charge Test Circuit

- ① Repetitive Rating; Pulse width limited by maximum junction temperature. Refer to current HEXFET reliability report.
- ② @ Starting $T_J = 25^\circ\text{C}$,
 $E_{AS} = [0.5 * L * (I_L^2)]$, $V_{DD} = 50\text{V}$
 Peak $I_L = 26\text{A}$, $V_{GS} = 12\text{V}$, $25 \leq R_G \leq 200\Omega$
- ③ $I_{SD} \leq 26\text{A}$, $di/dt \leq 400\text{A/ms}$,
 $V_{DD} \leq BV_{DSS}$, $T_J \leq 150^\circ\text{C}$
 Suggested $R_G = 2.35\Omega$
- ④ Pulse width $\leq 300\text{ms}$; Duty Cycle $\leq 2\%$

- ⑤ **Total Dose Irradiation with V_{GS} Bias.**
 12 volt V_{GS} applied and $V_{DS} = 0$ during irradiation per MIL-STD-750, method 1019, condition A.
- ⑥ **Total Dose Irradiation with V_{DS} Bias.**
 $V_{DS} = 0.8$ rated BV_{DSS} (pre-irradiation) applied and $V_{GS} = 0$ during irradiation per MIL-STD -750, method 1019, condition A.
- ⑦ This test is performed using a flash x-ray source operated in the e-beam mode (energy $\sim 2.5\text{ MeV}$), 30 nsec pulse.
- ⑧ All Pre-Irradiation and Post-Irradiation test conditions are **identical** to facilitate direct comparison for circuit applications.

Case Outline and Dimensions — TO-254AA



Conforms to JEDEC Outline TO-254AA
 Dimensions in Millimeters and (Inches)

CAUTION

BERYLLIA WARNING PER MIL-PRF-19500

Package containing beryllia shall not be ground, sandblasted, machined, or have other operations performed on them which will produce beryllia or beryllium dust. Furthermore, beryllium oxide packages shall not be placed in acids that will produce fumes containing beryllium.



WORLD HEADQUARTERS: 233 Kansas St., El Segundo, California 90245, Tel: (310) 322 3331
IR GREAT BRITAIN: Hurst Green, Oxted, Surrey RH8 9BB, UK Tel: ++ 44 1883 732020
IR CANADA: 15 Lincoln Court, Brampton, Ontario L6T3Z2, Tel: (905) 453 2200
IR GERMANY: Saalburgstrasse 157, 61350 Bad Homburg Tel: ++ 49 6172 96590
IR ITALY: Via Liguria 49, 10071 Borgaro, Torino Tel: ++ 39 11 451 0111
IR FAR EAST: K&H Bldg., 2F, 30-4 Nishi-Ikebukuro 3-Chome, Toshima-Ku, Tokyo Japan 171 Tel: 81 3 3983 0086
IR SOUTHEAST ASIA: 1 Kim Seng Promenade, Great World City West Tower, 13-11, Singapore 237994 Tel: ++ 65 838 4630
IR TAIWAN: 16 Fl. Suite D. 207, Sec. 2, Tun Haw South Road, Taipei, 10673, Taiwan Tel: 886-2-2377-9936
<http://www.irf.com/> Data and specifications subject to change without notice. 8/98