

## Advance Information

# Low-Voltage 1.65/2.5/3.3V 16-Bit Transparent Latch

## With 3.6V-Tolerant Inputs and Outputs (3-State, Non-Inverting)

The MC74VCX16373 is an advanced performance, non-inverting 16-bit transparent latch. It is designed for very high-speed, very low-power operation in 1.65V, 2.5V or 3.3V systems. The VCX16373 is byte controlled, with each byte functioning identically, but independently. Each byte has separate Output Enable and Latch Enable inputs. These control pins can be tied together for full 16-bit operation.

When operating at 2.5V (or 1.65V) the part is designed to tolerate voltages it may encounter on either inputs or outputs when interfacing to 3.3V busses. It is guaranteed to be over-voltage tolerant to 3.6V.

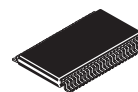
The MC74VCX16373 contains 16 D-type latches with 3-state 3.6V-tolerant outputs. When the Latch Enable (LEn) inputs are HIGH, data on the Dn inputs enters the latches. In this condition, the latches are transparent, (a latch output will change state each time its D input changes). When LE is LOW, the latch stores the information that was present on the D inputs a setup time preceding the HIGH-to-LOW transition of LE. The 3-state outputs are controlled by the Output Enable ( $\overline{OEn}$ ) inputs. When  $\overline{OEn}$  is LOW, the outputs are enabled. When  $\overline{OEn}$  is HIGH, the standard outputs are in the high impedance state, but this does not interfere with new data entering into the latches.

- Designed for Low Voltage Operation:  $V_{CC} = 1.65\text{--}3.6\text{V}$
- 3.6V Tolerant Inputs and Outputs
- High Speed Operation: 3.0ns max for 3.0 to 3.6V  
3.9ns max for 2.3 to 2.7V  
6.8ns max for 1.65 to 1.95V
- Static Drive:  $\pm 24\text{mA}$  Drive at 3.0V  
 $\pm 18\text{mA}$  Drive at 2.3V  
 $\pm 6\text{mA}$  Drive at 1.65V
- Supports Live Insertion and Withdrawal
- IOFF Specification Guarantees High Impedance When  $V_{CC} = 0\text{V}$
- Near Zero Static Supply Current in All Three Logic States (20 $\mu\text{A}$ )  
Substantially Reduces System Power Requirements
- Latchup Performance Exceeds  $\pm 300\text{mA}$  @ 125°C
- ESD Performance: Human Body Model >2000V; Machine Model >200V

# MC74VCX16373

# VCX

**LOW-VOLTAGE 1.65/2.5/3.3V  
16-BIT TRANSPARENT LATCH**



**DT SUFFIX**  
48-LEAD PLASTIC TSSOP PACKAGE  
CASE 1201-01

### PIN NAMES

Pins	Function
$\overline{OEn}$	Output Enable Inputs
LEn	Latch Enable Inputs
D0-D15	Inputs
O0-O15	Outputs



# MC74VCX16373

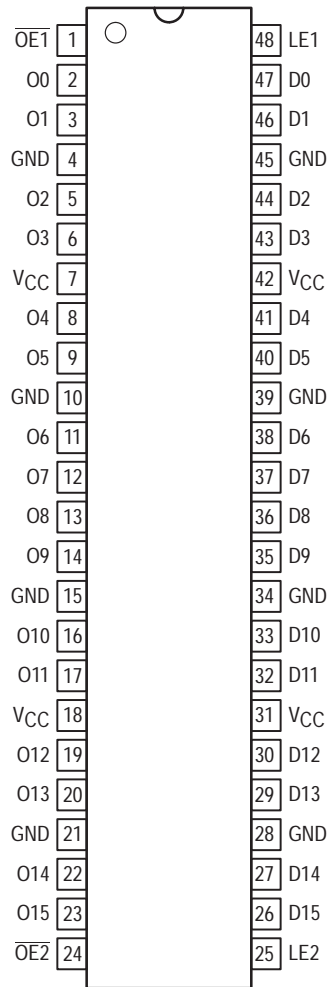


Figure 1. 48-Lead Pinout (Top View)

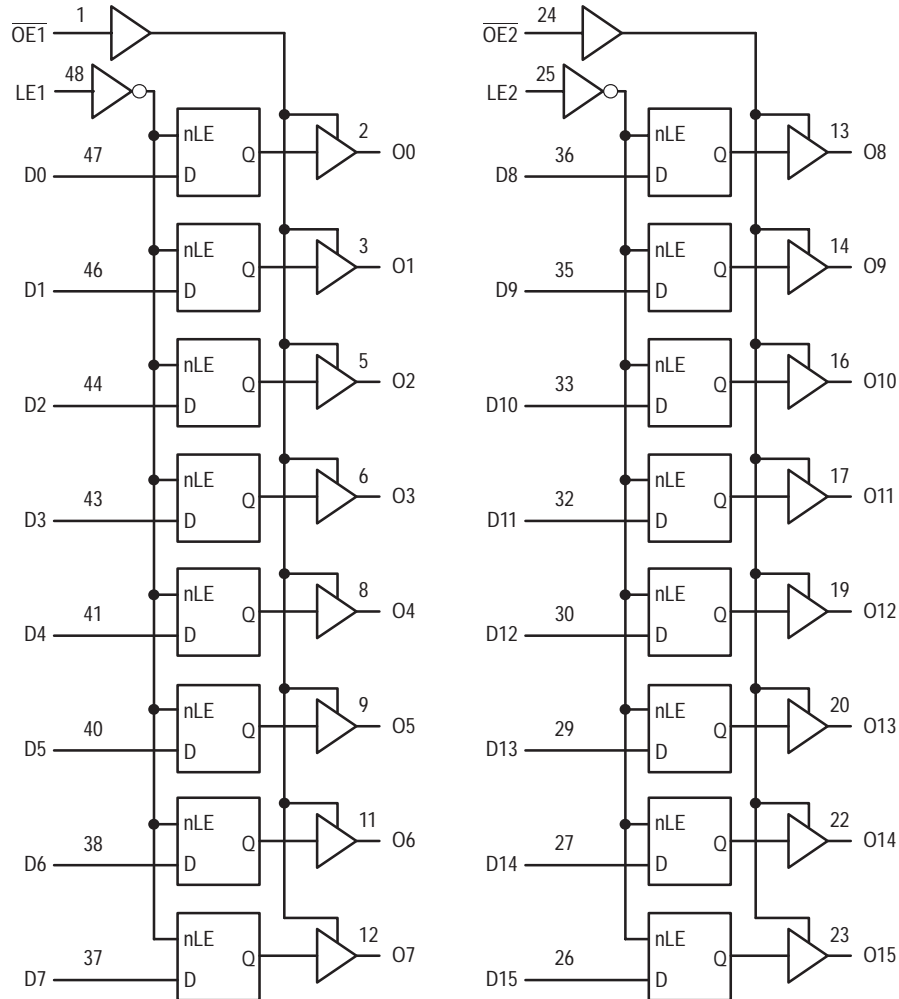


Figure 2. Logic Diagram

Inputs			Outputs	Inputs			Outputs
LE1	OE1	D0:7	O0:7	LE2	OE2	D8:15	O8:15
X	H	X	Z	X	H	X	Z
H	L	L	L	H	L	L	L
H	L	H	H	H	L	H	H
L	L	X	O0	L	L	X	O0

H = High Voltage Level; L = Low Voltage Level; Z = High Impedance State; X = High or Low Voltage Level and Transitions Are Acceptable, for  $I_{CC}$  reasons, DO NOT FLOAT Inputs. O0 = No Change.

**ABSOLUTE MAXIMUM RATINGS\***

Symbol	Parameter	Value	Condition	Unit
$V_{CC}$	DC Supply Voltage	$-0.5$ to $+4.6$		V
$V_I$	DC Input Voltage	$-0.5 \leq V_I \leq +4.6$		V
$V_O$	DC Output Voltage	$-0.5 \leq V_O \leq +4.6$	Output in 3-State	V
		$-0.5 \leq V_O \leq V_{CC} + 0.5$	Note 1.; Outputs Active	V
$I_{IK}$	DC Input Diode Current	$-50$	$V_I < GND$	mA
$I_{OK}$	DC Output Diode Current	$-50$	$V_O < GND$	mA
		$+50$	$V_O > V_{CC}$	mA
$I_O$	DC Output Source/Sink Current	$\pm 50$		mA
$I_{CC}$	DC Supply Current Per Supply Pin	$\pm 100$		mA
$I_{GND}$	DC Ground Current Per Ground Pin	$\pm 100$		mA
$T_{STG}$	Storage Temperature Range	$-65$ to $+150$		$^{\circ}C$

\* Absolute maximum continuous ratings are those values beyond which damage to the device may occur. Exposure to these conditions or conditions beyond those indicated may adversely affect device reliability. Functional operation under absolute-maximum-rated conditions is not implied.

1.  $I_O$  absolute maximum rating must be observed.

**RECOMMENDED OPERATING CONDITIONS**

Symbol	Parameter	Min	Max	Unit
V <sub>CC</sub>	Supply Voltage Operating Data Retention Only	1.65 1.2	3.6 3.6	V
V <sub>I</sub>	Input Voltage	−0.3	3.6	V
V <sub>O</sub>	Output Voltage (Active State) (3-State)	0 0	V <sub>CC</sub> 3.6	V
I <sub>OH</sub>	HIGH Level Output Current, V <sub>CC</sub> = 3.0V – 3.6V		−24	mA
I <sub>OL</sub>	LOW Level Output Current, V <sub>CC</sub> = 3.0V – 3.6V		24	mA
I <sub>OH</sub>	HIGH Level Output Current, V <sub>CC</sub> = 2.3V – 2.7V		−18	mA
I <sub>OL</sub>	LOW Level Output Current, V <sub>CC</sub> = 2.3V – 2.7V		18	mA
I <sub>OH</sub>	HIGH Level Output Current, V <sub>CC</sub> = 1.65 – 1.95V		−6	mA
I <sub>OL</sub>	LOW Level Output Current, V <sub>CC</sub> = 1.65 – 1.95V		6	mA
T <sub>A</sub>	Operating Free-Air Temperature	−40	+85	°C
Δt/ΔV	Input Transition Rise or Fall Rate, V <sub>IN</sub> from 0.8V to 2.0V, V <sub>CC</sub> = 3.0V	0	10	ns/V

**DC ELECTRICAL CHARACTERISTICS** ( $2.7V < V_{CC} \leq 3.6V$ )

Symbol	Characteristic	Condition	$T_A = -40^\circ\text{C to } +85^\circ\text{C}$		Unit
			Min	Max	
$V_{IH}$	HIGH Level Input Voltage (Note 2.)	$2.7V < V_{CC} \leq 3.6V$	2.0		V
$V_{IL}$	LOW Level Input Voltage (Note 2.)	$2.7V < V_{CC} \leq 3.6V$		0.8	V
$V_{OH}$	HIGH Level Output Voltage	$2.7V < V_{CC} \leq 3.6V$ ; $I_{OH} = -100\mu\text{A}$	$V_{CC} - 0.2$		V
		$V_{CC} = 2.7V$ ; $I_{OH} = -12\text{mA}$	2.2		
		$V_{CC} = 3.0V$ ; $I_{OH} = -18\text{mA}$	2.4		
		$V_{CC} = 3.0V$ ; $I_{OH} = -24\text{mA}$	2.2		
$V_{OL}$	LOW Level Output Voltage	$2.7V < V_{CC} \leq 3.6V$ ; $I_{OL} = 100\mu\text{A}$		0.2	V
		$V_{CC} = 2.7V$ ; $I_{OL} = 12\text{mA}$		0.4	
		$V_{CC} = 3.0V$ ; $I_{OL} = 18\text{mA}$		0.4	
		$V_{CC} = 3.0V$ ; $I_{OL} = 24\text{mA}$		0.55	
$I_I$	Input Leakage Current	$2.7V < V_{CC} \leq 3.6V$ ; $0V \leq V_I \leq 3.6V$		$\pm 5.0$	$\mu\text{A}$
$I_{OZ}$	3-State Output Current	$2.7V < V_{CC} \leq 3.6V$ ; $0V \leq V_O \leq 3.6V$ ; $V_I = V_{IH}$ or $V_{IL}$		$\pm 10$	$\mu\text{A}$
$I_{OFF}$	Power-Off Leakage Current	$V_{CC} = 0V$ ; $0V \leq (V_I, V_O) \leq 3.6V$		10	$\mu\text{A}$
$I_{CC}$	Quiescent Supply Current	$2.7V < V_{CC} \leq 3.6V$ ; $V_I = \text{GND}$ or $V_{CC}$		20	$\mu\text{A}$
		$2.7V < V_{CC} \leq 3.6V$ ; $V_{CC} \leq (V_I, V_O) \leq 3.6V$		$\pm 20$	$\mu\text{A}$
$\Delta I_{CC}$	Increase in $I_{CC}$ per Input	$2.7V < V_{CC} \leq 3.6V$ ; $V_{IH} = V_{CC} - 0.6V$		750	$\mu\text{A}$

2. These values of  $V_I$  are used to test DC electrical characteristics only.

**DC ELECTRICAL CHARACTERISTICS** ( $2.3V \leq V_{CC} \leq 2.7V$ )

Symbol	Characteristic	Condition	$T_A = -40^\circ\text{C to } +85^\circ\text{C}$		Unit
			Min	Max	
$V_{IH}$	HIGH Level Input Voltage (Note 3.)	$2.3V \leq V_{CC} \leq 2.7V$	1.6		V
$V_{IL}$	LOW Level Input Voltage (Note 3.)	$2.3V \leq V_{CC} \leq 2.7V$		0.7	V
$V_{OH}$	HIGH Level Output Voltage	$2.3V \leq V_{CC} \leq 2.7V$ ; $I_{OH} = -100\mu\text{A}$	$V_{CC} - 0.2$		V
		$V_{CC} = 2.3V$ ; $I_{OH} = -6\text{mA}$	2.0		
		$V_{CC} = 2.3V$ ; $I_{OH} = -12\text{mA}$	1.8		
		$V_{CC} = 2.3V$ ; $I_{OH} = -18\text{mA}$	1.7		
$V_{OL}$	LOW Level Output Voltage	$2.3V \leq V_{CC} \leq 2.7V$ ; $I_{OL} = 100\mu\text{A}$		0.2	V
		$V_{CC} = 2.3V$ ; $I_{OL} = 12\text{mA}$		0.4	
		$V_{CC} = 2.3V$ ; $I_{OL} = 18\text{mA}$		0.6	
$I_I$	Input Leakage Current	$2.3V \leq V_{CC} \leq 2.7V$ ; $0V \leq V_I \leq 3.6V$		$\pm 5.0$	$\mu\text{A}$
$I_{OZ}$	3-State Output Current	$2.3V \leq V_{CC} \leq 2.7V$ ; $0V \leq V_O \leq 3.6V$ ; $V_I = V_{IH}$ or $V_{IL}$		$\pm 10$	$\mu\text{A}$
$I_{OFF}$	Power-Off Leakage Current	$V_{CC} = 0V$ ; $0V \leq (V_I, V_O) \leq 3.6V$		10	$\mu\text{A}$
$I_{CC}$	Quiescent Supply Current	$2.3V \leq V_{CC} \leq 2.7V$ ; $V_I = \text{GND}$ or $V_{CC}$		20	$\mu\text{A}$
		$2.3V \leq V_{CC} \leq 2.7V$ ; $V_{CC} \leq (V_I, V_O) \leq 3.6V$		$\pm 20$	$\mu\text{A}$

3. These values of  $V_I$  are used to test DC electrical characteristics only.

**DC ELECTRICAL CHARACTERISTICS** ( $1.65\text{V} \leq V_{CC} < 1.95\text{V}$ )

Symbol	Characteristic	Condition	$T_A = -40^\circ\text{C to } +85^\circ\text{C}$		Unit
			Min	Max	
$V_{IH}$	HIGH Level Input Voltage	$1.65\text{V} \leq V_{CC} < 1.95\text{V}$	$0.7 \times V_{CC}$		V
$V_{IL}$	LOW Level Input Voltage	$1.65\text{V} \leq V_{CC} < 1.95\text{V}$		$0.2 \times V_{CC}$	V
$V_{OH}$	HIGH Level Output Voltage	$V_{CC} = 1.65 - 1.95\text{V}; I_{OH} = -100\mu\text{A}$	$V_{CC} - 0.2$		V
		$V_{CC} = 1.65\text{V}; I_{OH} = -6\text{mA}$	1.25		
$V_{OL}$	LOW Level Output Voltage	$V_{CC} = 1.65 - 1.95\text{V}; I_{OL} = 100\mu\text{A}$		0.2	V
		$V_{CC} = 1.65\text{V}; I_{OL} = 6\text{mA}$		0.3	
$I_I$	Input Leakage Current	$V_{CC} = 1.65 - 1.95\text{V}; 0 \leq V_I \leq 3.6\text{V}$		$\pm 5.0$	$\mu\text{A}$
$I_{OZ}$	3-State Output Current	$V_{CC} = 1.65 - 1.95\text{V}; 0 \leq V_O \leq 3.6\text{V}; V_I = V_{IH} \text{ or } V_{IL}$		$\pm 10$	$\mu\text{A}$
$I_{OFF}$	Power-Off Leakage Current	$V_{CC} = 0\text{V}; 0\text{V} \leq (V_I, V_O) \leq 3.6\text{V}$		10	$\mu\text{A}$
$I_{CC}$	Quiescent Supply Current	$V_{CC} = 1.65 - 1.95\text{V}; V_I = V_{CC} \text{ or } \text{GND}$		20	$\mu\text{A}$
		$V_{CC} = 1.65 - 1.95\text{V}; V_{CC} \leq (V_I, V_O) \leq 3.6\text{V}$		$\pm 20$	

**AC CHARACTERISTICS** (Note 4.;  $t_R = t_F = 2.0\text{ns}$ ;  $C_L = 30\text{pF}$ ;  $R_L = 500\Omega$ )

Symbol	Parameter	Waveform	Limits						Unit
			T <sub>A</sub> = −40°C to +85°C						
			V <sub>CC</sub> = 3.0V to 3.6V		V <sub>CC</sub> = 2.3V to 2.7V		V <sub>CC</sub> = 1.65 – 1.95V		
			Min	Max	Min	Max	Min	Max	
t <sub>PLH</sub> t <sub>PHL</sub>	Propagation Delay Dn to On	1	0.8 0.8	3.0 3.0	1.0 1.0	3.4 3.4		6.8 6.8	ns
t <sub>PLH</sub> t <sub>PHL</sub>	Propagation Delay LE to On	1	0.8 0.8	3.0 3.0	1.0 1.0	3.9 3.9		7.8 7.8	ns
t <sub>PZH</sub> t <sub>PZL</sub>	Output Enable Time to High and Low Level	2	0.8 0.8	3.5 3.5	1.0 1.0	4.6 4.6		9.2 9.2	ns
t <sub>PHZ</sub> t <sub>PLZ</sub>	Output Disable Time From High and Low Level	2	0.8 0.8	3.5 3.5	1.0 1.0	3.8 3.8		6.8 6.8	ns
t <sub>s</sub>	Setup Time, High or Low Dn to LE	3	1.5		1.5		2.5		ns
t <sub>h</sub>	Hold Time, High or Low Dn to LE	3	1.0		1.0		1.0		ns
t <sub>w</sub>	LE Pulse Width, High	3	1.5		1.5		4.0		ns
t <sub>OSHL</sub> t <sub>OSLH</sub>	Output-to-Output Skew (Note 5.)			0.5 0.5		0.5 0.5		0.5 0.5	ns

4. These AC parameters are preliminary and may be modified prior to release. For  $C_L = 50\text{pF}$ , add approximately 300ps to the AC maximum specification.

5. Skew is defined as the absolute value of the difference between the actual propagation delay for any two separate outputs of the same device. The specification applies to any outputs switching in the same direction, either HIGH-to-LOW ( $t_{OSHL}$ ) or LOW-to-HIGH ( $t_{OSLH}$ ); parameter guaranteed by design.

## DYNAMIC SWITCHING CHARACTERISTICS

Symbol	Characteristic	Condition	$T_A = +25^\circ\text{C}$	Unit
			Typ	
$V_{OLP}$	Dynamic LOW Peak Voltage (Note 6.)	$V_{CC} = 1.8\text{V}, C_L = 30\text{pF}, V_{IH} = V_{CC}, V_{IL} = 0\text{V}$	0.25	V
		$V_{CC} = 2.5\text{V}, C_L = 30\text{pF}, V_{IH} = V_{CC}, V_{IL} = 0\text{V}$	0.6	
		$V_{CC} = 3.3\text{V}, C_L = 30\text{pF}, V_{IH} = V_{CC}, V_{IL} = 0\text{V}$	0.8	
$V_{OLV}$	Dynamic LOW Valley Voltage (Note 6.)	$V_{CC} = 1.8\text{V}, C_L = 30\text{pF}, V_{IH} = V_{CC}, V_{IL} = 0\text{V}$	-0.25	V
		$V_{CC} = 2.5\text{V}, C_L = 30\text{pF}, V_{IH} = V_{CC}, V_{IL} = 0\text{V}$	-0.6	
		$V_{CC} = 3.3\text{V}, C_L = 30\text{pF}, V_{IH} = V_{CC}, V_{IL} = 0\text{V}$	-0.8	
$V_{OHV}$	Dynamic HIGH Valley Voltage (Note 7.)	$V_{CC} = 1.8\text{V}, C_L = 30\text{pF}, V_{IH} = V_{CC}, V_{IL} = 0\text{V}$	1.5	V
		$V_{CC} = 2.5\text{V}, C_L = 30\text{pF}, V_{IH} = V_{CC}, V_{IL} = 0\text{V}$	1.9	
		$V_{CC} = 3.3\text{V}, C_L = 30\text{pF}, V_{IH} = V_{CC}, V_{IL} = 0\text{V}$	2.2	

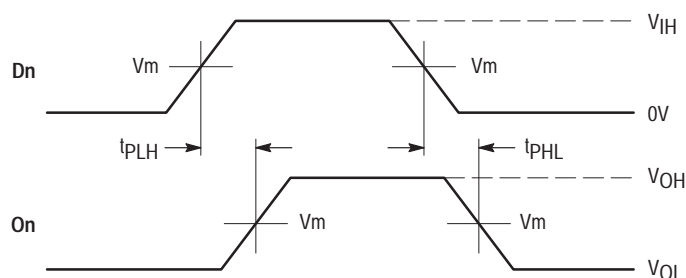
6. Number of outputs defined as "n". Measured with "n-1" outputs switching from HIGH-to-LOW or LOW-to-HIGH. The remaining output is measured in the LOW state.

7. Number of outputs defined as "n". Measured with "n-1" outputs switching from HIGH-to-LOW or LOW-to-HIGH. The remaining output is measured in the HIGH state.

## CAPACITIVE CHARACTERISTICS

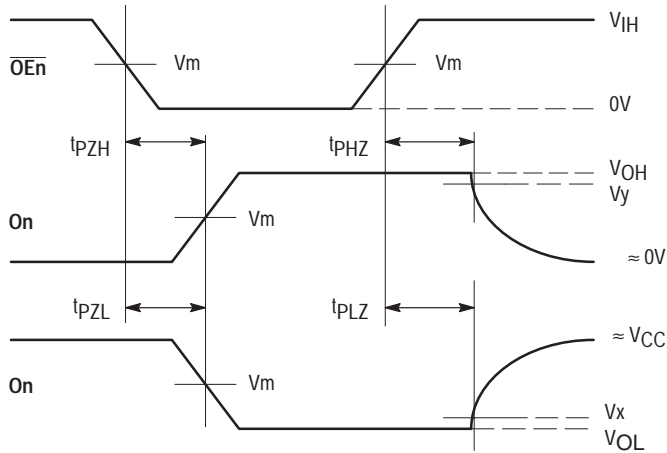
Symbol	Parameter	Condition	Typical	Unit
$C_{IN}$	Input Capacitance	Note 8.	6	pF
$C_{OUT}$	Output Capacitance	Note 8.	7	pF
$CPD$	Power Dissipation Capacitance	Note 8., 10MHz	20	pF

8.  $V_{CC} = 1.8, 2.5$  or  $3.3\text{V}$ ;  $V_I = 0\text{V}$  or  $V_{CC}$ .

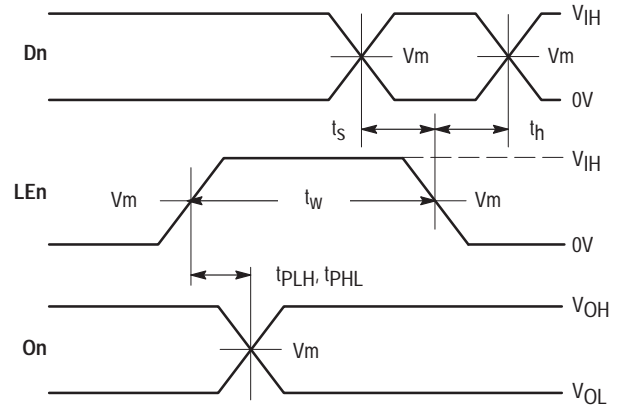


WAVEFORM 1 – PROPAGATION DELAYS  
 $t_R = t_F = 2.0\text{ns}$ , 10% to 90%;  $f = 1\text{MHz}$ ;  $t_W = 500\text{ns}$

Figure 3. AC Waveforms



WAVEFORM 2 – OUTPUT ENABLE AND DISABLE TIMES

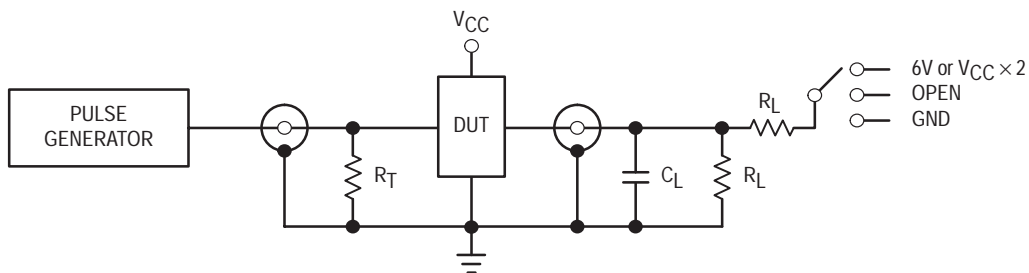
 $t_R = t_F = 2.0\text{ns}$ , 10% to 90%;  $f = 1\text{MHz}$ ;  $t_W = 500\text{ns}$ 


WAVEFORM 3 – LE to On PROPAGATION DELAYS, LE MINIMUM PULSE WIDTH, Dn to LE SETUP AND HOLD TIMES

 $t_R = t_F = 2.0\text{ns}$ , 10% to 90%;  $f = 1\text{MHz}$ ;  $t_W = 500\text{ns}$  except when noted

Figure 4. AC Waveforms

Symbol	$V_{CC}$		
	$3.3\text{V} \pm 0.3\text{V}$	$2.5\text{V} \pm 0.2\text{V}$	$1.8\text{V} \pm 0.15\text{V}$
$V_{IH}$	2.7V	$V_{CC}$	$V_{CC}$
$V_m$	1.5V	$V_{CC}/2$	$V_{CC}/2$
$V_x$	$V_{OL} + 0.3\text{V}$	$V_{OL} + 0.15\text{V}$	$V_{OL} + 0.15\text{V}$
$V_y$	$V_{OH} - 0.3\text{V}$	$V_{OH} - 0.15\text{V}$	$V_{OH} - 0.15\text{V}$



TEST	SWITCH
$t_{PLH}$ , $t_{PHL}$	Open
$t_{PZL}$ , $t_{PLZ}$	6V at $V_{CC} = 3.3 \pm 0.3\text{V}$ ; $V_{CC} \times 2$ at $V_{CC} = 2.5 \pm 0.2\text{V}$ ; $1.8\text{V} \pm 0.15\text{V}$
$t_{PZH}$ , $t_{PHZ}$	GND

 $C_L = 30\text{pF}$  or equivalent (Includes jig and probe capacitance)

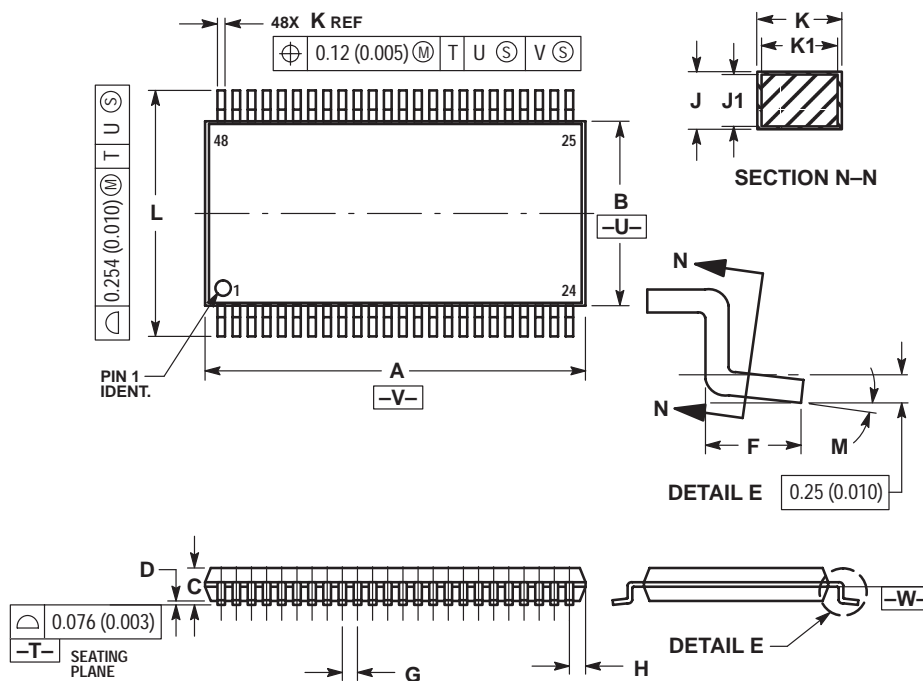
 $R_L = 500\Omega$  or equivalent

 $R_T = Z_{OUT}$  of pulse generator (typically  $50\Omega$ )

Figure 5. Test Circuit

## OUTLINE DIMENSIONS


**DT SUFFIX**  
**PLASTIC TSSOP PACKAGE**  
CASE 1201-01  
ISSUE A



## NOTES:

1. DIMENSIONING AND TOLERANCING PER ANSI Y14.5M, 1982.
2. CONTROLLING DIMENSION: MILLIMETER.
3. DIMENSIONS A AND B DO NOT INCLUDE MOLD FLASH, PROTRUSIONS OR GATE BURRS. MOLD FLASH OR GATE BURRS SHALL NOT EXCEED 0.15 (0.006) PER SIDE.
4. DIMENSION K DOES NOT INCLUDE DAMBAR PROTRUSION. ALLOWABLE DAMBAR PROTRUSION SHALL BE 0.08 (0.003) TOTAL IN EXCESS OF THE K DIMENSION AT MAXIMUM MATERIAL CONDITION.
5. TERMINAL NUMBERS ARE SHOWN FOR REFERENCE ONLY.
6. DIMENSIONS A AND B ARE TO BE DETERMINED AT DATUM PLANE -W-.

DIM	MILLIMETERS		INCHES	
	MIN	MAX	MIN	MAX
A	12.40	12.60	0.488	0.496
B	6.00	6.20	0.236	0.244
C	—	1.10	—	0.043
D	0.05	0.15	0.002	0.006
F	0.50	0.75	0.020	0.030
G	0.50 BSC	—	0.0197 BSC	—
H	0.37	—	0.015	—
J	0.09	0.20	0.004	0.008
J1	0.09	0.16	0.004	0.006
K	0.17	0.27	0.007	0.011
K1	0.17	0.23	0.007	0.009
L	7.95	8.25	0.313	0.325
M	0°	8°	0°	8°

Motorola reserves the right to make changes without further notice to any products herein. Motorola makes no warranty, representation or guarantee regarding the suitability of its products for any particular purpose, nor does Motorola assume any liability arising out of the application or use of any product or circuit, and specifically disclaims any and all liability, including without limitation consequential or incidental damages. "Typical" parameters which may be provided in Motorola data sheets and/or specifications can and do vary in different applications and actual performance may vary over time. All operating parameters, including "Typicals" must be validated for each customer application by customer's technical experts. Motorola does not convey any license under its patent rights nor the rights of others. Motorola products are not designed, intended, or authorized for use as components in systems intended for surgical implant into the body, or other applications intended to support or sustain life, or for any other application in which the failure of the Motorola product could create a situation where personal injury or death may occur. Should Buyer purchase or use Motorola products for any such unintended or unauthorized application, Buyer shall indemnify and hold Motorola and its officers, employees, subsidiaries, affiliates, and distributors harmless against all claims, costs, damages, and expenses, and reasonable attorney fees arising out of, directly or indirectly, any claim of personal injury or death associated with such unintended or unauthorized use, even if such claim alleges that Motorola was negligent regarding the design or manufacture of the part. Motorola and  are registered trademarks of Motorola, Inc. Motorola, Inc. is an Equal Opportunity/Affirmative Action Employer.

Mfax is a trademark of Motorola, Inc.

**How to reach us:**

**USA/EUROPE/Locations Not Listed:** Motorola Literature Distribution;  
P.O. Box 5405, Denver, Colorado 80217. 1-303-675-2140 or 1-800-441-2447

**JAPAN:** Motorola Japan Ltd.; SPD, Strategic Planning Office, 141,  
4-32-1 Nishi-Gotanda, Shinagawa-ku, Tokyo, Japan. 81-3-5487-8488

**Customer Focus Center: 1-800-521-6274**

**Mfax™:** RMFAX0@email.sps.mot.com – TOUCHTONE 1-602-244-6609  
Motorola Fax Back System – US & Canada ONLY 1-800-774-1848  
– <http://sps.motorola.com/mfax/>

**ASIA/PACIFIC:** Motorola Semiconductors H.K. Ltd.; Silicon Harbour Centre,  
2, Dai King Street, Tai Po Industrial Estate, Tai Po, N.T., Hong Kong.  
852-26629298

**HOME PAGE:** <http://motorola.com/sps/>

