

3A LDO 5-Pin 2.5V Fixed Linear Regulator for Remote Sense Applications

Description

This new very low dropout linear regulator reduces total power dissipation in the application. To achieve very low dropout, the internal pass transistor is powered separately from the control circuitry. Furthermore, with the control and power inputs tied together, this device can be used in single supply configuration and still offer a better dropout voltage than conventional PNP-NPN based LDO regulators. In this mode the dropout is determined by the minimum control voltage.

The CS5253B-8 is offered in a five-terminal D²PAK package, which allows for the implementation of a remote-sense pin permitting very accurate regulation of output voltage directly at the load, where it counts, rather than at the regulator. This remote sensing feature virtually eliminates output voltage variations due to load changes and resistive voltage drops. Typical load

regulation measured at the sense pin is less than 1mV for an output voltage of 2.5V with a load step of 10mA to 3A.

The CS5253B-8 has a very fast transient loop response.

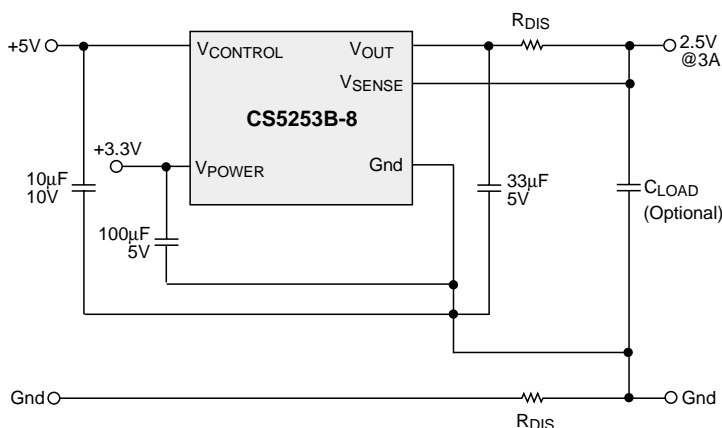
Internal protection circuitry provides for "bust-proof" operation, similar to three-terminal regulators. This circuitry, which includes over-current, short circuit, and over-temperature protection will self protect the regulator under all fault conditions.

The CS5253B-8 is ideal for generating a 2.5V supply to power graphics controllers used on VGA cards. Its remote sense and low value capacitance requirements make this a low cost high performance solution. The CS5253B-8 is optimized from the CS5253-1 to allow a lower value of output capacitor to be used at the expense of a slower transient response.

Features

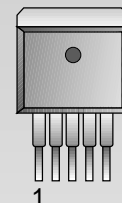
- V_{OUT} Fixed @ 2.5V ± 1.5%
- V_{POWER} Dropout < 0.40V @ 3A
- V_{CONTROL} Dropout < 1.05V @ 3A
- 1.5% Trimmed Reference
- Fast Transient Response
- Remote Voltage Sensing
- Thermal Shutdown
- Current Limit
- Short Circuit Protection
- Drop-In Replacement for EZ1582
- Backwards Compatible with 3-pin Regulators
- Very Low Dropout Reduces Total Power Consumption

Applications Diagram



Package Option

5 Lead D²PAK



1. V_{SENSE}
 2. Gnd
 3. V_{OUT}
 4. V_{CONTROL}
 5. V_{POWER}
- Tab = V_{OUT}



ON Semiconductor

December, 1999 - Rev. 1

ON Semiconductor
2000 South County Trail, East Greenwich, RI 02818
Tel: (401)885-3600 Fax: (401)885-5786
N. American Technical Support: 800-282-9855
Web Site: www.cherry-semi.com

Absolute Maximum Ratings

V _{POWER} Input Voltage.....	6V
V _{CONTROL} Input Voltage.....	13V
Operating Junction Temperature Range	0°C ≤ T _J ≤ 150°C
Storage Temperature Range.....	-65°C to +150°C
Lead Temperature Soldering	
Reflow (SMD styles only)	60 sec. max above 183°C, 230°C peak
ESD Damage Threshold.....	2kV

Electrical Characteristics: 0°C ≤ T_A ≤ 70°C; 0°C ≤ T_J ≤ 150°C; V_{SENSE} = V_{OUT} and Ground = 0V; unless otherwise specified.

PARAMETER	TEST CONDITIONS	MIN	TYP	MAX	UNIT
Output Voltage	V _{CONTROL} = 3.9V to 12V, V _{POWER} = 3.13V to 5.5V, I _{OUT} = 10mA to 3A	2.463 (-1.5%)	2.50	2.538 (+1.5%)	V
Line Regulation	V _{CONTROL} = 3.9V to 12V, V _{POWER} = 3.13V to 5.5V, I _{OUT} = 10mA		.02	.20	%
Load Regulation	V _{CONTROL} = 3.9V, V _{POWER} = 3.13V, I _{OUT} = 10mA to 3A, with remote sense		.04	.30	%
Minimum Load Current (Note 1)	V _{CONTROL} = 5V, V _{POWER} = 3.3V, ΔV _{OUT} = +1%		0	0	mA
Control Pin Current (Note 2)	V _{CONTROL} = 3.9V, V _{POWER} = 3.13V, I _{OUT} = 100mA V _{CONTROL} = 3.9V, V _{POWER} = 3.13V, I _{OUT} = 3A		6 35	10 120	mA mA
Ground Pin Current	V _{CONTROL} = 3.9V, V _{POWER} = 3.13V, I _{OUT} = 10mA		7	10	mA
Current Limit	V _{CONTROL} = 3.9V, V _{POWER} = 3.13V, ΔV _{OUT} = -4%	3.1	4.0		A
Short Circuit Current	V _{CONTROL} = 3.9V, V _{POWER} = 3.13V, V _{OUT} = 0V	2.0	3.5		A
Ripple Rejection (Note 3)	V _{CONTROL} = V _{POWER} = 3.9V, V _{RIPPLE} = 1V _{P-P} @120Hz, I _{OUT} = 3A	60	80		dB
Thermal Regulation	30ms Pulse, T _A = 25°C		0.002		%/W
V _{CONTROL} Dropout Voltage (Minimum V _{CONTROL} -V _{OUT}) (Note 4)	V _{POWER} = 3.13V, I _{OUT} = 100mA V _{POWER} = 3.13V, I _{OUT} = 1A V _{POWER} = 3.13V, I _{OUT} = 3A		0.90 1.00 1.05	1.15 1.15 1.30	V V V
V _{POWER} Dropout Voltage (Minimum V _{POWER} -V _{OUT}) (Note 4)	V _{CONTROL} = 3.9V, I _{OUT} = 100mA V _{CONTROL} = 3.9V, I _{OUT} = 1A V _{CONTROL} = 3.9V, I _{OUT} = 3A		.05 .15 .40	.15 .25 .60	V V V
RMS Output Noise	Freq = 10Hz to 10kHz, T _A = 25°C		0.003		%V _{OUT}
Temperature Stability		0.5			%
Thermal Shutdown (Note 5)		150	180	210	°C
Thermal Shutdown Hysteresis			25		°C
V _{CONTROL} Supply Only Output Current	V _{CONTROL} = 13V, V _{POWER} not connected, Gnd = V _{OUT} = V _{SENSE} = 0V			50	mA
V _{POWER} Supply Only Output Current	V _{POWER} = 6V, V _{CONTROL} not connected, Gnd = V _{OUT} = V _{SENSE} = 0V		0.1	1.0	mA

Note 1: The minimum load current is the minimum current required to maintain regulation.

Note 2: The V_{CONTROL} pin current is the drive current required for the output transistor. This current will track output current with roughly a 1:100 ratio. The minimum value is equal to the quiescent current of the device.

Note 3: This parameter is guaranteed by design and is not 100% production tested.

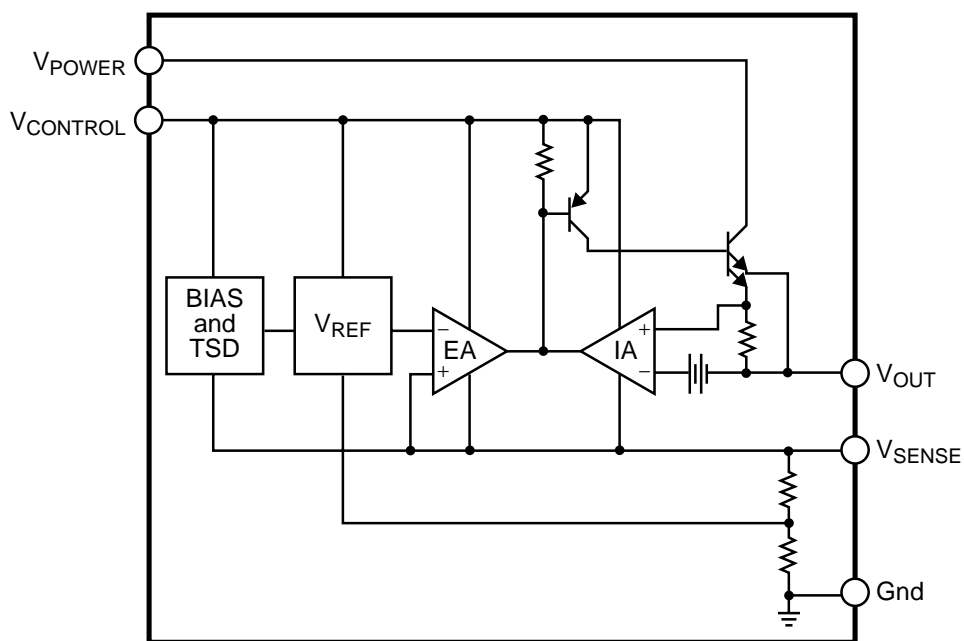
Note 4: Dropout is defined as either the minimum control voltage (V_{CONTROL}) or minimum power voltage (V_{POWER}) to output voltage differential required to maintain 1.5% regulation at a particular load current.

Note 5: This parameter is guaranteed by design, but not parametrically tested in production. However, a 100% thermal shutdown functional test is performed on each part.

Package Pin Description

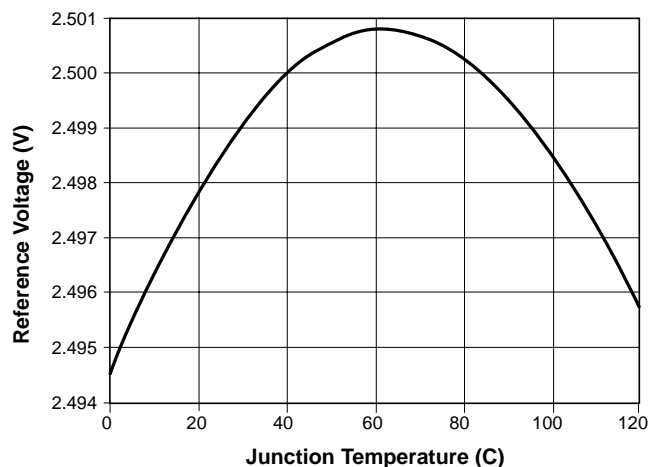
PACKAGE PIN #	PIN SYMBOL	FUNCTION
5Lead D² PAK		
1	V_{SENSE}	This Kelvin sense pin allows for remote sensing of the output voltage at the load for improved regulation. It is internally connected to the positive input of the voltage sensing error amplifier.
2	Gnd	This pin is connected to system ground.
3	V_{OUT}	This pin is connected to the emitter of the power pass transistor and provides a regulated voltage capable of sourcing 3A of current.
4	V_{CONTROL}	This is the supply voltage for the regulator control circuitry. For the device to regulate, this voltage should be between 0.9V and 1.3V (depending on the output current) greater than the output voltage. The control pin current will be about 1% of the output current.
5	V_{POWER}	This is the power input voltage. The pin is physically connected to the collector of the power pass transistor. For the device to regulate, this voltage should be between 0.1V and 0.6V greater than the output voltage, depending on output current. The output load current of 3A is supplied through this pin.

Block Diagram

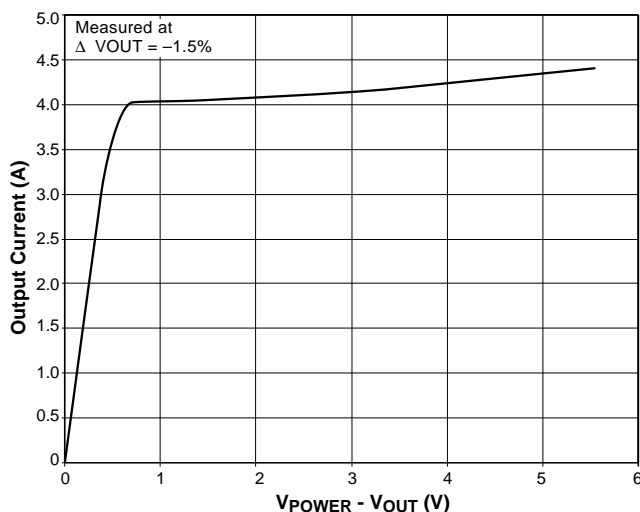


Typical Performance Characteristics

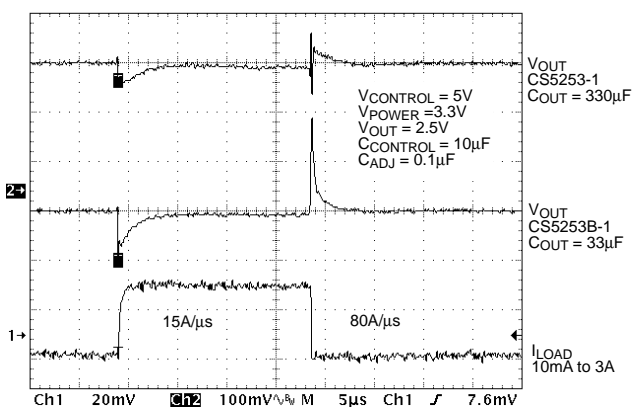
Output Voltage vs Junction Temperature



Output Current vs $V_{POWER} - V_{OUT}$

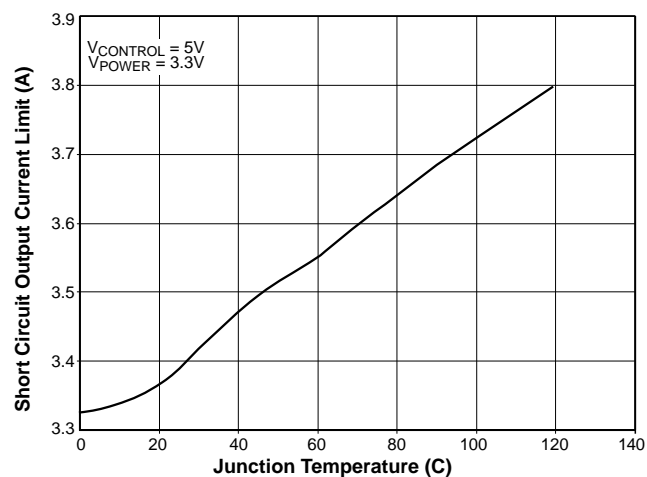


Transient Response

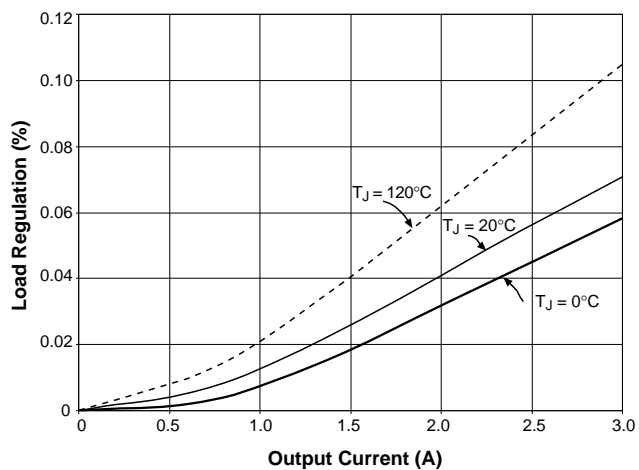


Transient Response Comparison between CS5253-1 and CS5253B-1

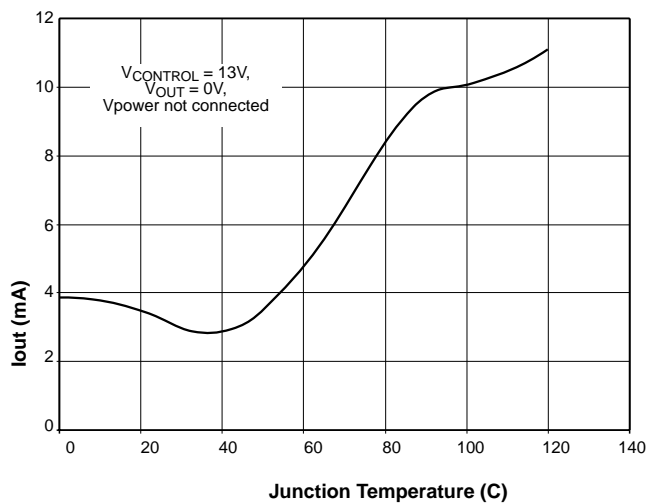
Short Circuit Output Current vs Junction Temperature



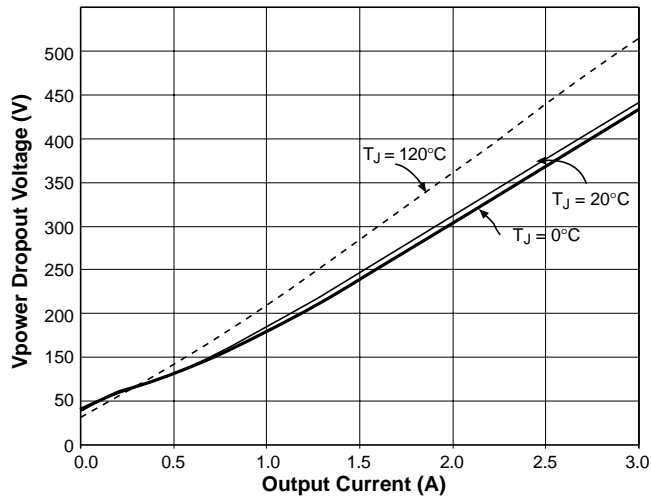
Load Regulation vs Output Current



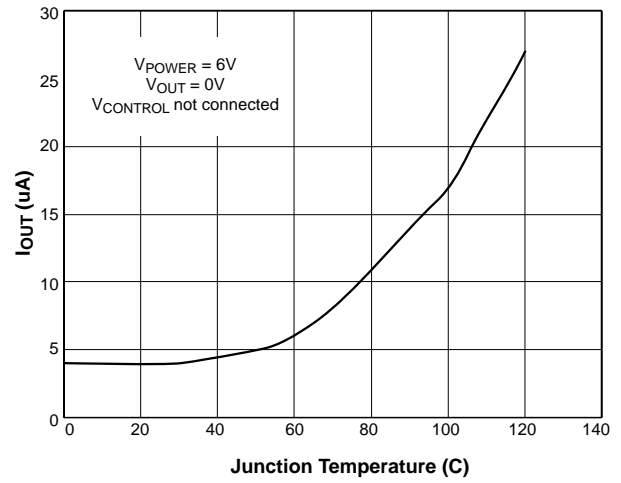
$V_{CONTROL}$ Only Output Current vs Junction Temperature



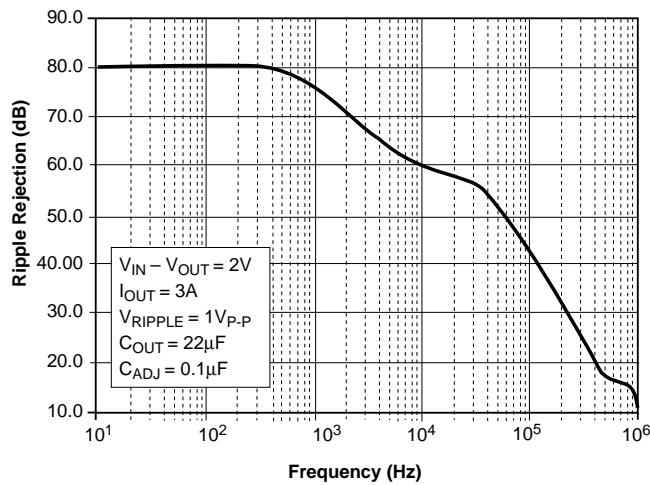
V_{POWER} Dropout Voltage vs Output Current



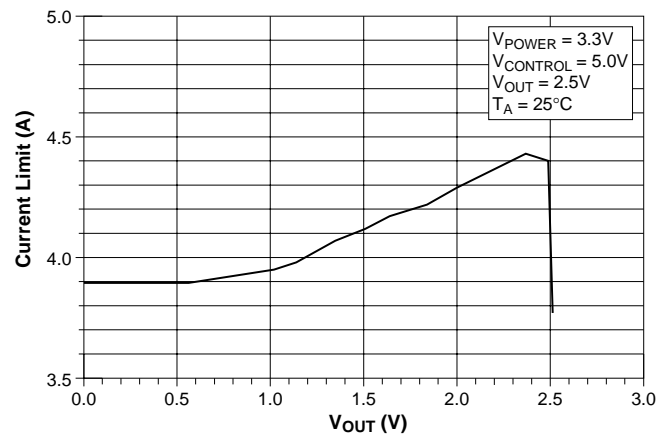
V_{POWER} Only Output Current vs Junction Temperature



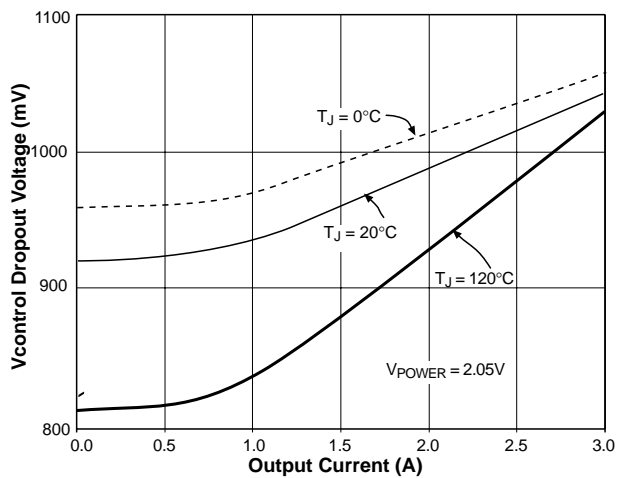
Ripple Rejection vs Frequency



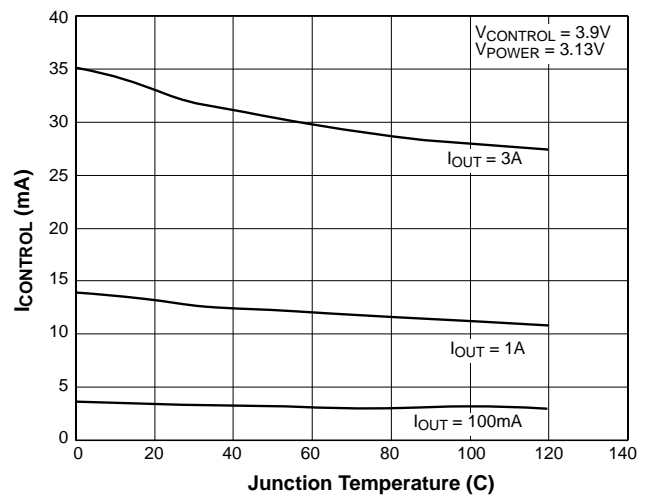
Current Limit vs V_{OUT}



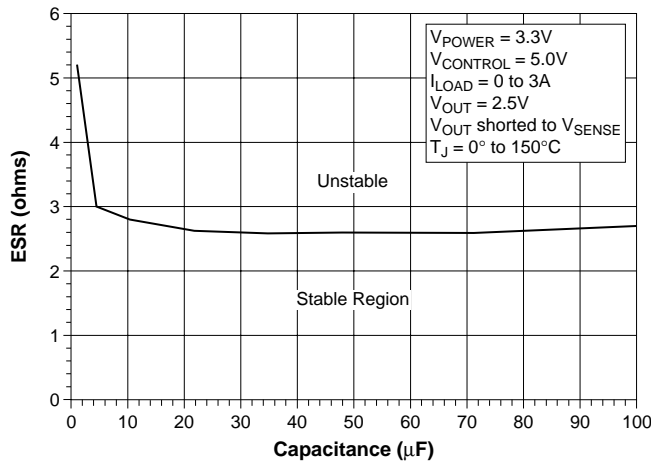
$V_{CONTROL}$ Dropout Voltage vs Output Current



$V_{CONTROL}$ Supply Current vs Junction Temperature



Stability vs ESR



Application Notes

Theory of Operation

The CS5253B-8 linear regulator is fixed at 2.5V at currents up to 3A. The regulator is protected against short circuits, and includes a thermal shutdown circuit with hysteresis. The output, which is current limited, consists of a PNP-NPN transistor pair and requires an output capacitor for stability.

 V_{POWER} Function

The CS5253B-8 utilizes a two supply approach to maximize efficiency. The collector of the power device is brought out to the V_{POWER} pin to minimize internal power dissipation under high current loads. $V_{CONTROL}$ provides for the control circuitry and the drive for the output NPN transistor. $V_{CONTROL}$ should be at least 1V greater than the output voltage. Special care has been taken to ensure that there are no supply sequencing problems. The output voltage will not turn on until both supplies are operating. If the control voltage comes up first, the output current will be limited to about three milliamperes until the power input voltage comes up. If the power input voltage comes up first, the output will not turn on at all until the control voltage comes up. The output can never come up unregulated.

The CS5253B-8 can also be used as a single supply device with the control and power inputs tied together. In this mode, the dropout will be determined by the minimum control voltage.

Output Voltage Sensing

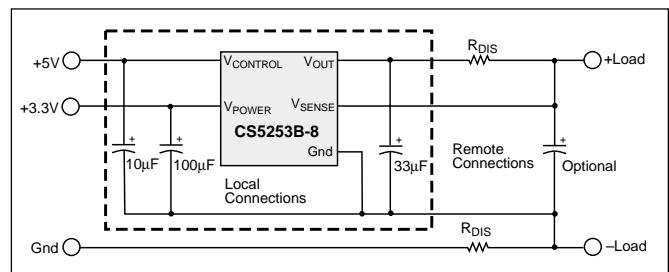
The CS5253B-8 five terminal linear regulator includes a dedicated V_{SENSE} function. This allows for true Kelvin sensing of the output voltage. This feature can virtually eliminate errors in the output voltage due to load regulation. Regulation will be optimized at the point where the sense pin is tied to the output.

Design Guidelines

Remote Sense

Remote sense operation can be easily obtained with the CS5253B-8 but some care must be paid to the layout and positioning of the filter capacitors around the part. The ground side of the input capacitors on the +5V and +3.3V lines and the local V_{OUT} -to-ground output capacitor on the IC must be tied close to the ground pin of the regulator. This will establish the stability of the part. The IC ground may then be connected to ground remotely at the load, giving the ground portion remote sense operation.

The V_{SENSE} line can then be tied remotely at the positive load connection, giving the feedback remote sense operation. The remote sense lines should be Kelvin connected so as to eliminate the effect of load current voltage drop. An optional bypass capacitor may be used at the load to reduce the effect of load variations and spikes.



Remote Sense

Current Limit

The internal current limit circuit limits the output current under excessive load conditions.

Short Circuit Protection

The device includes short circuit protection circuitry that clamps the output current at approximately 500mA less than its current limit value. This provides for a current fold-back function, which reduces power dissipation under a direct shorted load.

Thermal Shutdown

The thermal shutdown circuitry is guaranteed by design to activate above a die junction temperature of approximately 150°C and to shut down the regulator output. This circuitry has 25°C of typical hysteresis, thereby allowing the regulator to recover from a thermal fault automatically.

Calculating Power Dissipation and Heat Sink Requirements

High power regulators such as the CS5253B-8 usually operate at high junction temperatures. Therefore, it is important to calculate the power dissipation and junction temperatures accurately to ensure that an adequate heat sink is used. Since the package tab is connected to V_{OUT} on the CS5253B-8, electrical isolation may be required for some applications. Also, as with all high power packages, thermal compound is necessary to ensure proper heat flow. For added safety, this high current LDO includes an internal thermal shutdown circuit.

The thermal characteristics of an IC depend on the following four factors: junction temperature, ambient temperature, die power dissipation, and the thermal resistance from the die junction to ambient air. The maximum junction temperature can be determined by:

$$T_{J(max)} = T_{A(max)} + PD_{(max)} \times R_{\theta JA}$$

The maximum ambient temperature and the power dissipation are determined by the design while the maximum junction temperature and the thermal resistance depend on the manufacturer and the package type. The maximum power dissipation for a regulator is:

$$PD_{(max)} = (V_{IN(max)} - V_{OUT(min)})I_{OUT(max)} + V_{IN(max)} \times I_{IN(max)}$$

A heat sink effectively increases the surface area of the package to improve the flow of heat away from the IC and into the surrounding air. Each material in the heat flow path between the IC and the outside environment has a thermal resistance which is measured in degrees per watt. Like series electrical resistances, these thermal resistances are summed to determine the total thermal resistance between the die junction and the surrounding air, $R_{\theta JA}$. This total thermal resistance is comprised of three components. These resistive terms are measured from junction to case ($R_{\theta JC}$), case to heat sink ($R_{\theta CS}$), and heat sink to ambient air ($R_{\theta SA}$). The equation is:

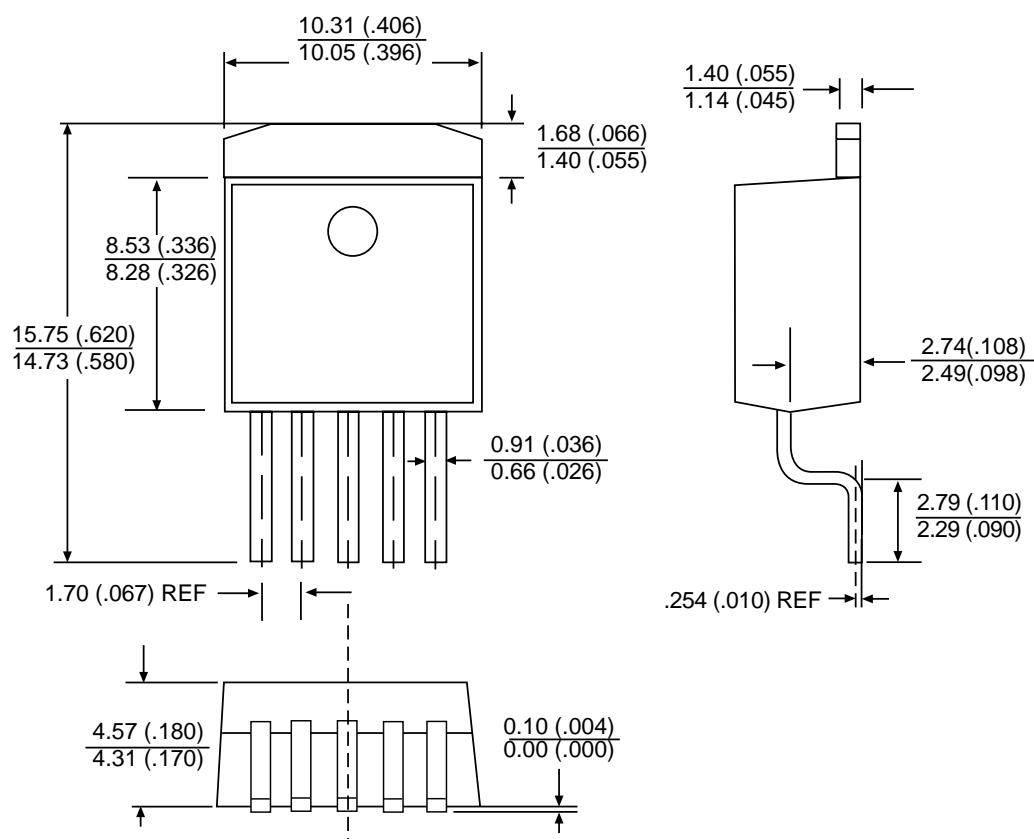
$$R_{\theta JA} = R_{\theta JC} + R_{\theta CS} + R_{\theta SA}$$

The value for $R_{\theta JC}$ is 2.5°C/watt for the CS5253B-8 in the D²PAK package. For a high current regulator such as the CS5253B-8 the majority of heat is generated in the power transistor section. The value for $R_{\theta SA}$ depends on the heat sink type, while the $R_{\theta CS}$ depends on factors such as package type, heat sink interface (is an insulator and thermal grease used?), and the contact area between the heat sink and the package. Once these calculations are complete, the maximum permissible value of $R_{\theta JA}$ can be calculated and the proper heat sink selected. For further discussion on heat sink selection, see our ON application note "Thermal Management for Linear Regulators."

PACKAGE THERMAL DATA

Thermal Data		5Lead D ² PAK	
R _{ΘJC}	typ	2.5	°C/W
R _{ΘJA}	typ	10-50*	°C/W

*Depending on thermal properties of substrate. R_{ΘJA} = R_{ΘJC} + R_{ΘCA}

5 Lead D²PAK (DP)

Ordering Information

Part Number	Description
CS5253B-8GDP5	5 Lead D ² PAK
CS5253B-8GDPR5	5 Lead D ² PAK (tape & reel)

ON Semiconductor and the ON Logo are trademarks of Semiconductor Components Industries, LLC (SCILLC). ON Semiconductor reserves the right to make changes without further notice to any products herein. For additional information and the latest available information, please contact your local ON Semiconductor representative.