


PREPARED BY: _____ DATE: _____	 APPLIANCE SYSTEMS GROUP SHARP CORPORATION  <b>SPECIFICATION</b>	No. <b>YH-7S51-01</b>
APPROVED BY: _____ DATE: _____		FILE No. _____
		ISSUE: <b>Feb. 27, 1998</b>
		PAGE <b>10 Pages</b>
		APPLICABLE DIVISION  <b>YAO PLANT</b> <b>APPLIANCE SYSTEMS GROUP</b>

Model No.

## SPECIFICATIONS FOR COLOR CCD CAMERA

**YH-7S51 ; NTSC**

**YH-7S61 ; NTSC(with microphone)**

☐ CUSTOMER'S APPROVAL

DATE \_\_\_\_\_

BY \_\_\_\_\_

PRESENTED

BY  \_\_\_\_\_

J. Aoki

Vice President

Department General Manager

House Electronics Business Promotion Dept.

Appliance Systems Group

SHARP CORPORATION

## RECORDS OF REVISION

[illegible]

- **Handle this document carefully for it contains material protected by international copyright law. Any reproduction, full or in part, of this material is prohibited without the express written permission of the company.**
- **When using the products covered herein, please observe the conditions and the precautions written herein. In no event shall the company be liable for any damages resulting from failure to strictly adhere to these conditions and precautions.**
- **Those contemplating using the products which demands high reliability, should accept responsibility for incorporating into the design fail-safe operation, redundancy, and other appropriate measures for ensuring reliability and safety of the equipment and the overall system.**
- **Do not use the products covered herein for the following equipment which demands extremely high performance in terms of functionality, reliability, or accuracy.**
  - **Aerospace equipment**
  - **Communications equipment for trunk lines**
  - **Control equipment for the nuclear power industry**
  - **Medical equipment related to life support, etc.**
- **Please direct all queries regarding the products covered herein to a sales representative of the company.**

## 1. Application

This document describes the specifications of Color CCD Camera to be supplied to \_\_\_\_\_.

All figures described in this document are based on the conditions that the camera is used under \*normal operating temperature, normal operating humidity.

\*Normal operating temperature ; +20 ~ +25°C

\*Normal operating humidity ; 65±5%RH

The monitor to be used shall be standard monitor.

Model No.	TV system	Output signal	Iris control	Built-in microphone
YH-7S51	NTSC	Composite	1/100 sec.(fixed)	-----
YH-7S61				○

## 2. General Description

This color CCD camera incorporates 1/4-inch CCD with following characteristics:

- 1) Flicker free / hunting free
- 2) Focus ; manual adjustable
- 3) Structure ; Soft base with tilt adjustment
- 4) Output signal ; Composite
- 5) Integrated connecting cable

• Connector(Audio,Video)

Model No.	Connector
YH-7S51	RCA pin jack(Video)
YH-7S61	RCA pin jack(Video) 1/8"mini-jack(Audio)

• DC power supply ; DC plug male type

φ 2.5 x φ 5.5 x 9.5



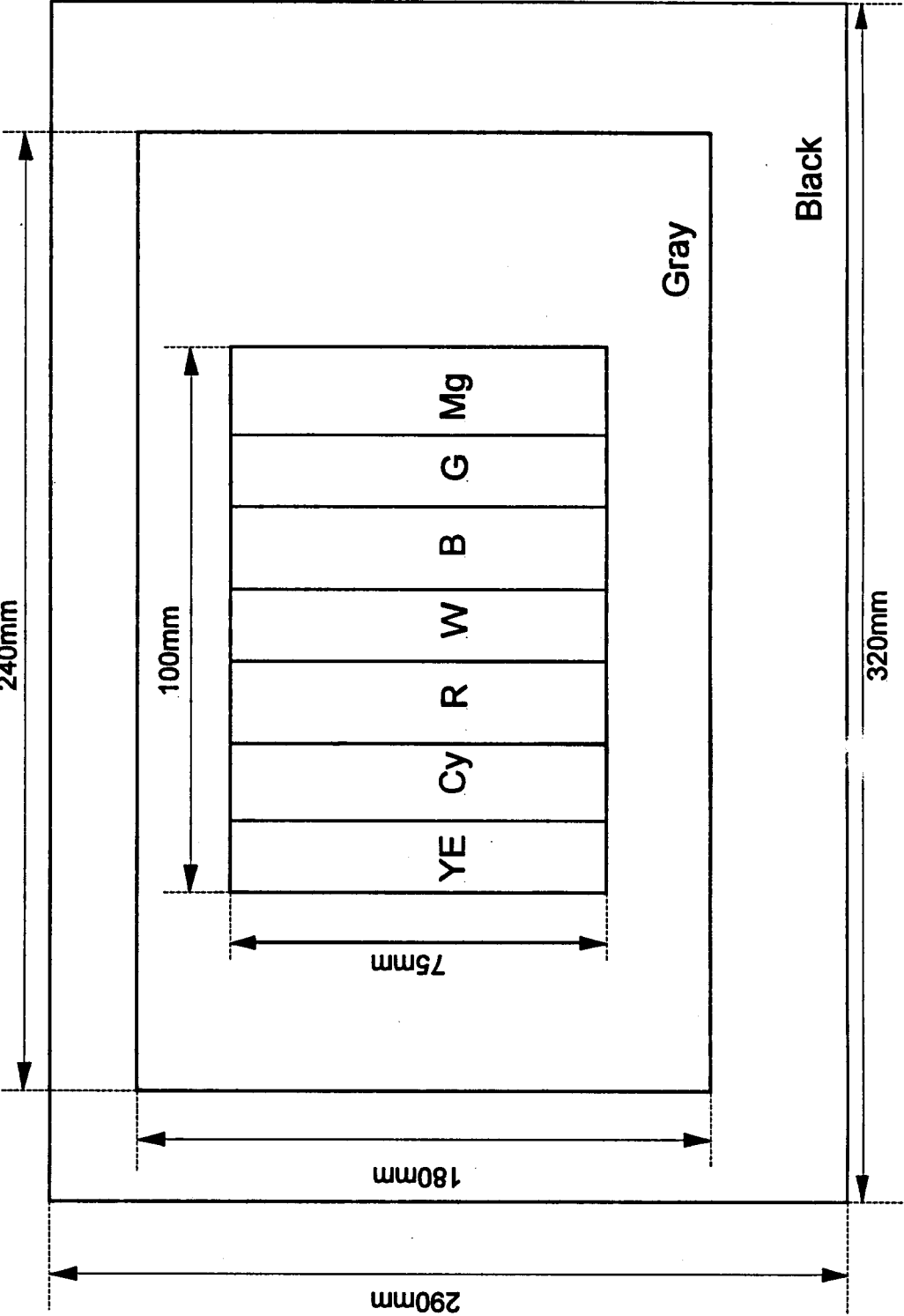
Cable and connector configuration, please see the page later.

6) White balance;Auto (TTL auto tracing white balance)

7) Built-in microphone

- Microphone type;No-directiity electret condensor microphone
- Output voltage(built-in);150mVrms±6dB (input;0.1 Pa at 1KHz)
- Output impedance; 1KΩ ±30%
- S/N ratio (built-in);≥36dB(input;0.2 Pa at 1KHz,weighting filter A)
- Frequency response;<7KHz(-3dB/1KHz)

Proprietary color chart; Transmissive type  
Transmissivity of Gray part; 27%



#### 4 Reliability Tests

Unless otherwise stated, the following reliability tests are conducted (sampling base) to confirm the reliability of the camera in the testing room kept in normal temp. and humidity.

1) Low temp. storage test

To prove that the camera shows no abnormal operation and function after it is stored at ambient temp. of  $-20^{\circ}\text{C}$  for 24H and then left at room temp. for 2H min.

2) Low temp. operation test

To prove that the camera normally operates for continuously 5H at the ambient temp. of  $-10^{\circ}\text{C}$ .

3) High temp. storage test

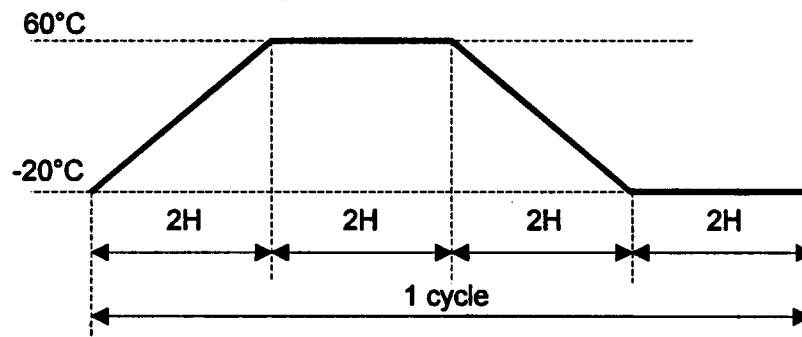
To prove that the camera shows no abnormal operation and function after it is stored at ambient temp. of  $60^{\circ}\text{C}$  for 24H and then left at room temp. for 2H min.

4) High temp. operation test

To prove that the camera normally operates for continuously 5H at the ambient temp. of  $40^{\circ}\text{C}$ .

5) Temp. cycle test

To prove that the camera shows no abnormal operation and function during 5 cycles as stipulated in the following pattern and, then 2H storage at room temp.



6) High humidity test

To prove that the camera shows no abnormal operation and function after the camera has been operated for 24H at ambient temp. of  $30^{\circ}\text{C}$  and relative humidity of 90%RH, and take out from test chamber with water drop removed.

7) Vibration test for unpackaged unit

To prove that the camera shows no abnormal operation and function after vibration test under the condition of  $10\sim 55\sim 10\text{Hz/min}$ . at acceleration speed 3.6G and up/down for 4H and left/right for 2H and back/forward for 2H.

8) Shock test

Three successive shocks shall be applied in both direction of 3 mutually perpendicular axes ( a total of 18 shocks).

Peak acceleration : 50G , Duration of pulse : 10msec

**5. Pixel Defect**

Number of defective pixels not more than 10

Condition:

Temperature 25°C

Shield the light

AGC off

Standard monitor (NTSC)

\*10 pixels in both horizontal edges and 9 pixels in both vertical edges shall be disregarded as a void area.

**6. Operating manual; Not included**

**7. Precautions & Notes**

1) Do not shoot at direct sunlight.

The display picture disappears in case of shooting at direct sunlight.

2) Care shall be used not to damage the camera during installation or removed of the extension cable.

3) These products are made specifically for indoor use.  
(Office and ordinary home-use environment.)

4) Since EMI and CE vary depending on various systems, these agency approvals need to be taken at customer side.

5) Any agency approval for safety is not applicable to this color CCD camera.

Please note that Sharp cannot guarantee the performance and quality under any use other than the conditions stated above, such as circumstances where vibrations are constant as in a moving vehicle, where shocks may occur as in a moving vehicle or where shocks exceed ordinary house-hold or office use.

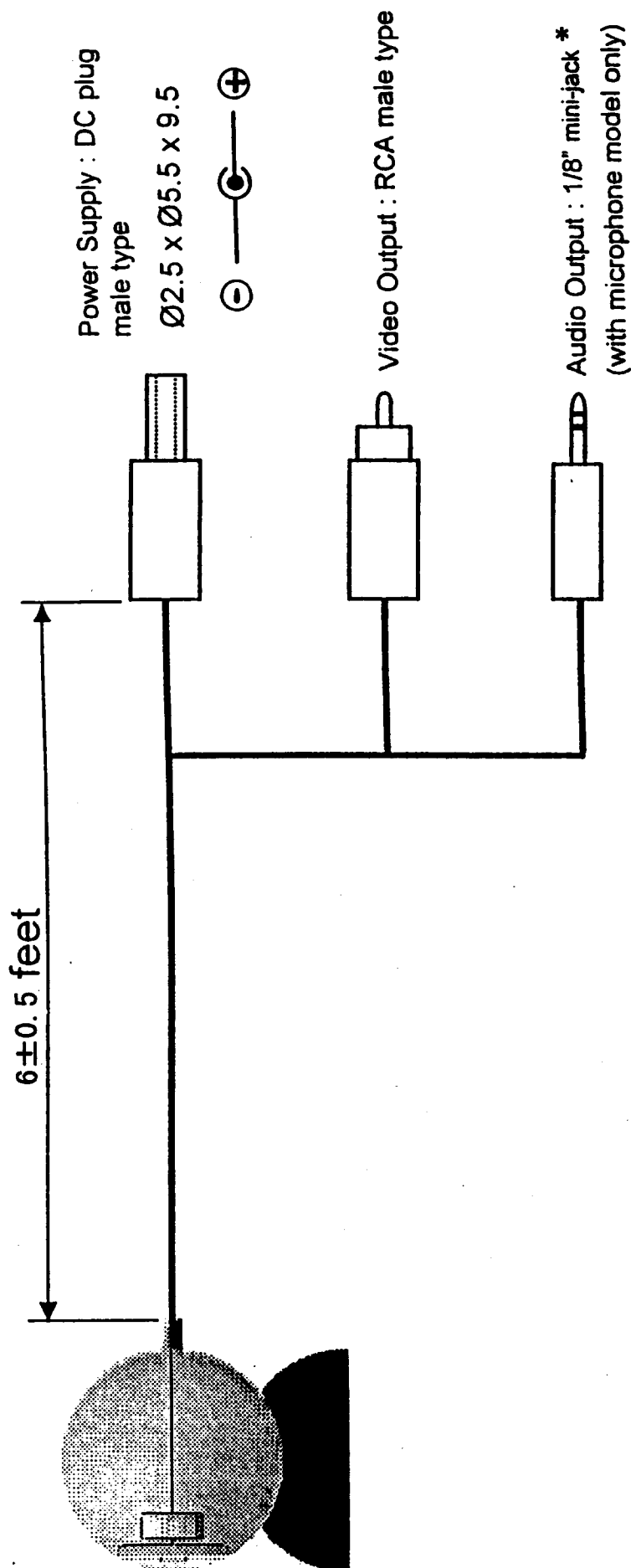
6) Don't touch lens.

Keep lens away from dirt and dust.

Please don't touch lens. Cause it's made from plastic, it's scratched easily.

In case of dust sticking, please blow it off in blower and never touch lens.

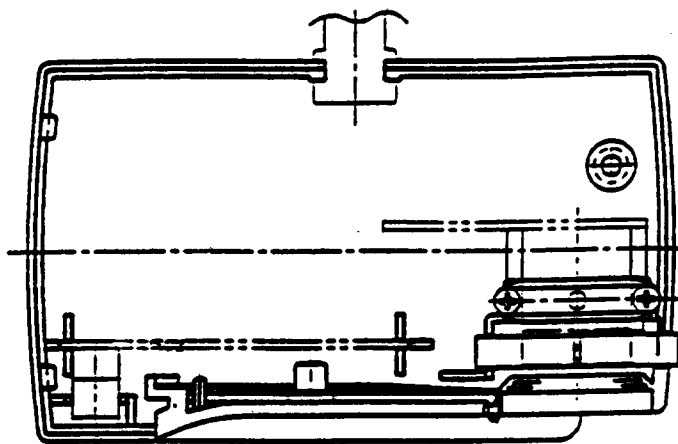
As lens is spoiled, use of the solvent such as alcohol is strict prohibition.



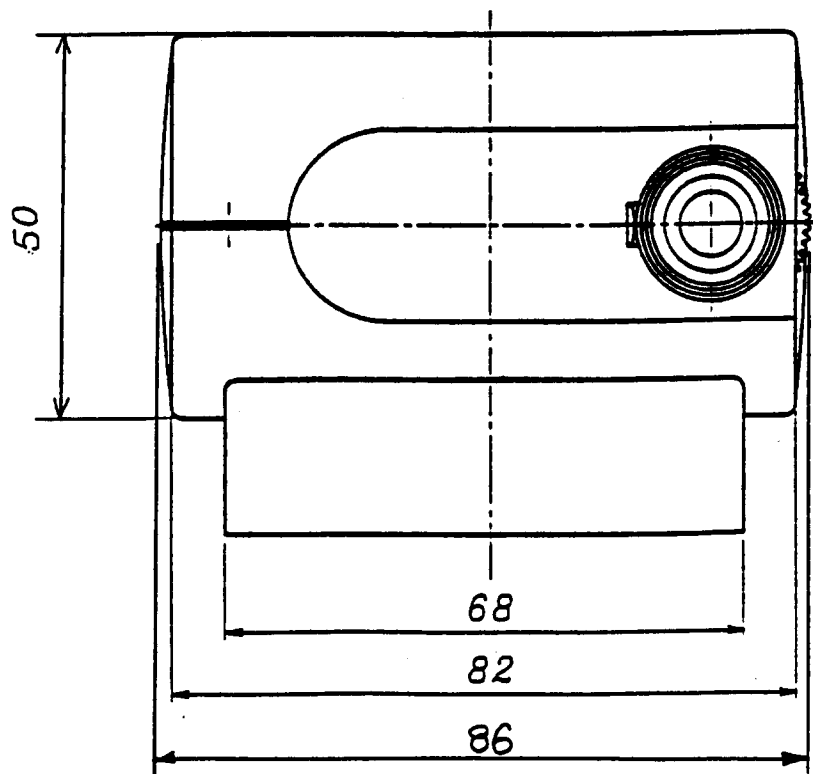
\* stereo type jack and monaural sound (the sound on either side is the same signal)



10

[illegible]

## Privacy



65

一、一般使用

治不法吏

这一片环境

1

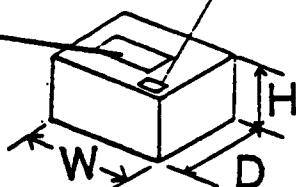
1111

巧  
器



## Serial Number

Model Name  
Production  
Year/Month

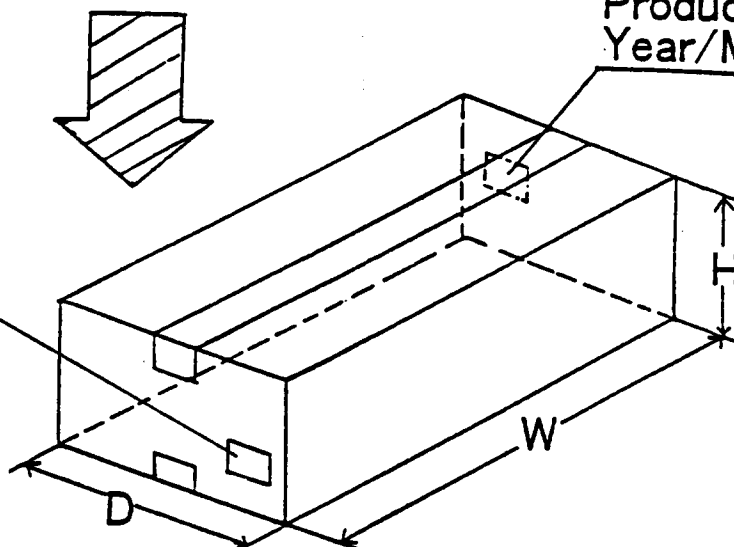


### Individual carton

- **Single wall corrugated fiberboard**
- **Weight :approx. 0.25kg**
- **Size :145(W) × 113(D) × 85(H)mm**

Model Name  
Production  
Year/Month

Model Name  
Production  
Year/Month



## Master carton

- Single wall corrugated fiberboard
- Weight :approx.5.5kg
- Size :580(W) × 305(D) × 190(H)mm
- Quantity:20pieces/CTN

• Production Year/Month

**example:1997.11**

**L**      **G**

          └─ Year Code

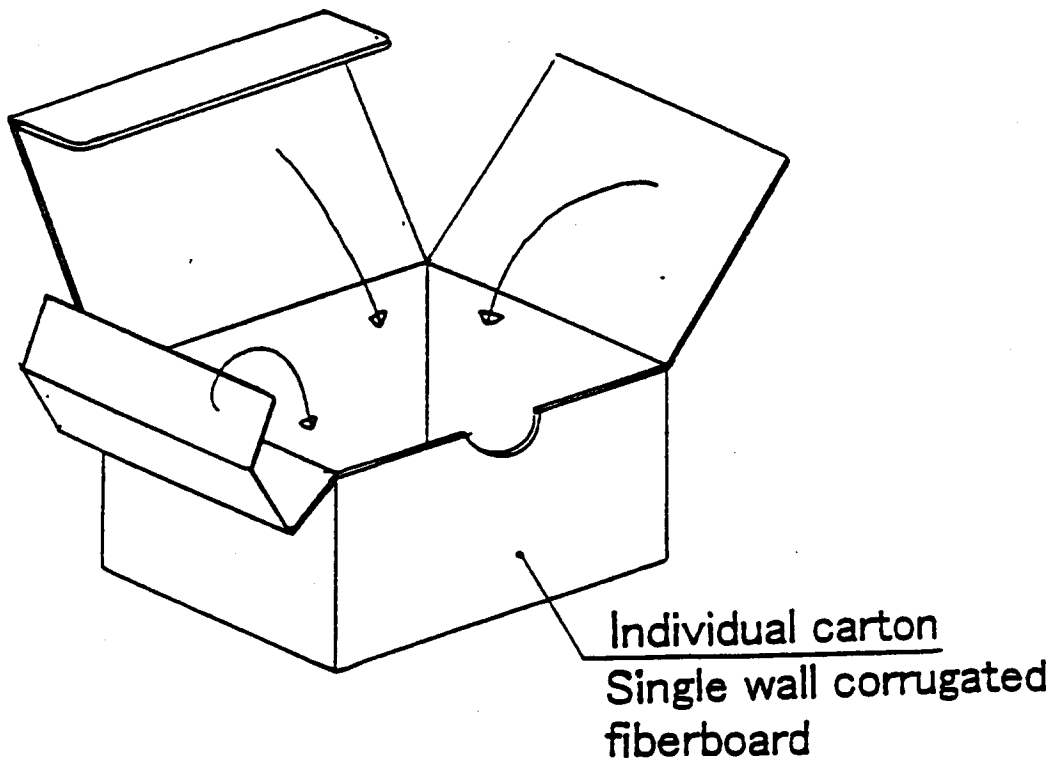
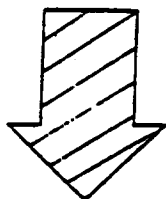
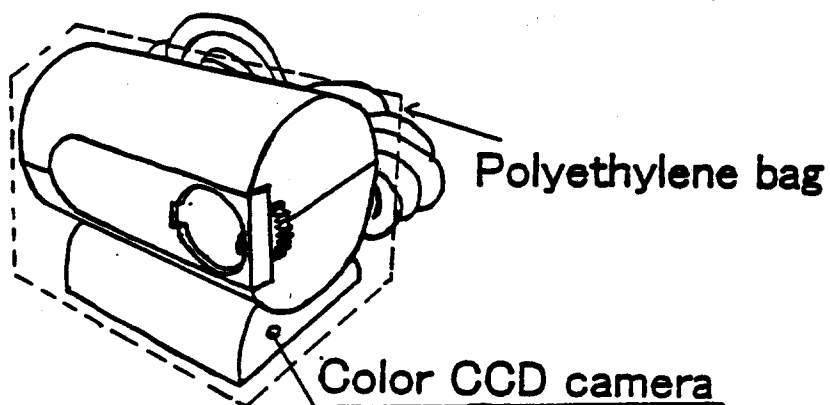
└────────── Month Code

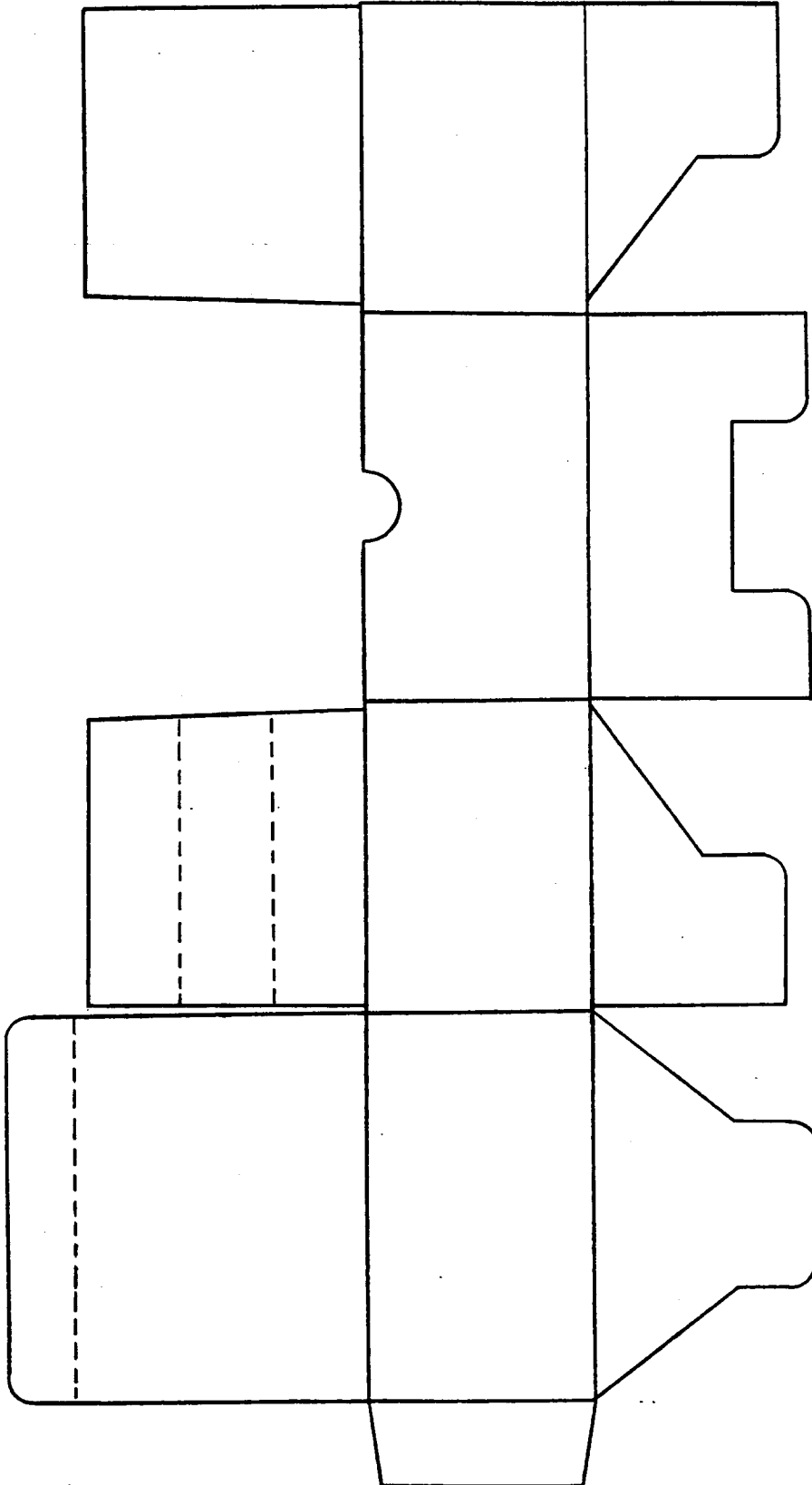
## TABLE

1	2	3	4	5	6	7	8	9	0 or 10	11	12
A	B	C	D	E	F	G	H	J	K	L	M

NO.		PARTS CODE		PROCESS		PIECES		MATERIAL		FINISH		NAME	
								SCALE		UNIT		3角紙	
										A1 A2 A4 (mm)		③ ②	
								APPROVE		CHECK		DESIGN	
												DRAW	
												CHARGE	
DATE		NO.		REVISE		—		X. Minami		Y. Kunagai		M. Suga	
24 Oct 1997								DRAWING NO.		ASSIGN NO.		DRAWING NC.	
HE Business													
Promotion Dept													

## PACKAGE SPECIFICATION





Individual carton

<p>HANDLE WITH CARE</p>	
<p>SHARP. COLOR CCD CAMERA</p>	<p>SHARP. COLOR CCD CAMERA</p> <p>20PIECES</p> <p>SHARP CORPORATION MADE IN JAPAN</p>
<p>SHARP. COLOR CCD CAMERA</p> <p>20PIECES</p>	<p>SHARP. COLOR CCD CAMERA</p> <p>20PIECES</p>

Master carton