

SN74ALS29863

9-BIT TRANSCEIVER

WITH 3-STATE OUTPUTS

SDAS096C – JANUARY 1986 – REVISED JANUARY 1995

- Functionally Equivalent to AMD's AM29863
- Power-Up High-Impedance State
- Package Options Include Plastic Small-Outline (DW) Packages and Standard Plastic (NT) 300-mil DIPs

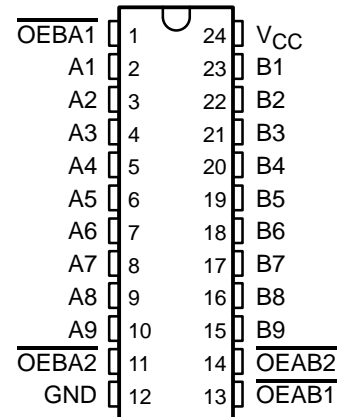
description

This 9-bit transceiver is designed for asynchronous two-way communication between data buses. The control-function implementation allows for maximum flexibility in timing.

This device allows data transmission from the A bus to the B bus or from the B bus to the A bus, depending on the logic levels at the output-enable ($\overline{\text{OEAB1}}$, $\overline{\text{OEAB2}}$, $\overline{\text{OEBA1}}$, and $\overline{\text{OEBA2}}$) inputs.

The SN74ALS29863 is characterized for operation from 0°C to 70°C.

DW OR NT PACKAGE (TOP VIEW)



FUNCTION TABLE

INPUTS				OPERATION
$\overline{\text{OEAB1}}$	$\overline{\text{OEAB2}}$	$\overline{\text{OEBA1}}$	$\overline{\text{OEBA2}}$	
L	L	L	L	Latch A and B
L	L	H	X	A to B
L	L	X	H	
H	X	L	L	B to A
X	H	L	L	
H	X	H	X	Isolation
H	X	X	H	
X	H	X	H	
X	H	H	X	

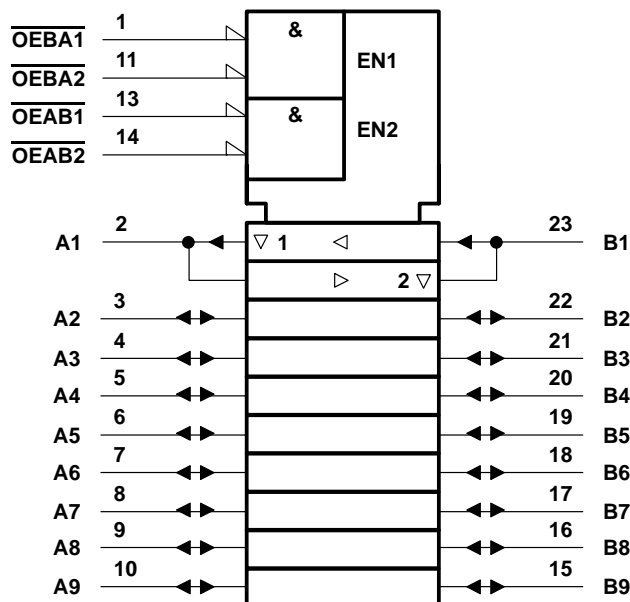
SN74ALS29863

9-BIT TRANSCEIVER

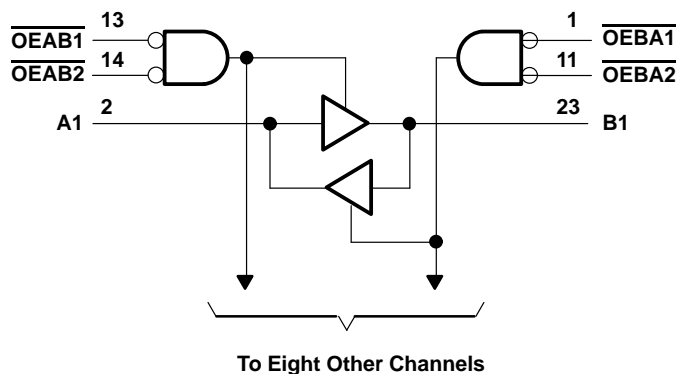
WITH 3-STATE OUTPUTS

SDAS096C – JANUARY 1986 – REVISED JANUARY 1995

logic symbol†



logic diagram (positive logic)



† This symbol is in accordance with ANSI/IEEE Std 91-1984 and IEC Publication 617-12.

absolute maximum ratings over operating free-air temperature range (unless otherwise noted)‡

Supply voltage, V_{CC}	7 V
Input voltage, V_I (all inputs and I/O ports)	5.5 V
Operating free-air temperature range, T_A	0°C to 70°C
Storage temperature range	–65°C to 150°C

‡ Stresses beyond those listed under “absolute maximum ratings” may cause permanent damage to the device. These are stress ratings only, and functional operation of the device at these or any other conditions beyond those indicated under “recommended operating conditions” is not implied. Exposure to absolute-maximum-rated conditions for extended periods may affect device reliability.

recommended operating conditions

		MIN	NOM	MAX	UNIT
V_{CC}	Supply voltage	4.75	5	5.25	V
V_{IH}	High-level input voltage	2			V
V_{IL}	Low-level input voltage			0.8	V
I_{OH}	High-level output current			–24	mA
I_{OL}	Low-level output current			48	mA
T_A	Operating free-air temperature	0		70	°C

SN74ALS29863
9-BIT TRANSCEIVER
WITH 3-STATE OUTPUTS

SDAS096C – JANUARY 1986 – REVISED JANUARY 1995

electrical characteristics over recommended operating free-air temperature range (unless otherwise noted)

PARAMETER		TEST CONDITIONS		MIN	TYP†	MAX	UNIT	
V _{IK}		V _{CC} = 4.75 V, I _I = −18 mA				−1.2	V	
V _{OH}		V _{CC} = 4.75 V	I _{OH} = −15 mA	2.4			V	
			I _{OH} = −24 mA	2				
V _{OL}		V _{CC} = 4.75 V, I _{OL} = 48 mA		0.35		0.5	V	
I _I		V _{CC} = 5.25 V, V _I = 5.5 V				0.1	mA	
I _{IH}	Control inputs	V _{CC} = 5.25 V, V _I = 2.7 V			20		μA	
	A or B ports‡				20			
I _{IL}	Control inputs	V _{CC} = 5.25 V, V _I = 0.4 V			−0.1		mA	
	A or B ports‡				−0.1			
I _{OS} §		V _{CC} = 5.25 V, V _O = 0		−75		−250	mA	
I _{CC}		V _{CC} = 5.25 V				40	65	mA

† All typical values are at $V_{CC} = 5\text{ V}$, $T_A = 25^\circ\text{C}$.

‡ For I/O ports, the parameters I_{IH} and I_{IL} include the off-state output current.

§ Not more than one output should be shorted at a time and duration of the short circuit should not exceed one second.

switching characteristics (see Figure 1)

PARAMETER	FROM (INPUT)	TO (OUTPUT)	TEST CONDITIONS	$V_{CC} = 4.75\text{ V to } 5.25\text{ V}$		UNIT
				MIN	MAX	
t_{PLH}	A or B	B or A	$C_L = 300\text{ pF}$		15	ns
t_{PHL}					15	
t_{PLH}	A or B	B or A	$C_L = 50\text{ pF}$		8	ns
t_{PHL}					8	
t_{PZH}	\overline{OEAB} or \overline{OEBA}	A or B	$C_L = 300\text{ pF}$		20	ns
t_{PZL}					23	
t_{PZH}	\overline{OEAB} or \overline{OEBA}	A or B	$C_L = 50\text{ pF}$		15	ns
t_{PZL}					15	
t_{PHZ}	\overline{OEAB} or \overline{OEBA}	A or B	$C_L = 50\text{ pF}$		17	ns
t_{PLZ}					12	
t_{PHZ}	\overline{OEAB} or \overline{OEBA}	A or B	$C_L = 5\text{ pF}$		9	ns
t_{PLZ}					9	

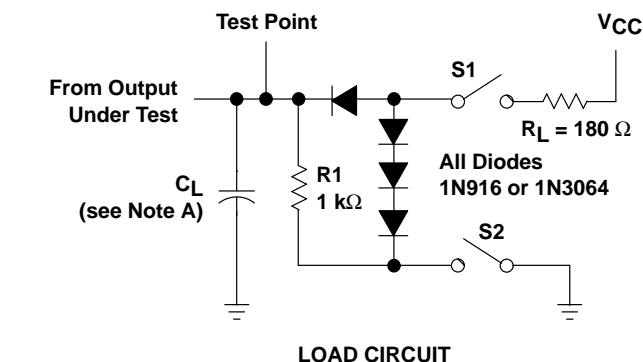
SN74ALS29863

9-BIT TRANSCEIVER

WITH 3-STATE OUTPUTS

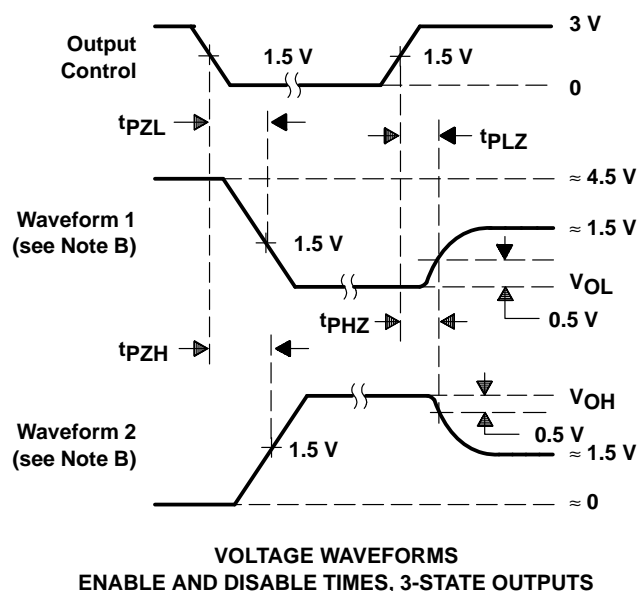
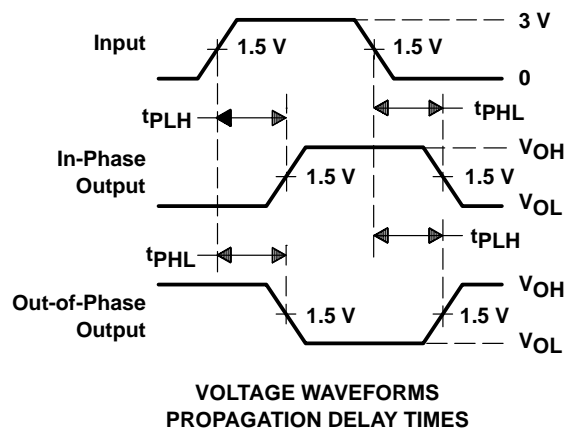
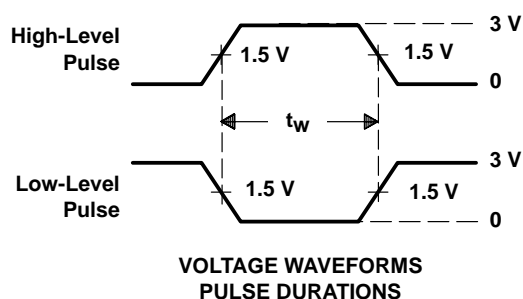
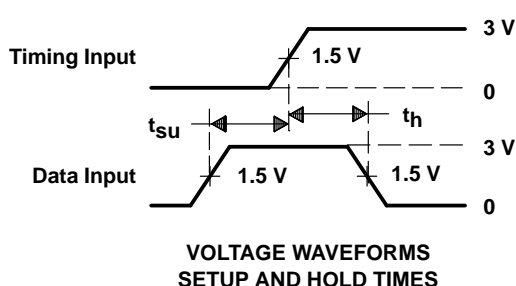
SDAS096C – JANUARY 1986 – REVISED JANUARY 1995

PARAMETER MEASUREMENT INFORMATION



SWITCH POSITION TABLE

TEST	S1	S2
t_{PLH}	Closed	Closed
t_{PHL}	Closed	Closed
t_{PZH}	Open	Closed
t_{PZL}	Closed	Open
t_{PHZ}	Closed	Closed
t_{PLZ}	Closed	Closed



NOTES: A. C_L includes probe and jig capacitance.

B. Waveform 1 is for an output with internal conditions such that the output is low except when disabled by the output control. Waveform 2 is for an output with internal conditions such that the output is high except when disabled by the output control.

C. All input pulses are supplied by generators having the following characteristics: PRR \leq 10 MHz, $Z_O = 50 \Omega$, $t_r \leq 2.5$ ns, $t_f \leq 2.5$ ns.

Figure 1. Load Circuit and Voltage Waveforms

IMPORTANT NOTICE

Texas Instruments (TI) reserves the right to make changes to its products or to discontinue any semiconductor product or service without notice, and advises its customers to obtain the latest version of relevant information to verify, before placing orders, that the information being relied on is current.

TI warrants performance of its semiconductor products and related software to the specifications applicable at the time of sale in accordance with TI's standard warranty. Testing and other quality control techniques are utilized to the extent TI deems necessary to support this warranty. Specific testing of all parameters of each device is not necessarily performed, except those mandated by government requirements.

Certain applications using semiconductor products may involve potential risks of death, personal injury, or severe property or environmental damage ("Critical Applications").

TI SEMICONDUCTOR PRODUCTS ARE NOT DESIGNED, INTENDED, AUTHORIZED, OR WARRANTED TO BE SUITABLE FOR USE IN LIFE-SUPPORT APPLICATIONS, DEVICES OR SYSTEMS OR OTHER CRITICAL APPLICATIONS.

Inclusion of TI products in such applications is understood to be fully at the risk of the customer. Use of TI products in such applications requires the written approval of an appropriate TI officer. Questions concerning potential risk applications should be directed to TI through a local SC sales office.

In order to minimize risks associated with the customer's applications, adequate design and operating safeguards should be provided by the customer to minimize inherent or procedural hazards.

TI assumes no liability for applications assistance, customer product design, software performance, or infringement of patents or services described herein. Nor does TI warrant or represent that any license, either express or implied, is granted under any patent right, copyright, mask work right, or other intellectual property right of TI covering or relating to any combination, machine, or process in which such semiconductor products or services might be or are used.