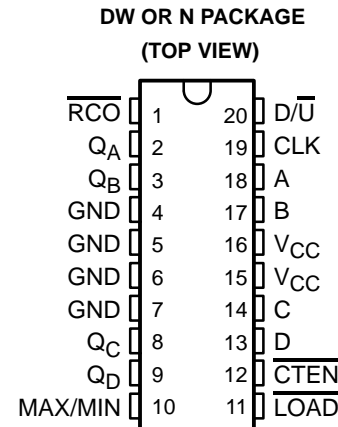


74AC11191 SYNCHRONOUS 4-BIT UP/DOWN BINARY COUNTER

SCAS105A – FEBRUARY 1990 – REVISED APRIL 1993

- Single Down/Up Count Control Line
- Look-Ahead Circuitry Enhances Speed of Cascaded Counters
- Fully Synchronous in Count Modes
- Asynchronously Presetable with Load Control
- Flow-Through Architecture to Optimize PCB Layout
- Center-Pin V_{CC} and GND Configurations to Minimize High-Speed Switching Noise
- EPIC™ (Enhanced-Performance Implanted CMOS) 1- μ m Process
- 500-mA Typical Latch-Up Immunity at 125°C
- Package Options Include Plastic Small-Outline Packages and Standard Plastic 300-mil DIPs



description

The 74AC11191 is a synchronous, 4-bit binary reversible up/down counter. Synchronous counting operation is provided by clocking all flip-flops simultaneously so that the outputs change coincident with each other when instructed by the steering logic. This mode of operation eliminates the output counting spikes normally associated with asynchronous (ripple clock) counters.

The outputs of the four flip-flops are triggered on a low-to-high-level transition of the clock input if the enable input (\overline{CTEN}) is low. A high at \overline{CTEN} inhibits counting. The direction of the count is determined by the level of the down/up (D/\bar{U}) input. When D/\bar{U} is low, the counter counts up and when D/\bar{U} is high, it counts down.

These counters feature a fully independent clock circuit. Changes at the control inputs (\overline{CTEN} and D/\bar{U}) that will modify the operating mode have no effect on the contents of the counter until clocking occurs. The function of the counter will be dictated solely by the condition meeting the stable setup and hold times.

These counters are fully programmable; that is, the outputs may be preset to any number between 0 and 15 by placing a low on the load input and entering the desired data at the data inputs. The outputs will change to agree with the data inputs independently of the level of the clock input. This feature allows the counter to be used as a modulo-N divider by simply modifying the count length with the preset inputs.

Two outputs have been made available to perform the cascading function: ripple clock and maximum/minimum count. The latter output produces a high-level output pulse with a duration approximately equal to one complete cycle of the clock while the count is zero (all outputs low) counting down or maximum (15) counting up. The ripple-clock output (\overline{RCO}) produces a low-level output pulse under those same conditions but only while the clock input is low. The counter can easily be cascaded by feeding the ripple clock output to the enable input of the succeeding counter if parallel clocking is used, or to the clock input if parallel enabling is used. The maximum/minimum count output can be used to accomplish look-ahead for high-speed operation.

The 74AC11191 is characterized for operation from – 40°C to 85°C.

EPIC is a trademark of Texas Instruments Incorporated.

PRODUCTION DATA information is current as of publication date. Products conform to specifications per the terms of Texas Instruments standard warranty. Production processing does not necessarily include testing of all parameters.

**TEXAS
INSTRUMENTS**

POST OFFICE BOX 655303 • DALLAS, TEXAS 75265

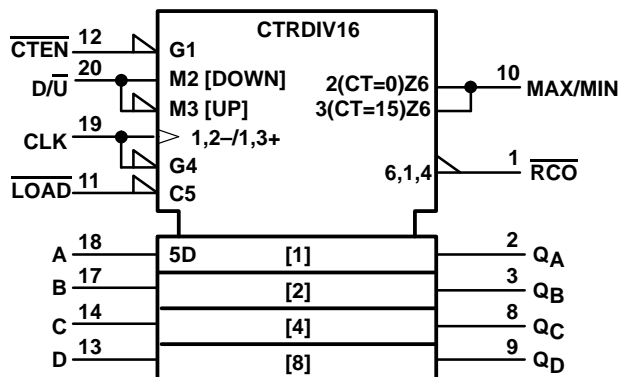
Copyright © 1993, Texas Instruments Incorporated

74AC11191

SYNCHRONOUS 4-BIT UP/DOWN BINARY COUNTER

SCAS105A – FEBRUARY 1990 – REVISED APRIL 1993

logic symbol†

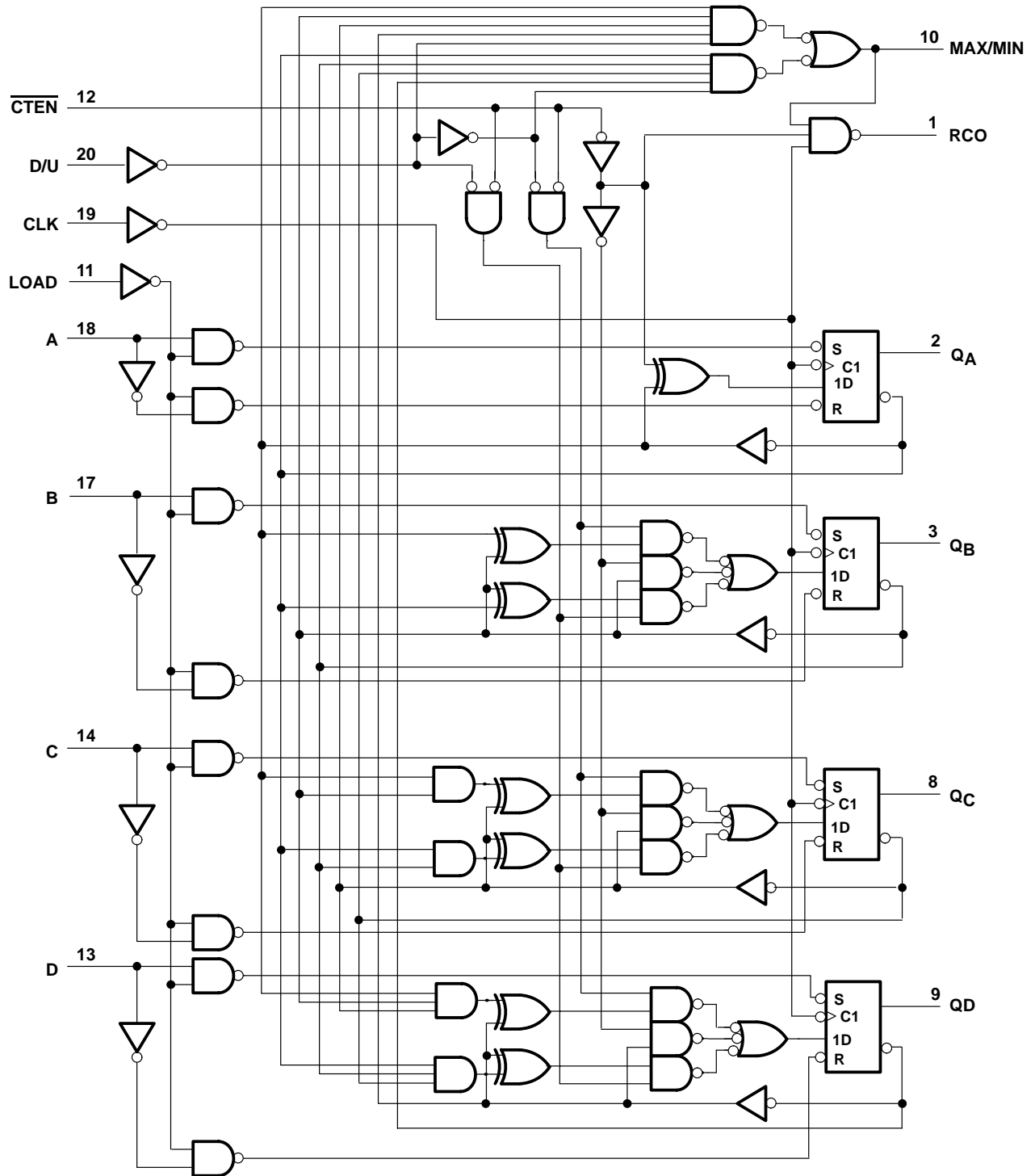


† This symbol is in accordance with ANSI/IEEE Std 91-1984 and IEC Publication 617-12.

74AC11191 SYNCHRONOUS 4-BIT UP/DOWN BINARY COUNTER

SCAS105A – FEBRUARY 1990 – REVISED APRIL 1993

logic diagram (positive logic)



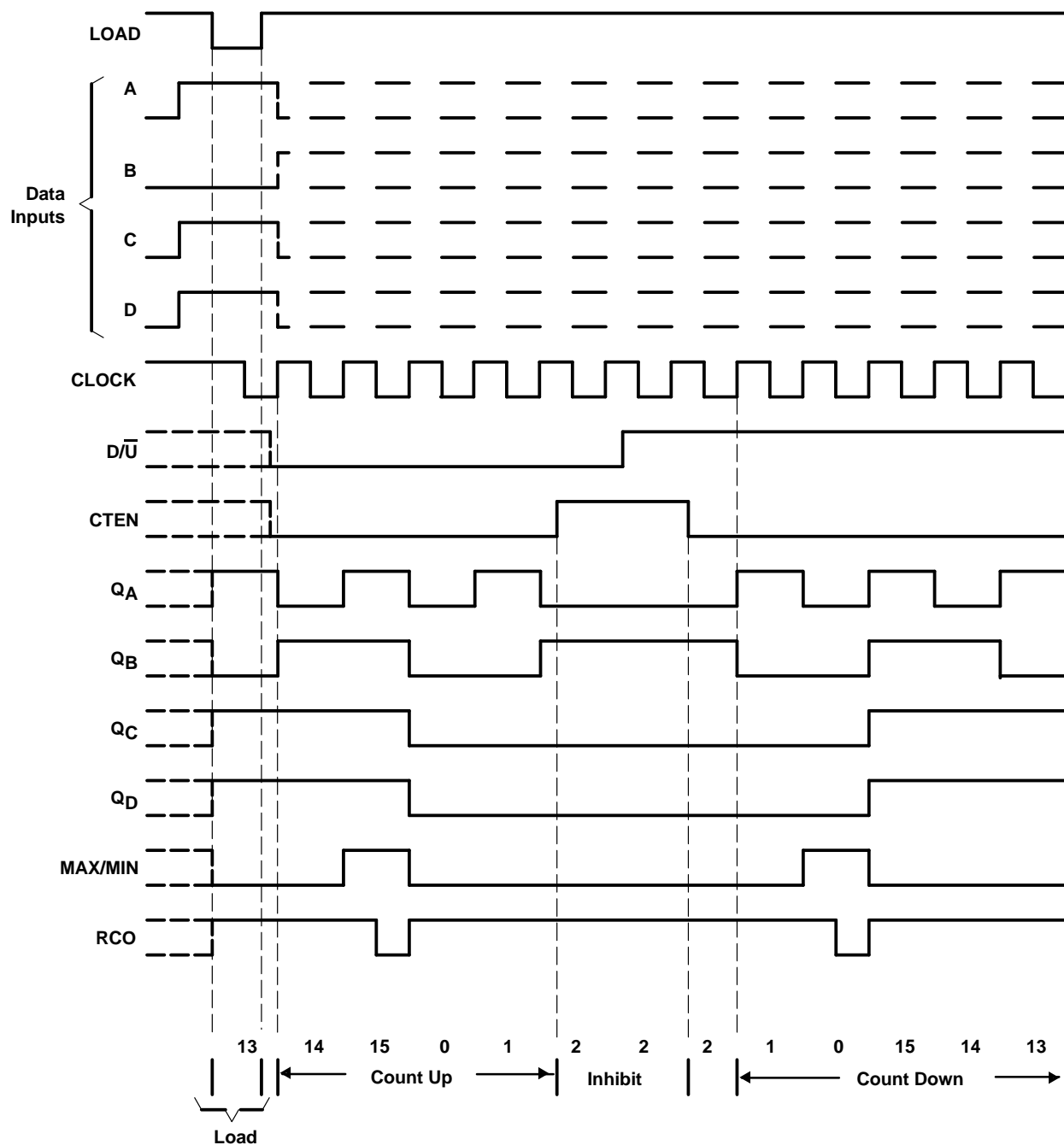
74AC11191 SYNCHRONOUS 4-BIT UP/DOWN BINARY COUNTER

SCAS105A – FEBRUARY 1990 – REVISED APRIL 1993

typical load, count, and inhibit sequences

Illustrated below is the following sequence:

1. Load (preset) to binary thirteen
2. Count up to fourteen, fifteen (maximum), zero, one, and two
3. Inhibit
4. Count down to one, zero (minimum), fifteen, fourteen, and thirteen.



74AC11191

SYNCHRONOUS 4-BIT UP/DOWN BINARY COUNTER

SCAS105A – FEBRUARY 1990 – REVISED APRIL 1993

absolute maximum ratings over operating free-air temperature range (unless otherwise noted)[†]

Supply voltage range, V_{CC}	–0.5 V to 7 V
Input voltage range, V_I (see Note 1)	–0.5 V to $V_{CC} + 0.5$ V
Output voltage range, V_O (see Note 1)	–0.5 V to $V_{CC} + 0.5$ V
Input clamp current, I_{IK} ($V_I < 0$ or $V_I > V_{CC}$)	± 20 mA
Output clamp current, I_{OK} ($V_O < 0$ or $V_O > V_{CC}$)	± 50 mA
Continuous output current, I_O ($V_O = 0$ to V_{CC})	± 50 mA
Continuous current through V_{CC} or GND pins	± 150 mA
Storage temperature range	–65°C to 150°C

[†] Stresses beyond those listed under “absolute maximum ratings” may cause permanent damage to the device. These are stress ratings only and functional operation of the device at these or any other conditions beyond those indicated under “recommended operating conditions” is not implied. Exposure to absolute-maximum-rated conditions for extended periods may affect device reliability.

NOTE 1: The input and output voltage ratings may be exceeded if the input and output current ratings are observed.

recommended operating conditions

		MIN	NOM	MAX	UNIT
V_{CC}	Supply voltage	3	5	5.5	V
V_{IH}	High-level input voltage	$V_{CC} = 3$ V	2.1		V
		$V_{CC} = 4.5$ V	3.15		
		$V_{CC} = 5.5$ V	3.85		
V_{IL}	Low-level input voltage	$V_{CC} = 3$ V		0.9	V
		$V_{CC} = 4.5$ V		1.35	
		$V_{CC} = 5.5$ V		1.65	
V_I	Input voltage	0		V_{CC}	V
V_O	Output voltage	0		V_{CC}	V
I_{OH}	High-level output current	$V_{CC} = 3$ V		–4	mA
		$V_{CC} = 4.5$ V		–24	
		$V_{CC} = 5.5$ V		–24	
I_{OL}	Low-level output current	$V_{CC} = 3$ V		12	mA
		$V_{CC} = 4.5$ V		24	
		$V_{CC} = 5.5$ V		24	
$\Delta t/\Delta v$	Input transition rise or fall rate	0		10	ns/V
T_A	Operating free-air temperature	–40		85	°C

74AC11191

SYNCHRONOUS 4-BIT UP/DOWN BINARY COUNTER

SCAS105A – FEBRUARY 1990 – REVISED APRIL 1993

electrical characteristics over recommended operating free-air temperature range (unless otherwise noted)

PARAMETER	TEST CONDITIONS	V _{CC}	T _A = 25°C			MIN	MAX	UNIT
			MIN	TYP	MAX			
V _{OH}	I _{OH} = – 50 µA	3 V	2.9			2.9		V
		4.5 V	4.4			4.4		
		5.5 V	5.4			5.4		
	I _{OH} = – 4 mA	3 V	2.58			2.48		
		4.5 V	3.94			3.8		
		5.5 V	4.94			4.8		
	I _{OH} = – 75 mA [†]	5.5 V				3.85		
V _{OL}	I _{OL} = 50 µA	3 V			0.1		0.1	V
		4.5 V			0.1		0.1	
		5.5 V			0.1		0.1	
	I _{OL} = 12 mA	3 V			0.36		0.44	
		4.5 V			0.36		0.44	
		5.5 V			0.36		0.44	
	I _{OL} = 75 mA [†]	5.5 V					1.65	
I _I	V _I = V _{CC} or GND	5.5 V			± 0.1		± 1	µA
I _{CC}	V _I = V _{CC} or GND, I _O = 0	5.5 V			8		80	µA
C _i	V _I = V _{CC} or GND	5 V		4				pF

[†] Not more than one output should be tested at a time, and the duration of the test should not exceed 10 ms.

timing requirements over recommended operating free-air temperature range, V_{CC} = 3.3 V ± 0.3 V (unless otherwise noted) (see Figure 1)

		T _A = 25°C		MIN	MAX	UNIT
		MIN	MAX			
f _{clock}	Clock frequency	0	50	0	50	MHz
t _w	Pulse duration	LOAD low		4.8	4.8	ns
		CLK high or low		10	10	
t _{su}	Setup time	Data before LOAD↑		4	4	ns
		CTEN before CLK↑		12.5	12.5	
		D/U before CLK↑		13.5	13.5	
		LOAD inactive before CLK↑		2.5	2.5	
t _h	Hold time	Data after LOAD↑		1	1	ns
		CTEN after CLK↑		0	0	
		D/U after CLK↑		0	0	

74AC11191
SYNCHRONOUS 4-BIT UP/DOWN BINARY COUNTER

SCAS105A – FEBRUARY 1990 – REVISED APRIL 1993

**timing requirements over recommended operating free-air temperature range,
V_{CC} = 5 V ± 0.5 V (unless otherwise noted) (see Figure 1)**

		T _A = 25°C		MIN	MAX	UNIT
		MIN	MAX			
f _{clock}	Clock frequency	0	100	0	100	MHz
t _w	Pulse duration	LOAD low		4	4	ns
		CLK high or low		7.2	7.2	
t _{su}	Setup time	Data before LOAD↑		3	3	ns
		CTEN before CLK↑		8	8	
		D/U before CLK↑		8.5	8.5	
		LOAD inactive before CLK↑		2	2	
t _h	Hold time	Data after LOAD↑		1.5	1.5	ns
		CTEN after CLK↑		0.5	0.5	
		D/U after CLK↑		0	0	

**switching characteristics over recommended operating free-air temperature range,
V_{CC} = 3 V ± 0.3 V (unless otherwise noted) (see Figure 1)**

PARAMETER	FROM (INPUT)	TO (OUTPUT)	T _A = 25°C			MIN	MAX	UNIT
			MIN	TYP	MAX			
f _{max}			50	80		50		MHz
t _{PLH}	LOAD	Any Q	3.7	10.7	13.4	3.7	14.9	ns
t _{PHL}			3.6	9.3	12.3	3.6	14.1	
t _{PLH}	LOAD	MAX/MIN	5	14.2	18.7	5	21.1	ns
t _{PHL}			4.6	12.6	17.5	4.6	19.6	
t _{PLH}	LOAD	RCO	5.2	15.4	20.2	5.2	22.9	ns
t _{PHL}			6	15.7	21.6	6	24.7	
t _{PLH}	A, B, C, or D	Any Q	3.4	9.8	12.3	3.4	13.8	ns
t _{PHL}			3.5	8.9	12.1	3.5	13.7	
t _{PLH}	A, B, C, or D	MAX/MIN	4.7	13.5	18.2	4.7	20.7	ns
t _{PHL}			4	11.8	17.1	4	19.3	
t _{PLH}	A, B, C, or D	RCO	5	14.7	19.9	5	22.5	ns
t _{PHL}			5.3	15.1	21.1	5.3	24.3	
t _{PLH}	CLK	RCO	2.8	8.7	11.5	2.8	12.9	ns
t _{PHL}			2.8	7.8	10.6	2.8	11.9	
t _{PLH}	CLK	Any Q	2.2	7.5	9.8	2.2	11.1	ns
t _{PHL}			2.7	7.5	11	2.7	12.7	
t _{PLH}	CLK	MAX/MIN	3.7	9.9	12.2	3.7	13.8	ns
t _{PHL}			4.1	10.2	14.4	4.1	16	
t _{PLH}	D/U	RCO	4.1	11.2	14.4	4.1	15.9	ns
t _{PHL}			4.1	10.2	14.3	4.1	16.5	
t _{PLH}	D/U	MAX/MIN	2.7	8.7	11.5	2.7	12.7	ns
t _{PHL}			3.1	8.3	11.8	3.1	13.6	
t _{PLH}	CTEN	RCO	2.5	7.2	9	2.5	10.3	ns
t _{PHL}			2.6	6.6	8.8	2.6	10	

74AC11191

SYNCHRONOUS 4-BIT UP/DOWN BINARY COUNTER

SCAS105A – FEBRUARY 1990 – REVISED APRIL 1993

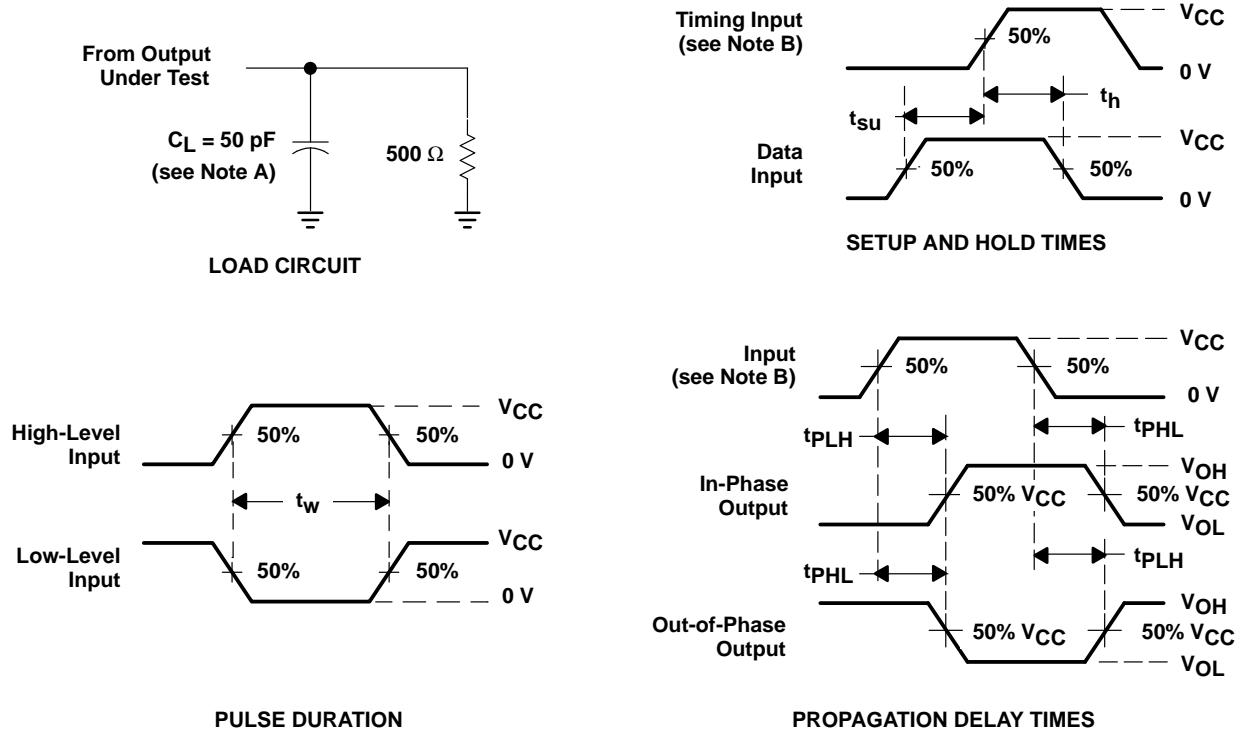
switching characteristics over recommended operating free-air temperature range,
 $V_{CC} = 5\text{ V} \pm 0.5\text{ V}$ (unless otherwise noted) (see Figure 1)

PARAMETER	FROM (INPUT)	TO (OUTPUT)	$T_A = 25^\circ\text{C}$			MIN	MAX	UNIT
			MIN	TYP	MAX			
f_{\max}			100	135		100		MHz
t_{PLH}	LOAD	Any Q	3.1	6.7	9.4	3.1	10.6	ns
t_{PHL}			3	6.4	9	3	10.2	
t_{PLH}	LOAD	MAX/MIN	4.3	8.8	12.5	4.3	14.3	ns
t_{PHL}			4	8.4	12	4	13.7	
t_{PLH}	LOAD	RCO	4.5	9.7	13.7	4.5	15.4	ns
t_{PHL}			5	10.1	14.4	5	16.3	
t_{PLH}	A, B, C, or D	Any Q	2.9	6.2	8.7	2.9	9.8	ns
t_{PHL}			3	6.1	8.7	3	9.8	
t_{PLH}	A, B, C, or D	MAX/MIN	4.1	8.4	12.2	4.1	13.7	ns
t_{PHL}			3.5	8	11.8	3.5	13.4	
t_{PLH}	A, B, C, or D	RCO	4.3	9.2	13.5	4.3	15.1	ns
t_{PHL}			4.7	9.7	14	4.7	16	
t_{PLH}	CLK	RCO	2.4	5.9	8.4	2.4	9.1	ns
t_{PHL}			2.9	5.6	7.7	2.9	8.7	
t_{PLH}	CLK	Any Q	1.9	5.2	7.6	1.9	8.4	ns
t_{PHL}			2.4	5.4	8	2.4	9.4	
t_{PLH}	CLK	MAX/MIN	3	6.5	8.8	3	10.4	ns
t_{PHL}			3.6	7.1	10.4	3.6	10.8	
t_{PLH}	D/U	RCO	3.5	7.2	10.2	3.5	11.3	ns
t_{PHL}			3.5	6.9	10	3.5	11.5	
t_{PLH}	D/U	MAX/MIN	2.3	5.7	8.1	2.3	9.1	ns
t_{PHL}			2.7	5.9	8.6	2.7	9.7	
t_{PLH}	CTEN	RCO	2.1	4.9	6.8	2.1	7.7	ns
t_{PHL}			2.2	4.8	6.7	2.2	7.7	

operating characteristics, $V_{CC} = 5\text{ V}$, $T_A = 25^\circ\text{C}$

PARAMETER		TEST CONDITIONS		TYP	UNIT
C_{pd}	Power dissipation capacitance	$C_L = 50\text{ pF}$	$f = 1\text{ MHz}$	66	pF

PARAMETER MEASUREMENT INFORMATION



- NOTES: A. C_L includes probe and jig capacitance.
 B. Input pulses are supplied by generators having the following characteristics: $PRR \leq 10 \text{ MHz}$, $Z_O = 50 \Omega$, $t_r \leq 2.5 \text{ ns}$, $t_f \leq 2.5 \text{ ns}$.
 C. The outputs are measured one at a time with one input transition per measurement.

Figure 1. Load Circuit and Voltage Waveforms

IMPORTANT NOTICE

Texas Instruments (TI) reserves the right to make changes to its products or to discontinue any semiconductor product or service without notice, and advises its customers to obtain the latest version of relevant information to verify, before placing orders, that the information being relied on is current.

TI warrants performance of its semiconductor products and related software to the specifications applicable at the time of sale in accordance with TI's standard warranty. Testing and other quality control techniques are utilized to the extent TI deems necessary to support this warranty. Specific testing of all parameters of each device is not necessarily performed, except those mandated by government requirements.

Certain applications using semiconductor products may involve potential risks of death, personal injury, or severe property or environmental damage ("Critical Applications").

TI SEMICONDUCTOR PRODUCTS ARE NOT DESIGNED, INTENDED, AUTHORIZED, OR WARRANTED TO BE SUITABLE FOR USE IN LIFE-SUPPORT APPLICATIONS, DEVICES OR SYSTEMS OR OTHER CRITICAL APPLICATIONS.

Inclusion of TI products in such applications is understood to be fully at the risk of the customer. Use of TI products in such applications requires the written approval of an appropriate TI officer. Questions concerning potential risk applications should be directed to TI through a local SC sales office.

In order to minimize risks associated with the customer's applications, adequate design and operating safeguards should be provided by the customer to minimize inherent or procedural hazards.

TI assumes no liability for applications assistance, customer product design, software performance, or infringement of patents or services described herein. Nor does TI warrant or represent that any license, either express or implied, is granted under any patent right, copyright, mask work right, or other intellectual property right of TI covering or relating to any combination, machine, or process in which such semiconductor products or services might be or are used.