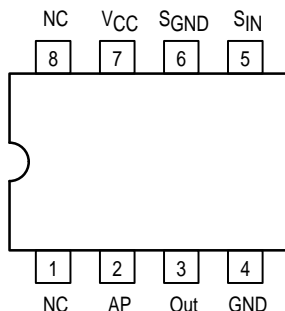


225MHz Prescaler

The MC12023 is a prescaler which will divide by 64. This device may be operated over a supply voltage range of 3.2 to 5.5V.

- 225MHz Toggle Frequency
- Low-Power 4.8mA Maximum at 5.5V
- Operating Supply Voltage of 3.2 to 5.5V
- Connecting Pins 2 and 3 Allows Driving One TTL Load

Pinout: 8-Lead Plastic (Top View)



MAXIMUM RATINGS

Symbol	Characteristic	Range	Unit
V _{CC}	Power Supply Voltage	0 to +8.0	Vdc
T _A	Operating Temperature Range	0 to +70	°C
T _{stg}	Storage Temperature Range	-65 to +175	°C

ELECTRICAL CHARACTERISTICS (V_{CC} = 3.2 to 5.5V; T_A = 0 to +70°C)

Symbol	Characteristic	Min	Typ	Max	Unit
f _{max} f _{min}	Toggle Frequency (Sine Wave Input)	225		35	MHz
I _{CC}	Supply Current at 5.5V		3.5 ³	4.8	mA
V _{OH}	Output Voltage HIGH ¹ (V _{CC} = 3.2V) ²	1.2	1.4		V
V _{OH}	Output Voltage HIGH ¹ (V _{CC} = 5.0V) ²	2.5			V
V _{OL}	Output Voltage LOW ¹ (I _{sink} = 2.0mA)			0.5	V
V _{in}	Input Voltage Sensitivity 35MHz 50-225MHz	400 200		800 800	mVpp

1 Pin 2 connected to Pin 3

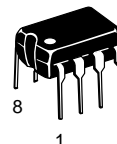
2 I_{source} = 50μA

3 V_{CC} = 4.5V

MC12023

MECL PLL COMPONENTS

÷64
PRESCALER

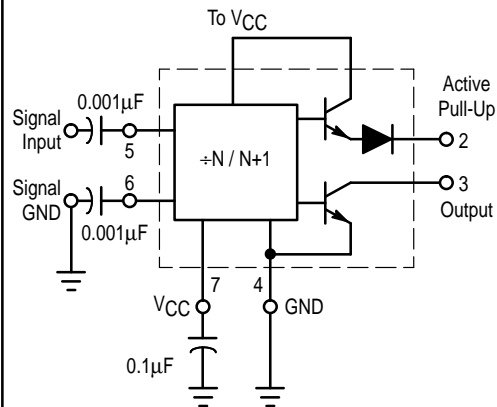


P SUFFIX
PLASTIC PACKAGE
CASE 626-05

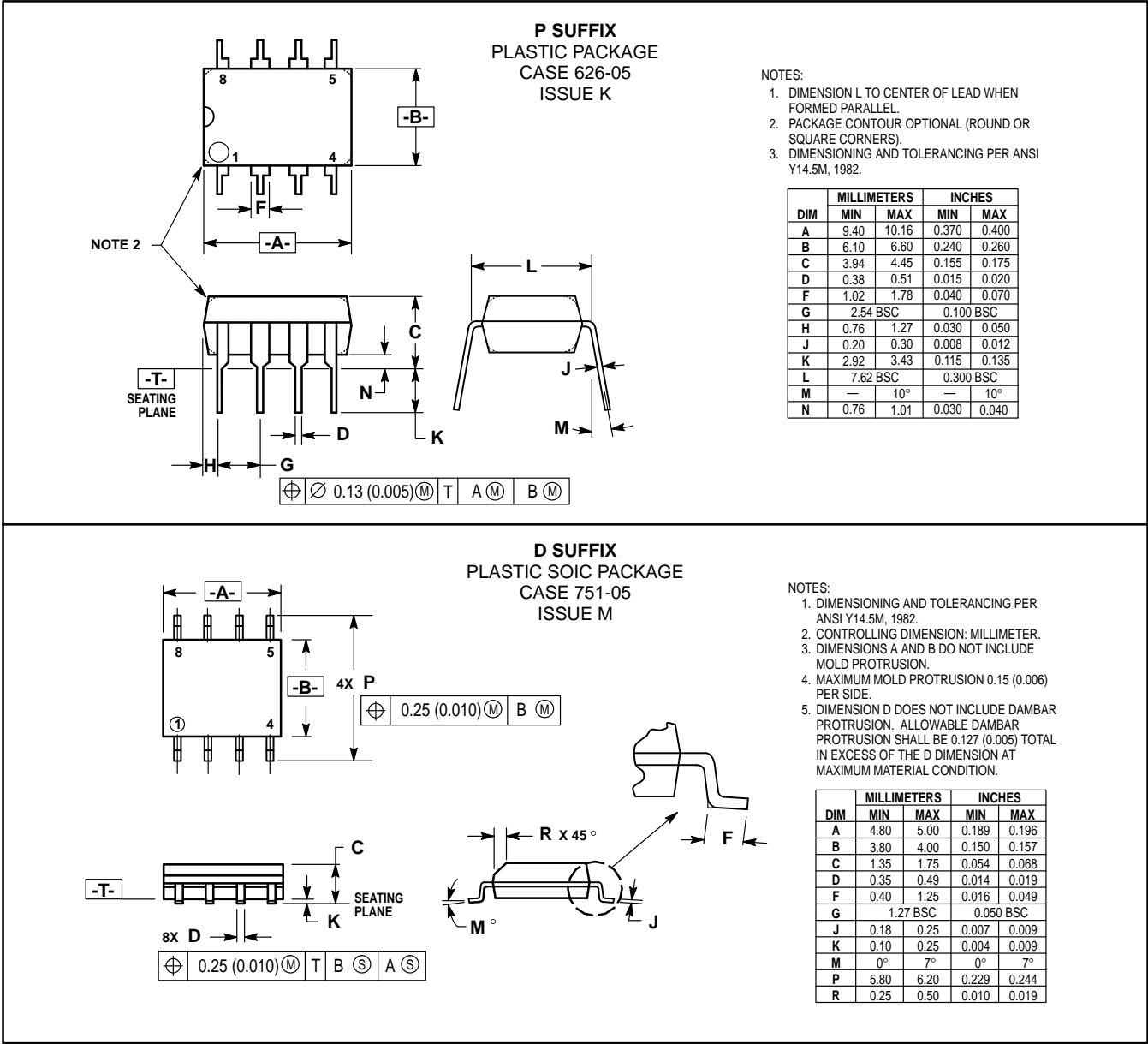
D SUFFIX
PLASTIC SOIC PACKAGE
CASE 751-05




PRESCALER BLOCK DIAGRAM



OUTLINE DIMENSIONS



Motorola reserves the right to make changes without further notice to any products herein. Motorola makes no warranty, representation or guarantee regarding the suitability of its products for any particular purpose, nor does Motorola assume any liability arising out of the application or use of any product or circuit, and specifically disclaims any and all liability, including without limitation consequential or incidental damages. "Typical" parameters can and do vary in different applications. All operating parameters, including "Typicals" must be validated for each customer application by customer's technical experts. Motorola does not convey any license under its patent rights nor the rights of others. Motorola products are not designed, intended, or authorized for use as components in systems intended for surgical implant into the body, or other applications intended to support or sustain life, or for any other application in which the failure of the Motorola product could create a situation where personal injury or death may occur. Should Buyer purchase or use Motorola products for any such unintended or unauthorized application, Buyer shall indemnify and hold Motorola and its officers, employees, subsidiaries, affiliates, and distributors harmless against all claims, costs, damages, and expenses, and reasonable attorney fees arising out of, directly or indirectly, any claim of personal injury or death associated with such unintended or unauthorized use, even if such claim alleges that Motorola was negligent regarding the design or manufacture of the part. Motorola and  are registered trademarks of Motorola, Inc. Motorola, Inc. is an Equal Opportunity/Affirmative Action Employer.

Literature Distribution Centers:

USA: Motorola Literature Distribution; P.O. Box 20912; Phoenix, Arizona 85036.
EUROPE: Motorola Ltd.; European Literature Centre; 88 Tanners Drive, Blakelands, Milton Keynes, MK14 5BP, England.
JAPAN: Nippon Motorola Ltd.; 4-32-1, Nishi-Gotanda, Shinagawa-ku, Tokyo 141 Japan.
ASIA-PACIFIC: Motorola Semiconductors H.K. Ltd.; Silicon Harbour Center, No. 2 Dai King Street, Tai Po Industrial Estate, Tai Po, N.T., Hong Kong.

