

# 74VCXR162245

## Advance Information

### Low-Voltage 1.8/2.5/3.3V 16-Bit Transceiver

#### With 26 $\Omega$ Series Resistors on A and B Outputs and 3.6 V-Tolerant Inputs and Outputs (3-State, Non-Inverting)

The 74VCXR162245 is an advanced performance, non-inverting 16-bit transceiver. It is designed for very high-speed, very low-power operation in 1.8 V, 2.5 V or 3.3 V systems.

When operating at 2.5 V (or 1.8 V) the part is designed to tolerate voltages it may encounter on either inputs or outputs when interfacing to 3.3 V busses. It is guaranteed to be over-voltage tolerant to 3.6 V.

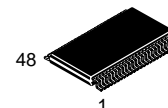
The VCXR162245 is designed with byte control. It can be operated as two separate octals, or with the controls tied together, as a 16-bit wide function. It is designed with 26  $\Omega$  series resistors in each of the A and B outputs to reduce noise. The Transmit/Receive ( $T/\overline{Rn}$ ) inputs determine the direction of data flow through the bi-directional transceiver. Transmit (active-HIGH) enables data from A ports to B ports; Receive (active-LOW) enables data from B to A ports. The Output Enable inputs ( $\overline{OEn}$ ), when HIGH, disable both A and B ports by placing them in a HIGH Z condition.

- Designed for Low Voltage Operation:  $V_{CC} = 1.65\text{--}3.6\text{ V}$
- 3.6 V Tolerant Inputs and Outputs
- 26  $\Omega$  Series Resistors on All Outputs
- High Speed Operation: 3.4 ns max for 3.0 to 3.6 V  
4.3 ns max for 2.3 to 2.7 V  
8.6 ns max for 1.65 to 1.95 V
- Static Drive:  $\pm 24\text{ mA}$  Drive at 3.0 V  
 $\pm 18\text{ mA}$  Drive at 2.3 V  
 $\pm 3\text{ mA}$  Drive at 1.65 V
- Supports Live Insertion and Withdrawal
- $I_{OFF}$  Specification Guarantees High Impedance When  $V_{CC} = 0\text{ V}$
- Near Zero Static Supply Current in All Three Logic States (20  $\mu\text{A}$ )  
Substantially Reduces System Power Requirements
- Latchup Performance Exceeds  $\pm 300\text{ mA}$  @ 125°C
- ESD Performance: Human Body Model >2000 V; Machine Model >200 V



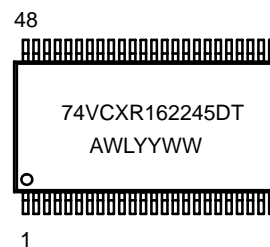
ON Semiconductor

<http://onsemi.com>



TSSOP-48  
DT SUFFIX  
CASE 1201

#### MARKING DIAGRAM



A = Assembly Location  
WL = Wafer Lot  
YY = Year  
WW = Work Week

#### PIN NAMES

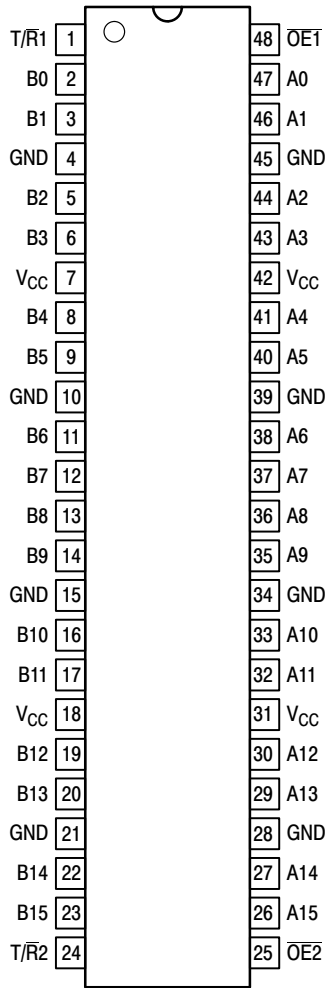
Pins	Function
$\overline{OEn}$	Output Enable Inputs
$T/\overline{Rn}$	Transmit/Receive Inputs
A0-A15	Side A Inputs or 3-State Outputs
B0-B15	Side B Inputs or 3-State Outputs

#### ORDERING INFORMATION

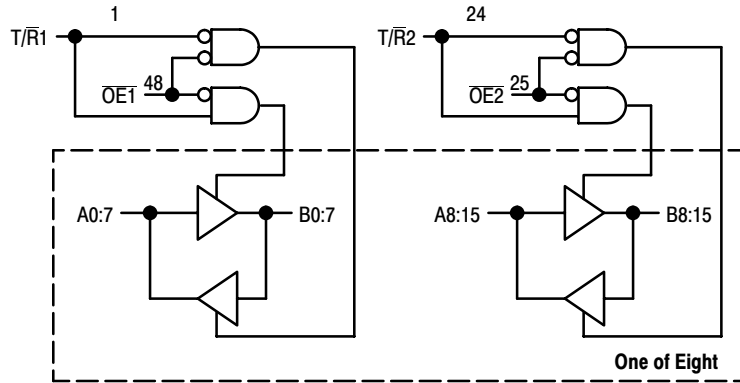
Device	Package	Shipping
74VCXR162245DT	TSSOP	39 / Rail
74VCXR162245DTR	TSSOP	2500 / Reel

This document contains information on a new product. Specifications and information herein are subject to change without notice.

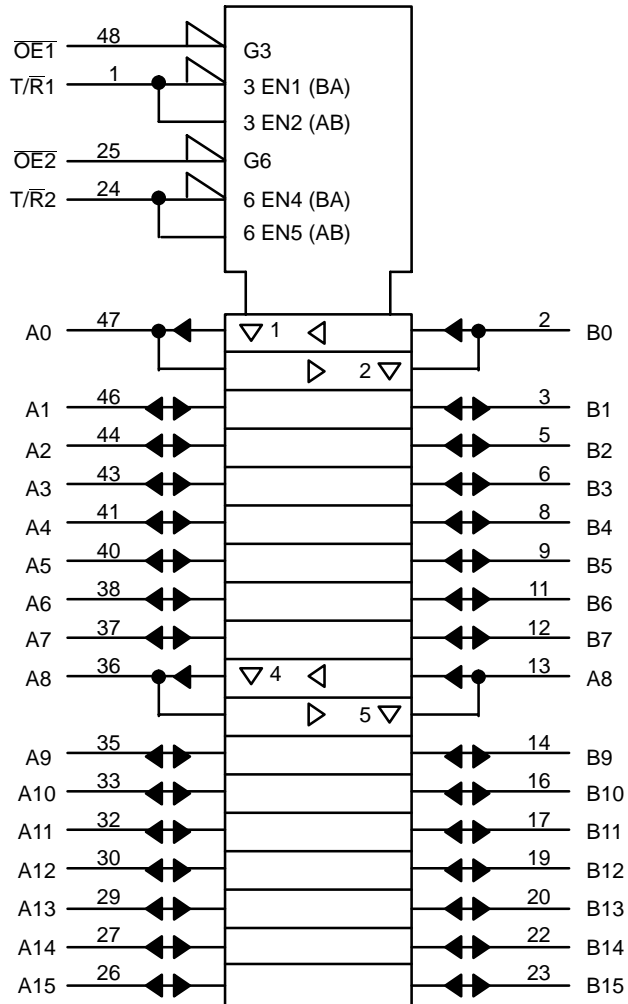
# 74VCXR162245



**Figure 1. 48-Lead Pinout**  
(Top View)



**Figure 2. Logic Diagram**



Inputs		Outputs	Inputs		Outputs
OE1	T/R1		OE2	T/R2	
L	L	Bus B0:7 Data to Bus A0:7	L	L	Bus B8:15 Data to Bus A8:15
L	H	Bus A0:7 Data to Bus B0:7	L	H	Bus A8:15 Data to Bus B8:15
H	X	High Z State on A0:7, B0:7	H	X	High Z State on A8:15, B8:15

H = High Voltage Level; L = Low Voltage Level; X = High or Low Voltage Level and Transitions Are Acceptable

**ABSOLUTE MAXIMUM RATINGS\***

Symbol	Parameter	Value	Condition	Unit
$V_{CC}$	DC Supply Voltage	$-0.5$ to $+4.6$		V
$V_I$	DC Input Voltage	$-0.5 \leq V_I \leq +4.6$		V
$V_O$	DC Output Voltage	$-0.5 \leq V_O \leq +4.6$	Output in 3-State	V
		$-0.5 \leq V_O \leq V_{CC} + 0.5$	Note 1.; Outputs Active	V
$I_{IK}$	DC Input Diode Current	$-50$	$V_I < GND$	mA
$I_{OK}$	DC Output Diode Current	$-50$	$V_O < GND$	mA
		$+50$	$V_O > V_{CC}$	mA
$I_O$	DC Output Source/Sink Current	$\pm 50$		mA
$I_{CC}$	DC Supply Current Per Supply Pin	$\pm 100$		mA
$I_{GND}$	DC Ground Current Per Ground Pin	$\pm 100$		mA
$T_{STG}$	Storage Temperature Range	$-65$ to $+150$		$^{\circ}C$

\* Absolute maximum continuous ratings are those values beyond which damage to the device may occur. Exposure to these conditions or conditions beyond those indicated may adversely affect device reliability. Functional operation under absolute-maximum-rated conditions is not implied.

1.  $I_O$  absolute maximum rating must be observed.

**RECOMMENDED OPERATING CONDITIONS**

Symbol	Parameter	Min	Typ	Max	Unit
$V_{CC}$	Supply Voltage	1.65	3.3	3.6	V
		1.2	3.3	3.6	
$V_I$	Input Voltage	$-0.3$		3.6	V
$V_O$	Output Voltage	0		$V_{CC}$	V
		0		3.6	

**A Outputs**

$I_{OH}$	HIGH Level Output Current, $V_{CC} = 3.0V - 3.6V$			$-12$	mA
$I_{OL}$	LOW Level Output Current, $V_{CC} = 3.0V - 3.6V$			12	mA
$I_{OH}$	HIGH Level Output Current, $V_{CC} = 2.3V - 2.7V$			$-8$	mA
$I_{OL}$	LOW Level Output Current, $V_{CC} = 2.3V - 2.7V$			8	mA
$I_{OH}$	HIGH Level Output Current, $V_{CC} = 1.65 - 1.95V$			$-4$	mA
$I_{OL}$	LOW Level Output Current, $V_{CC} = 1.65 - 1.95V$			4	mA

**B Outputs**

$I_{OH}$	HIGH Level Output Current, $V_{CC} = 3.0V - 3.6V$			$-12$	mA
$I_{OL}$	LOW Level Output Current, $V_{CC} = 3.0V - 3.6V$			12	mA
$I_{OH}$	HIGH Level Output Current, $V_{CC} = 2.3V - 2.7V$			$-8$	mA
$I_{OL}$	LOW Level Output Current, $V_{CC} = 2.3V - 2.7V$			8	mA
$I_{OH}$	HIGH Level Output Current, $V_{CC} = 1.65 - 1.95V$			$-4$	mA
$I_{OL}$	LOW Level Output Current, $V_{CC} = 1.65 - 1.95V$			4	mA
$T_A$	Operating Free-Air Temperature	$-40$		$+85$	$^{\circ}C$
$\Delta t/\Delta V$	Input Transition Rise or Fall Rate, $V_{IN}$ from 0.8V to 2.0V, $V_{CC} = 3.0V$	0		10	ns/V

## DC ELECTRICAL CHARACTERISTICS

Symbol	Characteristic	Condition	$T_A = -40^{\circ}\text{C to } +85^{\circ}\text{C}$		Unit
			Min	Max	
$V_{IH}$	HIGH Level Input Voltage (Note 2.)	$1.65\text{V} \leq V_{CC} < 2.3\text{V}$	$0.7 \times V_{CC}$		V
		$2.3\text{V} \leq V_{CC} \leq 2.7\text{V}$	1.6		
		$2.7\text{V} < V_{CC} \leq 3.6\text{V}$	2.0		
$V_{IL}$	LOW Level Input Voltage (Note 2.)	$1.65\text{V} \leq V_{CC} < 2.3\text{V}$		$0.3 \times V_{CC}$	V
		$2.3\text{V} \leq V_{CC} \leq 2.7\text{V}$		0.7	
		$2.7\text{V} < V_{CC} \leq 3.6\text{V}$		0.8	
$V_{OH}$	HIGH Level Output Voltage	$1.65\text{V} \leq V_{CC} \leq 3.6\text{V}; I_{OH} = -100\mu\text{A}$	$V_{CC} - 0.2$		V
		$V_{CC} = 1.65\text{V}; I_{OH} = -3\text{mA}$	1.4		
		$V_{CC} = 2.3\text{V}; I_{OH} = -4\text{mA}$	2.0		
		$V_{CC} = 2.3\text{V}; I_{OH} = -6\text{mA}$	1.8		
		$V_{CC} = 2.3\text{V}; I_{OH} = -8\text{mA}$	1.7		
		$V_{CC} = 2.7\text{V}; I_{OH} = -6\text{mA}$	2.2		
		$V_{CC} = 3.0\text{V}; I_{OH} = -8\text{mA}$	2.4		
		$V_{CC} = 3.0\text{V}; I_{OH} = -12\text{mA}$	2.2		
$V_{OL}$	LOW Level Output Voltage	$1.65\text{V} \leq V_{CC} \leq 3.6\text{V}; I_{OL} = 100\mu\text{A}$		0.2	V
		$V_{CC} = 1.65\text{V}; I_{OL} = 3\text{mA}$		0.3	
		$V_{CC} = 2.3\text{V}; I_{OL} = 6\text{mA}$		0.4	
		$V_{CC} = 2.3\text{V}; I_{OL} = 8\text{mA}$		0.6	
		$V_{CC} = 2.7\text{V}; I_{OL} = 6\text{mA}$		0.4	
		$V_{CC} = 3.0\text{V}; I_{OL} = 8\text{mA}$		0.55	
		$V_{CC} = 3.0\text{V}; I_{OL} = 12\text{mA}$		0.8	
$I_I$	Input Leakage Current	$1.65\text{V} \leq V_{CC} \leq 3.6\text{V}; 0\text{V} \leq V_I \leq 3.6\text{V}$		$\pm 5.0$	$\mu\text{A}$
$I_{OZ}$	3-State Output Current	$1.65\text{V} \leq V_{CC} \leq 3.6\text{V}; 0\text{V} \leq V_O \leq 3.6\text{V}; V_I = V_{IH} \text{ or } V_{IL}$		$\pm 10$	$\mu\text{A}$
$I_{OFF}$	Power-Off Leakage Current	$V_{CC} = 0\text{V}; V_I \text{ or } V_O = 3.6\text{V}$		10	$\mu\text{A}$
$I_{CC}$	Quiescent Supply Current (Note 3.)	$1.65\text{V} \leq V_{CC} \leq 3.6\text{V}; V_I = \text{GND or } V_{CC}$		20	$\mu\text{A}$
		$1.65\text{V} \leq V_{CC} \leq 3.6\text{V}; 3.6\text{V} \leq V_I, V_O \leq 3.6\text{V}$		$\pm 20$	$\mu\text{A}$
$\Delta I_{CC}$	Increase in $I_{CC}$ per Input	$2.7\text{V} < V_{CC} \leq 3.6\text{V}; V_{IH} = V_{CC} - 0.6\text{V}$		750	$\mu\text{A}$

2. These values of  $V_I$  are used to test DC electrical characteristics only.

3. Outputs disabled or 3-state only.

# 74VCXR162245

## AC CHARACTERISTICS (Note 4.; $t_R = t_F = 2.0\text{ns}$ ; $C_L = 30\text{pF}$ ; $R_L = 500\Omega$ )

Symbol	Parameter	Waveform	Limits						Unit
			T <sub>A</sub> = −40°C to +85°C						
			V <sub>CC</sub> = 3.0V to 3.6V		V <sub>CC</sub> = 2.3V to 2.7V		V <sub>CC</sub> = 1.65 to1.95V		
			Min	Max	Min	Max	Min	Max	
t <sub>PLH</sub> t <sub>PHL</sub>	Propagation Delay Input to Output (A > B)	1	0.8 0.8	3.4 3.4	1.0 1.0	4.3 4.3	1.5 1.5	5.7 5.7	ns
t <sub>PLH</sub> t <sub>PHL</sub>	Propagation Delay Input to Output (B > A)	1	0.8 0.8	3.4 3.4	1.0 1.0	4.3 4.3	1.5 1.5	5.7 5.7	ns
t <sub>PZH</sub> t <sub>PZL</sub>	Output Enable Time to High and Low Level (A > B)	2	0.8 0.8	4.2 4.2	1.0 1.0	5.7 5.7	1.5 1.5	7.6 7.6	ns
t <sub>PZH</sub> t <sub>PZL</sub>	Output Enable Time to High and Low Level (B > A)	2	0.8 0.8	4.2 4.2	1.0 1.0	5.7 5.7	1.5 1.5	7.6 7.6	ns
t <sub>PHZ</sub> t <sub>PLZ</sub>	Output Disable Time From High and Low Level (A > B)	2	0.8 0.8	4.1 4.1	1.0 1.0	4.8 4.8	1.5 1.5	5.7 5.7	ns
t <sub>PHZ</sub> t <sub>PLZ</sub>	Output Disable Time From High and Low Level (B > A)	2	0.8 0.8	4.1 4.1	1.0 1.0	4.8 4.8	1.5 1.5	5.7 5.7	ns
t <sub>OSHL</sub> t <sub>OSLH</sub>	Output-to-Output Skew (Note 5.)			0.5 0.5		0.5 0.5		0.5 0.5	ns

4. For  $C_L = 50\text{pF}$ , add approximately 300ps to the AC maximum specification.

5. Skew is defined as the absolute value of the difference between the actual propagation delay for any two separate outputs of the same device. The specification applies to any outputs switching in the same direction, either HIGH-to-LOW ( $t_{OSHL}$ ) or LOW-to-HIGH ( $t_{OSLH}$ ); parameter guaranteed by design.

## DYNAMIC SWITCHING CHARACTERISTICS

Symbol	Characteristic	Condition	$T_A = +25^\circ\text{C}$	Unit
			Typ	
$V_{OLP}$	Dynamic LOW Peak Voltage (Note 6.)	$V_{CC} = 1.8\text{V}, C_L = 30\text{pF}, V_{IH} = V_{CC}, V_{IL} = 0\text{V}$	0.15	V
		$V_{CC} = 2.5\text{V}, C_L = 30\text{pF}, V_{IH} = V_{CC}, V_{IL} = 0\text{V}$	0.25	
		$V_{CC} = 3.3\text{V}, C_L = 30\text{pF}, V_{IH} = V_{CC}, V_{IL} = 0\text{V}$	0.35	
$V_{OLV}$	Dynamic LOW Valley Voltage (Note 6.)	$V_{CC} = 1.8\text{V}, C_L = 30\text{pF}, V_{IH} = V_{CC}, V_{IL} = 0\text{V}$	-0.15	V
		$V_{CC} = 2.5\text{V}, C_L = 30\text{pF}, V_{IH} = V_{CC}, V_{IL} = 0\text{V}$	-0.25	
		$V_{CC} = 3.3\text{V}, C_L = 30\text{pF}, V_{IH} = V_{CC}, V_{IL} = 0\text{V}$	-0.35	
$V_{OHV}$	Dynamic HIGH Valley Voltage (Note 7.)	$V_{CC} = 1.8\text{V}, C_L = 30\text{pF}, V_{IH} = V_{CC}, V_{IL} = 0\text{V}$	1.55	V
		$V_{CC} = 2.5\text{V}, C_L = 30\text{pF}, V_{IH} = V_{CC}, V_{IL} = 0\text{V}$	2.05	
		$V_{CC} = 3.3\text{V}, C_L = 30\text{pF}, V_{IH} = V_{CC}, V_{IL} = 0\text{V}$	2.65	

6. Number of outputs defined as "n". Measured with "n-1" outputs switching from HIGH-to-LOW or LOW-to-HIGH. The remaining output is measured in the LOW state.

7. Number of outputs defined as "n". Measured with "n-1" outputs switching from HIGH-to-LOW or LOW-to-HIGH. The remaining output is measured in the HIGH state.

# 74VCXR162245

## CAPACITIVE CHARACTERISTICS

Symbol	Parameter	Condition	Typical	Unit
$C_{IN}$	Input Capacitance	Note 8.	6	pF
$C_{OUT}$	Output Capacitance	Note 8.	7	pF
$C_{PD}$	Power Dissipation Capacitance	Note 8., 10MHz	20	pF

8.  $V_{CC} = 1.8, 2.5$  or  $3.3V$ ;  $V_I = 0V$  or  $V_{CC}$ .

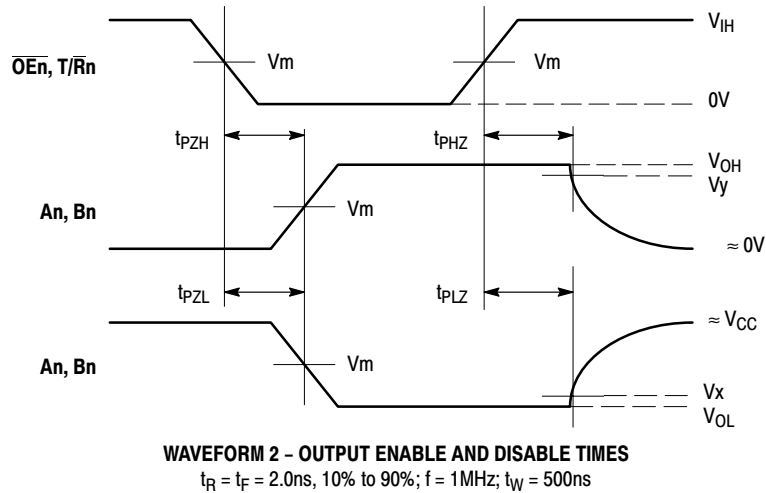
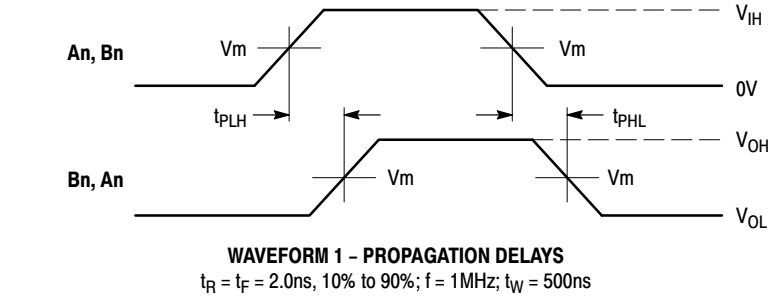
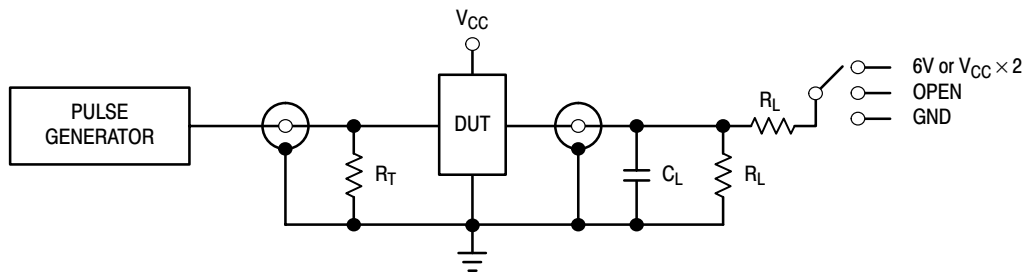


Figure 3. AC Waveforms

Symbol	$V_{CC}$		
	$3.3V \pm 0.3V$	$2.5V \pm 0.2V$	$1.8V \pm 0.15V$
$V_{IH}$	2.7V	$V_{CC}$	$V_{CC}$
$V_m$	1.5V	$V_{CC}/2$	$V_{CC}/2$
$V_x$	$V_{OL} + 0.3V$	$V_{OL} + 0.15V$	$V_{OL} + 0.15V$
$V_y$	$V_{OH} - 0.3V$	$V_{OH} - 0.15V$	$V_{OH} - 0.15V$



## 74VCXR162245

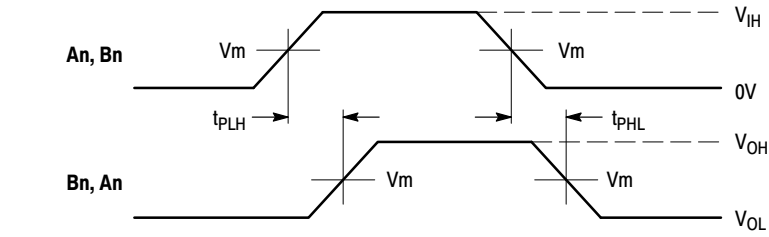
TEST	SWITCH
$t_{PLH}$ , $t_{PHL}$	Open
$t_{PZL}$ , $t_{PLZ}$	6V at $V_{CC} = 3.3 \pm 0.3V$ ; $V_{CC} \times 2$ at $V_{CC} = 2.5 \pm 0.2V$ ; $1.8V \pm 0.15V$
$t_{PZH}$ , $t_{PHZ}$	GND

$C_L = 30pF$  or equivalent (Includes jig and probe capacitance)

$R_L = 500\Omega$  or equivalent

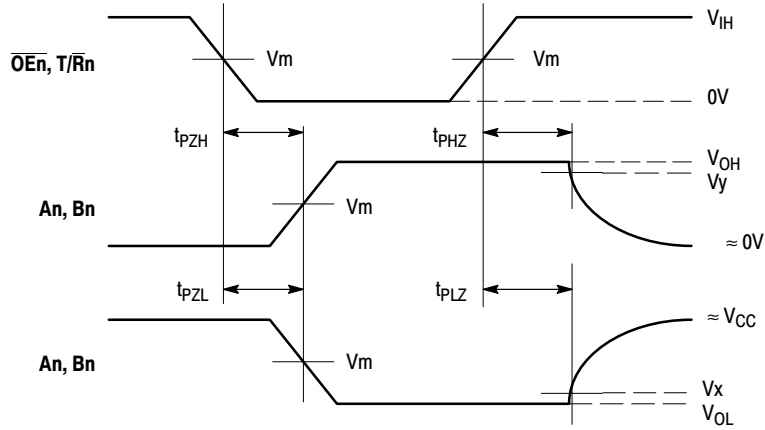
$R_T = Z_{OUT}$  of pulse generator (typically  $50\Omega$ )

**Figure 4. Test Circuit**



**WAVEFORM 3 - PROPAGATION DELAYS**

$t_R = t_F = 2.0ns$ , 10% to 90%;  $f = 1MHz$ ;  $t_W = 500ns$



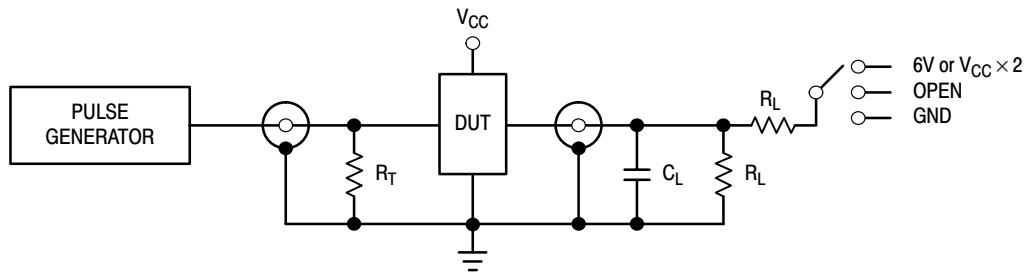
**WAVEFORM 4 - OUTPUT ENABLE AND DISABLE TIMES**

$t_R = t_F = 2.0ns$ , 10% to 90%;  $f = 1MHz$ ;  $t_W = 500ns$

**Figure 5. AC Waveforms**

Symbol	$V_{CC}$	
	$3.3V \pm 0.3V$	$2.7V$
$V_{IH}$	$2.7V$	$2.7V$
$V_m$	$1.5V$	$1.5V$
$V_x$	$V_{OL} + 0.3V$	$V_{OL} + 0.3V$
$V_y$	$V_{OH} - 0.3V$	$V_{OH} - 0.3V$

# 74VCXR162245



TEST	SWITCH
$t_{PLH}$ , $t_{PHL}$	Open
$t_{PZL}$ , $t_{PLZ}$	6V at $V_{CC} = 3.3 \pm 0.3V$ ; $V_{CC} \times 2$ at $V_{CC} = 2.5 \pm 0.2V$ ; $1.8 \pm 0.15V$
$t_{PZH}$ , $t_{PHZ}$	GND

$C_L = 50pF$  or equivalent (Includes jig and probe capacitance)

$R_L = 500\Omega$  or equivalent

$R_T = Z_{OUT}$  of pulse generator (typically  $50\Omega$ )

**Figure 6. Test Circuit**

## AC CHARACTERISTICS ( $t_R = t_F = 2.0ns$ ; $C_L = 50pF$ ; $R_L = 500\Omega$ )

Symbol	Parameter	Waveform	Limits				Unit
			T <sub>A</sub> = −40°C to +85°C				
			V <sub>CC</sub> = 3.0V to 3.6V		V <sub>CC</sub> = 2.7V		
			Min	Max	Min	Max	
t <sub>PLH</sub> t <sub>PHL</sub>	Propagation Delay Input to Output (A > B)	3	1.0 1.0	4.2 4.2		4.7 4.7	ns
t <sub>PLH</sub> t <sub>PHL</sub>	Propagation Delay Input to Output (B > A)	3	1.0 1.0	4.2 4.2		4.7 4.7	ns
t <sub>PZH</sub> t <sub>PZL</sub>	Output Enable Time to High and Low Level (A > B)	4	1.0 1.0	5.6 5.6		6.7 6.7	ns
t <sub>PZH</sub> t <sub>PZL</sub>	Output Enable Time to High and Low Level (B > A)	4	1.0 1.0	5.6 5.6		6.7 6.7	ns
t <sub>PHZ</sub> t <sub>PLZ</sub>	Output Disable Time From High and Low Level (A > B)	4	1.0 1.0	5.5 5.5		5.7 5.7	ns
t <sub>PHZ</sub> t <sub>PLZ</sub>	Output Disable Time From High and Low Level (B > A)	4	1.0 1.0	5.5 5.5		5.7 5.7	ns
t <sub>OSHL</sub> t <sub>OSLH</sub>	Output-to-Output Skew (Note 9.)			0.5 0.5		0.5 0.5	ns

9. Skew is defined as the absolute value of the difference between the actual propagation delay for any two separate outputs of the same device. The specification applies to any outputs switching in the same direction, either HIGH-to-LOW ( $t_{OSHL}$ ) or LOW-to-HIGH ( $t_{OSLH}$ ); parameter guaranteed by design.

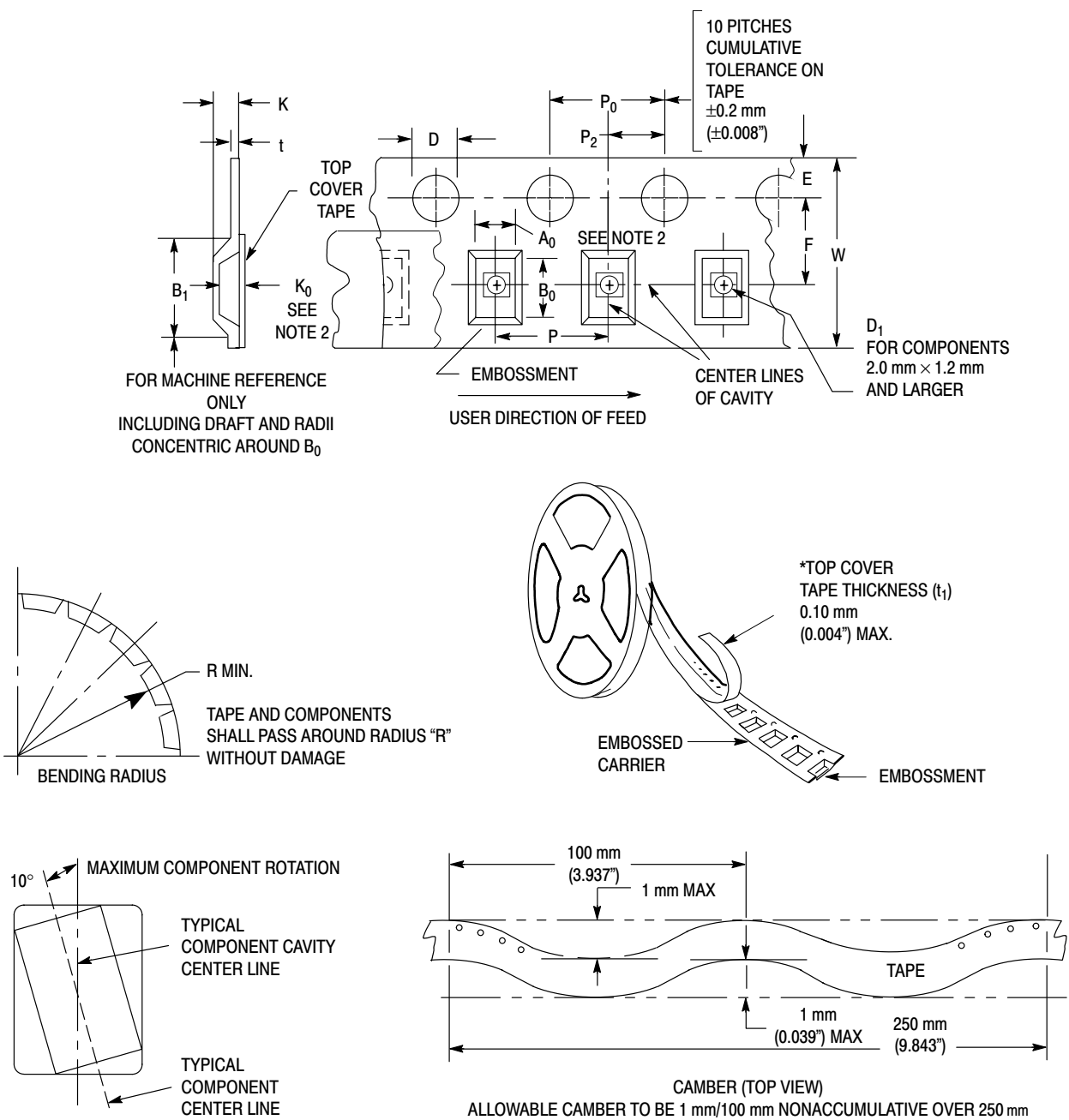


Figure 7. Carrier Tape Specifications

**EMBOSSED CARRIER DIMENSIONS** (See Notes 1 and 2)

Tape Size	B <sub>1</sub> Max	D	D <sub>1</sub>	E	F	K	P	P <sub>0</sub>	P <sub>2</sub>	R	T	W
24mm	20.1mm (0.791")	1.5 + 0.1mm -0.0 (0.059 +0.004" -0.0)	1.5mm Min (0.060")	1.75 ±0.1 mm (0.069 ±0.004")	11.5 ±0.10 mm (0.453 ±0.004")	11.9 mm Max (0.468")	16.0 ±0.1 mm (0.63 ±0.004")	4.0 ±0.1 mm (0.157 ±0.004")	2.0 ±0.1 mm (0.079 ±0.004")	30 mm (1.18")	0.6 mm (0.024")	24.3 mm (0.957")

1. Metric Dimensions Govern—English are in parentheses for reference only.
2. A<sub>0</sub>, B<sub>0</sub>, and K<sub>0</sub> are determined by component size. The clearance between the components and the cavity must be within 0.05 mm min to 0.50 mm max. The component cannot rotate more than 10° within the determined cavity

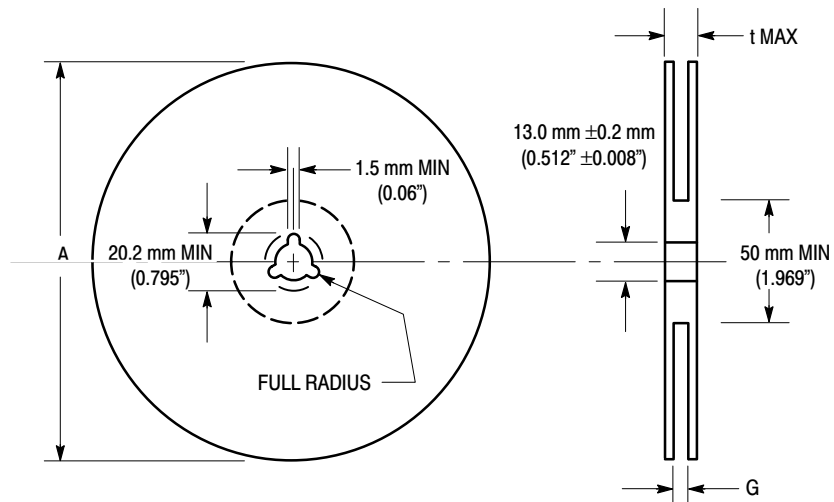


Figure 8. Reel Dimensions

REEL DIMENSIONS

Tape Size	A Max	G	t Max
24 mm	360 mm (14.173")	24.4 mm + 2.0 mm, -0.0 (0.961" + 0.078", -0.00)	30.4 mm (1.197")

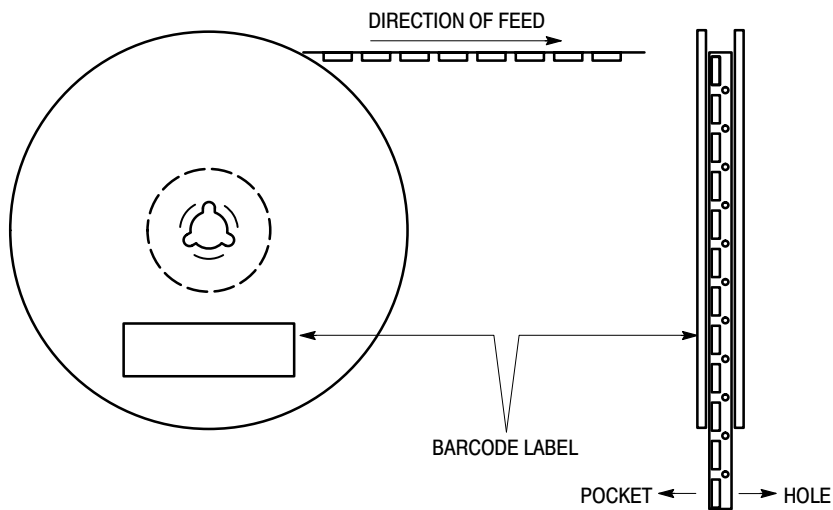


Figure 9. Reel Winding Direction

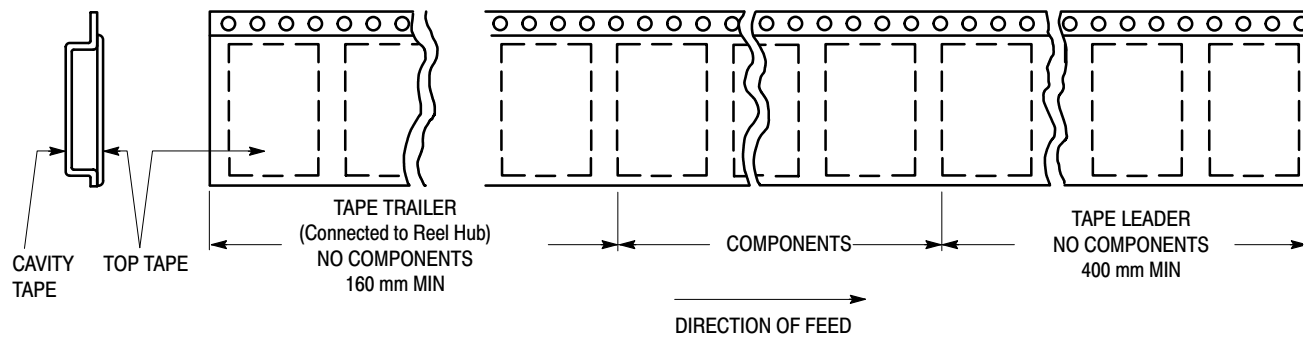


Figure 10. Tape Ends for Finished Goods

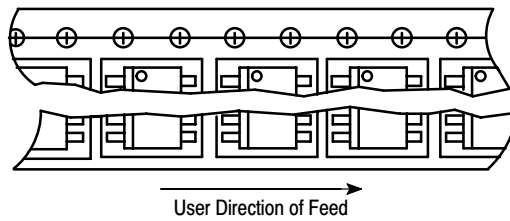
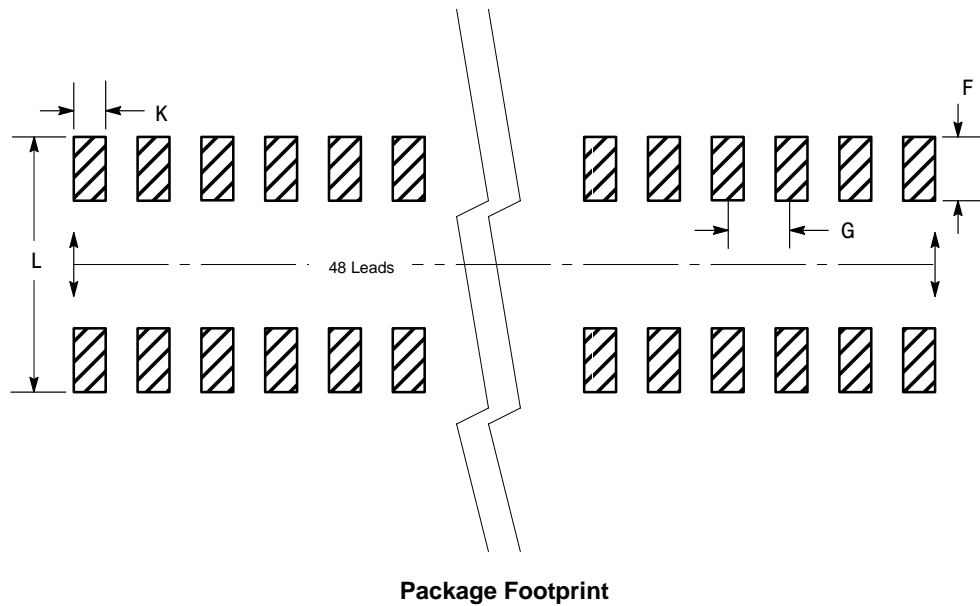
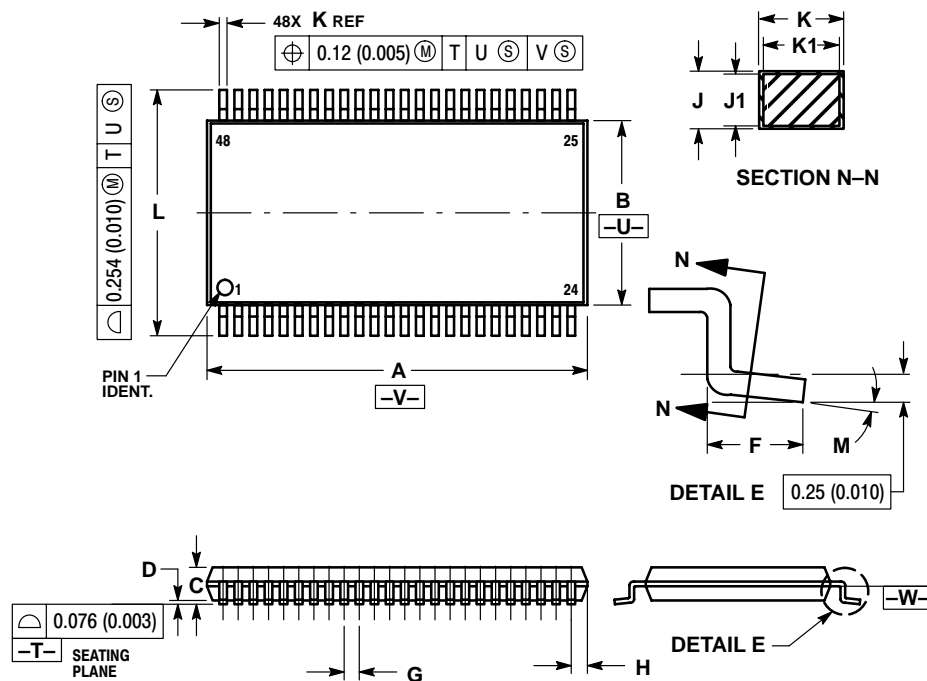


Figure 11. Reel Configuration



## PACKAGE DIMENSIONS


TSSOP  
DT SUFFIX  
CASE 1201-01  
ISSUE A



## NOTES:

1. DIMENSIONING AND TOLERANCING PER ANSI Y14.5M, 1982.
2. CONTROLLING DIMENSION: MILLIMETER.
3. DIMENSIONS A AND B DO NOT INCLUDE BURRS. MOLD FLASH OR GATE BURRS SHALL NOT EXCEED 0.15 (0.006) PER SIDE.
4. DIMENSION K DOES NOT INCLUDE DAMBAR PROTRUSION. ALLOWABLE DAMBAR PROTRUSION SHALL BE 0.08 (0.003) TOTAL IN EXCESS OF THE K DIMENSION AT MAXIMUM MATERIAL CONDITION.
5. TERMINAL NUMBERS ARE SHOWN FOR REFERENCE ONLY.
6. DIMENSIONS A AND B ARE TO BE DETERMINED AT DATUM PLANE -W-.

DIM	MILLIMETERS		INCHES	
	MIN	MAX	MIN	MAX
A	12.40	12.60	0.488	0.496
B	6.00	6.20	0.236	0.244
C	---	1.10	---	0.043
D	0.05	0.15	0.002	0.006
F	0.50	0.75	0.020	0.030
G	0.50 BSC		0.0197 BSC	
H	0.37	---	0.015	---
J	0.09	0.20	0.004	0.008
J1	0.09	0.16	0.004	0.006
K	0.17	0.27	0.007	0.011
K1	0.17	0.23	0.007	0.009
L	7.95	8.25	0.313	0.325
M	0 °	8 °	0 °	8 °

ON Semiconductor and  are trademarks of Semiconductor Components Industries, LLC (SCILLC). SCILLC reserves the right to make changes without further notice to any products herein. SCILLC makes no warranty, representation or guarantee regarding the suitability of its products for any particular purpose, nor does SCILLC assume any liability arising out of the application or use of any product or circuit, and specifically disclaims any and all liability, including without limitation special, consequential or incidental damages. "Typical" parameters which may be provided in SCILLC data sheets and/or specifications can and do vary in different applications and actual performance may vary over time. All operating parameters, including "Typicals" must be validated for each customer application by customer's technical experts. SCILLC does not convey any license under its patent rights nor the rights of others. SCILLC products are not designed, intended, or authorized for use as components in systems intended for surgical implant into the body, or other applications intended to support or sustain life, or for any other application in which the failure of the SCILLC product could create a situation where personal injury or death may occur. Should Buyer purchase or use SCILLC products for any such unintended or unauthorized application, Buyer shall indemnify and hold SCILLC and its officers, employees, subsidiaries, affiliates, and distributors harmless against all claims, costs, damages, and expenses, and reasonable attorney fees arising out of, directly or indirectly, any claim of personal injury or death associated with such unintended or unauthorized use, even if such claim alleges that SCILLC was negligent regarding the design or manufacture of the part. SCILLC is an Equal Opportunity/Affirmative Action Employer.

## PUBLICATION ORDERING INFORMATION

## NORTH AMERICA Literature Fulfillment:

Literature Distribution Center for ON Semiconductor  
P.O. Box 5163, Denver, Colorado 80217 USA  
Phone: 303-675-2175 or 800-344-3860 Toll Free USA/Canada  
Fax: 303-675-2176 or 800-344-3867 Toll Free USA/Canada  
Email: ONlit@hibbertco.com  
Fax Response Line: 303-675-2167 or 800-344-3810 Toll Free USA/Canada

N. American Technical Support: 800-282-9855 Toll Free USA/Canada

EUROPE: LDC for ON Semiconductor – European Support

German Phone: (+1) 303-308-7140 (Mon-Fri 2:30pm to 7:00pm CET)  
Email: ONlit-german@hibbertco.com  
French Phone: (+1) 303-308-7141 (Mon-Fri 2:00pm to 7:00pm CET)  
Email: ONlit-french@hibbertco.com  
English Phone: (+1) 303-308-7142 (Mon-Fri 12:00pm to 5:00pm GMT)  
Email: ONlit@hibbertco.com

EUROPEAN TOLL-FREE ACCESS\*: 00-800-4422-3781

\*Available from Germany, France, Italy, UK

## CENTRAL/SOUTH AMERICA:

Spanish Phone: 303-308-7143 (Mon-Fri 8:00am to 5:00pm MST)  
Email: ONlit-spanish@hibbertco.com

ASIA/PACIFIC: LDC for ON Semiconductor – Asia Support

Phone: 303-675-2121 (Tue-Fri 9:00am to 1:00pm, Hong Kong Time)  
Toll Free from Hong Kong & Singapore:  
001-800-4422-3781  
Email: ONlit-asia@hibbertco.com

JAPAN: ON Semiconductor, Japan Customer Focus Center

4-32-1 Nishi-Gotanda, Shinagawa-ku, Tokyo, Japan 141-0031  
Phone: 81-3-5740-2745  
Email: r14525@onsemi.com

ON Semiconductor Website: <http://onsemi.com>

For additional information, please contact your local Sales Representative.