

View from the printed pattern side of the circuit board.

C1			
Pin No.	Pin Name	Wire Color	Destination
1	TRM	BR	CPB-TRM (C2-4)
2	ICL	RE	CPB-ICL (C2-10)
3	FSW	OR	JK-FSW (C1-3)
4	VDD	BE	DC-VDD (C1-6)
5	Vss	GR	DC-Vss (C1-5)

C2			
Pin No.	Pin Name	Wire Color	Destination
1	—	—	—
2	N1	BR	MK-N1 (C2-1)
3	N7	VI	MK-N7 (C2-7)
4	N6	BE	MK-N6 (C2-6)
5	N5	GR	MK-N5 (C2-5)
6	N4	YE	MK-N4 (C2-4)
7	N3	OR	MK-N3 (C2-3)
8	N2	RE	MK-N2 (C2-2)

C3			
Pin No.	Pin Name	Wire Color	Destination
1	B52	GG	MK-B52 (C1-10)
2	B51	WH	MK-B51 (C1-9)
3	B42	GY	MK-B42 (C1-8)
4	B41	VI	MK-B41 (C1-7)
5	B32	BE	MK-B32 (C1-6)
6	B31	GR	MK-B31 (C1-5)
7	B22	YE	MK-B22 (C1-4)
8	B21	OR	MK-B21 (C1-3)
9	B12	RE	MK-B12 (C1-2)
10	B11	BR	MK-B11 (C1-1)

C4			
Pin No.	Pin Name	Wire Color	Destination
1	GND	BL	DC-GND (C1-7)
2	-15V	YE	DC -15V (C1-9)
3	ACC	WH	CPB-ACC (C2-5)
4	RHY	GY	CPB-RHY (C1-1)
5	M2	VI	CPB-M2 (C1-5)
6	M4	BE	CPB-M4 (C1-4)
7	M8	GR	CPB-M8 (C1-3)

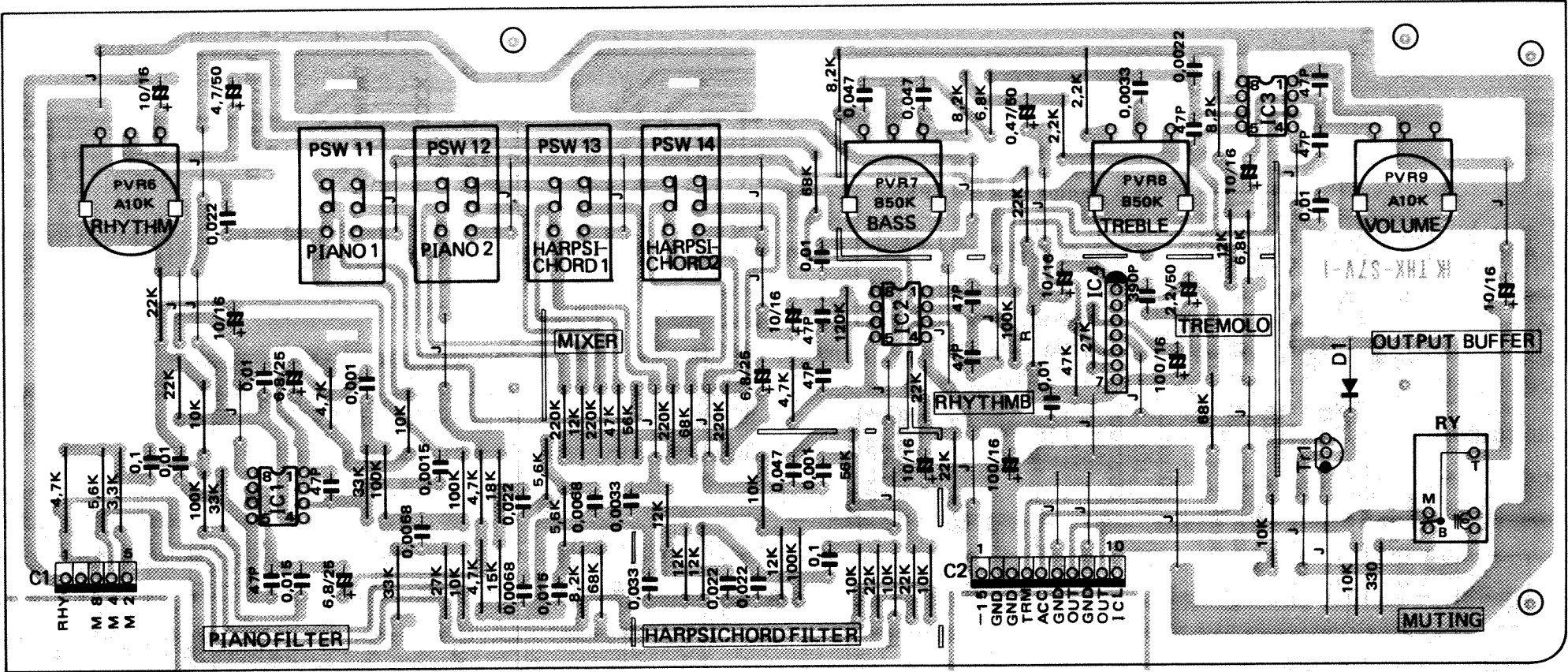
Notes)

1. Circuit Board : LC29452
2. Transistors
Tr1 : 2SC752TM
Tr2, 3, 7 ~ 10 : 2SC1815
Tr4 ~ 6 : 2SA1015
3. Integrated Circuits
IC1 : YM1011
IC2 : YM1101
IC3, 4 : YM1002
IC5 : μPD4069C
IC6 ~ 10 : NJM4558DV
4. Diodes
D1 ~ 17 : 1S1555

YM1002

Pin			Pin		
No.	Name	Description	No.	Name	Description
1	SY	Synchro data IN (← KAR)	16	φM	Master clock IN (470kHz)
2	SI	Serial data IN (← PSC II)	15	VDD	DC Supply (-9V)
3	PI	Parallel data IN 1 (← SW)	14	SO	Serial data OUT (⇒ KAR, DO)
4	P2	- do. - 2 (← SW)	13	PI0	Parallel data IN 10 (← SW)
5	P3	- do. - 3 (← SW)	12	P9	- do. - 9 (← SW)
6	P4	- do. - 4 (← SW)	11	P8	- do. - 8 (← SW)
7	P5	- do. - 5 (← SW)	10	P7	- do. - 7 (← SW)
8	VSS	Ground (0V)	9	P6	- do. - 6 (← SW)

CPB CIRCUIT BOARD



View from the printed pattern side of the circuit board.

C1			
Pin No.	Pin Name	Wire Color	Destination
1	RHY	GY	CPA-RHY (C4-4)
2	-	-	-
3	M8	GR	CPA-M8 (C4-7)
4	M4	BE	CPA-M4 (C4-6)
5	M2	VI	CPA-M2 (C4-5)

C2			
Pin No.	Pin Name	Wire Color	Destination
1	-15V	YE	DC -15V (C1-10)
2	GND	BL	DC-GND (C1-8)
3	-	-	-
4	TRM	BR	CPA-TRM (C1-1)
5	ACC	WH	CPA-ACC (C4-3)
6	GND	SOR S	-
7	OUT	SOR	JK-OUT (C1-4)
8	GND	SOR S	-
9	OUT	SOR	DC-MI (C1-4)
10	ICL	RE	CPA-ICL (C1-2)

- Notes)
- 1. Circuit Board : LC29452
 - 2. Transistor
Tr1 : 2SA1015
 - 3. Integrated Circuits
IC1 ~ 3 : NJM4558DV
IC4 : iG2600