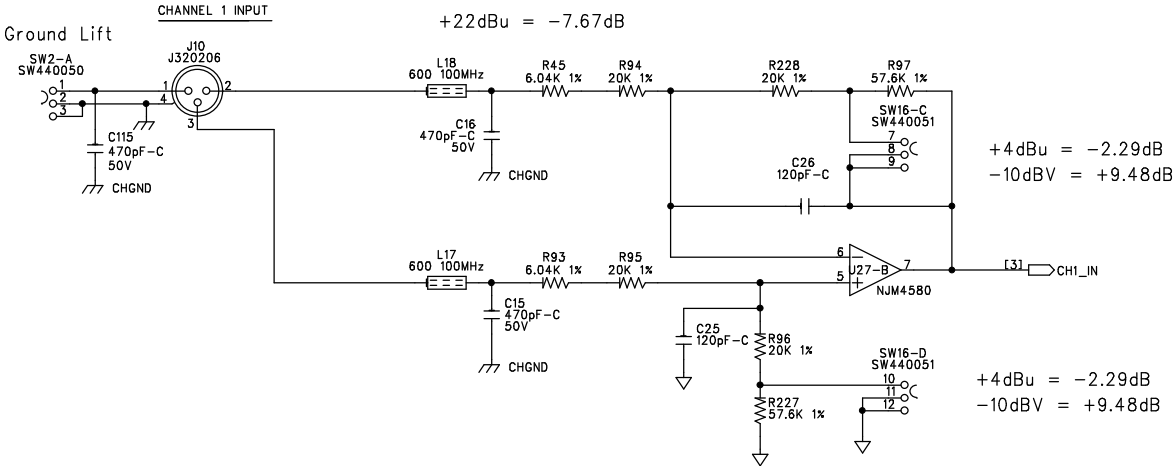


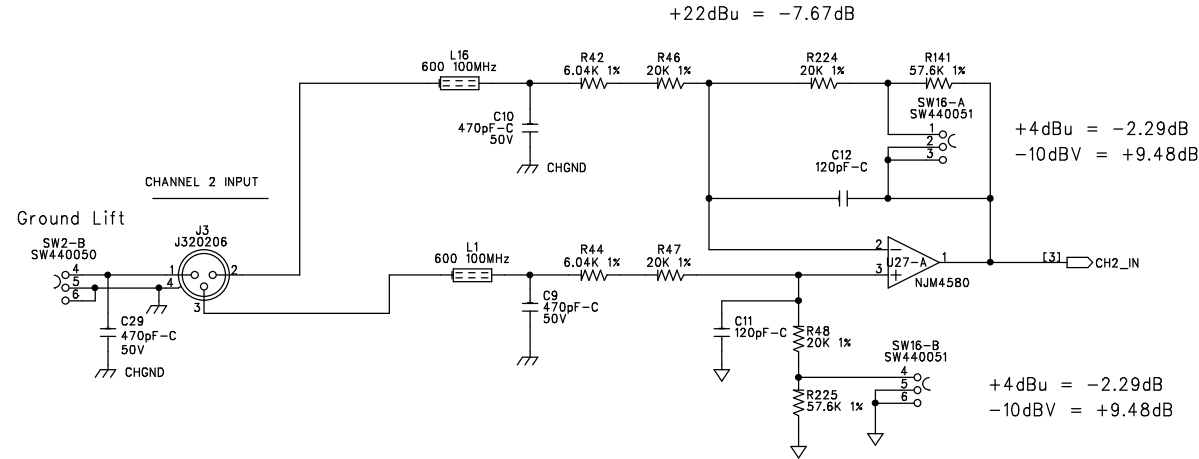
A3	CHANGE CAPACITORS C79, C80, C81 AND P1 TO 60-0201	2047	DWB	4-26-02
A2	Change C131, C126 from .1uF to 2.2uF. Install 100uF cap at P3. Add 20 Ohm resistor at R337.	2036	RBB	4-15-02
A1	Change R28, R29, R36 and R266 from 1K to 10K Remove 44 pin PLCC socket for microprocessor	2028	RBB	4-05-02
A0	RELEASE TO PRODUCTION		DWB	3-25-02
REV	DESCRIPTION	ECN #	INIT	DATE
REVISION HISTORY				
dbx PROFESSIONAL PRODUCTS 8760 South Sandy Parkway Sandy Utah 84070				
TITLE:  dbx DriveRack 1000 MAIN PCB				
DESIGNER: DAVID W. BYBEE		ENGINEER: R. BOATRIGHT		
SIZE: A	DRAWING NO: 05-1790			REVISION A3
DATE:	4-26-02	FILENAME:	051790A3.SCH	SHEET: 1 OF 15

SC15  
SC340125

SC14  
SC340125



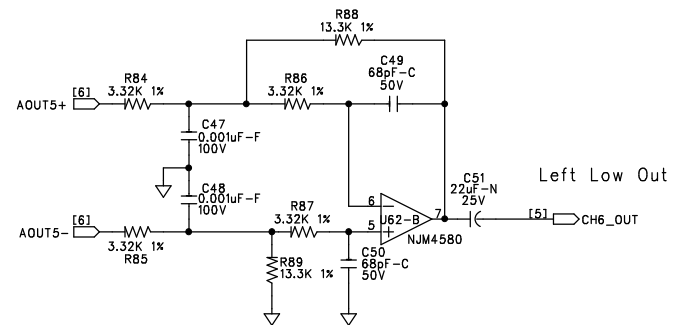
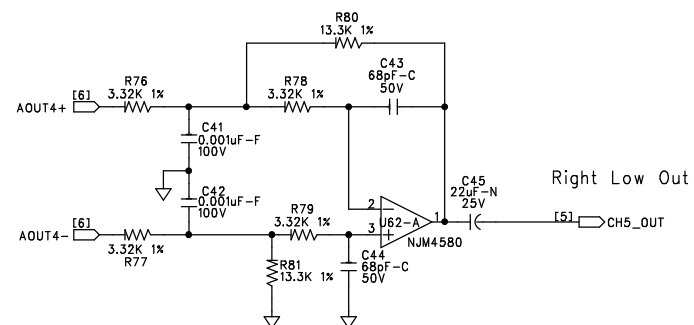
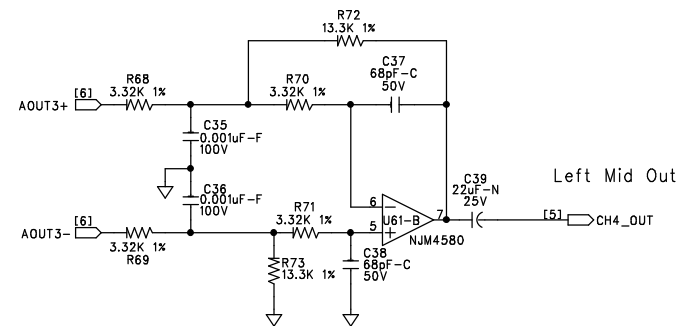
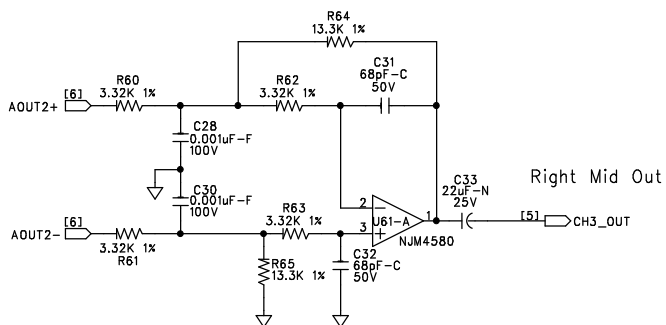
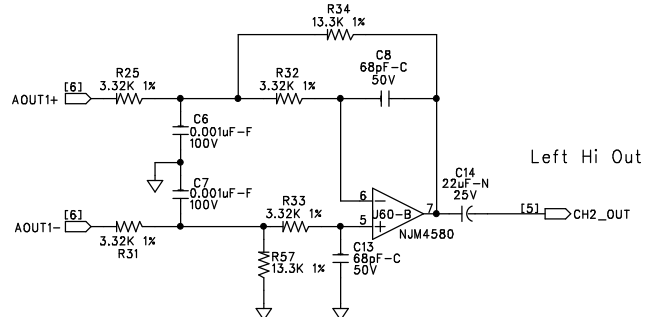
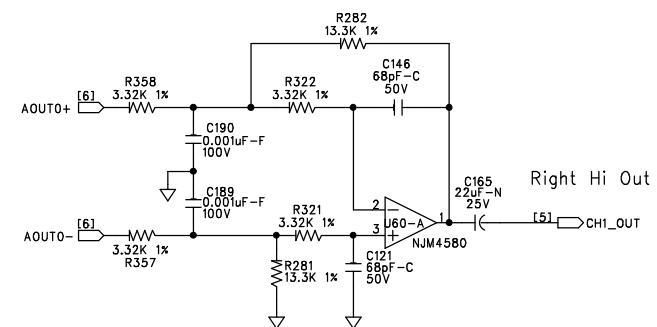
Left In

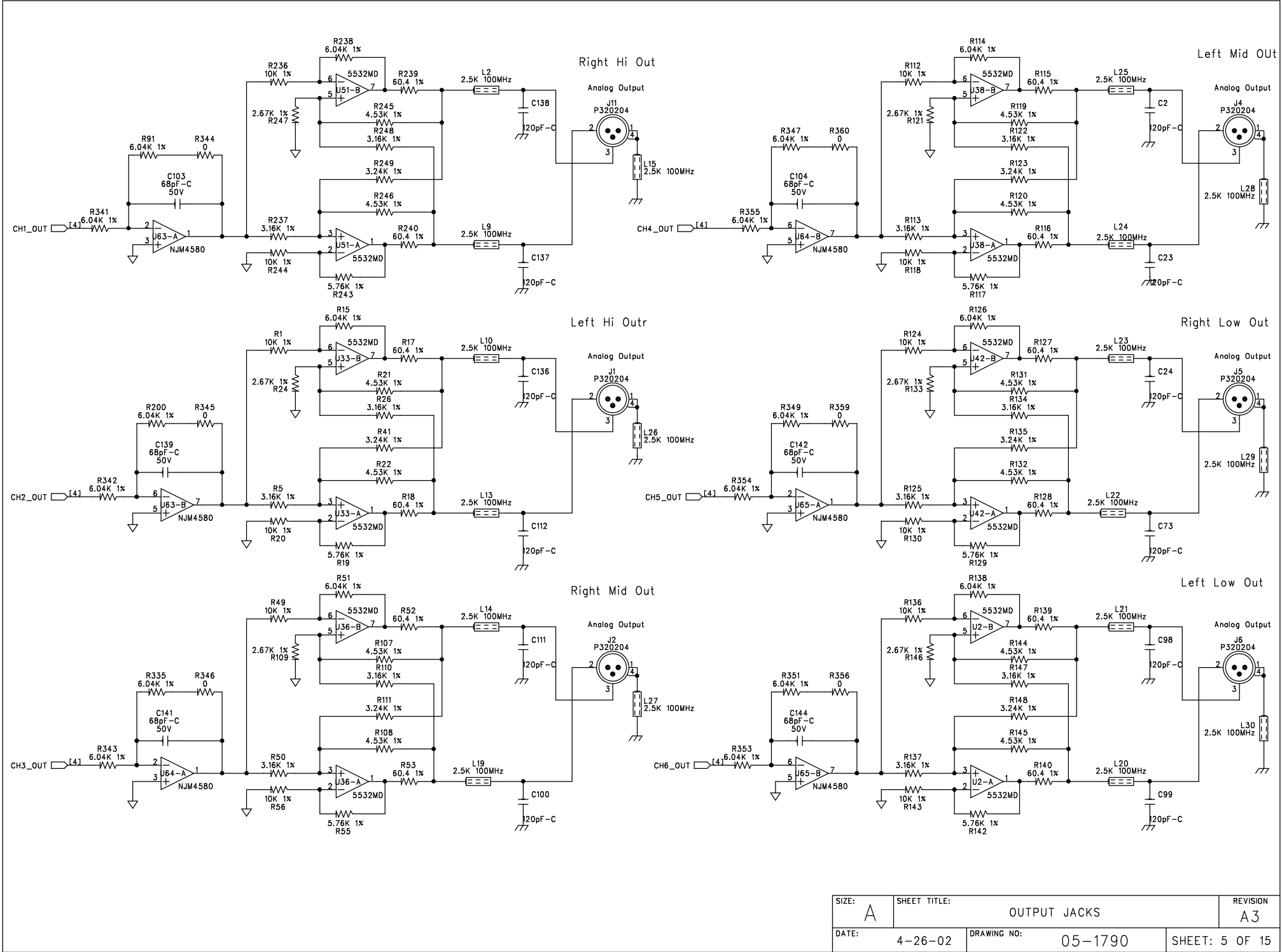


Right In

SIZE: A	SHEET TITLE: CHANNEL 1 & 2 INPUTS	REVISION A3
START DATE: 4-26-02	DRAWING NO: 05-1790	SHEET: 2 OF 15

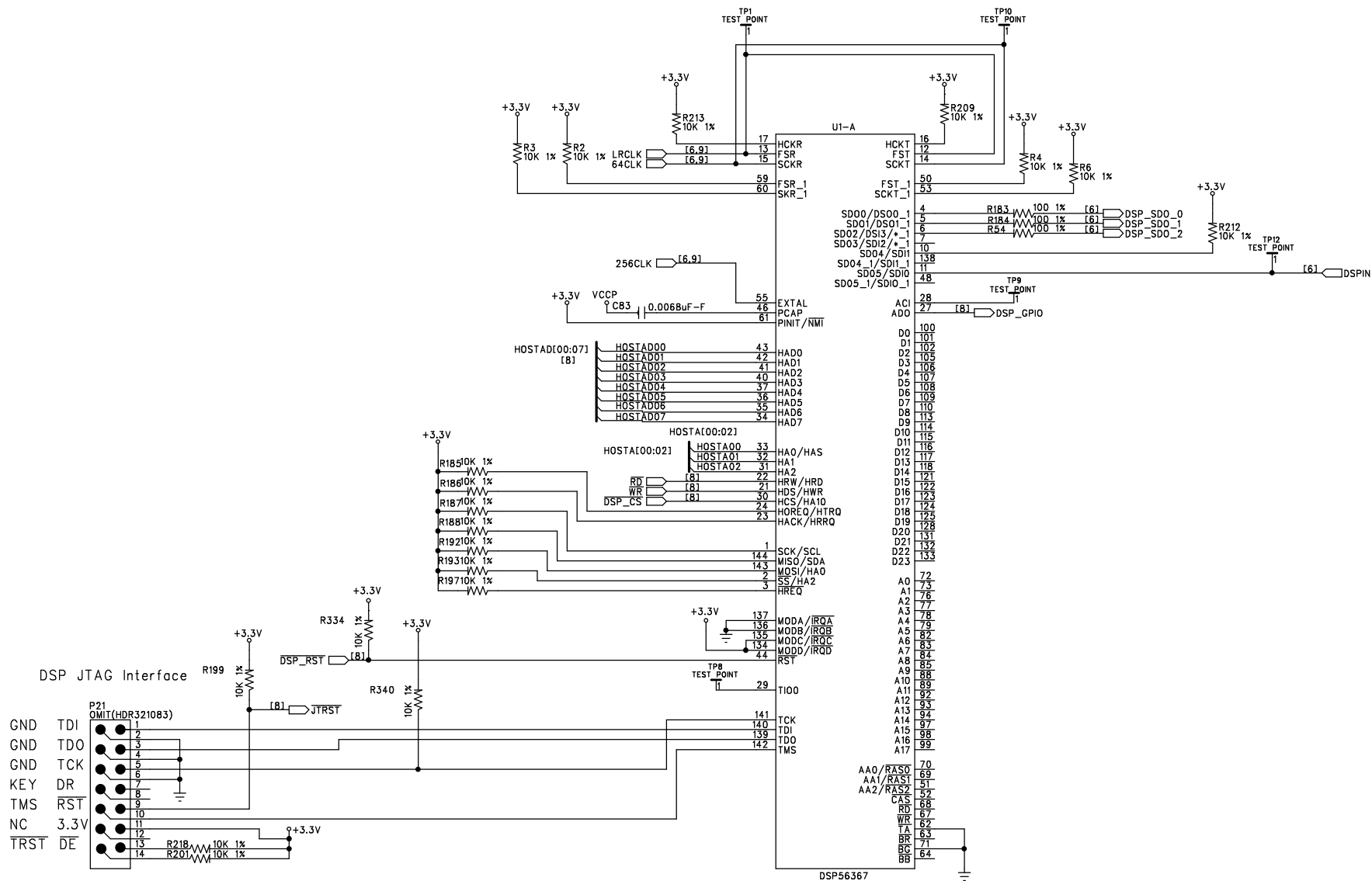


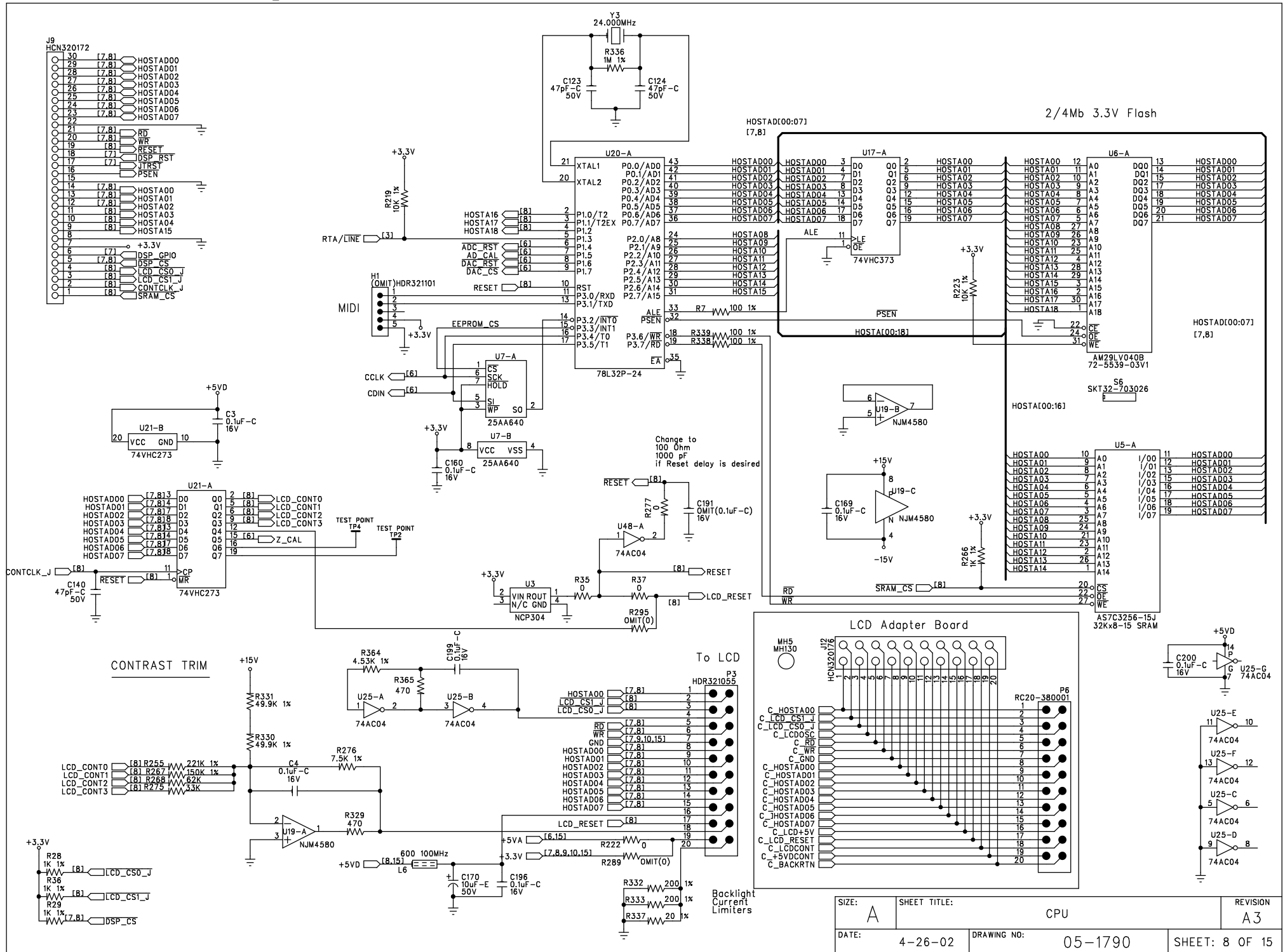




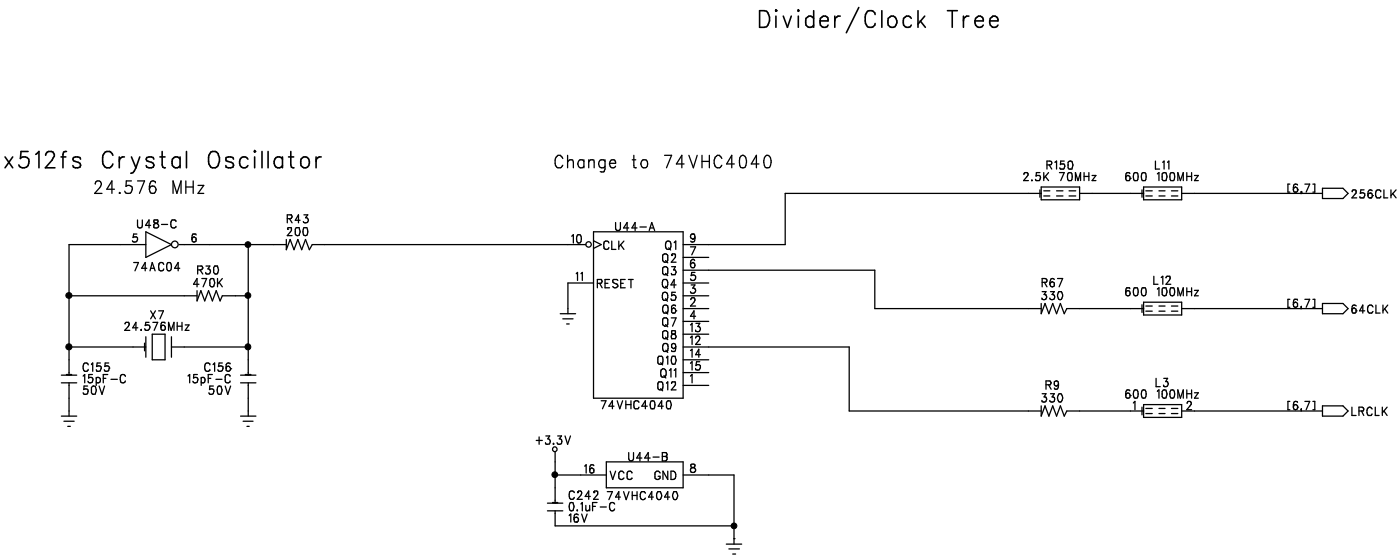
SIZE: A	SHEET TITLE: OUTPUT JACKS	REVISION: A3
DATE: 4-26-02	DRAWING NO: 05-1790	SHEET: 5 OF 15

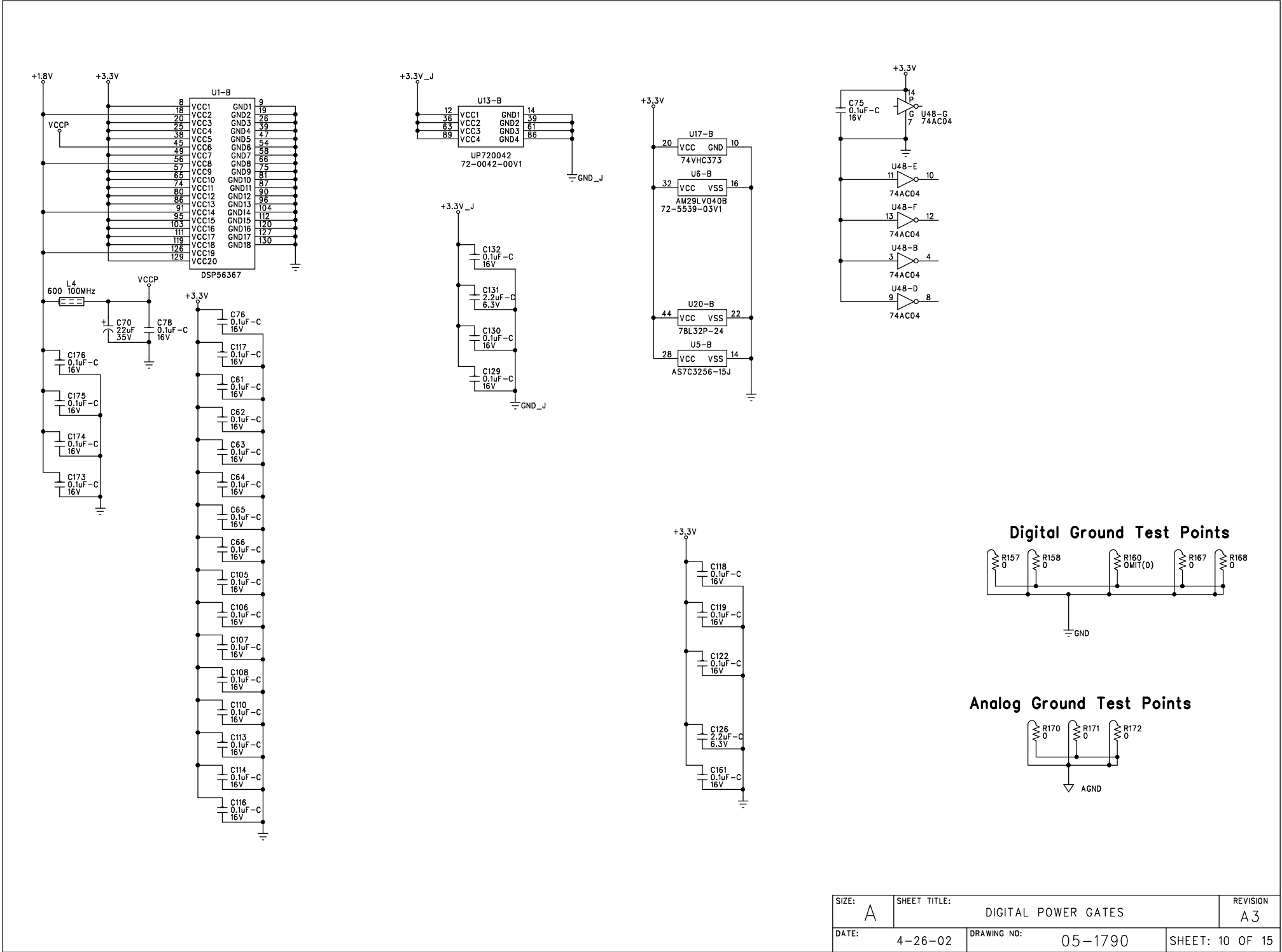


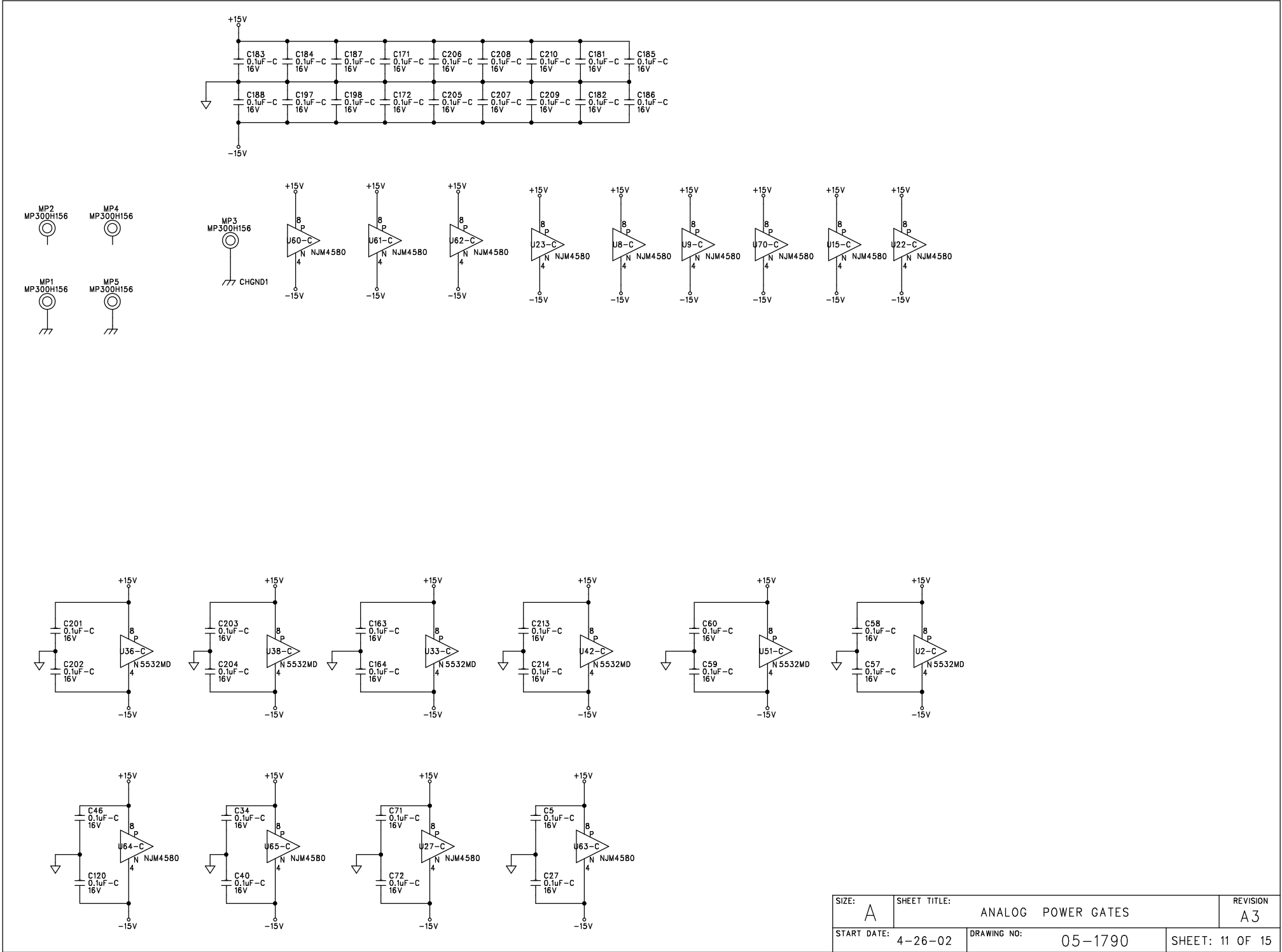


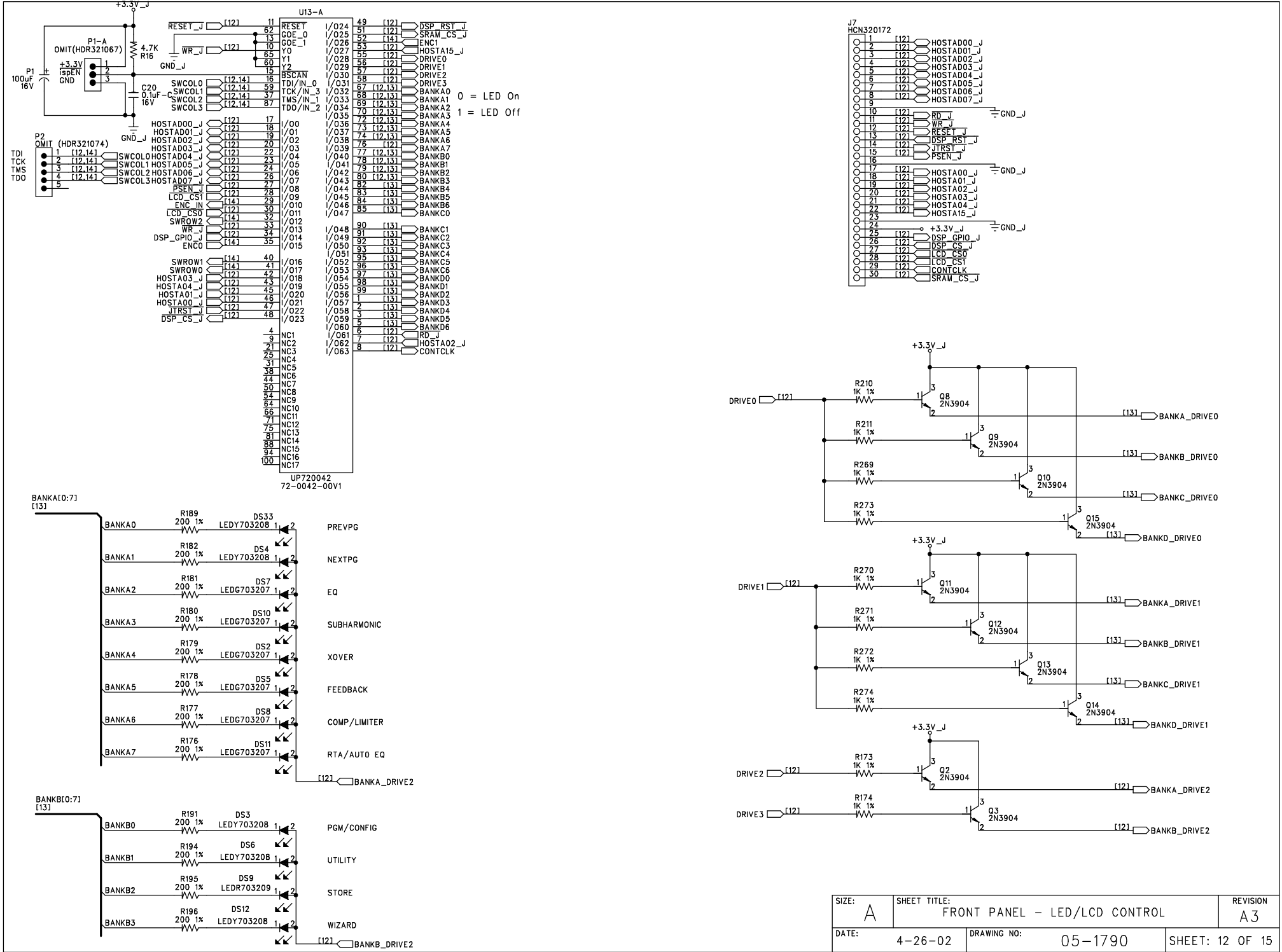


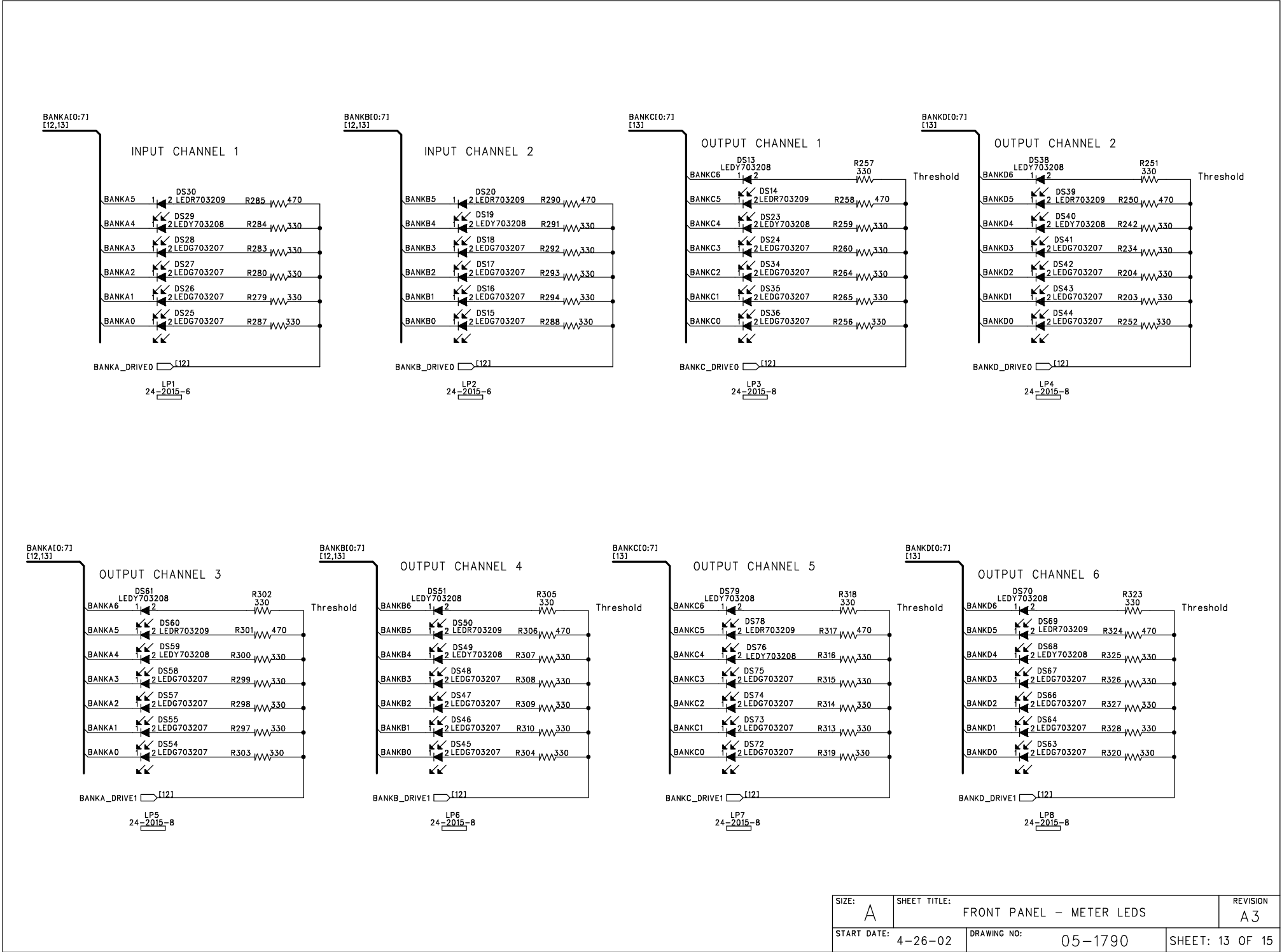


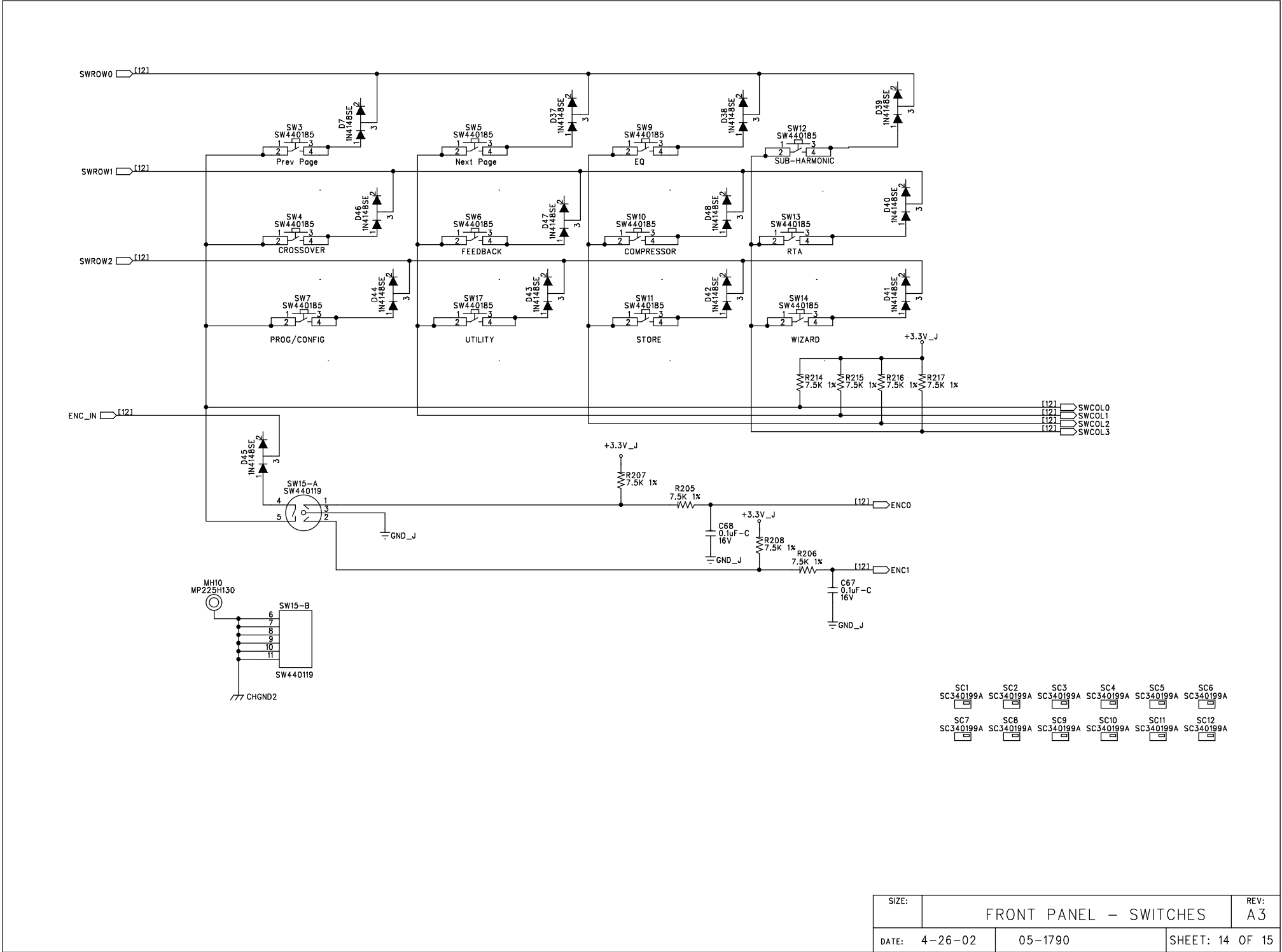














Bill Of Materials for 051790a3.sch on Fri Apr 26 12:47:36 2002

Qty	Reference	HMG#	Description	Audit	Schematic Part	PCB Decal
1	PCB1	80-1790	PCB 80-1790 dbx DriveRack 1000 MAIN PCB	PTxxxx	80XXXXXY	BARCODE
10	A6-9 A14-15 A17-18 A20 A22	NON-PART	NON-PART, PCB ONLY, BREAKOFF PART	PT1481	BRKOFF	BRKOFF
12	C6-7 C28 C30 C35-36 C41-42 C47-48 C189-190	56-0000	CAP 0.001uF FILM PTR 100V 5% AF TA	PT1629	C0.001UF100JR	RFCC200
1	C83	56-0005	CAP 0.0068uF FILM PTR 100V 5% RF TA	PT1307	C0.0068UF100JR	RFDC200
4	C69 C89 C157-158	62-1311	CAP 0.01uF CER 50V 20% Y5V 0603 TA	PT2665	C0.01UC50M0603	0603
2	C52 C97	56-0033	CAP 0.027uF FILM PTR 100V 5% RF TA	PT1282	C0.027UF100JR	RFEF200
93	C3-5 C18-20 C22 C27 C34 C40 C46 C57-68 C71-72 C75-76 C78 C90-91 C105-108 C110 C113-114 C116-120 C122 C125 C129-130 C132 C135 C160-164 C168-169 C171-176 C181-188 C192 C196-210 C212-214 C216 C240 C242-244	62-1310	CAP 0.1uF CER 16V 20% Y5V 0603 TA	PT2696	C0.1UC16M0603	0603
1	C191	OMIT	OMIT CAP 0.1uF CER 16V 20% Y5V 0603 TA (62-1310)	PT2711	C0.1UC16M0603O	0603
2	C87-88	56-0012	CAP 0.1uF FILM MTPT 50V 5% RF TA	PT1200	C0.1UF50JR	RFEC200
2	C215 C217	62-3209	CAP 0.22uF CER 50V 10% X7R 1206 TA	PT2271	C0.22UC50K1206	1206
4	C226-229	62-1308	CAP 1000pF CER 50V 20% Y5V 0603 TA	PT2651	C1000PC50M0603	0603
2	C92-93	60-1073	CAP 1000uF EL 35V 20% HT 13x25R 5LL BK	PT1971	C1000UE35MR1	REQ200P
4	C79-81 P1	60-0201	CAP 100uF EL 16V 20% GP 6x8R 5LS TA	PT1378	C100UE16MR	REG200P
18	C1 C21 C74 C77 C94-95 C127-128 C133-134 C170 C193-195 C211 C218-219 C241	60-1074	CAP 10uF EL 50V 20% HT 5x11R 5LS TA	PT1972	C10UE50MR1	REE200P
20	C2 C11-12 C23-26 C56 C73 C82 C84 C96 C98-100 C111-112 C136-138	62-1304	CAP 120pF CER 50V 5% NPO 0603 TA	PT2655	C120PC50J0603	0603
6	C155-156 C222-225	62-1300	CAP 15pF CER 50V 5% NPO 0603 TA	PT2659	C15PC50J0603	0603
2	C126 C131	62-0000	CAP 2.2uF CER 6.3V +80/-20% Y5V 0603 TA	PT2787	C2.2UC6.3Z0603	0603
1	C70	60-0010	CAP 22uF EL 35V 20% GP 5x11R 5LS TA	PT2110	C22UE35MR	REE200P
10	C14 C33 C39 C45 C51 C147 C149 C152 C154 C165	60-0402	CAP 22uF ELNP 25V 20% GP 6x11R 5LS TA	PT1084	C22UN25MR	REG200
1	C17	60-1072	CAP 3300UF ELEC 16V 20% 13x25 BULK 105c	PT1999	C3300UE16MR	REQ200P
8	C53 C109 C143 C145 C148 C150-151 C153	62-1306	CAP 330pF CER 50V 10% X7R 0603 TA	PT2653	C330PC50K0603	0603
8	C9-10 C15-16 C29 C85-86 C115	62-1307	CAP 470pF CER 50V 10% X7R 0603 TA	PT2652	C470PC50K0603	0603
3	C123-124 C140	62-1302	CAP 47pF CER 50V 5% NPO 0603 TA	PT2657	C47PC50J0603	0603
4	C54-55 C101-102	60-0054-01	CAP 47uF EL 16V 20% GP 5x11R 5LS TA	PT1108	C47UE16MR	REE200P
18	C8 C13 C31-32 C37-38 C43-44 C49-50 C103-104 C121 C139 C141-142 C144 C146	62-1303	CAP 68pF CER 50V 5% NPO 0603 TA	PT2656	C68PC50J0603	0603
13	D8 D16 D20 D23-28 D30-31 D33 D35	70-0000	DIO 1N4001 50V 1 AMP AMMO TA	PT1003	D1N4001-R	RDB200
25	D1-7 D9 D13-15 D21-22 D37-48	70-0113	DIO MMBD4148SE DUAL 75V 600mA SOT-23 TA	PT1326	D1N4148SE-S	SOT-23
5	A1-5	NON-PART	NON-PART, FIDUCIAL, TARGET FOR AUTO INSERTION	PT1271	FIDUCIAL	FIDUCIAL



051790a3.pps					
2	J7 J9	32-0172	HCN CONN 30 PIN .5 MM CNTS 1X30 FML RA	PT2724 HCN320172	HC320172
1	J12	32-0176	HCN CONN 20 PIN FEM VRT MNT SMT	PT2773 HCN320176	HC102V079050FS
1	P3	32-1055	HDR, 20 PIN, 0.1" SPC, 2 X 10, VERT, MALE	PT1340 HDR321055	HC102
2	P4-5	32-1080	HDR, 3 PIN, 0.1" SPC, 1 X 3, LCK, R/A, MALE	PT1073 HDR321080	HC3L
1	P1-A	OMIT	OMIT HDR 3 PIN 0.1" SPC 1 X 3 VERT MALE CUT FROM 14 PIN (32-1067)	PT2703 HDR321067-O	HC31
1	P2	OMIT	OMIT HDR 5 PIN 0.1" SPC 1 X 5 VERT MALE	PT2788 HDR321074-O	HC51M
1	P21	OMIT	OMIT HDR 14 PIN 0.1" SPC 2 X 7 VERT MALE (32-1083)	PT2127 HDR321083-O	HC72
1	H1	OMIT	OMIT, HDR, 5 PN, 0.079" SP, 1 X 5, 0.020" PS LK SD PO VT MA (32-1101)	PT1825 HDR321101-O	HC579LSPM
1	P7	OMIT	OMIT, HDR, 9 PIN, 0.1" SPC, PIN 10 MISSING, VERT, MALE, (32-1182)	PT1121 HDR321182-O	HDR321182
3	HS1-2 HS4	70-4215	HEATSINK, TO-220, VERT	PT1339 HS704215	HS704215
3	J3 J8 J10	32-0206	CON, JACK, XLR, R/A, PCA A SERIES	PT1219 J320206	XLRF-1
1	DS1	70-2114	LED, GRN, T1, RLC100, AMMO	PT1059 LEDG702114	RLC100
38	DS2 DS5 DS7-8	70-3207	LED GREEN D1206 T&R	PT1902 LEDG703207	D1206
	DS10-11 DS15-18				
	DS24-28 DS34-36				
	DS41-48 DS54-55				
	DS57-58 DS63-64				
	DS66-67 DS72-75				
10	DS9 DS14 DS20	70-3209	LED RED D1206 T&R	PT1901 LEDR703209	D1206
	DS30-31 DS39 DS50				
	DS60 DS69 DS78				
19	DS3-4 DS6 DS12-13	70-3208	LED YELLOW D1206 T&R	PT1900 LEDY703208	D1206
	DS19 DS23 DS29 DS33				
	DS38 DS40 DS49 DS51				
	DS59 DS61 DS68 DS70				
	DS76 DS79				
9	L1 L3-4 L6 L11-12	26-0000	IND FBD 600 OHM @ 100Hz 200mA 0603 TA	PT2728 LFB260000	0603
	L16-18				
18	L2 L9-10 L13-15	26-0001	IND FBD 2.5K OHM @ 100Hz, 50mA 0603 TA	PT2729 LFB260001	0603
	L19-30				
3	L5 L7 R150	26-0217	IND FBD 2.5K OHM @ 70MHz 0805 TA	PT1261 LFB260217	0805
2	LP1-2	NON-PART	NON-PART 6 POS NOT INSTALLED UNTIL MECHANICAL ASSY(LIGHT PIPE)	PT1967 LP242015-6	LP242015-6
6	LP3-8	NON-PART	NON-PART 8 POS NOT INSTALLED UNTIL MECHANICAL ASSY(LIGHT PIPE)	PT1968 LP242015-8	LP242015-8
1	GP1	NON-PART	NON-PART MECCA GND/PWR TIE POINT 4 POS	PT2482 MECCA4	MECCA4
6	MH3-6 MH8 MH12	NON-PART	NON-PART, MOUNTING HOLE, 0.130" NON-PLATED, #4	PT1242 MH130	MH130
2	MH1-2	NON-PART	NON-PART, TOOLING PIN HOLE, 156MIL HOLE	PT1416 MH156-TOOL	MH156-TOOL
1	MH10	NON-PART	NON-PART MECHANICAL PLATED HOLE 225 PAD 130 HOLE #4	PT1998 MP225H130	MP225H130
5	MP1-5	NON-PART	NON-PART, MECHANICAL PLATED HOLE, 300 PAD, 156 HOLE, #6	PT1045 MP300H156	MP300H156
6	J1-2 J4-6 J11	32-0204	CON, PLUG, XLR, R/A, PCA A SERIES	PT1218 P320204	XLRM-1
1	Q1	70-1035	XSTR, 2N44402, PNP, SIGNAL, TO-92, AMMO	PT1527 Q2N4402	TO92(EBC)-V
10	Q2-3 Q8-15	70-1058	XSTR, 2N3904, NPN, SOT-23, T&R	PT1203 Q2N3904-S	SOT-23
12	R11 R13 R35 R37	50-1300	RES 0 5% 1/16W SM 0603 TA	PT2508 R0-B5-0603	0603
	R222 R277 R344-346				
	R356 R359-360				
7	R8 R10 R12 R58-59	OMIT	OMIT RES 0 5% 1/16W SM 0603 TA (50-1300)	PT2509 R0-B5-0603O	0603
	R289 R295				
7	R157-158 R167-168	50-0317	RES 0 5% 1/4W CF RR TA	PT1008 R0-E5-R	RRA200
	R170-172				
1	R160	OMIT	OMIT RES 0 5% 1/4W CF RR TA (50-0317)	PT1596 R0-E5-RO	RRA200
2	R163-164	52-1340	RES 10.7K 1% 1/16W SM 0603 TA	PT2592 R10.7KB1-0603	0603
8	R7 R39 R54 R183-184	52-1304	RES 100 1% 1/16W SM 0603 TA	PT2512 R100-B1-0603	0603
	R312 R338-339				
4	R103-104 R253-254	52-1360	RES 100K 1% 1/16W SM 0603 TA	PT2613 R100KB1-0603	0603
38	R1-4 R6 R14 R20 R23	52-1338	RES 10K 1% 1/16W SM 0603 TA	PT2584 R10KB1-0603	0603
	R49 R56 R112 R118				
	R124 R130 R136 R143				
	R159 R185-188				
	R192-193 R197 R199				
	R201 R209 R212-213				
	R218-219 R223 R236				
	R244 R334 R340				
	R383-384				

12	R34 R57 R64-65 R72-73 R80-81 R88-89 R281-282	52-1342	RES 13.3K 1% 1/16W SM 0603 TA	PT2594 R13.3KB1-0603	0603
1	R267	52-1362	RES 150K 1% 1/16W SM 0603 TA	PT2615 R150KB1-0603	0603
1	R153	52-1344	RES 15K 1% 1/16W SM 0603 TA	PT2596 R15KB1-0603	0603
4	R92 R149 R233 R235	52-1305	RES 169 1% 1/16W SM 0603 TA	PT2513 R169-B1-0603	0603
15	R28-29 R36 R156 R173-174 R210-211 R266 R269-274	52-1313	RES 1K 1% 1/16W SM 0603 TA	PT2550 R1KB1-0603	0603
1	R336	52-1372	RES 1M 1% 1/16W SM 0603 TA	PT2625 R1MB1-0603	0603
4	R74 R90 R226 R232	52-1317	RES 2.21K 1% 1/16W SM 0603 TA	PT2555 R2.21KB1-0603	0603
10	R24 R66 R83 R109 R121 R133 R146 R190 R231 R247	52-1319	RES 2.67K 1% 1/16W SM 0603 TA	PT2557 R2.67KB1-0603	0603
2	R175 R337	52-1300	RES 20 1% 1/16W SM 0603 TA	PT2507 R20-B1-0603	0603
15	R38 R176-182 R189 R191 R194-196 R332-333	52-1306	RES 200 1% 1/16W SM 0603 TA	PT2514 R200-B1-0603	0603
1	R43	50-1308	RES 200 5% 1/16W SM 0603 TA	PT2526 R200-B5-0603	0603
8	R46-48 R94-96 R224 R228	52-1346	RES 20K 1% 1/16W SM 0603 TA	PT2598 R20KB1-0603	0603
1	R255	52-1364	RES 221K 1% 1/16W SM 0603 TA	PT2617 R221KB1-0603	0603
12	R75 R82 R98-100 R154-155 R221 R229-230 R241 R262	52-1316	RES 2K 1% 1/16W SM 0603 TA	PT2553 R2KB1-0603	0603
12	R5 R26 R50 R110 R113 R122 R125 R134 R137 R147 R237 R248	52-1322	RES 3.16K 1% 1/16W SM 0603 TA	PT2560 R3.16KB1-0603	0603
6	R41 R111 R123 R135 R148 R249	52-1323	RES 3.24K 1% 1/16W SM 0603 TA	PT2561 R3.24KB1-0603	0603
26	R25 R31-33 R60-63 R68-71 R76-79 R84-87 R105 R165 R321-322 R357-358	52-1324	RES 3.32K 1% 1/16W SM 0603 TA	PT2562 R3.32KB1-0603	0603
48	R9 R67 R203-204 R234 R242 R251-252 R256-257 R259-260 R264-265 R279-280 R283-284 R287-288 R291-294 R297-300 R302-305 R307-310 R313-316 R318-320 R323 R325-328	50-1309	RES 330 5% 1/16W SM 0603 TA	PT2528 R330-B5-0603	0603
2	R161-162	52-1307	RES 332 1% 1/16W SM 0603 TA	PT2543 R332-B1-0603	0603
6	R101-102 R152 R261 R263 R275	50-1325	RES 33K 5% 1/16W SM 0603 TA	PT2589 R33KB5-0603	0603
1	R169	52-1301	RES 39.2 1% 1/16W SM 0603 TA	PT2515 R39.2-B1-0603	0603
1	R382	50-1326	RES 39K 5% 1/16W SM 0603 TA	PT2629 R39KB5-0603	0603
13	R21-22 R107-108 R119-120 R131-132 R144-145 R245-246 R364	52-1327	RES 4.53K 1% 1/16W SM 0603 TA	PT2565 R4.53KB1-0603	0603
1	R16	50-1317	RES 4.7K 5% 1/16W SM 0603 TA	PT2541 R4.7KB5-0603	0603
11	R151 R250 R258 R285 R290 R301 R306 R317 R324 R329 R365	50-1310	RES 470 5% 1/16W SM 0603 TA	PT2529 R470-B5-0603	0603
1	R30	50-1335	RES 470K 5% 1/16W SM 0603 TA	PT2643 R470KB5-0603	0603
2	R330-331	52-1356	RES 49.9K 1% 1/16W SM 0603 TA	PT2609 R49.9KB1-0603	0603
6	R198 R202 R278 R286 R296 R311	52-1308	RES 499 1% 1/16W SM 0603 TA	PT2545 R499-B1-0603	0603
6	R19 R55 R117 R129 R142 R243	52-1331	RES 5.76K 1% 1/16W SM 0603 TA	PT2576 R5.76KB1-0603	0603
4	R97 R141 R225 R227	52-1357	RES 57.6K 1% 1/16W SM 0603 TA	PT2610 R57.6KB1-0603	0603

22	R15 R42 R44-45 R51 R91 R93 R114 R126 R138 R200 R238 R335 R341-343 R347 R349 R351 R353-355	52-1332	RES 6.04K 1% 1/16W SM 0603 TA	PT2577	R6.04KB1-0603	0603
12	R17-18 R52-53 R115-116 R127-128 R139-140 R239-240	52-1303	RES 60.4 1% 1/16W SM 0603 TA	PT2511	R60.4-B1-0603	0603
1	R268	50-1328	RES 62K 5% 1/16W SM 0603 TA	PT2632	R62KB5-0603	0603
1	R220	50-1311	RES 680 5% 1/16W SM 0603 TA	PT2531	R680-B5-0603	0603
9	R205-208 R214-217 R276	52-1335	RES 7.5K 1% 1/16W SM 0603 TA	PT2581	R7.5KB1-0603	0603
2	R106 R166	52-1336	RES 8.06K 1% 1/16W SM 0603 TA	PT2582	R8.06KB1-0603	0603
1	P6	38-0001	RBN CBL 20 COND. 0.1", 4.25"	PT2772	RC20-380001	RC380001
2	SC14-15	34-0125	SWITCH CAP, BLACK, ROUND	PT1354	SC340125	SC340125-FPE
1	SC13	34-0198-C	SWITCH CAP LIGHT PIPE SNGL LED HORZ	PT2504	SC340198C	SC340198C
12	SC1-12	34-0199-A	SWITCH CAP dbx LIGHTED	PT2024	SC340199A	PCBNULL
1	S6	70-3026	SOCKET, PLCC 32, PLCC/R-32SKT	PT1419	SKT32-703026	PLCC/R-32SKT
1	SW2	44-0050	SWITCH DPDT MINI IN-OUT 6 PIN E-SWITCH	PT1256	SW440050	SW440050
2	SW1 SW16	44-0051	SWITCH, 4PDT, MINI IN-OUT, 12 PIN, E-SWITCH	PT1257	SW440051	SW440051
1	SW15	44-0119	ENCODER 20mm D SHAFT 30 POS W/SWITCH VERT MOUNT	PT1890	SW440119	SW440119
12	SW3-7 SW9-14 SW17	44-0185	SWITCH, SPST, LITE TOUCH, MINI, W/ PROJECTED PLUNGER SMT	PT1962	SW440185	SW4PTACT-3
7	TP1-2 TP4 TP8-10 TP12	NON-PART	NON-PART, TEST POINT, ENGINEERING PROBE POINT	PT1653	TESTPOINT	TESTPOINTSM
2	U4 U28	70-4014	V-REG, 7805, +5V, 1.5 AMP, TO-220	PT1591	U7805	TO220(IGO)-V
1	U10	70-4123	V-REG, 7815, +15V, 1 AMP, TO-220	PT1592	U7815	TO220(IGO)-V
1	U12	70-4124	V-REG, 7915, -15V, 1 AMP, TO-220	PT1594	U7915	TO220(GIO)-V
1	U7	72-0046	IC 25AA640 64K SERIAL EEPROM TA	PT2774	U25AA260	SO8
1	U5	72-6318	IC 32K x 8 SRAM 15ns SOJ28	PT2294	U32K8S15-J	SOJ28-300
6	U2 U33 U36 U38 U42 U51	72-1439	IC, 5532MD, DUAL BIPOLAR OPAMP, SO8-200	PT1306	U5532MD-S	SO8-200
2	U25 U48	72-5426	IC, 74AC04, HEX INVERTER, SO14, T&R	PT1325	U74AC04-S	SO14
1	U21	72-5437	IC 74VHC273 FLIP-FLOP OCTAL-D SO20W T&R	PT1909	U74VHC273-S	SO20W
1	U17	72-0045	IC 74VHC373 OCTAL LATCH SO20W	PT2771	U74VHC373-S	SO20W
1	U44	72-0044	IC 74VHC4040 12 BIT RIPPLE COUNTER SO16	PT2759	U74VHC4040-S	SO16
1	U20	72-6316	IC 78L32P-24 8 BIT MICROCONTROLLER 3.3V	PT2316	U78L32P-24	PLCC-44
1	U11	72-1485	IC AK4356 192kHz 24 BIT 6 CHANNEL DAC	PT2717	UAK4356-Q	QFP44-10X10
1	U26	72-1266	IC, AK5383, 96 kHz, DUAL 24BIT ADC, SO28W	PT1557	UAK5383-S	SO28W
1	U1	72-6305	IC DSP56367 DSP 150MHZ QFP144-20X20	PT2452	UDSP56367-Q	QFP144-20X20
1	U24	70-4021	V-REG, LD1117V33, +3.3V, 0.8 AMP, TO-220, BULK	PT1795	ULD1117V33	TO220(GOI)-V
1	U16	70-4007	V-REG, LM317T, ADJ REG, 1.5 AMP, TO-220	PT1785	ULM317T	TO220(AOI)-V
1	U3	72-6308	IC NCP304 VOLTAGE DETECTOR SC-82AB	PT2393	UNCP304	SC-82AB
14	U8-9 U15 U19 U22-23 U27 U60-65 U70	72-1480	IC NJM4580 DUAL OP-AMP SO8	PT1374	UNJM4580-S	SO8
1	U13	72-0042-00V1	IC CPLD ispLSI2064VE dbx Driverack PA V1	PT2785	UP720042	QFP100-14X14
1	U6	72-5539-03V1	IC AM29LV040B 512K x 8 FLASH MEMORY dbx Driverack PA V1	PT2292	UP725539	PLCC/R-32
1	Y3	76-0202	XTAL 24.000MHz METAL CAN SURFACE MOUNT T&R	PT1928	Y24.000M760202	XTAL2-V
1	X7	76-0006	XTAL 24.576MHz SMT CX16F/CS49G PKG	PT2713	Y24.576M760006	YCX16F/CX49G