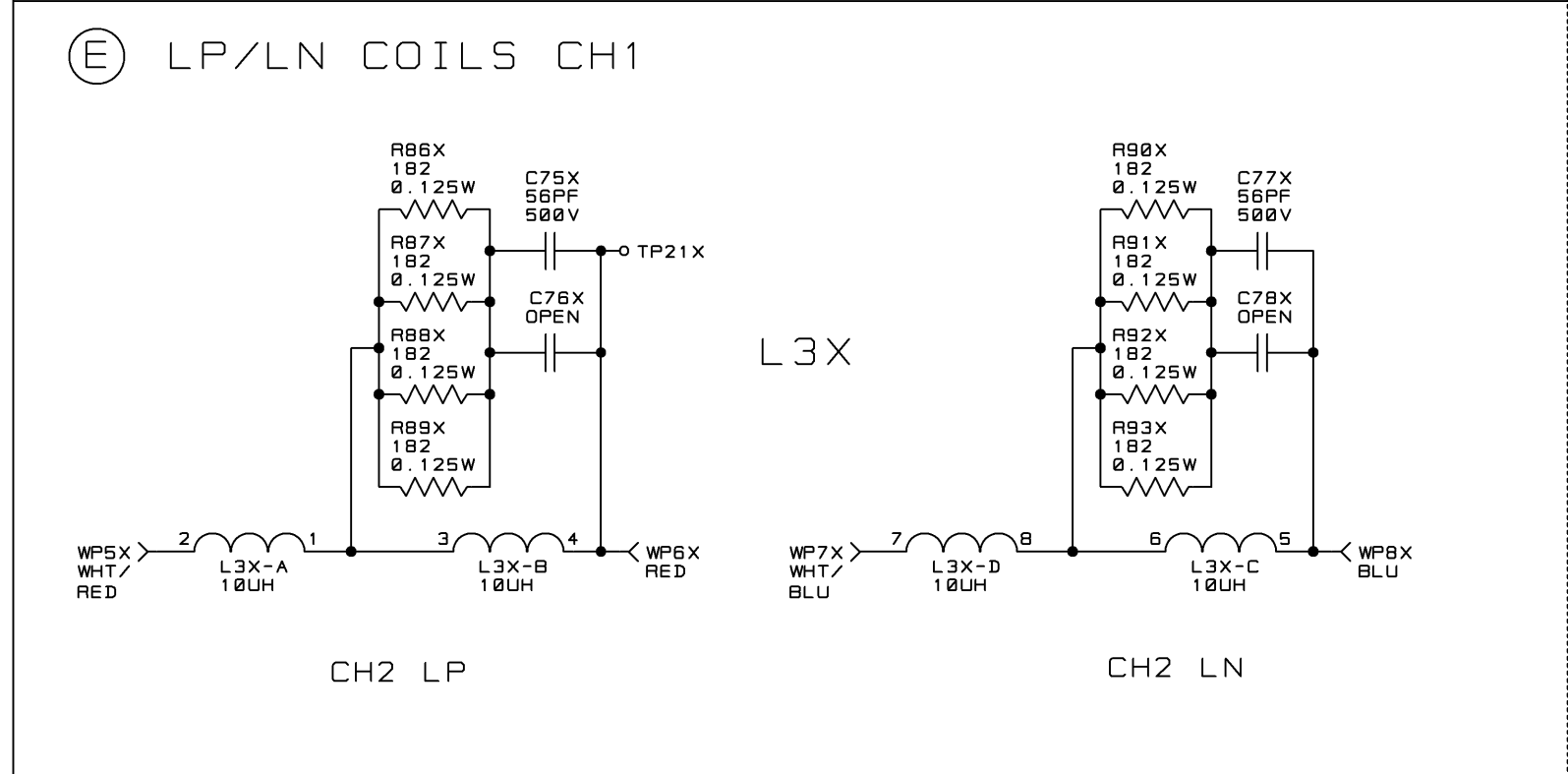
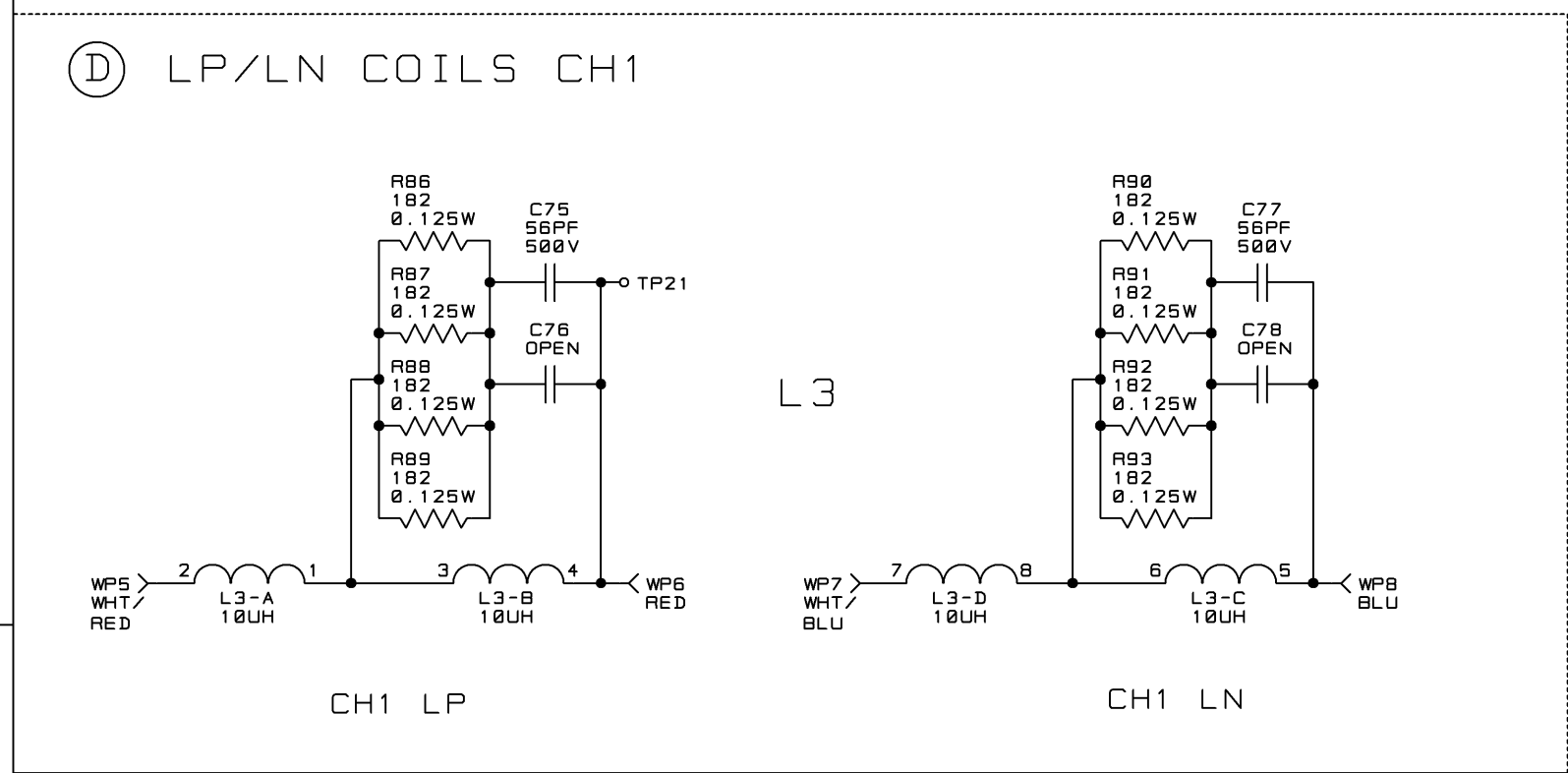
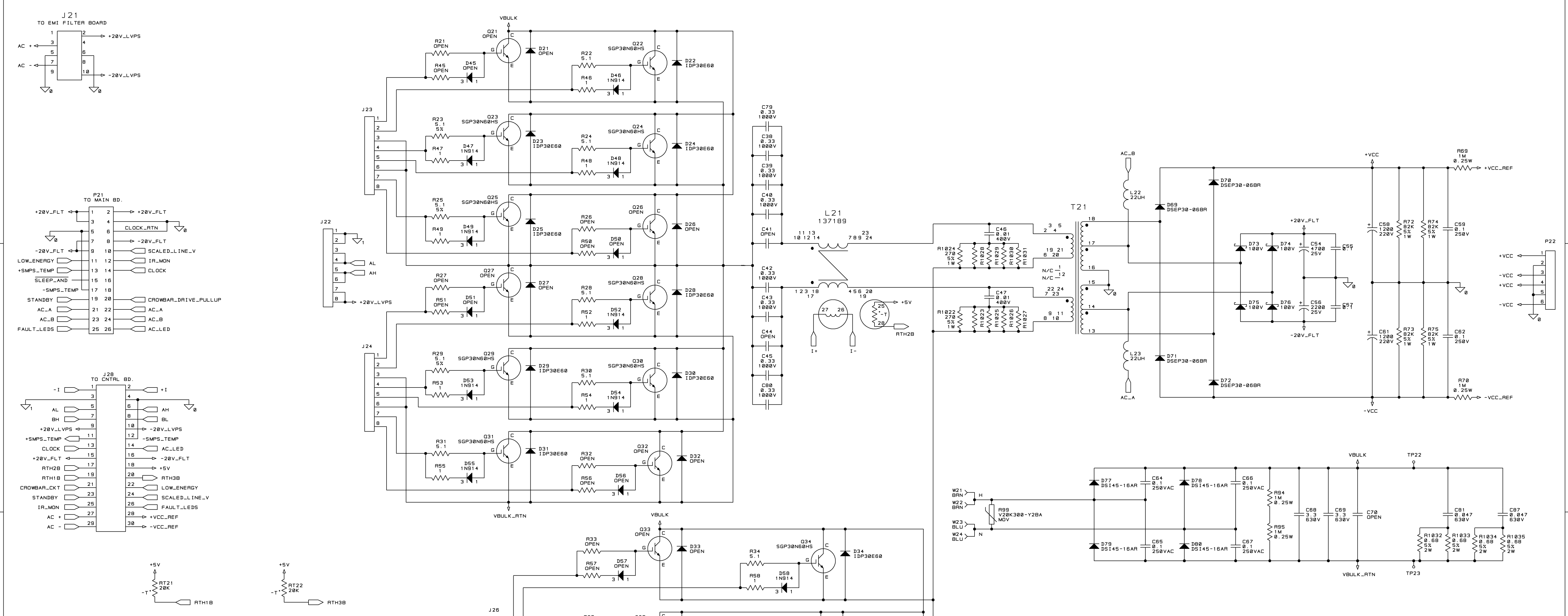


- NOTES:
1. ALL RESISTORS ARE IN OHMS, 1/10W, 1%.
UNLESS OTHERWISE SPECIFIED.
 2. ALL CAPACITORS ARE IN MICROFARADS.
UNLESS OTHERWISE SPECIFIED.
 3. SEE 137101-5_C.XLS FOR PWA DATA AND
REVISION HISTORY.

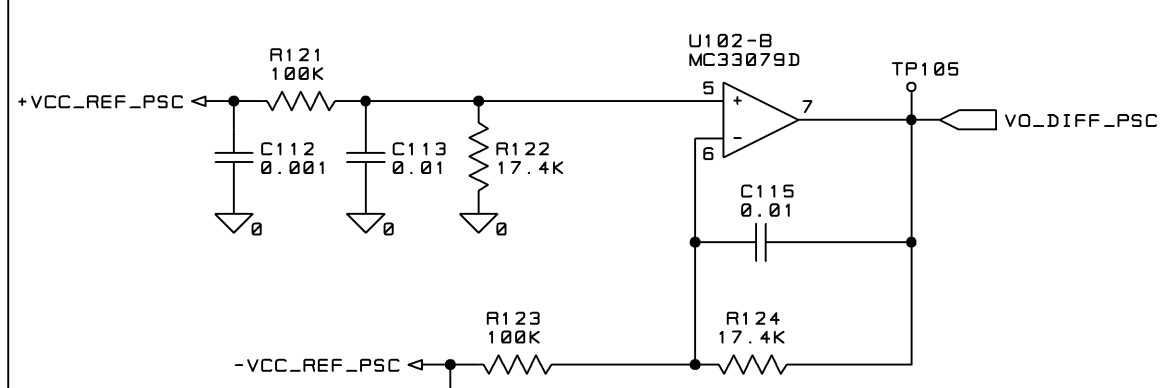
REFERENCE DESIGNATOR RANGE IS 1-21
EXCEPT FOR CAPACITORS WHICH ENDS AT C33

EMI FILTER / LVPS

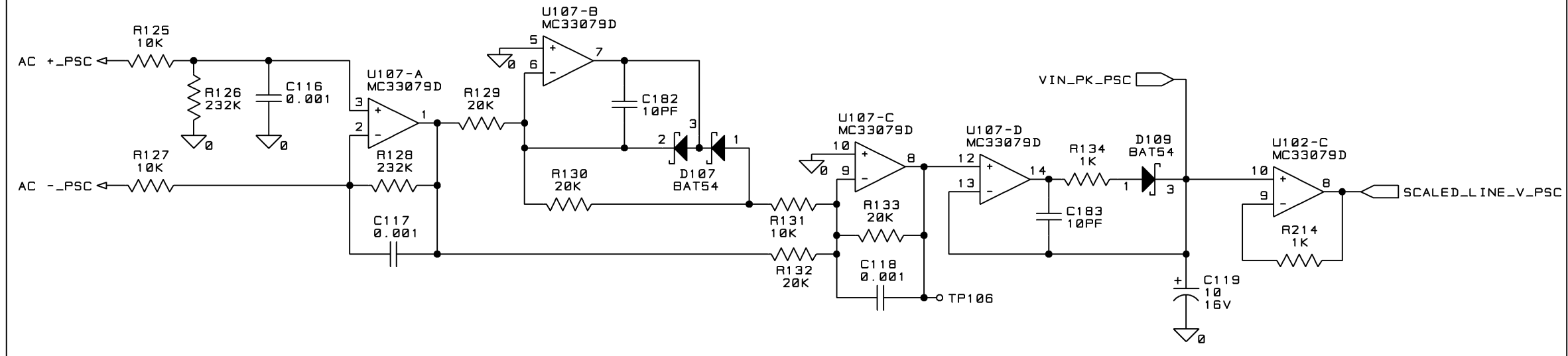
UNCONTROLLED		THESE DRAWINGS AND SPECIFICATIONS ARE THE PROPERTY OF CROWN INTERNATIONAL, INC. AND SHALL NOT BE REPRODUCED, COPIED, OR USED AS THE BASIS FOR THE MANUFACTURE OR SALE OF APPARATUS OR DEVICES WITHOUT PERMISSION.		SIZE	DWG NO.	REV
				D	137101-5	C
SCALE NONE		PROJ NO. MD50120		SHEET 2 OF 4		



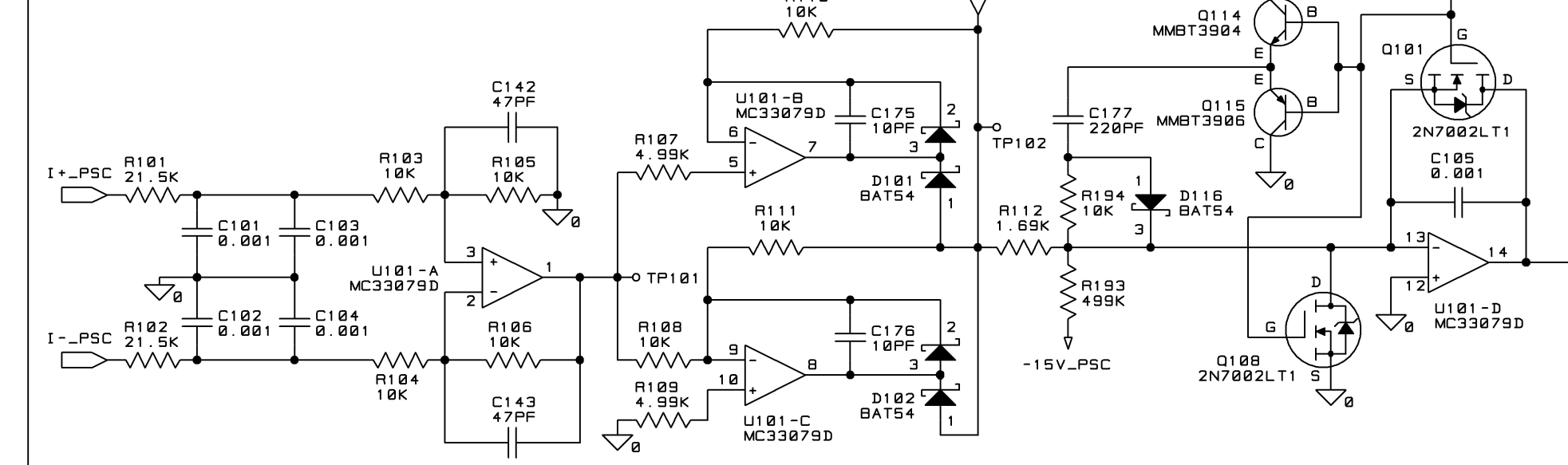
DIFF HV RAIL VOLTAGE SENSE



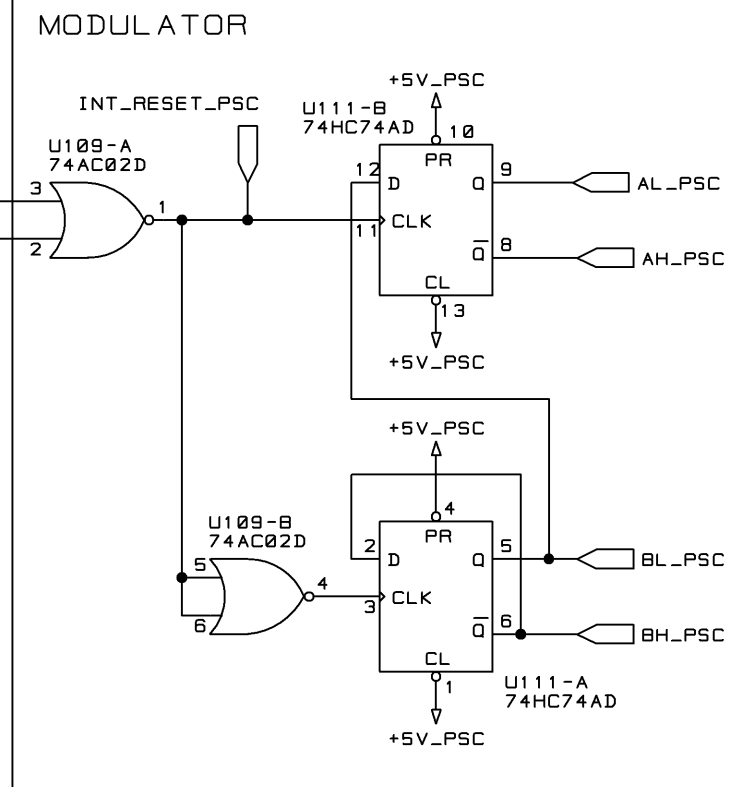
SENSED INPUT VOLTAGE



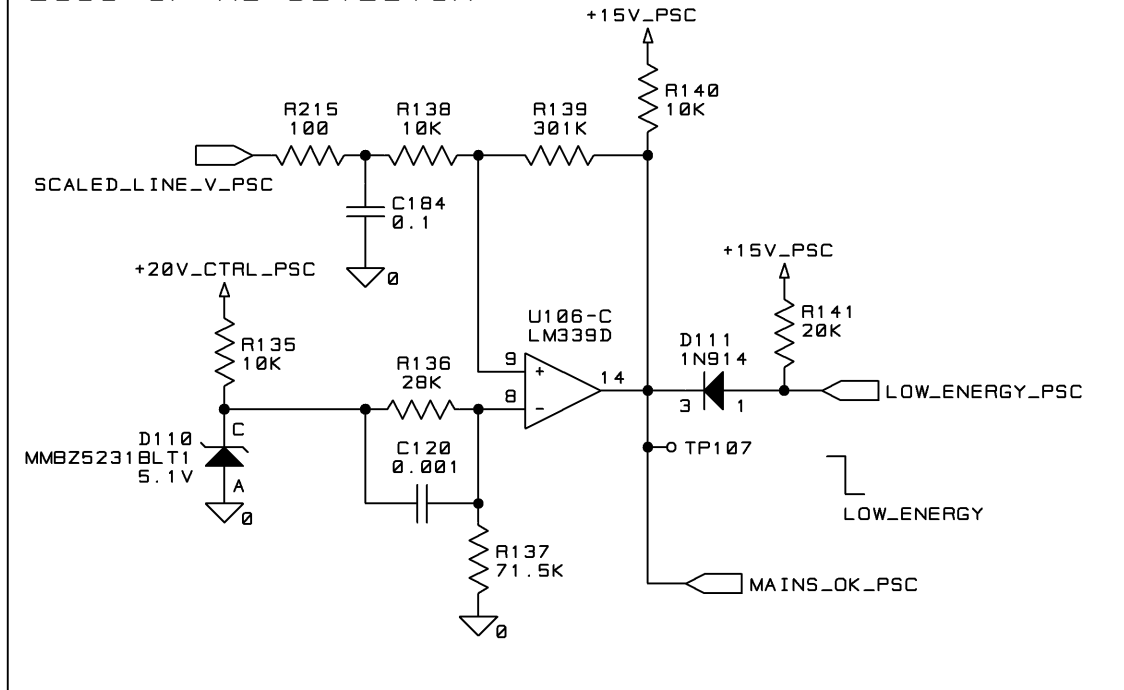
INPUT AVERAGE CURRENT SIG. GEN.



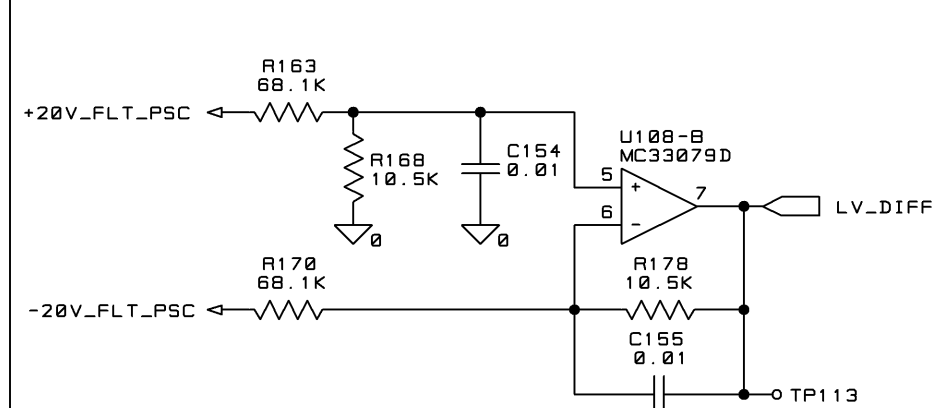
FULL BRIDGE MODULATOR



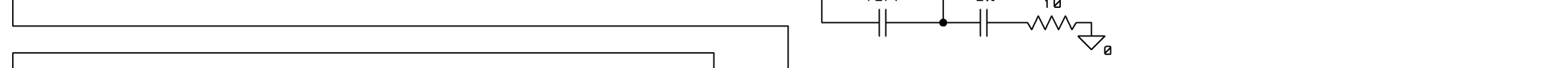
LOSS OF AC DETECTOR



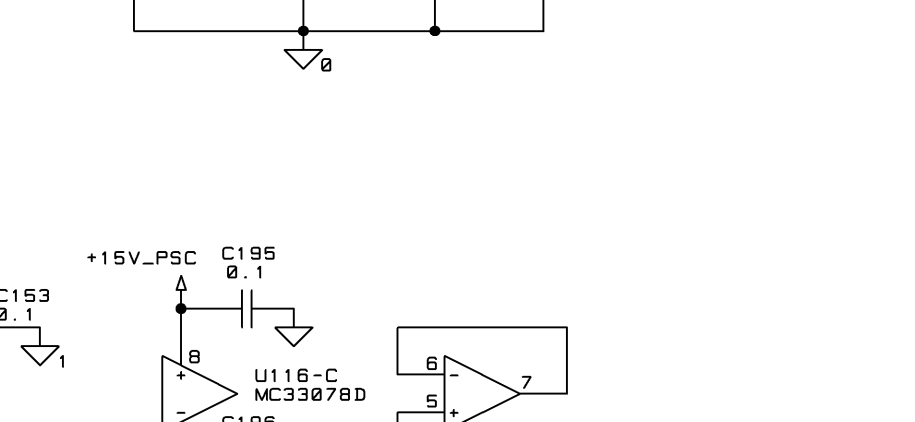
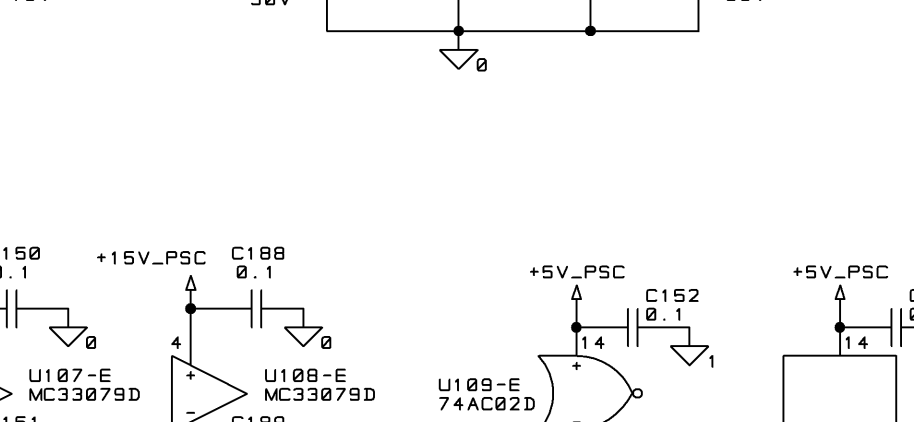
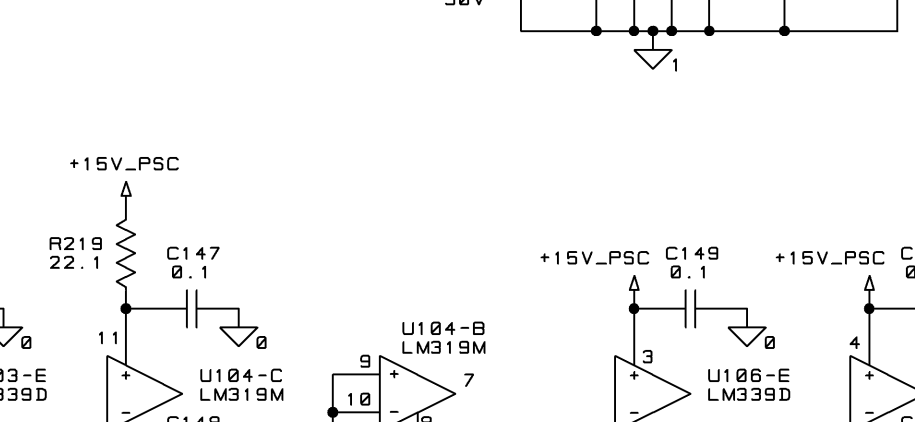
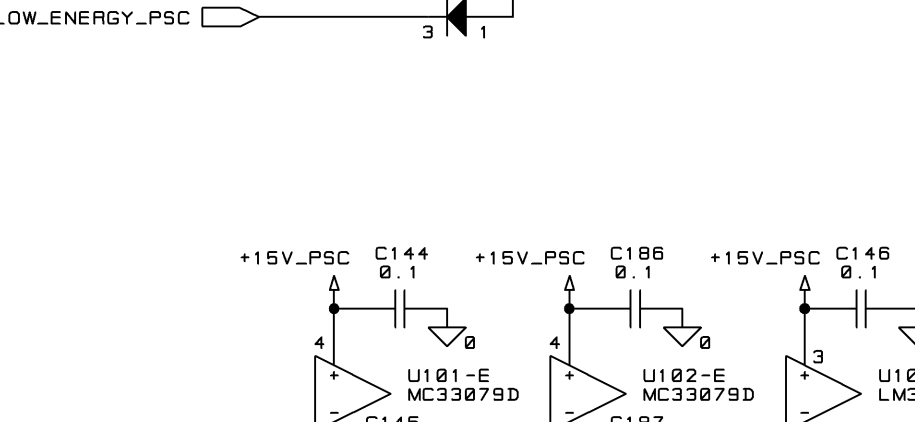
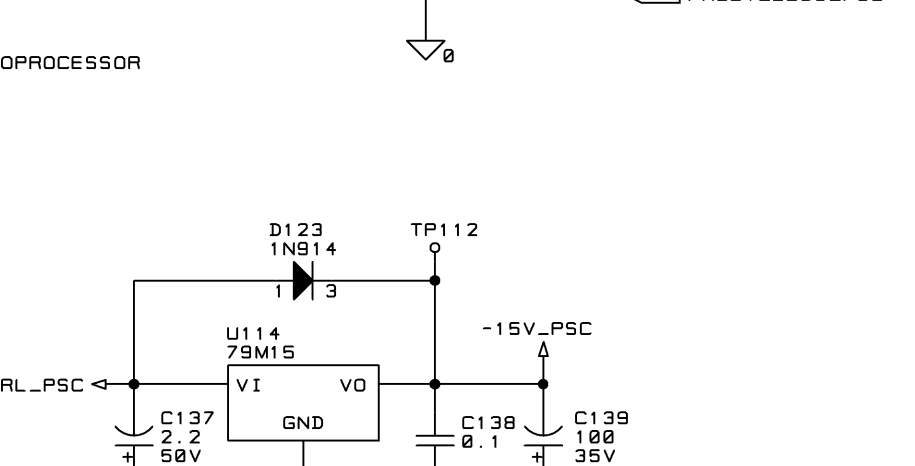
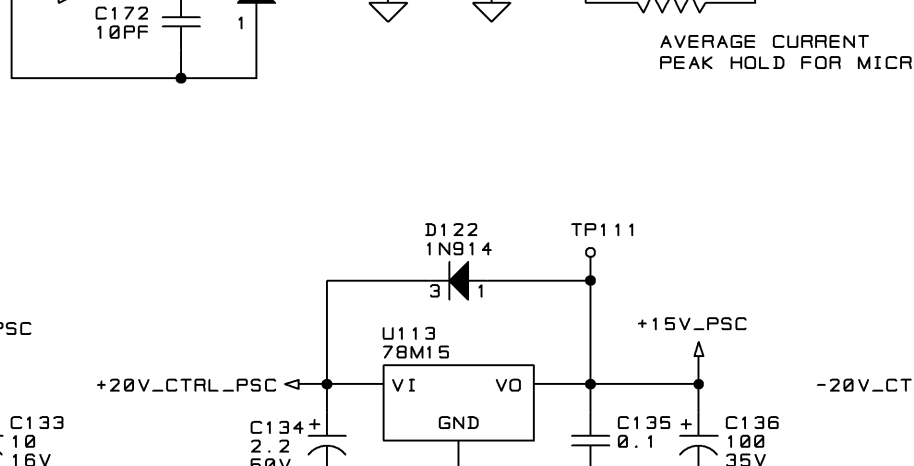
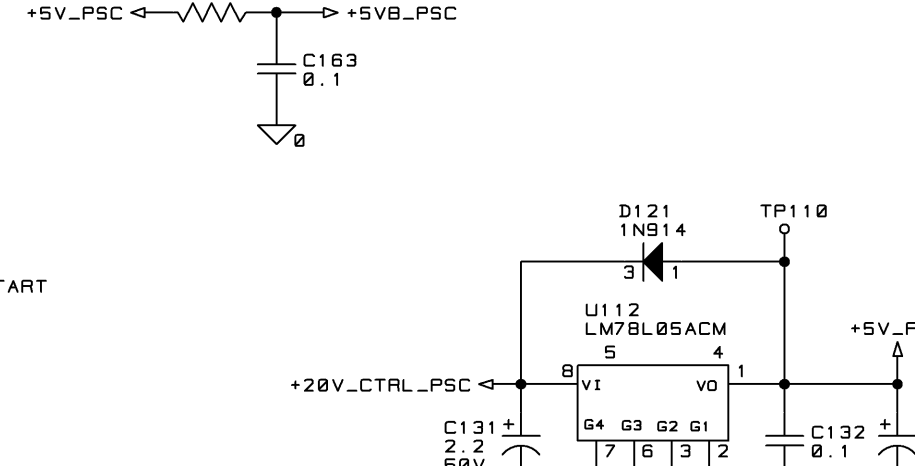
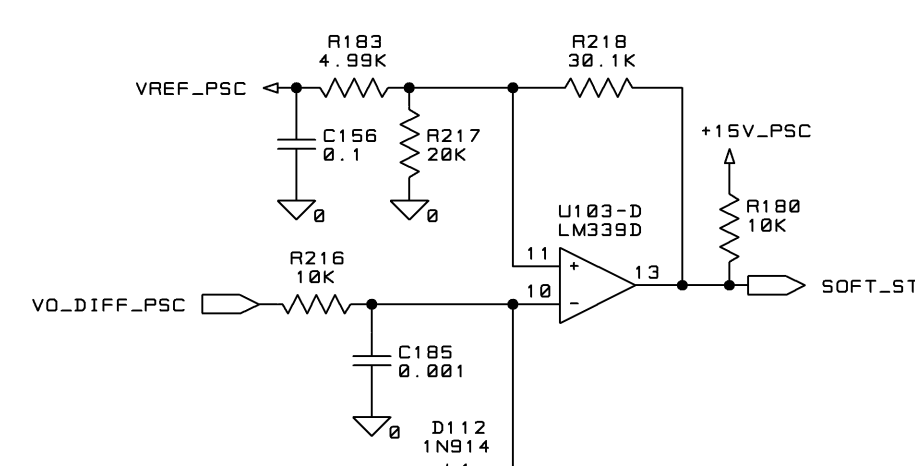
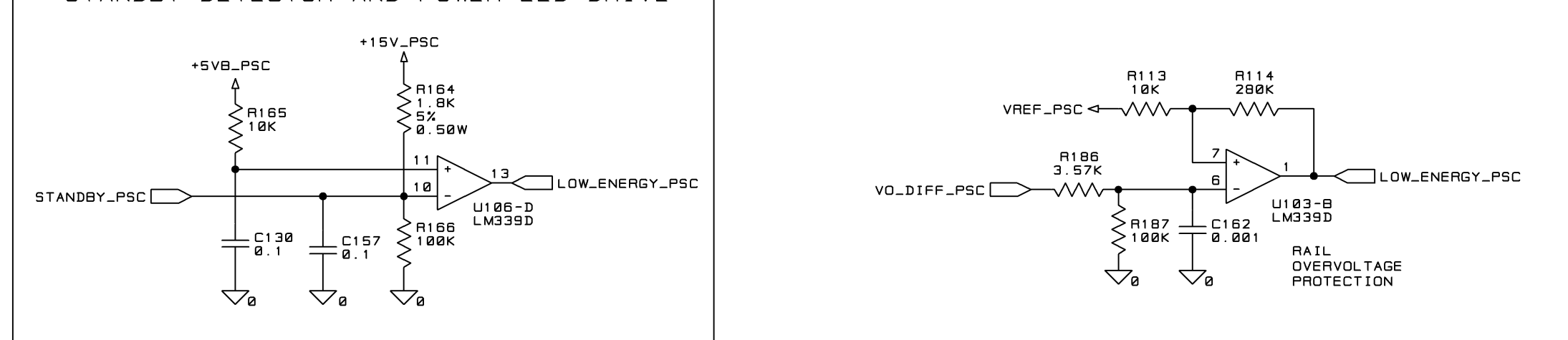
DIFF LV RAIL VOLTAGE SENSE



PS OVER TEMP SHUTDOWN



STANDBY DETECTOR AND POWER LED DRIVE



REFERENCE DESIGNATOR RANGE IS 100-250

© POWER SUPPLY CONTROL

UNCONTROLLED		THESE DRAWINGS AND SPECIFICATIONS ARE THE PROPERTY OF CROWN INTERNATIONAL, INC. AND SHALL NOT BE REPRODUCED, COPIED, OR USED AS THE BASIS FOR THE MANUFACTURE OR SALE OF APPARATUS OR DEVICES WITHOUT PERMISSION.		SIZE	DWG NO.	137101-5	REV
D	SCALE	NONE	PROJ NO.	MD50120	SHEET	4 OF 4	C