

REVISION RECORD			
LTR	ECO NO.	APPROVED	DATE

SOFT1	SOFT2	TH1	TH2	TH3
SOFT3	SOFT4	TH4	TH5	TH6
SOFT5	SOFT6			
SOFT7	SOFT8	BC1	BC2	
SOFT9	SOFT10	PCB PCB1		
SOFT11				

PCB PARTS REQUIRED

6

5

4

3

2

1

OPTION FOR CHAINING UP POWER SUPPLY
TO OTHER METER PCB'S

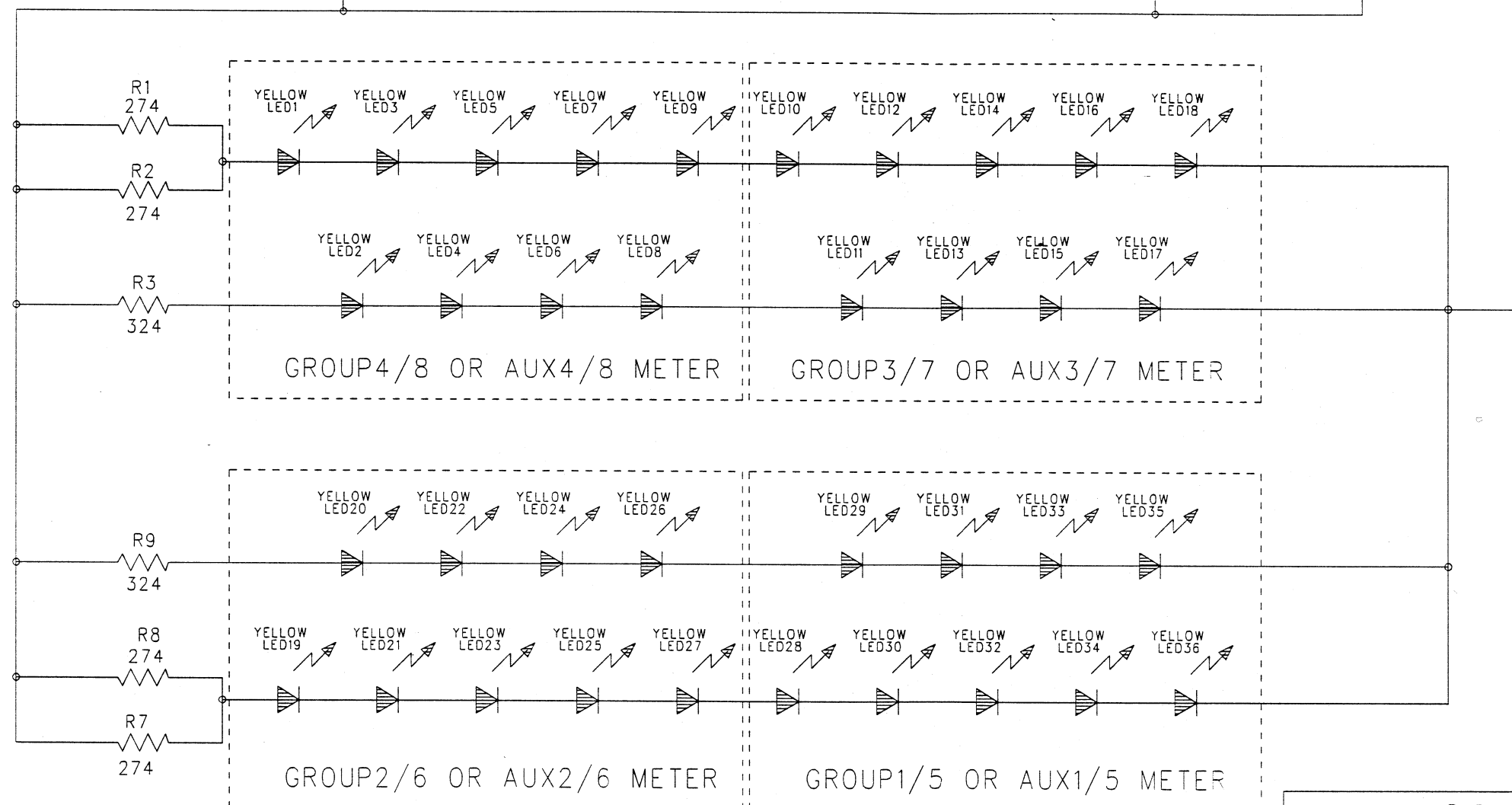
REVISION RECORD

LTR	ECO NO:	APPROVED:	DATE:

J1 J2

J3 J4

+24V



GROUP4/8 OR AUX4/8 METER

GROUP3/7 OR AUX3/7 METER

GROUP2/6 OR AUX2/6 METER

GROUP1/5 OR AUX1/5 METER

MECHANICAL PARTS

TH1 TH3 TH2 TH4
TOOLHOLE TOOLHOLE TOOLHOLE TOOLHOLE

PCB1

PCB

BC1
BECBC2
BEC

COMPANY:

CREST AUDIO

TITLE:

GTX/VX GROUP/AUX METER LED PCB

DRAWN:

TAZ

DATED:

12/94

CHECKED:

DATED:

QUALITY CONTROL:

DATED:

RELEASED:

DATED:

CODE:

SIZE:

DRAWING NO:

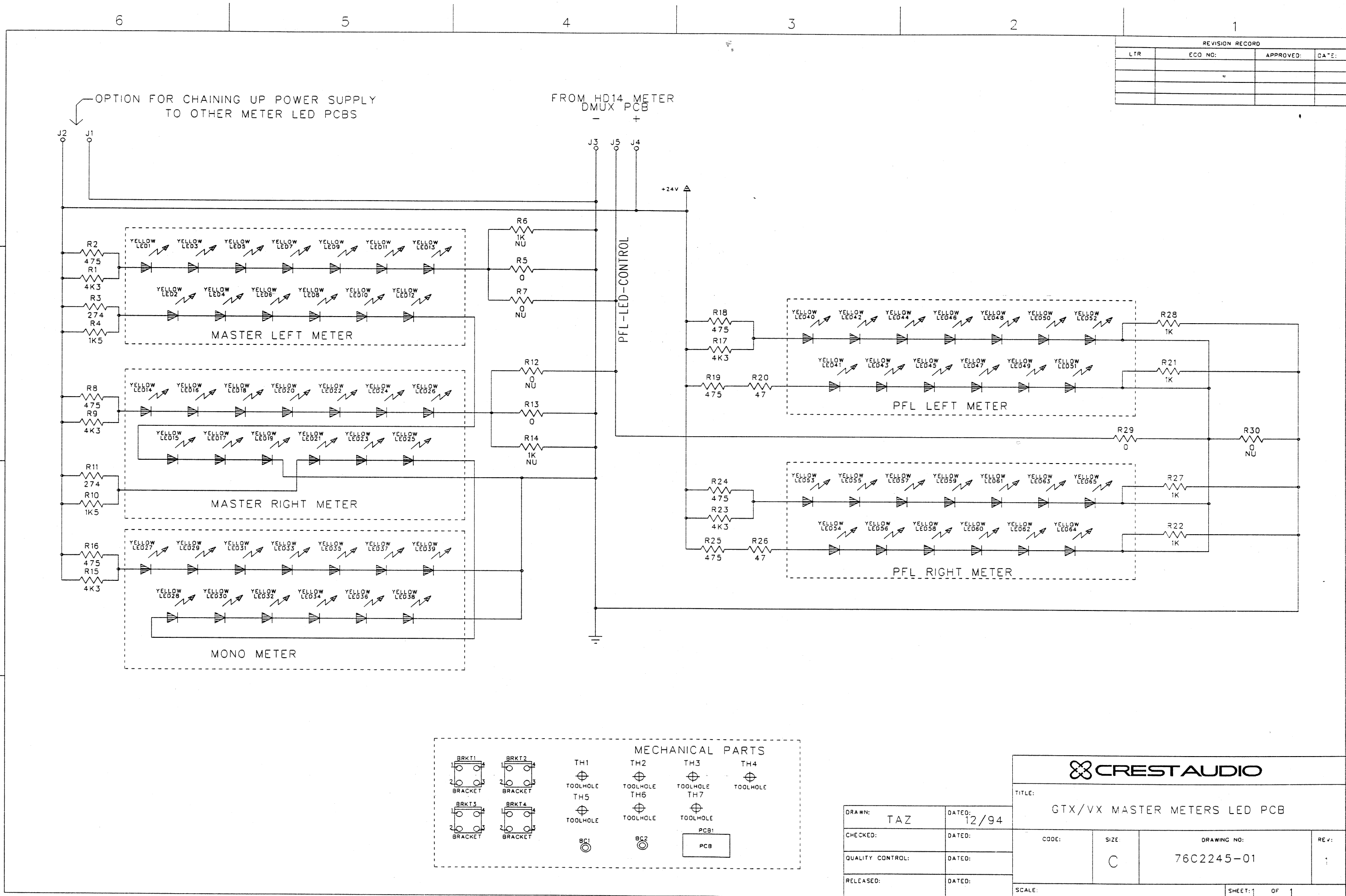
76B2244-01

REV:

0

SCALE:

SHEET: 1 OF 1



Schematic #23

6

5

4

3

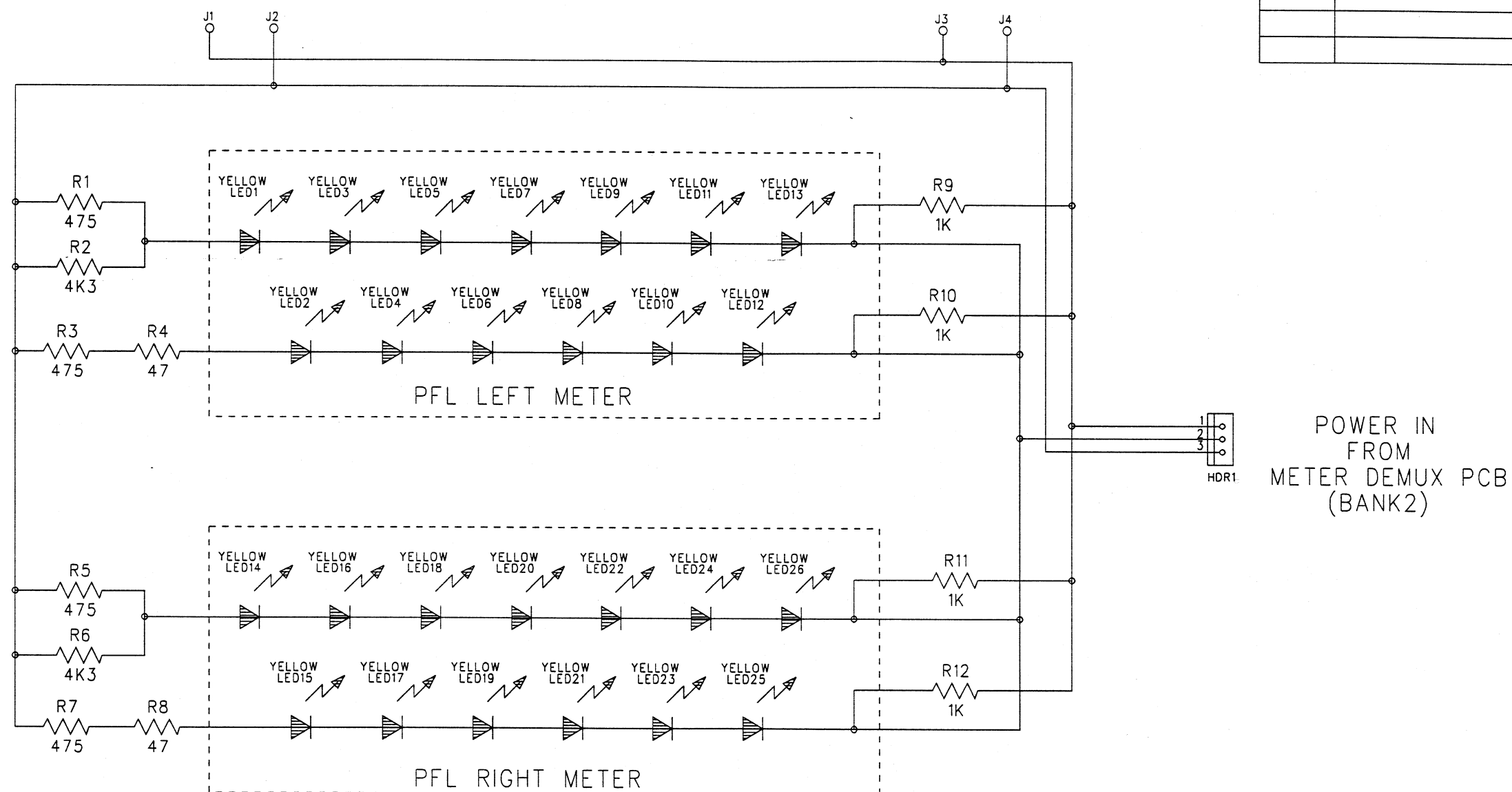
2

1

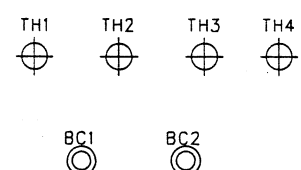
OPTION FOR CHAINING UP POWER SUPPLY
TO OTHER METER LED PCBs

REVISION RECORD

LTR	ECO NO:	APPROVED:	DATE:



MECHANICAL PARTS



COMPANY:

CREST AUDIO

TITLE:

PFL METERS LED PCB

DRAWN:

TAZ

DATED:

10/94

CHECKED:

DATED:

QUALITY CONTROL:

DATED:

RELEASED:

DATED:

CODE:

SIZE:

DRAWING NO:

76B2246-00

REV:

0

SCALE:

SHEET: 1 OF 1

Schematic #24