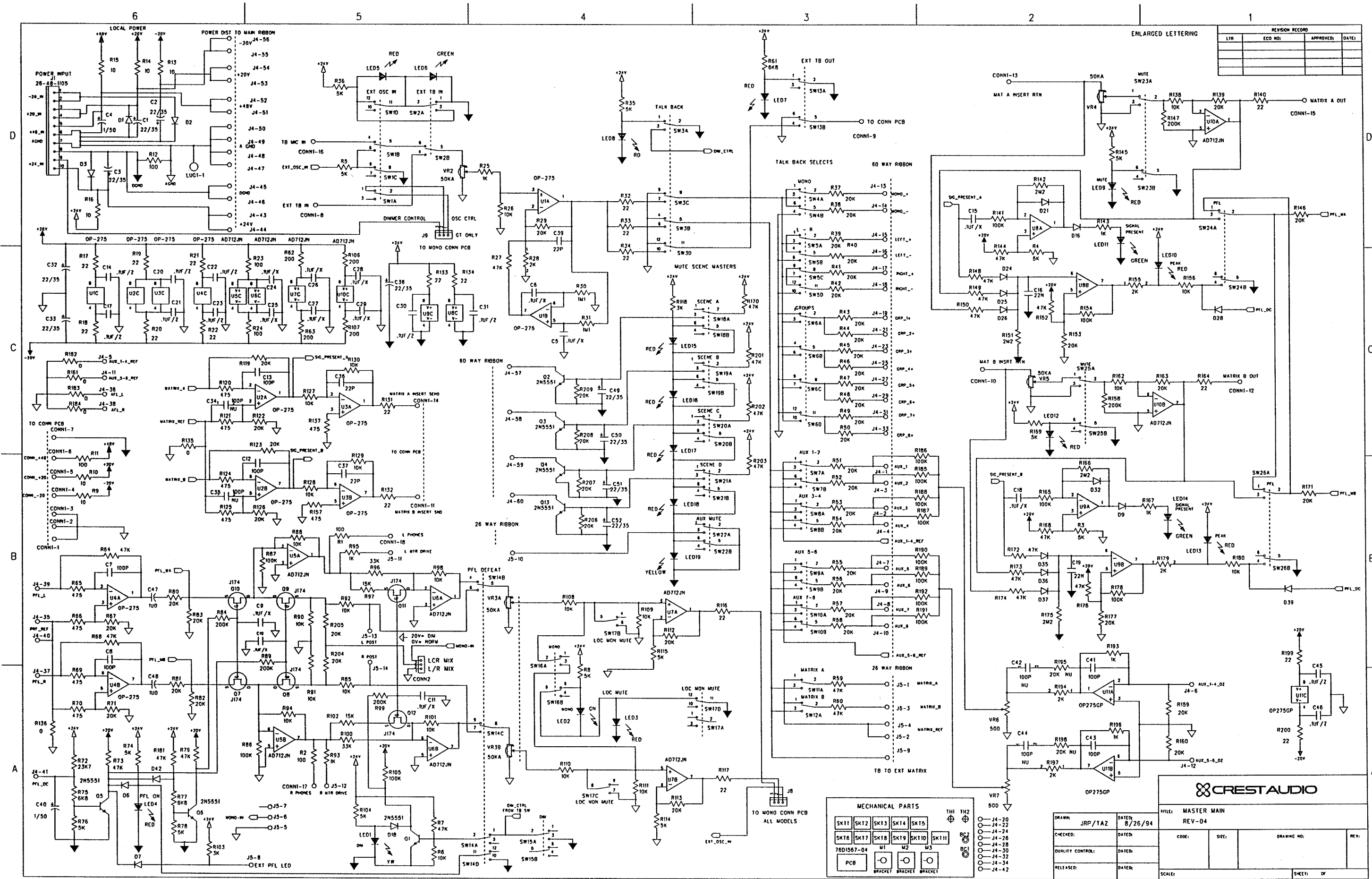


Schematic #14

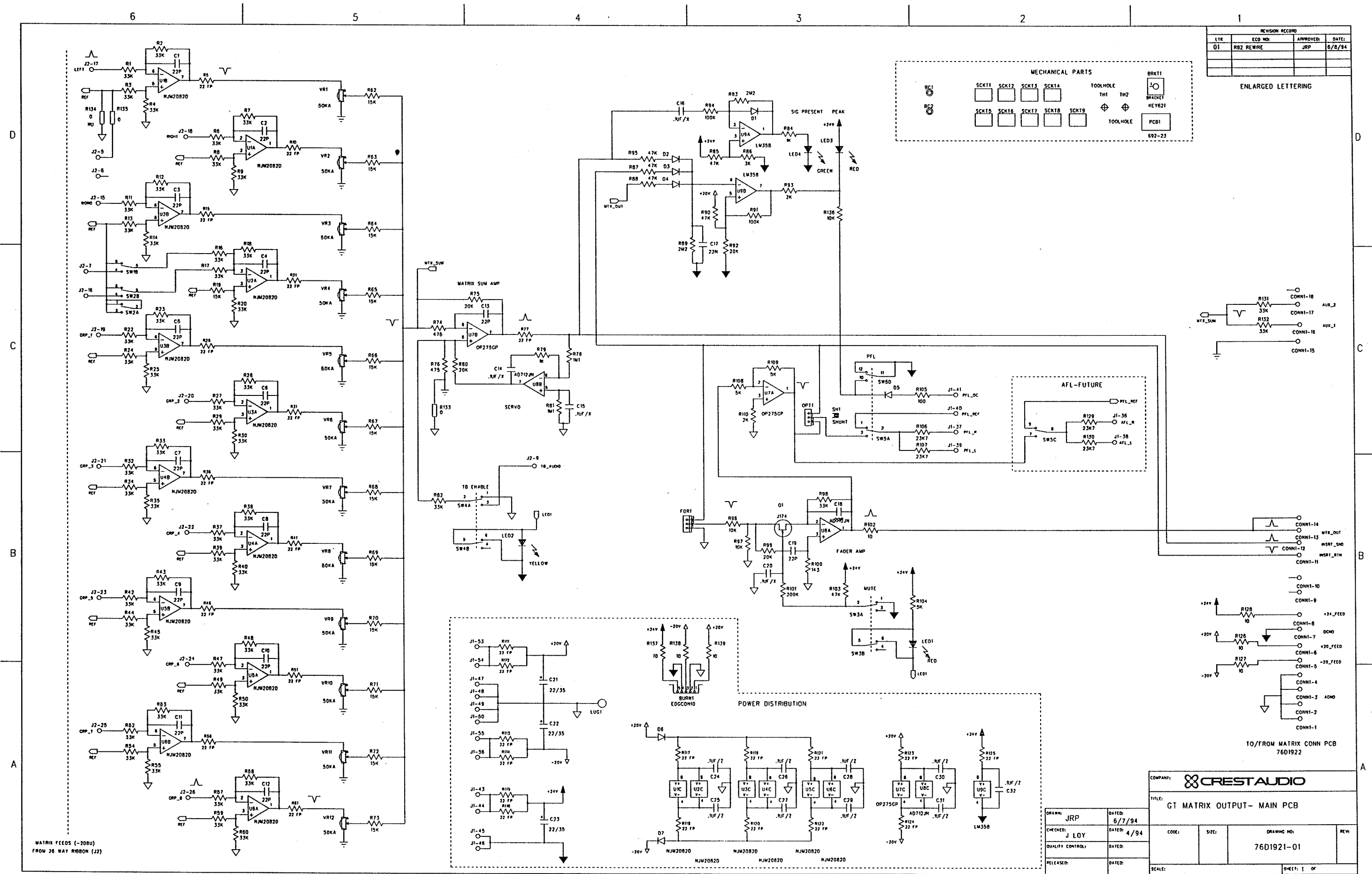


REVISION RECORD			
LTN	ECO NO.	APPROVED	DATE

MECHANICAL PARTS										
SK11	SK12	SK13	SK14	SK15						
SK16	SK17	SK18	SK19	SK20						
7601567-04	M1	M2	M3							
PCB	BRACKET	BRACKET	BRACKET							

CREST AUDIO			
TITLE: MASTER MAIN			
REV-04			
CHECKED:	DATE:	CODE:	SIZE:
QUALITY CONTROL:	DATE:	DRAWING NO:	REV:
RELEASED:	DATE:	SCALE:	SHEET: OF

Schematic #15



Schematic #17



CENTURY SP/TC/GT/GTx RIBBON PIN OUTS

60 WAY MIX BUS RIBBON

Pin #	Signal	Notes	Pin #	Signal	Notes
1	Aux Sum 1		2	Aux Sum 3	
3	Aux Sum 2		4	Aux Sum 4	
5	Aux 1-4 Ref		6	Aux 1-4 Dezoot	
7	Aux Sum 5		8	Aux Sum 7	
9	Aux Sum 6		10	Aux Sum 8	
11	Aux 5-8 Ref		12	Aux 5-8 Dezoot	
13	Mono Sum +		14	Mono Sum -	
15	Left Sum +		16	Left Sum -	
17	Right Sum +		18	Right Sum -	
19	Group 1 Sum +		20	Group 1 Sum -	
21	Group 2 Sum +		22	Group 2 Sum -	
23	Group 3 Sum +		24	Group 3 Sum -	
25	Group 4 Sum +		26	Group 4 Sum -	
27	Group 5 Sum +		28	Group 5 Sum -	
29	Group 6 Sum +		30	Group 6 Sum -	
31	Group 7 Sum +		32	Group 7 Sum -	
33	Group 8 Sum +		34	Group 8 Sum -	
35	PFL Ref		36	AFL Sum R	
37	PFL Sum R		38	AFL Sum L	
39	PFL Sum L		40	PFL Ref	
41	PFL DC		42	SOLO Control	
43	LED +24V		44	LED +24V	
45	LED GND		46	LED GND	
47	AGND		48	AGND	
49	AGND		50	AGND	
51	+48V		52	+48V	
53	+20V		54	+20V	
55	-20V		56	-20V	
57	Mute Scene A		58	Mute Scene B	
59	Mute Scene C		60	Mute Scene D	

26 Way Matrix Ribbon

Pin #	Signal	Notes	Pin #	Signal	Notes
1	Matrix A Sum		2	Matrix Ref	
3	Matrix B Sum		4	Matrix Ref	
5	AGND		6	Post Mono Feed	
7	Program Left (EXT)		8	PFL LED	
9	TB Audio		10	Aux Mute Scene	
11	Left Meter Drive		12	Right Meter Drive	
13	Left Post Fader		14	Right Post Fader	
15	Mono Out (EXT)		16	Program Right (EXT)	
17	Left out (EXT)		18	Right Out (EXT)	
19	Group 1 Out (EXT)		20	Group 2 Out (EXT)	
21	Group 3 Out (EXT)		22	Group 4 Out (EXT)	
23	Group 5 Out (EXT)		24	Group 6 Out (EXT)	
25	Group 7 Out (EXT)		26	Group 8 Out (EXT)	

EXT = Feed To External Matrix