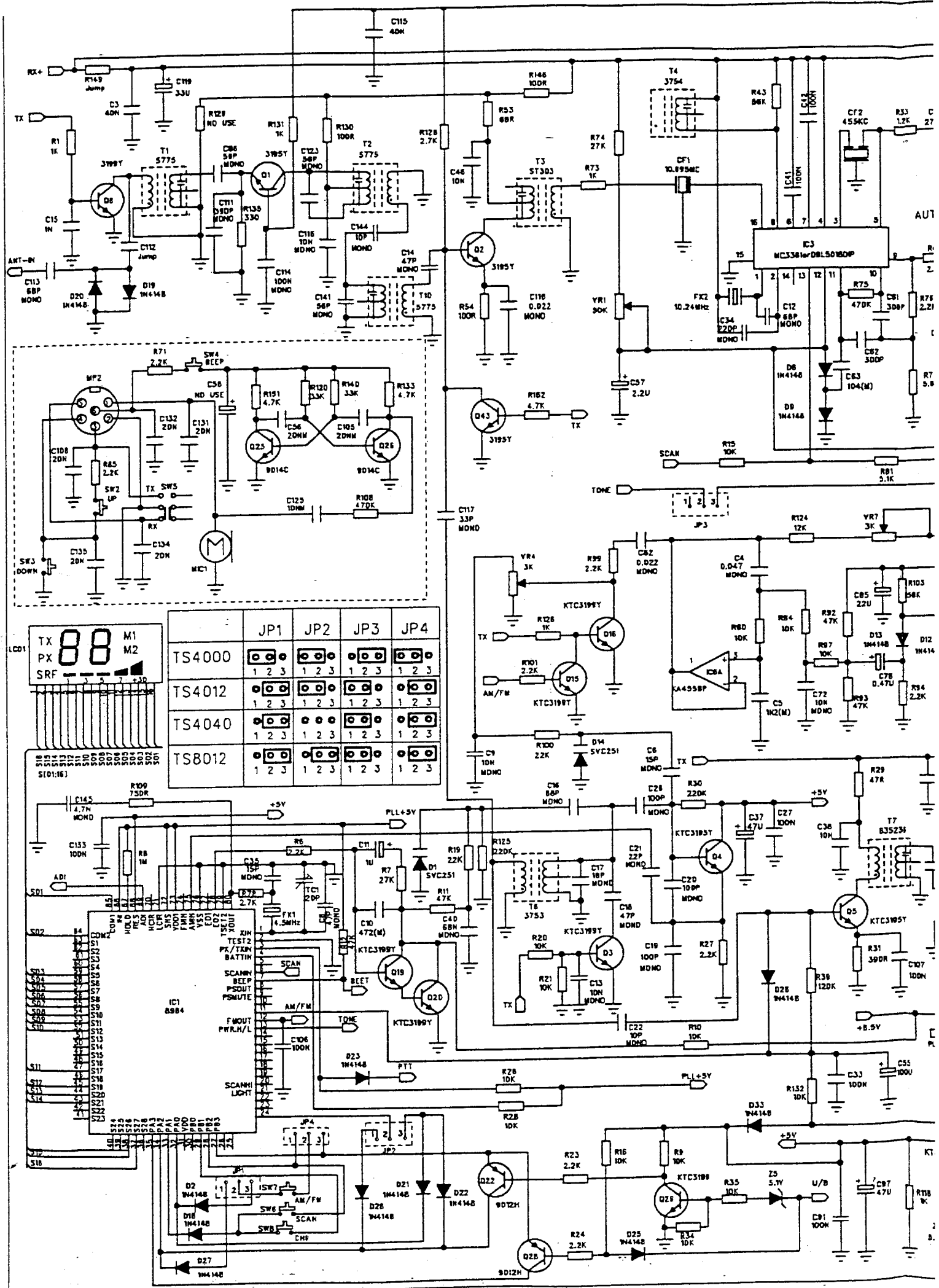
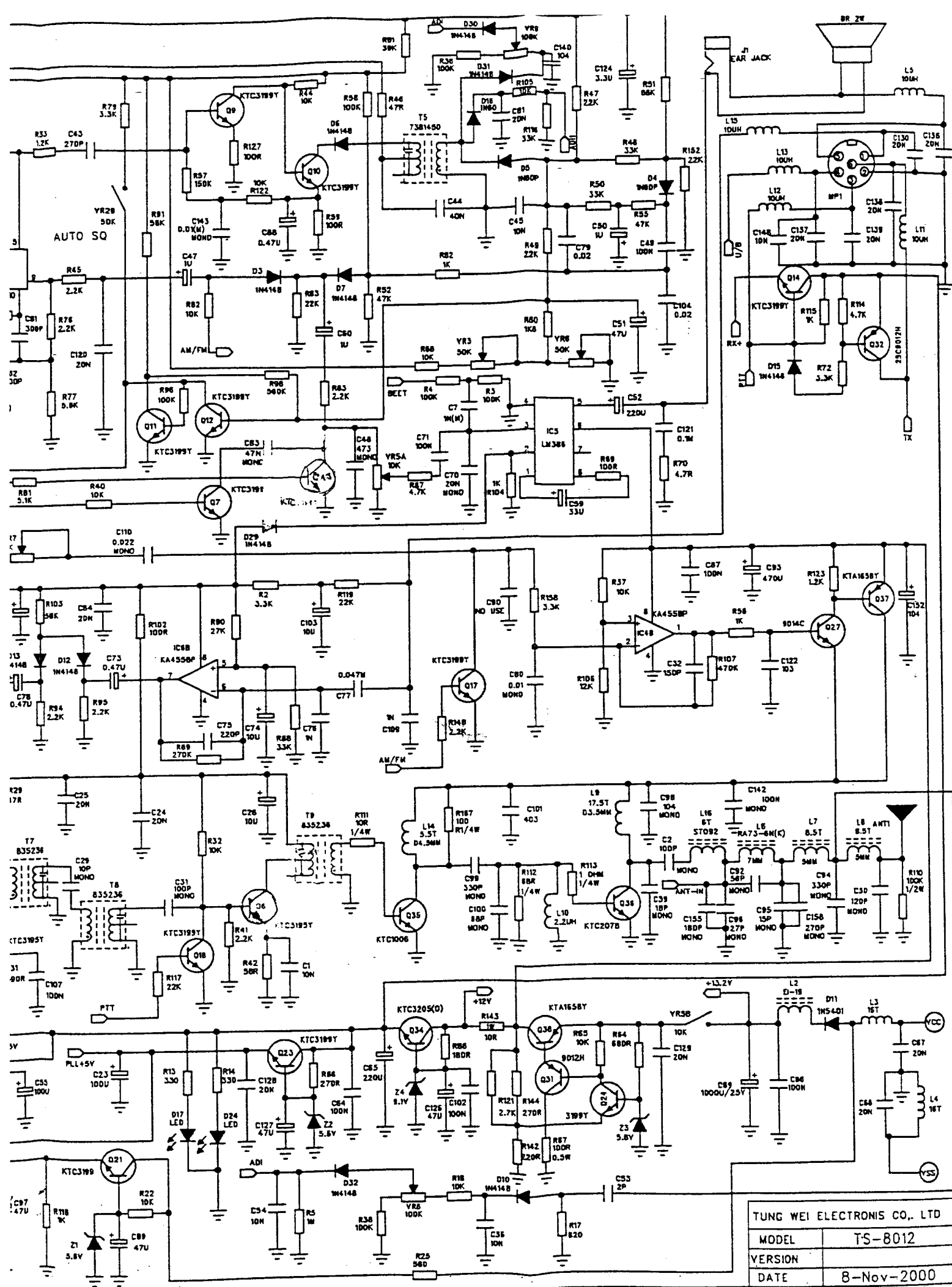
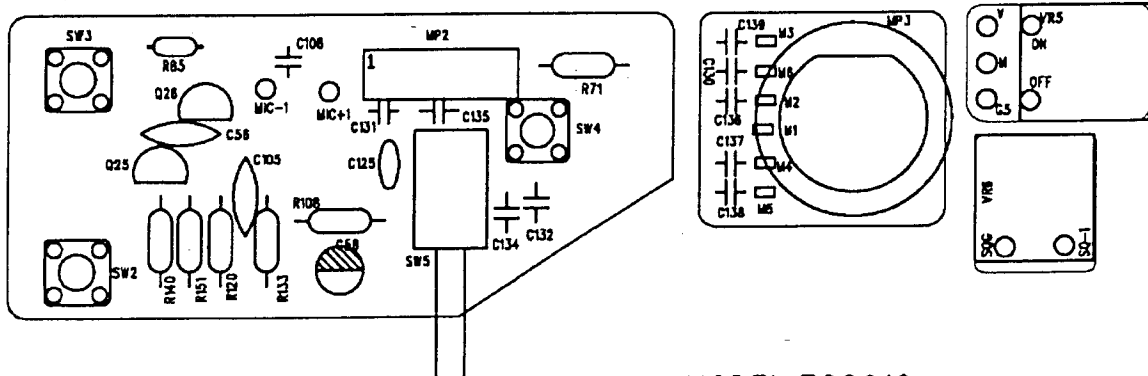
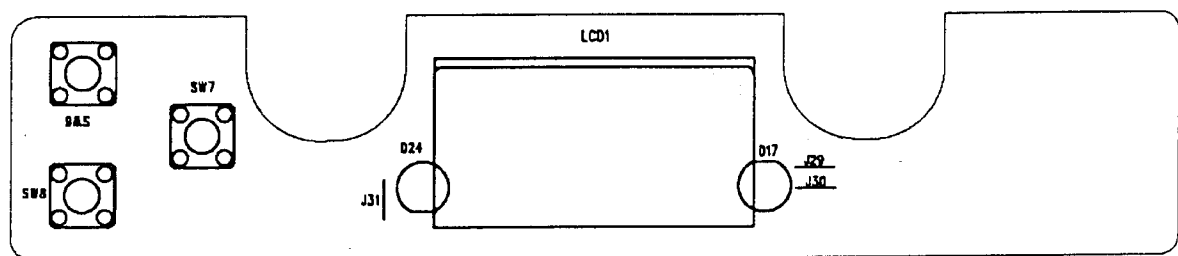
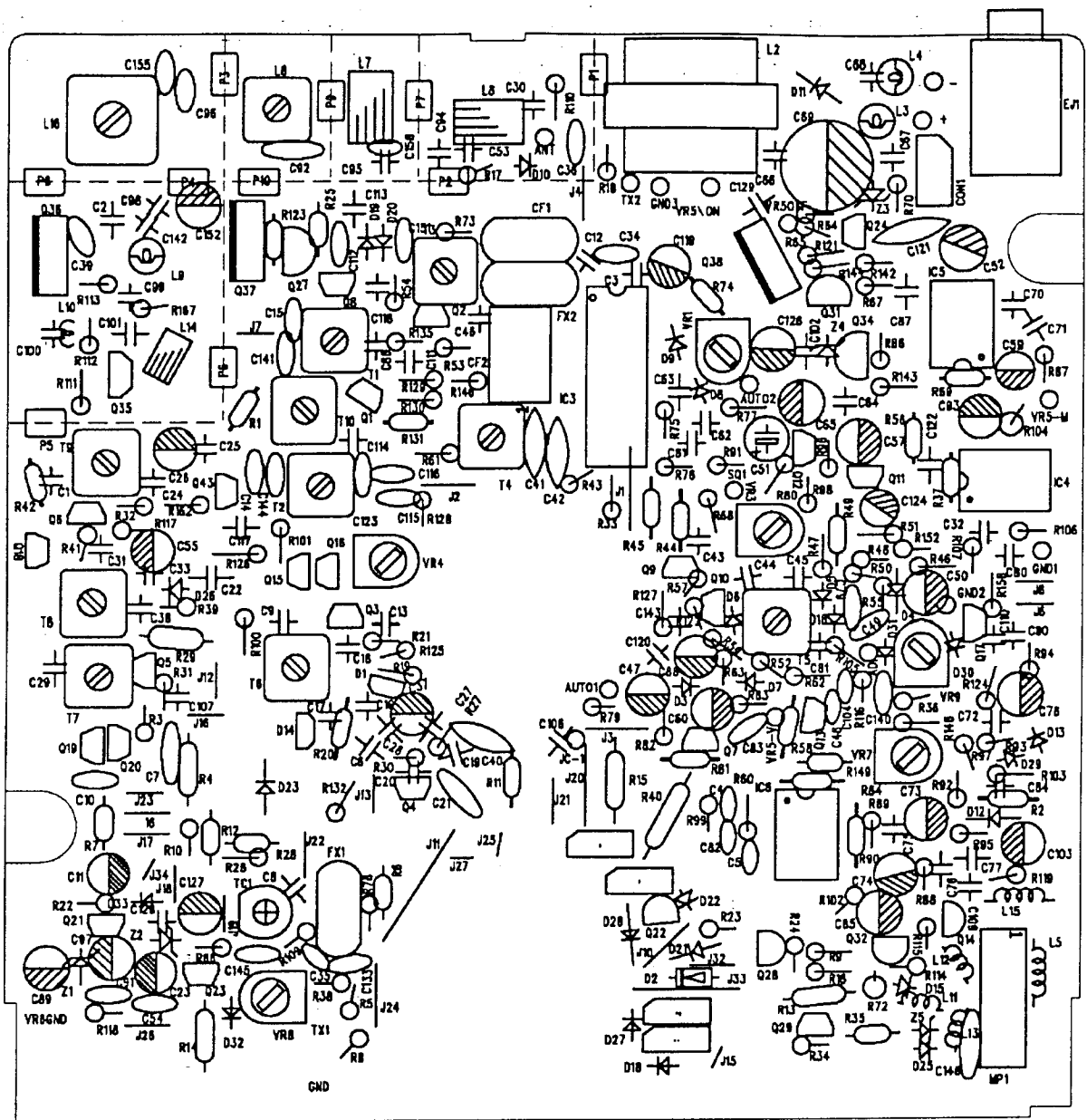


TS-TwoWay 8012
TEAM Electronic



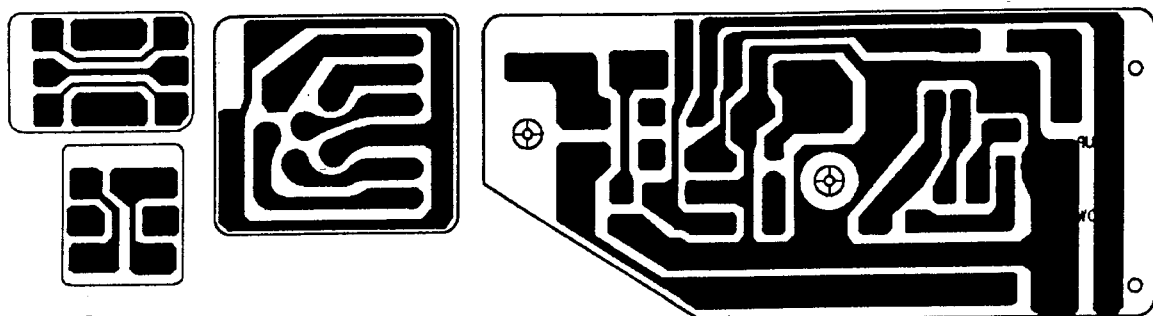
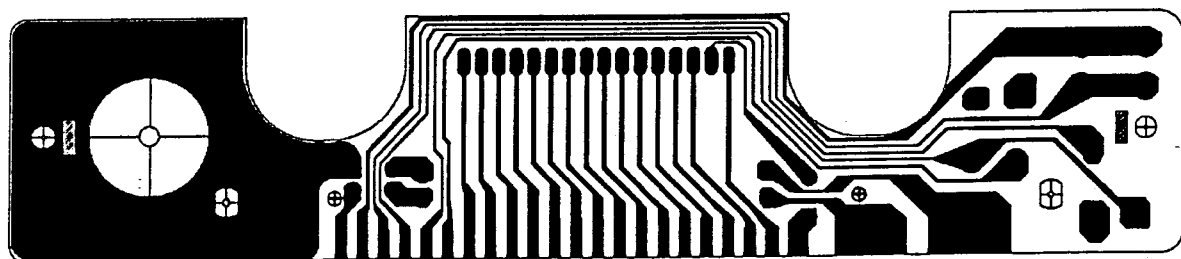
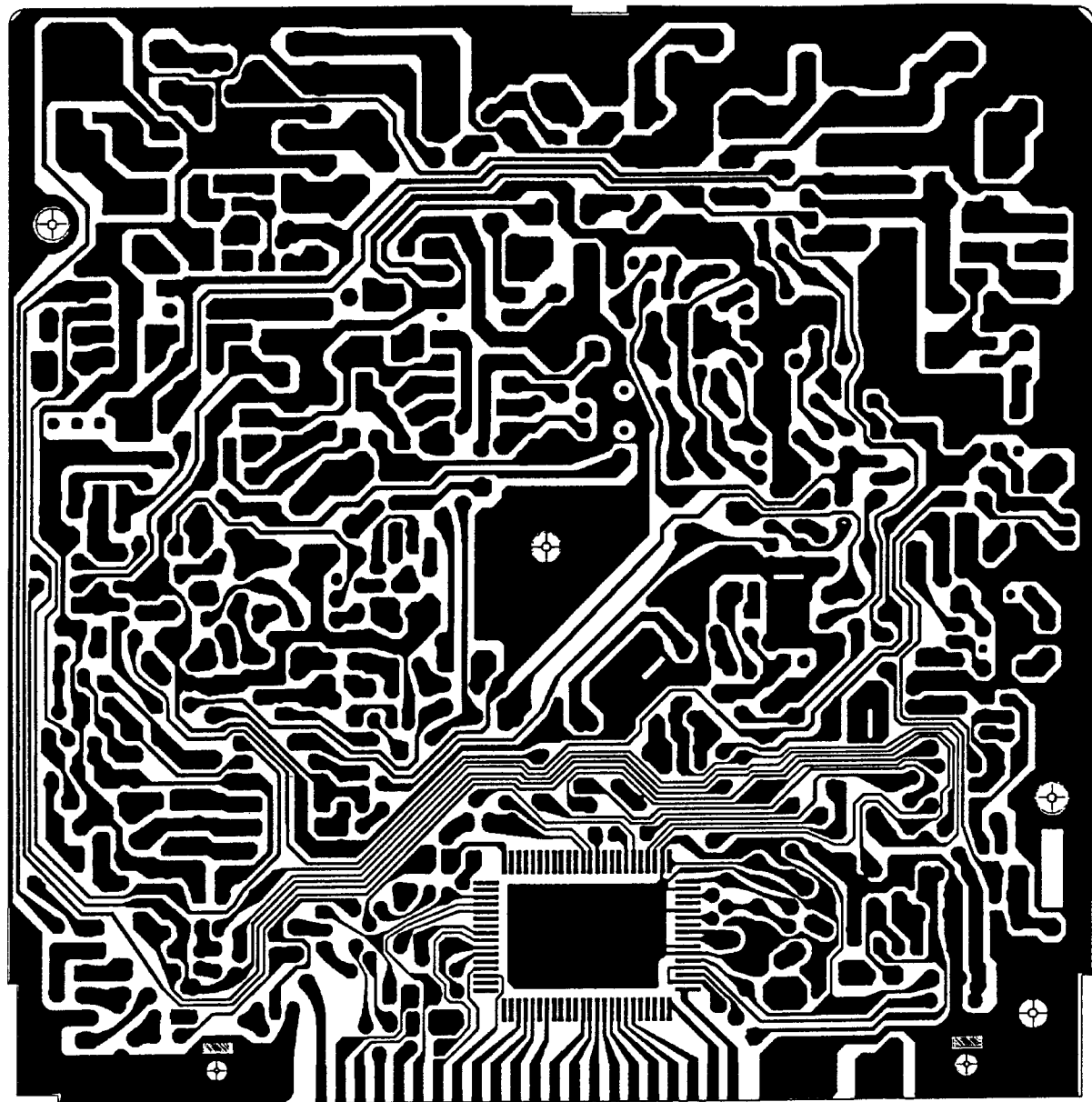




MODEL:TS8012



COMPONENT SIDE



COMPONENT SIDE
MODEL:TS8012

TEAM

MODEL : TS-TwoWay 8012 27MHz 80CH-FM 12CH-AM
WITH 12V CAR PLUG

DATE: 13. Nov 00

PART LIST FOR TS-8012

NO.	DESCRIPTION	QTY	REMARKS
1	P.C.B. TS8012A	1	
2	P.C.B. TS8012B	1	
3	P.C.B. TS8012C	1	
4	P.C.B. TS8012D	1	
5	P.C.B. TS8012E	1	
6	P.C.B. TS8012F	1	
7	I.C.: MC3361BP	1	IC3
8	I.C.: JRC386	1	IC5
9	I.C.: KA4558	2	IC4 IC6
10	I.C.: 8984 CPU	1	IC1
11	LCD DISPLAY 16PIN 32x17.5x1.1MM 4 DN1068	1	LCD1
12	TRANSISTOR: KTC3195Y	6	Q1-2 Q4 Q5 Q8 Q43
13	TRANSISTOR: KTC3199Y	19	Q3 Q7-21 Q23-24 Q29
14	TRANSISTOR: 9012H	4	Q22 Q28 Q31 Q32
15	TRANSISTOR: 9014C	3	Q25 Q26 Q27
16	TRANSISTOR: KTC3205O	1	Q34
17	TRANSISTOR: 2SC1006	1	Q35
18	TRANSISTOR: KTA1658 Y OR O	2	Q37 Q38
19	TRANSISTOR: 2SC2078D/E	1	Q36
20	CRYSTAL 4.50MHz (SIZE:49S)	1	FX1
21	CRYSTAL 10.240MHz (SIZE:49S)	1	FX2
22	CRYSTAL FILTER 10.695MHz	1	CF1
23	AM FILTER LTW33-455HT	1	CF2
24	MINI TRIMMER CAP 6MM 20P	1	TC1
25	ZENER DIODE 5.1V/0.5W	1	Z5
26	ZENER DIODE 5.6V/0.5W	3	Z1 Z2 Z3
27	ZENER DIODE 9.1V/0.5W	1	Z4
28	DIODE IN4148	25	D2-3 D6-10 D12-13 D15 D18-23 D25-33
29	DIODE IN60 P	3	D4 D5 D16
30	DIODE IN5401	1	D11
31	3 mm LED (ORANGE) 414UOD	2	D17 D24
32	DIODE SVC251	2	D1 D14
33	SWITCH:PS22F03(300g)	1	SW5
34	TACT SWITCH: TC102V(130g)	6	SW2-4 SW6-8
35	3.5 mm EARJACK PY-601-N (WEALTH)	1	J1
36	2.5 mm EARJACK EY-501-C W/NUT	1	J2
37	SEMI-FIX 3K (FRB065-302M)	2	VR4 VR7
38	SEMI-FIX 50K (FRB065-503M)	2	VR1 VR3
39	SEMI-FIX 100K (FRB065-104M)	2	VR8 VR9
40	VR RD1210SNAOX-VA1-A103 NUT 7mm	1	VR5
41	VR RD1210SNAOX-VA1-B503 NUT 7mm	1	VR6
42	I.F.T. 835236 (COIL)	3	T7 T8 T9

TEAM

MODEL : TS-TwoWay 8012 27MHz 80CH-FM 12CH-AM
WITH 12V CAR PLUG

DATE: 13. Nov 00

PART LIST FOR TS-8012

NO.	DESCRIPTION	QTY	REMARKS
43	I.F.T. 825775 (COIL) OR KB7320	3	T1 T2 T10
44	I.F.T. (ORANGE) S7541N OR ST303	1	T3
45	I.F.T. (BLACK) 7381450A	1	T5
46	I.F.T. (YELLOW) AH 3754	1	T4
47	I.F.T. (PINK) SH 3753	1	T6
48	7MM COIL RA73-6N(K)	1	L6
49	10MM COIL KB006 6.5T D0.9MM	1	L16
50	F. INDUCTOR CEC36-2R2K 2.2uH	1	L10
51	F. INDUCTOR CEC36-100K 10uH	5	L5 L11 L12 L13 L15
52	FM COIL 8 1/2T D5mm(0.9)CW	2	L7 L8
53	FM COIL 5T D4.5mm(0.6)	1	L14
54	FM COIL 16 1/2T D3mm(0.5)VER	2	L3 L4
55	FM COIL 17 1/2T D3.5mm(0.5)VER	1	L9
56	TRANSFORMER EI-19 ATE 11903	1	L2
57	RESISTOR 1W 10 OHM	1	R143
58	RESISTOR 1/2W 100 OHM	1	R67
59	RESISTOR 1/2W 100K OHM	1	R110
60	RESISTOR 1/4W 1 OHM	1	R113
61	RESISTOR 1/4W 10 OHM	1	R111
62	RESISTOR 1/4W 68 OHM	1	R112
63	RESISTOR 1/4W 100 OHM	1	R167
64	RESISTOR 1/8W 4.7 OHM	1	R70
65	RESISTOR 1/8W 47 OHM	2	R29 R46
66	RESISTOR 1/8W 56 OHM	1	R42
67	RESISTOR 1/8W 68 OHM	1	R53
68	RESISTOR 1/8W 100 OHM	7	R54 R59 R69 R102 R127 R130 R146
69	RESISTOR 1/8W 180 OHM	1	R86
70	RESISTOR 1/8W 220 OHM	1	R142
71	RESISTOR 1/8W 270 OHM	2	R66 R144
72	RESISTOR 1/8W 330 OHM	3	R13 R14 R135
73	RESISTOR 1/8W 390 OHM	1	R31
74	RESISTOR 1/8W 560 OHM	1	R25
75	RESISTOR 1/8W 680 OHM	1	R64
76	RESISTOR 1/8W 750 OHM	1	R109
77	RESISTOR 1/8W 820 OHM	1	R17
78	RESISTOR 1/8W 1K	9	R1 56 62 73 104 115 118 126 131
79	RESISTOR 1/8W 1.2K	2	R33 R123
80	RESISTOR 1/8W 1.8K	1	R80
81	RESISTOR 1/8W 2.2K	15	R6 23 24 27 41 45 71 76 83 85 94-95 99 101 148
82	RESISTOR 1/8W 2.7K	3	R78 R121 R128
83	RESISTOR 1/8W 3.3K	4	R2 R72 R79 R158

TEAM

DATE: 13. Nov 00

MODEL : TS-TwoWay 8012 27MHz 80CH-FM 12CH-AM
WITH 12V CAR PLUG

PART LIST FOR TS-8012

NO.	DESCRIPTION	QTY	REMARKS
84	RESISTOR 1/8W 4.7K	5	R87 R114 R133 R151 R162
85	RESISTOR 1/8W 5.1K	1	R81
86	RESISTOR 1/8W 5.6K	1	R77
87	RESISTOR 1/8W 10K	25	R9 10 15 16 18 20-22 26 28 32 34-35 37 40 44 60 65 68 82 84 97 105
88	RESISTOR 1/8W 12K	2	R122 R132
89	RESISTOR 1/8W 22K	8	R106 R124
90	RESISTOR 1/8W 27K	3	R19 R47 R49 R63 R100 R117 R119 R152
91	RESISTOR 1/8W 33K	6	R7 R74 R90
92	RESISTOR 1/8W 39K	1	R48 R50 R88 R116 R120 R140
93	RESISTOR 1/8W 47K	6	R61
94	RESISTOR 1/8W 56K	3	R11 R12 R52 R55 R92 R93
95	RESISTOR 1/8W 68K	1	R43 R91 R103
96	RESISTOR 1/8W 100K	6	R51
97	RESISTOR 1/8W 120K	1	R3 R4 R36 R38 R58 R96
98	RESISTOR 1/8W 150K	1	R39
99	RESISTOR 1/8W 220K	2	R57
100	RESISTOR 1/8W 270K	1	R30 R125
101	RESISTOR 1/8W 470K	3	R89
102	RESISTOR 1/8W 560K	1	R75 R107 R108
103	RESISTOR 1/8W 1M	2	R98
104	C. CAP: 2 PF C +/-0.5%	1	R5 R8
105	C. CAP: 150 PF C +/-10%	1	C53
106	C. CAP: 220 PF C +/-10%	1	C32
107	C. CAP: 270 PF C +/-10%	1	C75
108	C. CAP: 300 PF C +/-5%	2	C43
109	C. CAP: 102 PF C +80/-20%	3	C61 C62
110	C. CAP: 103 PF C +80/-20%	8	C15 C76 C109
111	C. CAP: 203 PF C +80/-20%	21	C1 C36 C38 C45 C46 C54 C122 C148
112	C. CAP: 403 PF C +80/-20%	4	C24-25 67-68 79 81 84 104 108 120 128-132 134-139
113	C. CAP: 104 PF C +80/-20%	16	C3 C44 C101 C115 +1PC C101
114	MYLAR CAP: 102 PF C +/-10%	1	C27 33 41 42 49 64 66 71 87 91 102 106 107 133 140 152
115	MYLAR CAP: 122 PF C +/-10%	1	C7
116	MYLAR CAP: 472 PF C +/-10%	1	C5
117	MYLAR CAP: 103 PF C +/-10%	1	C10
118	MYLAR CAP: 203 PF C +/-10%	2	C125
119	MYLAR CAP: 473 PF C +/-10%	1	C56 C105
120	MYLAR CAP: 104 PF C +/-10%	2	C77
121	MONO CAP: 10 PF TOL: +/-5%F	3	C83 C121
122	MONO CAP: 15 PF TOL: +/-5%F	3	C22 C29 C144
123	MONO CAP: 18 PF TOL: +/-5%F	2	C6 C35 C95
			C17 C39

TEAM

MODEL : TS-TwoWay 8012 27MHz 80CH-FM 12CH-AM
WITH 12V CAR PLUG

DATE: 13. Nov 00

PART LIST FOR TS-8012

NO.	DESCRIPTION	QTY	REMARKS
124	MONO CAP: 22 PF TOL: +/-5%F	1	C21
125	MONO CAP: 27 PF TOL: +/-5%F	1	C96
126	MONO CAP: 33 PF TOL: +/-5%F	1	C117
127	MONO CAP: 47 PF TOL: +/-5%F	3	C8 C14 C18
128	MONO CAP: 56 PF TOL: +/-5%F	4	C86 C92 C123 C141
129	MONO CAP: 68 PF TOL: +/-5%F	4	C12 C16 C100 C113
130	MONO CPA: 100 PF TOL: +/-5%F	5	C2 C19 C20 C28 C31
131	MONO CPA: 120 PF TOL: +/-5%F	1	C30
132	MONO CAP: 180 PF TOL: +/-5%F	1	C155
133	MONO CAP: 220 PF TOL: +/-5%F	1	C34
134	MONO CAP: 270 PF TOL: +/-5%F	1	C158
135	MONO CPA: 330 PF TOL: +/-5%F	2	C94 C99
136	MONO CAP: 390 PF TOL: +/-5%F	1	C111
137	MONO CAP: 472 PF TOL: +/-10%F	1	C145
138	MONO CPA: 103 PF TOL: +/-10%F	6	C9 C13 C72 C80 C116 C143
139	MONO CAP: 223 PF TOL: +/-10%F	4	C70 C82 C110 C118
140	MONO CAP: 473 PF TOL: +/-10%F	3	C4 C48 C83
141	MONO CAP: 683 PF TOL: +/-10%F	1	C40
142	MONO CAP: 104 PF TOL: +/-10%F	3	C98 C114 C142
143	MINI E. CAP 0.47uF/16V +/-20%	3	C73 C78 C88
144	MINI E. CAP 1uF/50V +/-20%	4	C11 C47 C50 C60
145	MINI E. CAP 2.2uF/25V +/-20%	1	C57
146	MINI E. CAP 3.3uF/25V +/-20%	1	C124
147	MINI E. CAP 10uF/16V +/-20%	3	C26 C74 C103
148	MINI E. CAP 22uF/16V +/-20%	1	C85
149	MINI E. CAP 33uF/16V +/-20%	2	C59 C119
150	MINI E. CAP 47uF/16V +/-20%	6	C37 C51 C89 C97 C126 C127
151	E. CAP 100uF/16V +/-20%	2	C23 C55
152	E. CAP 220uF/16V +/-20%	2	C52 C65
153	E. CAP 470uF/16V +/-20%	1	C93
154	E. CAP 1000uF/25V +/-20%	1	C69
155	SPEAKER 2 1/2" 8 OHM 2W(ANLICO) YD66-4	1	WITH 4 MOUNTING HOLD
156	CONDENSER MIC. HT-262	1	
157	UHF ANTENNA ADAPTOR NO: 259 JACK	1	
158	5MM 6 POS MIC SCKET WITH 5C+1 CPU COIL CABL	1	MAN WAI
159	6 POS MIC PLUG	1	MAN WAI
160	5FT RED-BLK TWIN WIRE W/2A FUSE HOLD	1	MAN WAI
161	6 PIN WAFER STRAIGHT TYPE	1	MAN WAI
162	6 PIN WIRE HAMESS W/6PIN HOUSING 100MM	1	REACH POWER
163	2.5mm PITCH WAFER STR TYPE(JS1132-2)	1	REACH POWER
164	2.5mm PITCH ASS'Y 100mm R&B WIRE(TW-JS1131/100)	1	REACH POWER

TEAM

MODEL : TS-TwoWay 8012 27MHz 80CH-FM 12CH-AM
WITH 12V CAR PLUG

DATE: 13. Nov 00

PART LIST FOR TS-8012

NO.	DESCRIPTION	QTY	REMARKS
165	MINI-JUMPER 2.54mm OPEN ENDS(2700-G6B)	4	
166	3 ST TYPE POST HEADER 2.54MM SINGLE ROW	4	
167	#28 SHIELD WIRE 80mm (GREY)	1	
168	#28 SHIELD WIRE 100mm (GREY)	1	METER TO S-METER
169	#28 SHIELD WIRE 120mm (GREY)	1	PCB TO VR5
170	#28 SHIELD WIRE 170mm (GREY)	1	TX LEVEL1 TO TX LEVEL2
171	7x1.3 WIRE 70mm (BLACK)	1	TS8012A PCB TO TS8012D PCB
172	7x1.3 WIRE 90mm (YELLOW)	1	AUTO1 TO TS8012D PCB VR
173	7x1.3 WIRE 110mm (BLUE)	1	SQ1 TO TS8012D PCB SQ-1
174	7x1.3 WIRE 130mm (ORANGE)	1	AUTO2 TO TS8012D PCB VR
175	7x1.3 WIRE 150mm (RED)	2	VR5 ON TO VR PCB ON, VR5 OFF TO VR PCB OFF
176	TINY COPPER WIRE 50mm	32	
177	BLACK FOAM RUBBER W/A 2x2x35mm	2	
178	METAL PART	1	
179	COPPER HEATSINK PLATE 1x12x20mm	1	
180	COPPER HEATSINK PLATE THICK 0.5	1	
181	MYLAR PLATE 17x12+D3x0.188(T-60 PET)	1	LEADER HAVE TO 2078
182	TRANSISTOR WASHER PG604	1	PIONEER-TECH HAVE TO 2078
183	SCREW: FTM2.6x5	4	FRONT CAB 4
184	SCREW: PTM2x4	8	DISPLAY PCB 8
185	SCREW: P3M2.6x6 W/NUT	4	FOR SPK 4
186	SCREW: BM3x8 W/NUT	3	FOR TR Q37 1658A 1PC, Q36 C2078 1PC, Q38 1658A 1 PC
187	SCREW: PT3x6	1	MIC CLIP 1
188	SCREW: P3A2.6x8	1	MIC PCB 1
189	SCREW: PA2.6x12	1	MIC CAB 1
190	SCREW: BTM2.6x5	8	FOR CAB 8
191	SCREW: PTM3x5	1	DC CORD 1
192	SCREW: TA3.5x8	2	FOR MIC MATEL HOLDER 2
193	SCREW: BM3x8	2	FOR MAIN P.C.B. 2
194	SPEC. SCREW 6x12 CM	2	FOR MATEL HOLDER
195	SCREW: TA5x20	2	FOR BLACKER
196	CUSHION D9.5xD19xTH3mm	2	
197	BLACK FOAM RUBBER W/A D23x2mm	1	FOR SPEAKER
198	BLACK FOAM RUBBER W/A 2x2x35mm	2	
199	BLACK FOAM RUBBER W/A 125x8x1mm	4	FOR METAL CAB
200	NATURAL RUBBER D23xD6x2mm	2	FOR HOLDER SCREW
201	MIC PAD CORK D12.5xIN9.5x7mm	1	FOR MIC
202	RED FIBRE 114x110x0.3mm	1	FOR METAL CAB
203	6000# BLACK FELT PAPER: D65x0.3mm	1	FOR CAB
204	6000# BLACK FELT PAPER:125x8x0.3mm W/A	2	FOR PLASTIC CAB

TEAM

MODEL : TS-TwoWay 8012 27MHz 80CH-FM 12CH-AM
WITH 12V CAR PLUG

DATE: 13. Nov 00

PART LIST FOR TS-8012

NO.	DESCRIPTION	QTY	REMARKS
205	QC PASSED LABEL	1	
206	SERIAL NUMBER LABEL TS8012	1	
207	DIAL PLATE 1mm	1	
208	UL CABLE TIE SIZE:3.1"x2.5mm	3	
209	FUSE 2A 250V D6.35x30	1	
210	MUCILAGE GLUE	1	
211	CARTON	1/10	
212	POLYBAG KITCHEN TIME 50x50mm	1	FUSE
213	POLYBAG 90mm x 180mm	2	MIC , SCREW
214	POLYBAG 170mm x 260mm	1	MAIN CAB
215	SHIELDING CARD PAPER (L)81x(W)66x(T)0.5mm	1	
216	SHIELDING CARD PAPER (L)29x(W)23x(T)0.5mm	1	
217	GIFT BOX	1	
218	GIFT BOX CARD	1	
219	INSTRUCTION SHEET	1	
220	WARNINTY CARD	1	
221	CERTIFICATE SHEET	1	
222	PLASTIC PARTS	1	