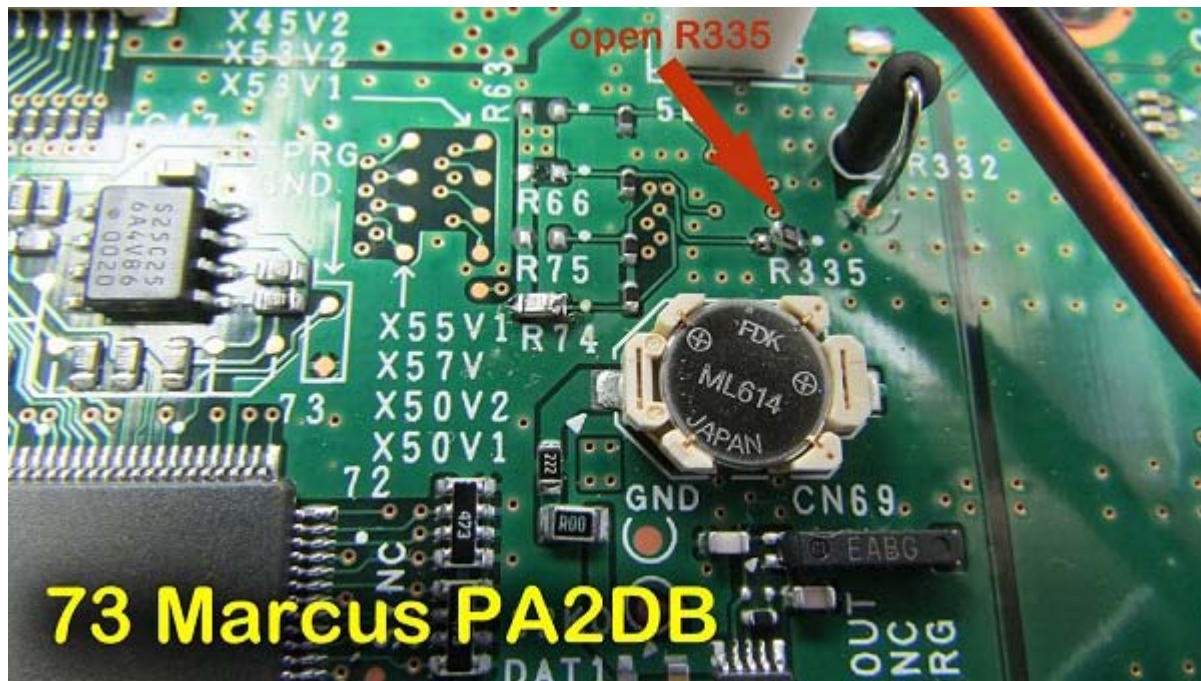


1. Open bottom.
2. Remove the big L plate (lead to the ctrl unit).
3. Open R335 (see attached picture).
4. Put L Plate back \*\*\*\* WATCH OUT FOR THE FLATCABLES \*\*\*\*
5. Put bottom back.
6. Switch 990 on.



When TRX is swithed on it reset automaticly.

TX: 100-522 Khz  
TX: 1.705-30 Mhz  
TX 49 - 54 Mhz

HAMSHOP 73 Marcus PA2DB